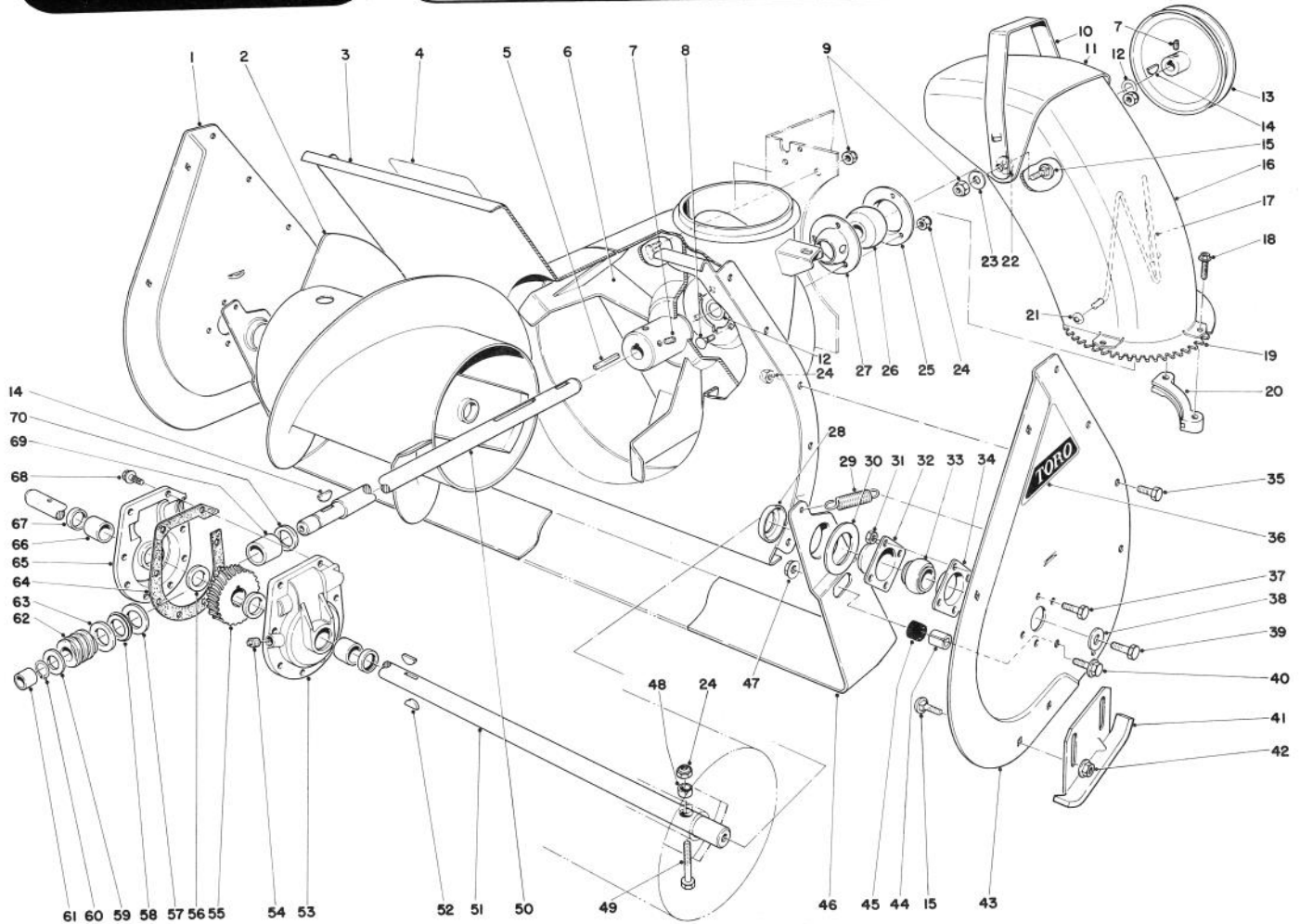




MODEL NO. 38040 – 4000001 & UP  
 MODEL NO. 38050 – 4000001 & UP

**PARTS  
 CATALOG**

**524 AND 724 SNOWTHROWERS**

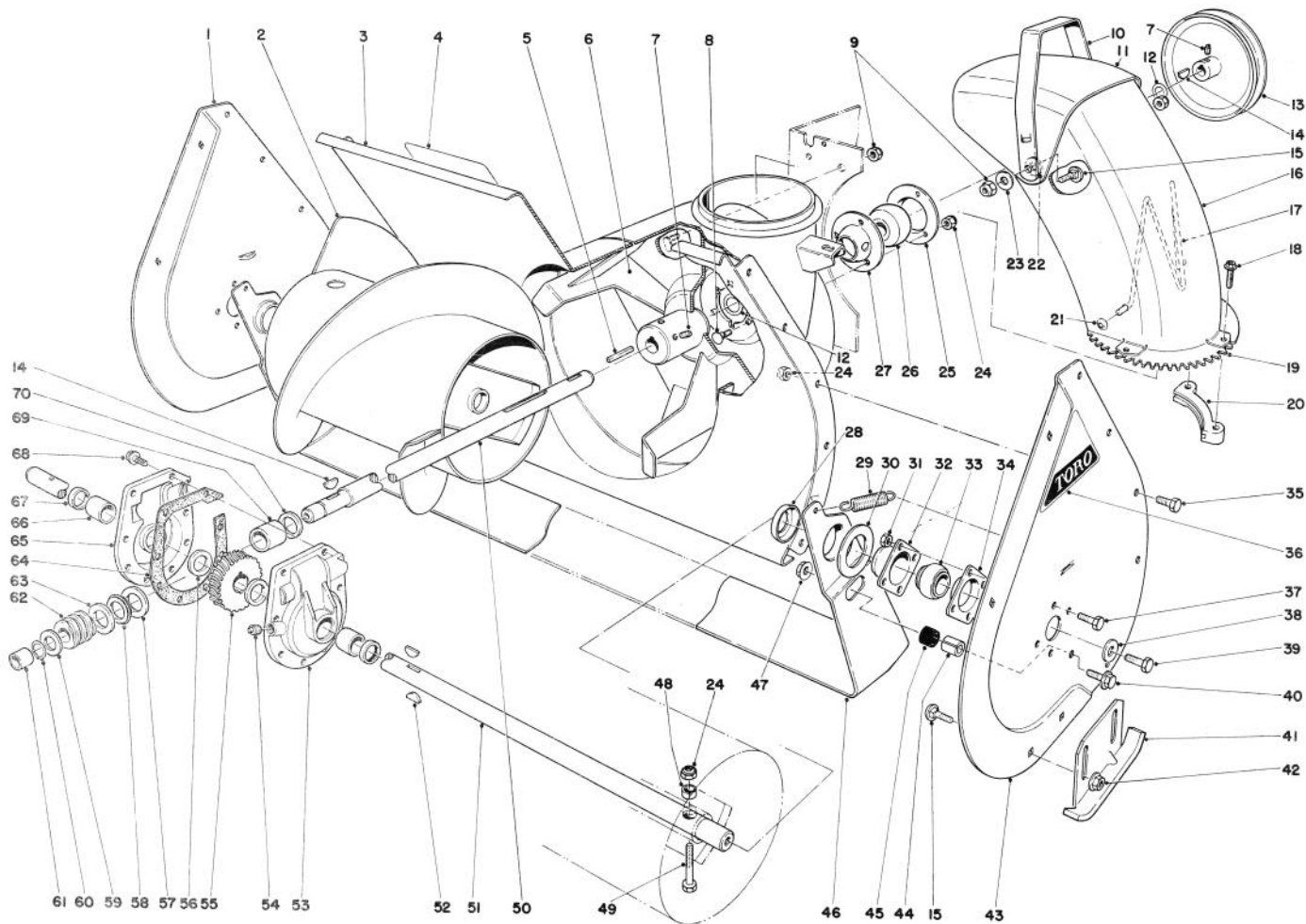


**AUGER ASSEMBLY**

| Ref. No. | Part No. | Description           | No. Used |
|----------|----------|-----------------------|----------|
| 1        | 43-7440  | Sideplate Auger Right | 1        |
| 2        | 26-6140  | Auger Right           | 1        |
| *        | 26-6150  | Auger Left            | 1        |
| 3        | 40-8120  | Auger Housing         | 1        |
| 4        | 29-6350  | Decal – Auger Warning | 1        |
| 5        | 6-8590   | Key – Impeller        | 1        |
| 6        | 20-1260  | Impeller              | 1        |
| 7        | 3242-4   | Set Screw             | 4        |
| 8        | 3230-1   | Carriage Bolt         | 3        |
| 9        | 32152-2  | Locknut               | 6        |
| 10       | 20-1410  | Handle Deflector      | 1        |
| 11       | 20-1400  | Deflector Chute       | 1        |
| 12       | 3-0737   | Thrust Washer         | 2        |

| Ref. No. | Part No. | Description         | No. Used |
|----------|----------|---------------------|----------|
| 13       | 20-1310  | Pulley Impeller     | 1        |
| 14       | 3257-23  | Woodruff Key        | 2        |
| 15       | 3231-27  | Carriage Bolt       | 6        |
| 16       | 20-1390  | Chute               | 1        |
| 17       | 12-2040  | Wire Chute          | 1        |
| 18       | 27-0210  | Special Screw       | 4        |
| 19       | 43-7470  | Swivel Gear Chute   | 1        |
| 20       | 40-8150  | Retainer Chute      | 2        |
| 21       | 3290-326 | Pushnuts            | 2        |
| 22       | 20-4320  | Washer Rubber       | 2        |
| 23       | 3290-340 | Washer Belleville   | 2        |
| 24       | 3296-29  | Locknut             | 15       |
| 25       | 26-6120  | Bearing Flange Rear | 1        |

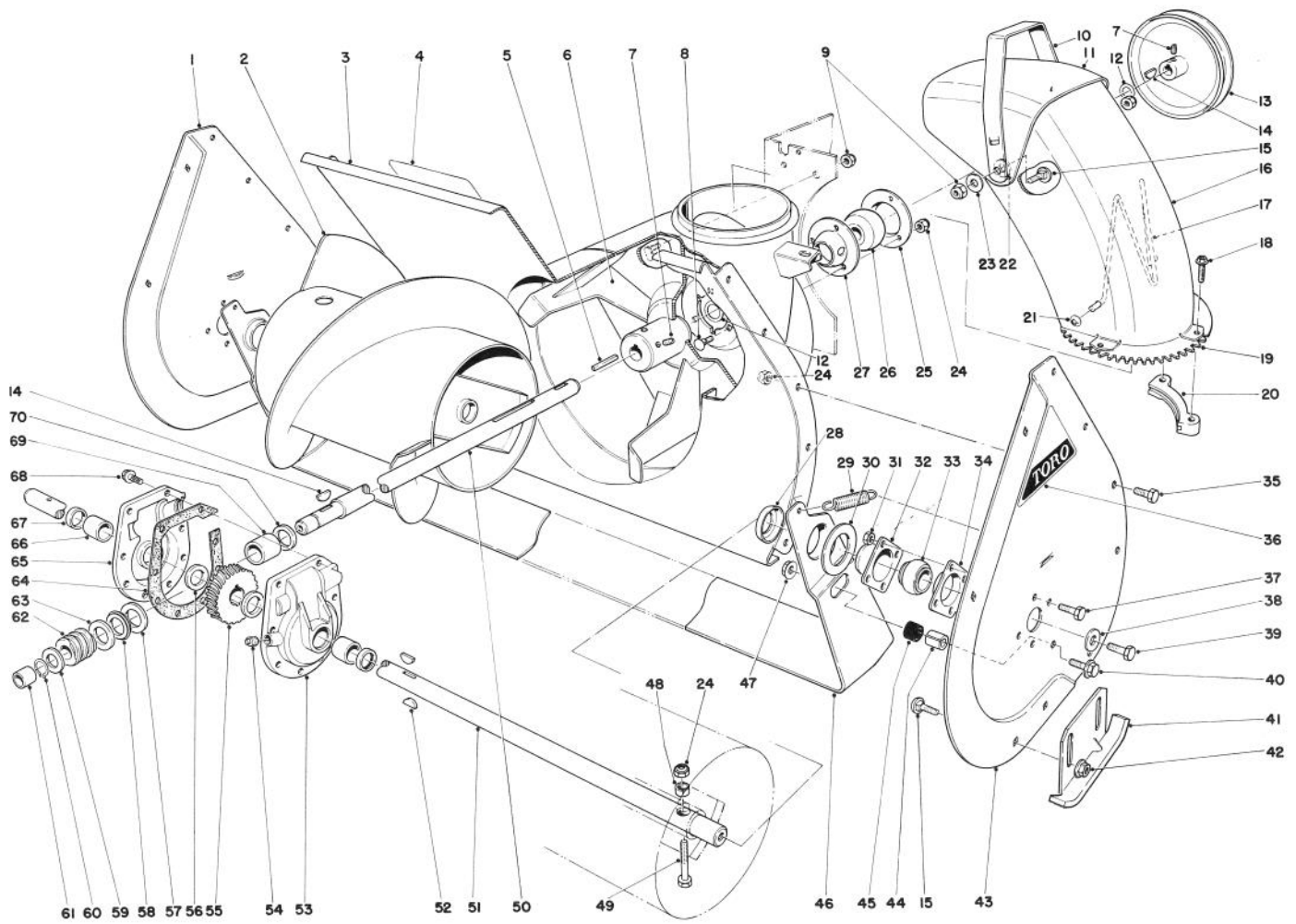
\*Not Illustrated



### AUGER ASSEMBLY (Continued)

| Ref. No. | Part No. | Description                | No. Used |
|----------|----------|----------------------------|----------|
| 26       | 26-6100  | Bearing Impeller           | 1        |
| 27       | 26-6110  | Bearing Flange Front       | 1        |
| 28       | 26-6400  | Positioner — Scraper Blade | 2        |
| 29       | 5-7290   | Spring — Scraper Blade     | 2        |
| 30       | 20-0300  | Spacer — Scraper Blade     | 2        |
| 31       | 32152-4  | Locknut                    | 8        |
| 32       | 20-0990  | Bearing Flange Auger       | 2        |
| 33       | 20-0980  | Bearing Auger              | 2        |
| 34       | 20-1000  | Bearing Flange Auger       | 2        |
| 35       | 322-2    | Capscrew                   | 10       |
| 36       | 17-6500  | Decal — Auger Side Plate   | 2        |
| 37       | 321-3    | Capscrew                   | 8        |
| 38       | 3-0750   | Flat Washer                | 2        |
| 39       | 323-6    | Capscrew                   | 2        |
| 40       | 3234-11  | Hex Flange Bolt            | 2        |
| 41       | 20-2840  | Skid                       | 2        |
| 42       | 3290-357 | Flange Nut                 | 4        |
| 43       | 43-7430  | Sideplate Auger Left       | 1        |
| 44       | 25-5140  | Standoff — Scraper Blade   | 2        |
| 45       | 25-5150  | Bumper — Scraper Blade     | 2        |
| 46       | 20-1320  | Scraper Blade              | 1        |

| Ref. No. | Part No. | Description                        | No. Used |
|----------|----------|------------------------------------|----------|
| 47       | 32128-21 | Locknut                            | 2        |
| 48       | 25-5090  | Spacer Auger Hub                   | 2        |
| 49       | 17-7030  | Bolt Auger                         | 2        |
| 50       | 36-2580  | Shaft Impeller                     | 1        |
| 51       | 20-1170  | Shaft Auger                        | 1        |
| 52       | 3257-33  | Key Woodruff                       | 2        |
| 53       | 37-8860  | Gear Case<br>(Incl. Ref. #66 & 67) | 1        |
| 54       | 281-1    | Pipe Plug                          | 1        |
| 55       | 5-7180   | Gear Worm                          | 1        |
| 56       | 252-71   | Thrust Bearing                     | 2        |
| 57       | 252-78   | Thrust Washer                      | 1        |
| 58       | 252-76   | Thrust Bearing                     | 1        |
| 59       | 3-8664   | Thrust Washer                      | 1        |
| 60       | 32120-72 | Retaining Ring                     | 1        |
| 61       | 256-32   | Bushing                            | 1        |
| 62       | 5-7170   | Worm                               | 1        |
| 63       | 252-77   | Thrust Washer                      | 1        |
| 64       | 40-8330  | Gasket                             | 1        |
| 65       | 37-8850  | Gear Case<br>(Incl. Ref. #66 & 67) | 1        |

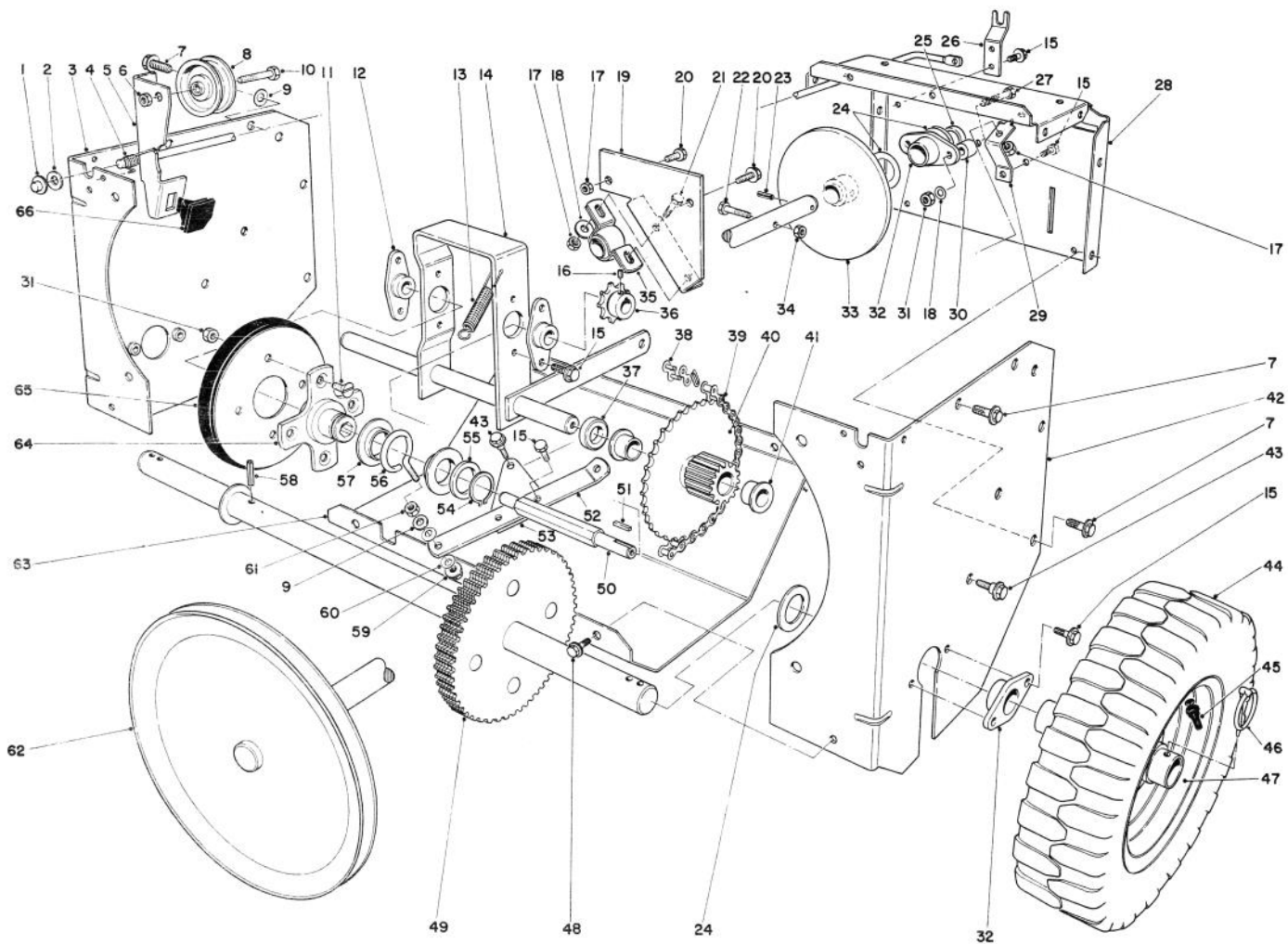


## AUGER ASSEMBLY (Continued)

| Ref. No. | Part No. | Description       | No. Used |
|----------|----------|-------------------|----------|
| 66       | 256-237  | Bushing           | 2        |
| 67       | 7-0045   | Oil Seal          | 2        |
| 68       | 32144-41 | Thread Form Screw | 8        |
| 69       | 20-3210  | Bushing           | 1        |
| 70       | 237-87   | Seal              | 1        |

| Ref. No. | Part No. | Description                         | No. Used |
|----------|----------|-------------------------------------|----------|
| *        | 19-7000  | Gear Case Assembly Complete         | 1        |
| *        | 20-0690  | Drift Breaker Kit<br>(Optional)     | 1        |
| *        | 25-9150  | Decal — Replacement Serial<br>Plate | 1        |

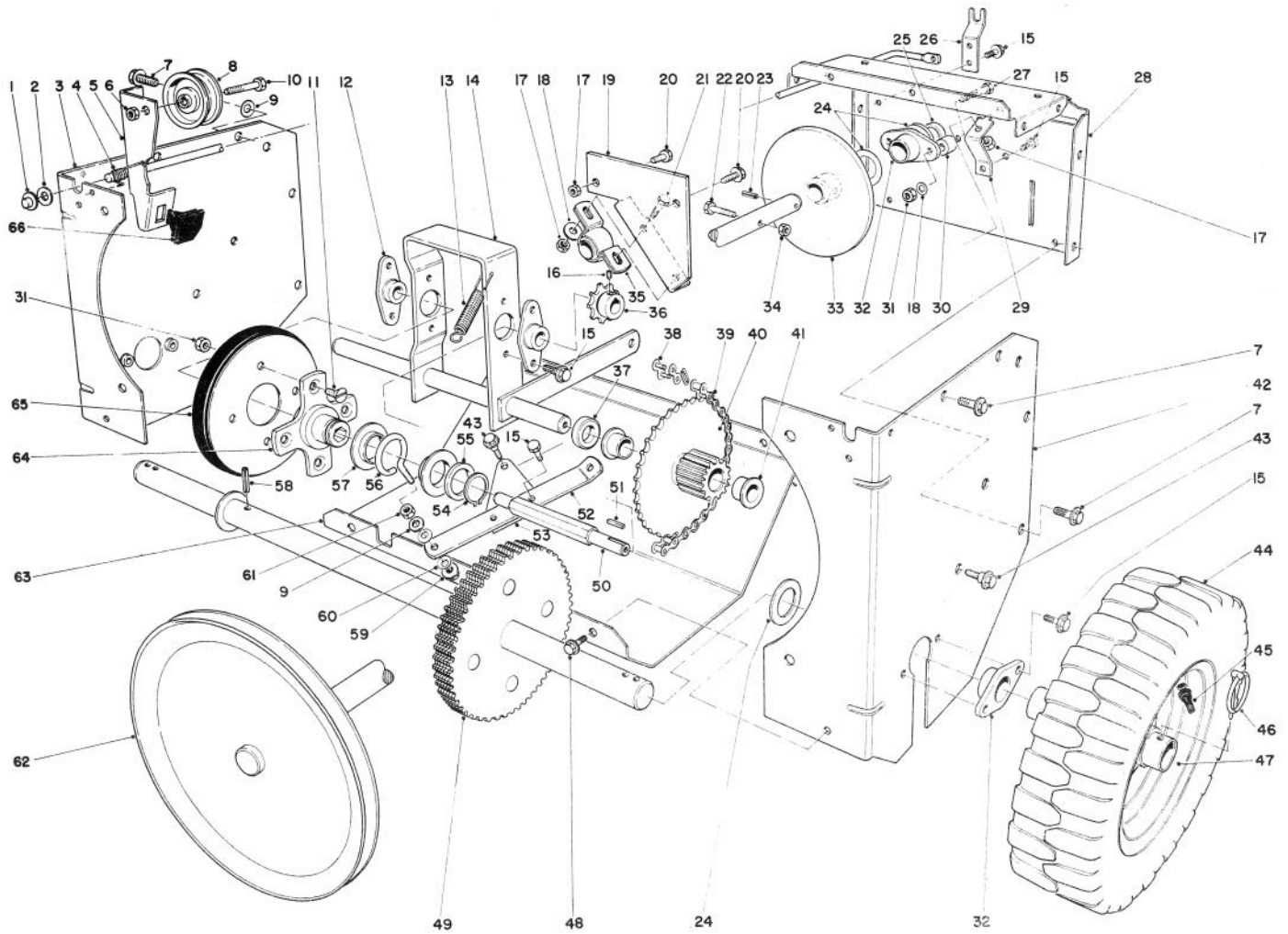
\*Not Illustrated



## TRACTION ASSEMBLY

| Ref. No. | Part No. | Description                  | No. Used |
|----------|----------|------------------------------|----------|
| 1        | 3290-383 | Pushnut                      | 1        |
| 2        | 3256-25  | Flat Washer                  | 1        |
| 3        | 20-1420  | Side Plate Traction          | 1        |
| 4        | 20-1160  | Torsion Spring Clutch        | 1        |
| 5        | 8-9019   | Clutch Rod (Incl. Ref. #66)  | 1        |
| 6        | 32146-2  | Locknut                      | 1        |
| 7        | 32144-15 | Hex Hd. Thread Forming Screw | 8        |
| 8        | 3-4244   | Idler Pulley                 | 1        |
| 9        | 3256-45  | Flat Washer                  | 2        |
| 10       | 323-29   | Capscrew                     | 1        |
| 11       | 32108-94 | Screw Flat Head              | 4        |
| 12       | 20-1620  | Bearing Friction Wheel       | 2        |
| 13       | 11-4640  | Spring - Clutch Control      | 1        |
| 14       | 20-1580  | Pivot Shaft                  | 1        |
| 15       | 32144-11 | Screw Thread Forming         | 13       |
| 16       | 3245-32  | Set Screw                    | 2        |
| 17       | 3296-29  | Locknut                      | 5        |
| 18       | 3256-23  | Washer                       | 4        |
| 19       | 36-9990  | Bracket - Shaft Support      | 1        |
| 20       | 322-2    | Capscrew                     | 2        |
| 21       | 322-3    | Capscrew                     | 2        |
| 22       | 321-33   | Capscrew                     | 1        |

| Ref. No. | Part No. | Description                     | No. Used |
|----------|----------|---------------------------------|----------|
| 23       | 32121-6  | Roll Pin                        | 1        |
| 24       | 3-0737   | Thrust Washer                   | 5        |
| 25       | 26-6370  | Spacer Drive Shaft              | 1        |
| 26       | 20-1080  | Support Clutch Rod              | 1        |
| 27       | 322-8    | Capscrew                        | 2        |
| 28       | 26-6360  | Frame Center                    | 1        |
| 29       | 20-1760  | Pivot Bracket                   | 1        |
| 30       | 26-6380  | Standoff Drive Shaft            | 2        |
| 31       | 32146-5  | Locknut                         | 6        |
| 32       | 20-1730  | Bearing Axle                    | 3        |
| 33       | 20-1550  | Friction Plate                  | 1        |
| 34       | 32152-4  | Locknut                         | 1        |
| 35       | 36-9980  | Bearing - Pillow Block          | 1        |
| 36       | 5-9820   | Sprocket                        | 1        |
| 37       | 3-7384   | Spacer                          | 1        |
| 38       | 2710-6   | Connecting Link                 | 1        |
| 39       | 20-1810  | Chain                           | 1        |
| 40       | 20-1640  | Gear & Bushing (Incl. Ref. #41) | 1        |
| 41       | 3-1506   | Bushing - Flanged               | 2        |
| 42       | 20-1430  | Side Plate Traction             | 1        |
| 43       | 11-8140  | Shoulder Screw                  | 3        |
| 44       | 231-80   | Tire                            | 2        |
| 45       | 232-27   | Valve Stem                      | 2        |



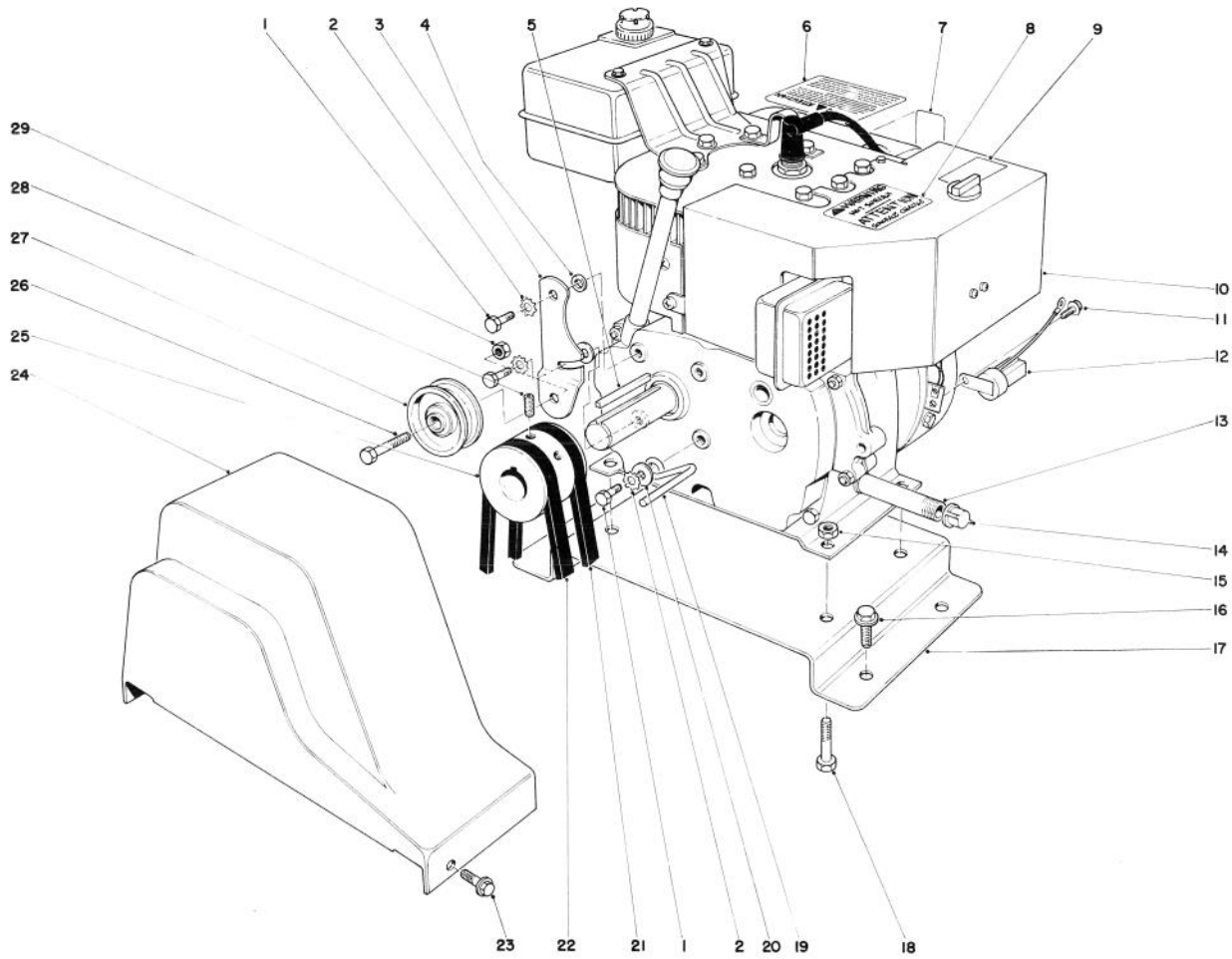
## TRACTION ASSEMBLY (Continued)

| Ref. No. | Part No. | Description          | No. Used |
|----------|----------|----------------------|----------|
| 46       | 3290-243 | Klik Pin             | 2        |
| 47       | 20-1750  | Wheel                | 2        |
| 48       | 32144-10 | Screw Thread Forming | 4        |
| 49       | 20-1680  | Axle & Gear          | 1        |
| 50       | 20-1630  | Shaft Friction Wheel | 1        |
| 51       | 3-6168   | Square Key           | 1        |
| 52       | 20-1780  | Linkage Shift        | 1        |
| 53       | 20-1770  | Pivot Plate          | 1        |
| 54       | 32151-36 | Snap Ring            | 1        |
| 55       | 252-71   | Thrust Bearing       | 1        |
| 56       | 11-8050  | Slider Ring Collar   | 1        |
| 57       | 11-8080  | Ring - Slider        | 2        |
| 58       | 32121-9  | Roll Pin             | 1        |
| 59       | 32128-12 | Flange Nut           | 1        |

| Ref. No. | Part No. | Description               | No. Used |
|----------|----------|---------------------------|----------|
| 60       | 3290-212 | Spring Washer             | 2        |
| 61       | 32146-6  | Nut                       | 1        |
| 62       | 22-7930  | Drive Shaft               | 1        |
| 63       | 20-1840  | Lower Shield              | 1        |
| 64       | 20-3310  | Hub - Traction Disc       | 1        |
| 65       | 40-8170  | Friction Wheel            | 1        |
| 66       | 40-8140  | Brake Pad - Molded        | 1        |
| *†       | 20-9800  | Tire Chain Kit (Optional) | 1        |
| *†       | 232-36   | Tube (Optional)           | 2        |
| *        | 8-8359   | Loose Parts               |          |
|          |          | (Model 38040)             | 1        |
| *        | 11-5679  | Loose Parts               |          |
|          |          | (Model 38050)             | 1        |

†Optional Equipment  
\*Not Illustrated



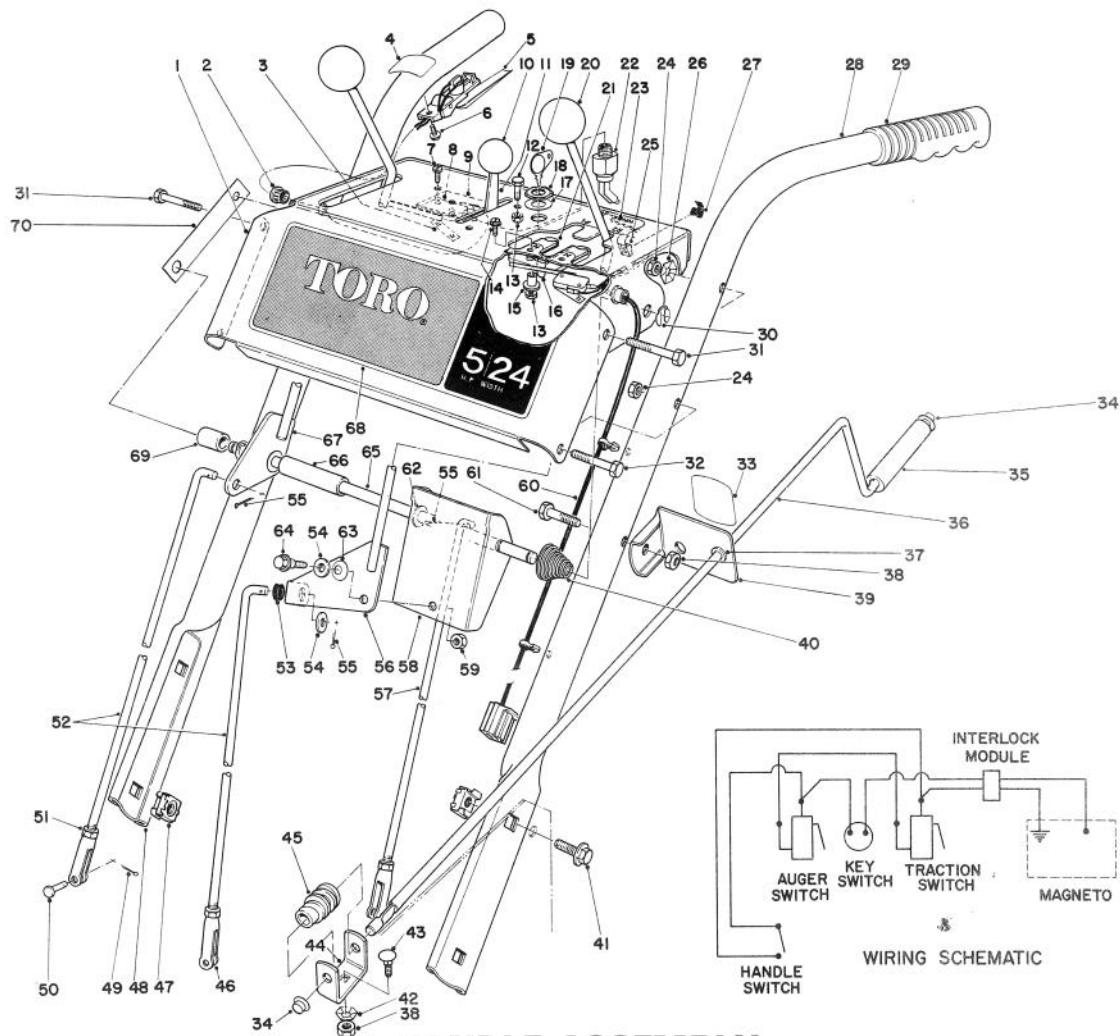


## ENGINE ASSEMBLY

| Ref. No. | Part No. | Description                 | No. Used |
|----------|----------|-----------------------------|----------|
| 1        | 3210-3   | Capscrew                    | 3        |
| 2        | 3255-8   | Lockwasher                  | 3        |
| 3        | 20-1800  | Idler Arm                   | 1        |
| 4        | 40-8490  | Spacer                      | 1        |
| 5        | 5-0930   | Key                         | 1        |
| 6        | 41-8540  | Decal – Hazards Caution     | 1        |
| 7        | 39-3860  | Decal – Primer              | 1        |
| 8        | 29-6390  | Decal – Hot Surface Warning | 1        |
| 9        | 39-3840  | Decal – Choke               | 1        |
| 10       | 221-674  | Engine (Model 38040)        | 1        |
| *        | 221-666  | Engine (Model 38050)        | 1        |
| *        | 221-704  | Engine (Model 38050)        | 1        |
| 11       | 12-3270  | Screw – Thread Forming      | 1        |
| 12       | 41-8600  | Interlock Module            | 1        |
| 13       | 289-34   | Pipe Nipple                 | 1        |
| 14       | 288-2    | Pipe Cap                    | 1        |

| Ref. No. | Part No. | Description             | No. Used |
|----------|----------|-------------------------|----------|
| 15       | 3296-29  | Locknut                 | 4        |
| 16       | 32144-15 | Hex Form Screw          | 4        |
| 17       | 25-5990  | Plate – Engine Mounting | 1        |
| 18       | 322-2    | Capscrew                | 4        |
| 19       | 17-5530  | Belt Retainer           | 1        |
| 20       | 3256-23  | Washer                  | 2        |
| 21       | 20-1820  | V-Belt Traction         | 1        |
| 22       | 26-9670  | V-Belt Auger            | 1        |
| 23       | 32144-10 | Screw Thread Forming    | 2        |
| 24       | 20-1830  | Belt Guard              | 1        |
| 25       | 21-4100  | Pulley                  | 1        |
| 26       | 323-29   | Capscrew                | 1        |
| 27       | 3-4244   | Idler Pulley            | 1        |
| 28       | 3246-14  | Set Screw               | 2        |
| 29       | 32146-2  | Locknut                 | 1        |

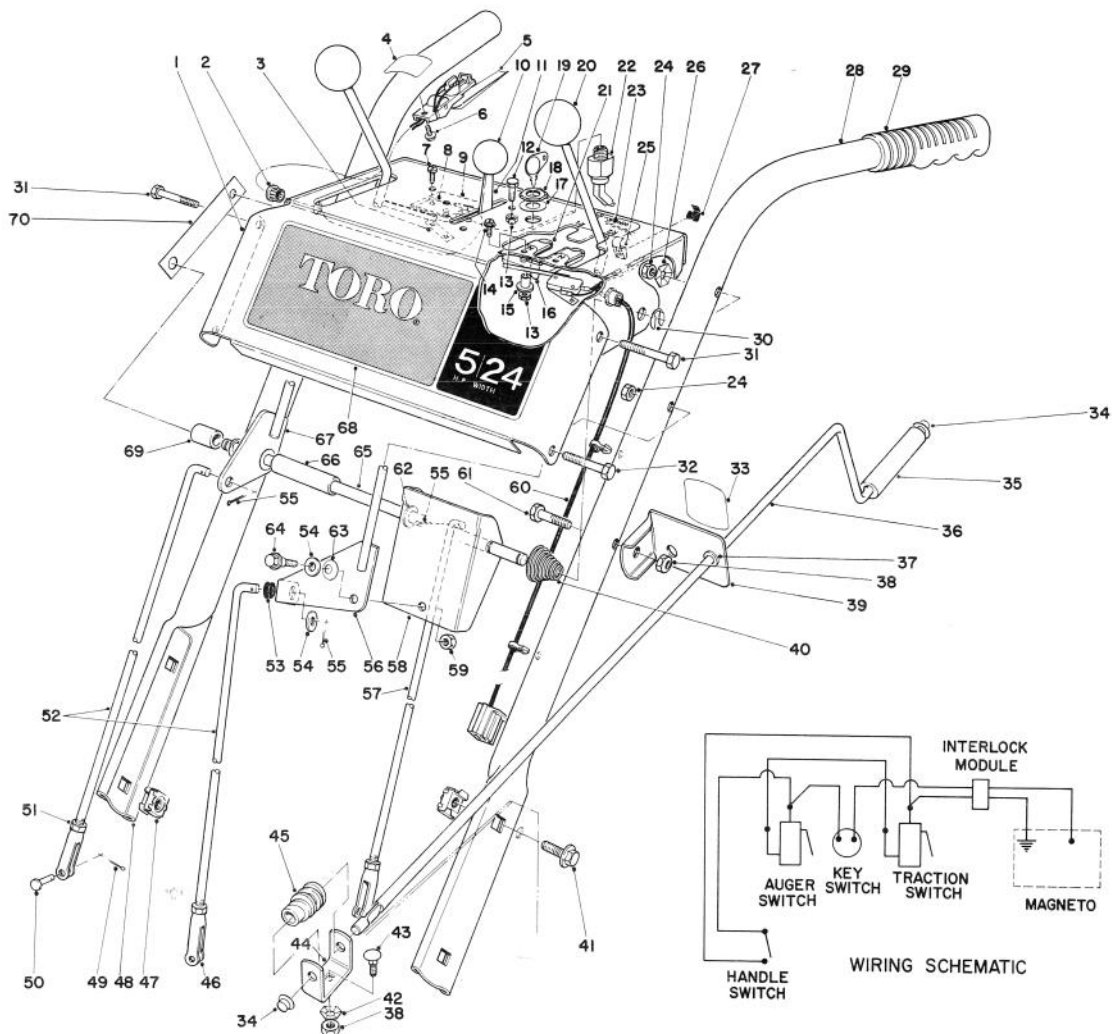
\*Not Illustrated



## HANDLE ASSEMBLY

| Ref. No. | Part No. | Description               | No. Used |
|----------|----------|---------------------------|----------|
| 1        | 40-8470  | Escutcheon Plate          | 1        |
| 2        | 237-130  | Snap Bushing              | 1        |
| 3        | 3290-354 | Clip                      | 2        |
| 4        | 29-6360  | Decal – Safety Interlock  | 1        |
| 5        | 40-9690  | Interlock Handle & Switch | 1        |
| 6        | 12-3270  | Screw – Self Tapping      | 1        |
| 7        | 3290-313 | Pan Head Machine Screw    | 4        |
| 8        | 40-8200  | Micro Switch              | 2        |
| 9        | 22-7950  | Switch Mounting Pad       | 1        |
| 10       | 233-36   | Knob                      | 1        |
| 11       | 40-8480  | Throttle Control          | 1        |
| 12       | 32140-99 | Hex Head Screw            | 2        |
| 13       | 32146-18 | Locknut                   | 4        |
| 14       | 3251-4   | Machine Screw             | 2        |
| 15       | 22-9740  | Spacer Interlock          | 2        |
| 16       | 22-9730  | Spring Interlock          | 1        |
| 17       | 3254-5   | Lockwasher                | 1        |
| 18       | 218-461  | Hex Nut                   | 1        |
| 19       | 33-2010  | Key                       | 2        |
| 20       | 233-21   | Knob                      | 2        |
| 21       | 22-9750  | Slide Interlock           | 1        |
| 22       | 40-8240  | On-Off Switch             | 1        |
| 23       | 29-6340  | Decal – Instruction       | 1        |

| Ref. No. | Part No. | Description   | No. Used |
|----------|----------|---|----------|
| 24       | 32152-4  | Locknut   | 4        |
| 25       | 43-7450  | Wire Clamp  | 5        |
| 26       | 3290-257 | Washer – Pyramidal                                  | 2        |
| 27       | 43-7460  | Stud – Mounting                                     | 5        |
| 28       | 25-6040  | Handle – Left                                       | 1        |
| 29       | 6-0450   | Handle Grip   | 2        |
| 30       | 32151-43 | Klip Ring   | 2        |
| 31       | 321-11   | Capscrew  | 3        |
| 32       | 321-9    | Capscrew  | 1        |
| 33       | 29-6370  | Decal – Chute Direction                             | 1        |
| 34       | 3290-320 | Push-On Speed Nut                                   | 2        |
| 35       | 40-8230  | Chute Control Grip                                  | 1        |
| 36       | 40-8380  | Rod – Chute Control                                 | 1        |
| 37       | 256-249  | Nyliner   | 1        |
| 38       | 3296-29  | Locknut   | 2        |
| 39       | 6-3069   | Chute Control Rod Mounting<br>(Incl. Ref. #33 & 37) | 1        |
| 40       | 17-5630  | Spring – Conical                                    | 1        |
| 41       | 3234-1   | Hex Flange Screw                                    | 4        |
| 42       | 3290-238 | Washer Pyramidal                                    | 1        |
| 43       | 3230-2   | Carriage Bolt                                       | 1        |
| 44       | 40-8280  | Worm Bracket  | 1        |
| 45       | 40-8250  | Worm – Chute  | 1        |



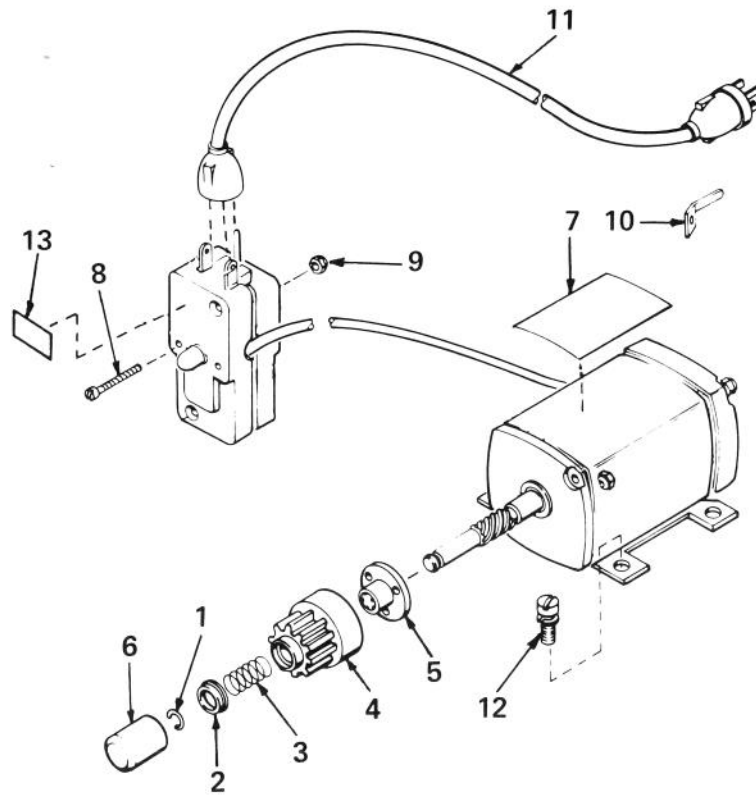
## HANDLE ASSEMBLY (Continued)

| Ref. No. | Part No. | Description                | No. Used |
|----------|----------|----------------------------|----------|
| 46       | 40-8180  | Clevis                     | 3        |
| 47       | 3290-398 | Retainer Nut               | 4        |
| 48       | 40-8430  | Handle – Right             | 1        |
| 49       | 3272-5   | Cotter Pin                 | 3        |
| 50       | 283-1    | Clevis Pin                 | 3        |
| 51       | 3220-3   | Jam Nut                    | 3        |
| 52       | 20-1980  | Control Rod – Speed Select | 2        |
| 53       | 237-89   | Rubber – Grommet           | 1        |
| 54       | 3256-24  | Washer                     | 2        |
| 55       | 3272-6   | Cotter Pin                 | 3        |
| 56       | 20-2020  | Shift Lever                | 1        |
| 57       | 20-1970  | Control Rod – Traction     | 1        |
| 58       | 20-2010  | Bracket – Shift            | 1        |
| 59       | 32152-1  | Locknut                    | 1        |

| Ref. No. | Part No. | Description                         | No. Used |
|----------|----------|-------------------------------------|----------|
| 60       | 40-8630  | Wire Harness – Interlock            | 1        |
| 61       | 322-9    | Capscrew                            | 1        |
| 62       | 3256-25  | Washer                              | 2        |
| 63       | 3290-213 | Spring Washer                       | 1        |
| 64       | 11-8140  | Shoulder Screw                      | 1        |
| 65       | 20-1910  | Pivot Rod                           | 1        |
| 66       | 28-5660  | Spacer – Shift Lever                | 1        |
| 67       | 20-1920  | Lever                               | 1        |
| 68       | 22-9720  | Decal – Escutcheon<br>(Model 38040) | 1        |
| *        | 22-9760  | Decal – Escutcheon<br>(Model 38050) | 1        |
| 69       | 28-5670  | Spacer – Auger Lever                | 1        |
| 70       | 25-9760  | Strap – Escutcheon Support          | 1        |

\* Not Illustrated



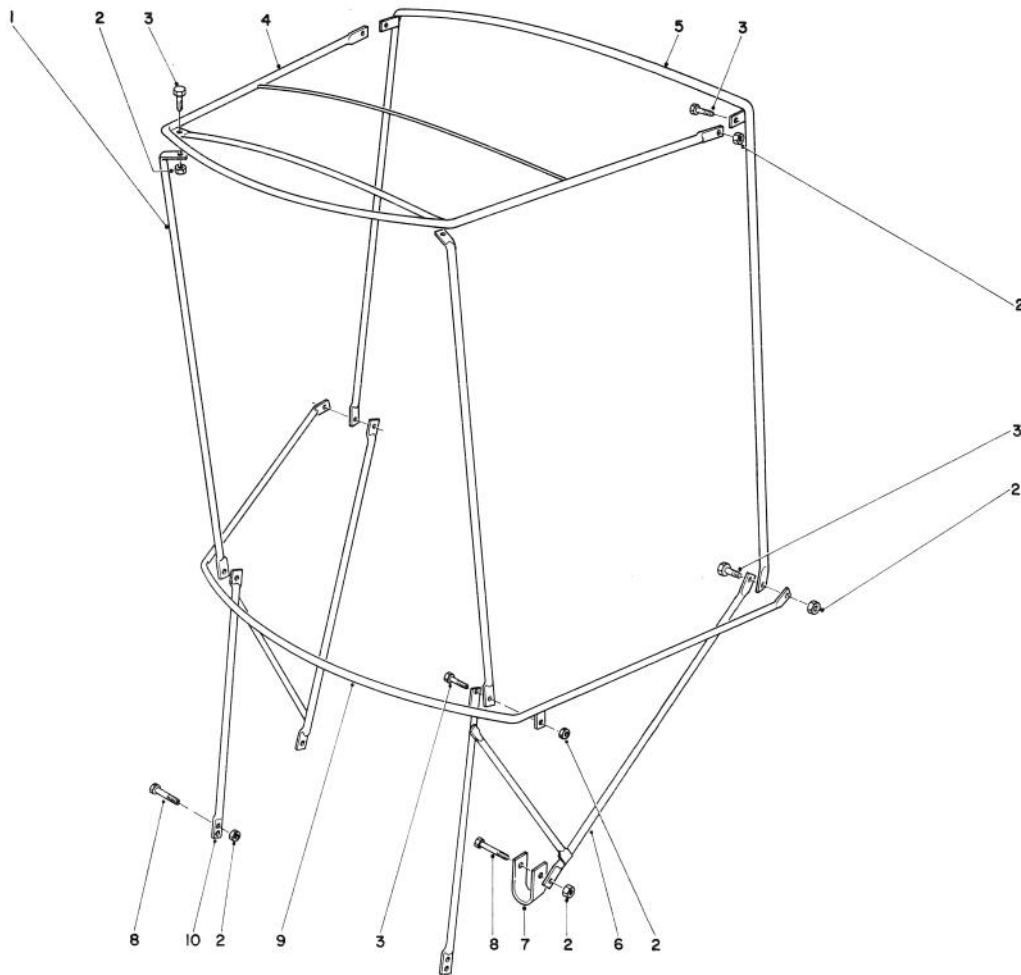


## STARTER MOTOR KIT-MODEL 38-7590 (Optional)

| Ref. No. | Part No. | Description        | No. Used |
|----------|----------|--------------------|----------|
| 1†       | 33842    | Ring, Retainer     | 1        |
| 2†       | 33430    | Retainer, Spring   | 1        |
| 3†       | 33431    | Spring, Anti-drift | 1        |
| 4†       | 33432    | Gear               | 1        |
| 5†       | 33433    | Nut, Engaging      | 1        |
| 6†       | 33451    | Cover, Dust        | 1        |
| 7†       | 34179    | Decal              | 1        |

| Ref. No. | Part No. | Description             | No. Used |
|----------|----------|-------------------------|----------|
| 8†       | 650741   | Screw, Pan Hd.          | 1        |
| 9†       | 650742   | Nut & Lockwasher        | 1        |
| 10†      | 32704    | Clip                    | 1        |
| 11†      | 32450A   | Cord, Extension (10'6") | 1        |
| 12†      | 30063    | Screw, Fil. Hd. Sems    | 1        |
| 13†      | 34161    | Decal - Instruction     | 1        |

†Note: Obtain individual replacement parts from your local Tecumseh Dealer.

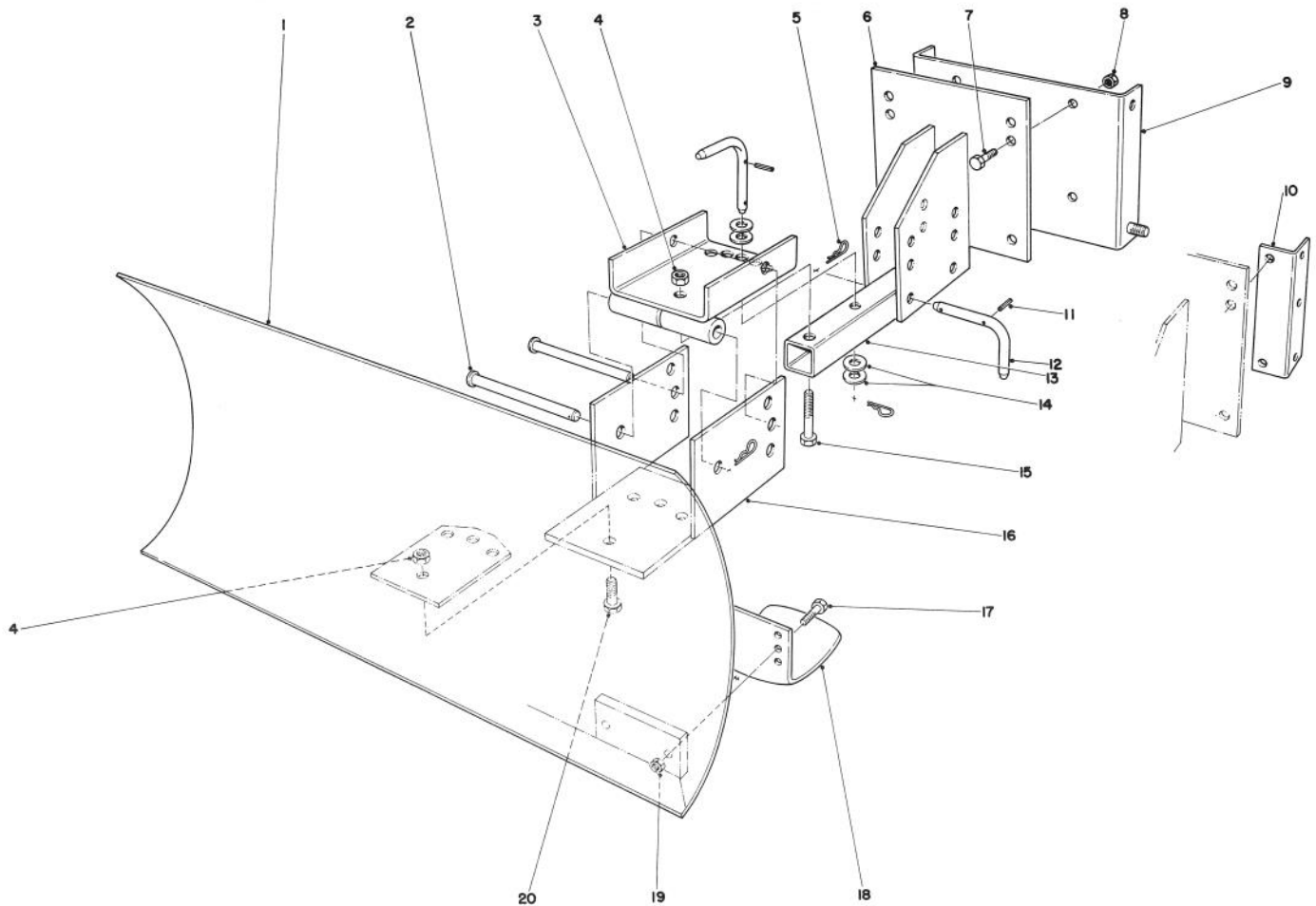


## SNOW CAB ASSEMBLY MODEL 42-3380 (Optional)

| Ref. No. | Part No. | Description            | No. Used |
|----------|----------|------------------------|----------|
| 1        | 12-8040  | Front Corner Post      | 2        |
| 2        | 32146-17 | Locknut                | 12       |
| 3        | 321-4    | Capscrew               | 8        |
| 4        | 12-8010  | Top Frame              | 1        |
| 5        | 12-8030  | Rear Vertical Bow      | 1        |
| 6        | 42-4060  | Attaching Bracket L.H. | 1        |

| Ref. No. | Part No. | Description            | No. Used |
|----------|----------|------------------------|----------|
| 7        | 12-8050  | "U" Clamp              | 2        |
| 8        | 321-11   | Capscrew               | 4        |
| 9        | 12-8020  | Horizontal Curved Bow  | 1        |
| 10       | 42-4050  | Attaching Bracket R.H. | 1        |
| *        | 42-4070  | Vinyl Cover            | 1        |

\*Not Illustrated



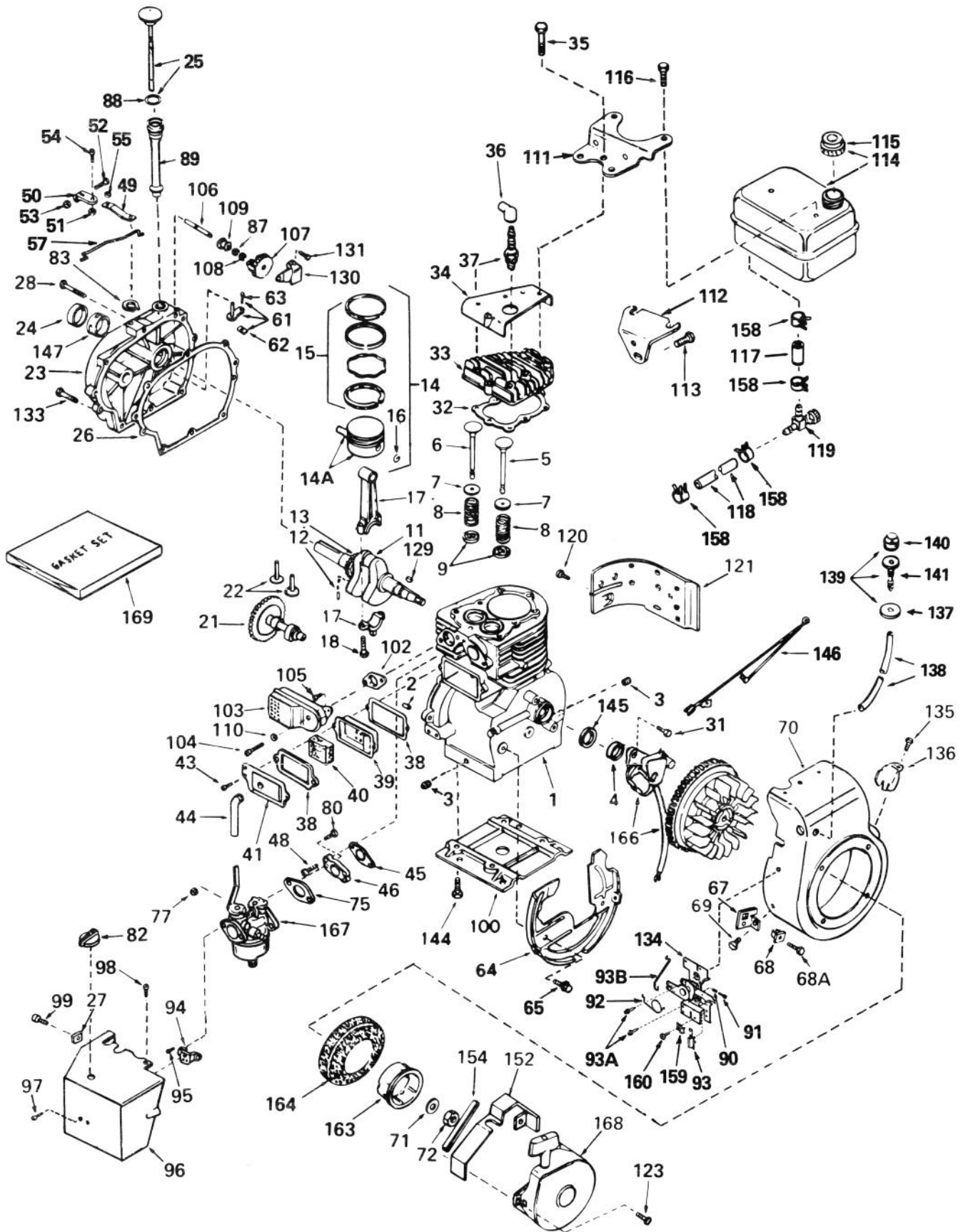
## GRADER BLADE ASSEMBLY MODEL 59099 (Optional)

| Ref. No. | Part No. | Description  | No. Used |
|----------|----------|--|----------|
| 1        | 7-4374   | Blade  | 1        |
| 2        | 283-38   | Clevis Pin   | 2        |
| 3        | 20-5090  | Swivel Bracket                                       | 1        |
| 4        | 32152-3  | Locknut  | 5        |
| 5        | 3290-322 | Hairpin Cotter                                       | 5        |
| 6        | 20-5170  | Mounting Plate                                       | 1        |
| 7        | 323-6    | Capscrew   | 4        |
| 8        | 32152-2  | Locknut  | 4        |
| 9        | 22-4920  | Mounting Plate (Used with 826 & 1132 Units only)     | 1        |
| 10       | 39-7850  | Mounting Rail (Used with 3521, 421 & 521 Units only) | 2        |

| Ref. No. | Part No. | Description                  | No. Used |
|----------|----------|------------------------------|----------|
| 11       | 32121-45 | Roll Pin                     | 3        |
| 12       | 20-5210  | Pivot Pin (Incl. Ref. #11)   | 3        |
| 13       | 20-5140  | Tongue Blade                 | 1        |
| 14       | 3256-5   | Flat Washer                  | 4        |
| 15       | 325-11   | Capscrew                     | 1        |
| 16       | 20-5130  | Blade Adjustment Plate       | 1        |
| 17       | 322-6    | Capscrew                     | 4        |
| 18       | 7-1023   | Skid                         | 2        |
| 19       | 32152-1  | Locknut                      | 4        |
| 20       | 325-5    | Capscrew                     | 4        |
| *        | 20-9950  | Air Cleaner Kit — (Tecumseh) | 1        |

\*Not Illustrated

# ENGINE, TECUMSEH MODEL NO. H50-65440M (5 H.P. SNOWTHROWER MODEL NO. 38040)



# ENGINE, TECUMSEH MODEL NO. H50-65440M

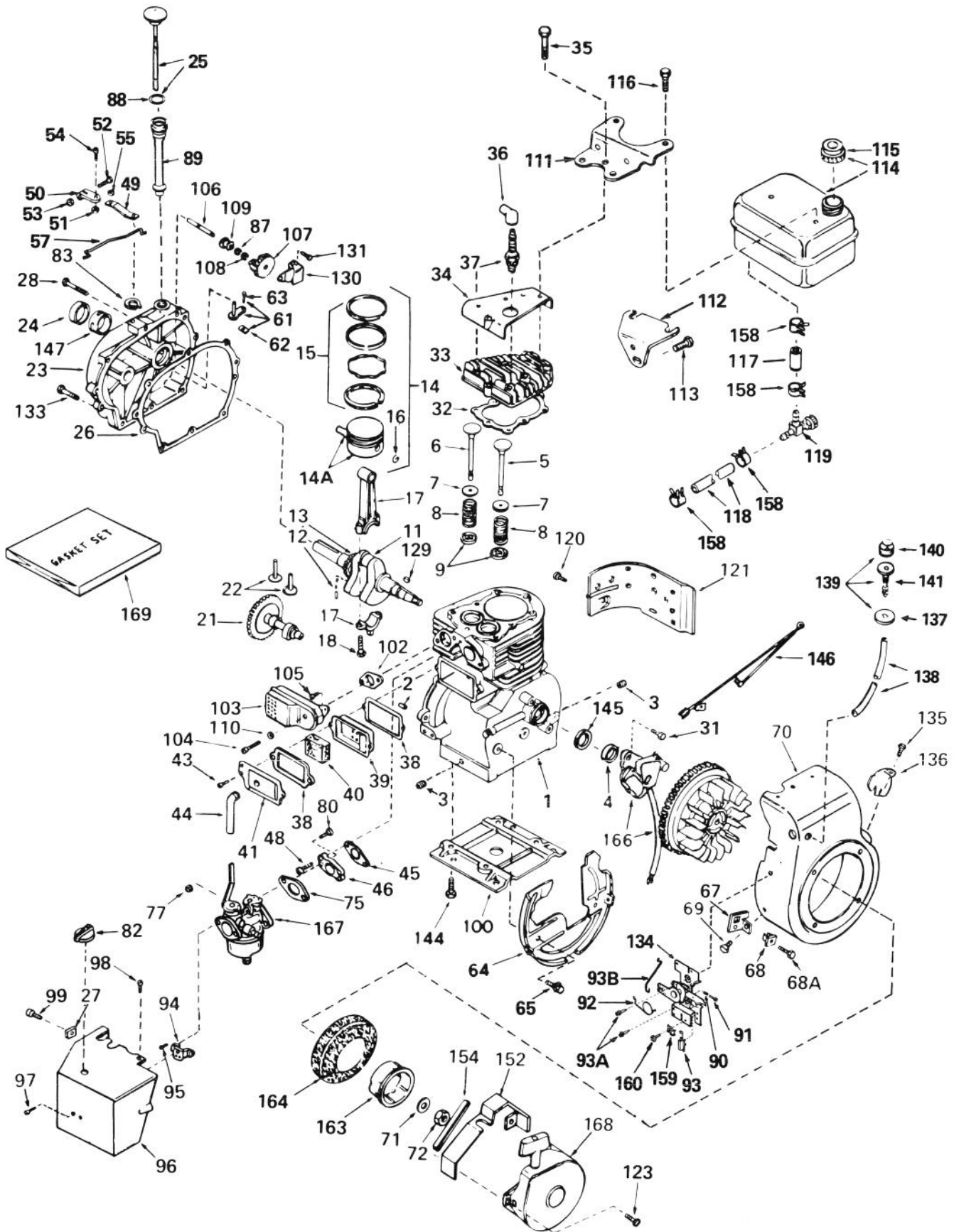
## (5 H.P. SNOWTHROWER MODEL NO. 38040)

| Ref. No. | Part No. | Description   | No. Used | Ref. No. | Part No. | Description  | No. Used |
|----------|----------|---|----------|----------|----------|--|----------|
| 1        | 33311B   | Cylinder Assy. (Incl. Ref. # 2, 3, 4 & 5)                           | 1        | 35       | 650697A  | Screw, Hex Flange Hd.  | 8        |
| 2        | 27652    | Pin, Dowel  | 2        | 36       | 610118   | Cover, Spark Plug  | 1        |
| 3        | 27642    | Plug, (Oil Drain)   | 2        | 37       | 33636    | Plug, Spark (Champion J-8 or equivalent)                                       | 1        |
| 4        | 27876B   | Seal, Oil   | 1        |          |          | Except for Canada  | 1        |
| 5        | 32783    | Valve, Intake (Std.) (Incl. Ref. #9)                                | 1        | 37       | 34251    | Resistor Spark Plug (Canadian Regulations Require RJ-17LM Resistor Spark Plug) | 1        |
| 5        | 32784    | Valve, Intake (1/32" oversize) (Incl. Ref. #9)                      | 1        | 38       | *27896   | Gasket, Valve Spring Cover   | 2        |
| 6        | 27878A   | Valve, Exhaust (Std.) (Incl. Ref. #9)                               | 1        | 39       | 28423    | Body Assy., Breather   | 1        |
| 6        | 27880A   | Valve, Exhaust (1/32" oversize) (Incl. Ref. #9)                     | 1        | 40       | 28424    | Element, Breather  | 1        |
| 7        | 27882    | Cap, Upper Valve Spring   | 2        | 41       | 28425    | Cover, Valve Spring  | 1        |
| 8        | 27881    | Spring, Valve   | 2        | 43       | 650128   | Screw, Fil. Hd.  | 2        |
| 9        | 32581    | Cap, Lower Valve Spring   | 2        | 44       | 27627    | Tube, Breather   | 1        |
| 11       | 30813    | Crankshaft Assy. (Incl. Ref. #12 & 13)                              | 1        | 45       | *27915   | Gasket, Intake   | 1        |
| 12       | 29783    | Pin, Crankshaft Gear  | 1        | 46       | 30195A   | Flange, Carburetor (Incl. Ref. #77 & 80)                                       | 1        |
| 13       | 27884    | Gear, Crankshaft  | 1        | 48       | 30196    | Screw, Fil. Hd.  | 2        |
| 14       | 34531    | Piston, Pin & Ring Assy. (Incl. Ref. #14A, 15 & 16) (Std.)          | 1        | 49       | 33454    | Lever, Governor  | 1        |
| 14       | 34532    | Piston, Pin & Ring Assy. (Incl. Ref. #14A, 15 & 16) (.010 oversize) | 1        | 50       | 29916    | Clamp, Governor Lever  | 1        |
| 14       | 34533    | Piston, Pin & Ring Assy. (Incl. Ref. #14A, 15 & 16) (.020 oversize) | 1        | 51       | 30322    | Nut & Lockwasher Assy.   | 1        |
| 14A      | 33312B   | Piston & Pin Assy. (Incl. Ref. #16) (Std.)                          | 1        | 52       | 29826    | Screw, Hex Washer Hd.  | 1        |
| 14A      | 33313B   | Piston & Pin Assy. (Incl. Ref. #16) (.010 oversize)                 | 1        | 53       | 29216    | Locknut  | 1        |
| 14A      | 33314B   | Piston & Pin Assy. (Incl. Ref. #16) (.020 oversize)                 | 1        | 54       | 650548   | Screw, Hex Washer Hd.  | 1        |
| 15       | 33315    | Ring Set, Piston (Std.)   | 1        | 55       | 29918    | Lockwasher   | 1        |
| 15       | 33316    | Ring Set, Piston (.010 oversize)                                    | 1        | 57       | 34661    | Link, Governor   | 1        |
| 15       | 33317    | Ring Set, Piston (.020 oversize)                                    | 1        | 61       | 30699C   | Rod Assy., Governor (Incl. Ref. #62 & 63)                                      | 1        |
| 16       | 27888    | Ring, Piston Pin Retaining  | 2        | 62       | 30700    | Yoke, Governor   | 1        |
| 17       | 31295C   | Rod Assy., Connecting (Incl. Ref. #18)                              | 1        | 63       | 650494   | Screw, Fil. Hd.  | 1        |
| 18       | 650662B  | Bolt, Connecting Rod  | 2        | 64       | 29536    | Baffle, Blower Housing   | 1        |
| 21       | 33156    | Camshaft (Compression Release)                                      | 1        | 65       | 650561   | Screw, Hex Washer Hd.  | 2        |
| 22       | 34034    | Lifter, Valve   | 2        | 67       | 34126    | Bracket, Grommet Mounting  | 1        |
| 23       | 31303B   | Cover, Cylinder (Incl. Ref. #24, 106 & 147)                         | 1        | 68       | 28545    | Grommet, Plastic   | 1        |
| 24       | 28427    | Seal, Oil   | 1        | 68A      | 650643   | Screw, Pan Hd. Self-tap  | 1        |
| 25       | 34011A   | Dipstick, Oil (Incl. Ref. #88)                                      | 1        | 69       | 29747A   | Screw, Hex Hd.   | 2        |
| 26       | *30684   | Gasket, Cylinder Cover  | 1        | 70       | 32158D   | Housing, Blower (Incl. Ref. #135 & 136)  | 1        |
| 27       | 650764   | Nut, "U" Type   | 1        | 71       | 650490   | Washer, Belleville   | 1        |
| 28       | 650488   | Screw, Hex Hd.  | 7        | 72       | 8116     | Nut, Flywheel  | 1        |
| 31       | 650489   | Screw, Hex Hd.  | 2        | 75       | *31688   | Gasket, Carburetor   | 1        |
| 32       | *28938B  | Gasket, Cylinder Head   | 1        | 77       | 29752    | Nut & Lockwasher Assy.   | 2        |
| 33       | 30938A   | Head, Cylinder (Includes 3 of Ref. #35)                             | 1        | 80       | 650572   | Screw, Flat Hd.  | 2        |
| 34       | 30939A   | Cover, Cylinder Head  | 1        | 82       | 34585    | Knob, Control  | 1        |
|          |          |   |          | 83       | 29642    | Ring, Retaining  | 1        |
|          |          |   |          | 87       | 30590A   | Washer, Flat   | 1        |
|          |          |   |          | 88       | 33590    | "O" Ring   | 1        |
|          |          |   |          | 89       | 33893A   | Tube, Oil Fill   | 1        |
|          |          |   |          | 90       | 31342    | Spring Compression   | 1        |
|          |          |   |          | 91       | 650549   | Screw, Fil. Hd.  | 1        |
|          |          |   |          | 92       | 34663    | Spring, Speed Control  | 1        |
|          |          |   |          | 93       | 610973   | Terminal Assy.   | 1        |
|          |          |   |          | 93A      | 650821   | Screw, Hex Washer Hd. Thread Cutting   | 2        |
|          |          |   |          | 93B      | 34662    | Link, Throttle   | 1        |



# ENGINE, TECUMSEH MODEL NO. H50-65440M (Continued)

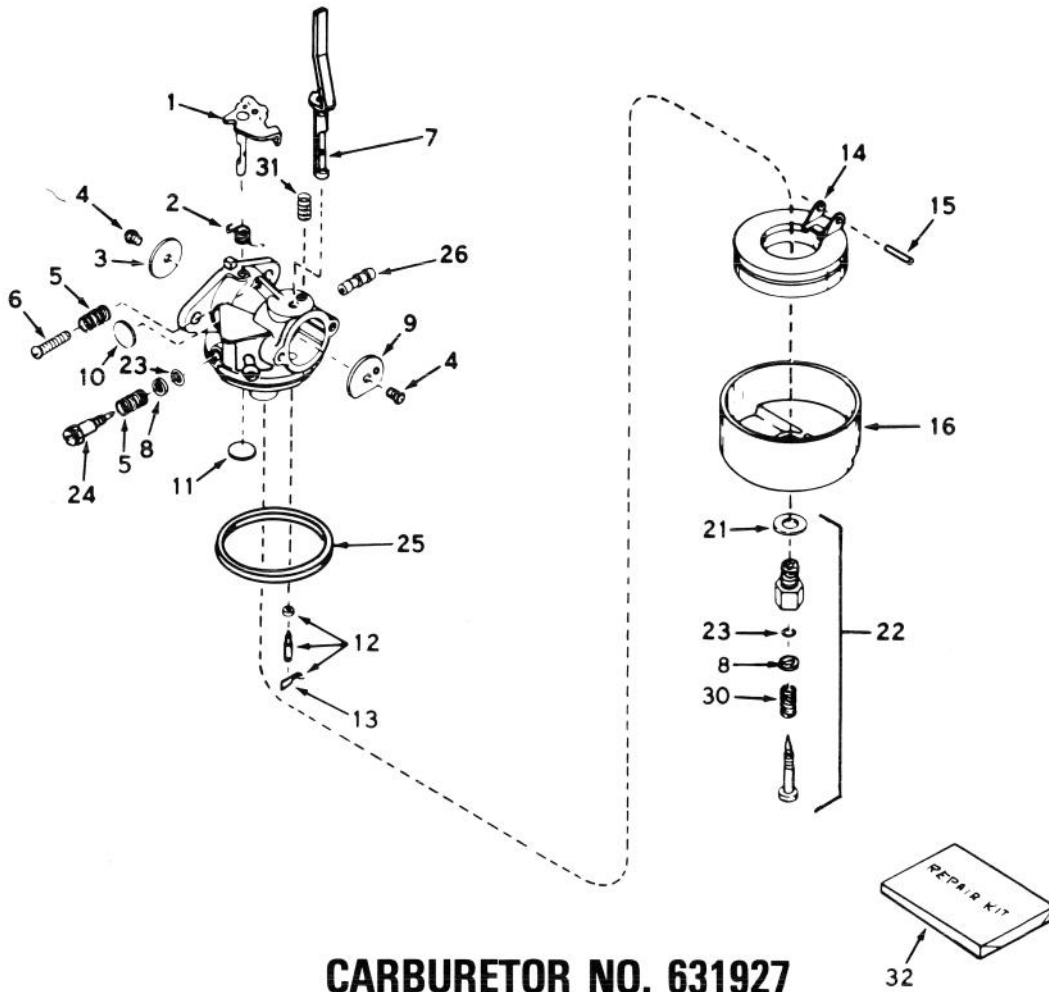
## (5 H.P. SNOWTHROWER MODEL NO. 38040)



**ENGINE, TECUMSEH MODEL NO. H50-65440 M (Continued)**  
**(5 H.P. SNOWTHROWER MODEL NO. 38040)**

| Ref. No. | Part No. | Description                            | No. Used |
|----------|----------|--|----------|
| 94       | 32398    | Bracket, Choke                         | 1        |
| 95       | 28820    | Screw, Fil. Hd.                        | 2        |
| 96       | 34672    | Cover, Carburetor                      | 1        |
| 97       | 650257   | Screw, Pan Hd.                         | 2        |
| 98       | 650765   | Screw, Hex Washer Hd.<br>Self-Drilling | 1        |
| 99       | 650760   | Screw, Pan Hd.                         | 1        |
| 100      | 29538    | Base, Engine Mounting                  | 1        |
| 102      | *27930   | Gasket, Muffler                        | 1        |
| 103      | 32401    | Muffler                                | 1        |
| 104      | 650694A  | Screw, Hex Flange Hd.                  | 1        |
| 105      | 30196    | Screw, Fil. Hd.                        | 1        |
| 106      | 31845    | Shaft, Mechanical Governor             | 1        |
| 107      | 30591    | Gear Assy., Governor                   | 1        |
| 108      | 29193    | Ring, Retaining                        | 1        |
| 109      | 20588A   | Spool, Governor                        | 1        |
| 110      | 26073    | Washer                                 | 1        |
| 111      | 33166A   | Plate, Fuel Tank Mounting              | 1        |
| 112      | 33167    | Bracket, Fuel Tank Mounting            | 1        |
| 113      | 650561   | Screw, Hex Washer Hd.                  | 1        |
| 114      | 33120    | Tank, Fuel (Incl. Ref.<br>#115 & 116)  | 1        |
| 115      | 30998B   | Cap, Fuel Tank                         | 1        |
| 116      | 650665   | Screw, Hex Washer Hd. Self-tap         | 2        |
| 117      | 30962    | Line, Fuel                             | 1        |
| 118      | 29774    | Line, Fuel                             | 1        |
| 119      | 32961    | Valve, Shut-off                        | 1        |
| 120      | 650128   | Screw, Fil. Hd.                        | 1        |
| 121      | 30622    | Extension, Blower Housing              | 1        |
| 123      | 29716    | Screw, Pan Hd.                         | 4        |
| 129      | 30884    | Key, Flywheel                          | 1        |
| 130      | 31843A   | Bracket, Governor Gear                 | 1        |
| 131      | 28763    | Screw, Hex Washer Hd.                  | 2        |
| 133      | 650493   | Screw, Hex Hd.                         | 1        |

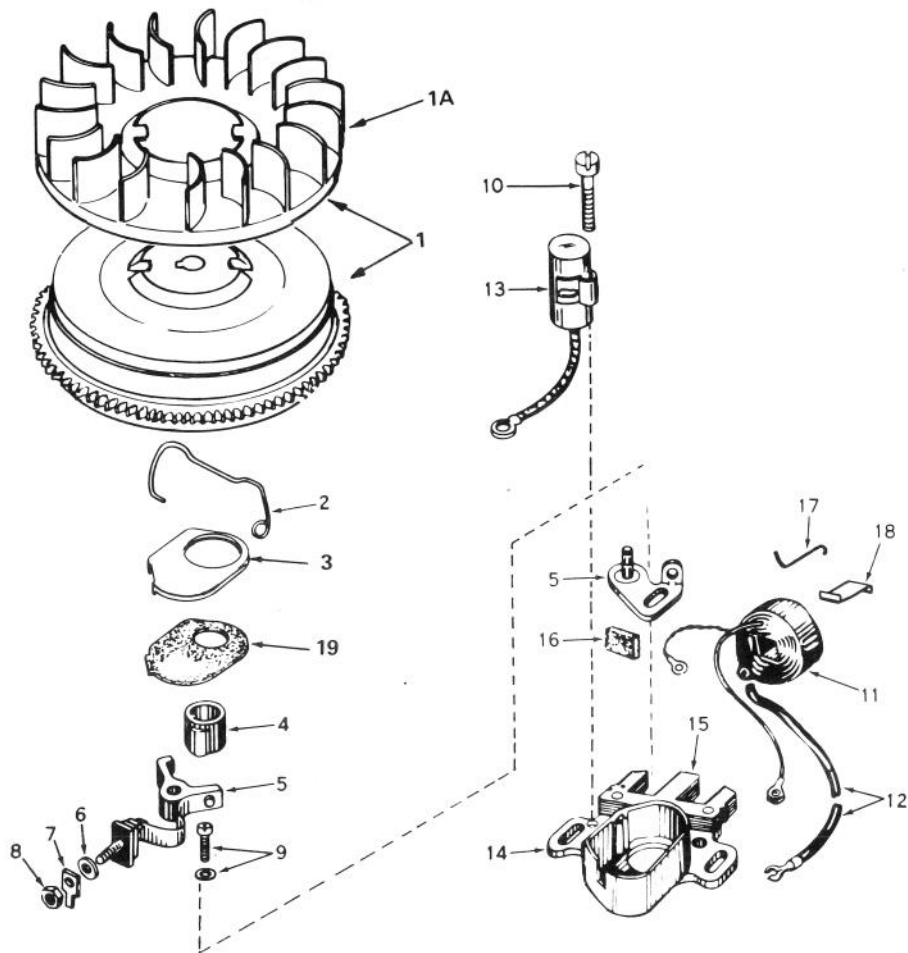
| Ref. No. | Part No. | Description  | No. Used |
|----------|----------|--|----------|
| 134      | 34664    | Control Assy., Remote Speed<br>(Incl. Ref. #90 thru 93)  | 1        |
| 135      | 650760   | Screw, Pan Hd.   | 1        |
| 136      | 33013    | Cover, Starter Bubble  | 1        |
| 137      | 32312    | Retainer, Primer Bulb  | 1        |
| 138      | 32180B   | Line, Primer   | 1        |
| 139      | 32182    | Primer Assy. (Incl. Ref.<br>#137, 140 & 141)   | 1        |
| 140      | 32183    | Bulb, Primer   | 1        |
| 141      | 32184    | Body, Primer   | 1        |
| 144      | 650542   | Screw, Hex Hd.   | 4        |
| 145      | 33876    | Gasket, Stator   | 1        |
| 146      | 34240    | Wire, Ground   | 1        |
| 147      | 31546    | Bushing, Crankshaft  | 1        |
| 152      | 34127    | Guard, Starter   | 1        |
| 154      | 32576    | Seal, Snow Guard   | 1        |
| 158      | 26460    | Clamp, Fuel Line   | 4        |
| 159      | 27793    | Clip, Conduit  | 1        |
| 160      | 28942    | Screw, Hex Washer Hd.  | 1        |
| 163      | 32125    | Cup, Starter   | 1        |
| 164      | 590417   | Screen, Starter Cup  | 1        |
| 166      | 610694A  | Magneto (The complete<br>magneto is not available as<br>an assembly. The magneto<br>number is shown for ref-<br>erence purposes only. Order<br>component parts in-<br>dividually as shown in<br>parts list.) | 1        |
| 167      | 631927   | Carburetor (Incl. Ref. #75)  | 1        |
| 168      | 590473   | Starter Assy., Rewind  | 1        |
| 169      | 33235    | Gasket Set (Incl. Items<br>Marked *)   | 1        |



**CARBURETOR NO. 631927**  
**(5 H.P. SNOWTHROWER MODEL NO. 38040)**

| Ref. No. | Part No. | Description   | No. Used |
|----------|----------|---|----------|
| 1        | 31834    | Shaft & Lever Assy., Throttle                       | 1        |
| 2        | 630731   | Spring, Throttle Return                             | 1        |
| 3        | 631036   | Shutter, Throttle                                   | 1        |
| 4        | 650506   | Screw   | 2        |
| 5        | 630766   | Spring, Idler Regulating Screw                      | 2        |
| 6        | 650417   | Screw, Idle Regulating                              | 1        |
| 7        | 631913   | Shaft & Lever Assy., Choke                          | 1        |
| 8        | 630739   | Washer, Flat  | 2        |
| 9        | 631815   | Shutter, Choke                                      | 1        |
| 10       | *630748  | Plug, Welch   | 1        |
| 11       | *631027  | Plug, Welch   | 1        |
| 12       | *631021  | Inlet Needle, Seat & Clip Assy.<br>(Incl. Ref. #13) | 1        |
| 13       | 631022   | Clip, Inlet Needle                                  | 1        |

| Ref. No. | Part No. | Description  | No. Used |
|----------|----------|--|----------|
| 14       | 632019   | Float, Carburetor  | 1        |
| 15       | *631024  | Shaft, Float   | 1        |
| 16       | 631867   | Bowl, Float  | 1        |
| 21       | 27110    | Gasket, Bowl-to-body   | 1        |
| 22       | *31839   | Adjustment Screw Assy., Main<br>(Incl. Ref. #8, 21, 23 & 30) | 1        |
| 23       | *630740  | "O" Ring, Adjustment Screw                                   | 2        |
| 24       | *631078  | Screw, Idle Adjustment                                       | 1        |
| 25       | *631028  | Gasket, Bowl-to-body   | 1        |
| 26       | 631803   | Fitting, Fuel Inlet  | 1        |
| 30       | 630738   | Spring, Main Adjustment Screw                                | 1        |
| 31       | 630735   | Spring, Choke Stop   | 1        |
| 32       | 31840    | Repair Kit (Incl. Items<br>Marked *)                         | 1        |

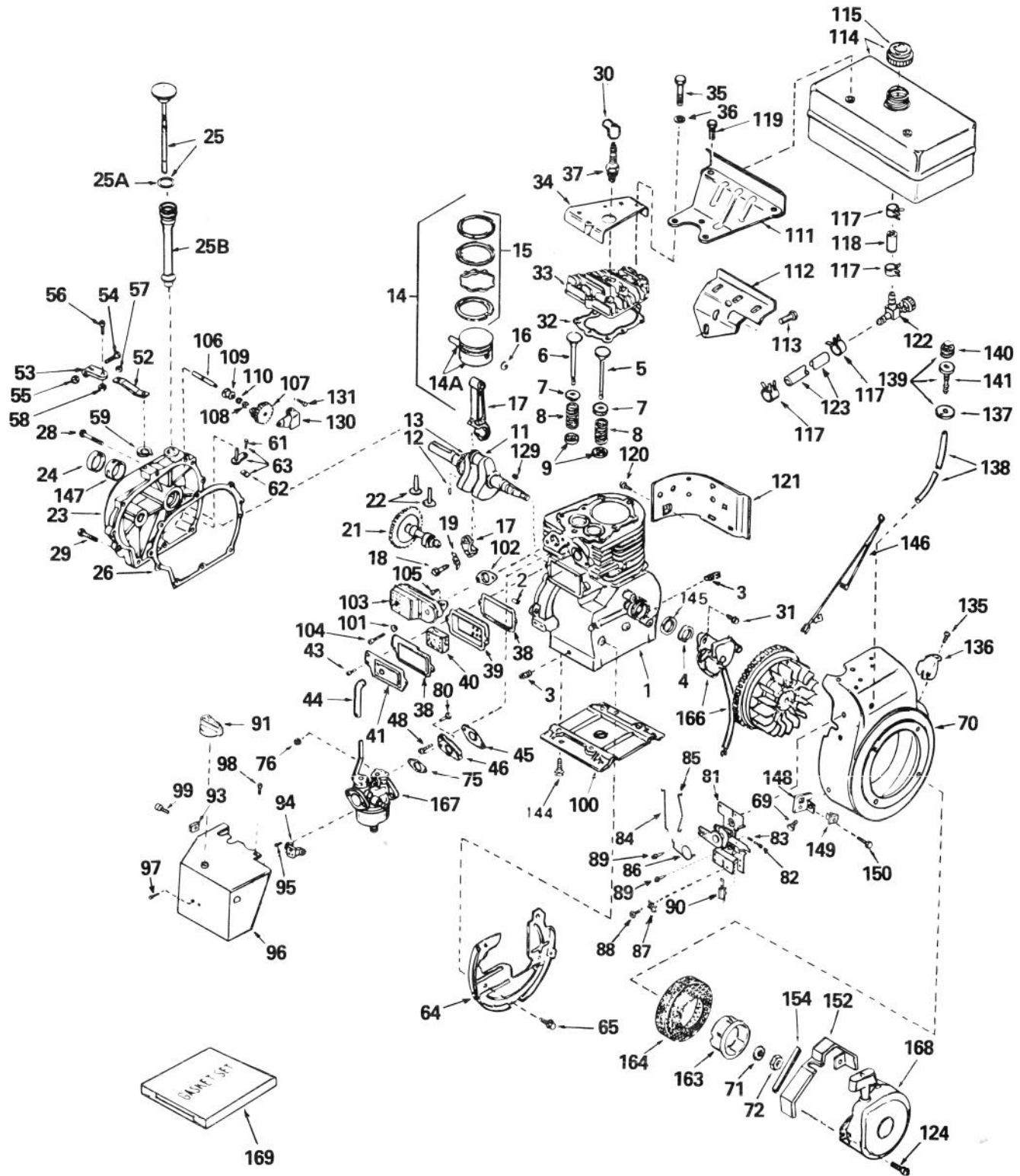


**MAGNETO NO. 610694A**  
**(5 AND 7 H.P. SNOWTHROWER MODEL NOS. 38040 AND 38050)**

| Ref. No. | Part No. | Description                 | No. Used |
|----------|----------|-----------------------------|----------|
| 1        | 30811A   | Flywheel (Incl. Ref. #1A)   | 1        |
| 1A       | 610934   | Fan                         | 1        |
| 2        | 30551    | Spring, Breaker Box         | 1        |
| 3        | 610947   | Cover, Breaker Box Dust     | 1        |
| 4        | 30992    | Cam, Breaker                | 1        |
| 5        | 30547A   | Contact Assy., Breaker      | 1        |
| 6        | 610385   | Washer, Terminal            | 1        |
| 7        | 33356    | Tab, Ground Terminal        | 1        |
| 8        | 610408   | Nut, Terminal               | 1        |
| 9        | 29181    | Screw & Washer, Breaker     | 1        |
| 10       | 610593   | Screw, Condenser Fastening  | 1        |
| 11       | 30560A   | Coil Assy. (Incl. Ref. #12) | 1        |
| 12       | 30554    | Wire, Lead                  | 1        |
| 13       | 30548B   | Condenser                   | 1        |
| 14       | 30545    | Core & Plate                | 1        |

| Ref. No.   | Part No. | Description   | No. Used |
|--|----------|---|----------|
| 15   | 30561B   | Stator Assy. (Incl. Ref. #2, 3, 5 thru 14 & 16 thru 19) | 1        |
| 16   | 30549    | Felt, Cam Wiper   | 1        |
| 17   | 31311    | Clip, Coil Locking                                      | 1        |
| 18   | 29629    | Spring, Coil Wedge                                      | 1        |
| 19   | 610955   | Gasket, Dust Cover                                      | 1        |
| <p>*The complete magneto is not available as an assembly. The magneto number is shown for reference purposes only. Order component parts individually, as shown in parts list.</p> |          |   |          |

# ENGINE, TECUMSEH MODEL NO. H70-130176F (7 H.P. SNOWTHROWER MODEL NO. 38050)





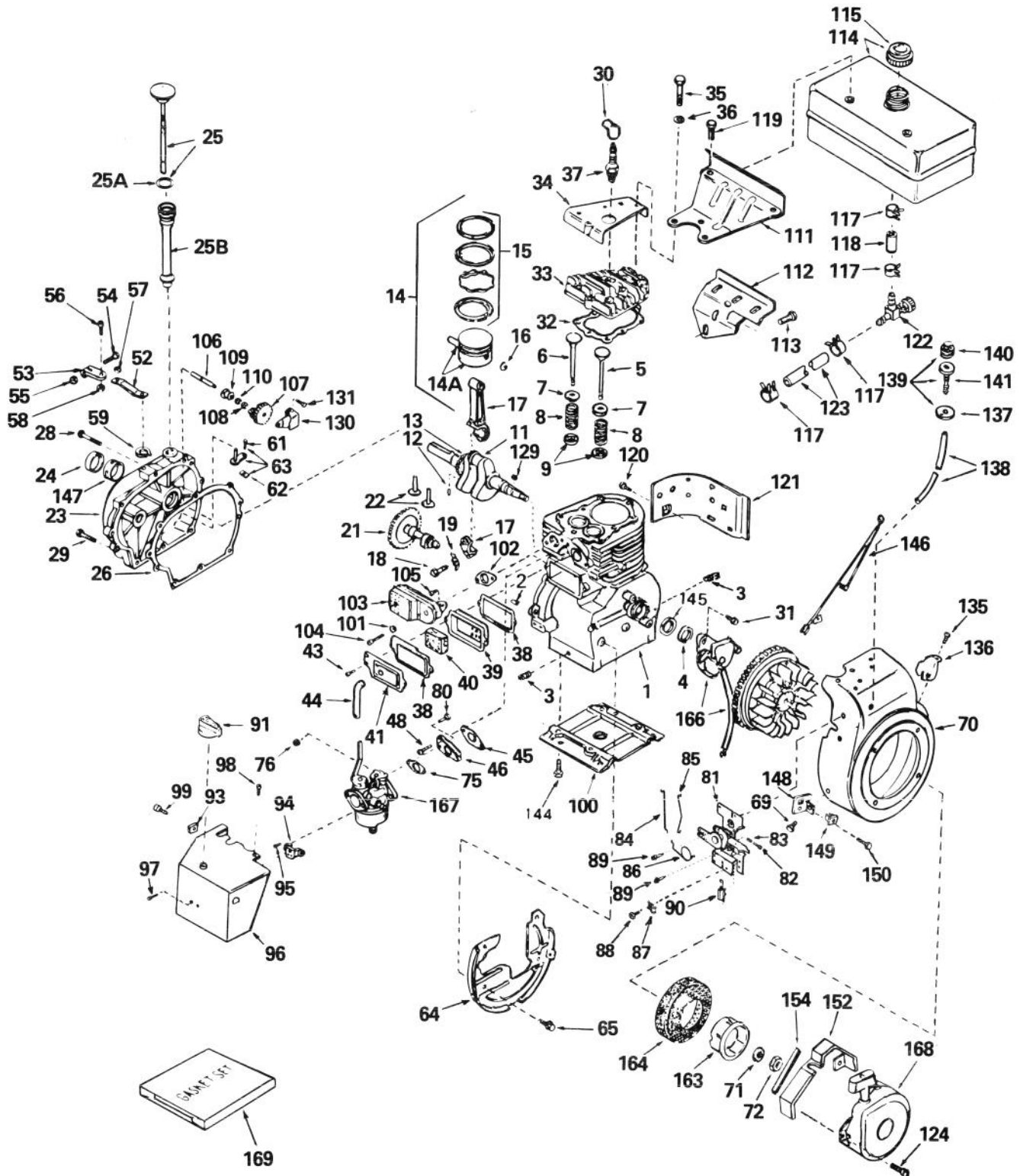
# ENGINE, TECUMSEH MODEL NO. H70-130176F (7 H.P. SNOWTHROWER MODEL NO. 38050)

| Ref. No. | Part No. | Description   | No. Used |
|----------|----------|---|----------|
| 1        | 32586B   | Cylinder Assy. (Incl. Ref. #2, 3 & 4)                               | 1        |
| 2        | 27652    | Pin, Dowel  | 2        |
| 3        | 27642    | Plug, Sq. Hd. Pipe (Oil Drain)                                      | 2        |
| 4        | 32630    | Seal, Oil   | 1        |
| 5        | 32783    | Valve, Intake (Std.) (Incl. Ref. #9)                                | 1        |
| 5        | 32784    | Valve, Intake (1/32" Oversize) (Incl. Ref. #9)                      | 1        |
| 6        | 27878A   | Valve, Exhaust (Std.) (Incl. Ref #9)                                | 1        |
| 6        | 27880A   | Valve, Exhaust (1/32" Oversize) (Incl. Ref. #9)                     | 1        |
| 7        | 27882    | Cap, Upper Valve Spring   | 2        |
| 8        | 27881    | Spring, Valve   | 2        |
| 9        | 32581    | Cap, Lower Valve Spring   | 2        |
| 11       | 32587    | Crankshaft Assy. (Incl. Ref #12 & 13)                               | 1        |
| 12       | 29783    | Pin, Crankshaft Gear  | 1        |
| 13       | 27884    | Gear, Crankshaft  | 1        |
| 14       | 34517    | Piston, Pin & Ring Assy. (Incl. Ref. #14A, 15 & 16) (Std.)          | 1        |
| 14       | 34518    | Piston, Pin & Ring Assy. (Incl. Ref. #14A, 15 & 16) (.010 Oversize) | 1        |
| 14       | 34519    | Piston, Pin & Ring Assy. (Incl. Ref. #14A, 15 & 16) (.020 Oversize) | 1        |
| 14A      | 32592B   | Piston & Pin Assy. (Incl. Ref. #16) (Std.)                          | 1        |
| 14A      | 32593B   | Piston & Pin Assy. (Incl. Ref. #16) (.010 Oversize)                 | 1        |
| 14A      | 32594B   | Piston & Pin Assy. (Incl. Ref. #16) (.020 Oversize)                 | 1        |
| 15       | 32595    | Ring Set, Piston (Std.)   | 1        |
| 15       | 32596    | Ring Set, Piston (.010 Oversize)                                    | 1        |
| 15       | 32597    | Ring Set, Piston (.020 Oversize)                                    | 1        |
| 16       | 27888    | Ring, Piston Pin Retaining  | 2        |
| 17       | 32591C   | Rod Assy., Connecting (Incl. Ref #18 & 19)                          | 1        |
| 18       | 650662B  | Screw, Connecting Rod   | 2        |
| 19       | 34242    | Dipper, Oil   | 1        |
| 21       | 32115    | Camshaft (Mech. Compression Release)                                | 1        |
| 22       | 34034    | Lifter, Valve   | 2        |
| 23       | 31303B   | Cover, Cylinder (Incl. Ref. #24, 106, & 147)                        | 1        |
| 24       | 28427    | Seal, Oil   | 1        |
| 25       | 34011A   | Dipstick, Oil (Incl. Ref. #25A)                                     | 1        |

| Ref. No. | Part No.        | Description   | No. Used |
|----------|-----------------|---|----------|
| 25A      | 33590           | "O" Ring  | 1        |
| 25B      | 33893A          | Tube, Oil Fill  | 1        |
| 26       | *30684          | Gasket, Cylinder Cover  | 1        |
| 28       | 650488          | Screw, Hex Hd.  | 7        |
| 29       | 650493          | Screw, Hex Hd.  | 1        |
| 30       | 610118          | Cover, Spark Plug   | 1        |
| 31       | 650489          | Screw, Hex Hd.  | 2        |
| 32       | *32631          | Gasket, Cylinder Head   | 1        |
| 33       | 30938A          | Head, Cylinder (Incl. 3 of Ref. #35)  | 1        |
| 34       | 30939A          | Cover, Cylinder Head  | 1        |
| 35       | 650697A         | Screw, Hex Flange Hd.   | 8        |
| 36       | 650691          | Washer, Flat  | 1        |
| 37       | 33636           | Plug, Spark (Champion J-8 or equivalent) Except for Canada                      | 1        |
| 37       | 34251<br>Canada | Resistor Spark Plug (Canadian Regulations require RJ-17LM Resistor spark plug.) | 1        |
| 38       | *27896          | Gasket, Valve Spring Cover  | 2        |
| 39       | 28423           | Body Assy., Breather  | 1        |
| 40       | 28424           | Element, Breather   | 1        |
| 41       | 28425           | Cover, Valve Spring   | 1        |
| 43       | 650128          | Screw, Fil. Hd.   | 2        |
| 44       | 27627           | Tube, Breather  | 1        |
| 45       | *27915          | Gasket, Intake  | 1        |
| 46       | 30195A          | Flange, Carburetor (Incl. Ref. #76 & 80)  | 1        |
| 48       | 30196           | Screw, Fil. Hd.   | 2        |
| 52       | 33454           | Lever, Governor   | 1        |
| 53       | 29916           | Clamp, Governor Lever   | 1        |
| 54       | 29826           | Screw, Hex Washer Hd.   | 1        |
| 55       | 29216           | Nut, Lock   | 1        |
| 56       | 650548          | Screw, Hex Washer Hd.   | 1        |
| 57       | 29918           | Washer, Lock  | 1        |
| 58       | 30322           | Nut & Lockwasher  | 1        |
| 59       | 29642           | Ring, Retaining   | 1        |
| 61       | 650494          | Screw, Fil. Hd.   | 1        |
| 62       | 30700           | Yoke, Governor  | 1        |
| 63       | 30699C          | Rod Assy., Governor (Incl. Ref. #61 & 62)                                       | 1        |
| 64       | 29536           | Baffle, Blower Housing  | 1        |
| 65       | 650561          | Screw, Hex Washer Hd.   | 2        |
| 69       | 29747A          | Screw, Hex Hd.  | 2        |
| 70       | 32158D          | Housing, Blower (Incl. Ref. #135 & 136)   | 1        |
| 71       | 650490          | Washer, Belleville  | 1        |
| 72       | 8116            | Nut, Crankshaft   | 1        |
| 75       | *31688          | Gasket, Carburetor  | 1        |
| 76       | 29752           | Nut & Lockwasher Assy.  | 2        |
| 80       | 650572          | Screw, Flat Hd.   | 2        |
| 81       | 34664           | Control Assy., Speed (Incl. Ref #82, 83, 86 & 90)                               | 1        |

# ENGINE, TECUMSEH MODEL NO. H70-130176F (Continued)

## (7 H.P. SNOWTHROWER MODEL NO. 38050)

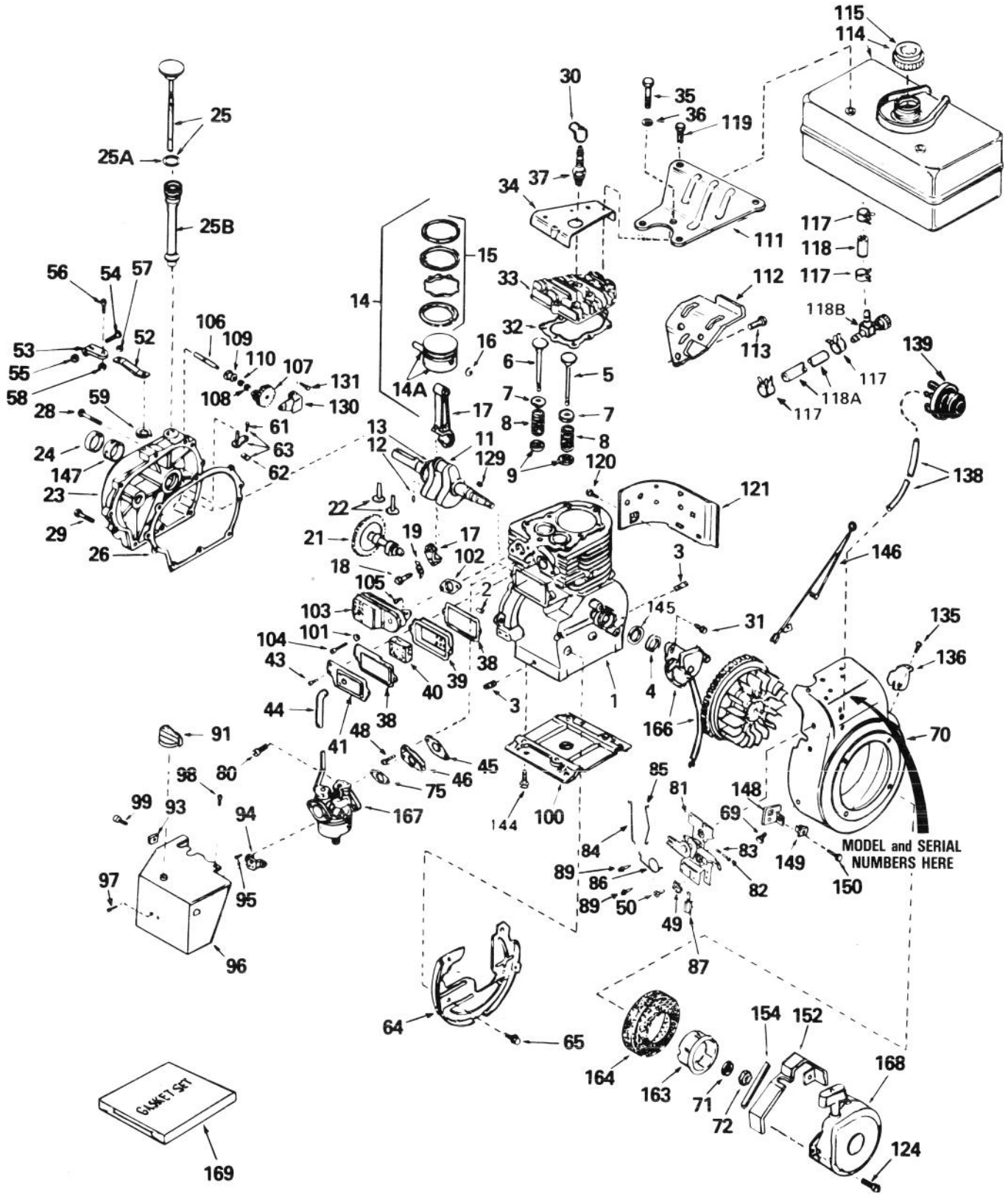


**ENGINE, TECUMSEH MODEL NO. H70-130176F (Continued)**  
**(7 H.P. SNOWTHROWER MODEL NO. 38050)**

| Ref. No. | Part No. | Description                               | No. Used |
|----------|----------|---|----------|
| 82       | 650549   | Screw, Fil. Hd                            | 1        |
| 83       | 31342    | Spring, Compression                       | 1        |
| 84       | 34661    | Link, Governor                            | 1        |
| 85       | 34662    | Link, Throttle                            | 1        |
| 86       | 34663    | Spring, Speed Control                     | 1        |
| 87       | 27793    | Clip, Conduit                             | 1        |
| 88       | 28942    | Screw, Hex Washer Hd.                     | 1        |
| 89       | 650821   | Screw, Hex Washer Hd.<br>Thread Cutting   | 2        |
| 90       | 610973   | Terminal Assy.                            | 1        |
| 91       | 34585    | Knob, Control                             | 1        |
| 93       | 650764   | Nut, "U" Type                             | 1        |
| 94       | 32398    | Bracket, Carburetor Cover                 | 1        |
| 95       | 28820    | Screw, Fil. Hd.                           | 2        |
| 96       | 34672    | Cover, Carburetor                         | 1        |
| 97       | 650257   | Screw, Pan Hd.                            | 2        |
| 98       | 650765   | Screw, Hex Washer Hd.<br>Self-Drilling    | 1        |
| 99       | 650760   | Screw, Pan Hd.                            | 1        |
| 100      | 29538    | Base, Engine Mounting                     | 1        |
| 101      | 26073    | Washer, Flat                              | 1        |
| 102      | *27930   | Gasket, Muffler                           | 1        |
| 103      | 32401    | Muffler                                   | 1        |
| 104      | 650694A  | Screw, Hex Flange Hd.                     | 1        |
| 105      | 30196    | Screw, Fil. Hd.                           | 1        |
| 106      | 31845    | Shaft, Mechanical Governor                | 1        |
| 107      | 30591    | Gear Assy., Governor<br>(Incl. Ref. #110) | 1        |
| 108      | 29193    | Ring, Retaining                           | 1        |
| 109      | 30588A   | Spool, Governor                           | 1        |
| 110      | 30590A   | Washer, Flat                              | 1        |
| 111      | 34159    | Plate, Fuel Tank Mounting                 | 1        |
| 112      | 34158    | Bracket, Fuel Tank Mounting               | 1        |
| 113      | 650561   | Screw, Hex Washer Hd.                     | 1        |
| 114      | 34186    | Tank Assy., Fuel<br>(Incl. Ref. #115)     | 1        |
| 115      | 30998B   | Cap, Fuel                                 | 1        |
| 117      | 26460    | Clamp, Fuel Line                          | 4        |
| 118      | 30962    | Line, Fuel                                | 1        |

| Ref. No. | Part No. | Description  | No. Used |
|----------|----------|--|----------|
| 119      | 650665   | Screw, Hex Washer Hd.<br>Self-Tap  | 2        |
| 120      | 650128   | Screw, Fil. Hd.  | 1        |
| 121      | 30622    | Extension, Blower Housing  | 1        |
| 122      | 32961    | Valve, Shut-Off  | 1        |
| 123      | 29774    | Line, Fuel   | 1        |
| 124      | 29716    | Screw, Pan Hd.   | 4        |
| 129      | 32589    | Key, Flywheel  | 1        |
| 130      | 31843A   | Bracket, Governor Gear   | 1        |
| 131      | 28763    | Screw, Hex Washer Hd.  | 2        |
| 135      | 650760   | Screw, Pan Hd.   | 1        |
| 136      | 33013    | Cover, Starter Bubble  | 1        |
| 137      | 32312    | Retainer, Primer Bulb  | 1        |
| 138      | 32180B   | Line, Primer   | 1        |
| 139      | 32182    | Primer Assy. (Incl. Ref.<br>#137, 140 & 141)   | 1        |
| 140      | 32183    | Bulb, Primer   | 1        |
| 141      | 32184    | Body Primer  | 1        |
| 144      | 650542   | Screw, Hex Hd.   | 4        |
| 145      | 33876    | Gasket, Stator   | 1        |
| 146      | 34240    | Wire, Ground   | 1        |
| 147      | 31546    | Bushing, Crankshaft  | 1        |
| 148      | 34126    | Bracket, Grommet Mounting  | 1        |
| 149      | 28545    | Grommet, Plastic   | 1        |
| 150      | 650643   | Screw, Pan Hd. Self-Tap  | 1        |
| 152      | 34127    | Guard, Starter   | 1        |
| 154      | 32576    | Seal, Snow Guard   | 1        |
| 163      | 32125    | Cup, Starter   | 1        |
| 164      | 590417   | Screen, Starter Cup  | 1        |
| 166      | 610694A  | Magneto (The complete mag-<br>neto is not available as an<br>assembly. The magneto num-<br>ber is shown for reference<br>purposes only. Order com-<br>ponent parts individually,<br>as shown in parts list.) | 1        |
| 167      | 631920   | Carburetor (Incl. Ref. #75)  | 1        |
| 168      | 590473   | Starter Assy., Rewind  | 1        |
| 169      | 33239    | Gasket Set (Incl. Items<br>Marked *)   | 1        |

# ENGINE, TECUMSEH MODEL NO. H70-130176H (7 H.P. SNOWTHROWER MODEL NO. 38050)



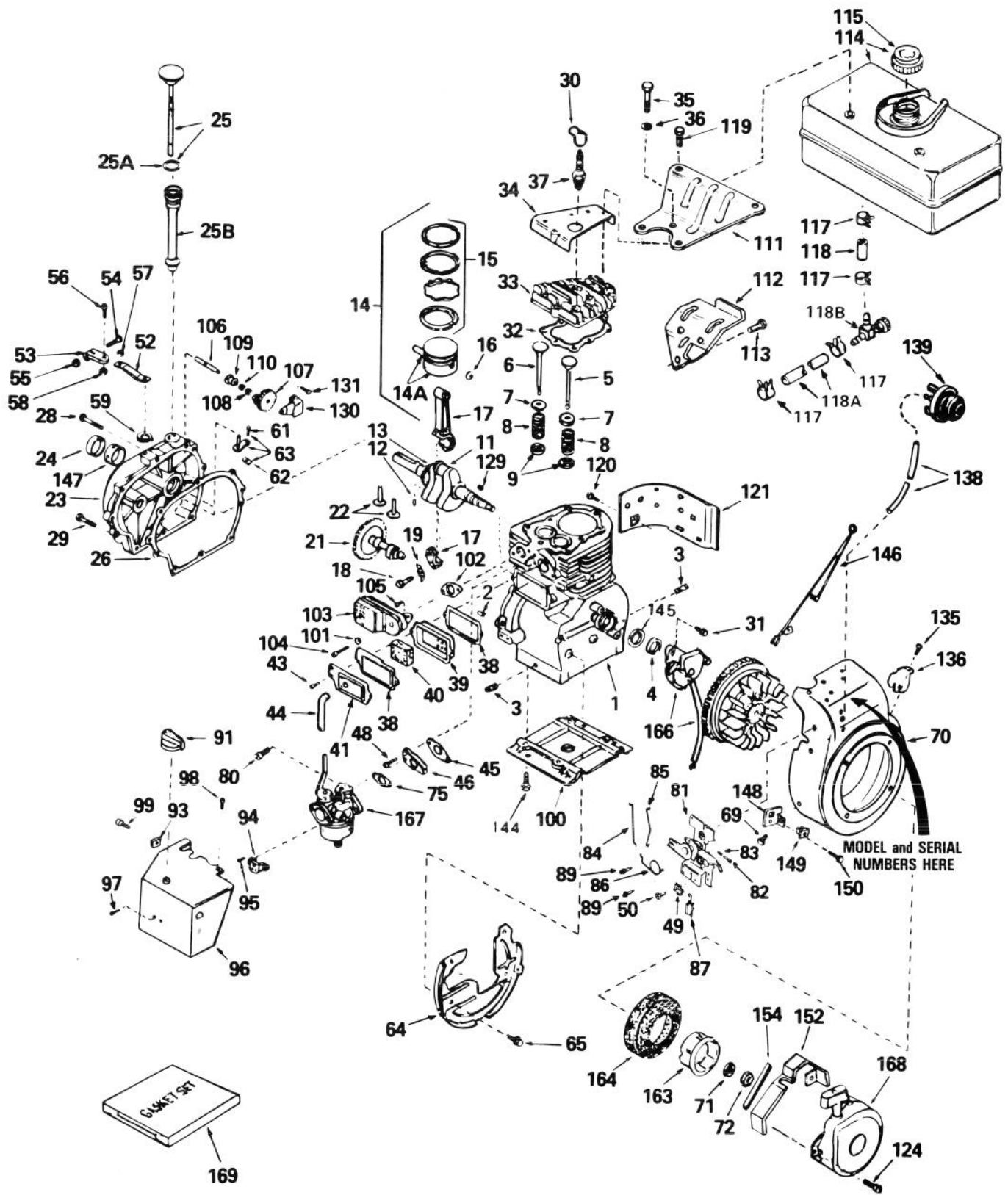
# ENGINE, TECUMSEH MODEL NO. H70-130176H (7 H.P. SNOWTHROWER MODEL NO. 38050)

| Ref. No. | Part No. | Description  | No. Used | Ref. No. | Part No.        | Description  | No. Used |
|----------|----------|--|----------|----------|-----------------|--|----------|
| 1        | 32586B   | Cylinder Assy.<br>(Incl. Ref. #2, 3 & 4)                                   | 1        | 29       | 650493          | Screw, Hex Hd.   | 1        |
| 2        | 27652    | Pin, Dowel   | 2        | 30       | 610118          | Cover, Spark Plug  | 1        |
| 3        | 27642    | Plug, Sq. Hd. Pipe   | 2        | 31       | 650489          | Screw, Hex Hd.   | 2        |
| 4        | 32630    | Seal, Oil  | 1        | 32       | *32631          | Gasket, Cylinder Head  | 1        |
| 5        | 32783    | Valve, Intake (Std.)<br>(Incl. Ref. #9)                                    | 1        | 33       | 30938A          | Head, Cylinder<br>(Incl. 3 of No. 35)  | 1        |
| 5        | 32784    | Valve, Intake (1/32" oversize)<br>(Incl. Ref. #9)                          | 1        | 34       | 30939A          | Cover, Cylinder Head   | 1        |
| 6        | 27878A   | Valve, Exhaust (Std.)<br>(Incl. Ref. #9)                                   | 1        | 35       | 650697A         | Screw, Hex Flange Hd.  | 8        |
| 6        | 27880A   | Valve, Exhaust (1/32" oversize)<br>(Incl. Ref. #9)                         | 1        | 36       | 650691          | Washer, Flat   | 1        |
| 7        | 27882    | Cap, Upper Valve Spring  | 2        | 37       | 33636           | Plug, Spark (Champion<br>J-8 or equivalent)<br>Except for Canada                     | 1        |
| 8        | 27881    | Spring, Valve  | 2        | 37       | 34251<br>Canada | Resistor Spark Plug (Canadian<br>Regulations require RJ-17LM<br>resistor spark plug) | 1        |
| 9        | 32581    | Cap, Lower Valve Spring  | 2        | 38       | *27896          | Gasket, Valve Spring Cover   | 2        |
| 11       | 34889    | Crankshaft Assy.<br>(Incl. Ref. #12 & 13)                                  | 1        | 39       | 28423           | Body Assy., Breather   | 1        |
| 12       | 29783    | Pin, Crankshaft Gear   | 1        | 40       | 28424           | Element, Breather  | 1        |
| 13       | 27884    | Gear, Crankshaft   | 1        | 41       | 28425           | Cover, Valve Spring  | 1        |
| 14       | 34517    | Piston, Pin & Ring Assy., (Std.)<br>(Incl. Ref. #14A, 15 & 16)             | 1        | 43       | 650128          | Screw, Fil. Hd.  | 2        |
| 14       | 34518    | Piston, Pin & Ring Assy.<br>(.010 oversize) (Incl.<br>Ref. #14A, 15 & 16)  | 1        | 44       | 27627           | Tube, Breather   | 1        |
| 14       | 34519    | Piston, Pin & Ring Assy.,<br>(.020 oversize) (Incl.<br>Ref. #14A, 15 & 16) | 1        | 45       | *27915          | Gasket, Intake   | 1        |
| 14A      | 32592B   | Piston & Pin Assy. (Std.)<br>(Incl. Ref. #16)                              | 1        | 46       | 34712           | Flange, Carburetor<br>(Incl. Ref. #80)   | 1        |
| 14A      | 32593B   | Piston & Pin Assy. (.010<br>oversize) (Incl. Ref. #16)                     | 1        | 48       | 30196           | Screw, Fil. Hd.  | 2        |
| 14A      | 32594B   | Piston & Pin Assy. (.020<br>oversize) (Incl. Ref. #16)                     | 1        | 49       | 27793           | Clip, Conduit  | 1        |
| 15       | 32595    | Ring Set, Piston (Std.)  | 1        | 50       | 28942           | Screw, Hex Washer Hd.  | 1        |
| 15       | 32596    | Ring Set, Piston (.010 oversize)   | 1        | 52       | 33454           | Lever, Governor  | 1        |
| 15       | 32597    | Ring Set, Piston (.020 oversize)   | 1        | 53       | 29916           | Clamp, Governor Lever  | 1        |
| 16       | 27888    | Ring, Piston Pin Retaining   | 2        | 54       | 29826           | Screw, Hex Washer Hd.  | 1        |
| 17       | 32591C   | Rod Assy., Connecting<br>(Incl. Ref. #18 & 19)                             | 1        | 55       | 29216           | Locknut, Hex   | 1        |
| 18       | 650662B  | Screw, Connecting Rod  | 2        | 56       | 650548          | Screw, Hex Washer Hd.  | 1        |
| 19       | 34242    | Dipper, Oil  | 1        | 57       | 29918           | Washer, Lock   | 1        |
| 21       | 32115    | Camshaft (Mechanical<br>Compression Release)                               | 1        | 58       | 30322           | Locknut, Hex   | 1        |
| 22       | 34034    | Lifter, Valve  | 2        | 59       | 29642           | Ring, Retaining  | 1        |
| 23       | 31303B   | Cover, Cylinder (Incl.<br>Ref. #24, 106 & 147)                             | 1        | 61       | 650494          | Screw, Fil. Hd.  | 1        |
| 24       | 28427    | Seal, Oil  | 1        | 62       | 30700           | Yoke, Governor   | 1        |
| 25       | 34011A   | Dipstick, Oil<br>(Incl. Ref. #25A)   | 1        | 63       | 30699C          | Rod Assy., Governor<br>(Incl. Ref. #61 & 62)   | 1        |
| 25A      | 33590    | "O" Ring   | 1        | 64       | 29536           | Baffle, Blower Housing   | 1        |
| 25B      | 33893A   | Tube, Oil Fill   | 1        | 65       | 650561          | Screw, Hex Washer Hd.  | 2        |
| 26       | *30684   | Gasket, Cylinder Cover   | 1        | 69       | 29747A          | Screw, Hex Hd.   | 2        |
| 28       | 650488   | Screw, Hex Hd.   | 7        | 70       | 34830           | Housing, Blower<br>(Incl. Ref. #135 & 136)   | 1        |
|          |          |  |          | 71       | 650815          | Washer, Belleville   | 1        |
|          |          |  |          | 72       | 8116            | Nut, Crankshaft  | 1        |
|          |          |  |          | 75       | *31688          | Gasket, Carburetor   | 1        |
|          |          |  |          | 80       | 650372          | Screw, Hex Hd.   | 2        |
|          |          |  |          | 81       | 34664           | Control Assy., Speed (Incl.<br>Ref. #82, 83, 86 & 87)                                | 1        |
|          |          |  |          | 82       | 650549          | Screw, Fil. Hd.  | 1        |
|          |          |  |          | 83       | 31342           | Spring, Compression  | 1        |
|          |          |  |          | 84       | 34661           | Link, Governor   | 1        |
|          |          |  |          | 85       | 34662           | Link, Throttle   | 1        |



# ENGINE, TECUMSEH MODEL NO. H70-130176H (Continued)

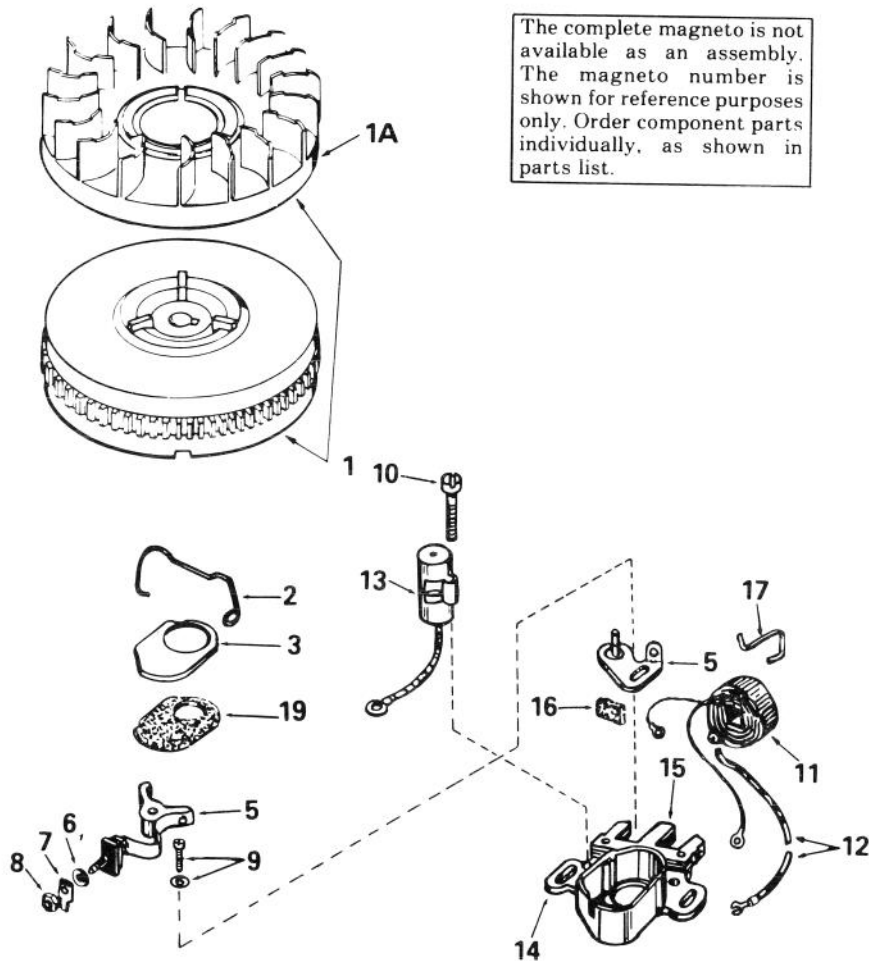
## (7 H.P. SNOWTHROWER MODEL NO. 38050)



**ENGINE, TECUMSEH MODEL NO. H70-130176H (Continued)**  
**(7 H.P. SNOWTHROWER MODEL NO. 38050)**

| Ref. No. | Part No. | Description                               | No. Used |
|----------|----------|---|----------|
| 86       | 34663    | Spring, Speed Control                     | 1        |
| 87       | 610973   | Terminal Assembly                         | 1        |
| 89       | 650821   | Screw, Hex Washer Hd.<br>Thread Cutting   | 2        |
| 91       | 34585    | Knob, Control                             | 1        |
| 93       | 650764   | Nut, "U" Type                             | 1        |
| 94       | 32398    | Bracket, Choke                            | 1        |
| 95       | 28820    | Screw, Fil. Hd.                           | 2        |
| 96       | 34672    | Cover, Carburetor                         | 1        |
| 97       | 650257   | Screw, Pan Hd.                            | 2        |
| 98       | 650765   | Screw, Hex Washer Hd.<br>Self-Drilling    | 1        |
| 99       | 650760   | Screw, Pan Hd.                            | 1        |
| 100      | 29538    | Base, Engine Mounting                     | 1        |
| 101      | 26073    | Washer, Flat                              | 1        |
| 102      | *27930   | Gasket, Muffler                           | 1        |
| 103      | 32401    | Muffler                                   | 1        |
| 104      | 650694A  | Screw, Hex Flange Hd.                     | 1        |
| 105      | 30196    | Screw, Fil. Hd.                           | 1        |
| 106      | 31845    | Shaft, Mechanical Governor                | 1        |
| 107      | 30591    | Gear Assy., Governor<br>(Incl. Ref. #110) | 1        |
| 108      | 29193    | Ring, Retaining                           | 1        |
| 109      | 30588A   | Spool, Governor                           | 1        |
| 110      | 30590A   | Washer, Flat                              | 1        |
| 111      | 34159    | Plate, Fuel Tank Mtg.                     | 1        |
| 112      | 34158    | Bracket, Fuel Tank Mtg.                   | 1        |
| 113      | 650561   | Screw, Hex Washer Hd.                     | 1        |
| 114      | 34186    | Tank Assy., Fuel<br>(Incl. Ref. #115)     | 1        |
| 115      | 34210    | Cap, Fuel                                 | 1        |
| 117      | 26460    | Clamp, Fuel Line                          | 4        |
| 118      | 30962    | Line, Fuel                                | 1        |
| 118A     | 29774    | Line, Fuel                                | 1        |
| 118B     | 32961    | Valve, Shut-off                           | 1        |
| 119      | 650665   | Screw, Hex Washer Hd.                     | 2        |

| Ref. No. | Part No. | Description   | No. Used |
|----------|----------|---|----------|
| 120      | 650128   | Screw, Fil. Hd.   | 1        |
| 121      | 30622    | Extension, Blower Housing   | 1        |
| 124      | 29716    | Screw, Pan Hd.  | 4        |
| 129      | 32589    | Key, Flywheel   | 1        |
| 130      | 31843A   | Bracket, Governor Gear  | 1        |
| 131      | 650836   | Screw, Hex Washer Hd.<br>Thread Forming   | 2        |
| 135      | 650760   | Screw, Pan Hd.  | 1        |
| 136      | 33013    | Cover, Starter Bubble   | 1        |
| 138      | 32180B   | Line, Primer  | 1        |
| 139      | 34814    | Primer Assy.  | 1        |
| 144      | 650542   | Screw, Hex Hd.  | 4        |
| 145      | 33876    | Gasket, Stator  | 1        |
| 146      | 34240    | Wire, Ground  | 1        |
| 147      | 31546    | Bushing, Crankshaft   | 1        |
| 148      | 34126    | Bracket, Grommet Mounting   | 1        |
| 149      | 28545    | Grommet, Plastic  | 1        |
| 150      | 650643   | Screw, Pan Hd. Self-Tap   | 1        |
| 152      | 34127    | Guard, Starter  | 1        |
| 154      | 32576    | Seal, Snow Guard  | 1        |
| 163      | 32125    | Cup, Starter  | 1        |
| 164      | 590417   | Screen, Starter Cup   | 1        |
| 166      | 611043   | Magneto (The complete<br>magneto is not available<br>as an assembly. The<br>magneto number is shown<br>for reference purposes<br>only. Order component<br>parts individually, as shown<br>in parts list.) | 1        |
| 167      | 631920   | Carburetor<br>(Incl. Ref. #75)  | 1        |
| 168      | 590473   | Starter Assy., Rewind   | 1        |
| 169      | 33239    | Gasket Set<br>(Includes items marked *)   | 1        |



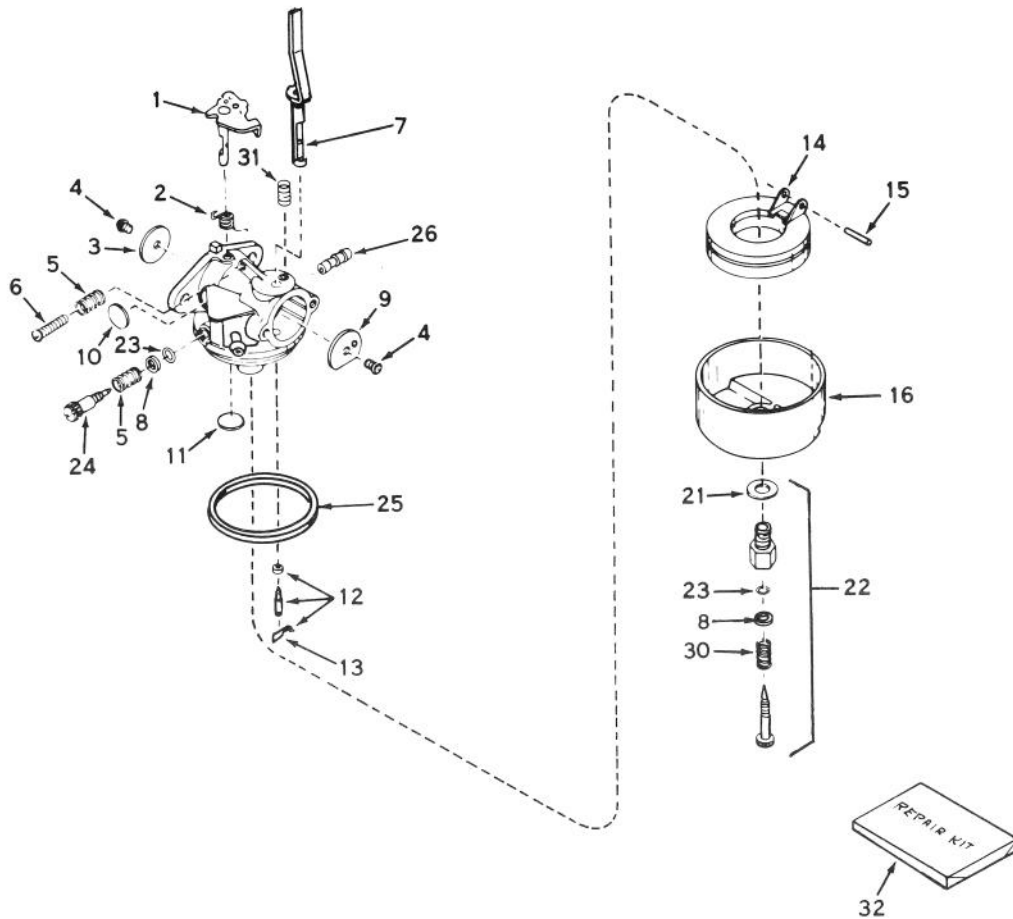
The complete magneto is not available as an assembly. The magneto number is shown for reference purposes only. Order component parts individually, as shown in parts list.

**MAGNETO NO. 611043**  
**(7 H.P. SNOWTHROWER MODEL NO. 38050)**

| Ref. No. | Part No. | Description                       | No. Used |
|----------|----------|-----------------------------------|----------|
| 1        | 611042   | Flywheel (Incl. Ref. #1A)         | 1        |
| 1A       | 610933   | Fan, Blower                       | 1        |
| 2        | 30551    | Spring, Breaker Box<br>Dust Cover | 1        |
| 3        | 610947   | Cover, Dust                       | 1        |
| 5        | 30547A   | Contact Assy., Breaker            | 1        |
| 6        | 610385   | Washer, Terminal                  | 1        |
| 7        | 33356    | Tab, Ground Terminal              | 1        |
| 8        | 610408   | Nut, Terminal                     | 1        |
| 9        | 29181    | Screw & Washer, Breaker           | 1        |
| 10       | 610593   | Screw, Condenser                  | 1        |

| Ref. No. | Part No. | Description   | No. Used |
|----------|----------|---|----------|
| 11       | 30560A   | Coil Assy., (Incl. Ref. #12)                              | 1        |
| 12       | 30554    | Wire, Lead  | 1        |
| 13       | 30548B   | Condenser   | 1        |
| 14       | 30545    | Core & Plate  | 1        |
| 15       | 30561B   | Stator Assy. (Incl. Ref. #2 thru 11, 13, 14, 16, 17 & 19) | 1        |
| 16       | 30549    | Felt, Cam Wiper   | 1        |
| 17       | 31311    | Clip, Coil Locking  | 1        |
| 19       | 610957   | Gasket, Dust Cover  | 1        |

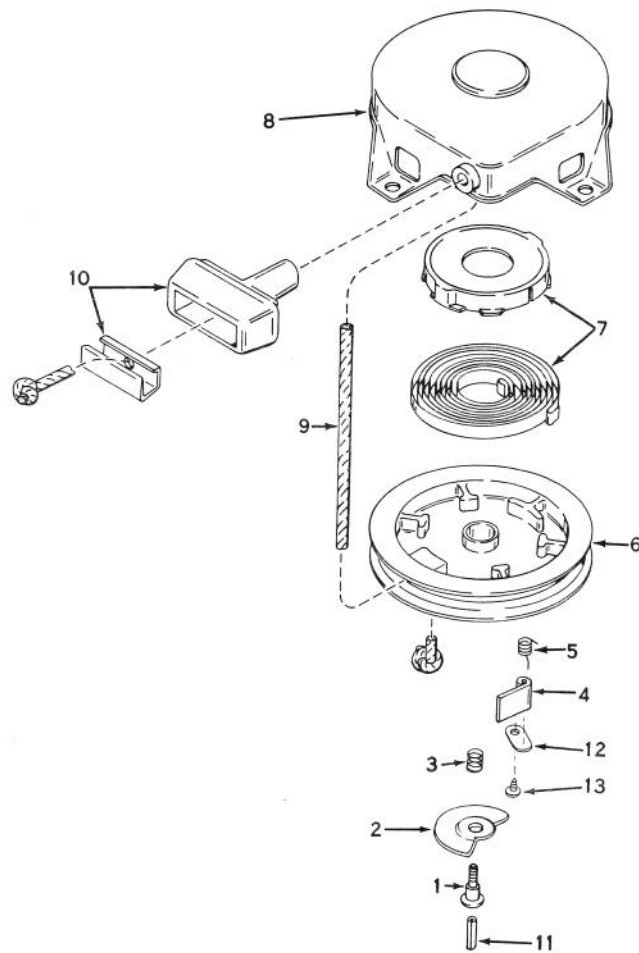
\*The complete magneto is not available as an assembly. The magneto number is shown for reference purposes only. Order component parts individually, as shown in parts list.



## CARBURETOR NO. 631920 (7 H.P. SNOWTHROWER MODEL NO. 38050)

| Ref. No. | Part No. | Description   | No. Used |
|----------|----------|---|----------|
| 1        | 31834    | Shaft & Lever Assy., Throttle                       | 1        |
| 2        | 632016   | Spring, Throttle Return                             | 1        |
| 3        | 631036   | Shutter, Throttle                                   | 1        |
| 4        | 650506   | Screw   | 2        |
| 5        | 630766   | Spring, Idle Regulating Screw                       | 2        |
| 6        | 650417   | Screw, Idle Regulating                              | 1        |
| 7        | 631913   | Shaft & Lever Assy., Choke                          | 1        |
| 8        | 630739   | Washer, Flat  | 1        |
| 9        | 631815   | Shutter, Choke                                      | 1        |
| 10       | *630748  | Plug, Welch   | 1        |
| 11       | *631027  | Plug, Welch   | 1        |
| 12       | *631021  | Inlet Needle, Seat & Clip Assy.<br>(Incl. Ref. #13) | 1        |
| 13       | 631022   | Clip, Inlet Needle                                  | 1        |

| Ref. No. | Part No. | Description  | No. Used |
|----------|----------|--|----------|
| 14       | 632019   | Float, Carburetor  | 1        |
| 15       | *631024  | Shaft, Float   | 1        |
| 16       | 631867   | Bowl, Float  | 1        |
| 21       | 27110    | Gasket, Bowl-to-Body   | 1        |
| 22       | *31839   | Adjustment Screw Assy., Main<br>(Incl. Ref. #8, 21, 23 & 30) | 1        |
| 23       | *630740  | "O" Ring, Adjustment Screw                                   | 2        |
| 24       | *631078  | Screw, Idle Adjustment                                       | 1        |
| 25       | *631028  | Gasket, Bowl-to-Body   | 1        |
| 26       | 631803   | Fitting, Fuel Inlet  | 1        |
| 30       | 630738   | Spring, Main Adjustment Screw                                | 1        |
| 31       | 630735   | Spring, Choke Stop   | 1        |
| 32       | 31840    | Repair Kit (Incl. Items<br>Marked *)                         | 1        |



**REWIND STARTER NO. 590473**  
**(5 AND 7 H.P. SNOWTHROWER MODEL NOS. 38040 AND 38050)**

| Ref. No. | Part No. | Description              | No. Used |
|----------|----------|--------------------------|----------|
| 1        | 590409A  | Screw                    | 1        |
| 2        | 590474   | Cam, Dog                 | 1        |
| 3        | 590411   | Spring, Brake            | 1        |
| 4        | 590148   | Dog, Starter             | 1        |
| 5        | 590475   | Spring, Dog              | 1        |
| 6        | 590478   | Pulley                   | 1        |
| 7        | 590414   | Spring & Keeper Assembly | 1        |

| Ref. No. | Part No. | Description                                  | No. Used |
|----------|----------|--|----------|
| 8        | 590415   | Housing Assembly, Starter<br>(Incl. Ref. #1) | 1        |
| 9        | 590451A  | Rope, Starter                                | 1        |
| 10       | 590387   | Handle Assy., Starter                        | 1        |
| 11       | 590459   | Pin, Centering                               | 1        |
| 12       | 590476   | Retaining, Dog                               | 1        |
| 13       | 590477   | Screw  | 1        |

# IDENTIFICATION AND ORDERING

## MODEL AND SERIAL NUMBERS

The Snowthrower has two identification numbers: a model number and a serial number. The two numbers are stamped on a decal which is located on back of engine mounting plate. In any correspondence concerning the Snowthrower, supply model and serial numbers to assure that correct information and replacement parts are obtained.

To order replacement parts from an Authorized TORO Service Dealer, supply the following information:

1. Model and serial numbers of the Snowthrower.
2. Part number, description, and quantity of part(s) desired.

**Note:** Do not order by reference number if a parts catalog is being used; use the PART NUMBER.

## The Toro Promise

### A ONE YEAR LIMITED WARRANTY

*The Toro Company promises to repair any TORO Product if defective in materials or workmanship. The following time periods from the date of purchase apply:*

|  |         |
|--|---------|
| Residential Product . . . . .                    | 1 Year  |
| Residential Products Used Commercially . . . . . | 45 Days |

*The costs of parts and labor are included, but the customer pays the transportation costs. Just return any residential product to an Authorized TORO Service Dealer or TORO Distributor.*

Should you feel your TORO Product is defective and wish to rely on The Toro Promise, the following procedure is recommended:

1. Contact any Authorized TORO Service Dealer, TORO Master Service Dealer, or TORO Distributor (the Yellow Pages of your telephone directory is a good reference source).
2. He will either instruct you to return the product to him or recommend another Authorized TORO Service outlet which might be more convenient.
3. Bring the product along with your original sales slip, or other evidence of purchase date, to the service dealer.
4. The servicing dealer will inspect the unit, advise you whether the product is defective and, if so, make all repairs necessary to correct the defect without extra charge to you.

If for any reason you are dissatisfied with the dealer's analysis of the defect or the service performed, you may contact us.

Write:

TORO Consumer Service Department  
8111 Lyndale Avenue South  
Minneapolis, Minnesota 55420

The above remedy of product defects through repair by an Authorized TORO Service Dealer is the purchaser's sole remedy for any defect.

THERE IS NO OTHER EXPRESS WARRANTY. ALL IMPLIED WARRANTIES OF MERCHANTABILITY AND

FITNESS FOR USE ARE LIMITED TO THE DURATION OF THE EXPRESS WARRANTY.

Some states do not allow limitations on how long an implied warranty lasts, so the above limitation may not apply to you.

This warranty applies only to parts or components which are defective and does not cover repairs necessary due to normal wear, misuse, accidents, or lack of proper maintenance. Regular, routine maintenance of the unit to keep it in proper operating condition is the responsibility of the owner.

All warranty repairs reimbursable under The Toro Promise must be performed by an Authorized TORO Service Dealer using Toro approved replacement parts.

Repairs or attempted repairs by anyone other than an Authorized TORO Service Account are not reimbursable under The Toro Promise. In addition, these unauthorized repair attempts may result in additional malfunctions, the correction of which is not covered by warranty.

THE TORO COMPANY IS NOT LIABLE FOR INDIRECT, INCIDENTAL OR CONSEQUENTIAL DAMAGES IN CONNECTION WITH THE USE OF THE PRODUCT INCLUDING ANY COST OR EXPENSE OF PROVIDING SUBSTITUTE EQUIPMENT OR SERVICE DURING PERIODS OF MALFUNCTION OR NON-USE.

Some states do not allow the exclusion or limitation of incidental or consequential damages, so the above limitation or exclusion may not apply to you.

This warranty gives you specific legal rights, and you may also have other rights which vary from state to state.

## COUNTRIES OTHER THAN THE UNITED STATES OR CANADA

Customers who have purchased TORO products exported from the United States or Canada should contact their TORO Distributor (Dealer) to obtain guarantee policies for your country, province or state. If for any reason you are dissatisfied with your Distributor's service or have difficulty obtaining guarantee information, contact

the TORO importer. If all other remedies fail, you may contact us at The Toro Company.

International Group  
Service Department  
One Corporate Center  
7401 Metro Boulevard  
Minneapolis, Minnesota 55435 U.S.A.



# MAINTENANCE RECORD

| Date | Hours Used | Oil Change | Lubrication | Summer Storage | Fall Service | Spark Plug Gap |
|------|------------|------------|-------------|----------------|--------------|----------------|
|      |            |            |             |                |              |                |
|      |            |            |             |                |              |                |
|      |            |            |             |                |              |                |
|      |            |            |             |                |              |                |
|      |            |            |             |                |              |                |
|      |            |            |             |                |              |                |
|      |            |            |             |                |              |                |
|      |            |            |             |                |              |                |
|      |            |            |             |                |              |                |
|      |            |            |             |                |              |                |
|      |            |            |             |                |              |                |
|      |            |            |             |                |              |                |
|      |            |            |             |                |              |                |
|      |            |            |             |                |              |                |
|      |            |            |             |                |              |                |
|      |            |            |             |                |              |                |
|      |            |            |             |                |              |                |
|      |            |            |             |                |              |                |
|      |            |            |             |                |              |                |
|      |            |            |             |                |              |                |
|      |            |            |             |                |              |                |
|      |            |            |             |                |              |                |
|      |            |            |             |                |              |                |
|      |            |            |             |                |              |                |

# MAINTENANCE RECORD

| Date | Hours Used | Oil Change | Lubrication | Summer Storage | Fall Service | Spark Plug Gap |
|------|------------|------------|-------------|----------------|--------------|----------------|
|      |            |            |             |                |              |                |
|      |            |            |             |                |              |                |
|      |            |            |             |                |              |                |
|      |            |            |             |                |              |                |
|      |            |            |             |                |              |                |
|      |            |            |             |                |              |                |
|      |            |            |             |                |              |                |
|      |            |            |             |                |              |                |
|      |            |            |             |                |              |                |
|      |            |            |             |                |              |                |
|      |            |            |             |                |              |                |
|      |            |            |             |                |              |                |
|      |            |            |             |                |              |                |
|      |            |            |             |                |              |                |
|      |            |            |             |                |              |                |
|      |            |            |             |                |              |                |
|      |            |            |             |                |              |                |
|      |            |            |             |                |              |                |
|      |            |            |             |                |              |                |
|      |            |            |             |                |              |                |
|      |            |            |             |                |              |                |
|      |            |            |             |                |              |                |
|      |            |            |             |                |              |                |
|      |            |            |             |                |              |                |
|      |            |            |             |                |              |                |

# MAINTENANCE RECORD

| Date | Hours Used | Oil Change | Lubrication | Summer Storage | Fall Service | Spark Plug Gap |
|------|------------|------------|-------------|----------------|--------------|----------------|
|      |            |            |             |                |              |                |
|      |            |            |             |                |              |                |
|      |            |            |             |                |              |                |
|      |            |            |             |                |              |                |
|      |            |            |             |                |              |                |
|      |            |            |             |                |              |                |
|      |            |            |             |                |              |                |
|      |            |            |             |                |              |                |
|      |            |            |             |                |              |                |
|      |            |            |             |                |              |                |
|      |            |            |             |                |              |                |
|      |            |            |             |                |              |                |
|      |            |            |             |                |              |                |
|      |            |            |             |                |              |                |
|      |            |            |             |                |              |                |
|      |            |            |             |                |              |                |
|      |            |            |             |                |              |                |
|      |            |            |             |                |              |                |
|      |            |            |             |                |              |                |
|      |            |            |             |                |              |                |
|      |            |            |             |                |              |                |
|      |            |            |             |                |              |                |
|      |            |            |             |                |              |                |
|      |            |            |             |                |              |                |
|      |            |            |             |                |              |                |
|      |            |            |             |                |              |                |