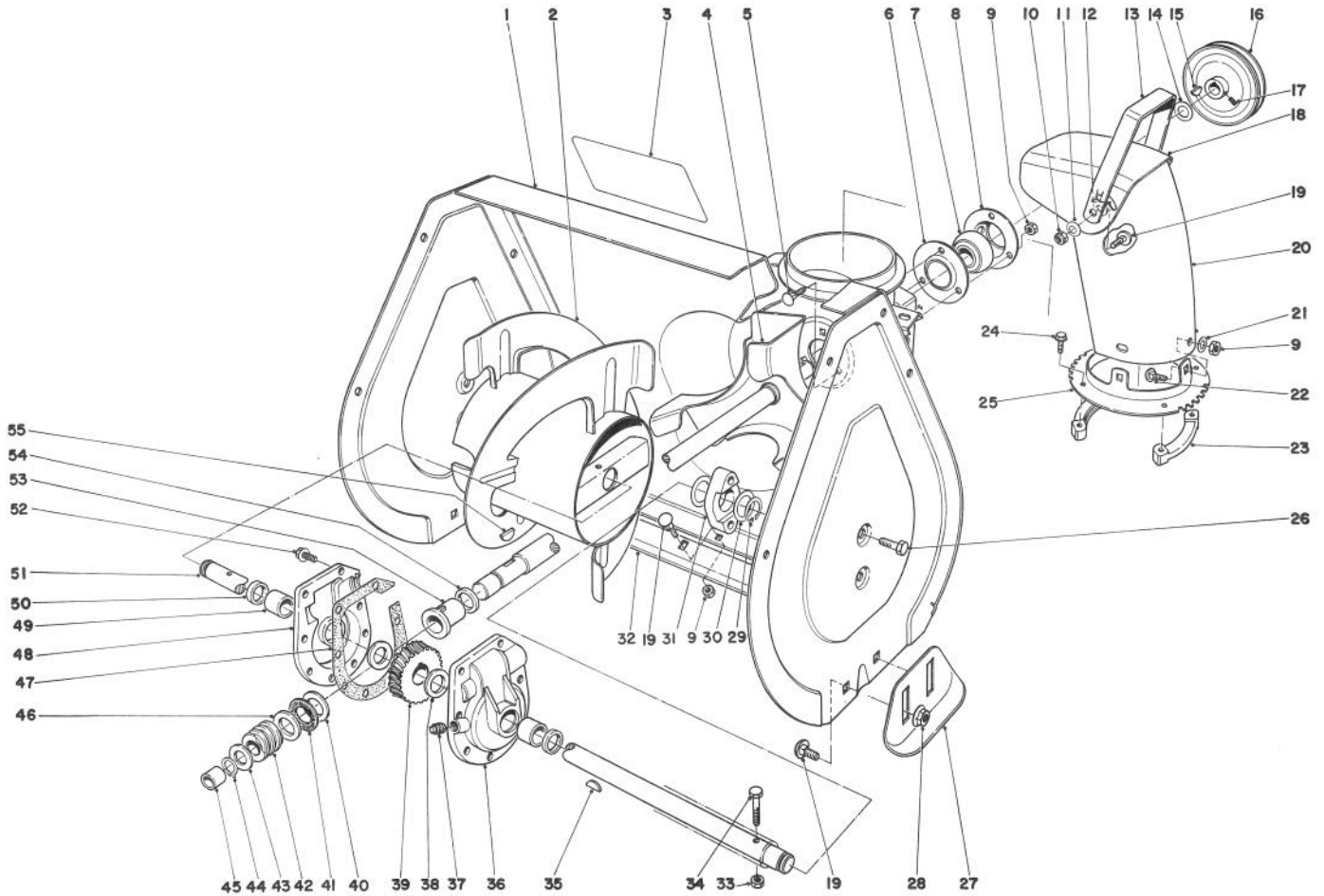




MODEL NO. 38052-4000001 & UP

PARTS CATALOG

521 SNOWTHROWER



AUGER ASSEMBLY

| Ref. No. | Part No. | Description | No. Used |
|----------|----------|-----------------------|----------|
| 1 | 43-7320 | Auger Housing | 1 |
| 2 | 39-1180 | Auger R.H. | 1 |
| * | 39-1190 | Auger L.H. | 1 |
| 3 | 29-6350 | Decal — Auger Warning | 1 |
| 4 | 37-6990 | Shaft & Impeller | 1 |
| 5 | 3230-10 | Carriage Bolt | 3 |
| 6 | 26-6110 | Bearing Flange Front | 1 |
| 7 | 26-6100 | Ball Bearing | 1 |
| 8 | 26-6120 | Bearing Flange Rear | 1 |
| 9 | 3296-29 | Locknut | 11 |
| 10 | 32152-1 | Locknut | 2 |
| 11 | 3290-340 | Washer Belleville | 2 |
| 12 | 20-4320 | Washer Rubber | 2 |
| 13 | 37-8930 | Handle Deflector | 1 |
| 14 | 3-0737 | Washer | 1 |

| Ref. No. | Part No. | Description | No. Used |
|----------|----------|-----------------------|----------|
| 15 | 3257-5 | Key | 1 |
| 16 | 37-6890 | Pulley | 1 |
| 17 | 3242-4 | Set Screw | 2 |
| 18 | 37-8920 | Deflector | 1 |
| 19 | 3230-1 | Carriage Bolt | 1 |
| 20 | 37-8910 | Chute — Discharge | 1 |
| 21 | 3256-23 | Washer | 3 |
| 22 | 3230-18 | Carriage Bolt | 3 |
| 23 | 37-6490 | Retainer — Chute Ring | 3 |
| 24 | 27-0220 | Self Tapping Screw | 6 |
| 25 | 37-8940 | Chute Ring | 1 |
| 26 | 32144-11 | Self Tapping Screw | 4 |
| 27 | 40-8160 | Skid | 2 |
| 28 | 32128-20 | Flange Nut | 4 |
| 29 | 32151-36 | Snap Ring | 2 |

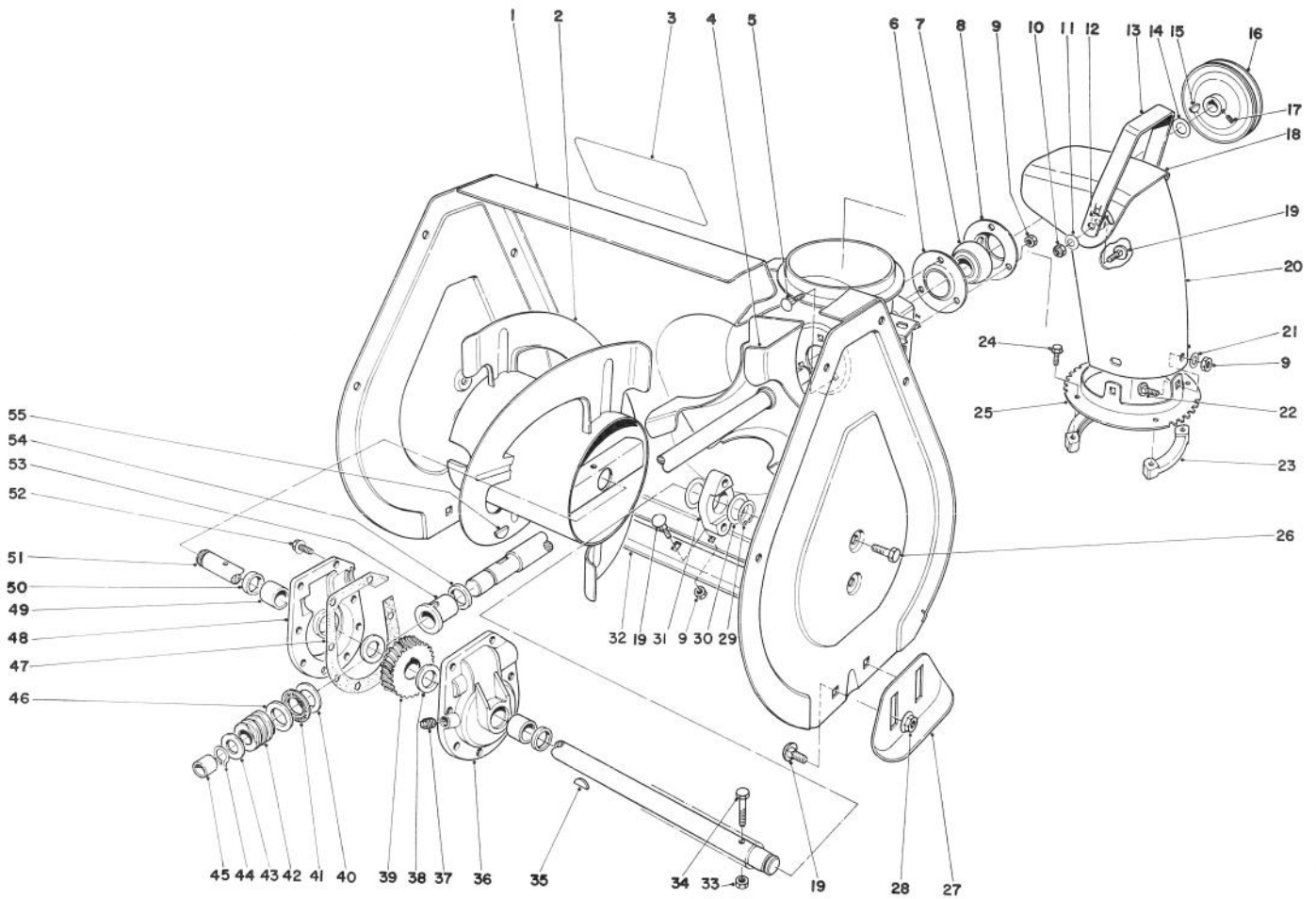
*Not Illustrated

COPYRIGHT © ALL RIGHTS RESERVED

The Toro Company — 1983

MINNEAPOLIS, MN 55420 — U.S.A.

PRICE \$1.00

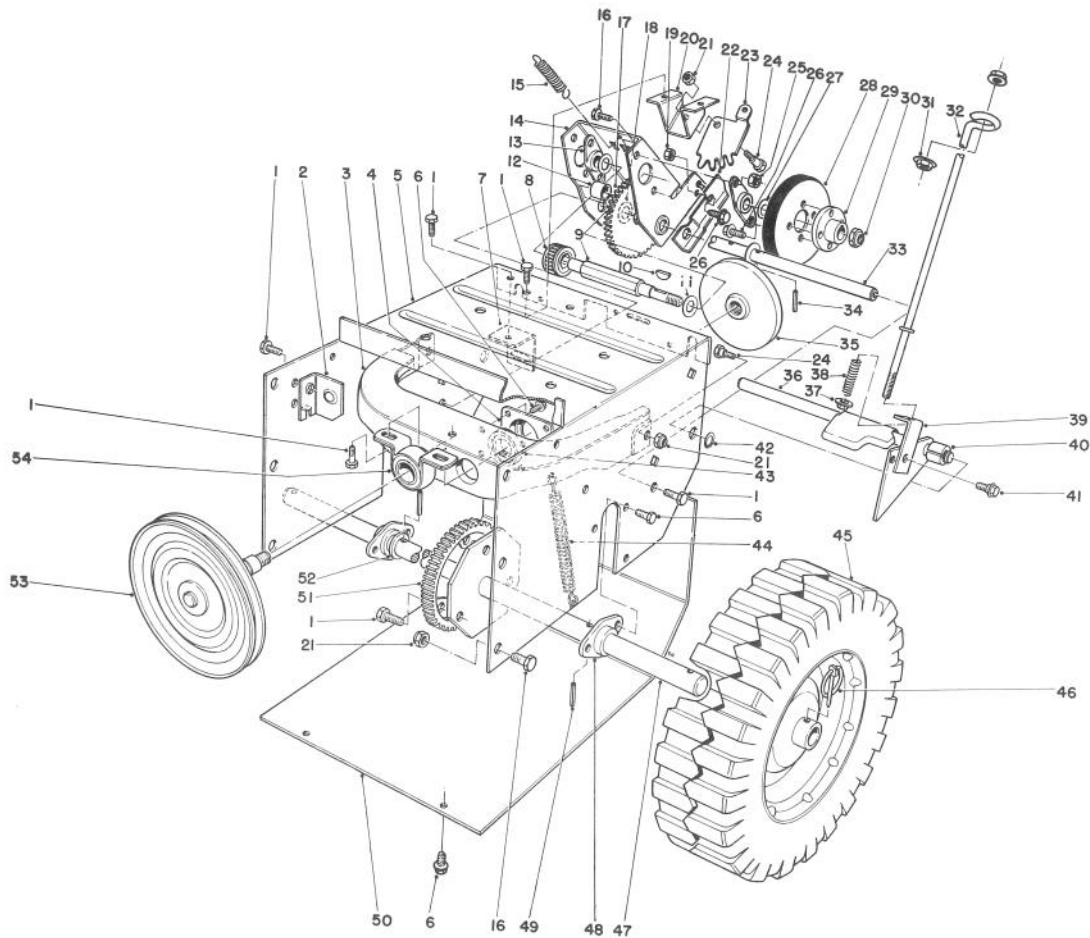


AUGER ASSEMBLY (Continued)

| Ref. No. | Part No. | Description | No. Used |
|----------|----------|---|----------|
| 30 | 5-1550 | Thrust Washer | 4 |
| 31 | 37-6550 | Auger Bearing | 2 |
| 32 | 39-1550 | Scraper Blade | 1 |
| 33 | 32152-4 | Locknut | 2 |
| 34 | 321-10 | Capscrew | 2 |
| 35 | 3257-33 | Woodruff Key | 1 |
| 36 | 37-8860 | Gear Case L.H. (Incl. Ref. #49 & 50) | 1 |
| 37 | 281-1 | Pipe Plug | 1 |
| 38 | 252-71 | Thrust Bearing | 2 |
| 39 | 23-9050 | Gear | 1 |
| 40 | 257-3 | Thrust Washer | 1 |
| 41 | 252-76 | Needle Thrust Bearing | 1 |
| 42 | 5-7170 | Worm | 1 |
| 43 | 3-8664 | Washer | 1 |

| Ref. No. | Part No. | Description | No. Used |
|----------|----------|---|----------|
| 44 | 32120-72 | Retaining Ring | 1 |
| 45 | 256-32 | Bushing | 1 |
| 46 | 252-80 | Thrust Washer | 1 |
| 47 | 40-8330 | Gasket | 1 |
| 48 | 37-8850 | Gear Case R.H. (Incl. Ref. #49 & 50) | 1 |
| 49 | 256-237 | Bushing | 2 |
| 50 | 7-0045 | Oil Seal | 2 |
| 51 | 37-6800 | Shaft — Auger | 1 |
| 52 | 32144-41 | Self Tapping Screw | 8 |
| 53 | 37-6560 | Bushing — Input | 1 |
| 54 | 237-87 | Seal | 1 |
| 55 | 3257-23 | Key — Woodruff | 1 |
| * | 37-6960 | Gear Case Assy. Complete | 1 |

*Not Illustrated

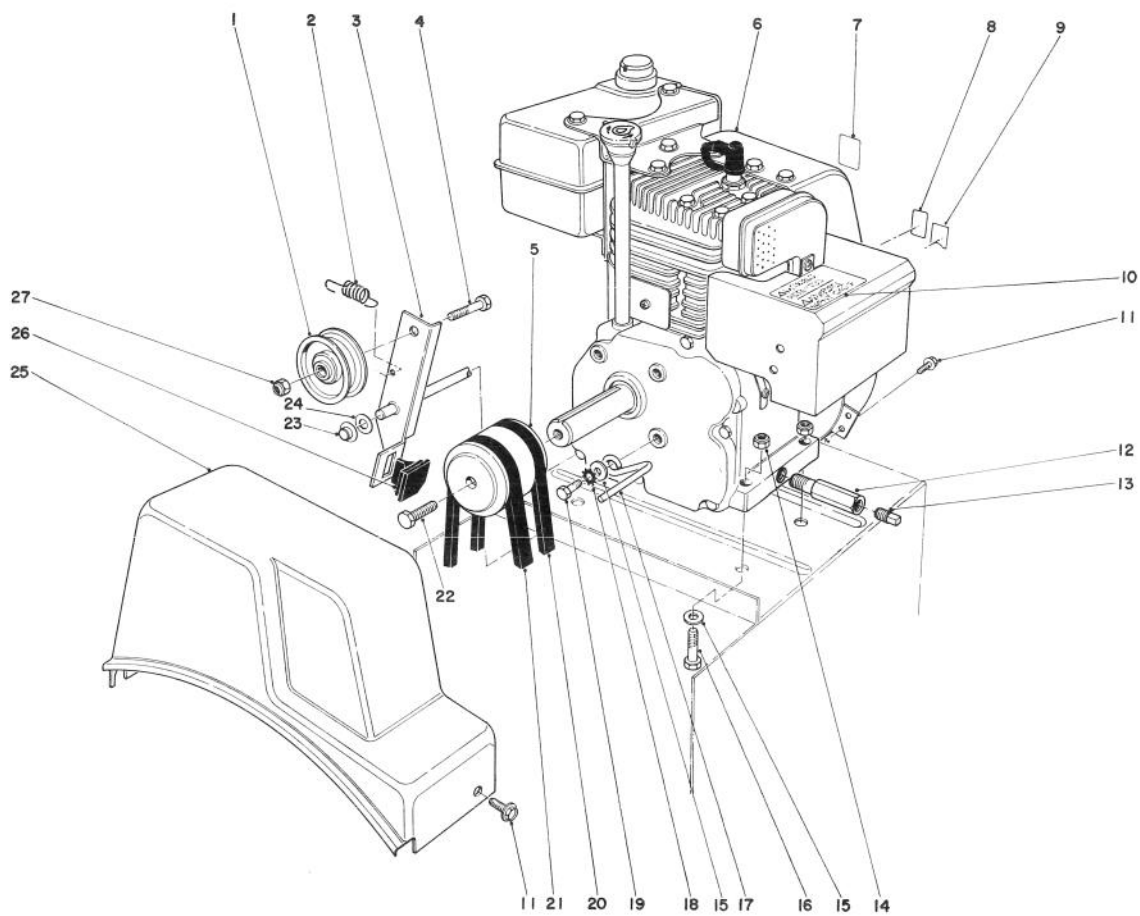


TRACTION ASSEMBLY

| Ref. No. | Part No. | Description | No. Used |
|----------|----------|--|----------|
| 1 | 32144-11 | Hex Self Tapping Screw | 12 |
| 2 | 37-9060 | Mount — Clutch Rod Front | 1 |
| 3 | 37-6740 | Friction Plate Frame | 1 |
| 4 | 37-6730 | Cup — Bearing | 1 |
| 5 | 37-8900 | Traction Frame | 1 |
| 6 | 12-3270 | Hex Tapping Screw | 12 |
| 7 | 37-9070 | Mount — Clutch Rod Rear | 1 |
| 8 | 37-6500 | Sliding Gear | 1 |
| 9 | 37-6780 | Hex Shaft | 1 |
| 10 | 3257-24 | Key | 1 |
| 11 | 5-7570 | Thrust Washer | 2 |
| 12 | 256-86 | Bushing | 1 |
| 13 | 20-1620 | Bearing — Friction Wheel | 2 |
| 14 | 39-1230 | Bracket — Sliding | 1 |
| 15 | 37-8880 | Spring — Traction Disengage | 1 |
| 16 | 322-2 | Capscrew | 10 |
| 17 | 37-9160 | Intermediate Gear & Bushing (Incl. Ref. #12) | 1 |
| 18 | 10-9280 | Thrust Washer | 2 |
| 19 | 3296-16 | Locknut | 1 |
| 20 | 37-8790 | Mount — Quadrant Gear | 1 |
| 21 | 3296-29 | Locknut | 9 |
| 22 | 39-1250 | Cam Receiver | 1 |
| 23 | 37-8800 | Quadrant Gear | 1 |
| 24 | 37-8770 | Shoulder Bolt | 3 |
| 25 | 32152-1 | Locknut | 4 |
| 26 | 11-9760 | Self Tapping Screw | 5 |
| 27 | 36-4790 | Thrust Washer | 1 |
| 28 | 37-6570 | Friction Wheel | 1 |

| Ref. No. | Part No. | Description | No. Used |
|----------|----------|-------------------------------|----------|
| 29 | 39-1520 | Hub — Friction Wheel Mount | 1 |
| 30 | 3296-48 | Locknut | 1 |
| 31 | 32128-33 | Flange Locknut | 2 |
| 32 | 39-3060 | Lower Traction Rod | 1 |
| 33 | 37-6760 | Shaft — Pivot | 1 |
| 34 | 32121-45 | Roll Pin | 2 |
| 35 | 38-0800 | Friction Plate | 1 |
| 36 | 43-7310 | Traction Engagement Assy. | 1 |
| 37 | 32128-10 | Flange Locknut | 1 |
| 38 | 38-4520 | Spring — Compression | 1 |
| 39 | 38-4490 | Bracket — Traction | 1 |
| 40 | 40-9680 | Spacer | 1 |
| 41 | 40-8350 | Shoulder Screw | 1 |
| 42 | 32151-61 | Retaining Ring | 1 |
| 43 | 38-7820 | Bearing | 1 |
| 44 | 37-8870 | Spring — Friction Plate Frame | 1 |
| 45 | 38-1400 | Wheel Assembly | 2 |
| 46 | 3290-243 | Pin — Klik | 2 |
| 47 | 37-6970 | Axle Shaft | 1 |
| 48 | 37-6850 | Axle Bearing | 2 |
| 49 | 32121-31 | Roll Pin | 2 |
| 50 | 37-6830 | Bottom Cover | 1 |
| 51 | 37-6520 | Axle Gear | 1 |
| 52 | 3-8664 | Thrust Washer | 2 |
| 53 | 40-8190 | Pulley & Shaft | 1 |
| 54 | 38-4470 | Bushing Assembly | 1 |
| * | 37-7010 | Tire Chain Kit (Optional) | 1 |
| * | 11-5529 | Loose Parts | 1 |

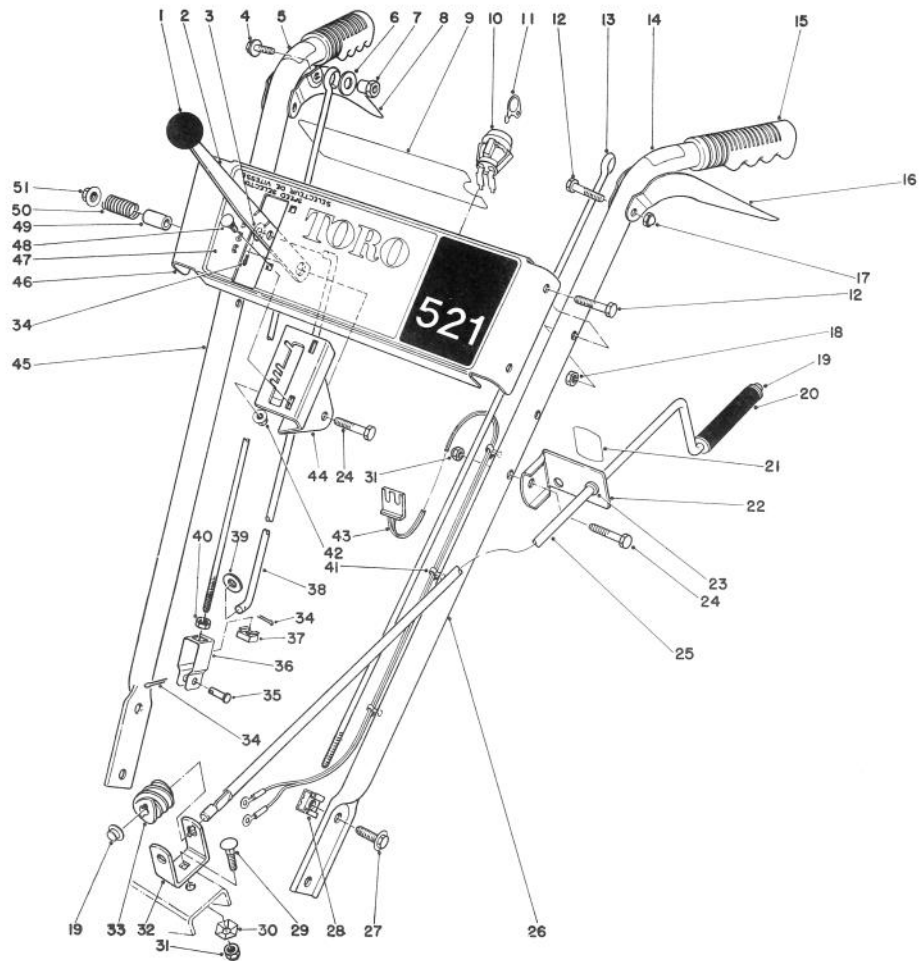
*Not Illustrated



ENGINE ASSEMBLY

| Ref. No. | Part No. | Description | No. Used |
|----------|----------|----------------------------------|----------|
| 1 | 3-4244 | Idler Pulley | 1 |
| 2 | 10-3890 | Spring — Auger Disengage | 1 |
| 3 | 8-8649 | Auger Clutch (Incl. Ref. #26) | 1 |
| 4 | 323-29 | Capscrew | 1 |
| 5 | 43-7370 | Engine Pulley | 1 |
| 6 | 221-753 | Engine | 1 |
| 7 | 39-3860 | Decal — Primer | 1 |
| 8 | 37-8890 | Decal — Throttle | 1 |
| 9 | 39-3850 | Decal — Choke | 1 |
| 10 | 29-6390 | Decal — Hot Surface Warning | 1 |
| 11 | 12-3270 | Self Tapping Screw | 3 |
| 12 | 49-3040 | Drain Tube | 1 |
| 13 | 281-7 | Pipe Plug | 1 |

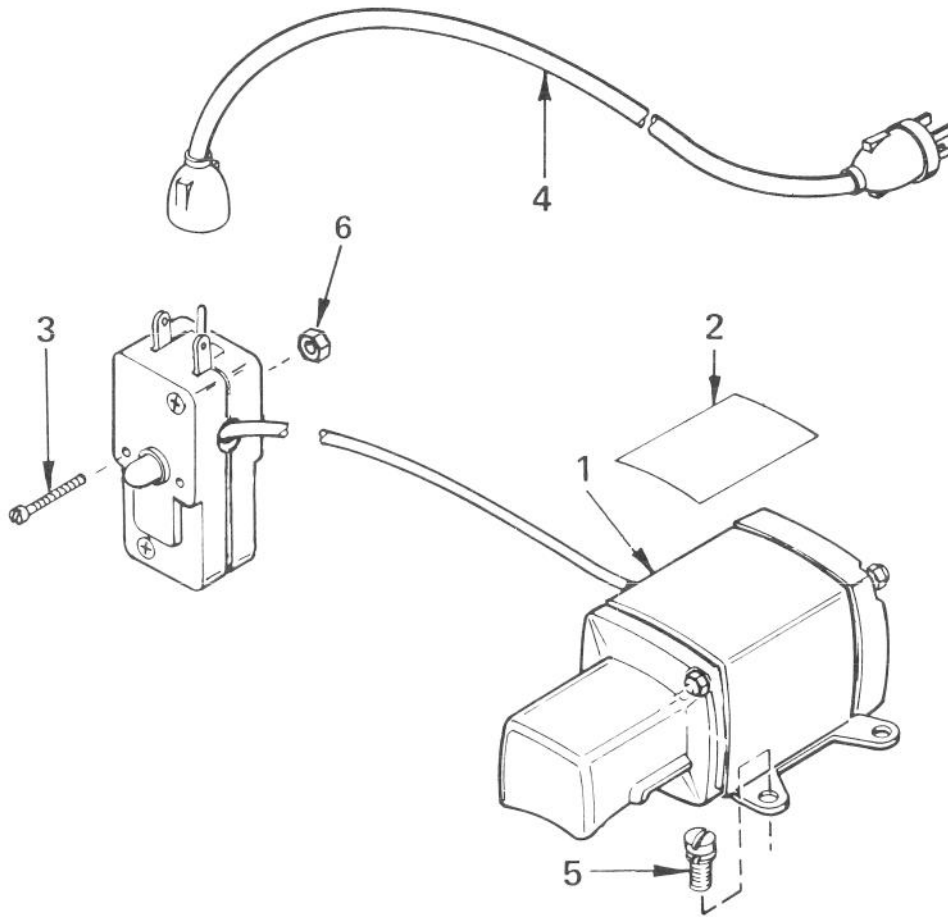
| Ref. No. | Part No. | Description | No. Used |
|----------|----------|-----------------------------|----------|
| 14 | 3296-29 | Locknut | 4 |
| 15 | 3256-23 | Flat Washer | 5 |
| 16 | 322-7 | Capscrew | 4 |
| 17 | 37-8990 | Belt Retainer | 1 |
| 18 | 3255-8 | Lockwasher — External Tooth | 1 |
| 19 | 3210-3 | Capscrew | 1 |
| 20 | 37-9090 | V-Belt — Traction | 1 |
| 21 | 37-9080 | V-Belt — Auger | 1 |
| 22 | 43-7290 | Screw — Special | 1 |
| 23 | 3290-320 | Nut — Push On | 1 |
| 24 | 3256-24 | Flat Washer | 1 |
| 25 | 37-6900 | Belt Cover | 1 |
| 26 | 40-8140 | Molded Brake Assy. | 1 |
| 27 | 32152-2 | Locknut | 1 |



HANDLE ASSEMBLY

| Ref. No. | Part No. | Description | No. Used |
|----------|----------|--|----------|
| 1 | 233-21 | Knob | 1 |
| 2 | 37-8820 | Speed Selector | 1 |
| 3 | 3256-2 | Washer | 1 |
| 4 | 3234-13 | Hex Flange Capscrew | 2 |
| 5 | 39-1130 | Decal — Auger Drive | 1 |
| 6 | 3256-24 | Washer | 2 |
| 7 | 47-4990 | Post — Linkage Mounting | 2 |
| 8 | 47-4970 | Lever — Auger Control | 1 |
| 9 | 37-9140 | Decal — Escutcheon Back | 1 |
| 10 | 40-5940 | On — Off Switch | 1 |
| 11 | 33-2010 | Key — Ignition | 2 |
| 12 | 321-37 | Capscrew | 6 |
| 13 | 47-4980 | Upper Link | 2 |
| 14 | 39-1140 | Decal — Wheel Drive | 1 |
| 15 | 37-9110 | Grip | 2 |
| 16 | 47-4960 | Lever — Traction Control | 1 |
| 17 | 32111-7 | Cap Nut | 2 |
| 18 | 32152-4 | Locknut | 4 |
| 19 | 3290-320 | Push — On Speed Nut | 2 |
| 20 | 40-8230 | Grip | 1 |
| 21 | 29-6370 | Decal — Chute Direction | 1 |
| 22 | 6-3069 | Bracket — Chute Control Mounting (Incl. Ref. #21&23) | 1 |
| 23 | 256-249 | Nylinder | 1 |
| 24 | 322-7 | Capscrew | 2 |
| 25 | 40-8270 | Chute Control Rod | 1 |

| Ref. No. | Part No. | Description | No. Used |
|----------|----------|-------------------------|----------|
| 26 | 37-8720 | Handle — Left | 1 |
| 27 | 3234-14 | Flange Screw | 4 |
| 28 | 3290-196 | Retained Nut | 4 |
| 29 | 3230-2 | Carriage Bolt | 1 |
| 30 | 3290-238 | Pyramidal Washer | 1 |
| 31 | 3296-29 | Locknut | 2 |
| 32 | 40-8280 | Bracket — Chute Worm | 1 |
| 33 | 40-8250 | Worm Gear | 1 |
| 34 | 3274-4 | Cotter Pin | 3 |
| 35 | 283-3 | Clevis Pin | 1 |
| 36 | 39-3080 | Clevis | 1 |
| 37 | 32115-5 | Retained Nut | 1 |
| 38 | 39-7570 | Rod — Speed Selector | 1 |
| 39 | 3256-23 | Washer | 1 |
| 40 | 3218-1 | Jam Nut | 1 |
| 41 | 17-9120 | Wire Mount | 3 |
| 42 | 32128-32 | Flange Locknut | 2 |
| 43 | 43-7390 | Wire Harness | 1 |
| 44 | 39-1280 | Mount — Speed Selector | 1 |
| 45 | 37-8710 | Handle — Right | 1 |
| 46 | 43-7360 | Panel — Escutcheon | 1 |
| 47 | 49-2380 | Decal — Escutcheon | 1 |
| 48 | 3229-22 | Carriage Bolt | 2 |
| 49 | 40-8130 | Spacer — Speed Selector | 1 |
| 50 | 37-9150 | Spring | 1 |
| 51 | 32128-13 | Flange Locknut | 1 |

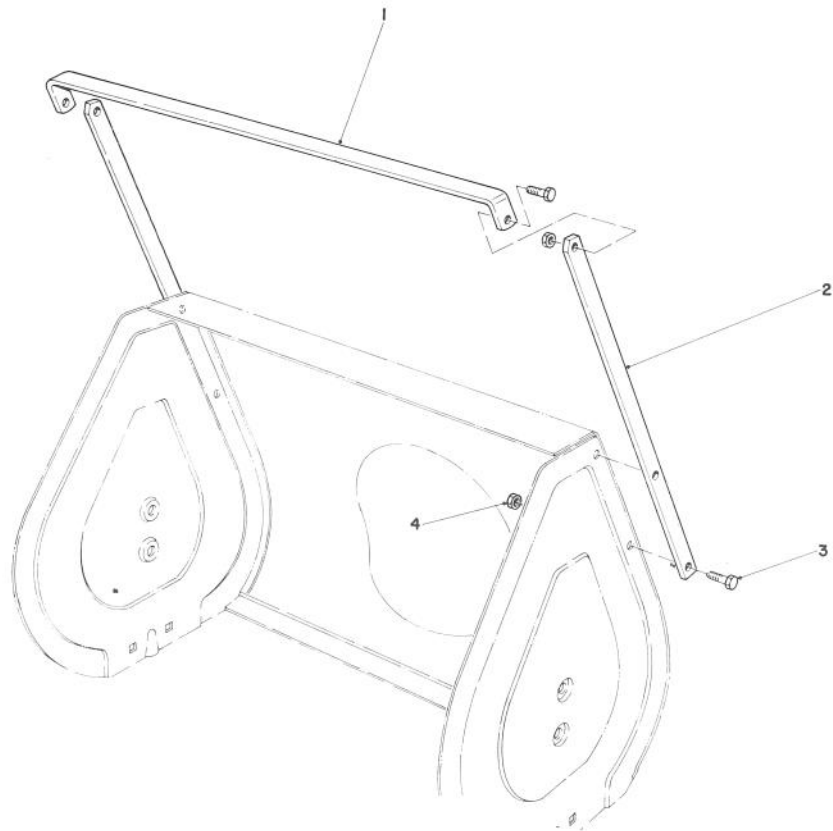


STARTER MOTOR KIT MODEL 23-3790

| Ref. No. | Part No. | Description | No. Used |
|----------|----------|--|----------|
| 1† | 33517A | Motor, Cranking (CSA Approved) (Incl. #2 thru 6) | 1 |
| 2† | 34161 | Decal | 1 |
| 3† | 650741 | Screw, Hex Hd. Self Tap | 2 |

| Ref. No. | Part No. | Description | No. Used |
|----------|----------|-----------------------|----------|
| 4† | 32450A | Cord, Extension | 1 |
| 5† | 650759 | Screw, Hex Washer Hd. | 3 |
| 6† | 650742 | Nut & Lockwasher | 2 |

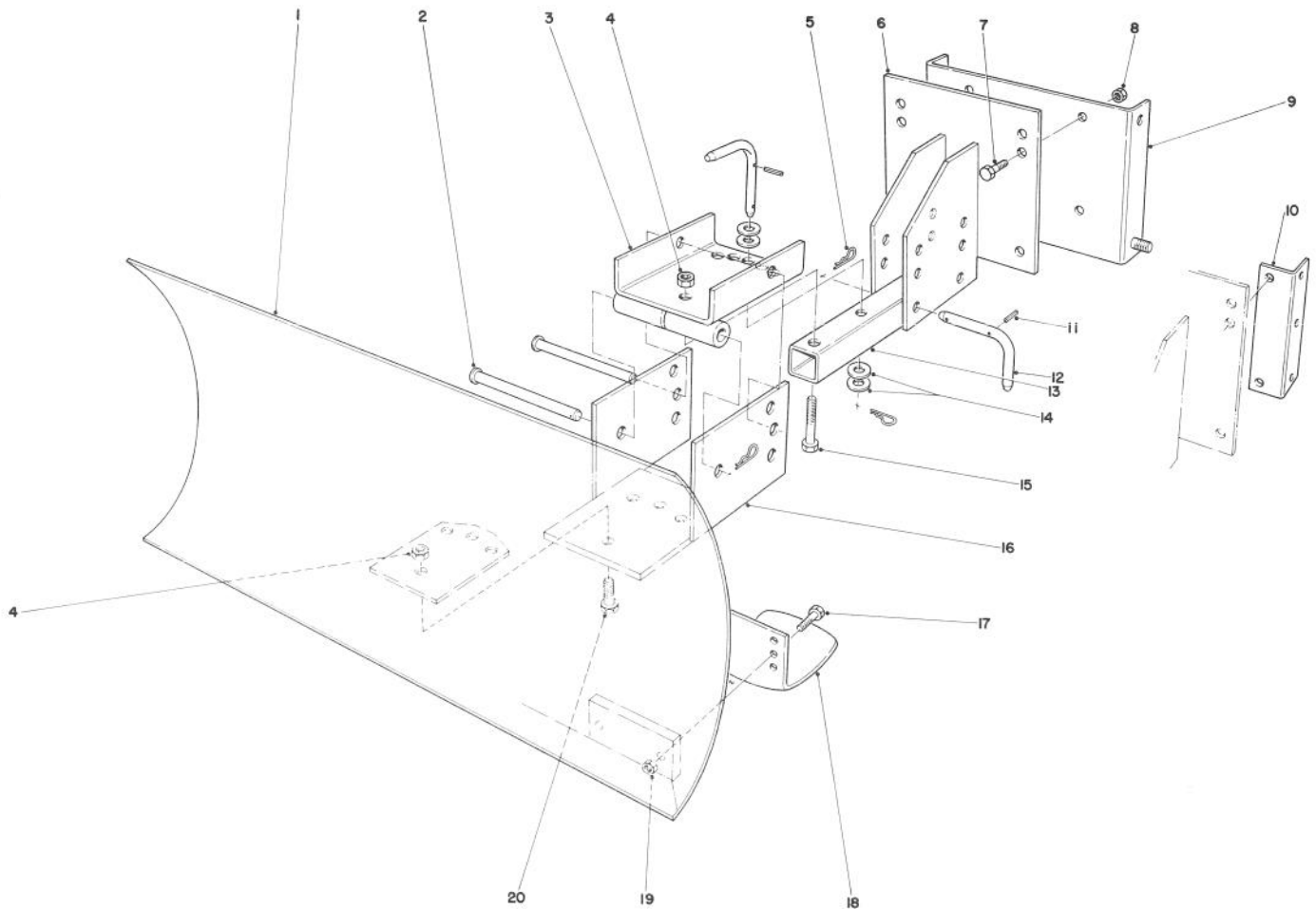
†Note: Obtain individual replacement parts from your local Tecumseh Dealer.



DRIFT BREAKER KIT NO. 37-7020 (Optional)

| Ref. No. | Part No. | Description | No. Used |
|----------|----------|----------------------|----------|
| 1 | 38-0760 | Drift Breaker — Top | 1 |
| 2 | 38-0750 | Drift Breaker — Side | 2 |

| Ref. No. | Part No. | Description | No. Used |
|----------|----------|-------------|----------|
| 3 | 322-4 | Capscrew | 6 |
| 4 | 3296-29 | Locknut | 6 |

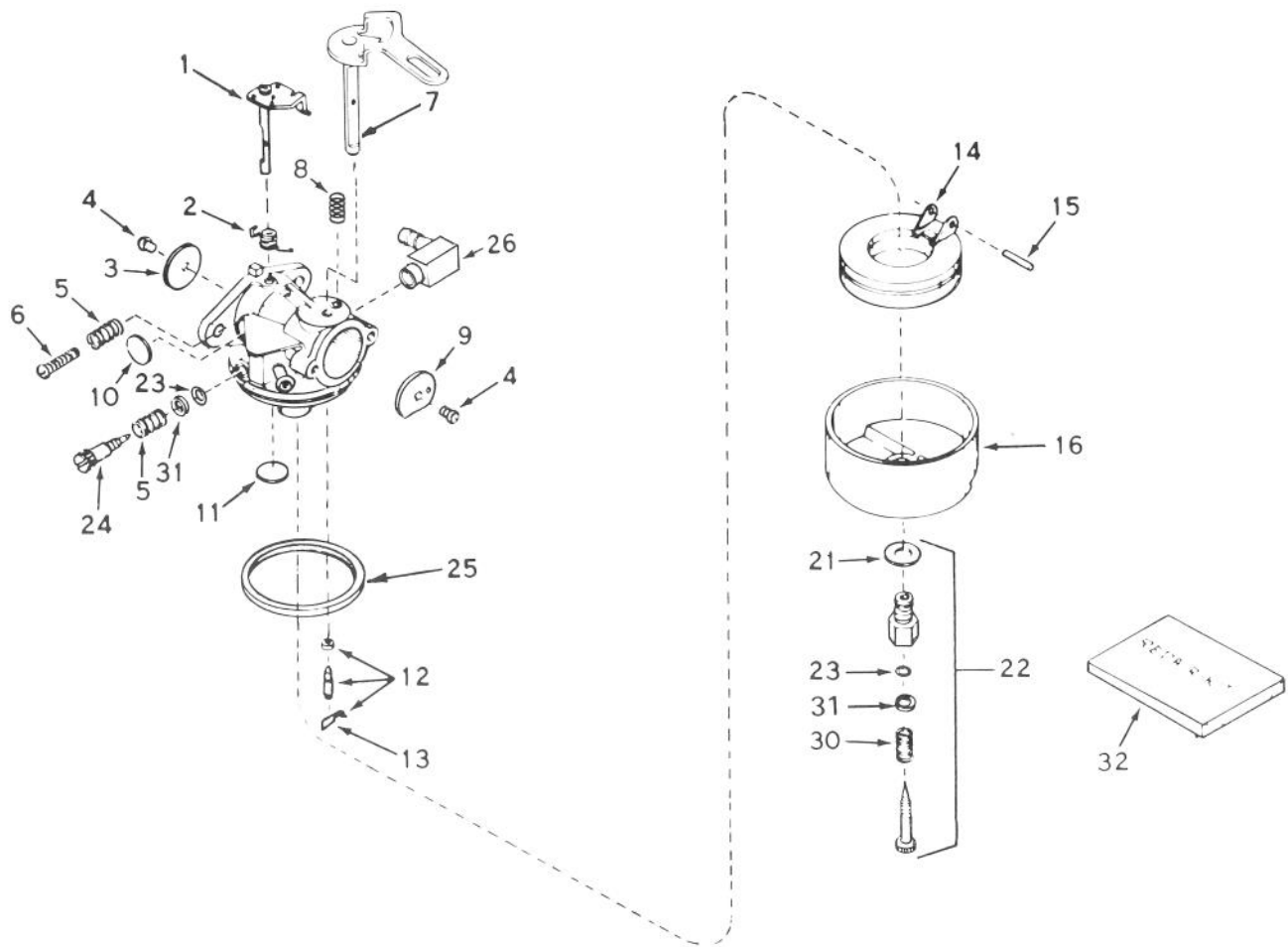


GRADER BLADE ASSEMBLY MODEL 59099 (Optional)

| Ref. No. | Part No. | Description | No. Used |
|----------|----------|--|----------|
| 1 | 7-4374 | Blade | 1 |
| 2 | 283-38 | Clevis Pin | 2 |
| 3 | 20-5090 | Swivel Bracket | 1 |
| 4 | 32152-3 | Locknut | 5 |
| 5 | 3290-322 | Hairpin Cotter | 5 |
| 6 | 20-5170 | Mounting Plate | 1 |
| 7 | 323-6 | Capscrew | 4 |
| 8 | 32152-2 | Locknut | 4 |
| 9 | 22-4920 | Mounting Plate Bracket (used with 826 and 1132 only) | 1 |
| 10 | 39-7850 | Mounting Rail (Used with 3521, 421 & 521 Units only) | 2 |

| Ref. No. | Part No. | Description | No. Used |
|----------|----------|----------------------------|----------|
| 11 | 32121-45 | Roll Pin | 3 |
| 12 | 20-5210 | Pivot Pin (Incl. Ref. #11) | 3 |
| 13 | 20-5140 | Tongue Blade | 1 |
| 14 | 3256-5 | Flat Washer | 4 |
| 15 | 325-11 | Capscrew | 1 |
| 16 | 20-5130 | Blade Adjustment | 1 |
| 17 | 322-6 | Capscrew | 4 |
| 18 | 7-1023 | Skid | 2 |
| 19 | 32152-1 | Locknut | 4 |
| 20 | 325-5 | Capscrew | 4 |
| * | 20-9950 | Air Cleaner Kit (Tecumseh) | 1 |

*Not Illustrated

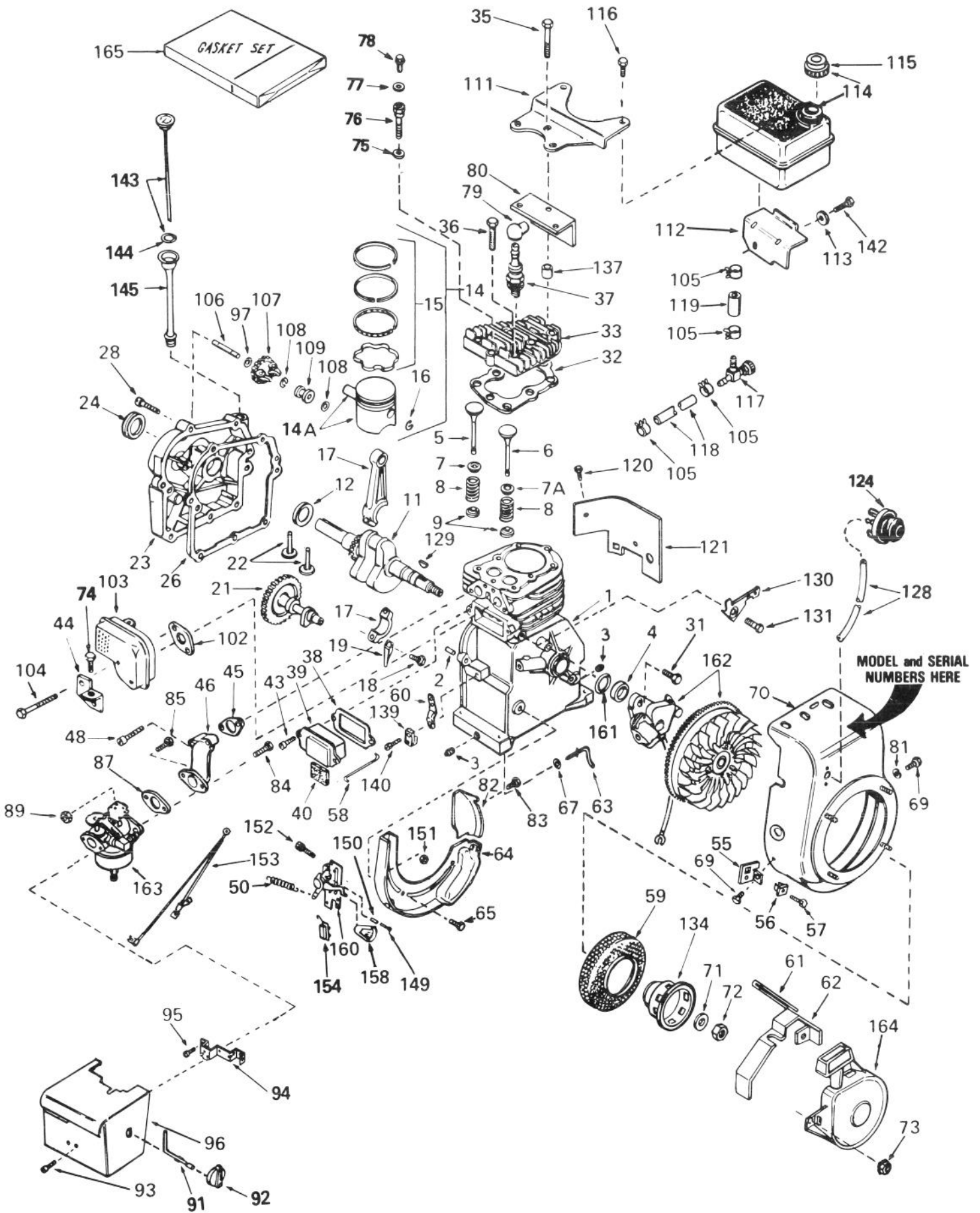


CARBURETOR NO. 632107

| Ref. No. | Part No. | Description | No. Used |
|----------|----------|--|----------|
| 1 | 631615 | Shaft & Lever Assy., Throttle | 1 |
| 2 | 632016 | Spring, Throttle return | 1 |
| 3 | 631036 | Shutter, Throttle | 1 |
| 4 | 650506 | Screw | 2 |
| 5 | 630766 | Spring, Idle regulating screw | 2 |
| 6 | 650417 | Screw, Idle regulating | 1 |
| 7 | 632108 | Shaft & Lever Assy., Choke | 1 |
| 8 | 630735 | Spring, Choke stop | 1 |
| 9 | 631815 | Shutter, Choke | 1 |
| 10 | *630748 | Plug, Welch | 1 |
| 11 | *631027 | Plug, Welch | 1 |
| 12 | *631021 | Inlet Needle, Seat & Clip Assy. (Incl. #13) | 1 |
| 13 | 631022 | Clip, Inlet needle | 1 |
| 14 | 632019 | Float, Carburetor | 1 |

| Ref. No. | Part No. | Description | No. Used |
|----------|----------|--|----------|
| 15 | *631024 | Shaft, Float | 1 |
| 16 | 631867 | Bowl, Float | 1 |
| 21 | 27110 | Gasket, Bowl-to-body | 1 |
| 22 | *31839 | Adjustment Screw Assy., Main (Incl. #21, 23, 30 & 31) | 1 |
| 23 | *630740 | "O" Ring, Adjustment screw | 2 |
| 24 | *631078 | Screw, Idle adjustment | 1 |
| 25 | *631028 | Gasket, Bowl-to-body | 1 |
| 26 | 631807 | Fitting, Fuel inlet | 1 |
| 30 | 630738 | Spring, Main adjustment screw | 1 |
| 31 | 630739 | Washer, Flat | 2 |
| 32 | 31840 | Repair Kit (Incl. items marked*) | 1 |

ENGINE TECUMSEH MODEL HS50-67223E



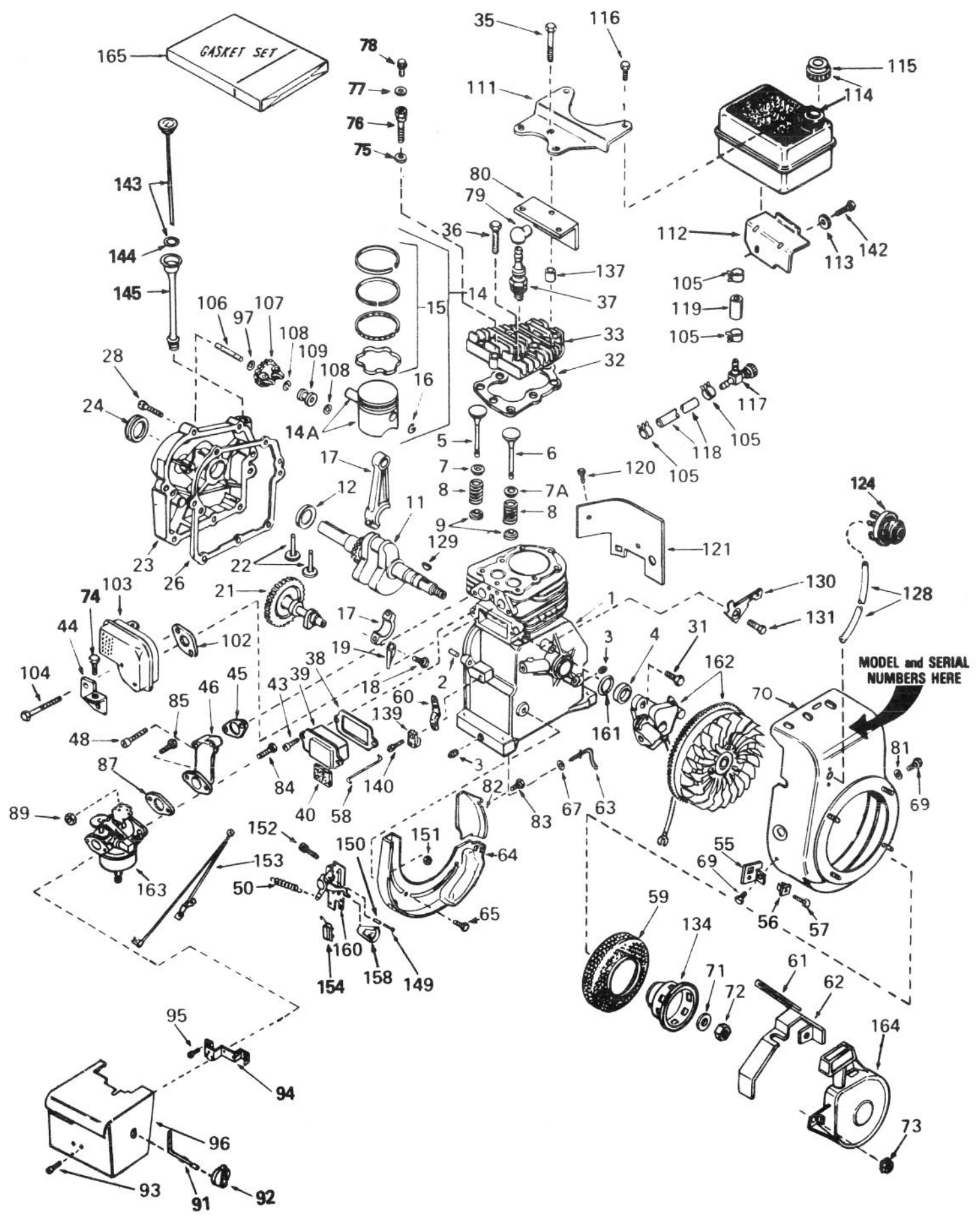
ENGINE TECUMSEH MODEL HS50-67223E

| Ref. No. | Part No. | Description | No. Used | Ref. No. | Part No. | Description | No. Used |
|----------|----------|---|----------|----------|----------|--|----------|
| 1 | 33674 | Cylinder Assy. (Incl. #2,3,&4) | 1 | 36 | 6021A | Screw, Hex Flange Hd. | 2 |
| 2 | 26727 | Pin, Dowel | 2 | 37 | 33636 | Plug, Spark (Champion J-8 or equivalent) | 1 |
| 3 | 27642 | Plug, Sq. Hd., (Oil Drain) | 2 | | | <i>Except for Canada</i> | |
| 4 | 32600 | Seal, Oil | 1 | 37 | 34251 | Resistor Spark Plug (Canadian regulations require RJ-17LM resistor spark plug) | 1 |
| 5 | 32644A | Valve, Intake, (Std.) (Incl. #9) | 1 | | | | |
| 5 | 32645A | Valve, Intake (1/32" oversize) (Incl. #9) | 1 | 38 | *31619 | Gasket, Breather | 1 |
| 6 | 29313C | Valve, Exhaust (Std.) (Incl. #9) | 1 | 39 | 31337 | Breather Assy. (Incl. #38&40) | 1 |
| 6 | 29315C | Valve, Exhaust (1/32" oversize) (Incl. #9) | 1 | 40 | 31410 | Element, Breather | 1 |
| 7 | 31671 | Cap, Upper valve spring (Intake) | 1 | 43 | 650128 | Screw, Fil. Hd. | 2 |
| 7A | 33678 | Cap, Upper valve spring (Exhaust) | 1 | 44 | 33333 | Bracket, Carburetor cover | 1 |
| 8 | 31672 | Spring, Valve | 2 | 45 | *33673 | Gasket, Intake | 1 |
| 9 | 31673 | Cap, Lower valve spring | 2 | 46 | 33691 | Pipe, Intake | 1 |
| 11 | 34740 | Crankshaft Assy. | 1 | 48 | 650664 | Screw, Fil. Hd. | 2 |
| 12 | 32323 | Washer, Thrust | 1 | 50 | 31426 | Spring, Extension | 1 |
| 14 | 34535 | Piston, Pin & Ring Assy. (Std.) (Incl. #14A,15&16) | 1 | 55 | 34126 | Bracket, Grommet mounting | 1 |
| 14 | 34536 | Piston, Pin & Ring Assy. (.010 oversize) (Incl. #14A,15&16) | 1 | 56 | 28545 | Grommet, Plastic | 1 |
| 14 | 34537 | Piston, Pin & Ring Assy. (.020 oversize) (Incl. #14A,15&16) | 1 | 57 | 650643 | Screw, Pan Hd. self-tap | 1 |
| 14A | 33562B | Piston & Pin Assy. (Std.) (Incl. #16) | 1 | 58 | 32698 | Link, Governor-to-throttle | 1 |
| 14A | 33563B | Piston & Pin Assy. (.010 oversize) (Incl. #16) | 1 | 59 | 33668 | Screen, Starter cup | 1 |
| 14A | 33564B | Piston & Pin Assy. (.020 oversize) (Incl. #16) | 1 | 60 | 31510 | Lever, Governor | 1 |
| 15 | 33567 | Ring Set, Piston (Std.) | 1 | 61 | 32576 | Seal, Snow guard | 1 |
| 15 | 33568 | Ring Set, Piston (.010 oversize) | 1 | 62 | 34127 | Guard, Starter | 1 |
| 15 | 33569 | Ring Set, Piston (.020 oversize) | 1 | 63 | 31334 | Rod, Governor | 1 |
| 16 | 20381 | Ring, Piston pin retaining | 2 | 64 | †33342 | Baffle, Blower housing | 1 |
| 17 | 33661 | Rod Assy., Connecting (Incl. #18&19) | 1 | 65 | 650561 | Screw, Hex washer Hd. | 2 |
| 18 | 32610A | Screw, Connecting rod | 2 | 67 | 28277 | Washer, Flat | 1 |
| 19 | 32654 | Dipper, Oil | 1 | 69 | 29212 | Screw, Hex Hd. | 2 |
| 21 | 33158 | Camshaft (Compression Release) | 1 | 70 | 34813 | Housing, Blower | 1 |
| 22 | 27241 | Lifter, Valve | 2 | 71 | 650815 | Washer, Belleville | 1 |
| 23 | 34674 | Cover, Cylinder (Incl. #24&106) | 1 | 72 | 650816 | Nut, Flywheel | 1 |
| 24 | 27897 | Seal, Oil | 1 | 73 | 29752 | Nut & Lockwasher | 4 |
| 26 | *27677 | Gasket, Cylinder cover | 1 | 74 | 650735 | Screw, Hex Hd. taptite | 1 |
| 28 | 650488 | Screw, Hex Hd. | 7 | 75 | 650691 | Washer, Flat | 1 |
| 31 | 650489 | Screw, Hex Hd. | 2 | 76 | 650818 | Screw, Special Hex Hd. | 1 |
| 32 | *33554 | Gasket, Cylinder head | 1 | 77 | 8345 | Washer, Flat | 1 |
| 33 | 33016 | Head, Cylinder | 1 | 78 | 30688 | Screw, Hex Hd. | 1 |
| 35 | 650694A | Screw, Hex flange Hd. | 5 | 79 | 610118 | Cover, Spark plug | 1 |
| | | | | 80 | 33344 | Baffle, Heat | 1 |
| | | | | 81 | 650168 | Washer, Flat | 1 |
| | | | | 82 | 33341 | Extension, Baffle | 1 |
| | | | | 83 | 650701 | Screw, Hex Washer Hd. shakeproof, self-drilling | 1 |
| | | | | 84 | 6202 | Screw, Hex Hd. | 1 |
| | | | | 85 | 650601 | Screw, Fil. Hd. | 1 |
| | | | | 87 | *26756 | Gasket, Carburetor | 1 |
| | | | | 89 | 29752 | Nut & Lockwasher | 2 |
| | | | | 91 | 34582 | Rod, Choke | 1 |
| | | | | 92 | 34585 | Knob, Control | 1 |
| | | | | 93 | 650257 | Screw, Pan Hd. | 2 |
| | | | | 94 | 34583 | Bracket, Choke | 1 |
| | | | | 95 | 28820 | Screw, Fil. Hd. | 2 |
| | | | | 96 | 34134 | Cover, Carburetor | 1 |

*Indicates parts included in Gasket Set, Ref. #165.

†In original production, the speed control assembly is riveted to the blower housing baffle. Replacement speed control assembly includes screws and nuts for mounting. Replacement baffle has threaded holes.

ENGINE TECUMSEH MODEL HS50-67223E (Continued)



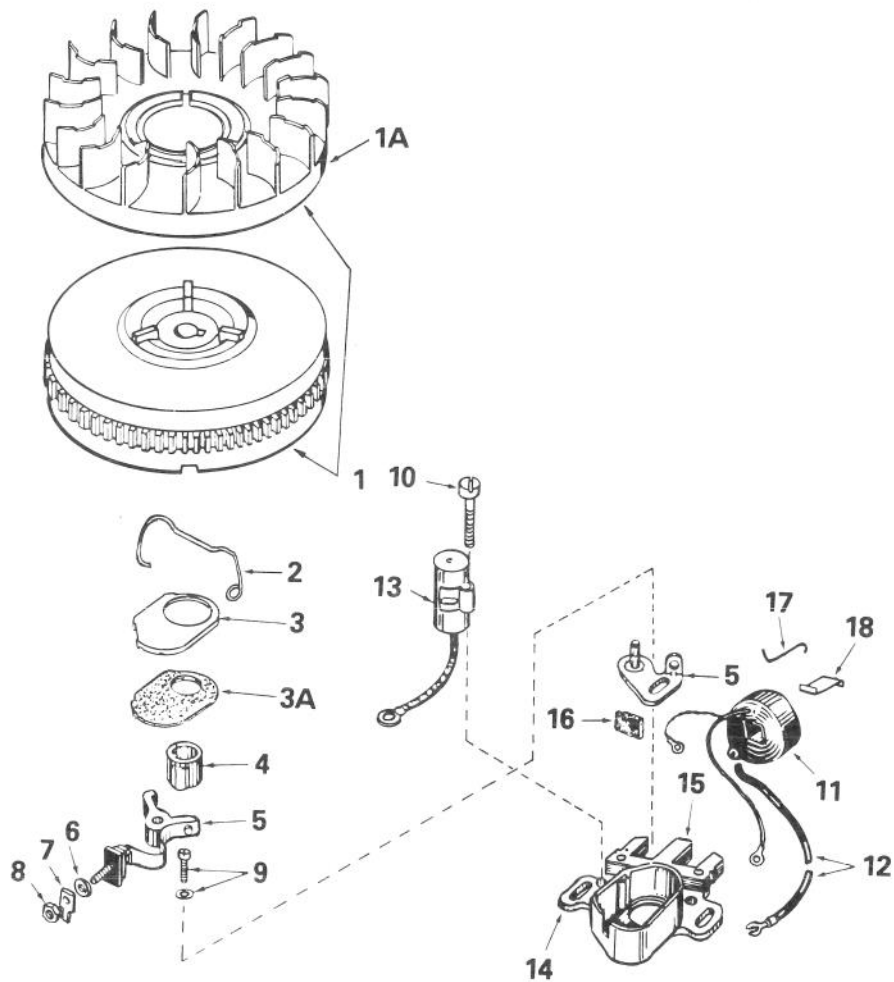
ENGINE TECUMSEH MODEL HS50-67223E (Continued)

| Ref. No. | Part No. | Description | No. Used |
|----------|----------|------------------------------------|----------|
| 97 | 30590A | Washer, Flat | 1 |
| 102 | *33670 | Gasket, Muffler | 1 |
| 103 | 33697A | Muffler | 1 |
| 104 | 650327 | Screw, Fil. Hd. | 2 |
| 105 | 26460 | Clamp, Fuel line | 4 |
| 106 | 30574 | Shaft, Mechanical governor | 1 |
| 107 | 30591 | Gear Assy. Governor (Incl. #97) | 1 |
| 108 | 29193 | Ring, Retaining | 2 |
| 109 | 30588A | Spool, Governor | 1 |
| 111 | 28371B | Bracket, Fuel tank mounting | 1 |
| 112 | 34182 | Bracket, Fuel tank mounting | 1 |
| 113 | 650675 | Washer, Flat | 1 |
| 114 | 34711 | Tank Assy., Fuel (Incl. #115) | 1 |
| 115 | 34210 | Cap, Fuel tank | 1 |
| 116 | 650665 | Screw, Hex Washer Hd. self-tap | 2 |
| 117 | 32961 | Valve, Fuel shut-off | 1 |
| 118 | 30705 | Line, Fuel | 1 |
| 119 | 29774 | Line, Fuel | 1 |
| 120 | 650128 | Screw, Fil. Hd. | 1 |
| 121 | 29745 | Extension, Blower housing | 1 |
| 124 | 34814 | Primer Assy. | 1 |
| 128 | 32180B | Line, Primer | 1 |
| 129 | 610961 | Key, Flywheel | 1 |
| 130 | 34212 | Bracket, Hold down | 1 |
| 131 | 30200 | Screw, Hex washer Hd. self-tap | 1 |
| 134 | 34694 | Cup, Starter | 1 |

| Ref. No. | Part No. | Description | No. Used |
|----------|----------|--|----------|
| 137 | 28212 | Spacer, Tank bracket | 2 |
| 139 | 31335 | Clamp, Governor lever | 1 |
| 140 | 650548 | Screw, Hex washer Hd. | 1 |
| 142 | 650805 | Screw, Hex Hd. w/belleville washer | 1 |
| 143 | 34676 | Dipstick, Oil (Incl. #144) | 1 |
| 144 | 33590 | "O" Ring | 1 |
| 145 | 33893A | Tube, Oil fill | 1 |
| 149 | 650549 | Screw, Fil. Hd. | 1 |
| 150 | 31342 | Spring, Compression | 1 |
| 151 | ‡30322 | Locknut, Hex "Keps" | 2 |
| 152 | †650139 | Screw, Fil. Hd. | 2 |
| 153 | 34241 | Wire, Ground | 1 |
| 154 | 610973 | Terminal Assy. | 1 |
| 158 | 32410 | Knob, Speed control | 1 |
| 160 | †33858A | Bracket Assy., Control (Incl. #149 thru 152&154) | 1 |
| 161 | 33876 | Gasket, Stator | 1 |
| 162 | 611030 | Magneto (The complete magneto is not available as an assembly. The magneto number is shown for refer- ence purposes only. Order component parts individually, as shown in parts list.) | 1 |
| 163 | 632107 | Carburetor (Incl. #87) | 1 |
| 164 | 590473 | Starter Assy., Rewind | 1 |
| 165 | 33683 | Gasket Set (Incl. items marked*) | 1 |

*Indicates parts included in Gasket Set, Ref. #165.

†In original production, the speed control assembly is riveted to the blower housing baffle. Replacement speed control assembly includes screws and nuts for mounting. Replacement baffle has threaded holes.

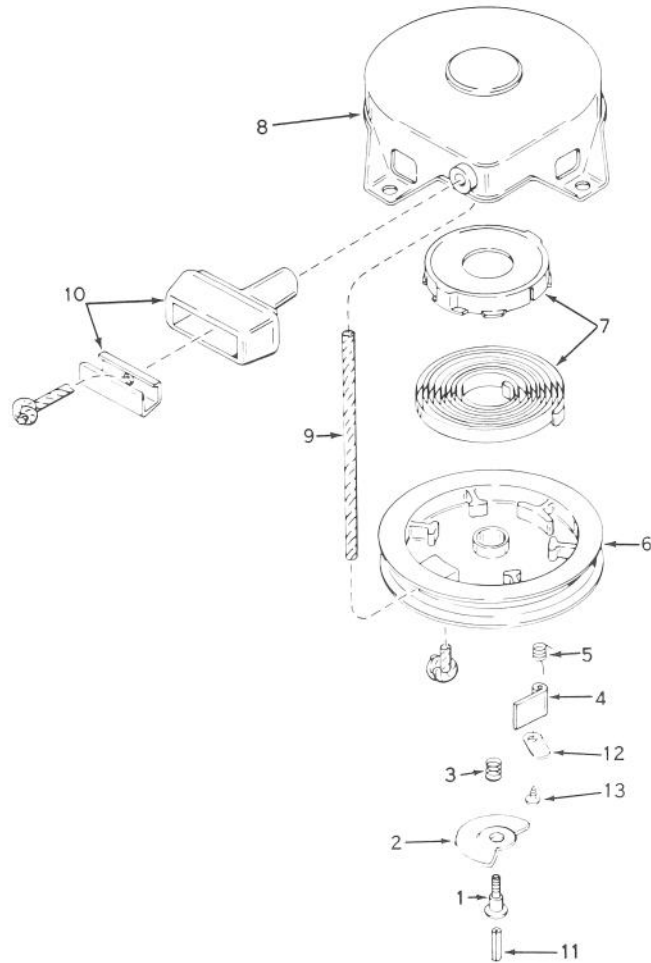


MAGNETO NO. 611030

| Ref. No. | Part No. | Description | No. Used |
|----------|----------|--------------------------------|----------|
| 1 | 611029 | Flywheel (Incl. #1A) | 1 |
| 1A | 610933 | Fan, Blower | 1 |
| 2 | 30551 | Spring, Breaker box dust cover | 1 |
| 3 | 610947 | Cover, Dust | 1 |
| 3A | 610955 | Gasket, Dust cover | 1 |
| 4 | 30992 | Cam, Breaker | 1 |
| 5 | 30547A | Contact Assembly, Breaker | 1 |
| 6 | 610385 | Washer, Terminal | 1 |
| 7 | 33356 | Tab, Ground terminal | 1 |
| 8 | 610408 | Nut, Terminal | 1 |

| Ref. No. | Part No. | Description | No. Used |
|----------|----------|--|----------|
| 9 | 29181 | Screw & Washer, Breaker | 1 |
| 10 | 610593 | Screw, Condenser | 1 |
| 11 | 30560A | Coil Assy. (Incl. #12) | 1 |
| 12 | 30554 | Wire, Lead | 1 |
| 13 | 30548B | Condenser | 1 |
| 14 | 30545 | Core & Plate | 1 |
| 15 | 30561B | Stator Assy. (Incl. #2,3,3A, 5 thru 14, 16 & 17) | 1 |
| 16 | 30549 | Felt, Cam wiper | 1 |
| 17 | 31311 | Clip, Coil locking | 1 |

*The complete magneto is not available as an assembly. The magneto number is shown for reference purposes only. Order component



REWIND STARTER NO. 590473

| Ref. No. | Part No. | Description | No. Used | Ref. No. | Part No. | Description | No. Used |
|----------|----------|-----------------------|----------|----------|----------|-----------------------------------|----------|
| 1 | 590409A | Screw | 1 | 8 | 590415 | Housing Assy., Starter (Incl. #1) | 1 |
| 2 | 590474 | Cam, Dog | 1 | 9 | 590451A | Rope, Starter | 1 |
| 3 | 590411 | Spring, Brake | 1 | 10 | 590387 | Handle Assy., Starter | 1 |
| 4 | 590148 | Dog, Starter | 1 | 11 | 590459 | Pin, Centering | 1 |
| 5 | 590475 | Spring, Dog | 1 | 12 | 590476 | Retainer, Dog | 1 |
| 6 | 590478 | Pulley | 1 | 13 | 590477 | Screw | 1 |
| 7 | 590414 | Spring & Keeper Assy. | 1 | | | | |

PRODUCT CHANGES

In an effort to make improvements available to TORO owners as quickly as possible, minor changes are incorporated into Toro's products from time to time that do not become immediately shown in the Parts Catalog. If such a change apparently has been made in your unit, which is not reflected in your manual, see your TORO Distributor or his Authorized TORO Service Dealer for information and part numbers.

IDENTIFICATION AND ORDERING

MODEL AND SERIAL NUMBERS

The Snowthrower has two identification numbers: a model number and a serial number. The two numbers are stamped on a decal which is located on back of engine mounting plate. In any correspondence concerning the Snowthrower, supply model and serial numbers to assure that correct information and replacement parts are obtained.

To order replacement parts from an Authorized TORO Service Dealer, supply the following information:

1. Model and serial numbers of the Snowthrower.
2. Part number, description, and quantity of part(s) desired.

Note: Do not order by reference number if a parts catalog is being used; use the PART NUMBER.

The Toro Promise

A ONE YEAR LIMITED WARRANTY

The Toro Company promises to repair any TORO Product if defective in materials or workmanship. The following time periods from the date of purchase apply:

| | |
|--|---------|
| Residential Product | 1 Year |
| Residential Products Used Commercially | 45 Days |

The costs of parts and labor are included, but the customer pays the transportation costs. Just return any residential product to an Authorized TORO Service Dealer or TORO Distributor.

Should you feel your TORO Product is defective and wish to rely on The Toro Promise, the following procedure is recommended:

1. Contact any Authorized TORO Service Dealer, TORO Master Service Dealer, or TORO Distributor (the Yellow Pages of your telephone directory is a good reference source).
2. He will either instruct you to return the product to him or recommend another Authorized TORO Service outlet which might be more convenient.
3. Bring the product along with your original sales slip, or other evidence of purchase date, to the service dealer.
4. The servicing dealer will inspect the unit, advise you whether the product is defective and, if so, make all repairs necessary to correct the defect without extra charge to you.

If for any reason you are dissatisfied with the dealer's analysis of the defect or the service performed, you may contact us.

Write:

TORO Consumer Service Department
8111 Lyndale Avenue South
Minneapolis, Minnesota 55420

The above remedy of product defects through repair by an Authorized TORO Service Dealer is the purchaser's sole remedy for any defect.

THERE IS NO OTHER EXPRESS WARRANTY ALL IMPLIED WARRANTIES OF MERCHANTABILITY AND

FITNESS FOR USE ARE LIMITED TO THE DURATION OF THE EXPRESS WARRANTY.

Some states do not allow limitations on how long an implied warranty lasts, so the above limitation may not apply to you.

This warranty applies only to parts or components which are defective and does not cover repairs necessary due to normal wear, misuse, accidents, or lack of proper maintenance. Regular, routine maintenance of the unit to keep it in proper operating condition is the responsibility of the owner.

All warranty repairs reimbursable under The Toro Promise must be performed by an Authorized TORO Service Dealer using Toro approved replacement parts.

Repairs or attempted repairs by anyone other than an Authorized TORO Service Account are not reimbursable under The Toro Promise. In addition, these unauthorized repair attempts may result in additional malfunctions, the correction of which is not covered by warranty.

THE TORO COMPANY IS NOT LIABLE FOR INDIRECT, INCIDENTAL OR CONSEQUENTIAL DAMAGES IN CONNECTION WITH THE USE OF THE PRODUCT INCLUDING ANY COST OR EXPENSE OF PROVIDING SUBSTITUTE EQUIPMENT OR SERVICE DURING PERIODS OF MALFUNCTION OR NON-USE.

Some states do not allow the exclusion or limitation of incidental or consequential damages, so the above limitation or exclusion may not apply to you.

This warranty gives you specific legal rights, and you may also have other rights which vary from state to state.

COUNTRIES OTHER THAN THE UNITED STATES OR CANADA

Customers who have purchased TORO products exported from the United States or Canada should contact their TORO Distributor (Dealer) to obtain guarantee policies for your country, province or state. If for any reason

you are dissatisfied with your Distributor's service or have difficulty obtaining guarantee information, contact the TORO importer. If all other remedies fail, you may contact us at The Toro Company.