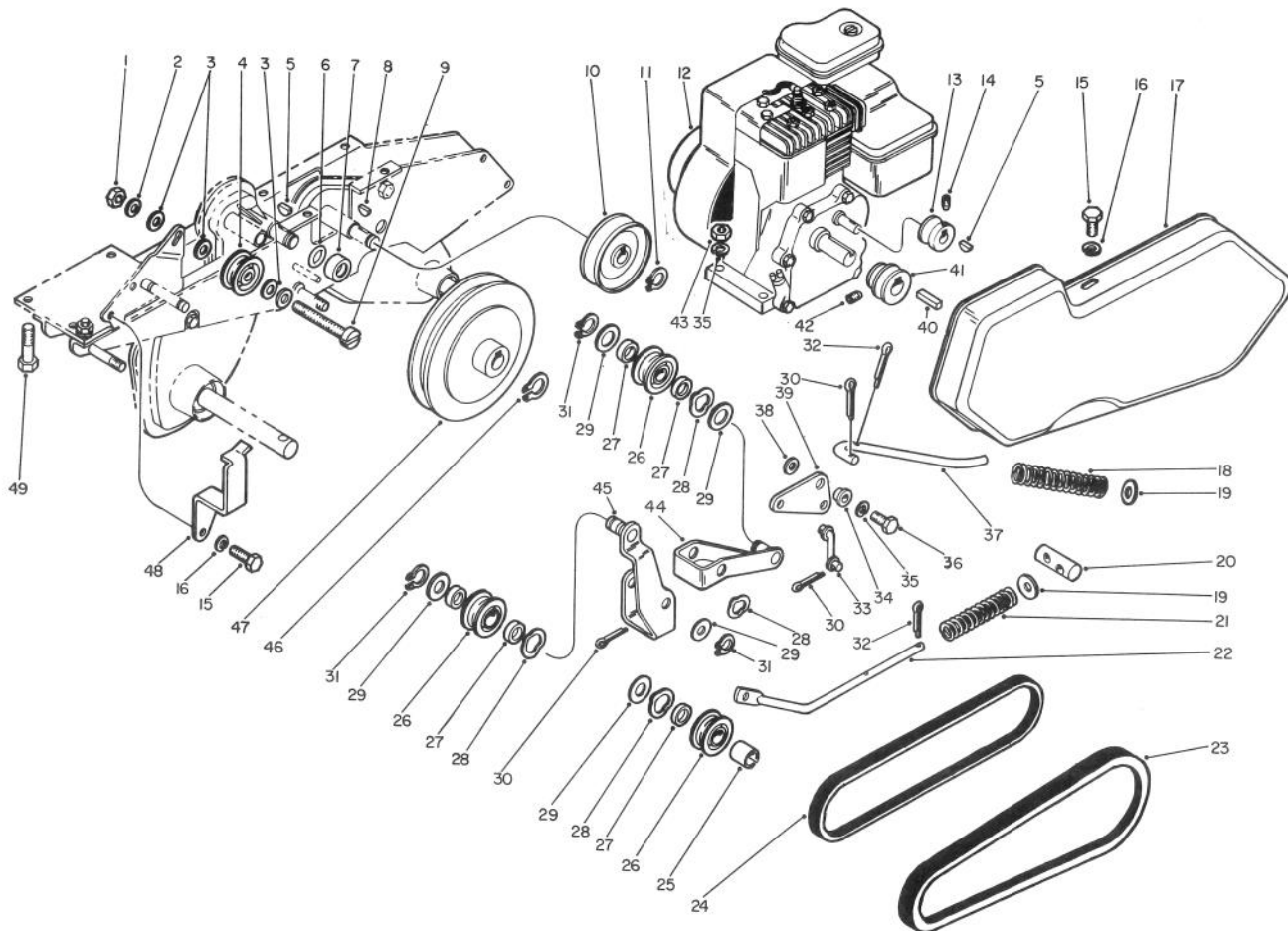




MODEL NO. 58160-3000001 & UP

**PARTS CATALOG**

**5 HP REAR TINE TILLER SWING HANDLE**



**ENGINE ASSEMBLY**

Ref. No.	Part No.	Description	No. Used
1	3217-7	Hex Nut	1
2	3253-21	Lockwasher	1
3	3256-24	Washer	4
4	47-8020	Idler Pulley	1
5	3257-24	Woodruff Key	2
6	47-8560	O-Ring	1
7	47-8570	Seal Cup	1
8	3257-5	Key	1
9	47-8910	Machine Screw	1
10	47-9590	Pulley — Tines	1
11	47-9580	Retaining Ring	1
12	47-7700	Engine	1
13	47-8990	Camshaft Pulley	1
14	3245-1	Hex Socket Hd. Setscrew	2
15	321-2	Hex Hd. Capscrew	4

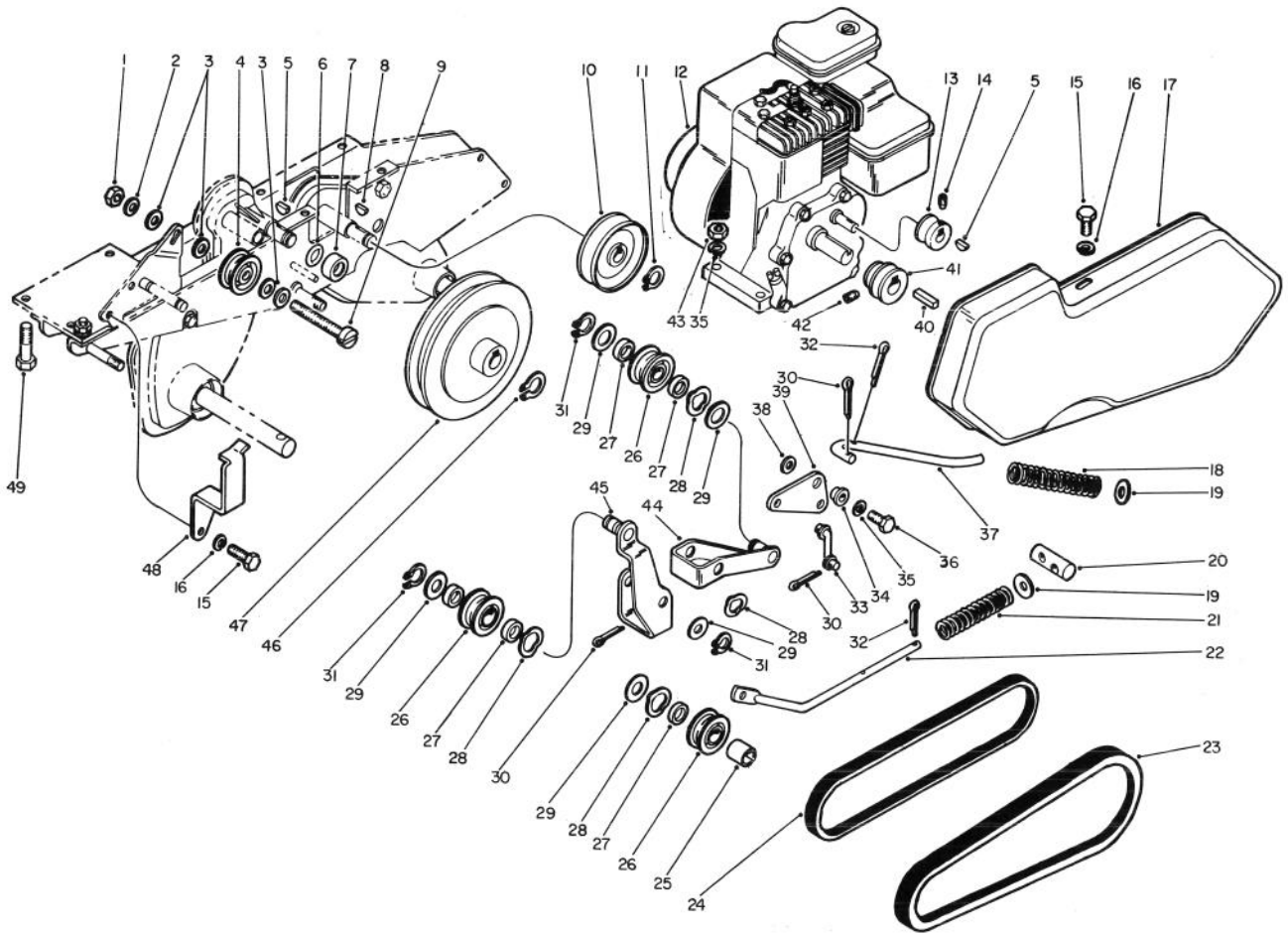
Ref. No.	Part No.	Description	No. Used
16	3253-3	Lockwasher	4
17	47-9060	Belt Guard w/Decal	1
18	47-9050	Spring — Tine Drive	1
19	47-7890	Washer	2
20	47-9030	Swivel	1
21	47-9330	Spring — Traction Drive	1
22	47-9120	Control Rod	1
23	47-9420	Tine Drive Belt	1
24	47-9430	Traction Drive Belt	1
25	48-1100	Spacer — Idler	1
26	47-9520	Idler Pulley	3
27	48-0990	Spacer	5
28	47-8150	Wave Washer	4
29	47-8110	Washer	5-8
30	3272-6	Cotter Pin	4

COPYRIGHT © ALL RIGHTS RESERVED

**The Toro Company — 1983**

MINNEAPOLIS, MN 55420 — U.S.A.

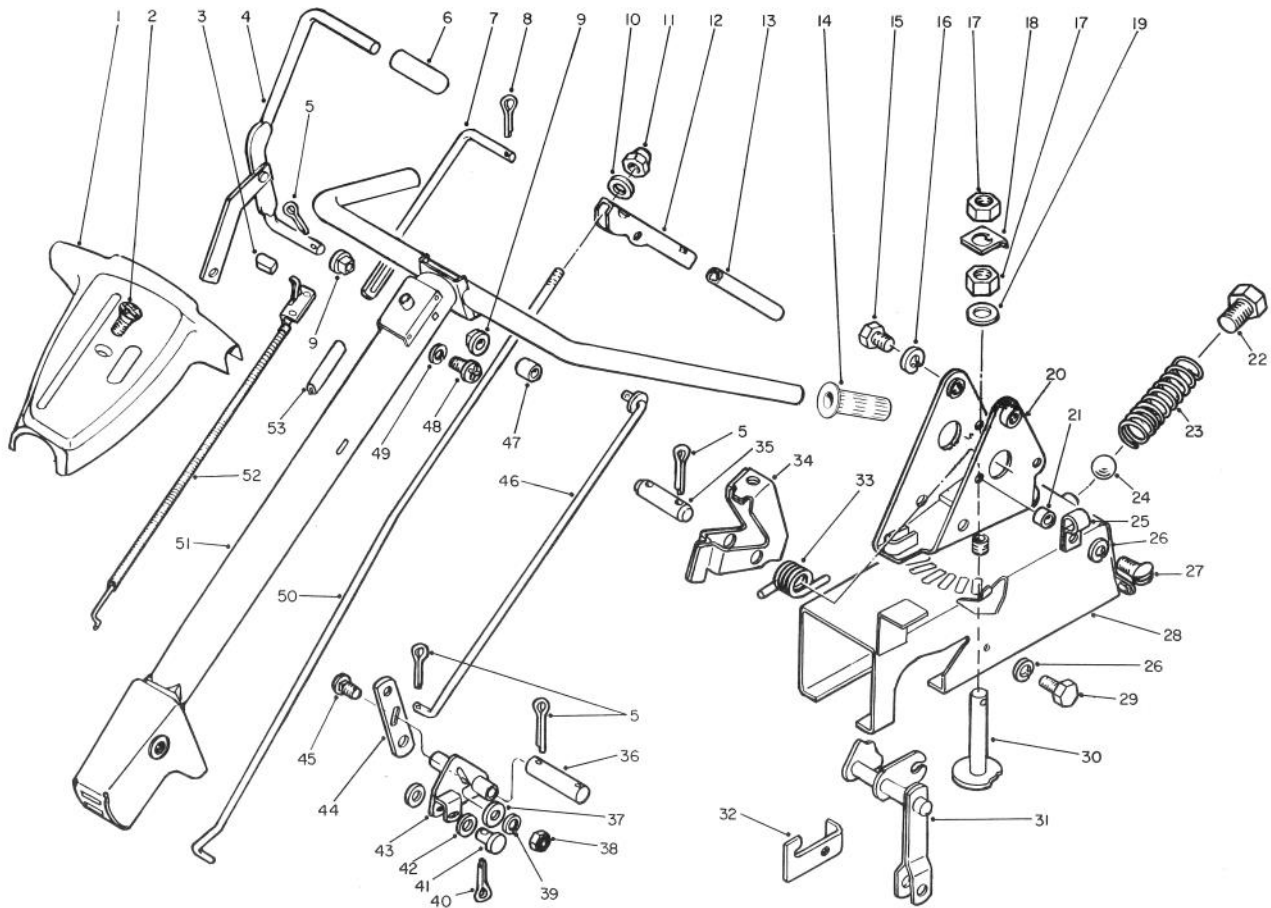
**PRICE \$1.00**



## ENGINE ASSEMBLY (Continued)

Ref. No.	Part No.	Description	No. Used
31	32120-64	Retaining Ring	3
32	3272-10	Cotter Pin	3
33	47-9340	Link	1
34	47-8180	Pivot Bushing	1
35	3253-4	Lockwasher	5
36	322-3	Hex Hd. Capscrew	1
37	47-9350	Control Rod	1
38	3256-1	Washer	1
39	47-9320	Bellcrank	1
40	21-5070	Square Key	1

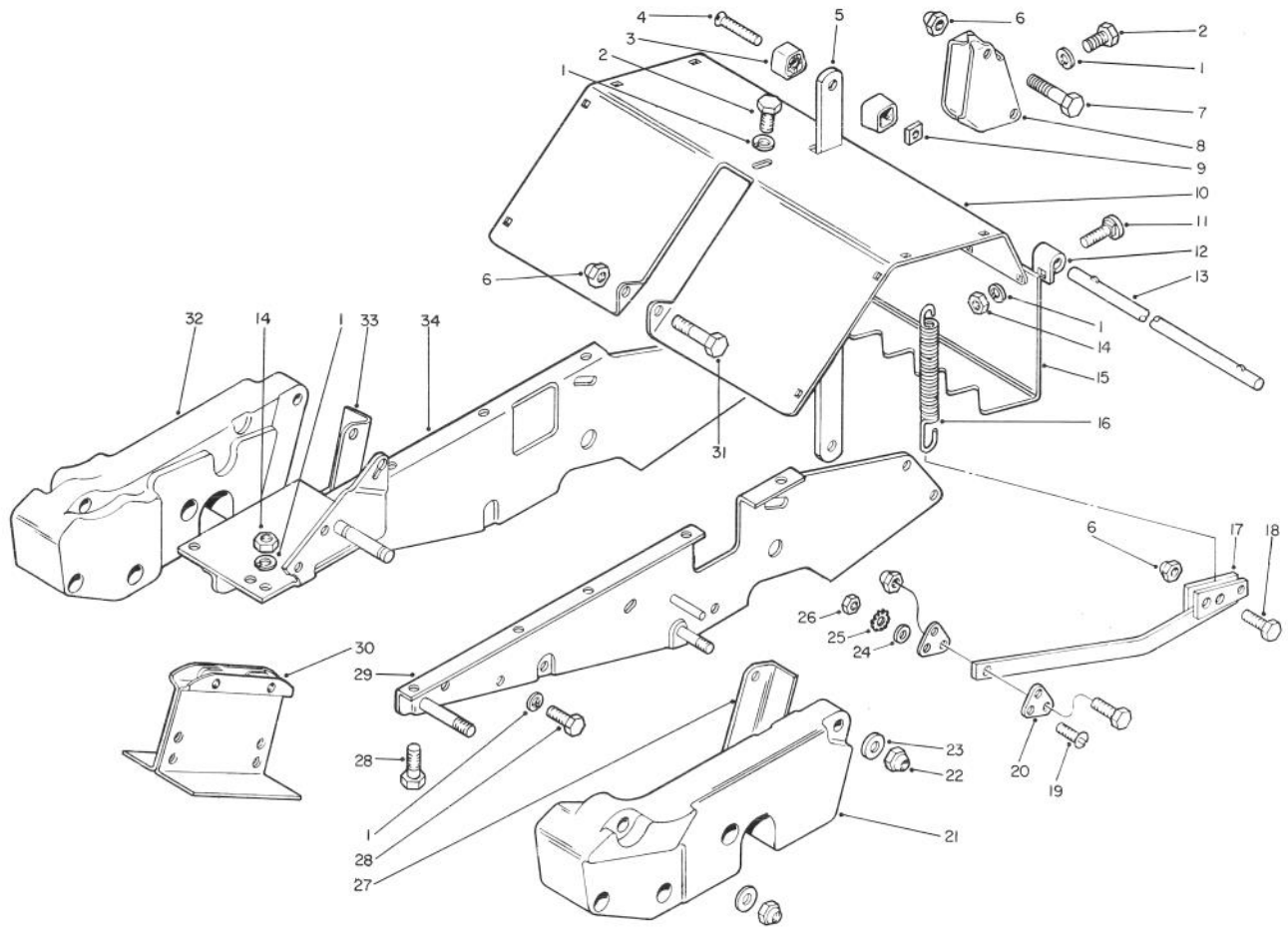
Ref. No.	Part No.	Description	No. Used
41	47-9070	Engine Pulley	1
42	3246-2	Hex Socket Hd. Setscrew	2
43	3217-6	Hex Nut	4
44	47-9150	Tine Drive Idler	1
45	47-9130	Traction Drive Idler	1
46	47-9280	Retaining Ring	1
47	47-9240	Pulley — Traction	1
48	47-9080	Belt Guide	1
49	322-7	Hex Hd. Capscrew	4



## HANDLE ASSEMBLY

Ref. No.	Part No.	Description	No. Used
1	47-7600	Handle Shroud w/Decal	1
2	47-8790	Machine Screw	1
3	47-8710	Grip — Throttle Control	1
4	47-9300	Control Handle	1
5	3272-10	Cotter Pin	8
6	47-9010	Grip	1
7	47-9290	Link	1
8	3272-6	Cotter Pin	2
9	47-8200	Bushing	2
10	3256-24	Washer	1
11	32152-2	Locknut — Cone	1
12	47-9100	Lever	1
13	47-8420	Grip	1
14	48-1130	Grip	2
15	323-6	Hex Hd. Capscrew	2
16	3253-5	Lockwasher	2
17	3220-7	Jam Nut	2
18	47-9500	Lock	1
19	3-6498	Thrust Washer	1
20	47-9410	Pivot	1
21	47-8330	Spacer — Clamp	1
22	47-8920	Hex Hd. Capscrew	1
23	47-9040	Spring — Detent	1
24	47-8470	Ball — Detent	1
25	47-8380	Clamp	1
26	3253-3	Lockwasher	2
27	3258-11	Machine Screw	1

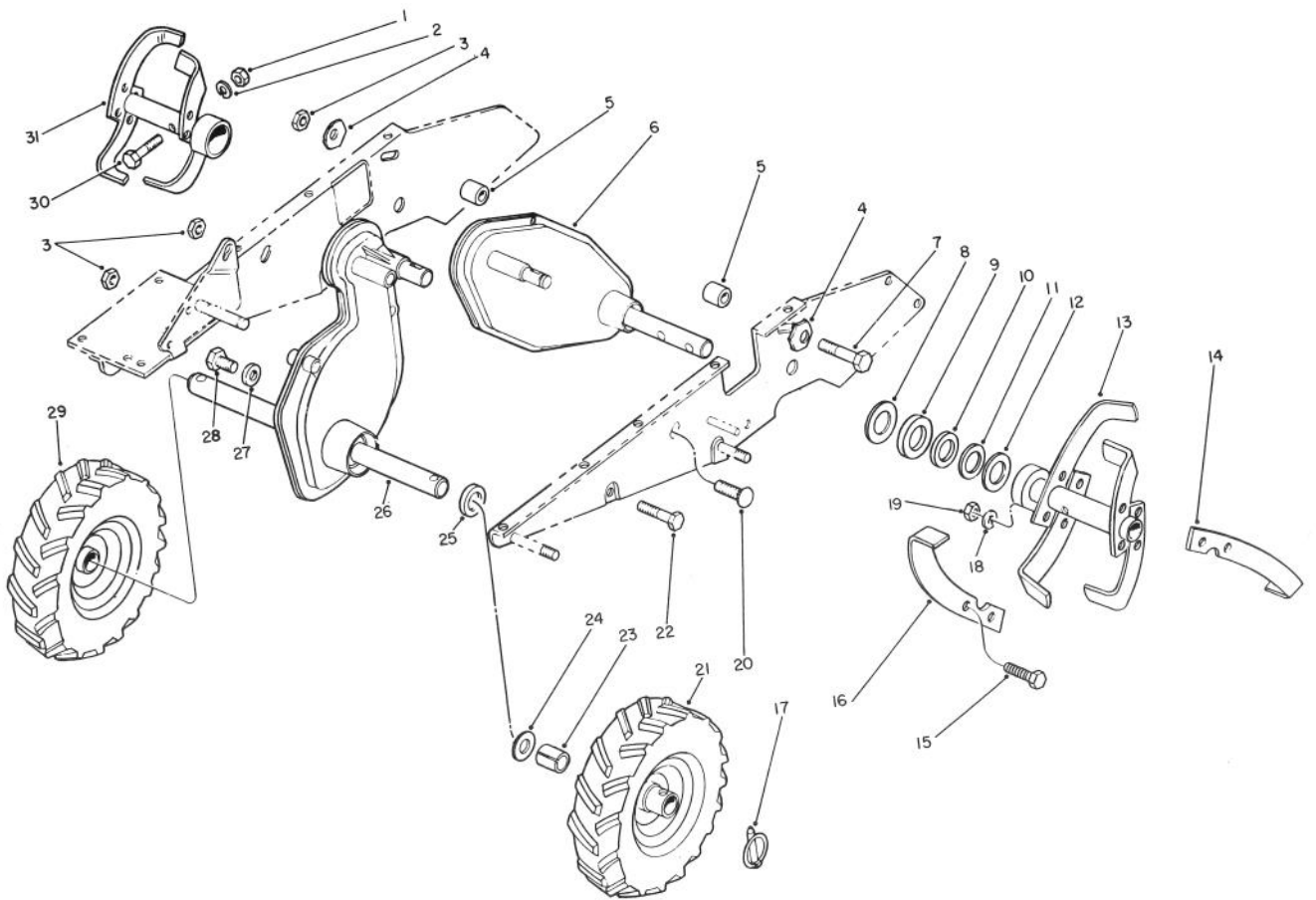
Ref. No.	Part No.	Description	No. Used
28	47-9390	Tunnel	1
29	321-2	Hex Hd. Capscrew	1
30	47-9180	Plunger	1
31	47-9210	Cam Assembly	1
32	47-9170	Retainer	1
33	47-9110	Spring	1
34	47-9370	Pawl	1
35	47-9310	Pin	1
36	47-9020	Pin	1
37	47-7880	Spacer	1
38	32152-1	Locknut	1
39	3253-4	Lockwasher	1
40	3272-1	Cotter Pin	1
41	47-9250	Clevis Pin	1
42	3256-1	Washer	2
43	47-9220	Bellcrank	1
44	47-9480	Lever	1
45	3230-2	Carriage Bolt	1
46	47-9380	Control Rod	1
47	47-9260	Spacer	1
48	47-8170	Pan Hd. Machine Screw	2
49	3255-17	Lockwasher — Ext. Tooth	2
50	47-9090	Control Rod	1
51	47-9400	Handle	1
52	47-9470	Throttle Control	1
53	47-9460	Slide	1



## FRAME AND SHIELD ASSEMBLY

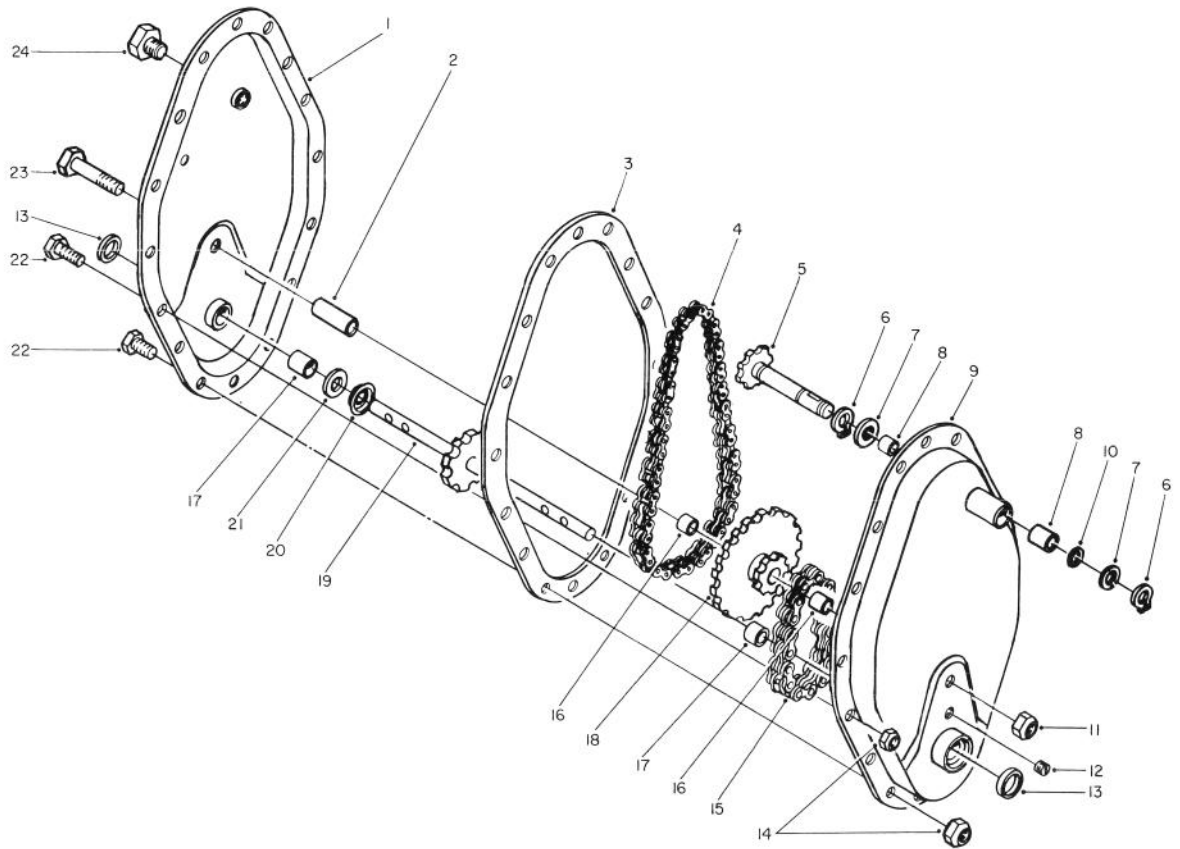
Ref. No.	Part No.	Description	No. Used
1	3253-4	Lockwasher	18
2	322-1	Hex Hd. Capscrew	2
3	47-8320	Handle	2
4	47-8930	Machine Screw	1
5	47-9140	Depth Control	1
6	32152-1	Locknut	5
7	322-11	Hex Hd. Capscrew	2
8	47-9190	Support	1
9	32107-5	Square Nut	1
10	48-0250	Shield w/Decal	1
11	3230-1	Carriage Bolt	4
12	47-9360	Hinge	4
13	47-9000	Rod	1
14	3217-6	Hex Nut	6
15	47-9160	Guard	1
16	47-9230	Spring	1
17	48-0170	Skid	1

Ref. No.	Part No.	Description	No. Used
18	322-5	Hex Hd. Capscrew	2
19	3251-12	Machine Screw	2
20	47-9200	Lug	2
21	48-0230	Counterweight — L.H.	1
22	32152-2	Locknut	4
23	3256-24	Washer	4
24	3256-49	Washer	2
25	3255-17	Lockwasher — Ext. Tooth	2
26	3217-26	Hex Nut	2
27	48-0210	Hanger — Rear L.H.	1
28	322-2	Hex Hd. Capscrew	12
29	48-0520	Frame — L.H.	1
30	48-0190	Support — Counterweight	1
31	47-8940	Hex Hd. Capscrew	1
32	48-0220	Counterweight — R.H.	1
33	48-0200	Hanger — Rear R.H.	1
34	48-0510	Frame — R.H.	1



## WHEEL AND TINE ASSEMBLY

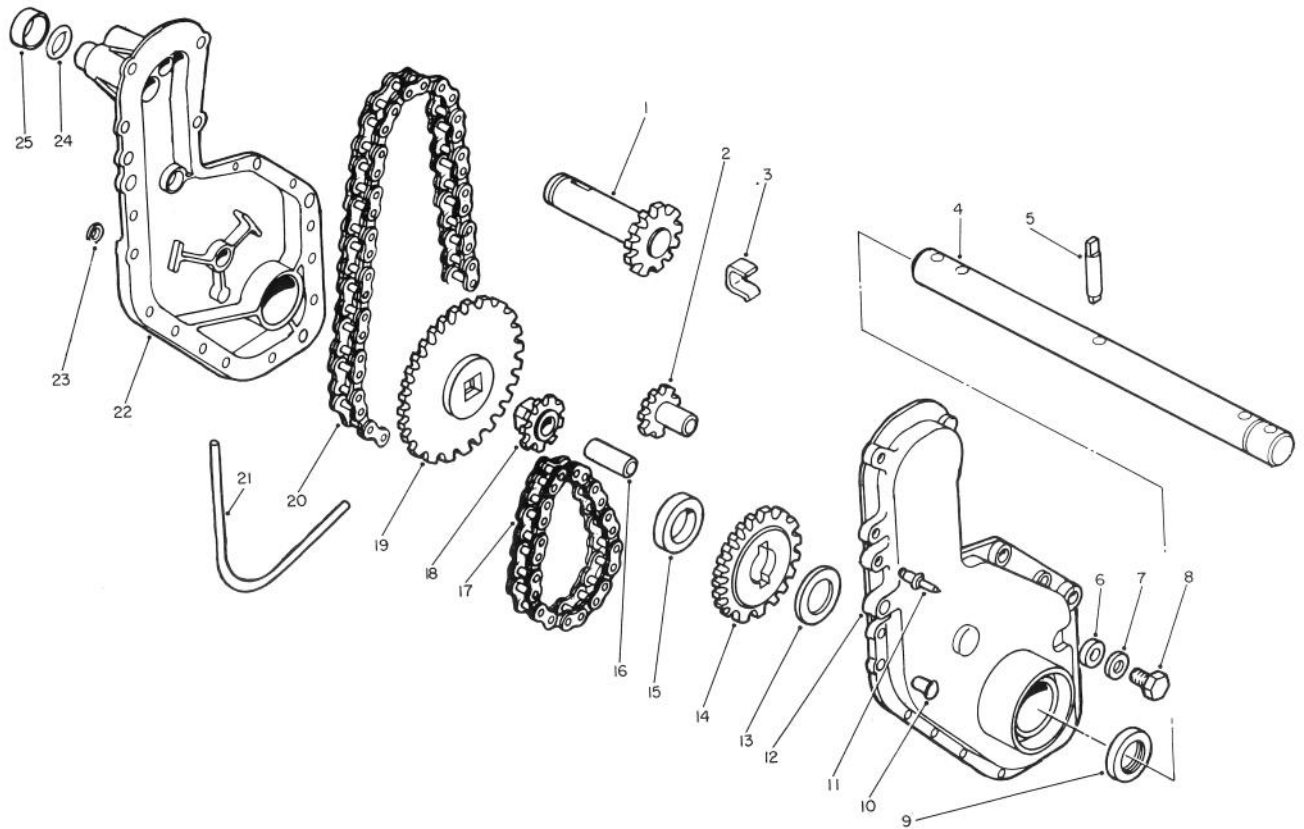
Ref. No.	Part No.	Description	No. Used	Ref. No.	Part No.	Description	No. Used
1	3219-3	Hex Nut	2	17	47-8280	Kilk Pin	2
2	3253-21	Lockwasher	2	18	3253-6	Lockwasher	16
3	32152-1	Locknut	3	19	3219-4	Hex Nut	16
4	47-8310	Pyramidal Lockwasher	2	20	3230-7	Carriage Bolt	1
5	49-3830	Spacer	2	21	48-0890	Tire & Wheel Assy. — L.H.	1
6	48-1270	Chain Case Assy. — Tine Drive	1	22	322-8	Hex Hd. Capscrew	1
7	47-8940	Hex Hd. Capscrew	1	23	48-0900	Spacer — Wheel — Long	2
8	47-9670	Washer — Back Up	2	24	47-8300	Washer	2
9	47-7780	Felt Seal	2	25	47-8260	Seal	2
10	47-8100	Felt Seal	2	26	48-1250	Chain Case Assembly — Wheel Drive	1
11	47-8050	Washer	2	27	47-8760	Nylon Washer	1
12	47-8060	Felt Seal	2	28	322-1	Hex Hd. Capscrew	1
13	48-0840	Tine Assembly — L.H.	1	29	48-0880	Tire & Wheel Assy. — R.H.	1
14	48-0810	Tine — R.H.	4	30	47-8860	Hex Hd. Capscrew	2
15	47-7980	Tine Bolt	16	31	48-0830	Tine Assembly — R.H.	1
16	48-0820	Tine — L.H.	4				



## CHAIN CASE ASSEMBLY NO. 48-1270

Ref. No.	Part No.	Description	No. Used
1	48-0350	Chain Case — R.H. w/Bearings	1
2	47-7960	Idler Sleeve	1
3	47-9570	Gasket	1
4	47-9620	Chain — Upper	1
5	47-9660	Input Shaft	1
6	47-9580	Retaining Ring	2
7	47-9650	Washer — Input Shaft	2
8	252-82	Bearing — Input Shaft	2
9	48-0360	Chain Case — L.H. w/Bearings	1
10	47-9610	Seal — Input Shaft	1
11	32152-2	Locknut	1
12	285-10	Pipe Plug	1

Ref. No.	Part No.	Description	No. Used
13	47-7770	Seal — Tine Shaft	2
14	32152-4	Locknut	15
15	47-9560	Chain — Lower	1
16	252-90	Bearing	2
17	47-9550	Bearing — Axle	2
18	47-9630	Sprocket (Incl. Ref. #16)	1
19	48-1280	Tine Shaft	1
20	47-9640	Spacer Cup	1
21	47-8780	Shim — Gear	1-2
22	321-2	Hex Hd. Capscrew	15
23	47-8900	Hex Hd. Capscrew	1
24	3213-20	Hex Hd. Capscrew	1



## CHAIN CASE ASSEMBLY NO. 48-1250

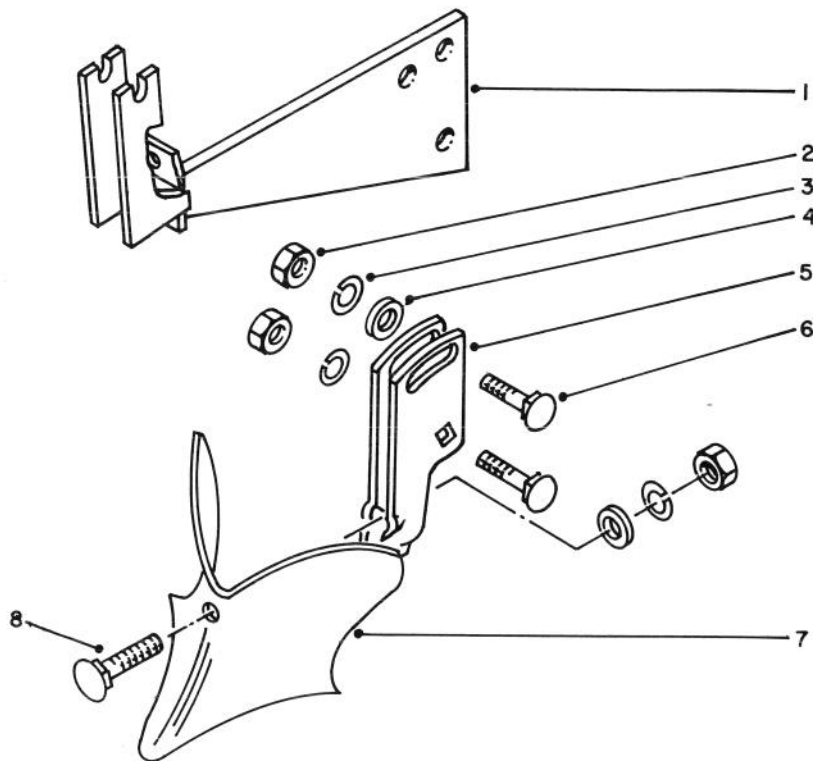
Ref. No.	Part No.	Description	No. Used
1	47-9270	Input Shaft	1
2	47-8580	Idler Sprocket — 9 Tooth	1
3	47-8540	"U" Clip	1
4	48-0860	Axle	1
5	47-8590	Drive Pin	1
6	47-8760	Nylon Washer	1
7	3256-23	Washer	1
8	322-1	Hex Hd. Capscrew	1
9	47-8260	Oil Seal	2
10	47-8460	Rivet	14
†*	3251-4	Screw — Rd. Hd. Machine	14
11	47-8770	Pop Rivet	2
12	47-8510	Chain Case — R.H.	1
13	47-8300	Thrust Washer	1

Ref. No.	Part No.	Description	No. Used
14	47-8960	Sprocket — 27 Tooth	1
15	47-9450	Washer	1
16	47-8600	Shaft — Sprocket	1
17	47-8980	#35 Roller Chain	1
18	47-8970	Sprocket — 10 Tooth	1
19	47-9490	Sprocket	1
20	47-8610	#35 Rollerless Chain	1
21	47-8550	Gasket	1
22	47-9440	Chain Case — L.H. w/Bearing	1
23	3256-49	Washer	14
†*	3255-5	Lockwasher — External Tooth	14
†*	3217-26	Nut — Hex Machine	14
24	47-8560	O-Ring	1
25	47-8570	Seal Cup	1

\*Not Illustrated

†Service Replacement Parts for Item #10 & 23



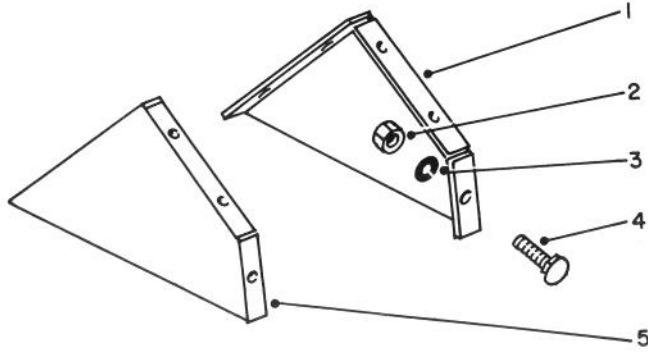


### 8" FURROW OPENER MODEL 59752 (Optional)

Ref. No.	Part No.	Description	No. Used
1	49-3380	Support	1
2	3217-7	Hex Nut	3
3	3253-5	Lockwasher	3
4	3256-24	Washer	2

Ref. No.	Part No.	Description	No. Used
5	49-3390	Holder	1
6	3231-25	Carriage Bolt	2
7	49-3400	Shovel	1
8	49-3410	Plow Bolt	1



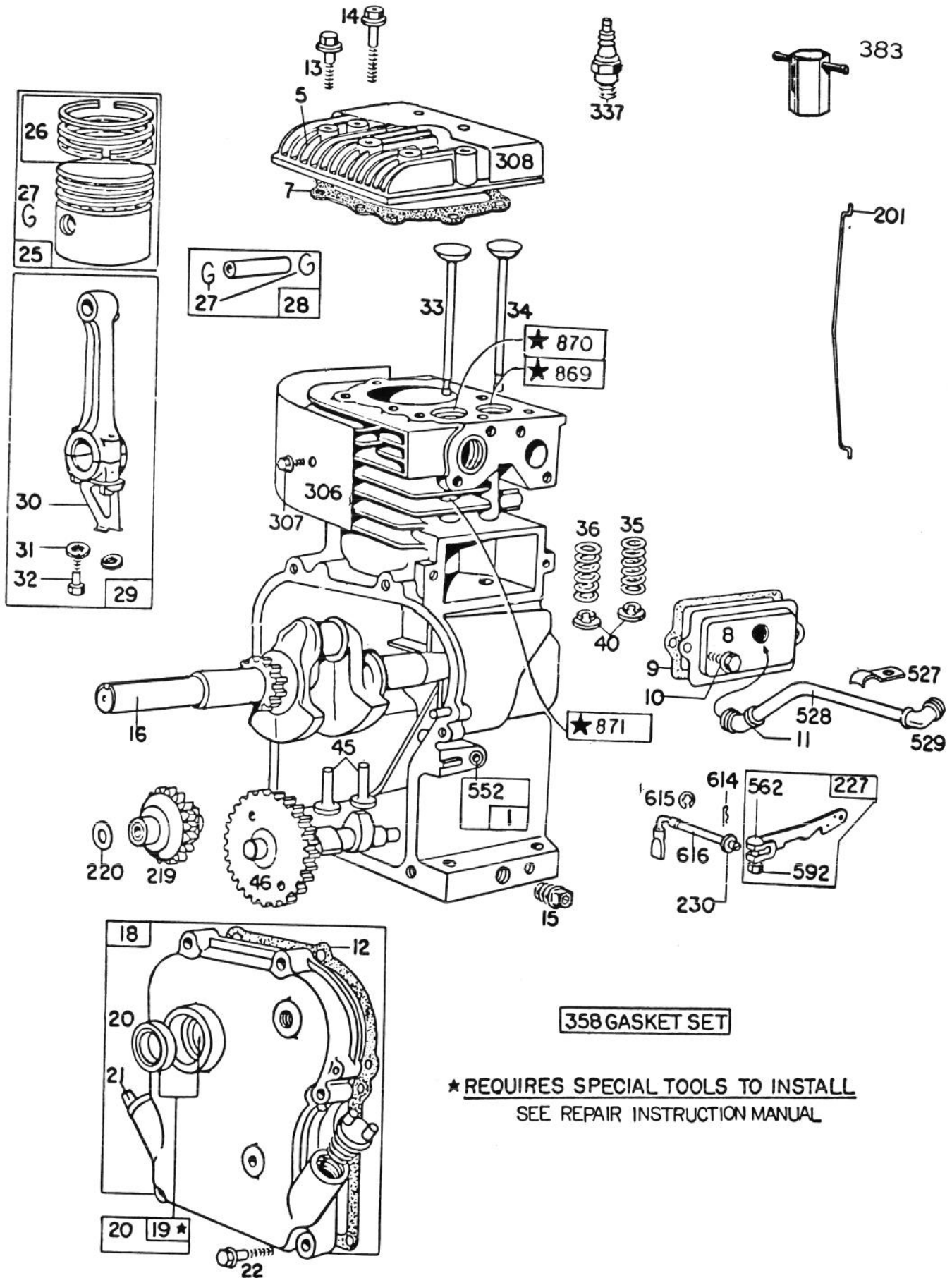


### TINE SHIELDS MODEL 59753 (Optional)

Ref. No.	Part No.	Description	No. Used
1	49-3760	Tine Shield — R.H. Side	1
2	3217-5	Hex Nut	10
3	3253-3	Lockwasher	10

Ref. No.	Part No.	Description	No. Used
4	49-3780	Carriage Bolt	10
5	49-3770	Tine Shield — L.H. Side	1

# ENGINE BRIGGS & STRATTON MODEL 130292-1671-02



**358 GASKET SET**

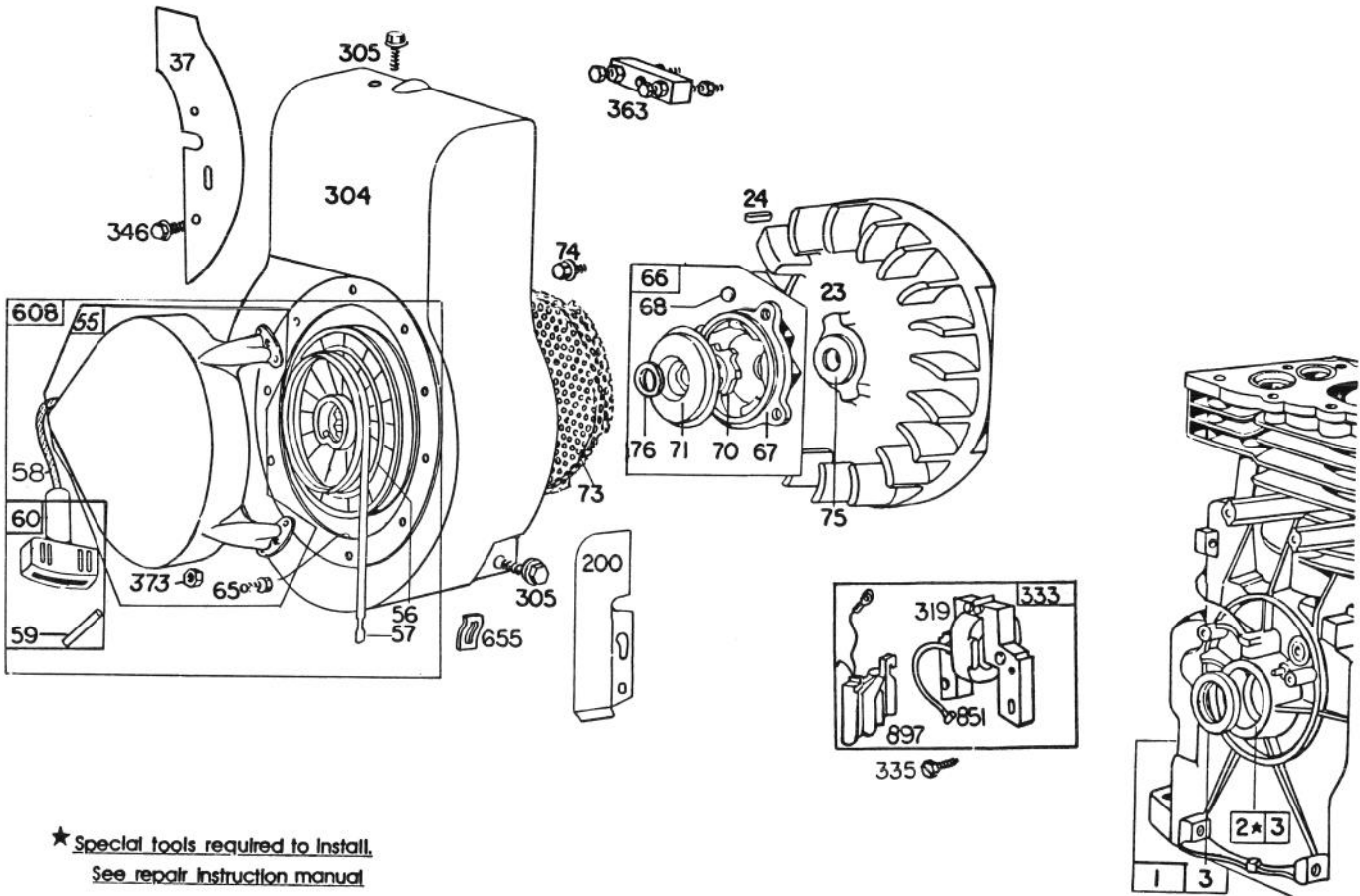
**★ REQUIRES SPECIAL TOOLS TO INSTALL  
SEE REPAIR INSTRUCTION MANUAL**

# ENGINE BRIGGS & STRATTON MODEL 130292-1671-02

Ref. No.	Part No.	Description	No. Used
1	395990	Cylinder Assembly	1
5	211542	Head — Cylinder	1
7	*270383	Gasket — Cylinder Head	1
8	294178	Breather — Valve Chamber	1
9	*27549	Gasket — Valve Cover	1
10	93394	Screw — Breather Mtg.	1
11	66578	Grommet — Breather Tube	1
12	*270080	Gasket — Crankcase — .015" thick (Standard)	1
	*270125	Gasket — Crankcase — .005" thick	1
	*270126	Gasket — Crankcase — .009" thick	1
13	93368	Screw — Cylinder Head (2-3/32" long)	1
14	93369	Screw — Cylinder Head (2-15/32" long)	1
15	93448	Plug — Pipe	1
16	260938	Crankshaft	1
18	298183	Cover Assy. — Crankcase	1
19	297603	Bushing — Crankcase Cover Note: Requires special tools for installation.	1
20	294606	Seal — Oil Note: 391484 Seal — Oil Used on the Auxiliary P.T.O. Shaft	1
21	66768	Plug — Oil Filler	1
22	93032	Screw — Crankcase Cover Mounting	1
25	298904	Piston Assy. Standard	1
	298905	Piston Assy.— .010" O.S.	1
	298906	Piston Assy.— .020" O.S.	1
	298907	Piston Assy. — .030" O.S.	1
		<b>Piston Ring Sets:</b> Note: For Chrome Piston Ring Set — Standard Size — Order Part No. 299742.	1
26	298982	Ring Set — Standard Piston	1
	298983	Ring Set — .010" O.S. Piston	1
	298984	Ring Set — .020" O.S. Piston	1
	298985	Ring Set — .030" O.S. Piston	1
27	26026	Lock — Piston Pin	1
28	298909	Pin Assy. — Piston — Standard	1
	298908	Pin Assy. — Piston — .005" O.S.	1

Ref. No.	Part No.	Description	No. Used
29	299430	Rod Assy. — Connecting Note: For Connecting Rod with .020" undersize Crankpin Bore — Order No. 390459	1
30	221890	Dipper — Connecting Rod	1
31	222282	Washer (One for each screw)	1
32	92296	Screw — Connecting Rod	1
33	211119	Valve — Exhaust	1
34	261044	Valve — Intake	1
35	260552	Spring — Intake Valve	1
36	26478	Spring — Exhaust Valve	1
40	93312	Retainer — Valve Spring	1
45	260642	Tappet — Valve	1
46	211284	Gear — Cam	1
201	261558	Link — Governor	1
219	391737	Gear — Governor	1
220	221551	Washer — Thrust	1
227	393920	Lever Assy. — Governor	1
230	222450	Washer — Governor Lever (1/4" I.D.)	1
306	221511	Shield — Cylinder	1
307	93042	Screw — Cylinder Shield Mounting	1
308	221512	Cover — Cylinder Head	1
337	298809	Plug — Spark (1-1/2" high — 37-42 M.M.)	1
358	297615	Gasket Set	1
383	89838	Wrench — Spark Plug	1
527	221514	Clamp — Breather Tube	
528	230722	Tube — Breather	1
529	67838	Grommet — Breather Tube	1
552	231079	Bushing — Governor Crank (1/4" I.D.)	1
562	92613	Bolt — Governor Lever	1
592	231082	Nut — Hex.	1
614	93306	Cotter — Hair Pin	1
615	93307	Retainer — E-Ring	1
616	231077	Crank — Governor	1
869	211787	Seat — Intake Valve (Standard)	1
870	211172	Seat — Exhaust Valve (Standard)	1
871	63709	Guide — Exhaust Valve	1

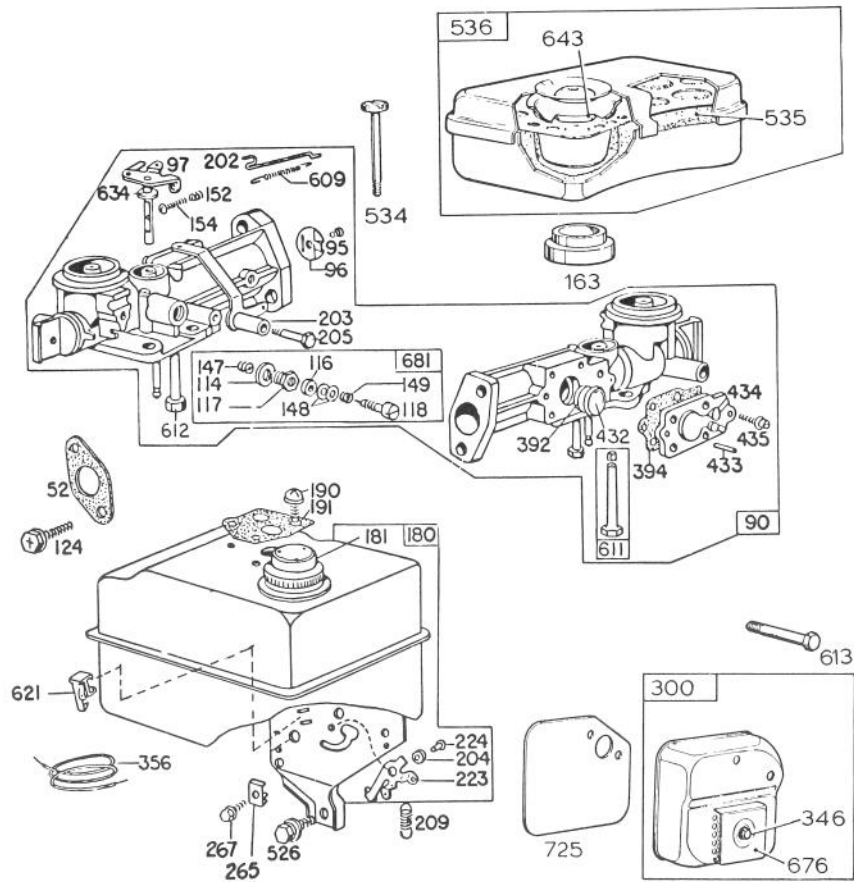
\*Included in Gasket Set —  
Part No. 297615.



## ENGINE BRIGGS & STRATTON MODEL 130292-1671-02 (Continued)

Ref. No.	Part No.	Description	No. Used
1	395990	Cylinder Assembly	1
2	297565	Bushing — Cylinder Note: Requires special tools for installation	1
3	299819	Seal — Oil	1
23	297229	Flywheel — Magneto	1
24	222698	Key — Flywheel	1
37	222443	Guard — Flywheel	1
55	299431	Housing — Rewind Starter	1
56	295871	Pulley — Rewind Starter (Includes 63" long rope)	1
57	294303	Spring — Rewind Starter	1
58	66884	Rope — Rewind Starter — 63" long	1
59	230228	Pin — Starter Grip	1
60	393152	Grip — Starter Rope	1
65	93067	Screw — Stamped Steel Housing Mtg.	1
66	394558	Clutch Assy. — Rewind Starter	1
67	394897	Housing — Starter Clutch	1
68	63770	Ball — Clutch	1
70	298436	Ratchet — Rewind Starter	1

Ref. No.	Part No.	Description	No. Used
71	221653	Washer — Clutch Retainer	1
73	221923	Screen — Starter Pulley	1
74	93490	Screw	1
75	220865	Washer — Spring	1
76	68238	Washer — Ratchet Sealing	1
200	221480	Guide — Air	1
304	299410	Housing Blower	1
305	93158	Screw — Blower Housing Mounting	1
319	395490	Armature Assy. (Less Trigger Coil)	1
333	395491	Armature — Magneto	1
335	93414	Screw — Armature Mtg.	1
346	93705	Screw	1
363	19069	Flywheel Puller (Optional Accessory)	1
373	92987	Nut — Hex.	1
608	390463	Starter Assy. — Rewind	1
655	222598	Anchor — Spring	1
851	221798	Cable Terminal — Ignition	1
897	394970	Trigger Coil	1



## ENGINE BRIGGS & STRATTON MODEL 130292-1671-02 (Continued)

Ref. No.	Part No.	Description	No. Used
52	*27355	Gasket — Carburetor Mounting	2
90	299437	Carburetor Assembly	1
95	93499	Screw — Throttle Valve to Shaft	1
96	211203	Throttle — Carburetor	1
97	299212	Shaft and Lever — Throttle	1
114	66594	Gasket — Needle Valve Nut	1
116	65978	Packing — Needle Valve	1
117	230590	Nut — Needle Valve	1
118	23433	Valve — Needle	1
124	93357	Screw — Hex. Head	1
147	230591	Seat — Needle Valve	1
148	22235	Washer — Needle Valve	2
149	26336	Spring — Needle Valve	1
152	260575	Spring — Throttle Adjustment	1
154	93527	Screw — Machine, Rd. Hd.	1
163	27660	Gasket — Air Cleaner Mounting	1
180	297600	Tank Assembly — Fuel	1
181	392304	Cap — Fuel Tank	1
190	93440	Screw — Fuel Tank Mounting	1
191	*27911	Gasket — Fuel Tank Mounting	2
202	260678	Link — Throttle	1
203	393919	Crank — Bell	1
204	222962	Bushing Governor Lever ( Flat)	1
205	93838	Screw — Shoulder	1
209	260695	Spring — Governor	1

Ref. No.	Part No.	Description	No. Used
223	221517	Lever — Governor Control	1
224	93491	Rivet — Governor Control Lever Mounting	1
265	221535	Clamp — Casing	1
267	93496	Screw	1
300	297274	Muffler — Exhaust	1
346	93705	Screw	1
356	299500	Wire — Ground	1
392	260455	Spring — Fuel Pump Diaphragm	1
394	270026	Diaphragm	1
432	221377	Cap — Spring	1
433	93265	Pin — Diaphragm Cover	1
434	210959	Cover — Diaphragm	1
435	93141	Screw — Diaphragm Cover	1
526	93343	Screw — Tank Bracket Mounting	1
534	93322	Screw — Air Cleaner	1
535	27987	Element — Air Cleaner	1
536	297036	Cleaner Assembly — Air	1
609	260694	Spring — Throttle Link	1
611	391813	Fuel Pipe and Clip Assembly	1
612	296811	Pipe — Fuel	1
613	93377	Screw — Hex. Hd.	1
621	297472	Switch — Stop	1
634	270167	Washer, Throttle Shaft (Felt)	1
643	280374	Cup — Air Cleaner	1
676	393750	Deflector — Exhaust	1
681	299060	Needle Valve Kit	1
725	221885	Shield — Heat	1

\*Included in Gasket Set — Part No. 297615.

## PRODUCT CHANGES

In an effort to make improvements available to TORO owners as quickly as possible, minor changes are incorporated into Toro's products from time to time that do not become immediately shown in the Parts Catalog. If such a change apparently has been made in your unit, which is not reflected in your manual, see your TORO Distributor or his Authorized TORO Service Dealer for information and part numbers.

## IDENTIFICATION AND ORDERING

### MODEL AND SERIAL NUMBERS

The Tiller has two identification numbers: a model number and a serial number. The two numbers are stamped on a decal which is located on the back of the tiller above the tine shield. In any correspondence concerning the tiller, supply model and serial numbers to assure that correct information and replacement parts are obtained.

To order replacement parts from an Authorized TORO Service Dealer, supply the following information:

1. Model and serial numbers of the tiller.
2. Part number, description, and quantity of part(s) desired.

**Note:** Do not order by reference number if a parts catalog is being used; use the PART NUMBER.

## The Toro Promise

### A ONE YEAR LIMITED WARRANTY

*The Toro Company promises to repair your TORO Product if defective in materials or workmanship. The following time periods from the date of purchase apply:*

Residential Product . . . . . 1 Year  
Residential Products Used Commercially . . . 45 Days

*The costs of parts and labor are included, but the customer pays the transportation costs. Just return any residential product to an Authorized TORO Service Dealer or TORO Distributor.*

Should you feel your TORO Product is defective and wish to rely on The Toro Promise, the following procedure is recommended:

1. Contact any Authorized TORO Service Dealer, TORO Master Service Dealer, or TORO Distributor (the Yellow Pages of your telephone directory is a good reference source).
2. He will either instruct you to return the product to him or recommend another Authorized TORO Service outlet which might be more convenient.
3. Bring the product along with your original sales slip, or other evidence of purchase date, to the service dealer.
4. The servicing dealer will inspect the unit, advise you whether the product is defective and, if so, make all repairs necessary to correct the defect without extra charge to you.

If for any reason you are dissatisfied with the dealer's analysis of the defect or the service performed, you may contact us.

Write:

TORO Consumer Service Department  
8111 Lyndale Avenue South  
Minneapolis, Minnesota 55420

The above remedy of product defects through repair by an Authorized TORO Service Dealer is the purchaser's sole remedy for any defect.

THERE IS NO OTHER EXPRESS WARRANTY. ALL IMPLIED WARRANTIES OF MERCHANTABILITY AND

FITNESS FOR USE ARE LIMITED TO THE DURATION OF THE EXPRESS WARRANTY.

Some states do not allow limitations on how long an implied warranty lasts, so the above limitation may not apply to you.

This warranty applies only to parts or components which are defective and does not cover repairs necessary due to normal wear, misuse, accidents, or lack of proper maintenance. Regular, routine maintenance of the unit to keep it in proper operating condition is the responsibility of the owner.

All warranty repairs reimbursable under The Toro Promise must be performed by an Authorized TORO Service Dealer using Toro approved replacement parts.

Repairs or attempted repairs by anyone other than an Authorized TORO Service Account are not reimbursable under The Toro Promise. In addition, these unauthorized repair attempts may result in additional malfunctions, the correction of which is not covered by warranty.

THE TORO COMPANY IS NOT LIABLE FOR INDIRECT, INCIDENTAL OR CONSEQUENTIAL DAMAGES IN CONNECTION WITH THE USE OF THE PRODUCT INCLUDING ANY COST OR EXPENSE OF PROVIDING SUBSTITUTE EQUIPMENT OR SERVICE DURING PERIODS OF MALFUNCTION OR NON-USE.

Some states do not allow the exclusion or limitation of incidental or consequential damages, so the above limitation or exclusion may not apply to you.

This warranty gives you specific legal rights, and you may also have other rights which vary from state to state.

## COUNTRIES OTHER THAN THE UNITED STATES OR CANADA

Customers who have purchased TORO products exported from the United States or Canada should contact their TORO Distributor (Dealer) to obtain guarantee policies for your country, province or state. If for any reason

you are dissatisfied with your Distributor's service or have difficulty obtaining guarantee information, contact the TORO importer. If all other remedies fail, you may contact us at The Toro Company.



# MAINTENANCE RECORD

Date	Hours Used	Oil Change	Air Cleaner Service	Lubrication	Winter Storage	Spring Service	Spark Plug Gap



# MAINTENANCE RECORD

Date	Hours Used	Oil Change	Air Cleaner Service	Lubrication	Winter Storage	Spring Service	Spark Plug Gap