



# Flexible Grass Basket Kit or Extended Flexible Grass Basket Kit

## Reelmaster® 3550 Series 18-inch Cutting Unit

Model No. 03923

Model No. 03924

### Installation Instructions

**Note:** Determine the left and right sides of the machine from the normal operating position.

#### ⚠ WARNING

#### CALIFORNIA Proposition 65 Warning

Use of this product may cause exposure to chemicals known to the State of California to cause cancer, birth defects, or other reproductive harm.

### Loose Parts

Use the chart below to verify that all parts have been shipped.

Procedure	Description	Qty.	Use
<b>1</b>	Basket guide	1	Install the basket guides and brackets.
	Basket bracket	1	
	Screw (5/16 x 1/2 inch)	1	
	Roll pin	1	
	Left torsion spring (gold)	1	
	Right torsion spring (black)	1	
	Basket collar	1	
	Washer (3/8 x 7/8 inch)	2	
	Bolt (5/16 x 1-1/4 inches)	2	
	Plastic washer	1	
<b>2</b>	Spacer	2	Install the spacers.
	Flange locknut	2	
	Bolt (3/8 x 1-1/4 inches)	2	
<b>3</b>	Cutoff bar	1	Install the cutoff bar.
	Bolt (1/4 x 1-3/4 inches)	4	
	Locknut (1/4 inch)	4	
<b>4</b>	No parts required	–	Remove the grass deflectors (if installed).
<b>5</b>	Basket rod	1	Install the basket rod.
	Basket plate	2	
	Flange screw (5/16 x 1/2 inch)	2	
	Hardened washer (5/16 inch)	1	
	Flange nut (5/16 inch)	1	
	Carriage bolt (3/8 x 1-3/4 inches)	2	
	Flange nut (3/8 inch)	2	



Procedure	Description	Qty.	Use
<b>6</b>	Groomer rod Bolt (M10 x 1-1/2 inch) Washer	1 1 2	Install the groomer rod kit (for units with groomers; ordered separately).
<b>7</b>	Basket assembly	1	Install the basket to a cutting unit.
<b>8</b>	No parts required	–	Adjust the basket position.

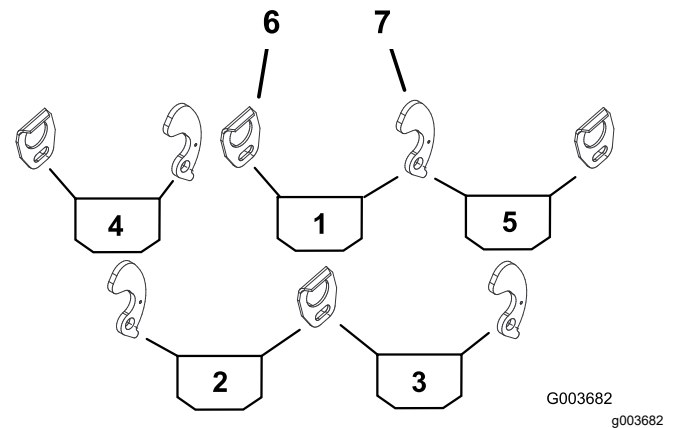
Toro part no.	Kit name	Fits	Quantity needed
03923	Flexible Grass Basket Kit	Rear 2 cutting units or all 5 cutting units	2 or 5
03924	Extended Flexible Grass Basket Kit	Front 3 cutting units <b>only</b>	3

# 1

## Installing the Basket Guides and Brackets

### Parts needed for this procedure:

1	Basket guide
1	Basket bracket
1	Screw (5/16 x 1/2 inch)
1	Roll pin
1	Left torsion spring (gold)
1	Right torsion spring (black)
1	Basket collar
2	Washer (3/8 x 7/8 inch)
2	Bolt (5/16 x 1-1/4 inches)
1	Plastic washer



**Figure 1**

- |                       |                        |
|-----------------------|------------------------|
| 1. Center basket      | 5. Right, front basket |
| 2. Left, rear basket  | 6. Basket guide        |
| 3. Right, rear basket | 7. Basket bracket      |
| 4. Left, front basket |                        |

## Procedure

- Remove the cutting units from the cartons. Assemble and adjust them per the *Operator's Manual* for the cutting unit.
- Use [Figure 1](#) to determine the locations for mounting the basket guides or basket brackets to the cutting-unit carrier frames.

- Mount a basket guide to the appropriate side of the carrier frame of each cutting unit (Figure 1) with a bolt (5/16 x 1/2 inch) and a flat washer (3/8 x 7/8 inch).

**Note:** Position the components as shown in Figure 2.

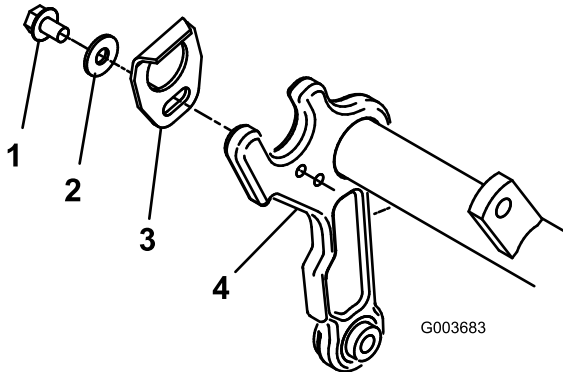


Figure 2

- |                                 |                  |
|---------------------------------|------------------|
| 1. Bolt (5/16 x 1/2 inch)       | 3. Basket guide  |
| 2. Flat washer (3/8 x 7/8 inch) | 4. Carrier frame |

- Install a roll pin into the lower hole in the appropriate side of the carrier frame of each cutting unit (Figure 3).

**Note:** The end of the roll pin should be flush with the inner side of the carrier frame.

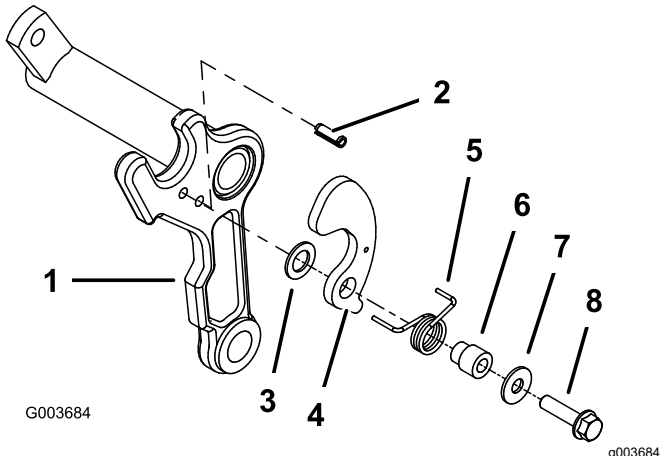


Figure 3

- |                   |  |
|-------------------|--|
| 1. Carrier frame  | 5. Torsion spring (left shown, gold color) |
| 2. Roll pin       | 6. Basket collar                           |
| 3. Plastic washer | 7. Flat washer (11/32 x 7/8 inch)          |
| 4. Basket bracket | 8. Bolt (5/16 x 1-1/4 inches)              |

- On the side of the carrier frame on which the roll pin is installed, mount a plastic washer, a basket bracket, a torsion spring, a basket collar,

a flat washer (11/32 x 7/8 inch), and a bolt (5/16 x 1-1/4 inches); refer to Figure 3.

**Note:** The **gold** torsion spring is for the **left** side of the carrier frame, and the **black** spring is for the **right** side of the carrier frame.

**Note:** Position the longer leg of the spring around the front of the carrier frame, and insert the shorter, rear leg of the spring into the hole in the basket bracket.

**Important:** Ensure that the plastic washer (item 3) is centered correctly on the basket collar (item 6) otherwise the bracket may not lock properly and may stick when rotated. If you install it correctly, the plastic washer rotates smoothly when you rotate the bracket back and forth.

## 2

## Installing the Spacers

Parts needed for this procedure:

2	Spacer
2	Flange locknut
2	Bolt (3/8 x 1-1/4 inches)

## Procedure

- On each side of the carrier frame, remove the existing bolt, nut, washer, and spacer (Figure 4).

**Note:** Retain the washer, but discard the bolt, the locknut, and the spacer.

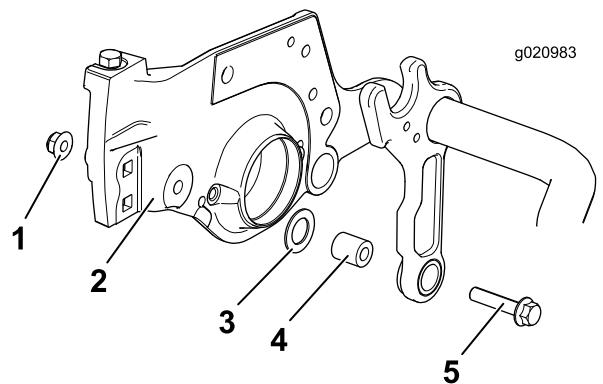
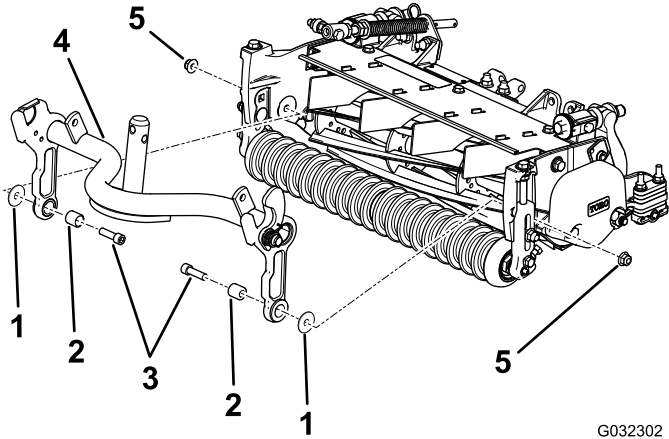


Figure 4

- |                             |                    |
|-----------------------------|--------------------|
| 1. Existing nut             | 4. Existing spacer |
| 2. Side plate               | 5. Existing bolt   |
| 3. Existing washer (retain) |                    |

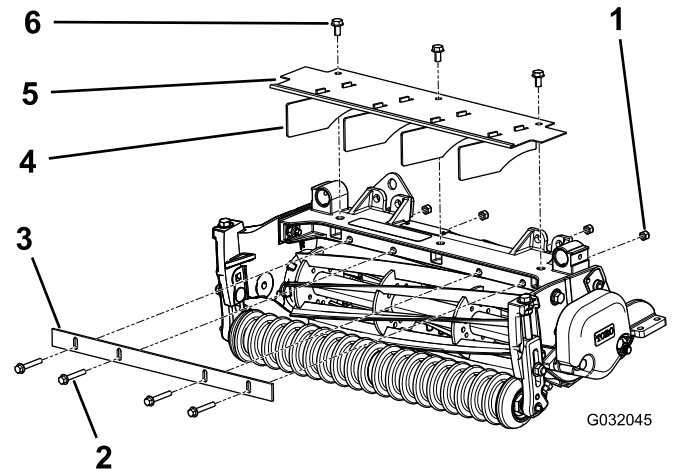
- In those same locations, install a bolt (3/8 x 1-1/4 inches), a new spacer, and the previously removed washer, and secure them using the nut provided in the kit ([Figure 5](#)).

**Note:** Ensure that the washer is between the frame and the side plate and positioned as it was originally.



**Figure 5**

- |                                |                              |
|--------------------------------|------------------------------|
| 1. Washer (previously removed) | 4. Carrier frame             |
| 2. Spacer                      | 5. Flange locknut (3/8 inch) |
| 3. Bolt (3/8 x 1-1/4 inches)   |                              |



**Figure 6**

- |                                 |                                   |
|---------------------------------|-----------------------------------|
| 1. Locknut, 1/4 inch (4)        | 4. Deflector (4)                  |
| 2. Bolt, 1/4 x 1-3/4 inches (4) | 5. Grass shield                   |
| 3. Cutoff bar                   | 6. Flange-head bolt, existing (3) |

# 3

## Installing the Cutoff Bar

Parts needed for this procedure:

1	Cutoff bar
4	Bolt (1/4 x 1-3/4 inches)
4	Locknut (1/4 inch)

### Procedure

- Loosely mount the cutoff bar to the frame of the cutting unit with 4 bolts (1/4 x 1-3/4 inches) and 4 locknuts (1/4 inch); refer to [Figure 6](#).
- Insert a 0.060 inch feeler gauge between the top of the reel and the bottom of the cutoff bar to check the clearance.

**Note:** Ensure that the bar and the reel are equal distance apart across the full length of the reel. The cutoff bar must not contact the reel during operation.

- Tighten the bolts and locknuts ([Figure 6](#)).

# 4

## Removing the Grass Deflectors

### If Installed

No Parts Required

### Procedure

- Remove the 3 flange-head bolts securing the grass shield to the frame of the cutting unit ([Figure 6](#)).
- Remove the deflectors from the shield.
- Install the grass shield.

# 5

## Installing the Basket Rod

### Cutting Units Without Groomers Only

Parts needed for this procedure:

1	Basket rod
2	Basket plate
2	Flange screw (5/16 x 1/2 inch)
1	Hardened washer (5/16 inch)
1	Flange nut (5/16 inch)
2	Carriage bolt (3/8 x 1-3/4 inches)
2	Flange nut (3/8 inch)

### Procedure

**Note:** If your cutting units have groomers installed, do not install the basket rods. Instead, order and install a groomer-rod kit for each cutting unit; refer to Installing the Groomer Rod Kit.

1. Mount a basket plate to each front height-of-cut bracket with a flange screw (5/16 x 1/2 inch), a carriage bolt (3/8 x 1-3/4 inches), and a flange nut (3/8 inch); refer to [Figure 7](#).

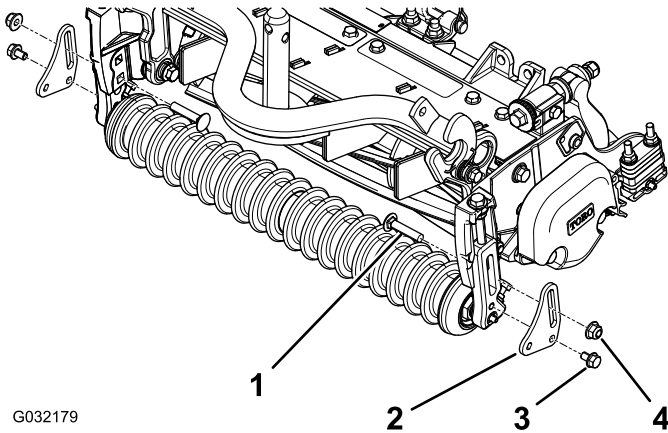


Figure 7

1. Carriage bolt, 3/8 x 1-3/4
2. Basket plate (2)
3. Flange screw, 5/16 x 1/2 inch (2)
4. Flange nut, 3/8 inch (2)

2. Insert the non-threaded end of the basket rod into the hole in a basket plate ([Figure 8](#)).

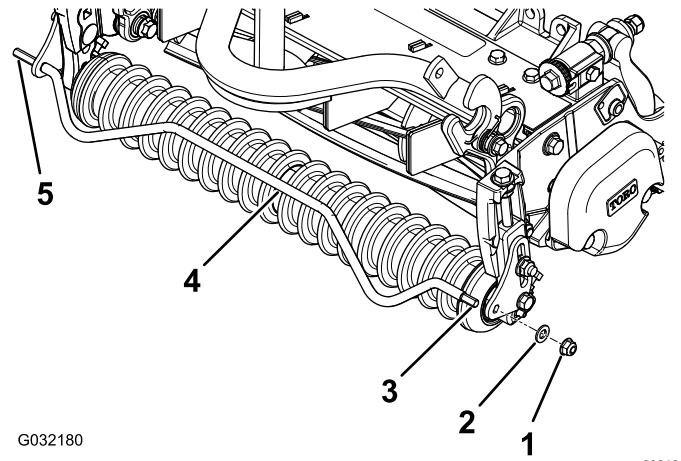


Figure 8

1. Flange nut (5/16 inch)
2. Hardened washer (5/16 inch)
3. Threaded end
4. Basket rod
5. Non-threaded end (inch)

3. Align the threaded end of the basket rod ([Figure 8](#)) with the hole in the other basket plate.
4. Insert the basket rod through the hole, and install a washer and a flange nut on the threaded end of the rod ([Figure 8](#)).

**Important:** Ensure that the basket rod does not touch the front roller.

# 6

## Installing the Groomer Rod Kit

### Units with Groomers Only, Ordered Separately

Parts needed for this procedure:

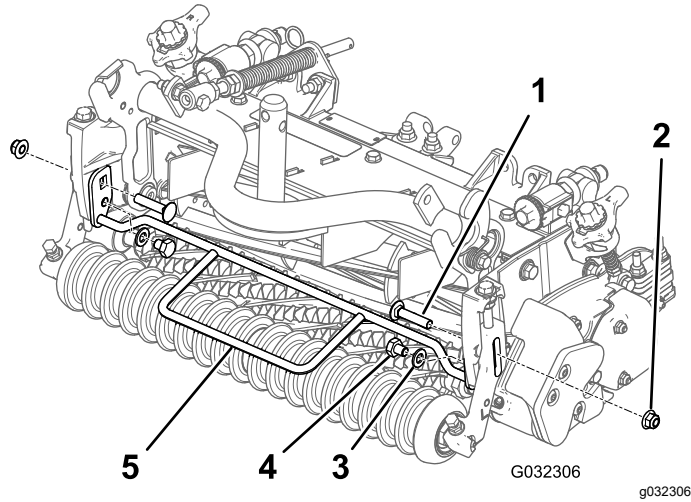
1	Groomer rod
1	Bolt (M10 x 1-1/2 inch)
2	Washer

### Procedure

**Note:** This procedure is for cutting units **with** groomers installed and replaces the items in Installing the Basket Rod.

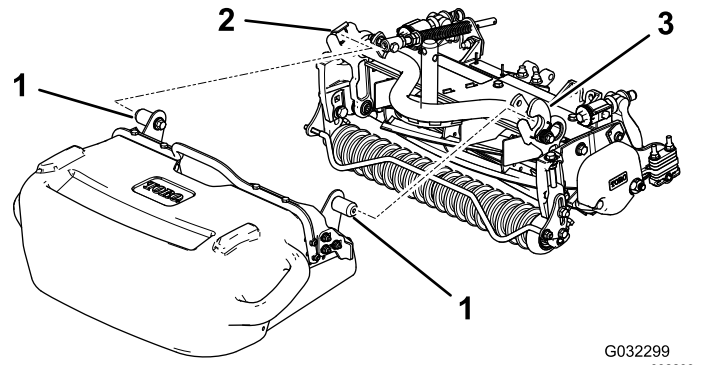
Order the Groomer Rod Kit (Toro Part 131-6823) is separately; contact an Authorized Toro Dealer to order the kit.

Install the kit as shown in [Figure 9](#).



**Figure 9**

- |                               |                                 |
|-------------------------------|---------------------------------|
| 1. Existing carriage bolt (2) | 4. Bolt, M10 x 1-1/2 inches (2) |
| 2. Existing flange nut (2)    | 5. Groomer rod                  |
| 3. Washer (2)                 |                                 |



**Figure 10**

- |                        |                 |                   |
|------------------------|-----------------|-------------------|
| 1. Basket mounting pin | 2. Basket guide | 3. Basket bracket |
|------------------------|-----------------|-------------------|

# 7

## Installing the Basket to a Cutting Unit

Parts needed for this procedure:

1	Basket assembly
---	-----------------

### Installing the Basket to a Front Cutting Unit

**Note:** You can use the standard baskets (Model 03923) on the front and rear cutting units. You can use the extended baskets (Model 03924) on the front cutting units only.

Mount the basket to the carrier frame of a cutting unit by inserting the basket mounting pin into the basket guide and pressing the opposite mounting pin into the basket bracket ([Figure 10](#)).

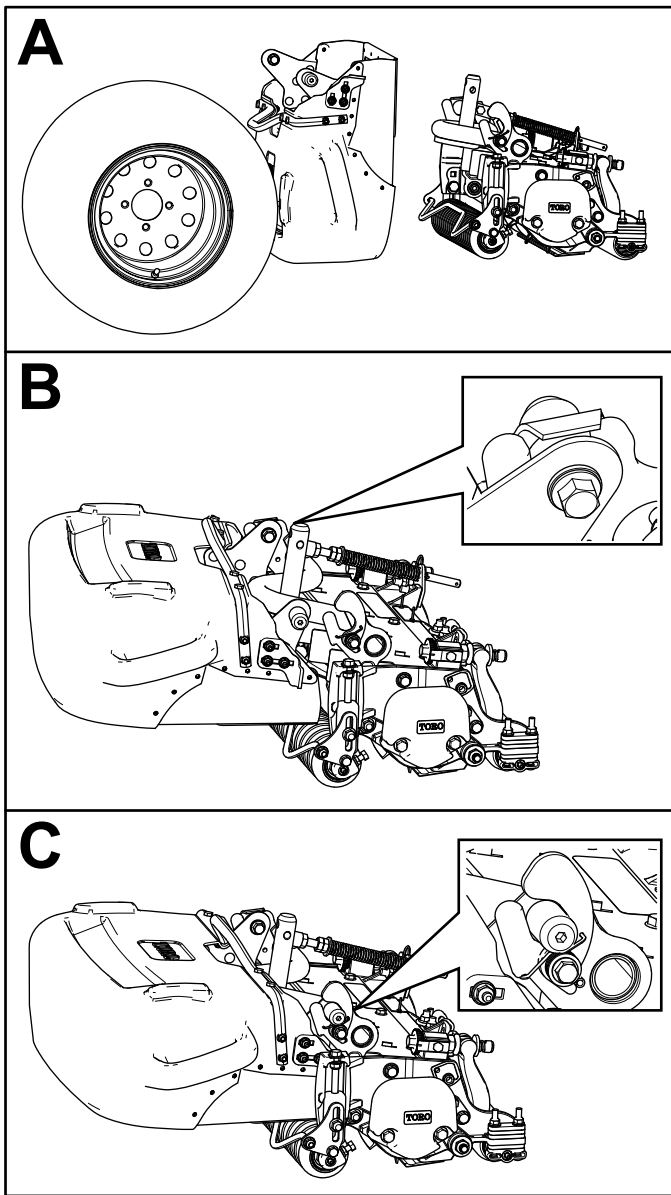
### Installing the Basket to a Rear Cutting Unit

**Note:** You can use the standard baskets (Model 03923) on the front and rear cutting units. You can use the extended baskets (Model 03924) on the front cutting units only.

- Slide the basket vertically under the machine with the open end of the basket facing upward just past the inside of the tire ([Figure 11A](#)).
- Insert the basket mounting pin into the basket guide ([Figure 11B](#)).
- Rotate the back side of the basket upward so that the inside basket stop on the basket is in front of the carrier frame stop.
- Press the opposite mounting pin into the basket bracket ([Figure 11C](#)).

Remove the baskets from the rear cutting units as follows:

- Remove the basket mounting pin from the basket bracket by moving the mounting pin up and slightly back ([Figure 11C](#)).
- Pull the basket slightly toward you to remove the inside basket mounting pin from basket guide on the cutting unit ([Figure 11B](#)).
- Rotate the back of the basket down and move the basket inward toward the center of the machine.
- Pull the basket out from under the machine.

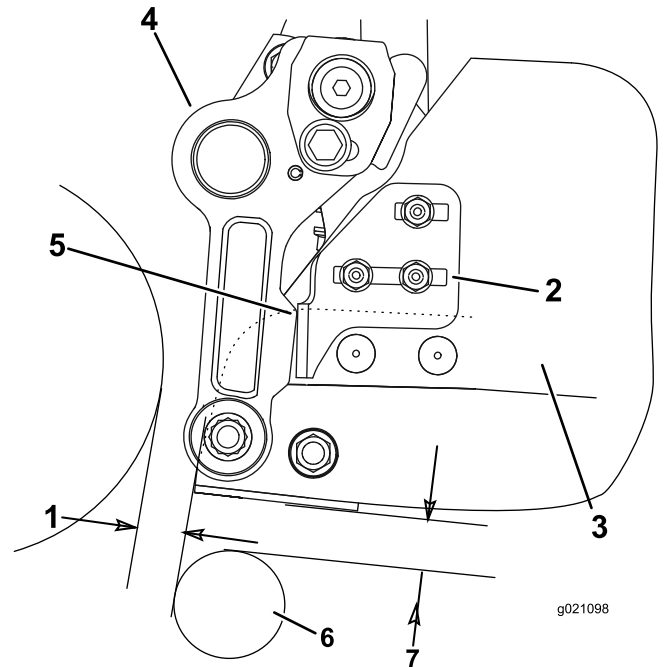


G032300  
g032300

Figure 11

the reel, and a minimum clearance of 6 mm (1/4 inch) between the front roller and the bottom of the basket. To adjust the basket position, proceed as follows:

- On each side of the basket, loosen the nuts on the carriage bolts securing the basket-stop brackets to the basket (Figure 12).
- Position the basket so that it is parallel to the cutting unit with a minimum clearance of 6 mm (1/4 inch) between the lip of the basket and the reel (Figure 12).
- On each side of the basket, adjust the basket-stop brackets so that they each contact a carrier-frame arm.
- Tighten the nuts on the carriage bolts to secure the basket position.



g021098

Figure 12

g021098

- |                              |                              |
|------------------------------|------------------------------|
| 1. 6 mm (1/4 inch) clearance | 5. Contact point             |
| 2. Basket-stop bracket       | 6. Roller                    |
| 3. Basket                    | 7. 6 mm (1/4 inch) clearance |
| 4. Carrier-frame arm         |                              |

# 8

## Adjusting the Basket Position

No Parts Required

### Procedure

Make sure that the basket is parallel to the cutting unit or slightly raised in front with a minimum clearance of 6 mm (1/4 inch) between the lip of the basket and



**Count on it.**