



MODEL NO. 41355 & 41360
200000101 CE and up

SET-UP AND PARTS
MANUAL

ENCLOSED BOOM

for the MULTI PRO® 1200, 1250, 5500 and WORKMAN® VEHICLES

Refer to illustrated Parts List for details of parts used in assembling the ENCLOSED BOOM for use on the MULTI-PRO® 1200, 1250, 5500 and WORKMAN®.

NOTE: When installing the ENCLOSED BOOM on the MULTI-PRO® 1200, 1250, 5500 and WORKMAN® the instructions in this manual replace the "SPRAY SYSTEM" or "BOOM FRAME ASSEMBLY:"* section in the SET-UP & PARTS MANUAL for the following:

- MULTI PRO 1200 TURF SPRAYER
- MULTI PRO 1250 TURF SPRAYER
- PRO-CONTROL™ SPRAY SYSTEM FOR THE MULTI-PRO® 5500 VEHICLE
- MANUAL VALVE SPRAY SYSTEM FOR THE MULTI-PRO® 5500 VEHICLE
- STANDARD ELECTRIC SPRAY SYSTEM 1000 FOR THE MULTI-PRO® 5500 VEHICLE
- MANUAL SPRAY SYSTEM FOR THE WORKMAN® VEHICLE
*Instruction steps #40 through #54
- PRO-CONTROL™ SPRAY SYSTEM FOR THE WORKMAN® VEHICLE
*Instruction steps #41 through #55

NOTE: "Right", "Left", "Front" and "Rear" are referenced while seated in the operator's position

Also refer to the applicable spray system SET-UP AND PARTS MANUAL for Control Valve installation and other Sprayer Assembly requirements.



WARNING

- This attachment may cause the overall gross vehicle weight to be exceeded when used in combination with other attachments

Exceeding the gross vehicle weight can cause injury or death due to reduced handling, braking and stability.

Always reduce payload to maintain vehicle weight within gross vehicle weight rating.

See OPERATORS MANUAL for additional information.

BOOM FRAME ASSEMBLY:

The Boom Frame Assembly instructions for the MULTI-PRO® 1200/1250/5500 and WORKMAN® are described separately because of their differences. Follow the applicable directions for your installation.

NOTE: Wherever "grease" is referred to in this manual use a No. 2 General Purpose Lithium Base Grease.

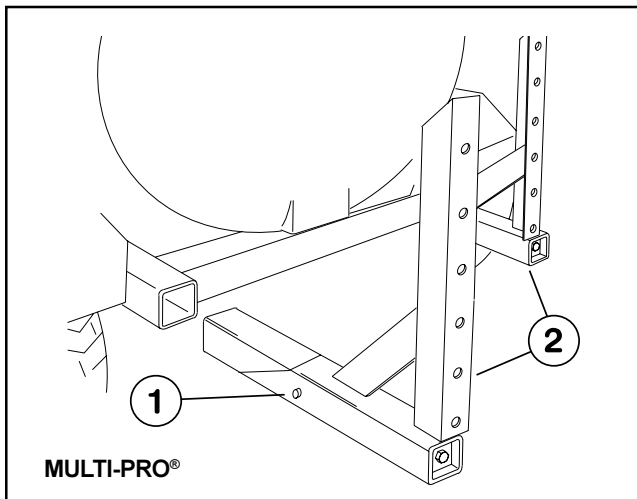
MULTI-PRO® 1200/1250 & 5500 BOOM FRAME ASSEMBLY:

MULTI-PRO® 1200/1250

1. Remove Stop Pins in Boom Mount Assemblies. Apply a heavy coating of grease to the tubes of the two Boom Mount Assemblies and insert them into the Vehicle Frame until Angle Gusset bottoms out against Vehicle Frame. (See FIG. 1)

MULTI-PRO® 5500

1. Apply a heavy coating of grease to the tubes of the two Boom Mount Assemblies and insert them into the Vehicle Frame, as shown in FIG. 1, until the Stop Pins hit the frame tube.



MULTI-PRO®

FIG. 1

- 1. Stop Pin
- 2. Boom Mount Assemblies

NOTE: Note the position of the angle member of the Right and Left Boom Mount Assemblies in relation to the tube member. They must be positioned as shown for the mounting of the Cross Support Angle.

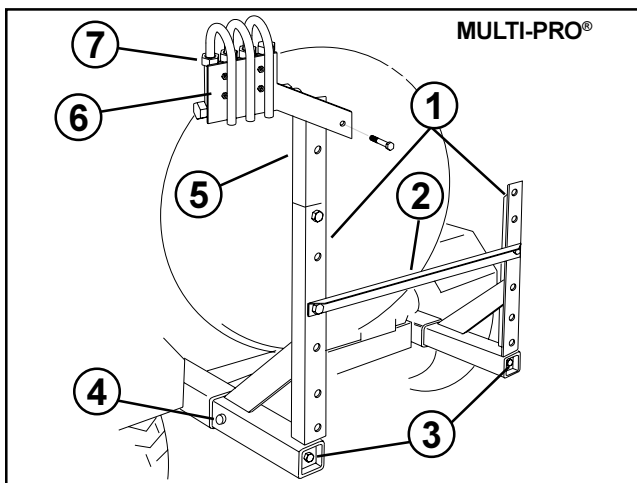


FIG. 2

- 1. Boom Mount Asm.
- 2. Cross Support Angle
- 3. Wedge Screws
- 4. Stop Pin
- 5. Flow Monitor Mount Extender Bracket
- 6. Flow Monitor Mount
- 7. Flow Monitor

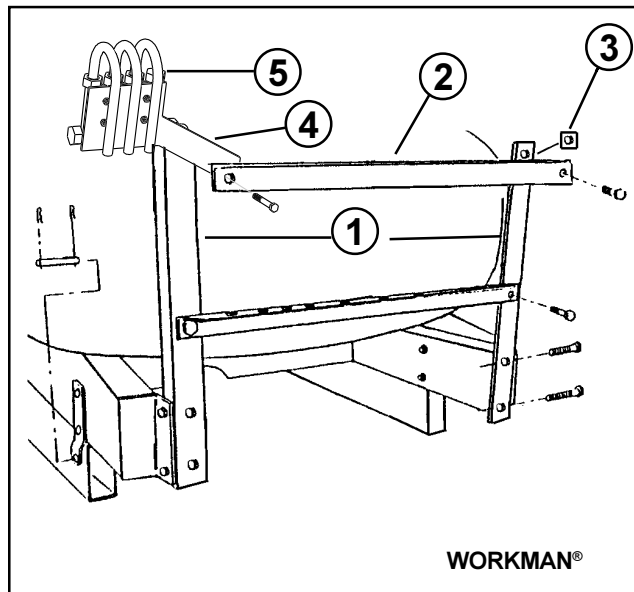
2. Assemble Flow Monitor and Flow Monitor Backing Plate onto the Flow Monitor Mount using (4) 1/4" x 2" hex hd. cap screws and lock nuts. FIG. 2.

3. Assemble the Cross Support Angle, Flow Monitor Mount and Flow Monitor Mount Extender Bracket onto the Boom Mount Assemblies with (3) 1/2" x 1-1/4 hex hd. cap screws and lock nuts as per FIG. 2.

4. Using a torque wrench, tighten the (2) 1/2" x 18" screws that join the Wedge Tubes to the Boom Mounts. Tighten to 50 ft. lbs.

WORKMAN® SPRAY SYSTEM BOOM FRAME ASSEMBLY:

1. Attach the two Boom Mounting Angles onto the rear of the Tank Saddle Extensions using (4) 1/2" x 1-1/4" hex hd. cap screws and lock nuts as shown in FIG. 3.



WORKMAN®

FIG. 3

- 1. Boom Mounting Angles
- 2. Upper Cross Support & Angle
- 3. Spacer
- 4. Flow Monitor Mount
- 5. Flow Monitor

2. Assemble Flow Monitor and Flow Monitor Backing Plate onto the Flow Monitor Mount using (4) 1/4" x 2" hex hd. cap screws and lock nuts. FIG. 3.

3. Assemble the Upper Cross Support Angle, Flow Monitor Mount and Spacer onto the Boom Mount Assemblies with (2) 1/2" x 1-1/4 hex hd. cap screws and lock nuts as per FIG. 3.

4. Assemble the Lower Cross Support Angle onto the Boom Mounting Angles using (2) 1/2" x 1-1/4" hex hd. cap screws and lock nuts.

CENTER BOOM MOUNT ASSEMBLY:

1. Assemble Boom Mount onto the Center Boom as per FIG. 4 using the (6) 1/2" x 3" hex hd. cap screws and lock nuts. FIG. 4a.

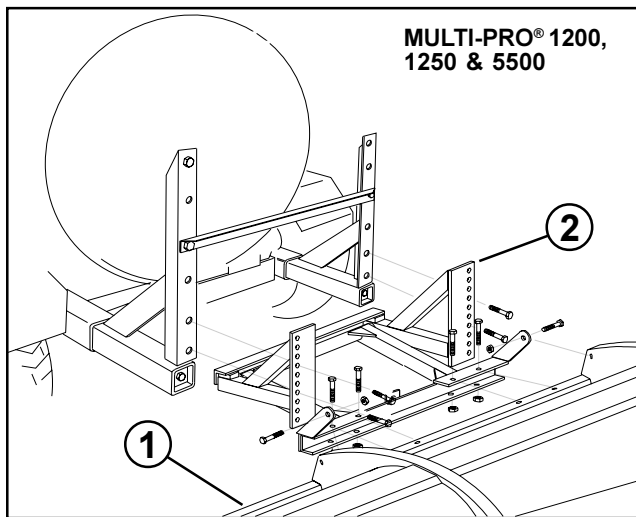


FIG. 4a

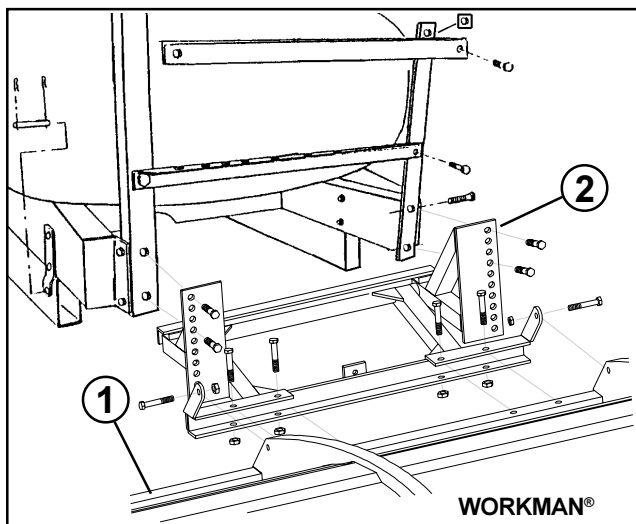


FIG. 4b

1. Boom Center Section 2. Mount Assembly

2. Assemble the (2) straight Castor Mounts into Center Boom section, using (4) 1/2" x 3" carriage hd. bolts and lock nuts, ensuring that bolt heads are on the "hood opening" side. Assemble (2) Wheels onto (2) Castor Forks with the long shafts using (2) 3/4" O.D. x 6" bushings and (2) 1/2" x 7-1/2" hex hd. cap screws. Assemble Castor Forks onto Castor Arms using a spring and cotter pin on each castor. (Refer to Page 14)

3. The Boom Mount has several holes to accommodate different sprayers. To determine the correct mounting holes to use, ensure that the Center Boom and the sprayer are on a level surface approximately as the Boom will be attached. Block up the Center Boom Section so that the appropriate holes align.

The holes used to attach the Boom Mount to the Boom Mount Assemblies should be as follows:

MULTI-PRO® 1200/1250 - Align the inner holes of the Boom Mount with the matching holes on the Boom Mount Assemblies. Secure with (4) 1/2" x 1-1/4" hex hd. cap screws and lock nuts. (FIG. 4a)

MULTI-PRO® 5500 - Align the bottom holes in Boom Mount Assemblies with the fourth and seventh holes from the bottom on the Boom Mount. Secure with (4) 1/2" x 1-1/4" hex hd. cap screws and lock nuts. (FIG. 4a)

WORKMAN® SPRAY SYSTEM - Align the bottom hole in Boom Mount Angles with the seventh and tenth holes from the bottom on the Boom Mount. Secure with (4) 1/2" x 1-1/4" hex hd. cap screws and lock nuts. (FIG. 4b)

NOTE: When set up the Boom should be level from front to back when the sprayer has half a tank of water. If the Boom is not level the Boom Mount should be moved up accordingly.

BOOM EXTENSION ASSEMBLY:

1. Layout the Left and Right Boom Extensions behind the sprayer approximately as the boom will be when assembled.

2. Assemble (2) curved Castor Mounts into Right and Left Boom Extensions using (2) 1/2" x 3" carriage hd. bolts and lock nuts per arm, ensuring that bolt heads are on the "hood opening" side. Assemble (2) Wheels onto (2) Castor Forks with the short shafts using 3/4" O.D. x 6" bushings and 1/2" x 7-1/2" hex hd. cap screws. Assemble Castor Forks onto Castor Arms using 3/16" x 1-1/2" cotter pins. (Refer to Page 14)

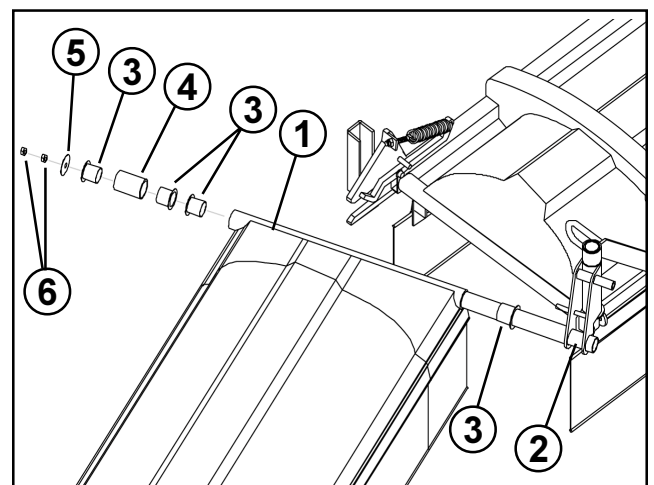


FIG. 5

- 1. Extension Boom
- 2. Pivot Joint
- 3. Bushing
- 4. Breakaway Retainer Collar
- 5. Pivot Retainer Washer
- 6. Jam Nut

3. Lightly grease Right and Left Boom horizontal pivots where bushings will rotate. Assemble Right and Left Booms onto Boom Center Section / Horizontal Pivot Joint as per FIG. 5 ensuring that bushings are properly seated. Torque the wing retainer jam nut to 15 ft. lbs and lock with second jam nut.

4. Assemble (2) Anti-scalp Castors onto back outer mount on Right and Left Booms using (2) 7/16" lock nuts.

BOOM EXTENSION FEED HOSE ROUTING:



CAUTION

- Use proper lifting procedures when lifting the Extension Boom into the forward fold position.
- Failure to follow proper lifting procedures could result in personal injury.
- Follow the Forward Fold Instructions Decal located near the end of the Boom Extension.
- Also read and understand the instructions in the OPERATORS MANUAL.

1. Fold the Right and Left Boom Extensions forward following the Boom Forward Fold Instruction Decal located near the ends of the Boom Extensions. Also refer to the Forward Fold Instructions in OPERATORS MANUAL.

2. Route Right and Left Boom Feed Hoses as shown in FIG. 6 through ring at wing pivot joint and through Boom Center Section (FIG. 7) ensuring that there is adequate hose length at the Boom Extension Pivot Joint so that the hose is not stretched.

3. Unfold the booms and insert into Breakaway Latches to put in field position.

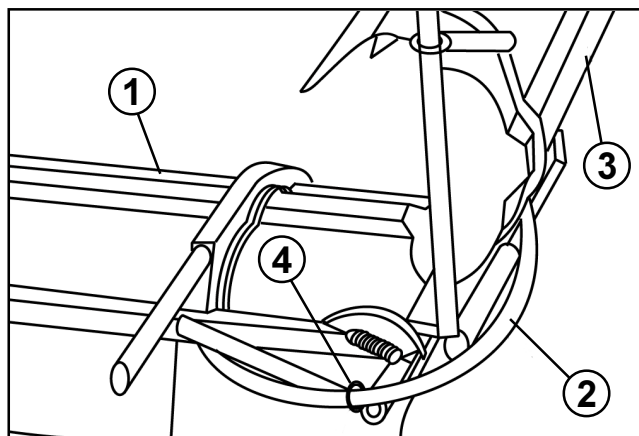


FIG 6

1. Boom Center Section 3. Boom Extension
2. Extension Boom Feed Hose 4. Retainer Ring

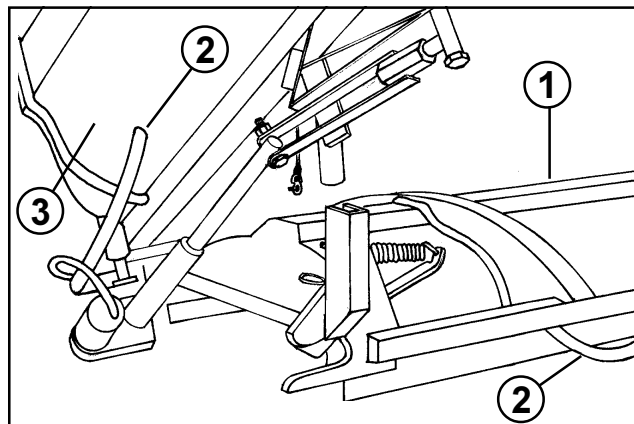


FIG 7

1. Boom Center Section 3. Boom Extension
2. Boom Extension Feed Hose

HOSE CONNECTIONS:



CAUTION

Chemicals are hazardous and can cause personal injury!

- **Securely tighten all sprayer hose clamp connections during initial set-up to prevent leaks and hose blow-offs while spraying system is in operation.**

NOTE: When installing on the WORKMAN®, the Flow Monitor Extender bracket is not used and the center boom feed hoses from flow monitor can be trimmed 17"

1. Connect the 3 hoses for the Center Boom to the Center Flow Monitor through hose retainer clamp (not available on booms with serial #'s below 90160) on mounting bracket so that the monitor indicators correspond to the Spray Nozzles on the Center Boom (i.e. left nozzle on left flow indicator, etc.).

2. Leaving a gentle loop in hoses, to relieve stress from the hose / flow monitor connection and hose restriction, secure hoses with Retainer Clamp or tie hoses together and secure to lower part of Flow Monitor Mount.

NOTE: The Boom Control Valves must be installed on the sprayer before the rest of the hose connection step can be completed.

The Boom hose connection will depend on the type of Control Valve system used on the Sprayer. Refer to the applicable **SPRAY SYSTEM SET-UP AND PARTS MANUAL** for the Control Valve installation.

SPRAYERS WITH ELECTRIC SOLENOID CONTROL VALVE SYSTEM:

1. Connect the 34" length of 3/4" Hose included with the Boom to the inlet on the Center Boom Flow Monitor and the other end to the outlet on the center Solenoid Valve. Secure with Hose Clamps.

2. Connect the Boom Feed Hoses for the Left and Right Boom Extensions to the outlets on the Solenoid Control Valves so that the Boom Feed Hoses supply the corresponding boom sections controlled by the Boom Control Switches / Solenoid Control Valves. Secure with Hose Clamps.

SPRAYERS WITH MANUAL CONTROL VALVE SYSTEM:

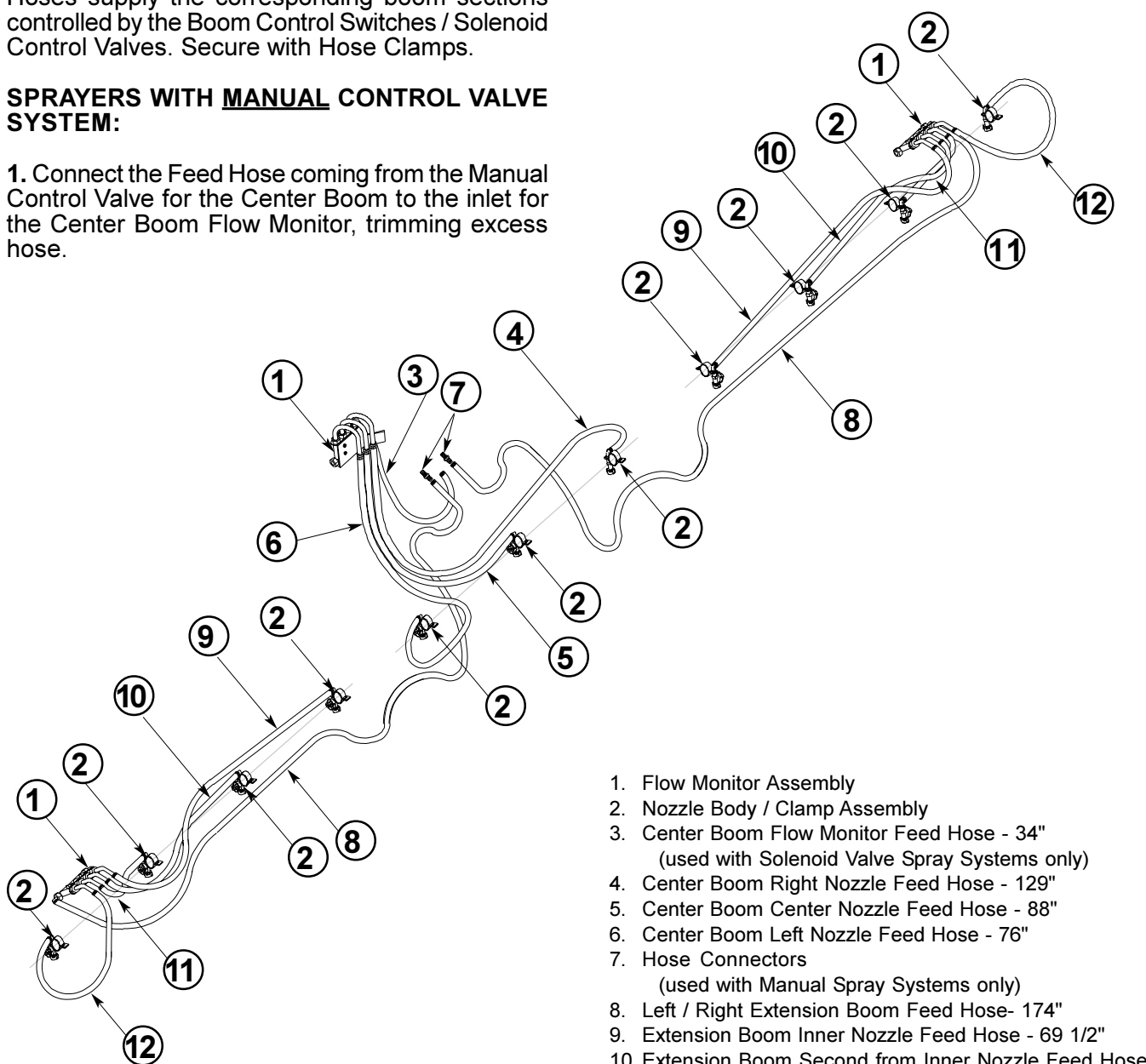
1. Connect the Feed Hose coming from the Manual Control Valve for the Center Boom to the inlet for the Center Boom Flow Monitor, trimming excess hose.

2. Insert the (2) 3/4" Hose Connectors supplied with the Boom into the Feed Hoses coming from the Left and Right Booms. Secure with Hose Clamps. Connect the Hoses coming from the Left and Right Boom Control Valves to the Hose Connectors, trimming excess hose, but allowing enough hose length for boom movement. Secure with Hose Clamps.

NOTE: If Flow Monitors are equipped with Swivel Nuts they should be tightened at this time. Be careful not to overtighten.

WIRING HARNESS INSTALLATION:

PLUMBING DIAGRAM



- 1. Flow Monitor Assembly
- 2. Nozzle Body / Clamp Assembly
- 3. Center Boom Flow Monitor Feed Hose - 34"
(used with Solenoid Valve Spray Systems only)
- 4. Center Boom Right Nozzle Feed Hose - 129"
- 5. Center Boom Center Nozzle Feed Hose - 88"
- 6. Center Boom Left Nozzle Feed Hose - 76"
- 7. Hose Connectors
(used with Manual Spray Systems only)
- 8. Left / Right Extension Boom Feed Hose - 174"
- 9. Extension Boom Inner Nozzle Feed Hose - 69 1/2"
- 10. Extension Boom Second from Inner Nozzle Feed Hose - 49 1/2"
- 11. Extension Boom Second from Outer Nozzle Feed Hose - 31"
- 12. Extension Boom Outer Nozzle Feed Hose - 42"

The Wiring Harness Installation will depend on the Vehicle and type of Sprayer. Refer to the applicable installation instructions.

MULTI-PRO® 5500 WIRING HARNESS INSTALLATION:

1. Remove the Panel Assembly from the Center Console Assembly. See FIG. 8.

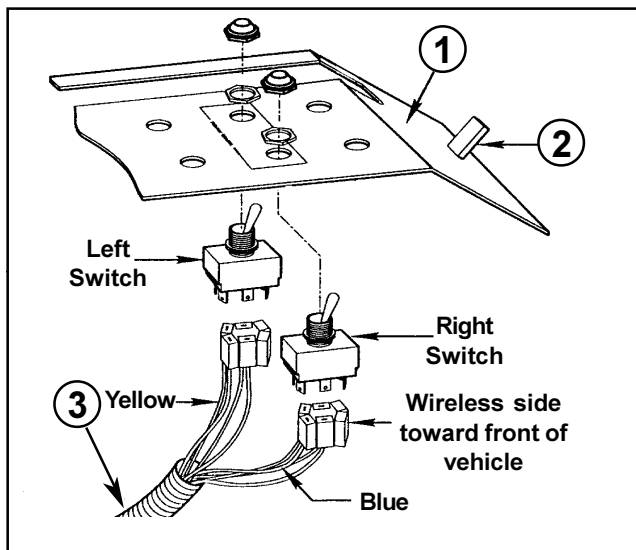


FIG 8

- 1. Panel Assembly
- 2. Latch
- 3. Wire Harness

2. Remove Boom Lift Switch hole plugs. Connect the harness connectors to the Switches as shown in the **WIRING DIAGRAM**. Install the Switches into the Switch Panel Assembly. Install the protective rubber Boots (5500 only).

3. Connect the spade terminal on the black wire of Wiring Harness to the Ground Terminal Block located in the engine compartment. Connect the red wire female spade terminal of Wiring Harness to the to male terminal on the Power Wire Extension. Connect the Power Wire Extension ring terminal to the accessory solenoid.

4. Route the Wiring Harness to the rear of the Vehicle along the right side of the main frame, following the main wiring harness through the cable rings.

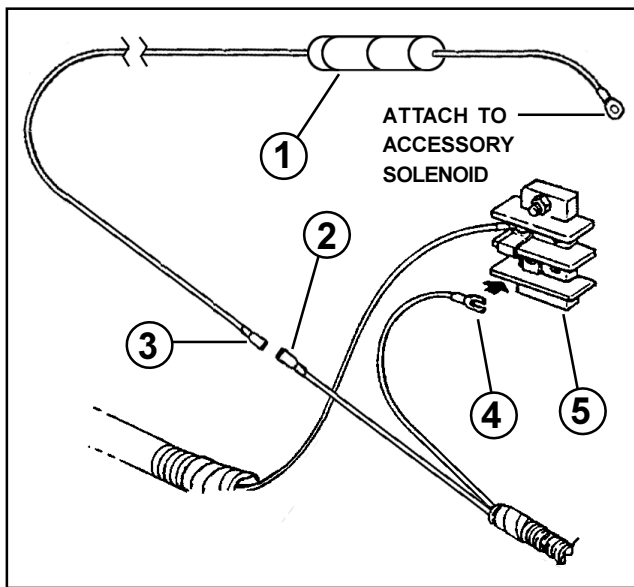
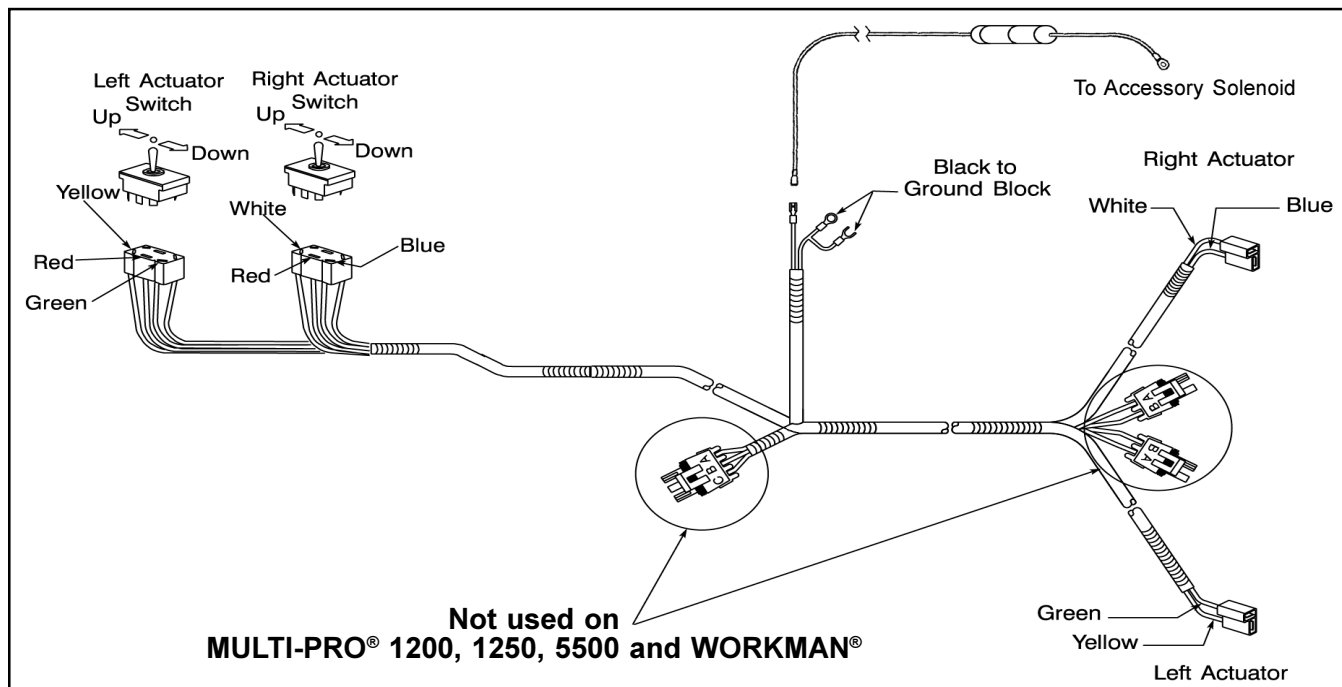


FIG 9

- 1. Fuse - 30 Amp Slow Blow
- 2. Wiring Harness - Red Wire
- 3. Power Wire - Extension
- 4. Wiring Harness - Black Wire
- 5. Ground Terminal Block

WIRING DIAGRAM



5. From the back of the Vehicle, route the leads for the Right and Left Booms along the Boom Feed Hoses and out to where the actuators will be located.

WORKMAN® WIRING HARNESS INSTALLATION WITH THE WORKMAN® SPRAY SYSTEM:

1. Raise the Tank and Skid Assembly and support with the Strut Support Rod.

2. Remove the (4) 3/8" x 1" hex hd. cap screws and (2) nuts securing the Radiator cover to the Vehicle Frame and remove Radiator Cover.

3. Unplug the Wire Harness Connectors from both Headlights.

4. Remove (15) screws and washers securing Front Hood to Vehicle Frame and remove Hood.

5. Affix SPRAY BOOM CONTROL Decal around lower left holes of Switch Bracket as per FIG. 10.

6. Install the Switches in the lower left holes of the Switch Bracket, using the nuts included with the Switches. Install the protective rubber Boots.

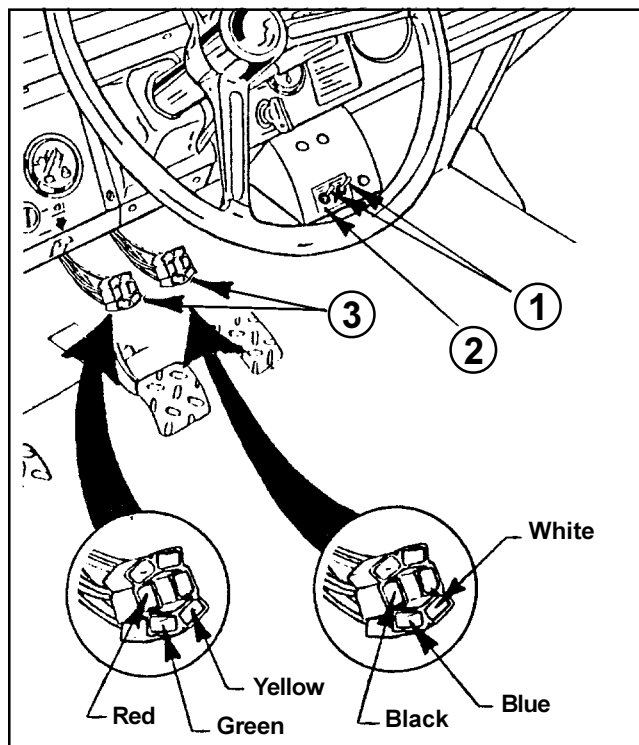


FIG. 10

- 1. Switches
- 2. Decal
- 3. Connectors

7. Plug the (2) connectors for the Actuators onto the (2) Switches.

8. Route the Wiring Harness through the opening in the floorboard and along the left side of the Vehicle's Main Frame to the rear of the vehicle.

9. From the back of the Vehicle, route the leads for the Right and Left Boom Extensions along the Boom Feed Hoses and out to where the actuators will be located.

10. Connect the Red Wire Female Spade Terminal of Wiring Harness to the to Male Terminal on the Power Wire Extension. Connect the Power Wire Extension Ring Terminal to the starter solenoid located on left side of engine. See FIG. 9.

11. Remove cap screw and nut securing Vehicle Ground Wires to Frame. Re-secure, adding black Ground Wire from Wiring Harness with cap screw and nut previously removed.

NOTE: It may be necessary to leave the Hood off to mount other accessories. If so, do not complete steps 13-14 until all other accessories are installed.

12. Reinstall Hood using (15) screws and washers removed earlier.

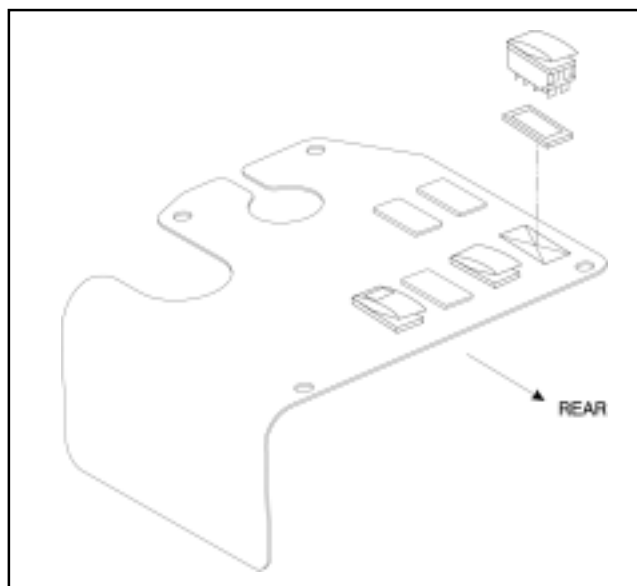
13. Reconnect the Wire Harness connectors to both Headlights.

14. Secure Wiring Harness to the Vehicle Frame.

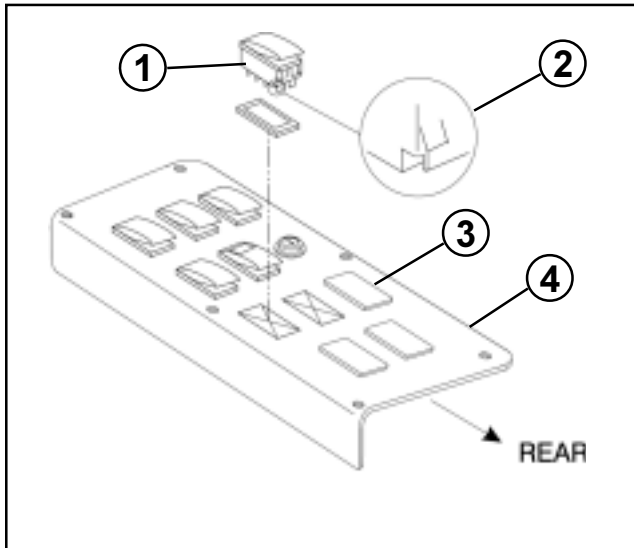
15. Reinstall the (4) 3/8" x 1" hex hd. cap screws and (2) nuts securing the Radiator cover to the Vehicle Frame and remove Radiator Cover.

MULTI-PRO® 1200 & 1250 WIRING HARNESS INSTALLATION:

1. Remove the screws and lift the Spray Control Panel to expose the bottom side. See FIG. 11a or 11b.



MP1200 FIG. 11a



MP1250 FIG. 11b

- | | |
|--------------------|------------------------|
| 1. Rocker Switch | 3. Plug |
| 2. Notch (at back) | 4. Spray Control Panel |

2. Lift and remove the two plugs from the Spray Control Panel on the vehicle and install the two Rocker Switches provided in their place. Insure their orientation matches the orientation in Fig. 11a or 11b with the notch to the rear of the Vehicle. This notch indicates the end of the switch to which the locking Arm will mate.

3. Using the Harness Extension, plug the 1/4" spade Terminal into the main Boom Lift Harness Plug Connector. Plug the Red and Black Wires into the center sockets. Insert the Green and White Wire into the corner socket with the Green or White wire. Plug the Remaining Yellow and Blue wire into the other corner socket, (this socket will have a Blue

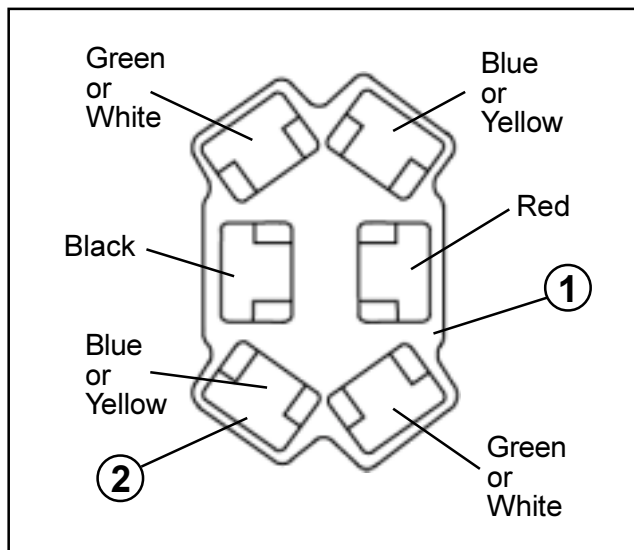


FIG. 12

1. Connector
2. Socket

or Yellow wire). Repeat this step for the other Plug. Connect the Connector Housing to their respective switches in Spray Control Panel (Yellow/Green to L.H. Switch & Blue/White to R. H. Switch). See FIG. 12.

4. Reinstall the Spray Control Panel to the Seat Base and secure with the screws removed earlier.

5. Route the Wiring Harness to the rear of the Vehicle along the right side of the main frame.

6. From the back of the Vehicle, route the leads for the Right and Left Booms along the Boom Feed Hoses and out to where the actuators will be located.

7. Route the Power Wire to the accessory solenoid and Ground Wire to the Ground Terminal Block.

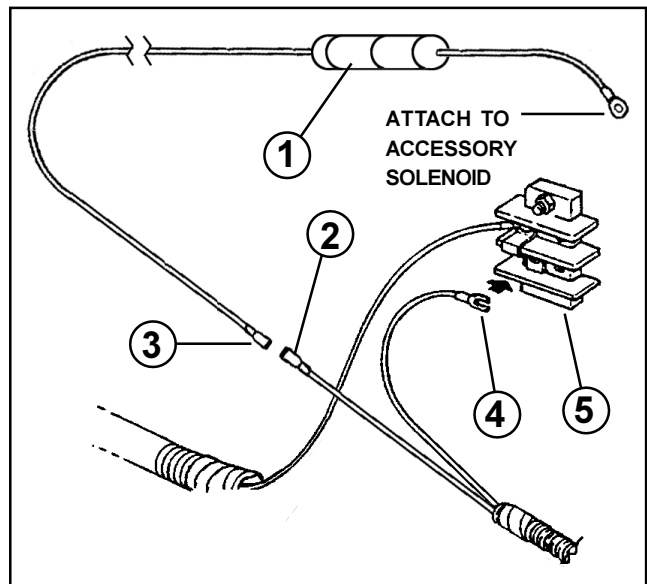


FIG. 13

- | | |
|------------------------------|--------------------------------|
| 1. Fuse - 30 Amp Slow Blow | 4. Wiring Harness - Black Wire |
| 2. Wiring Harness - Red Wire | 5. Ground Terminal Block |
| 3. Power Wire - Extension | |

8. Connect the spade terminal on the black wire of Wiring Harness to the Ground Terminal Block located in the engine compartment. Connect the red wire female spade terminal of Wiring Harness to the to male terminal on the Power Wire Extension. Connect the Power Wire Extension ring terminal to the accessory solenoid.

ELECTRIC BOOM EXTENSION LIFTS:

1. Assemble the Boom Extension Electric Lift Adjustment Links onto the Right and Left Boom Extensions using 1/2" x 8 1/2" hex hd. cap screws and locknuts. Assemble Electric Actuators onto the Boom Extension Breakaway Pivots using the 1/2" x 5" hex hd. cap screws and locknuts. Connect the other end of the Actuator to the Actuator Adjustment Link using the 1/2" x 2" hex hd. cap screws and lock nuts. FIG 14.

NOTE: The locknuts should only be tight enough to retain the cap screws, allowing the Actuator and Actuator Adjustment Link to pivot freely.

Ensure that the Actuator Drive Motors are on top.

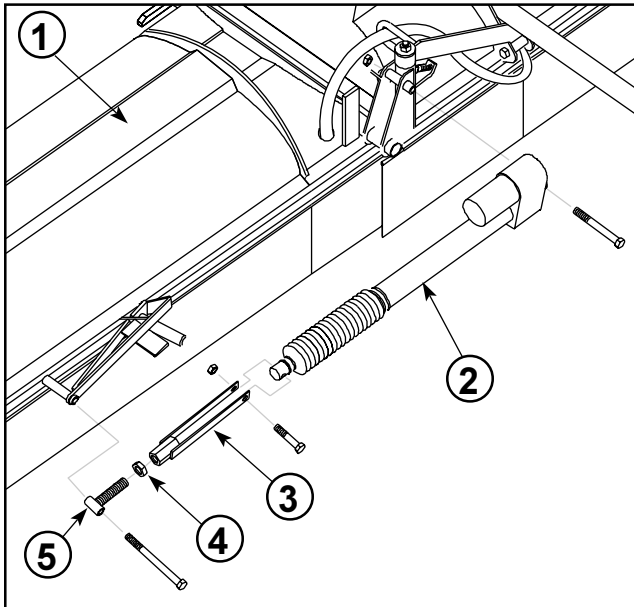


FIG 14

- | | |
|-----------------------------------|--------------------------|
| 1. Boom Extension
(Left Shown) | 4. Jam Nut |
| 2. Actuator | 5. Actuator Adjustment T |
| 3. Actuator Adjustment Link | |

2. Make a trial connection by plugging single terminals into the Actuator Plug, to check the up and down motion and the right and left control at the Boom Switches.

3. When all connections are correct, disconnect the terminals and slide them into the corresponding slots of the plastic connectors and connect to Actuator Plugs.

4. Apply silicone sealer at connection and on the back side of all Actuator plugs at wire entry.

IMPORTANT: The Electric Boom Extension Lifts must be properly adjusted to operate correctly. Improper adjustment could damage the Boom.



CAUTION

- The adjustment of the Electric Boom Extension Lifts requires that the Actuator be separated from the Actuator Adjustment Link which leaves the Boom Extension unsupported.
- An unsupported Boom Extension could fall and cause personal injury or death.
- Use additional support for the Boom Extension when adjusting the Electric Boom Extension Actuator.
- It is recommended that the Boom Extension Electric Lift adjustments be done with two people.

5. Use the Up/Down switches to raise the Boom to the upright position until the Stop on the front corner of the Boom Extension just makes contact with the contact pad on the Center Boom.

6. Measure the length of the Actuator and Adjustment Link. It should be $30\text{-}1/8'' \pm 1/16''$ from the center of the Actuator Bolt to the center of the Adjustment Link Bolt. (FIG. 15)

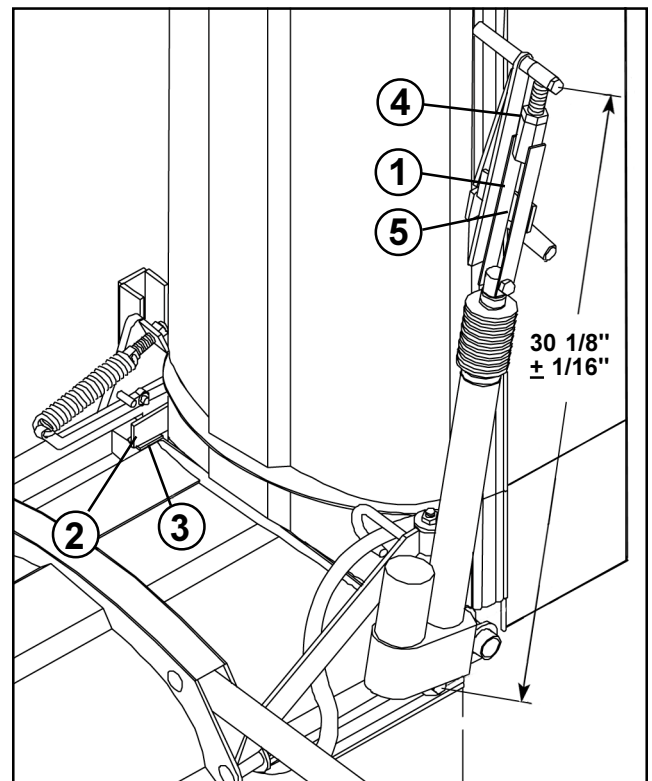


FIG 15

- | | |
|-----------------------------|-----------------------|
| 1. Actuator Adjustment Link | 4. Jam Nut |
| 2. Stop | 5. Actuator Link Stop |
| 3. Contact Pad | |

7. If the measurement is incorrect, remove the hex hd screw that attaches the Actuator Adjustment Link to the Actuator, loosen the Jam Nut and rotate the Adjustment Link to change the length to the specification. Replace the hex hd screw and nut ensuring that the Adjustment Link can pivot freely. Retighten the Jam Nut, ensuring that the Link rests squarely on the Actuator Link Stop in the raised position.

NOTE: If the Actuator has less than the above specification this will bend the frame of the Extension Boom when the Actuator is fully contracted. More than specification will cause excessive movement during vertical transport.

FOAM MARKER OPTION:

Follow the instructions included with the **FOAM MARKER KIT** *except for the applicable steps as follows:*

1. Drill a 3/8" hole in the plastic shroud 1" over from the Boom Extension Feed Hose on each Boom Extension. Fig. 16

NOTE: Remove silicone plug from nozzle tube if present.

2. Route Foam Marker hose through Nozzle Tube on each Boom Extension.

3. Install Punched Hole Boom Caps to Nozzle Tubes

4. Connect Foam Marker Boom Feed Hoses coming from Compressor to the Boom Hoses using 1/4" - 3/8" Hose Connectors and Hose Clamps supplied with the **ENCLOSED BOOM MOUNTING KIT**.

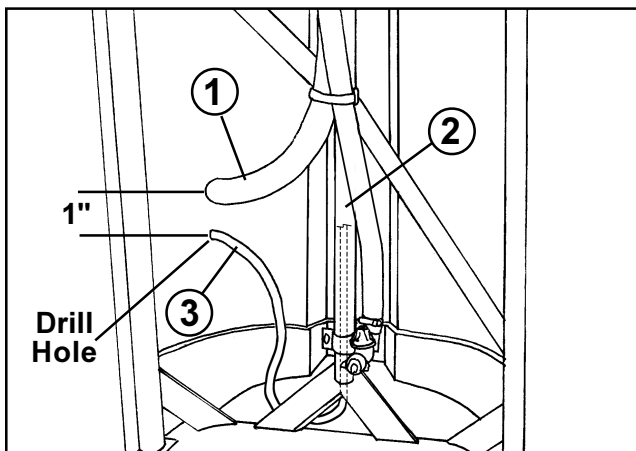


FIG. 16

1. Boom Extension Feed Hose
2. Nozzle Tube
3. Foam Marker Hose

5. Route the Foam Marker Hoses with the Right and Left Boom Feed Hoses and Actuator Wiring Harness to the front of the Center Boom, securing Foam Marker Hose to Boom Feed Hose and wiring with Plastic Ties, ensuring that Ties **do not** squash Hoses.

SECURING HOSE AND WIRING:

1. Tie Boom Feed Hose, Foam Marker Hose and Actuator Wiring Harness together with Plastic Ties every 8 - 10" ensuring that Ties do not squash Hose. At the Boom Extension pivot-fold joint ensure that the hose does not collapse or interfere with boom movement in the field, vertical transport or forward fold transport positions. Where Hoses and wiring go through Center Boom, secure to boom frame so hoses cannot interfere with spray pattern or boom operation.

2. Tie and secure all other hose and wiring so that it will not interfere with boom operation.

DRIFT SEAL INSTALLATION:

NOTE: If the Enclosed Boom must be transported at highway speeds to the end use location the Drift Seal should be installed at the end use location to prevent wind damage.

1. Assemble the Drift Seal sections into the Retainer Molding slots located on the lower edge of the Boom. The longer pieces will be easier to install if a light lubricant such as liquid soap or a silicone based product (i.e. Armour All) is used. (FIG. 14) The end of the Drift Seal at the Hood opening should be flush with the Drift Seal Retainer Molding.

2. Screw (12) #10 x 2" Drift Seal Retainer Screws into ends of curtain, setting head of screw flush with Retainer Molding. Where screws can not be used, crimp the end of the Retainer Molding 1/8" using Vice Grip pliers with tape on jaws to prevent scuffing of the molding.

G.V.W. OVERLOAD WARNING DECAL INSTALLATION:

IMPORTANT: When the ENCLOSED BOOM is installed on a WORKMAN® SPRAY SYSTEM the CAUTION Decal Part #94-8609 must be applied in up to 3 locations to warn the operator of possible Vehicle overload conditions. A Vehicle overload condition could lead to serious injury or death.

1. The WARNING Decal must be applied in (3) locations as shown in FIG. 18. Apply (1) Decal on each side of the rear Spray Tank Band and (1) Decal on the Hose Reel, if so equipped.

BEFORE OPERATING:

IMPORTANT! Grease inside surfaces of Transport Pin Receivers. Also grease Castor Fork Bushings, Wheel Bushings and Boom Mount.

Refer to the Operators Instructions for proper operating procedures.

Insert SET-UP AND PARTS MANUAL and OPERATORS MANUAL into Vehicles Manual holder.

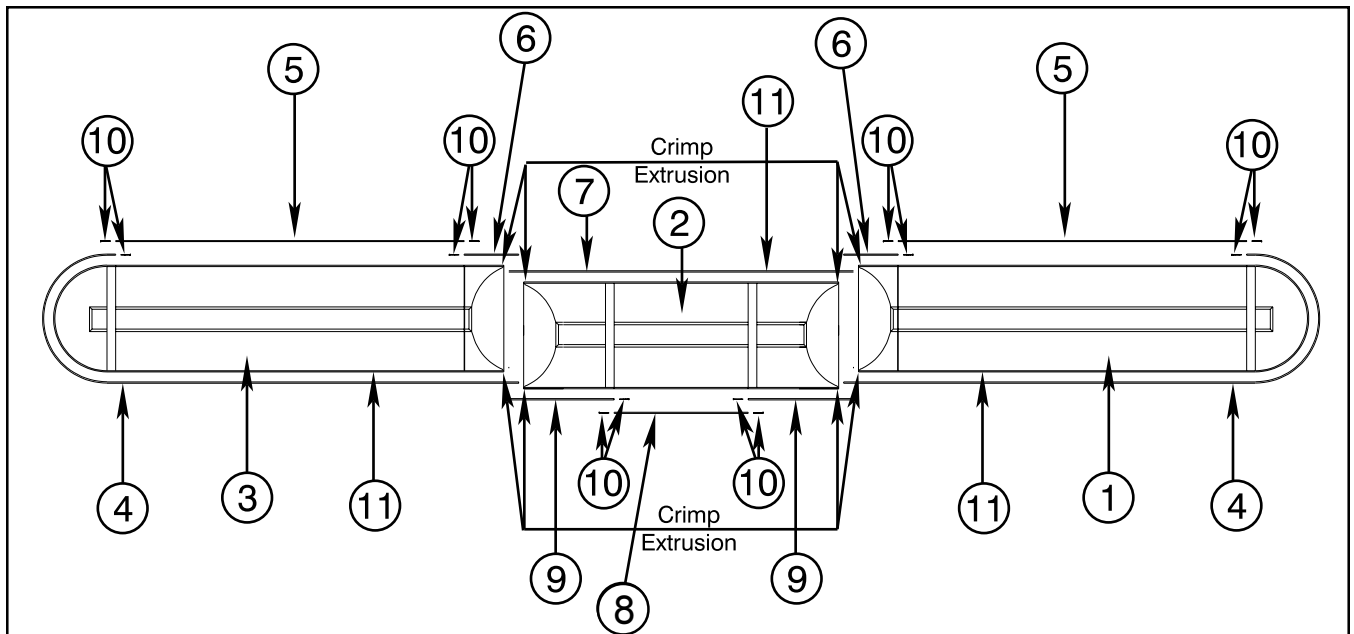


FIG. 17

- | | |
|---|--|
| 1. Right Boom Extension | 7. Center Boom Drift Seal - Front (68") |
| 2. Center Boom | 8. Center Boom Drift Seal - Hood (30-3/8") |
| 3. Left Boom Extension | 9. Center Boom Drift Seal - Rear (19") |
| 4. Boom Extension Drift Seal - Rear (113") | 10. Retainer Screw |
| 5. Boom Extension Drift Seal - Hood (65-1/2") | 11. Retainer Molding |
| 6. Boom Extension Drift Seal - Front (7-1/2") | |



WARNING

- This attachment may cause the overall gross vehicle weight to be exceeded when used in combination with other attachments
- Exceeding the gross vehicle weight can cause injury or death due to reduced handling, braking and stability.
- Always reduce payload to maintain vehicle weight within gross vehicle weight rating.
- See OPERATOR'S MANUAL for additional information.

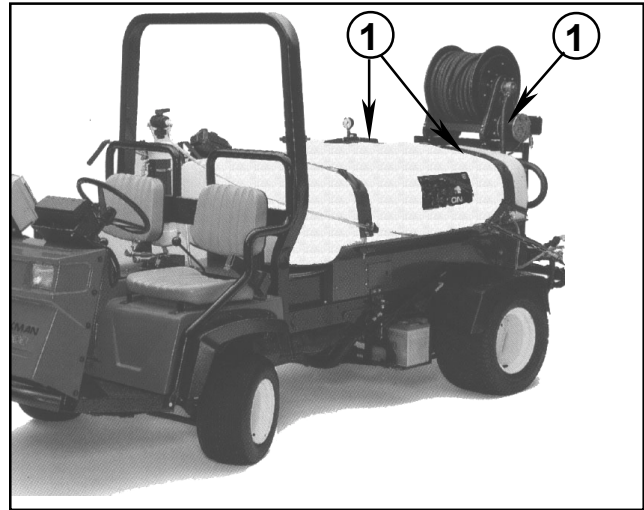
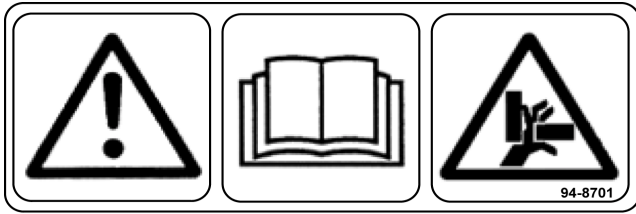


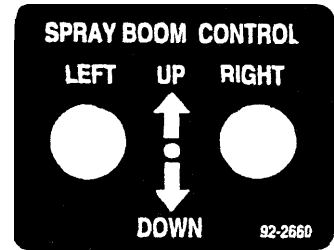
FIG. 18
1. Decal

NOTES:

SAFETY, INSTRUCTION AND IDENTIFICATION DECALS



Part No. 94-8701
 Located on Center Section Ends and on Boom
 Extension Hoods near Actuator Link.



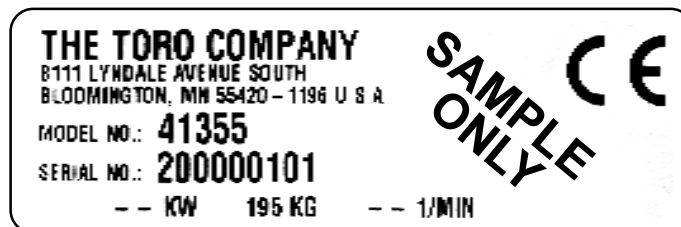
Part No. 92-2660 Used
 on WORKMAN only.
 Located on the Switch
 Bracket



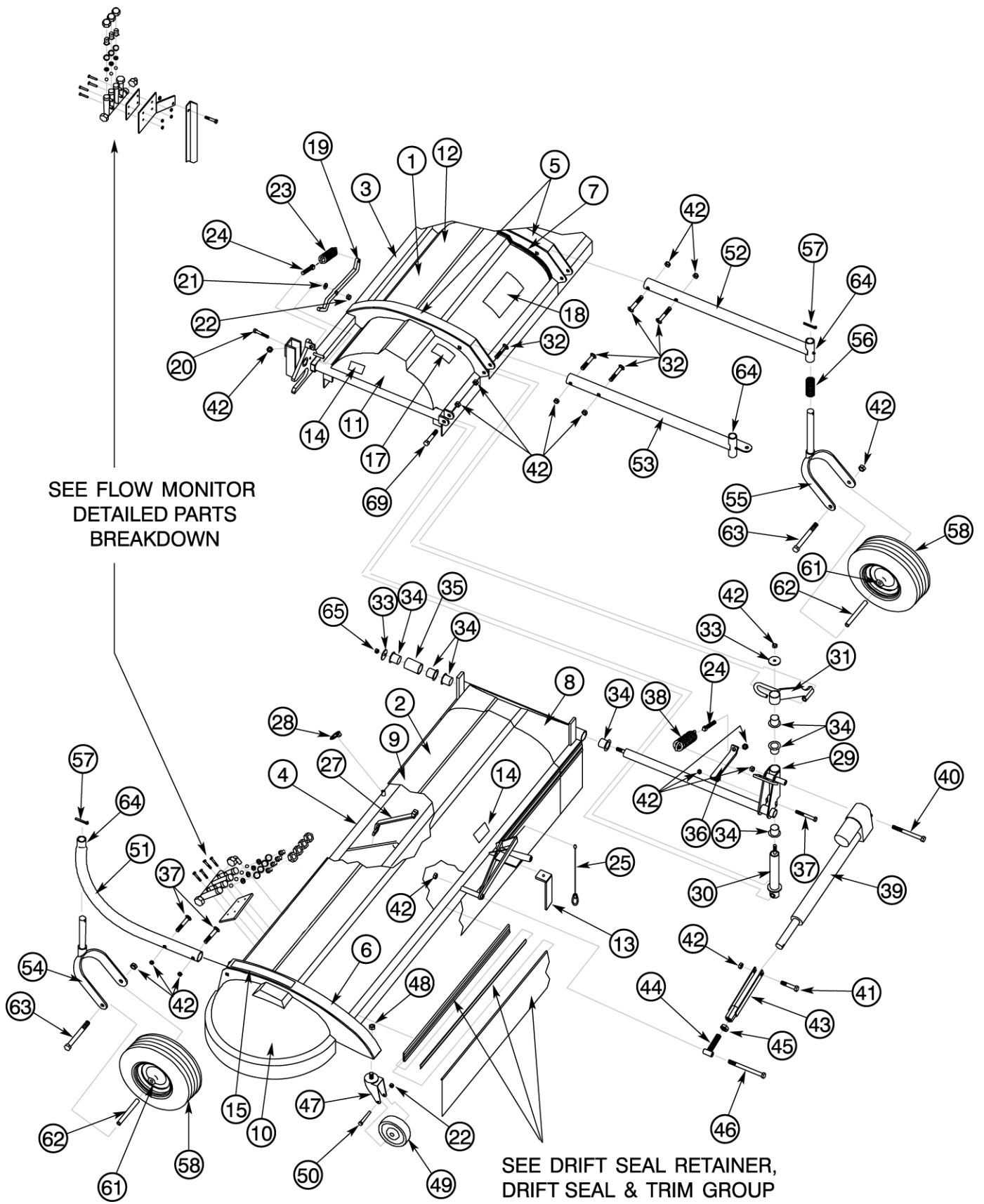
Part No. 94-8702 Located on Boom Extension curved Castor Wheel Mount



Part No. 94-8609 WORKMAN® Vehicle only - Located on either
 side of the rear Spray Tank Band and Hose Reel, if equipped with
 one. Enclosed Boom - Located on front left side of Center
 Section.



Serial Plate - Located on front left of center boom section.



FRAME & SHROUD GROUP

Ref	Part No.	Description	Qty
1	94-8645	Boom Center Section Including: Main Frame - Center Left Shroud End Cap Right Shroud End Cap Center Shroud Hood Bumper Strip - 2 of Joint Seal - 2 of Drift Seal Retainer - Center Boom - Front Drift Seal Retainer - Center Boom - Hood Drift Seal Retainer - Center Boom - Rear Red Vinyl Insert - Center Boom - Front Red Vinyl Insert - Center Boom - Hood Red Vinyl Insert - Center Boom - Rear Hood support assy. Breakaway Latch - 2 of Hex hd cap screw, 3/8" NC x 2" - 2 of Flat Washer - 3/8" - 6 of Locknut, 3/8" NC - 2 of Extension spring - Breakaway - 2 of Spring Adjuster Screw, 1/2" NC x 2" - 2 of Locknuts, 1/2" NC - 2 of Decal - Pinch Point Warning - 2 of Decal - GVW Warning Toro Decal	1
	94-8646	Boom Extension - Right - Including: (Not shown) Main Frame - Right Inner Shroud Cap - Left Boom Extension Boom Extension Shroud Hood Outer End Cap Shroud - Boom Extension - Left Bumper Strip Drift Seal Retainer - Boom Extension - Front Inner Drift Seal Retainer - Boom Extension - Front Outer Drift Seal Retainer - Boom Extension - Hood Drift Seal Retainer - Boom Extension - Rear Red Vinyl Insert - Boom Extension - Front Inner Red Vinyl Insert - Boom Extension - Front Outer Red Vinyl Insert - Boom Extension - Hood Red Vinyl Insert - Boom Extension Hood support assy. Quick Pin - 2 of Retainer Cable & Retainer Clip - Boom Extension Safety Decal - Pinch Point Warning Decal - Forward Fold Instruction Decal - Lift Caution	1

Ref	Part No.	Description	Qty
		Drift Seal Retainer - Boom Extension - Rear Red Vinyl Insert - Boom Extension - Front Inner Red Vinyl Insert - Boom Extension - Front Outer Red Vinyl Insert - Boom Extension - Hood Red Vinyl Insert - Boom Extension Hood support assy. Quick Pin - 2 of Retainer Cable & Retainer Clip - Boom Extension Safety Decal - Pinch Point Warning Decal - Forward Fold Instruction Decal - Lift Warning	
2	94-8647	Boom Extension - Left - Including: Main Frame - Left Inner Shroud Cap - Left Boom Extension Boom Extension Shroud Hood Outer End Cap Shroud - Boom Extension - Left Bumper Strip Drift Seal Retainer - Boom Extension - Front Inner Drift Seal Retainer - Boom Extension - Front Outer Drift Seal Retainer - Boom Extension - Hood Drift Seal Retainer - Boom Extension - Rear Red Vinyl Insert - Boom Extension - Front Inner Red Vinyl Insert - Boom Extension - Front Outer Red Vinyl Insert - Boom Extension - Hood Red Vinyl Insert - Boom Extension Hood support assy. Quick Pin - 2 of Retainer Cable & Retainer Clip - Boom Extension Safety Decal - Pinch Point Warning Decal - Forward Fold Instruction Decal - Lift Caution	1

FRAME & SHROUD GROUP

Ref	Part No.	Description	Qty
3	95-2058	Main Frame - Center	1
	95-2059	Main Frame - Right (Not shown)	1
4	95-2060	Main Frame - Left	1
5	94-8711	Bumper Strip-Center Section - 26"	2
6	94-8712	Bumper Strip-Boom Extension - 29-1/2"	2
	95-2129	Bumper Strip - Boom Extension -Front - 3" (not shown located under Castor Mount)	2
7	95-2080	Joint Seal - 26-1/4"	20
	32144-74	#6 x 3/8" Pan hd CW Self Tapping (not shown used with Joint Seal)	1
8	94-8684	Inner Shroud Cap - Left Boom Extension - plastic only	1
	94-8685	Inner Shroud Cap - Right Boom Extension - plastic only (Not shown)	2
9	94-8686	Boom Extension Shroud Hood - Left Boom - plastic only	1
	95-2130	Boom Extension Shroud Hood -Right Boom - plastic only (not shown)	1
10	94-8688	Outer End Cap Shroud - Boom Extension - Left - plastic only	1
	94-8689	Outer End Cap Shroud - Boom Extension - Right - plastic only (Not shown)	1
11	94-8698	Center Section Shroud End Cap - Left- plastic only	1
	94-8699	Center Section Shroud End Cap - Right - plastic only (Not shown)	1
12	94-8687	Center Section Shroud Hood - plastic only	2
13	95-2004	Drift Seal Stop	2
14	94-8701	Decal - Pinch Point Warning	2
15	94-8702	Decal - Forward Fold Instruction	1
17	94-8609	Decal - GVW	1
18	62-5550	Toro Decal	1
19	94-8649	Breakaway Latch	2
20	323-9	Hex hd cap screw, 3/8" NC x 1-3/4"	2
21	3256-4	Flat Washer - 3/8" (3 req'd per side)	6
22	3296-59	Locknut, 3/8" NC	2
23	94-8675	Extension Spring - Breakaway	2
24	95-2061	Spring Adjuster Screw, 1/2" NC x 2"	3
25	94-8708	Retainer Clip - c/w Retainer Cable	1
27	94-8668	Hood Support Assembly: Support Latch - one of Pivot Mount - one of Pivot Pin - one of Cotter Pin - one of	2
28	92-1248	Quick Pin - Boom Ext Hood - 3/16" c/w Retainer Ring	4

BOOM EXTENSION PIVOT JOINT GROUP

Ref	Part No.	Description	Qty
29	94-8678	Boom Extension Breakaway Pivot - Left	1
	94-8679	Boom Extension Breakaway Pivot - Right (Not shown)	1
30	94-8680	Boom Extension Breakaway Pivot Pin	2
31	94-8681	Boom Extension Breakaway Pivot Support - Left	1
	94-8682	Boom Extension Breakaway Pivot Support - Right (Not shown)	1
69	325-10	Hex hd cap screw, 1/2" x 2-1/2"	2
32	3233-6	Carriage Bolt, 1/2" NC x 3"	2
42	32146-13	Locknuts, 1/2" NC	12
33	94-8664	Pivot Retainer Washer	4
34	94-8650	Bushing - flanged - Nylon	14
35	94-8683	Breakaway Retainer Collar	2
36	94-8690	Boom Extension Push Out Bracket	2
37	325-18	Hex hd cap screw, 1/2" NC x 4-1/2"	2
38	94-8675	Extension Spring-Push Out Bracket	2
24	95-2061	Spring Adjuster Screw, 1/2" NC x 2"	2

BOOM LIFT ACTUATOR GROUP

Ref	Part No.	Description	Qty
39	948-8556	Actuator - See Detailed Parts Breakdown	2
40	325-198	Hex hd cap screw, 1/2" UNC x 5"	2
41	325-8	Hex hd cap screw, 1/2" UNC x 2"	2
42	32146-13	Lock nut, 1/2" UNC	4
43	94-8648	Actuator Adjustment Link	2
44	94-8651	Actuator Adjustment T	2
45	3218-7	Jam nut, 3/4" UNC	2
46	100-7090	Hex hd cap screw, 1/2" UNC x 8 1/2"	2
65	3218-18	Nut - Jam, 1/2" UNC	4

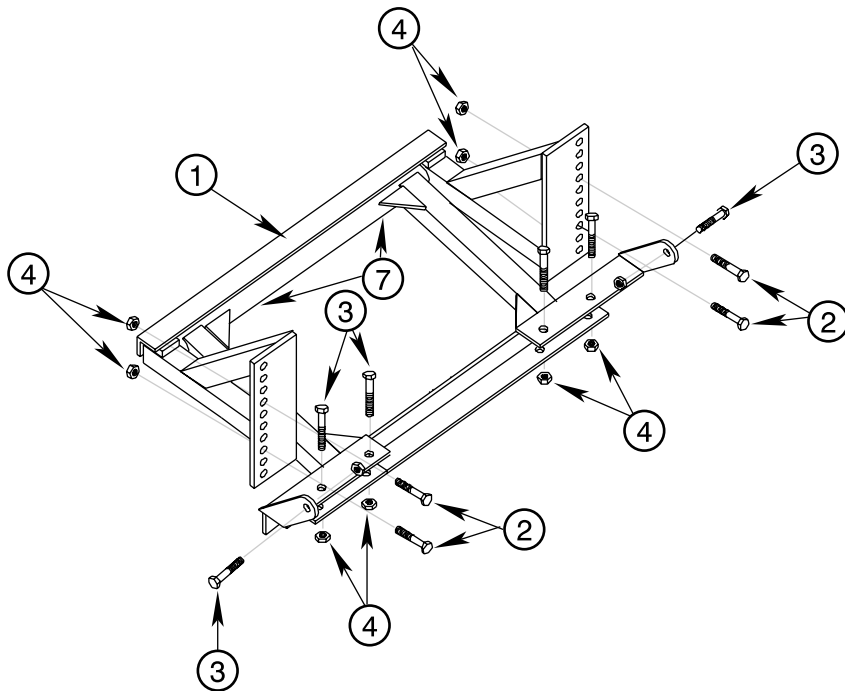
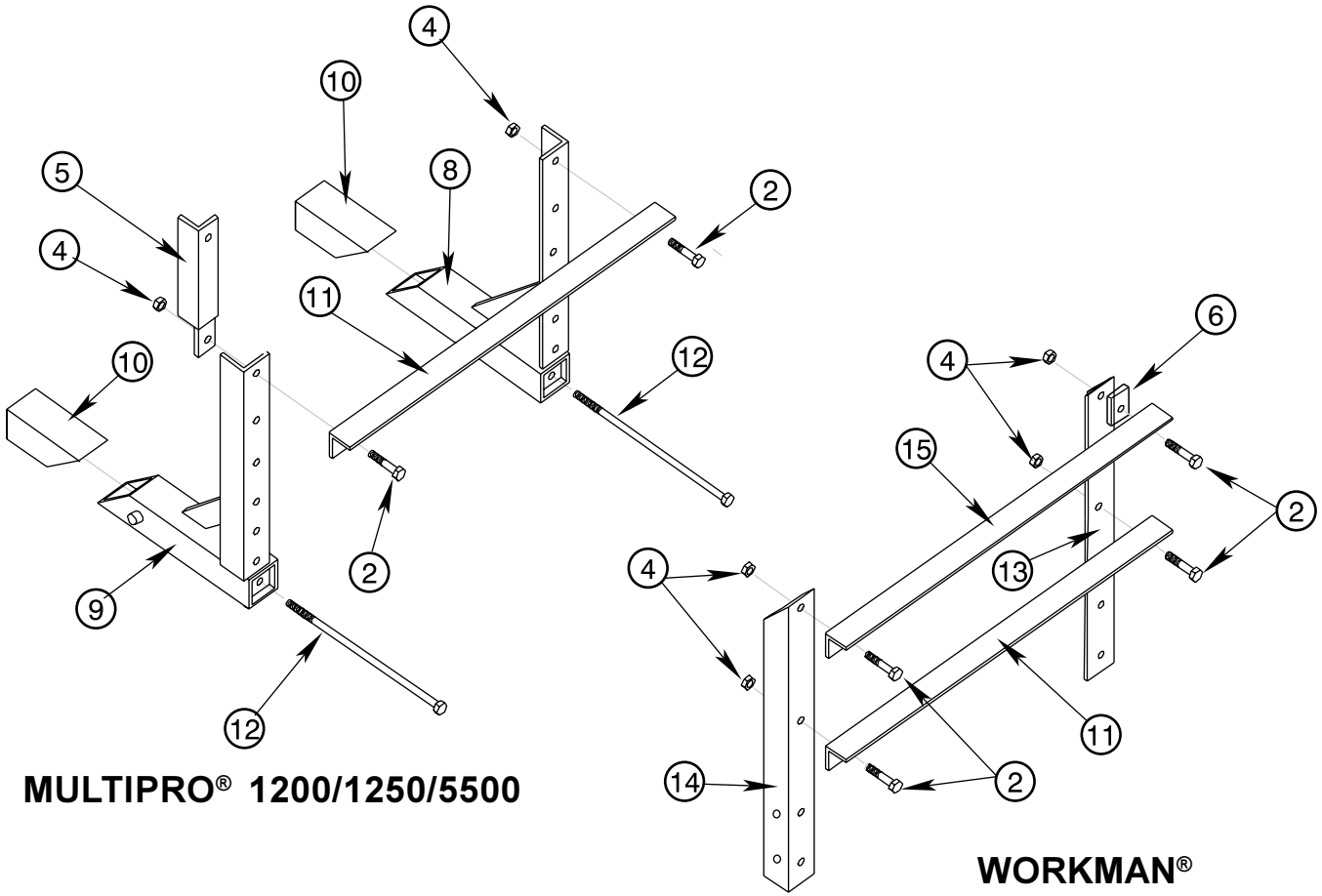
WHEEL MOUNT & WHEEL GROUP

Ref	Part No.	Description	Qty
47	94-8652	Castor Fork - Anti-Scalp	2
48	32146-7	Lock Nut, 7/16" NC	2
49	94-8677	Wheel - Anti-Scalp - 5" O.D. x 3/8" I.D.	2
50	323-12	Hex hd cap screw, 3/8" NC x 2-1/2"	2
22	3296-59	Lock nut, 3/8" NC	2
51	94-8653	Castor Mount - Boom Extension - Curved	2
52	94-8655	Castor Mount - Center Section - Straight - Right	1
53	94-8667	Castor Mount - Center Section - Straight c/w Hitch - Left	1
32	3233-6	Carriage bolt, 1/2" NC x 3"	8
42	32146-13	Locknut, 1/2"	12
54	94-8654	Castor Fork - Boom Extension - 4-9/16" shaft	2
55	94-8656	Castor Fork - Center Extension - 8-9/16" shaft	2
56	94-8709	Compression Spring - Center Castor - 1" I.D. x 4"	2
57	3272-23	Cotter Pin - 3/16" x 1-1/2"	4
58	94-8693	Wheel Assembly including: Wheel Rim - 6" x 4" - 6" Centered Hub - 1 of Tire - 15 x 6.00 - 6.00 Turf Rib - 1 of Wheel Bushing - 3/4" Flanged - 2of	4
	94-8694	Wheel Rim - 6" x 4" - 6" Centered Hub c/w Bushing	4
	94-8695	Tire - 15 x 6.00 - 6.00 Turf Rib	4
61	94-8696	Wheel Bushing - 3/4" Flanged	8
62	94-8697	Wheel Bearing Tube - 3/4" O.D. x 6"	4
63	325-36	Hex hd cap screw, 1/2" NC x 7-1/2"	4
64	302-19	Grease zerk - 1/4" NF	10

FOAM MARKER OPTION

Ref	Part No.	Description	Qty
	94-8773	Hose - Foam Marker Feed - 1/4" x 78" (Not shown)	2
	100-7089	Hose Connector - 1/4" - 3/8" (not shown)	
	97406	Hose Clamp - 1/4" - 3/8"(Not shown)	3
	94-7195	Cap - Boom Nozzle Tube	2

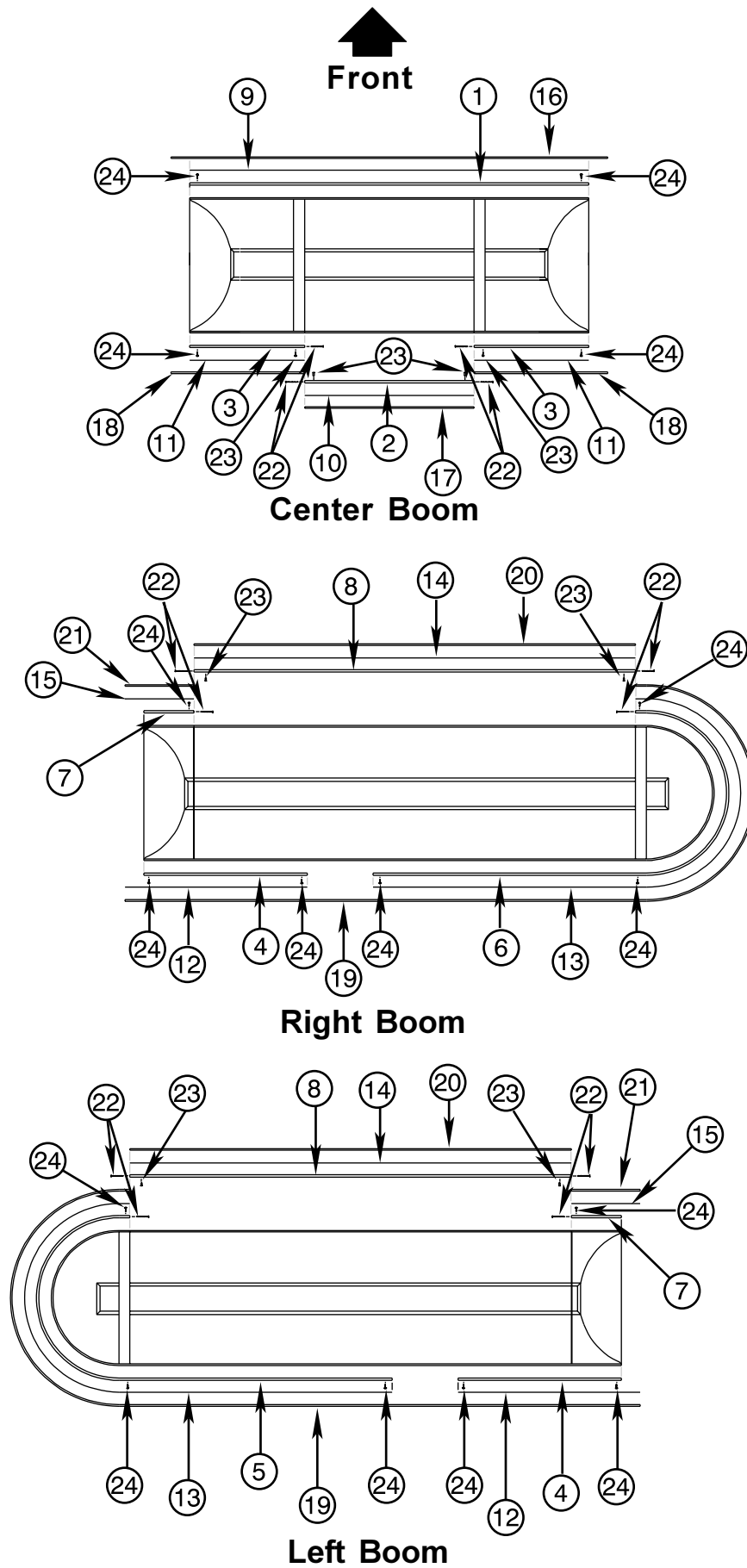
MOUNT



MOUNT

Ref	Part No.	Description	Qty
1	95-2012	1200, 1250, 5500 & WORKMAN Mount Asm	1
2	325-5	Hex hd cap screw, 1/2" NC x 1-1/4"	9
3	325-12	Hex hd cap screw 1/2" NC x 3"	6
4	32146-13	Lock Nut, 1/2" NC	19
5	94-8673	Flow Monitor Mount Extender Bracket - MP 5500	1
6	95-2009	Flow Monitor Mount Spacer - 2" x 1-1/2" x 3/16"	1
7	302-19	Grease Zerk - 1/4" NF	2
8	42217	Boom Mount Assembly - Right - 5500	1
9	42222	Boom Mount Assembly - Left - 5500	1
10	42223	Tube Wedge Assembly - 5500	2
11	42225	Cross Support Angle - 5500 / WORKMAN	1
12	42199	Hex hd cap screw, 1/2" NC x 18" - 5500	2
13	92-3670	Boom Mounting Angle - RH - WORKMAN	1
14	92-3671	Boom Mounting Angle - LH -WORKMAN	1
15	92-3672	Cross Angle - Upper	1

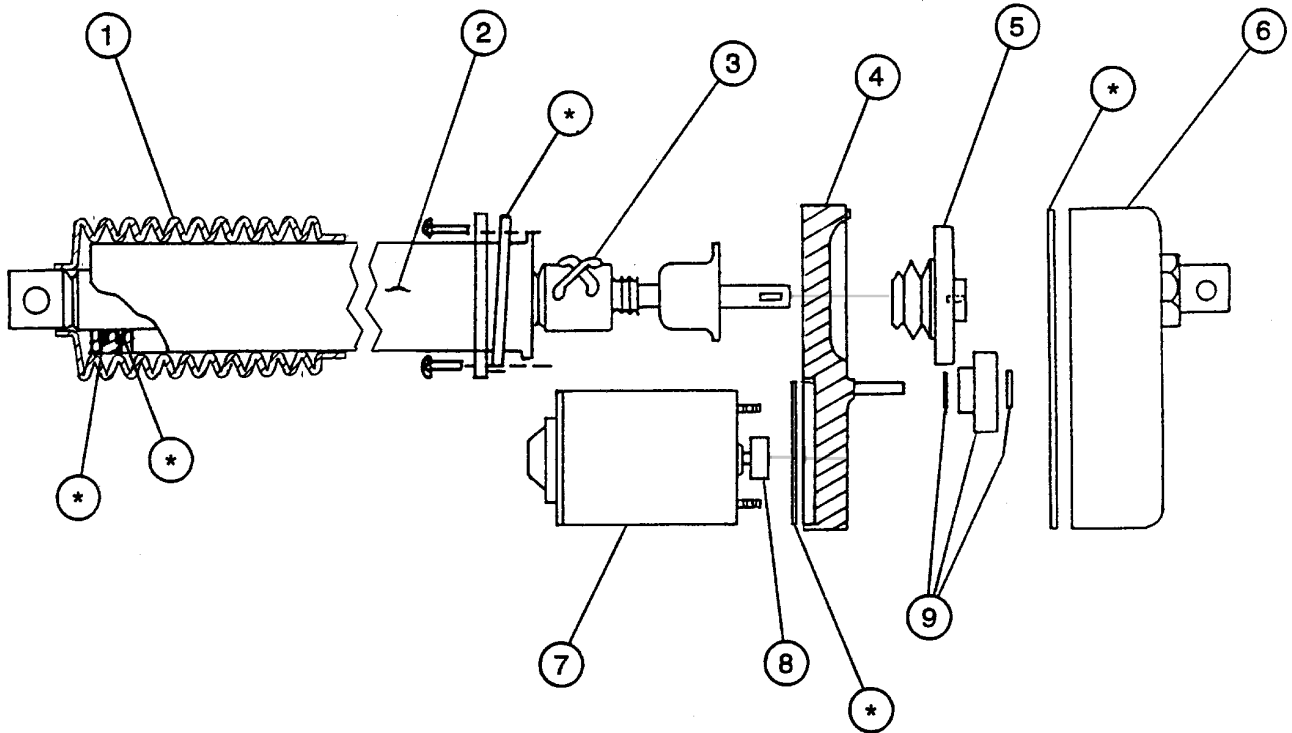
DRIFT SEAL RETAINER, DRIFT SEAL AND TRIM GROUP



DRIFT SEAL RETAINER, DRIFT SEAL AND TRIM GROUP

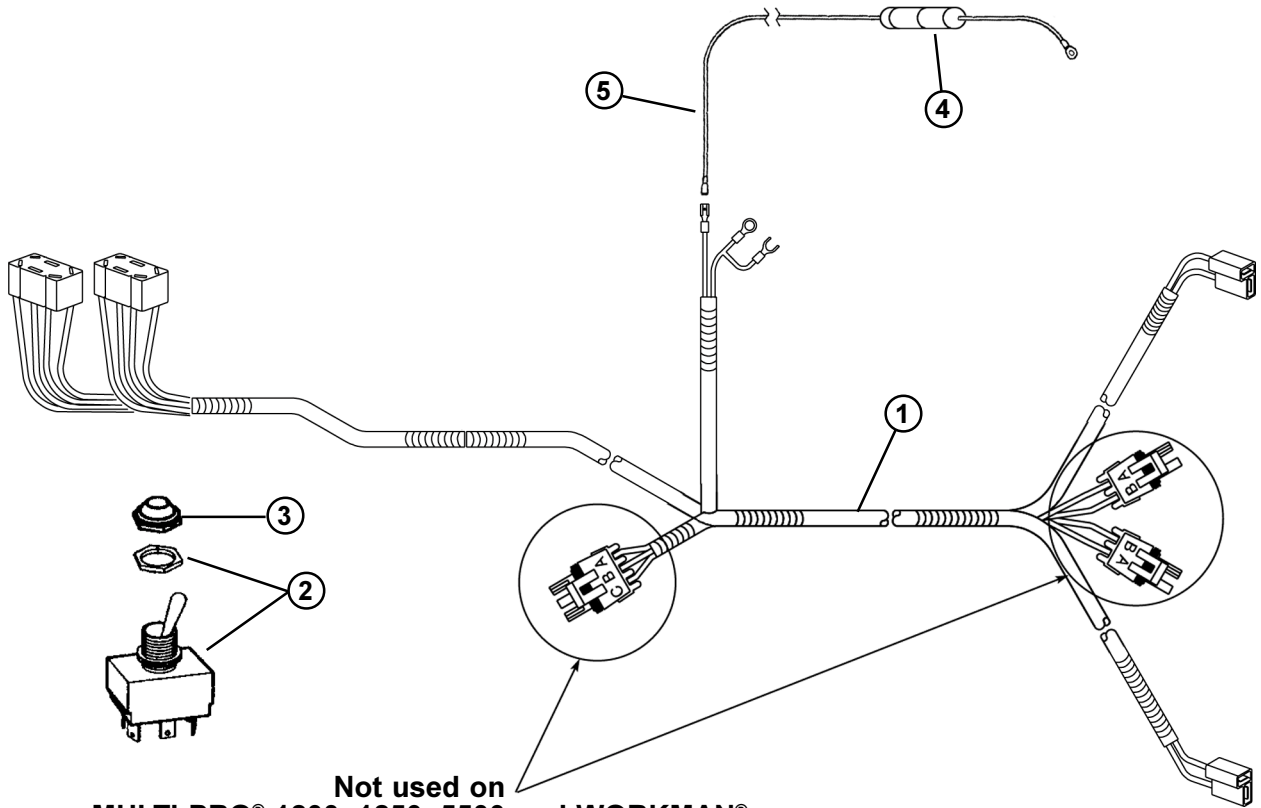
Ref	Part No.	Description	Qty
1	95-2001	Drift Seal Retainer - Center Boom Front - 64-1/4"	1
2	95-2002	Drift Seal Retainer - Center Boom Hood - 30-3/8"	1
3	95-2003	Drift Seal Retainer - Center Boom Rear - 16-1/2"	2
4	94-8797	Drift Seal Retainer - Boom Extension - Rear Inner - 26"	2
5	94-8798	Drift Seal Retainer - Boom Extension - Rear Outer - Left - 73-3/4"	1
6	95-2131	Drift Seal Retainer - Boom Extension - Rear Outer - Right - 73-3/4"	1
7	95-2000	Drift Seal Retainer - Boom Extension - Front - 5-7/16"	2
8	94-8799	Drift Seal Retainer - Boom Extension - Hood - 65-9/16"	2
9	94-8768	Red Vinyl Insert - Center Boom - Front - 64-1/4"	1
10	94-8769	Red Vinyl Insert - Center Boom - Hood - 30-3/8"	1
11	94-8770	Red Vinyl Insert - Center Boom - Rear - 16-1/2"	2
12	94-8670	Red Vinyl Insert - Boom Extension - Rear Inner - 26"	2
13	94-8765	Red Vinyl Insert - Boom Extension - Rear Outer - 74-1/8"	2
14	94-8766	Red Vinyl Insert - Boom Extension - Hood - 65-9/16"	2
15	94-8767	Red Vinyl Insert - Boom Extension - Front - 5-7/16"	2
16	94-8660	Drift Seal - Center Boom - Front - 68"	1
17	94-8661	Drift Seal - Center Boom - Hood - 30-3/8"	1
18	94-8662	Drift Seal - Center Boom - Rear - 19"	2
19	94-8657	Drift Seal - Boom Extension - Rear - 113"	2
20	94-8658	Drift Seal - Boom Extension - Hood - 65-1/2"	2
21	94-8659	Drift Seal - Boom Extension - Front - 7-1/2"	2
22	94-8666	#10 x 2" Drift Seal Retainer Screw	12
23	3261-20	Rivet - 3/16" x 3/16" - 1/4" GR Steel	25
24	94-8663	Screw #10 x 3/4" Self Drilling	60

ELECTRIC ACTUATOR



Ref	Part No.	Description	Qty
	94-8556	Actuator - Complete Assembly	1
1	94-8796	Boot Kit (Includes clamps)	1
2	94-8676	Cover Tube	1
3	94-8665	Drive Screw Assembly	1
4	94-8776	Front Housing	1
5	42847	Clutch Assembly	1
6	92-3851	Rear Housing	1
7	94-8794	Motor	1
8	42852	Motor Pinion Gear	1
9	94-8795	Intermediate Gear	1
*	42851	Sealing Kit	AR

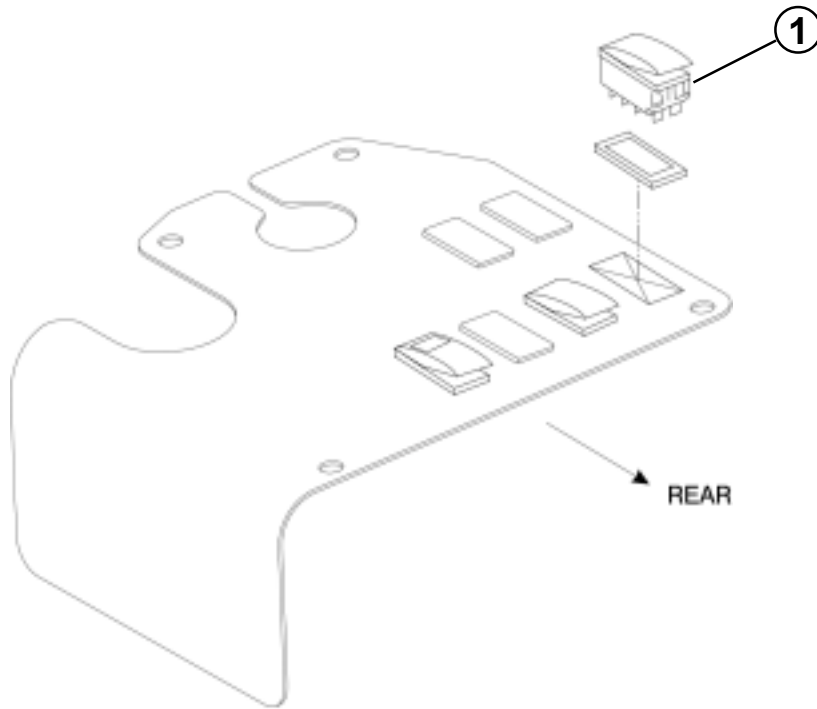
ACTUATOR WIRING HARNESS



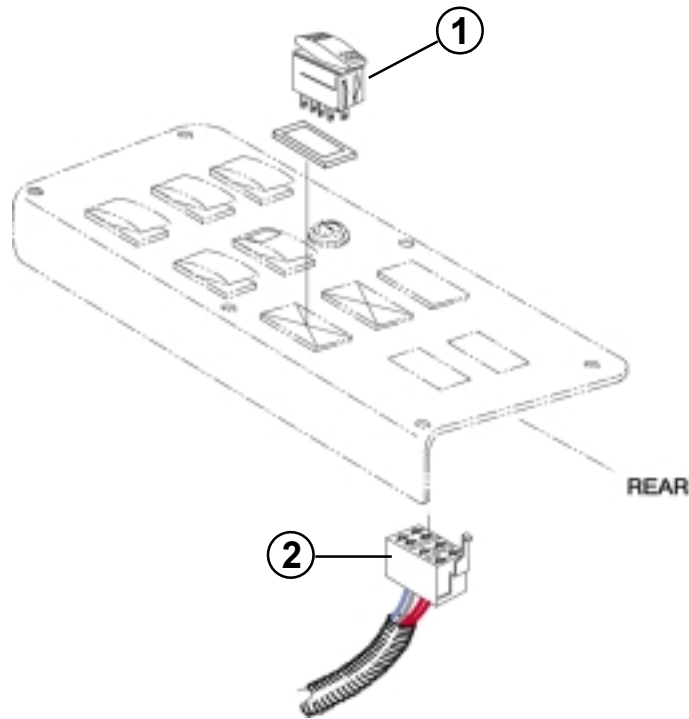
**Not used on
MULTI-PRO® 1200, 1250, 5500 and WORKMAN®**

Ref	Part No.	Description	Qty
1	94-8559	Wiring Harness	1
2	30954	Toggle Switch c/w Nut	2
3	30955	Rubber Boot	2
4	100-7092	Fuse - 30 Amp Slow Blow	1
5	100-7091	Power Wire Extender	1

MULTI-PRO® 1200 SWITCH ASSEMBLY

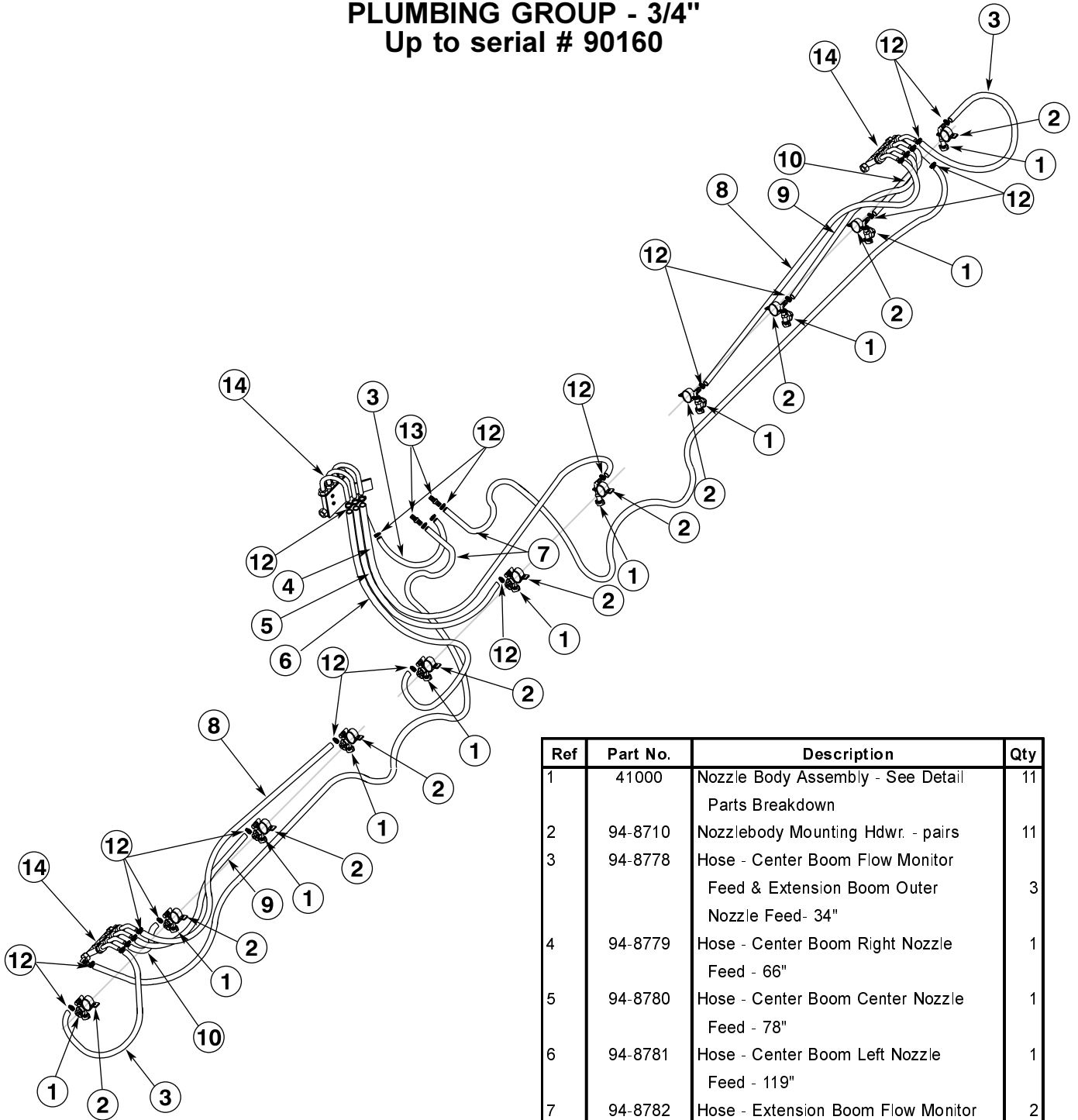


MULTI-PRO® 1250 SWITCH ASSEMBLY



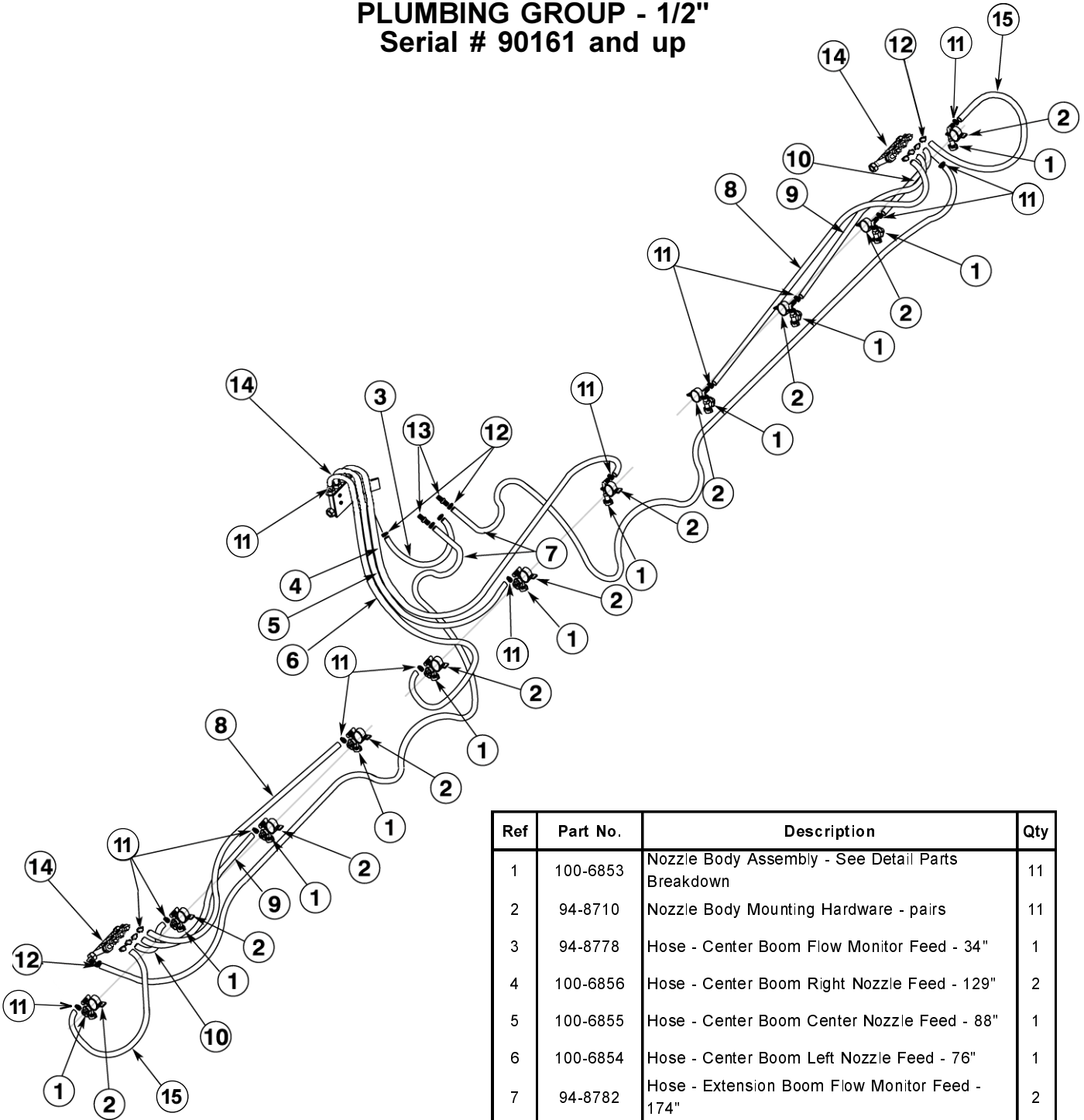
Ref	Part No.	Description	Qty
1	100-1535	Rocker Switch	2
2	100-7061	Wire Harness Extension	2

PLUMBING GROUP - 3/4"
Up to serial # 90160



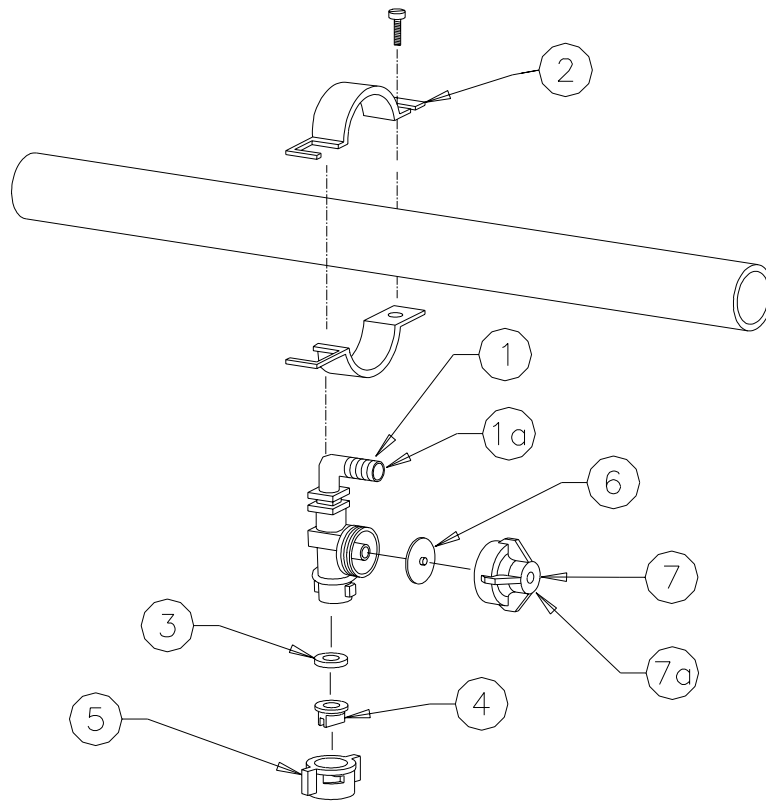
Ref	Part No.	Description	Qty
1	41000	Nozzle Body Assembly - See Detail Parts Breakdown	11
2	94-8710	Nozzlebody Mounting Hdw. - pairs	11
3	94-8778	Hose - Center Boom Flow Monitor Feed & Extension Boom Outer Nozzle Feed- 34"	3
4	94-8779	Hose - Center Boom Right Nozzle Feed - 66"	1
5	94-8780	Hose - Center Boom Center Nozzle Feed - 78"	1
6	94-8781	Hose - Center Boom Left Nozzle Feed - 119"	1
7	94-8782	Hose - Extension Boom Flow Monitor Feed - 174"	2
8	94-8783	Hose - Extension Boom Inner Nozzle Feed - 59"	2
9	94-8784	Hose - Extension Boom Second from Inner Nozzle Feed - 41"	2
10	94-8785	Hose - Extension Boom Second from Outer Nozzle Feed - 23"	2
12	2412-36	Hose Clamps	27
13	95-2073	Hose Connector - 3/4"	2
14		Flow Monitor Assy - See Detail Parts Breakdown	

PLUMBING GROUP - 1/2"
Serial # 90161 and up



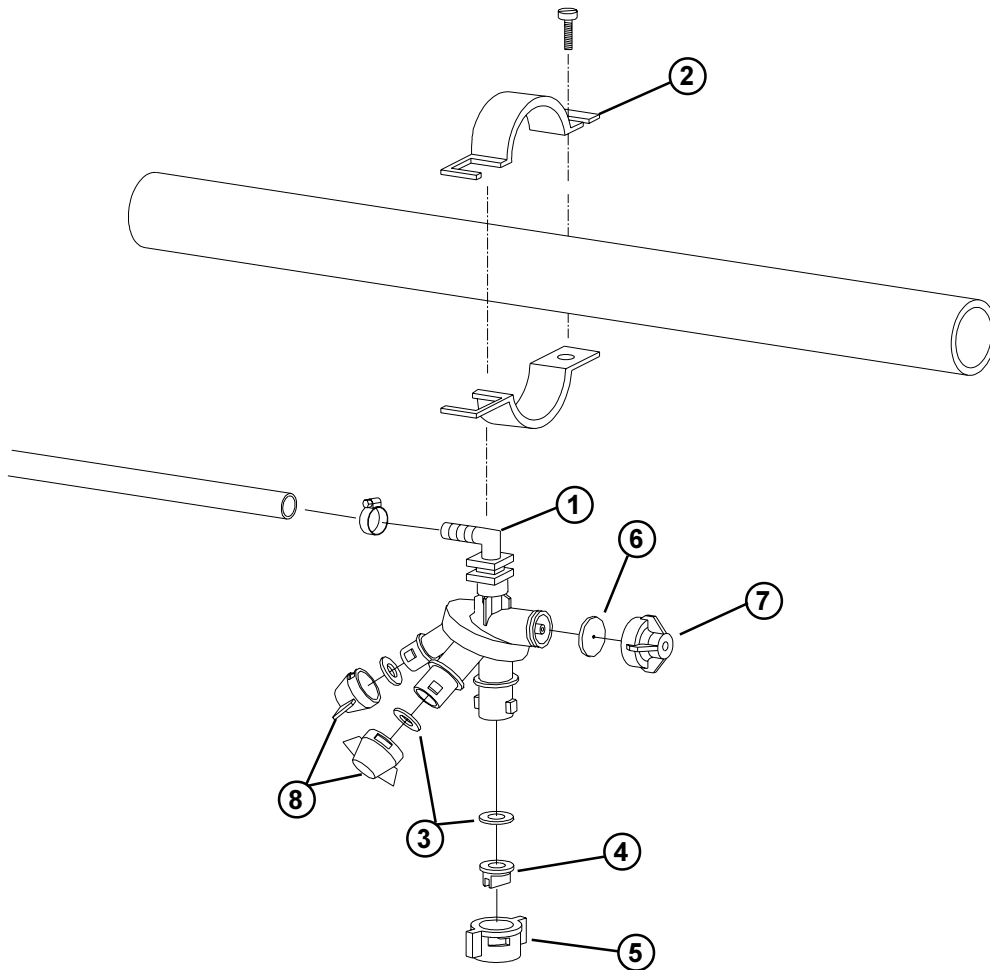
Ref	Part No.	Description	Qty
1	100-6853	Nozzle Body Assembly - See Detail Parts Breakdown	11
2	94-8710	Nozzle Body Mounting Hardware - pairs	11
3	94-8778	Hose - Center Boom Flow Monitor Feed - 34"	1
4	100-6856	Hose - Center Boom Right Nozzle Feed - 129"	2
5	100-6855	Hose - Center Boom Center Nozzle Feed - 88"	1
6	100-6854	Hose - Center Boom Left Nozzle Feed - 76"	1
7	94-8782	Hose - Extension Boom Flow Monitor Feed - 174"	2
8	100-6857	Hose - Extension Boom Inner Nozzle Feed - 69 1/2"	2
9	100-6858	Hose - Extension Boom Second from Inner Nozzle Feed - 49 1/2"	2
10	100-6859	Hose - Extension Boom Second from Outer Nozzle Feed - 31"	2
11	96609	Clamp - Hose, 1/2"	22
12	2412-36	Clamp - Hose, 3/4"	5
13	95-2073	Hose Connector - 3/4"	2
14		Flow Monitor Assy - See Detail Parts Breakdown	
15	100-6860	Hose - Extension Boom Outer Nozzle Feed - 42"	2

NOZZLE BODY ASSEMBLY Up to serial # 90160



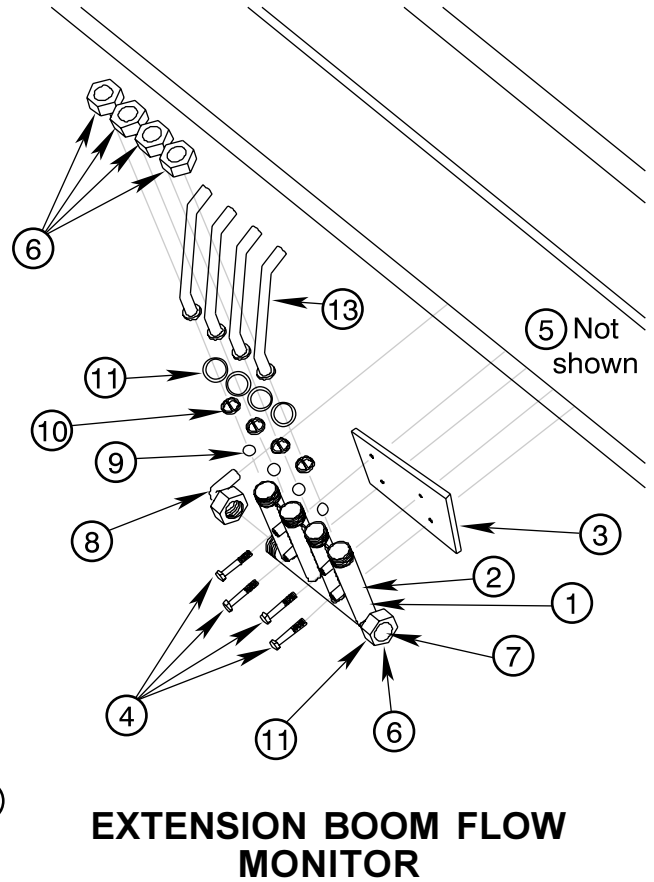
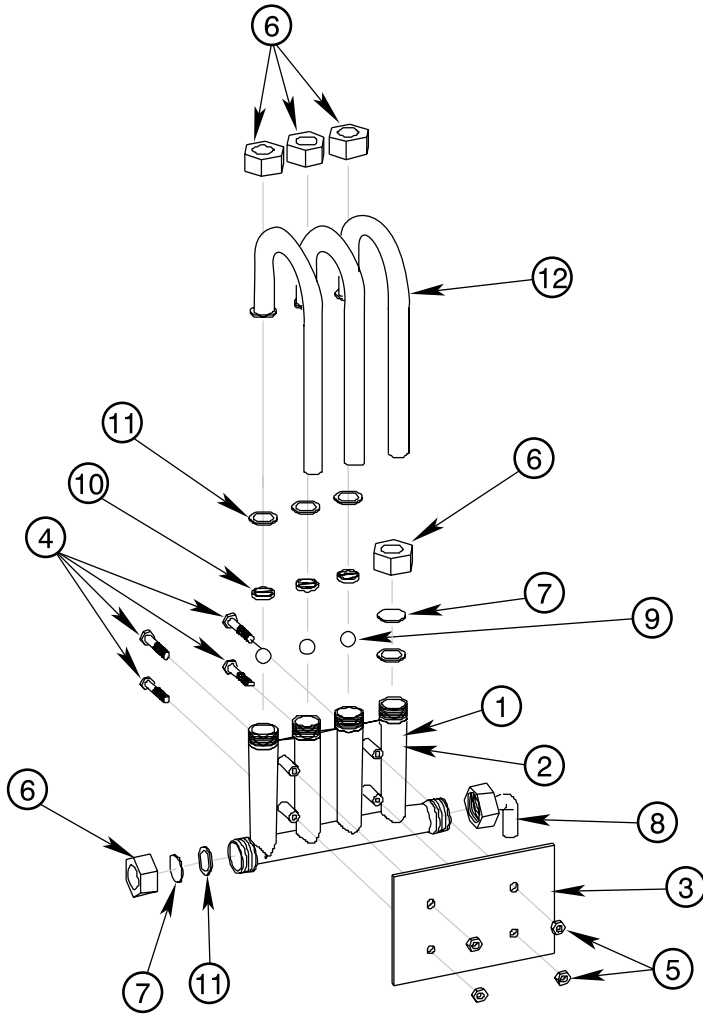
Ref	Part No.	Description	Qty
1	41000	Nozzlebody - L Type Assy Includes: Nozzlebody - 1 of	1
1a	95-2452	Nozzlebody - L Type Assy Includes: Nozzlebody - 1 of Diaphragm - 1 of Diaphragm Cap (10 p.s.i.) - 1 of	1
2	94-8710	Nozzlebody Mounting Hardware - pairs	1
3	40998	Gasket - Nozzle	1
4	94-8719	Spray Nozzle - Teejet XR11015SS	1
4	94-8718	Spray Nozzle - Teejet XR11010SS (Standard with Boom)	1
4	94-8717	Spray Nozzle - Teejet XR11008VS	1
4	94-8716	Spray Nozzle - Teejet XR11006VS	1
4	94-8715	Spray Nozzle - Teejet XR11005VS	1
4	94-8714	Spray Nozzle - Teejet XR11004VS	1
5	94-8720	Spray Nozzle Retainer Cap	1
6	41003	Diaphragm	1
7	95-2451	Diaphragm Cap - 10 p.s.i.	1
7a	95-2450	Diaphragm Cap - 20 p.s.i. - Used on Enclosed Booms with Serial No. above 70130	1

NOZZLE BODY ASSEMBLY Serial #'s 90161 and up



Ref	Part No.	Description	Qty
1	100-6853	Nozzlebody - Triple Type Assy Includes: Nozzlebody - 1 of Diaphragm - 1 of Diaphragm Cap (10 p.s.i.) - 1 of	1
2	94-8710	Nozzlebody Mounting Hardware - pairs	1
3	40998	Gasket - Nozzle	3
4	94-8719	Spray Nozzle - Teejet XR11015SS	1
4	94-8718	Spray Nozzle - Teejet XR11010SS (Standard with Boom)	
4	94-8717	Spray Nozzle - Teejet XR11008VS	
4	94-8716	Spray Nozzle - Teejet XR11006VS	
4	94-8715	Spray Nozzle - Teejet XR11005VS	
4	94-8714	Spray Nozzle - Teejet XR11004VS	1
5	94-8720	Spray Nozzle Retainer Cap	1
6	41003	Diaphragm	1
7	95-2451	Diaphragm Cap - 10 p.s.i.	1
8	95-9187	Spray Nozzle Retainer Cap - Blank	2

FLOW MONITOR Up to serial # 90160



EXTENSION BOOM FLOW MONITOR

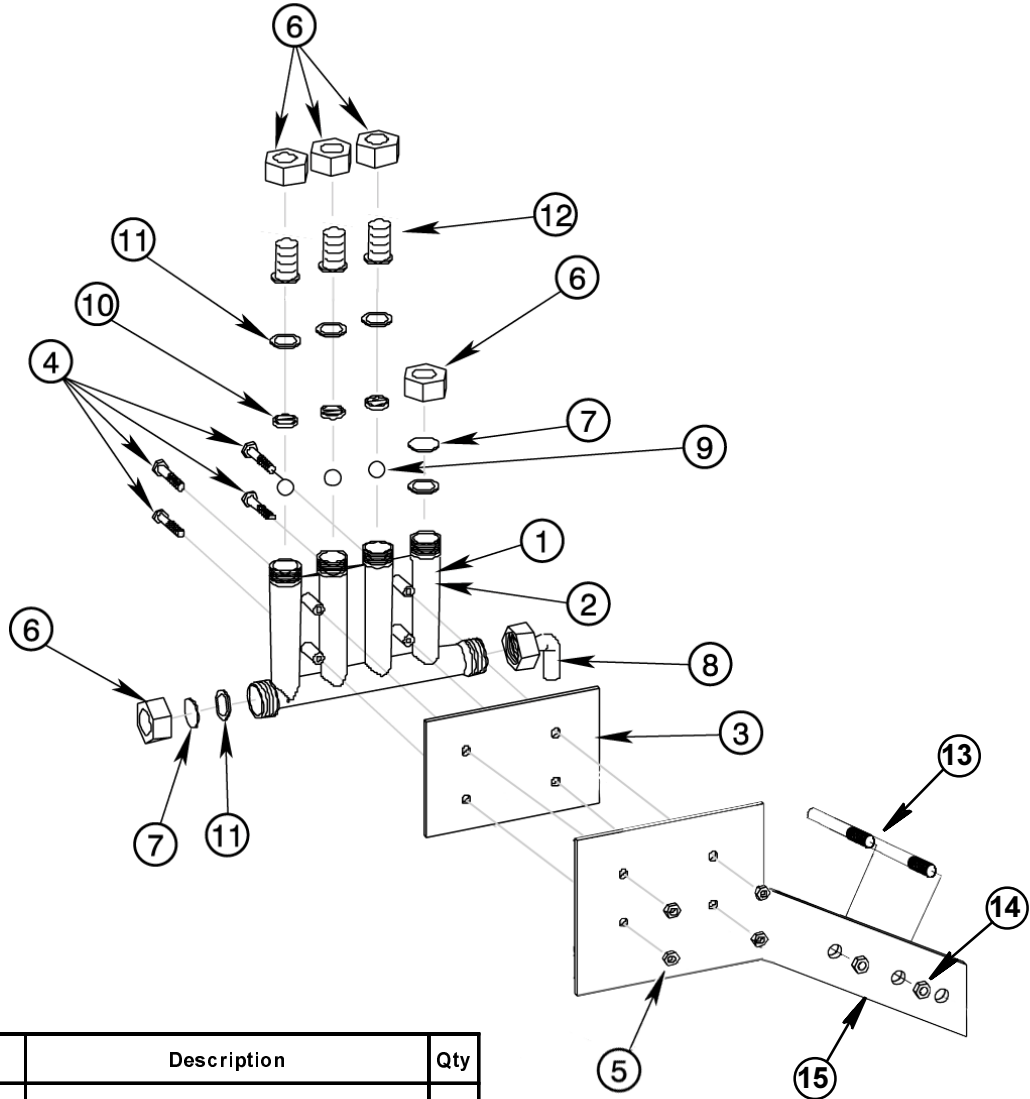
CENTER BOOM FLOW MONITOR

Ref	Part No.	Description	Qty
1	94-8721	Flow Monitor Assembly includes: Flow Monitor Manifold Swivel Nut - 5 of Blank Disk - 2 of Flow Indicator Ball - Steel - 4 of Flow Indicator Ball Retainer - 4 of Rubber Washer - 5 of	1
2	95-2032	Flow Monitor Manifold	1
3	94-8691	Flow Monitor Backing Plate	1
4	321-11	Hex hd cap screw, 1/4" NC x 2"	4
5	32146-17	Lock Nut, 1/4" NC	4

Ref	Part No.	Description	Qty
6	94-8722	Swivel Nut	5
7	94-8692	Blank Disk	2
8	94-8723	Elbow - 3/4" FPT - 3/4" HB	1
9	94-8724	Flow Indicator Ball - Steel	4
10	94-8725	Flow Indicator Ball Retainer	4
11	94-8726	Rubber Washer	5
12	94-8669	J-Neck - 3/4" - Used with Center Boom Flow Monitor	3
13	94-8700	L-Neck - 3/4" - Used with Boom Extension FLOW Monitor	4

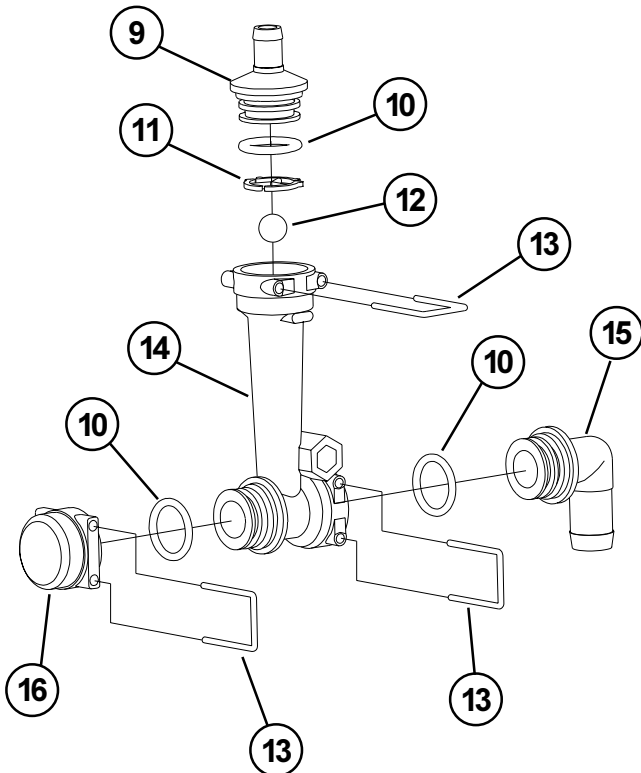
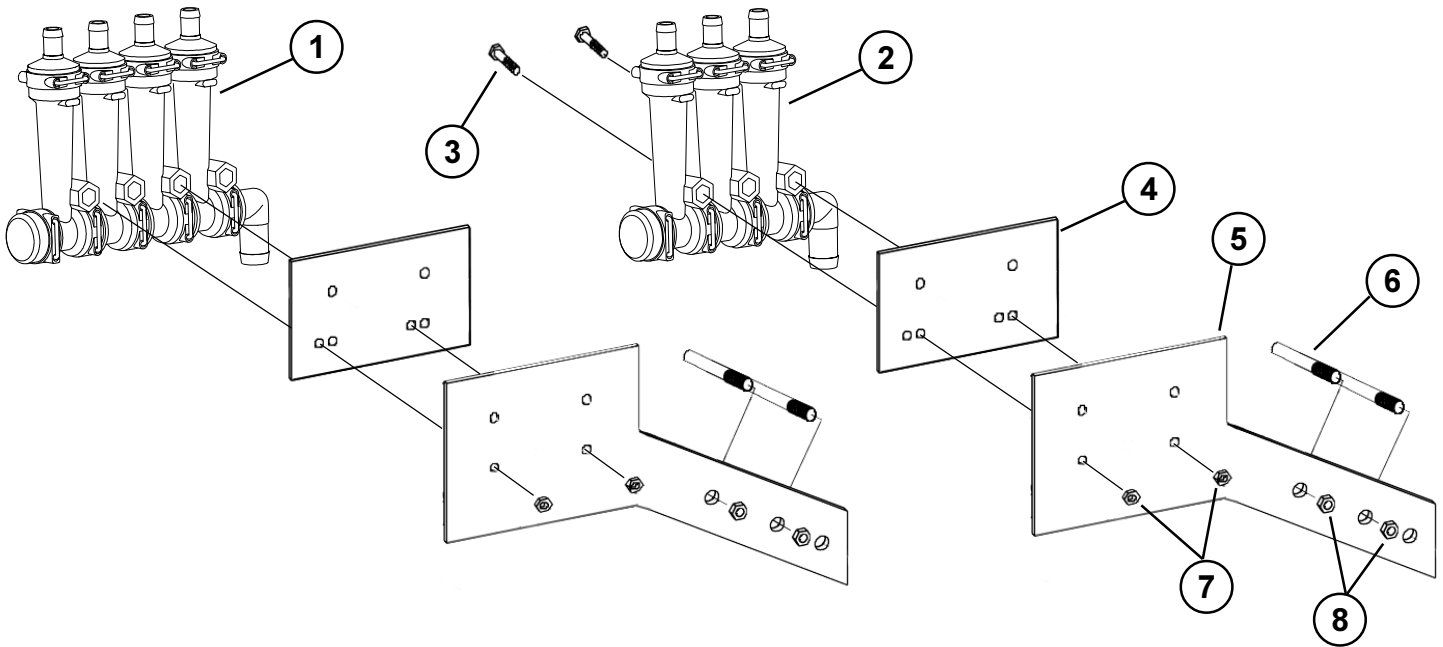
FLOW MONITOR

Serial #'s 90161 to 200000160



Ref	Part No.	Description	Qty
1	94-8721	Flow Monitor Assembly	3
2	95-2032	Manifold - Flow Monitor	3
3	94-8691	Plate - Backing	3
4	321-11	Screw - HH, 1/4" UNC x 2" YZ	4
5	32146-17	Nut - Lock, 1/4" UNC YZ	4
6	94-8722	Swivel Nut	5
7	94-8692	Blank Disk	2
8	94-8723	Elbow - 3/4" FPT - 3/4" HB	1
9	94-8724	Flow Indicator Ball - Steel	4
10	94-8725	Flow Indicator Ball Retainer	4
11	94-8726	Rubber Washer	5
12	100-6852	Swivel Barb	4
13	100-7080	Clamp - Hose Retainer	1
14	3296-59	Nut - Lock, 3/8" UNC	2
15	100-7079	Flow Monitor Mount - Center Boom	1

FLOW INDICATOR - Modular Serial # 20000101 CE and up



Ref	Part No.	Description	Qty
1	100-7077	Flow Indicator Assembly - Boom Extension	2
2	100-7078	Flow Indicator Assembly - Center Section	1
3	321-11	Screw - HH, 1/4" UNC x 2" YZ	4
4	94-8691	Plate - Backing	3
5	100-7079	Mount - Flow Indicator	1
6	100-7080	Clamp - Hose Retainer	1
7	32146-17	Nut - Lock, 1/4" UNC YZ	4
8	3296-59	Nut - Lock, 3/8" UNC	2
9	100-7081	ORS Hose Shank, 1/2"	1
10	100-7082	O-Ring	3
11	100-7083	Ball Retainer	1
12	94-8724	Flow Indicator Ball, Steel	1
13	100-7084	Lock U-Clip	3
14	100-7085	Flow Indicator Body	1
15	100-7086	ORS Hose Shank 90 Degree, 3/4"	
16	100-7087	ORS Cap	



Helping you put quality into play. ®