



MODEL NO. 41355

MANUAL  
SUPPLEMENT**ENCLOSED BOOM**

SERIAL NO. 90161 &amp; UP

**NOTE:** This supplement only applies to Enclosed Booms with serial numbers 90161 and up.

This supplement is provided to update the Enclosed Boom setup and parts manual that is packaged with the Enclosed Boom Mounting Kit (Model 41356 & 41357). Keep this manual with the original manual.

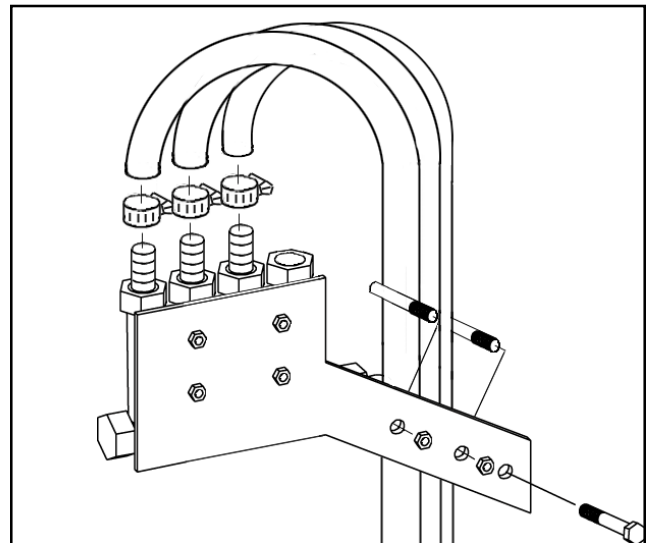
This supplement contains updates to the following sections in the Set-up and Parts Manual:

Center Boom Flow Monitor Installation and Parts  
 Extension Boom Flow Monitor Parts  
 Nozzlebody Assembly Parts  
 Plumbing Group Parts  
 Flow Indicator (Modular) Parts

**SET-UP INSTRUCTION SUPPLEMENT**

This replaces the section describing center boom flow monitor installation.

1. Attach the center boom feed hoses to flow monitor through clamp on mounting bracket. To relieve stress from the hose / flow monitor connection and hose restriction, loop hoses through clamp until hoses form a gentle curve.
2. Secure hoses with clamp.



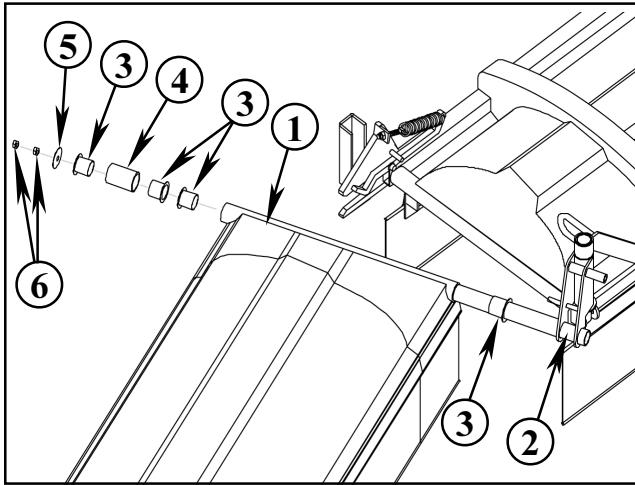


FIG. 5

- |                   |                              |
|-------------------|------------------------------|
| 1. Extension Boom | 4. Breakaway Retainer Collar |
| 2. Pivot Joint    | 5. Pivot Retainer Washer     |
| 3. Bushing        | 6. Jam Nut                   |

3. Lightly grease Right and Left Boom horizontal pivots where bushings will rotate. Assemble Right and Left Booms onto Boom Center Section / Horizontal Pivot Joint as per FIG. 5 ensuring that bushings are properly seated. Torque the wing retainer jam nut to 15 ft. lbs and lock with second jam nut.


**IMPORTANT: The Electric Boom Extension Lifts must be properly adjusted to operate correctly. Improper adjustment could damage the Boom.**

5. Use the Up/Down switches to raise the Boom to the upright position until the Stop on the front corner of the Boom Extension just makes contact with the contact pad on the Center Boom.

6. Measure the length of the Actuator and Adjustment Link. It should be  $30\text{-}1/8'' \pm 1/16''$  from the center of the Actuator Bolt to the center of the Adjustment Link Bolt. (FIG. 12)

7. If the measurement is incorrect, remove the hex hd screw that attaches the Actuator Adjustment Link to the Actuator, loosen the Jam Nut and rotate the Adjustment Link to change the length to the specification. Replace the hex hd screw and nut ensuring that the Adjustment Link can pivot freely. Retighten the Jam Nut, ensuring that the Link rests squarely on the Actuator Link Stop in the raised position.

**NOTE: If the Actuator has less than the above specification this will bend the frame of the Extension Boom when the Actuator is fully contracted. More than specification will cause excessive movement during vertical transport.**



## CAUTION

- The adjustment of the Electric Boom Extension Lifts requires that the Actuator be separated from the Actuator Adjustment Link which leaves the Boom Extension unsupported.
- An unsupported Boom Extension could fall and cause personal injury or death.
- Use additional support for the Boom Extension when adjusting the Electric Boom Extension Actuator.
- It is recommended that the Boom Extension Electric Lift adjustments be done with two people.

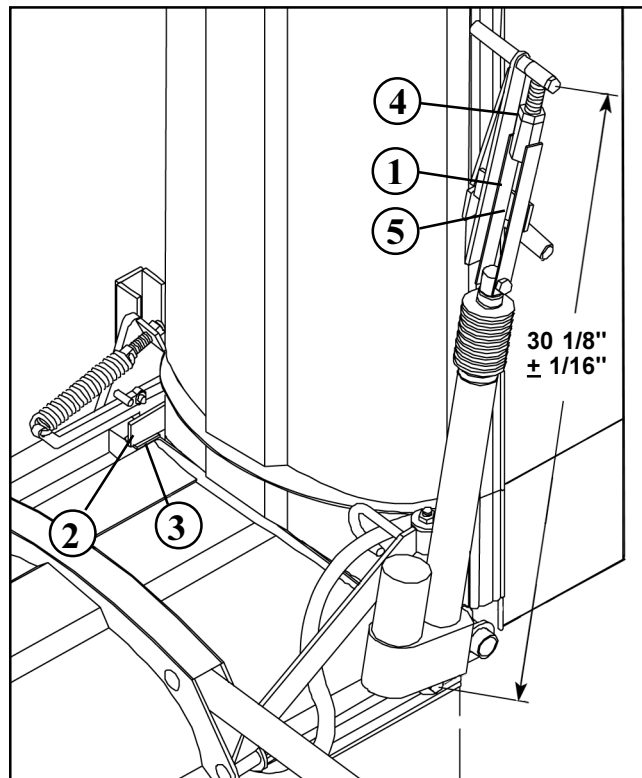
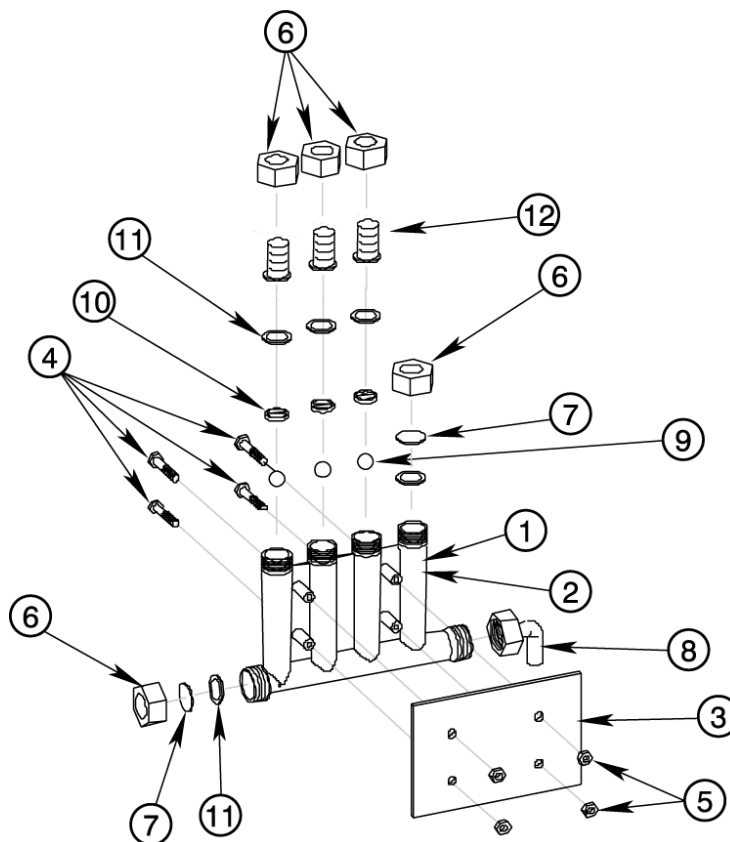


FIG. 12

- |                             |                       |
|-----------------------------|-----------------------|
| 1. Actuator Adjustment Link | 4. Jam Nut            |
| 2. Stop                     | 5. Actuator Link Stop |
| 3. Contact Pad              |                       |

# PARTS SUPPLEMENT

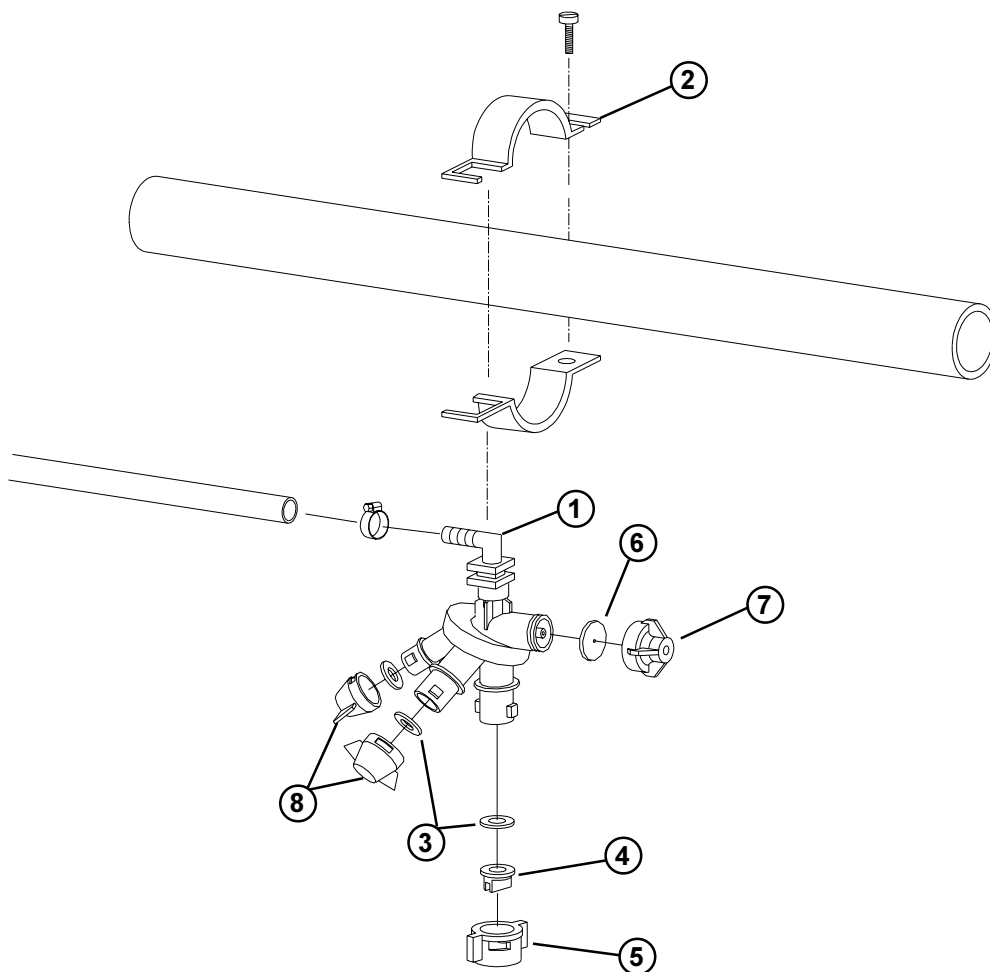
## FLOW MONITOR Serial #'s 90161 and up



Ref	Part No.	Description	Qty
1	94-8721	Flow Monitor Assembly	3
2	95-2032	Manifold - Flow Monitor	3
3	94-8691	Plate - Backing	3
4	321-11	Screw - HH, 1/4" UNC x 2" YZ	4
5	32146-17	Nut - Lock, 1/4" UNC YZ	4
6	94-8722	Swivel Nut	5
7	94-8692	Blank Disk	2
8	94-8723	Elbow - 3/4" FPT - 3/4" HB	1
9	94-8724	Flow Indicator Ball - Steel	4
10	94-8725	Flow Indicator Ball Retainer	4
11	94-8726	Rubber Washer	5
12	100-6852	Swivel Barb	4

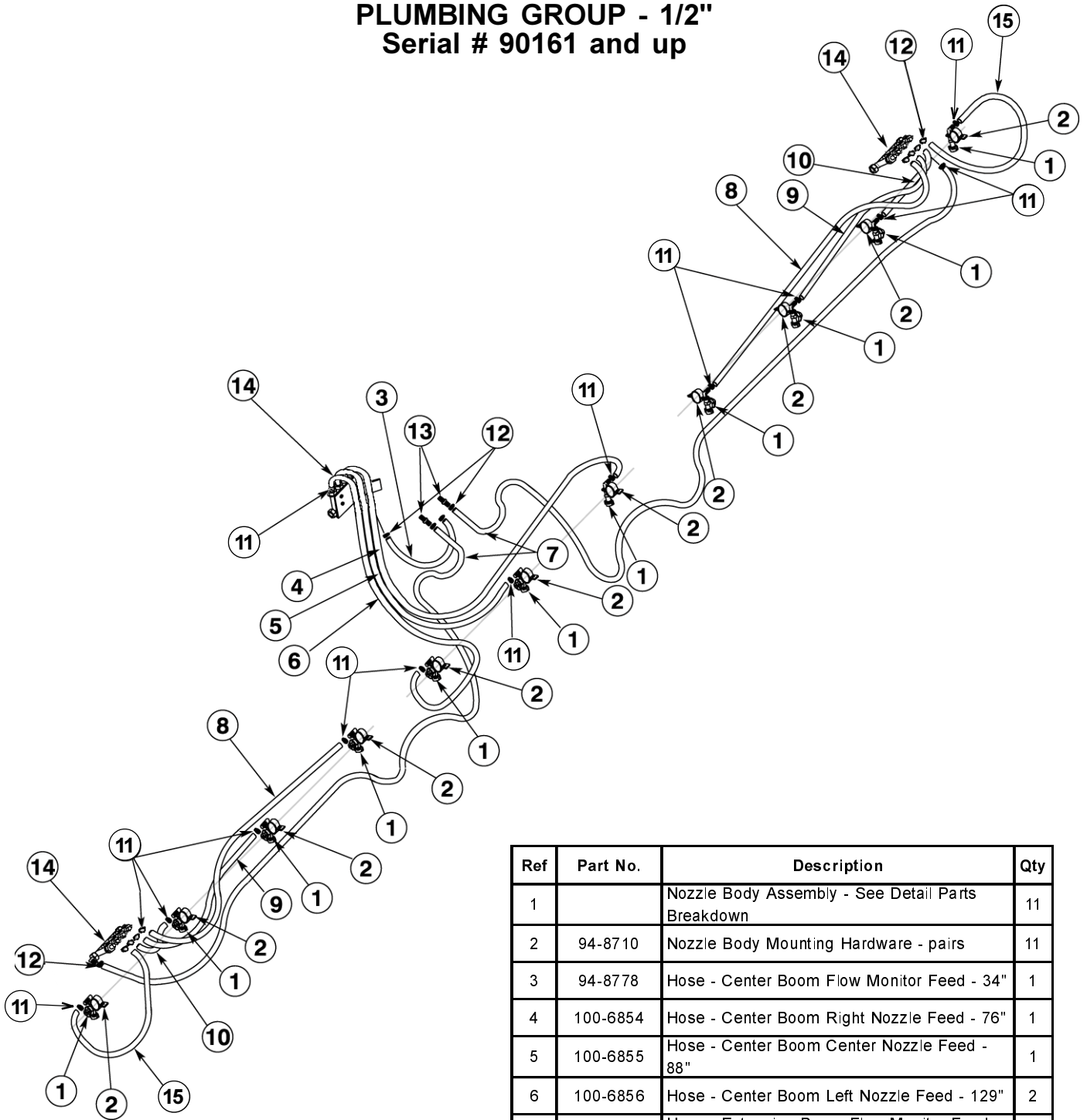
# NOZZLE BODY ASSEMBLY

## Serial #'s 90161 and up



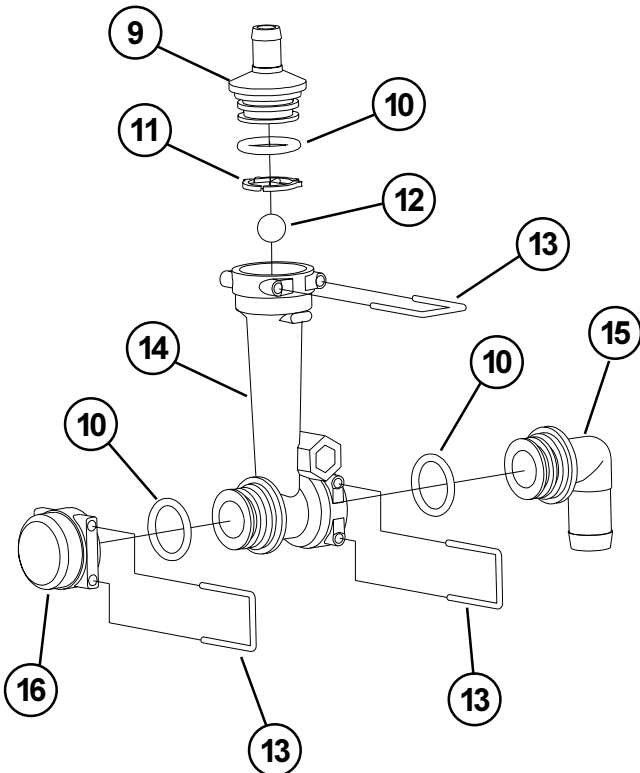
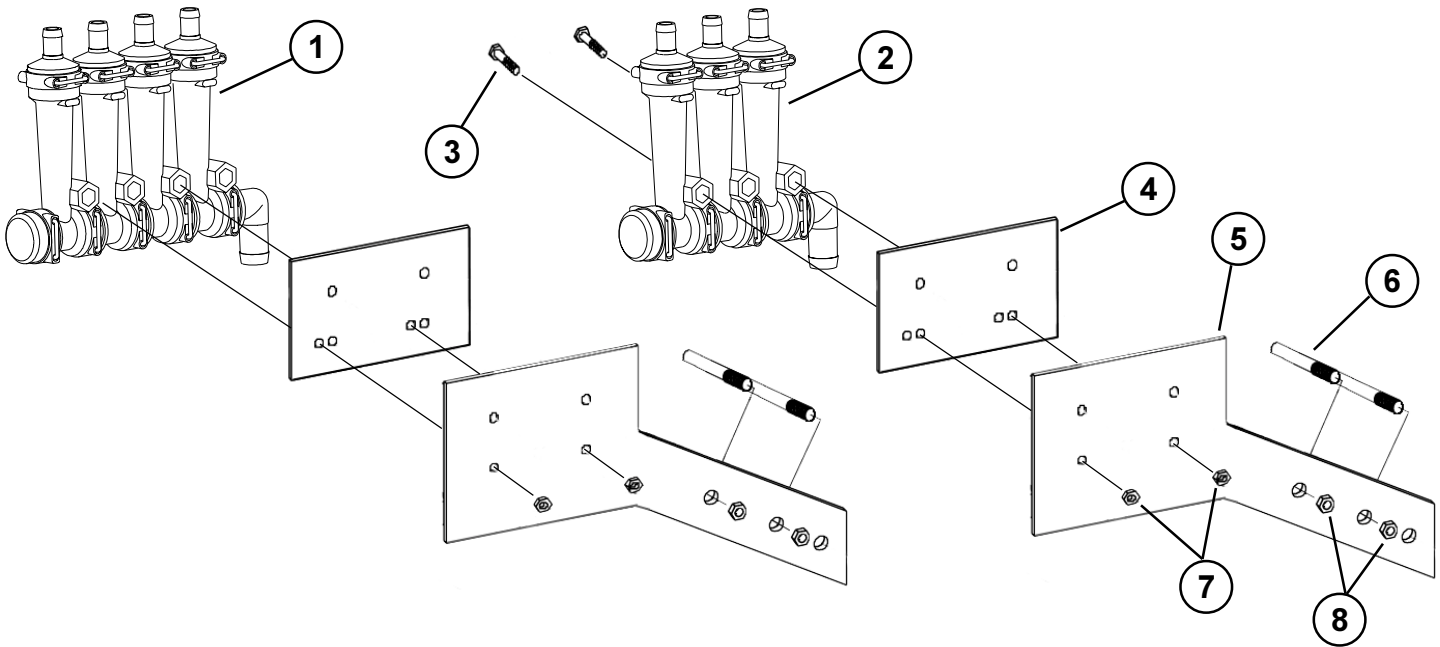
Ref	Part No.	Description	Qty
1	100-6853	Nozzlebody - Triple Type Assy Includes: Nozzlebody - 1 of Diaphragm - 1 of Diaphragm Cap (10 p.s.i.) - 1 of	1
2	94-8710	Nozzlebody Mounting Hardware - pairs	1
3	40998	Gasket - Nozzle	3
4	94-8719	Spray Nozzle - Teejet XR11015SS	1
4	94-8718	Spray Nozzle - Teejet XR11010SS (Standard with Boom)	
4	94-8717	Spray Nozzle - Teejet XR11008VS	
4	94-8716	Spray Nozzle - Teejet XR11006VS	
4	94-8715	Spray Nozzle - Teejet XR11005VS	
4	94-8714	Spray Nozzle - Teejet XR11004VS	1
5	94-8720	Spray Nozzle Retainer Cap	1
6	41003	Diaphragm	1
7	95-2451	Diaphragm Cap - 10 p.s.i.	1
8	95-9187	Spray Nozzle Retainer Cap - Blank	2

**PLUMBING GROUP - 1/2"**  
**Serial # 90161 and up**



Ref	Part No.	Description	Qty
1		Nozzle Body Assembly - See Detail Parts Breakdown	11
2	94-8710	Nozzle Body Mounting Hardware - pairs	11
3	94-8778	Hose - Center Boom Flow Monitor Feed - 34"	1
4	100-6854	Hose - Center Boom Right Nozzle Feed - 76"	1
5	100-6855	Hose - Center Boom Center Nozzle Feed - 88"	1
6	100-6856	Hose - Center Boom Left Nozzle Feed - 129"	2
7	94-8782	Hose - Extension Boom Flow Monitor Feed - 174"	2
8	100-6857	Hose - Extension Boom Inner Nozzle Feed - 69 1/2"	2
9	100-6858	Hose - Extension Boom Second from Inner Nozzle Feed - 49 1/2"	2
10	100-6859	Hose - Extension Boom Second from Outer Nozzle Feed - 31"	2
11	96609	Clamp - Hose, 1/2"	22
12	2412-36	Clamp - Hose, 3/4"	5
13	95-2073	Hose Connector - 3/4"	2
14		Flow Monitor Assy - See Detail Parts Breakdown	
15	100-6860	Hose - Extension Boom Outer Nozzle Feed - 42"	2

# FLOW INDICATOR - Modular Serial # 200000101 CE and up



Ref	Part No.	Description	Qty
1	100-7077	Flow Indicator Assembly - Boom Extension	2
2	100-7078	Flow Indicator Assembly - Center Section	1
3	321-11	Screw - HH, 1/4" UNC x 2" YZ	4
4	94-8691	Plate - Backing	3
5	100-7079	Mount - Flow Indicator	1
6	100-7080	Clamp - Hose Retainer	1
7	32146-17	Nut - Lock, 1/4" UNC YZ	4
8	3296-59	Nut - Lock, 3/8" UNC	2
9	100-7081	ORS Hose Shank, 1/2"	1
10	100-7082	O-Ring	3
11	100-7083	Ball Retainer	1
12	94-8724	Flow Indicator Ball, Steel	1
13	100-7084	Lock U-Clip	3
14	100-7085	Flow Indicator Body	1
15	100-7086	ORS Hose Shank 90 Degree, 3/4"	
16	100-7087	ORS Cap	





*Helping you put quality into play.®*