



Wing Deck Drive Belt Clutch Kit

Groundsmaster® 455-D

Part No. 106-1053

Form No. 3329-597

Installation Instructions

Note: Determine the left and right sides of the machine from the normal operating position.

This kit contains a replacement electric clutch assembly and new clutch retainer brackets for both the left and right clutches.

Loose Parts

Note: Use the chart below to identify parts used for assembly.

Description	Qty.	Use
Electric Clutch-Brake	1	Install the Wing Deck Drive Belt Clutch Kit
Clutch Bracket-L.H.	1	
Clutch Bracket-R.H.	1	
Capscrew-5/16-18 x 3-1/4 inch	4	
Washer-11/32 x 11/16	8	
Lock nut-5/16-18	4	
Capscrew-7/16-20 x 1-1/2 inch	2	
Spacer	6	
Washer	2	
Lock nut	2	
Cable Tie	2	

1. Lower the cutting unit, engage the parking brake, stop the engine, and remove the ignition key.
2. Remove the deck cover from the top of the center cutting unit.
3. Unplug the main wire harness connector from the clutch wire harness (Fig. 1).

Note: All figures show the left clutch bracket

4. Cut and remove the cable tie securing the clutch wire to the existing wire harness shield (Fig. 1)

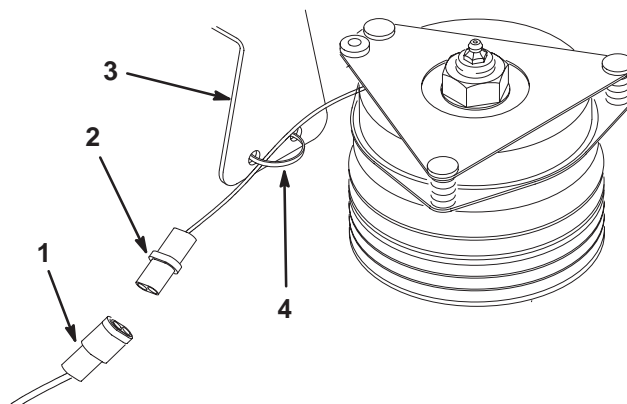


Figure 1

- | | |
|------------------------|------------------------|
| 1. Wire harness | 3. Wire harness shield |
| 2. Clutch wire harness | 4. Cable tie |

5. Remove the hair pin cotter securing the clutch rod to deck (Fig. 2). Unhook the clutch rod from the deck. Remove and discard the grommet from the hole in the deck and in the clutch plate.

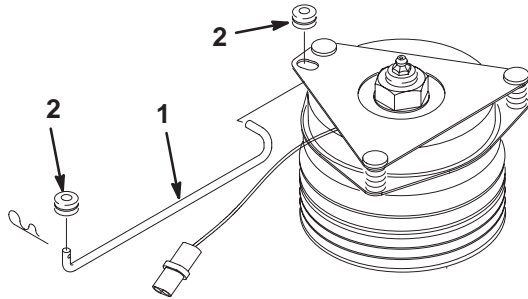


Figure 2

1. Clutch rod
2. Grommet

Note: If replacing the electric deck clutch, proceed to the next step. Otherwise, proceed to step 15 for the clutch bracket installation.

6. Raise the cutting unit to the highest position, stop the engine, and remove the ignition key. Engage locking latches to prevent cutting unit from accidentally falling.
7. Release the belt tension. Refer to the Operator's Manual for procedure.
8. Remove the belt(s) from the spindle pulley in which the clutch will be replaced. Refer to the Operator's Manual for procedure.
9. Remove the 6 flange head screws and locknuts securing the spindle housing to the cutting unit (Fig. 3). Slide the clutch and spindle housing assembly out the bottom of the cutting unit.
10. Remove the nut and the thrust washer securing the clutch to the spindle shaft (Fig. 3). Remove the clutch.

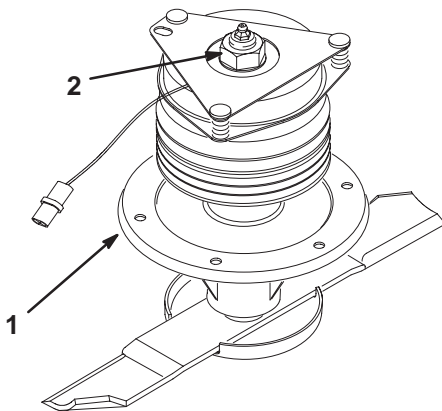


Figure 3

1. Spindle housing
2. Nut & thrust washer

11. Mount the new clutch to the spindle shaft with the thrust washer and nut previously removed. Torque the nut to 150–170 ft-lb.
12. Reinstall the spindle housing to the cutting unit with the 6 flange head screws and locknuts previously removed (Fig. 3). Torque fasteners to 27–33 ft-lb.
13. Reinstall the belt(s) to spindle pulley. Refer to the Operator's Manual for procedure.
14. Adjust belt tension. Refer to the Operator's Manual for procedure.
15. Remove the 2 screws securing the wire harness shield and cover hinge to the deck frame tube (Fig. 4). Discard the wire harness shield.

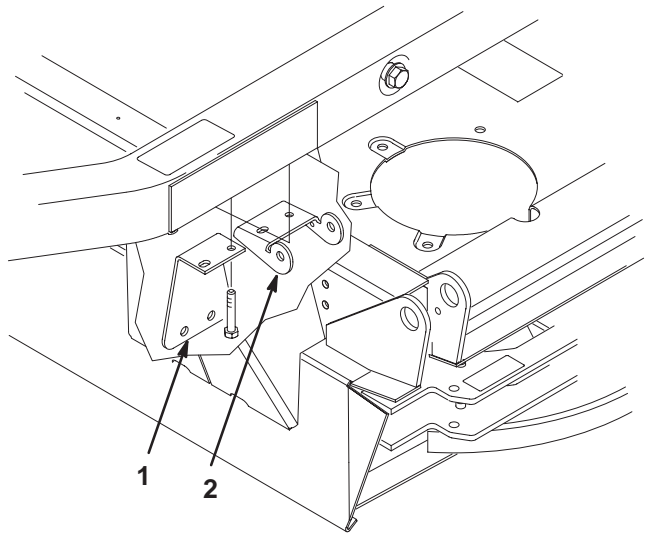


Figure 4

1. Wire harness shield
2. Hinge

16. Using the dimensions shown in figure 5, locate, mark and drill (2) 11/32 inch holes thru both the walls of the deck frame tube. The new top holes should align with the current hinge mounting holes in the bottom of the tube.

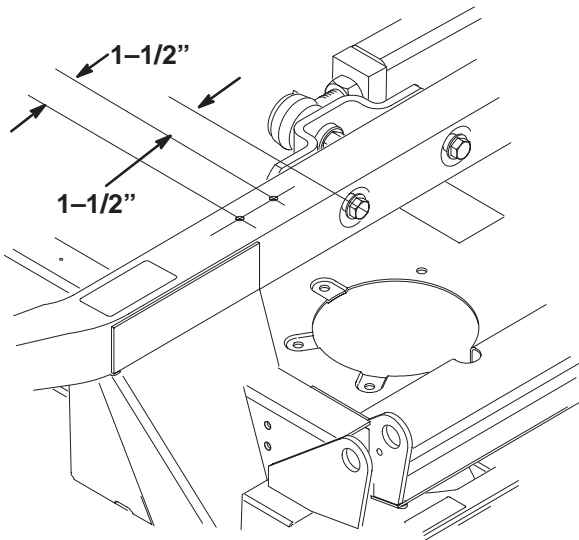


Figure 5

17. Mount the new clutch bracket and the previously removed hinge to the frame tube with (2) capscrews (5/16-18 x 3-1/4 inch), 4 washers (11/32 x 11/16) and 2 locknuts (5/16-18). Position the washers next to the screw head and the nut (Fig. 6). Make sure to use the correct bracket.

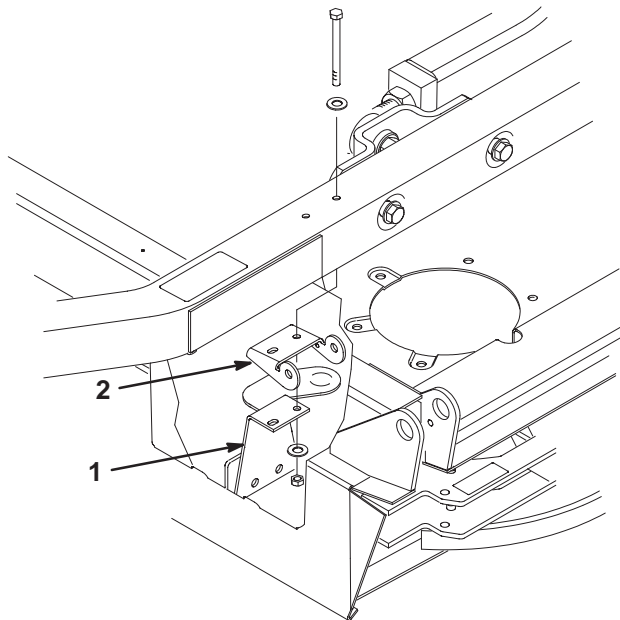


Figure 6

1. Clutch bracket (L.H.) 2. Hinge

18. Secure the top of the clutch to the clutch bracket with a capscrew (7/16-20 x 1-1/2 inch), 3 washers, a spacer and a lock nut (7/16-20). Position the components as shown in figure 7.

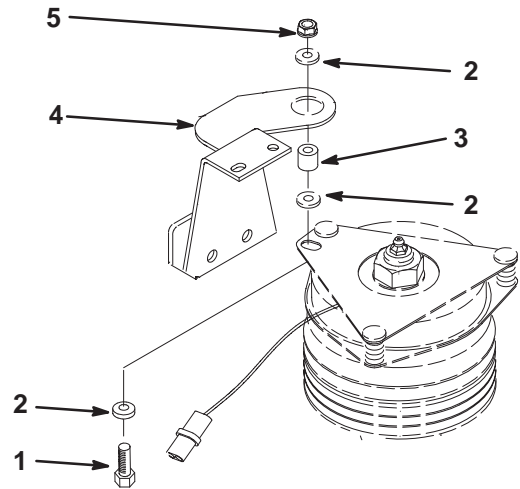


Figure 7

1. Capscrew 4. Clutch bracket (L.H.)
2. Washer 5. Locknut
3. Spacer

19. Secure the clutch wire harness to clutch bracket with a cable tie as shown in figure 8.

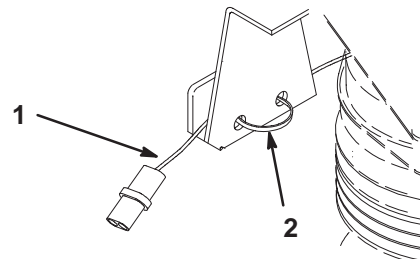


Figure 8

1. Clutch wire harness 2. Cable tie

20. Plug the clutch wire harness into the traction unit wire harness.

21. Repeat the procedure on opposite side the of cutting unit.

22. Reinstall the belt cover.

