



Versa Vac

Model No. 07053 – 230000201 and Up

Parts Catalog

Ordering Replacement Parts

To order replacement parts, please supply: the part number, the quantity, and the description of each part desired.

Understanding Reference Numbers

Each identified part in an illustration has a reference number. The reference number for a part also appears in the parts list, along with other information about the part.

This catalog uses two special reference number formats, one to indicate parts in a service assembly and another to indicate the quantity of a given part in an illustration.

Service Assembly Reference Numbers

Parts in service assemblies have reference numbers in the form **a:b**. The **a** represents the reference number of the entire service assembly and the **b** represents a sequential number unique to each part within the service assembly.

For example, a wheel assembly might be identified by reference number **6**, the tire by **6:1**, the valve by **6:2**, and the wheel by **6:3**. When you order the assembly identified by reference number **6**, you receive all parts identified by reference numbers **6:1**, **6:2**, and **6:3**. However, you may also order any part individually.

Reference numbers of this type appear in illustrations and in part lists.

Reference Numbers Indicating Quantity

In an illustration, if a reference number indicates more than one part, the reference number has the form **nX y**. The **n** represents the quantity of the part, the **X** is the multiplication symbol, and the **y** represents the reference number.

For example, in an illustration, the reference number **2X 37** means that two of the parts identified by reference number **37** are indicated.

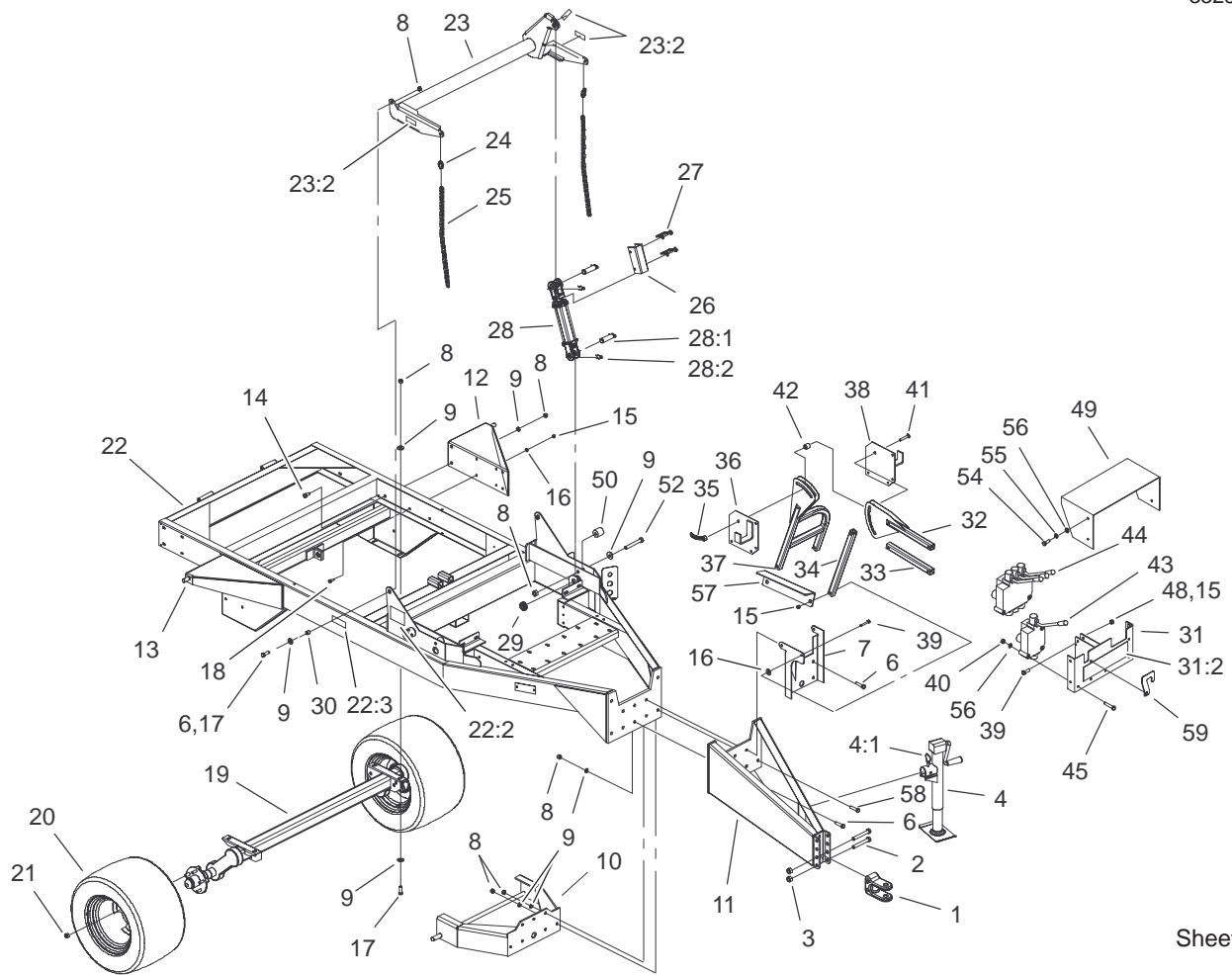
Contents

Description	Page	Description	Page
Frame and Axle Assembly	3	Right Hand Sidewall Assembly	9
Impeller Assembly	5	Left Hand Sidewall Assembly	10
Drive Assembly	6	Door Assembly	11
Power–Take–Off Shaft and Shield Assembly ..	7	Cylinder Assembly	12
Sidewall Assembly	8	Hydraulic Schematic	13

Part Description Abbreviations

Part descriptions in this catalog may include the following abbreviations.

Abbreviation	Meaning	Abbreviation	Meaning
AR	as required	HYD	hydraulic
ASM	assembly	INC	incorporated
CARR	carriage	LH	left hand
DEG	degrees	NI	nylon insert
FH	flat head	PPH	Phillips pan head
GA	gauge	PTH	Phillips truss head
HF	hex flange	PTO	power take off
HH	hex head	RH	right hand
HHF	hex head flange	SFH	slotted fillister head
HLH	hex lag head	SHH	slotted hex head
HJ	hex jam	SQH	square head
HOC	height-of-cut	SHWH	slotted hex washer head
HS	hex socket	SPH	slotted pan head
HSBH	hex socket button head	SRH	slotted round head
HSFH	hex socket flat head	STD	standard
HSH	hex socket head	TAP	self tapping
HWH	hex washer head	TTH	Torx truss head
HWHTF	hex washer head thread forming	WH	wing head

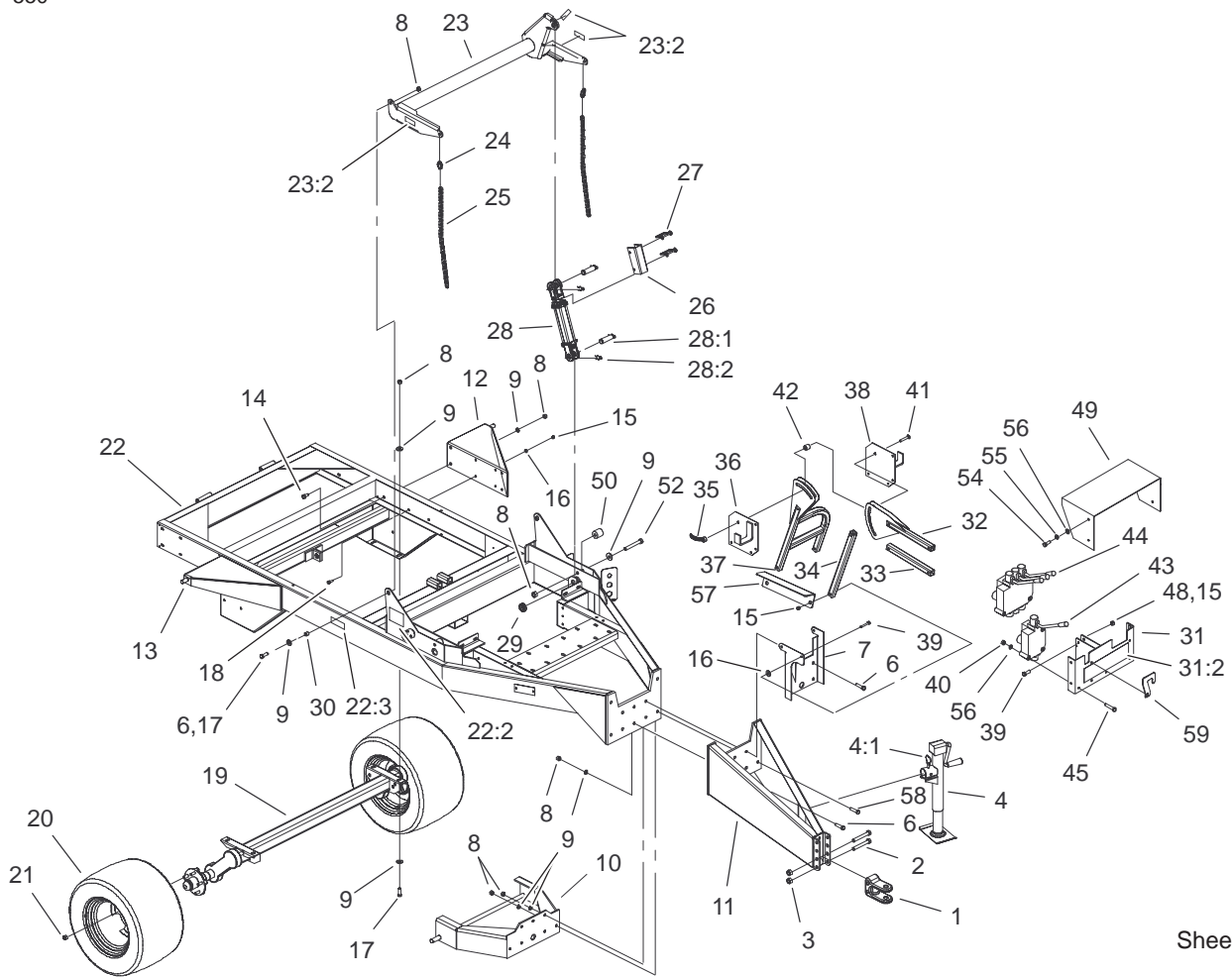


Sheet No.:2

Frame and Axle Assembly

Ref. No.	Part No.	Qty.	Description
1	SV112-02-03	1	Hitch-Clevis
2	327-23	2	Screw-HH
3	3296-53	2	Nut-Lock, NI
4	SVP15300	1	Jack
4:1	55-7190	1	Pin And Chain ASM
6	325-8	5	Screw-HH
7	SVA17500-03	1	Base-Stand
8	3296-23	21	Nut-Lock, NI
9	3256-6	24	Washer-Flat
10	SVA11200-03	1	Deck Mount ASM
11	SV198-00-03	1	Hitch
12	SVA11300-03	1	Bracket-Door, Left ASM
13	SVA11400-03	1	Bracket-Door, Right ASM
14	325-5	4	Screw-HH
15	3296-39	17	Nut-Lock, NI
16	3256-24	17	Washer-Flat
17	325-6	4	Screw-HH
18	323-6	8	Screw-HH
19	SVP20000	1	Axle-Torflex
20	SVP15000	2	Tire And Wheel ASM
21	242-50	10	Nut-Lug
22	106-0189	1	Frame
22:2	106-0167	1	Decal-Caution

Ref. No.	Part No.	Qty.	Description
22:3	106-0162	2	Decal-Caution Stay Clear
23	106-0190	1	Arm-Lift
23:2	93-6674	3	Decal-Warning
24	CSP15000	2	Link-Quick
25	SV139-00	2	Chain-Link
26	SV158-00-03	1	Channel-Lock
27	PF244-00	2	Pin-Wire, Lock
28	SVP14700	1	Cylinder-ASM
28:1	PSP10301	2	Pin
28:2	PSP10302	4	Keeper
29	PB502-00	1	Collar-Set
29:1	3246-1	1	Screw-Set
30	CS130-00	2	Spacer
31	106-0186	1	Mount-Valve
31:2	106-0183	1	Decal-Control Panel
32	SVA17100-03	1	Stand-Valve
33	SVA17200-03	1	Tube-Horizontal
34	SVA17000-03	1	Tube-Vertical
35	SVA18500	1	Handle-Locking
36	SVA17400-03	1	Hanger-Hose, Right
37	SVA16900-03	1	Stand-Vavle
38	SVA17900-03	1	Hanger-Hose, Left
39	323-11	9	Screw-HH
40	3296-29	6	Nut-Lock, NI

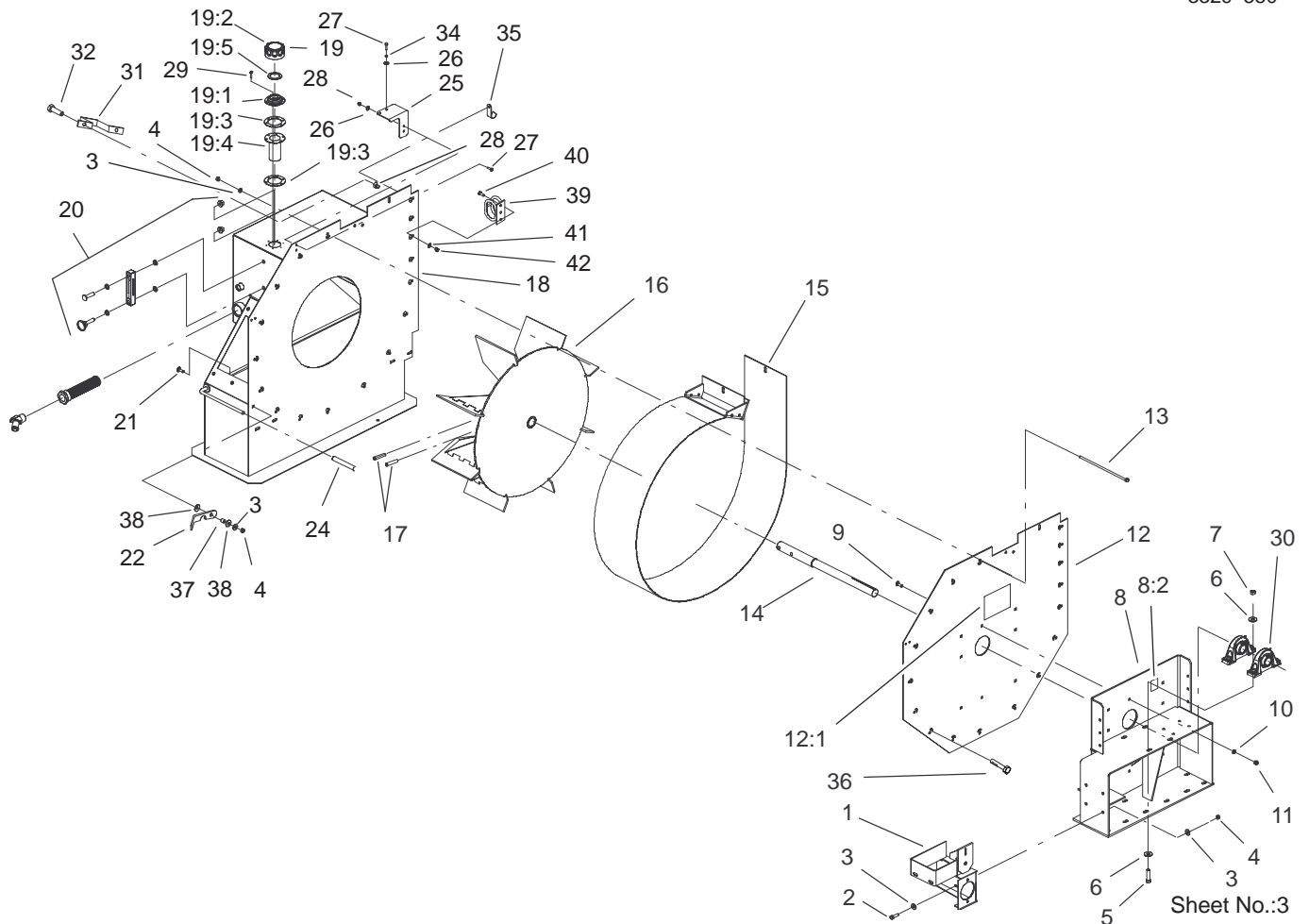


Sheet No.:2

Frame and Axle Assembly (Continued)

Ref. No.	Part No.	Qty.	Description
41	3231-31	1	Screw-CARR
42	SVA17700	1	Spacer
43	106-0168	1	Valve-Control, Single Spool
44	106-0169	1	Valve-Control, Three Spool
45	322-13	6	Screw-HH
49	106-0171-03	1	Guard-Hose
50	SV136-00-03	2	Roller-Chain
52	325-12	2	Screw-HH
54	322-2	4	Screw-HH
55	3253-4	4	Washer-Lock
56	3256-23	10	Washer-Flat
57	105-4855-03	1	Support
58	325-10	6	Screw-HH
59	105-4920-03	1	Lockout-Valve

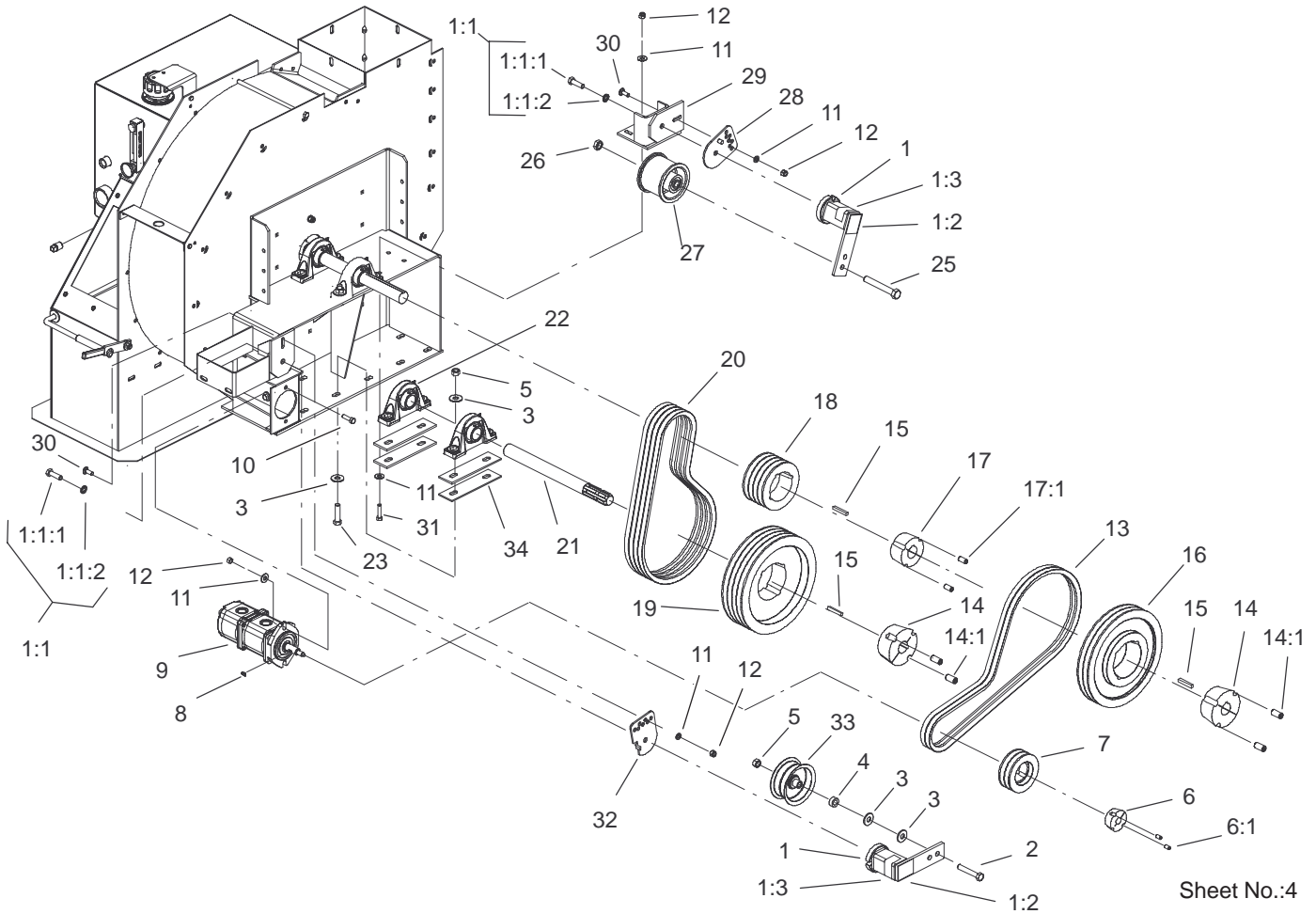
Ref. No.	Part No.	Qty.	Description



Impeller Assembly

Ref. No.	Part No.	Qty.	Description
1	105-4868-01	1	Pump Mount ASM
2	323-7	4	Screw-HH
3	3256-4	21	Washer-Flat
4	3296-39	22	Nut-Lock, NI
5	325-8	4	Screw-HH
6	3256-6	8	Washer-Flat
7	3296-23	4	Nut-Lock, NI
8	106-0191	1	Mount-Drive
8:2	105-4586	1	Decal-Shield
9	3231-2	8	Screw-CARR
10	3256-4	8	Washer-Flat
11	3296-39	8	Nut-Lock, NI
12	106-0206	1	Panel-Back
12:1	66-6140	1	Decal
13	106-0184	15	Screw-HH
14	SV327-00	1	Shaft-Impeller
15	SV102-00-01	1	Band ASM
16	SV201-00-01	1	Impeller ASM
17	LDB14600	2	Pin-Spiral
18	SV305-00-01	1	Funnel ASM
19	95-7004	1	Filler Cap ASM
19:1	353-961	1	Flange
19:2	353-962	1	Cap ASM
19:3	353-963	2	Gasket
19:4	62-2610	1	Strainer-Cap, Filler
19:5	76-1720	1	Gasket-Cap, Filler

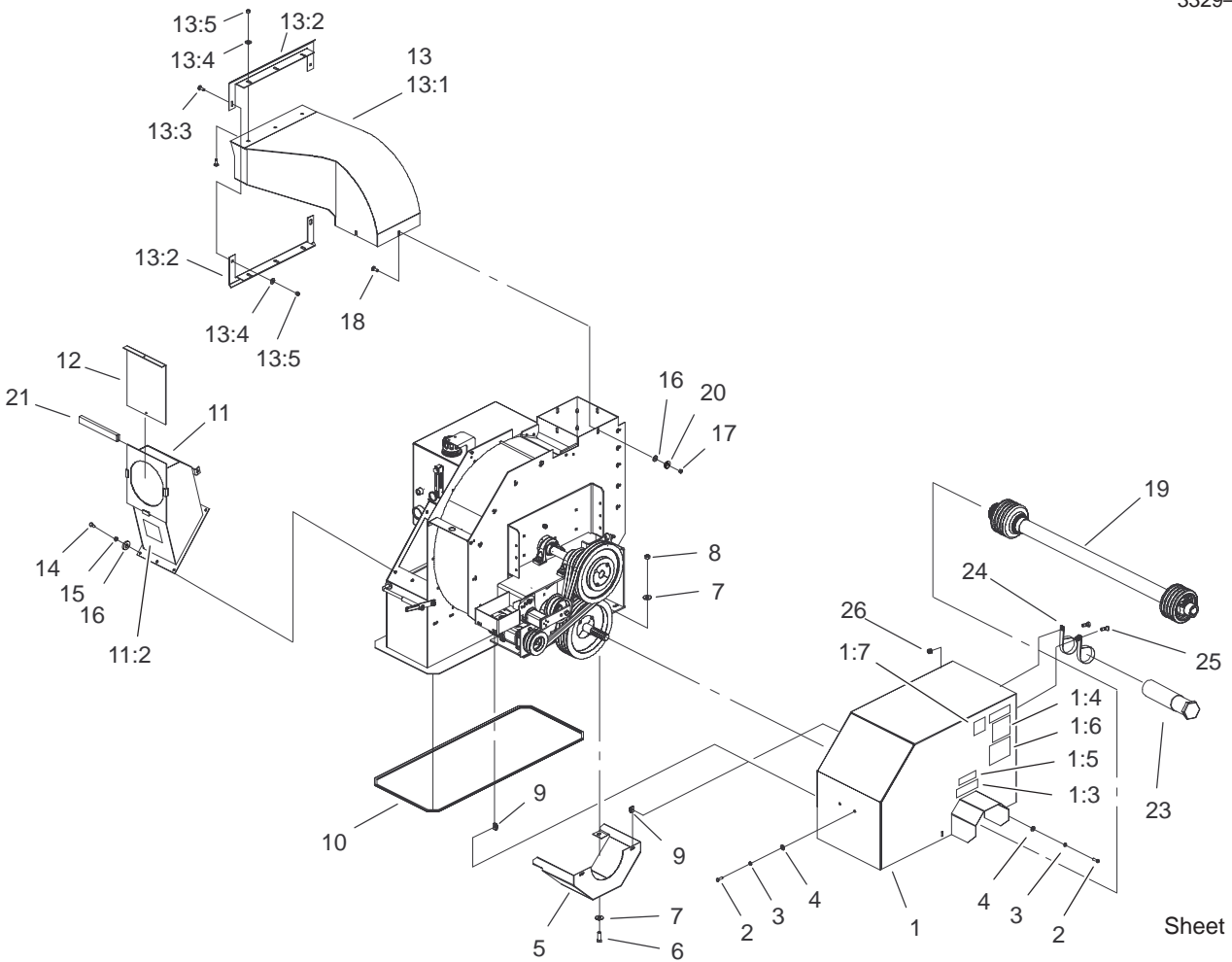
Ref. No.	Part No.	Qty.	Description
20	SVB14700	1	Thermometer ASM
21	3231-28	1	Screw-CARR
22	106-0236-01	1	Latch
24	PF225-00	1	Cover-Handle
25	SVB15900-01	1	Mount-Filter
26	3256-22	6	Washer-Flat
27	321-4	4	Screw-HH
28	3296-42	4	Nut-Lock, NI
29	32144-89	6	Screw-Forming, Thread
30	BLP10200	2	Bearing-Pillow Block
30:1	302-2	1	Fitting-Grease
30:2	3246-17	1	Setscrew-HSH
31	CGC10900-01	1	Clamp-Capacitor
32	321-4	2	Screw-HH
34	3253-3	2	Washer-Lock
35	SVB17600-01	1	Hose Hanger
36	105-4865	2	Screw-HH
37	92-9025	1	Spacer
38	3290-473	2	Washer-Belleville
39	99-5621	1	Guide-Hose
40	322-3	2	Screw-HH
41	3256-23	2	Washer-Flat
42	3296-29	2	Nut-Lock, NI



Drive Assembly

Ref. No.	Part No.	Qty.	Description
1	105-0667	2	Tensioner-Idler
1:1:1	33116-040	1	Screw-HH
1:1:2	3253-7	1	Washer-Lock
1:2	105-0668	1	Decal-Align
1:3	105-0669	1	Decal-Angle
2	325-12	1	Screw-HH
3	3256-6	10	Washer-Flat
4	GF213-00	1	Spacer
5	3296-23	5	Nut-Lock, NI
6	SVA19300	1	Bushing-Taper Lock
6:1	3247-4	2	Screw-Set
7	SBC18000	1	Sheave-Taper Lock
8	3257-32	1	Key-Woodruff
9	SVA18100	1	Pump-HYD, Double Gear
*9:1	SVA18101	1	Seal Kit (Front Pump-140s6)
*9:2	SVA18102	1	Seal Kit (Back Pump-070s)
10	323-7	6	Screw-HH
11	3256-4	12	Washer-Flat
12	3296-39	8	Nut-Lock, NI
13	SVB13600	2	V-Belt
14	BLP11200	2	Bushing-Taper Lock
14:1	105-0683	2	Screw-Set
15	61-004-0451	3	Key-Square

Ref. No.	Part No.	Qty.	Description
16	SVB13200	1	Pulley-Taper Lock
17	FBJ10700	1	Bushing-Taper Lock
17:1	3248-6	2	Setscrew
18	LDB14700	1	Sheave-Taper, Lock
19	LDB12400	1	Pulley-Taper, Lock
20	SBC17000	4	V-Belt
21	SVB13000	1	Shaft-Input
22	BLP10200	2	Bearing-Pillow Block
22:1	302-2	1	Fitting-Grease
22:2	3246-17	1	Setscrew-HSH
23	325-12	4	Screw-HH
25	3214-15	1	Screw-HH
26	3220-6	1	Nut-Jam
27	105-4821	1	Idler-Pulley
28	105-4839	1	Stabilizer-Tensioner
29	SV286-00-01	1	Bracket-Lovejoy
30	3231-25	2	Screw-CARR
31	323-8	4	Screw-HH
32	105-4835	1	Stabilizer-Tensioner
33	FBJ11100	1	Pulley-Idler
34	SVB19500-01	4	Shim

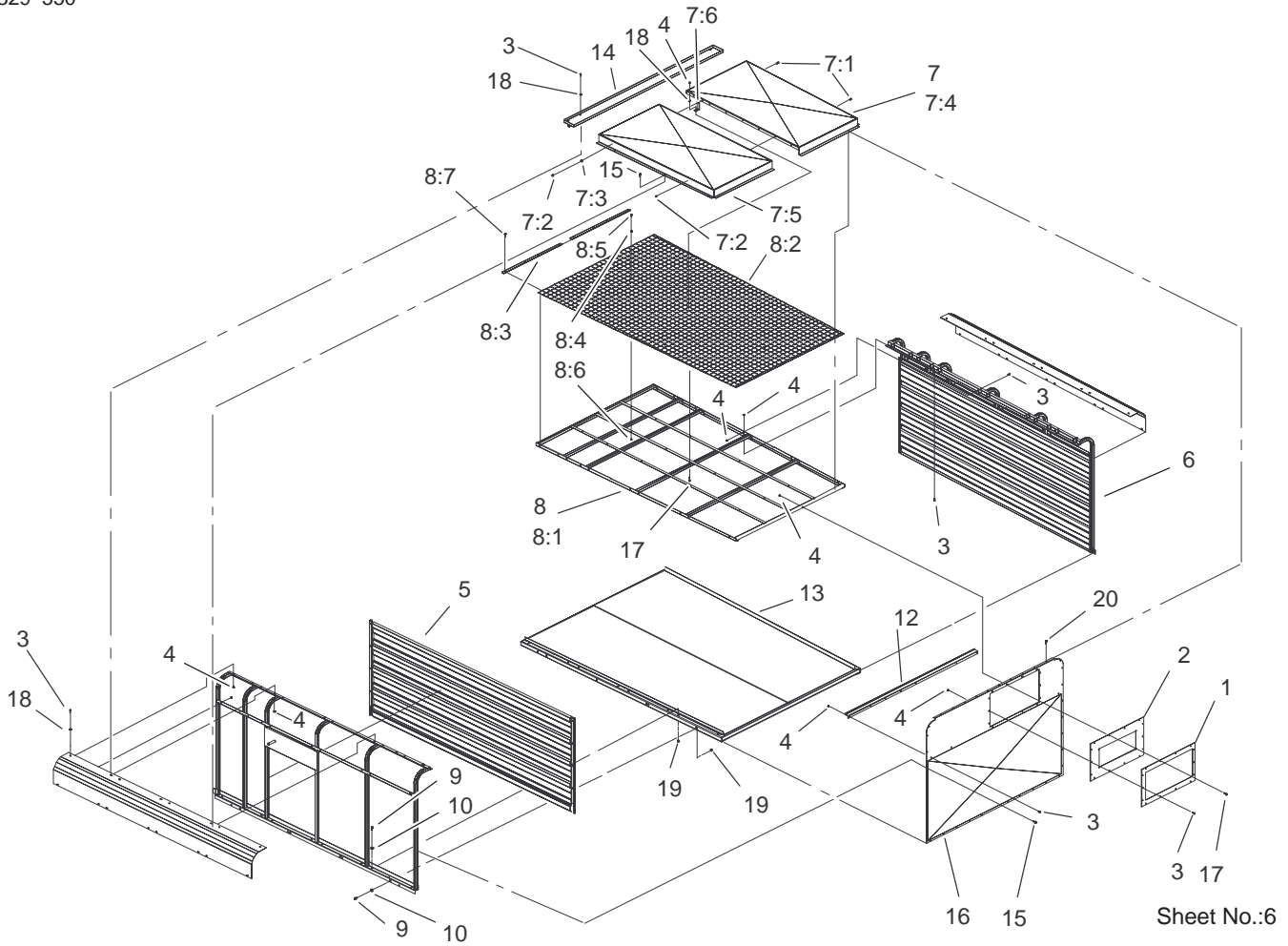


Sheet No.:5

Power-Take-Off Shaft and Shield Assembly

Ref. No.	Part No.	Qty.	Description
1	106-0193	1	Shield-Drive
1:3	105-0628	1	Decal-Caution, U-Joint
1:4	105-4587	1	Decal-Caution, Ce
1:5	105-0627	1	Decal-Caution
1:6	106-0163	1	Decal-Danger, Blowers
1:7	105-4586	1	Decal-Shield
2	322-5	6	Screw-HH
3	3253-4	6	Washer-Lock
4	3256-23	6	Washer-Flat
5	105-4842-01	1	Guard-Pulley
6	325-6	2	Screw-HH
7	3256-6	4	Washer-Flat
8	3296-23	2	Nut-Lock, NI
9	CSP11700	4	Nut-Thin, Tinnerman
10	105-4843	1	Trim
11	106-0192	1	Chute-Vac
11:2	106-0166	1	Decal-Danger, Blower
12	SV143-00-01	1	Door-Hose
13	SVA14900	1	Spout ASM
13:1	SV216-00-01	1	Transition-Spout ASM
13:2	SVA10200-01	2	Seal-Dust
13:3	3231-2	8	Screw-CARR
13:4	3256-24	8	Washer-Flat
13:5	3296-39	8	Nut-Lock, NI

Ref. No.	Part No.	Qty.	Description
14	323-6	6	Screw-HH
15	3253-21	6	Washer-Lock
16	3256-4	10	Washer-Flat
17	3217-7	4	Nut-Hex
18	3231-2	4	Screw-CARR
19	105-4935	1	Driveshaft ASM
20	3253-21	4	Washer-Lock
21	106-0207	1	Trim-Chute Vac
23	74-0720	1	Tube-Manual
24	2412-133	2	R-Clamp
25	323-5	2	Screw-HH
26	3296-39	2	Nut-Lock, NI

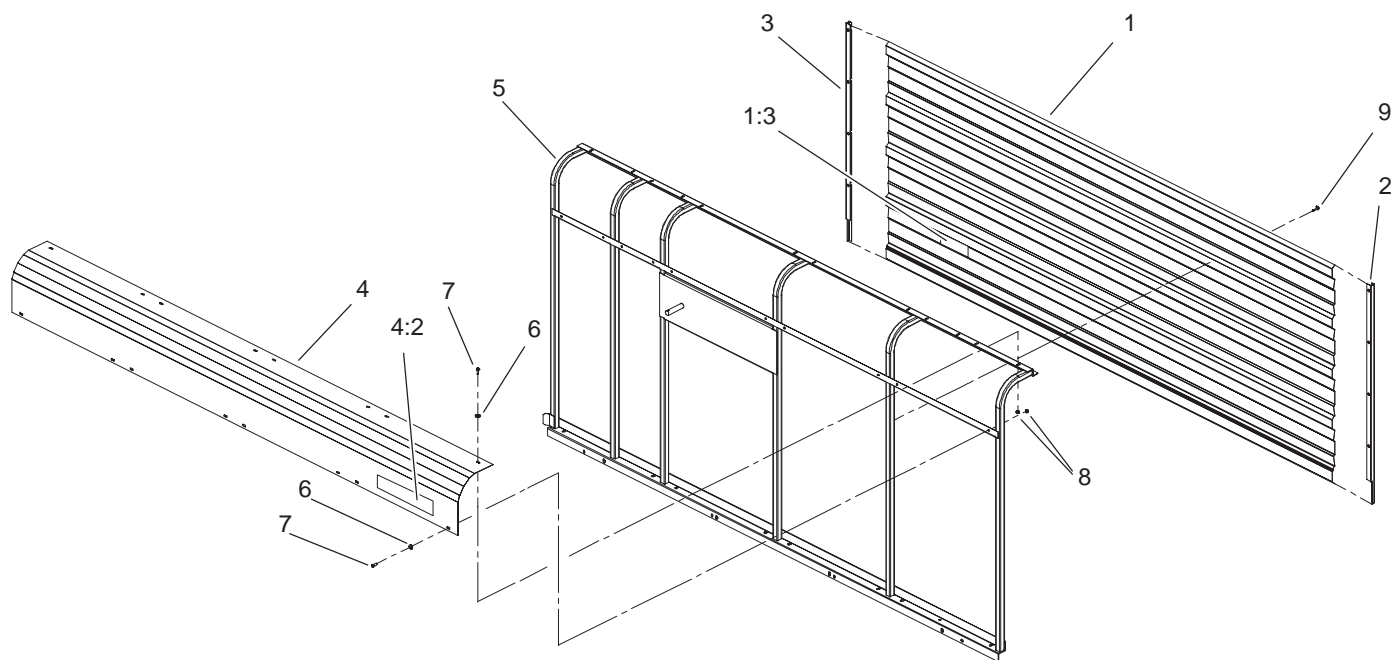


Sidewall Assembly

Ref. No.	Part No.	Qty.	Description
1	SVA10600-01	1	Plate
2	SVA10400	1	Gasket-Dust
3	321-4	69	Screw-HH
4	3296-42	74	Nut-Lock, NI
☆5		1	RH Sidewall ASM
☆6		1	LH Sidewall ASM
☆7		1	Dust Cap ASM
7:1	321-4	8	Screw-HH
7:2	3296-42	8	Nut-Lock, NI
7:3	3256-2	1	Washer-Flat
7:4	VT309-0L-01	1	Dust-Cover, Left
7:5	VT309-0R-01	1	Dust-Cover, Right
7:6	VT340-00-01	1	Support-Dust Cover
☆8		1	Roof-Trailer ASM
8:1	VT306-00-01	1	Roof Frame ASM
8:2	VT307-00	2	Screen-Roof
8:3	VT308-00-01	2	Trim-Edge
8:4	3256-22	15	Washer-Flat
8:5	321-4	15	Screw-HH
8:6	3296-42	15	Nut-Lock, NI
8:7	105-0618	8	Screw
9	323-6	24	Screw-HH
10	3256-24	24	Washer-Flat
12	SVA12000-01	1	Brace-Front
13	VT301-00	1	Frame-Floor
14	SVA11900-01	1	Hinge Mount ASM

Ref. No.	Part No.	Qty.	Description
15	105-0618	28	Screw
16	VT310-00-01	1	Sheet-Trailer, Front
17	321-10	5	Screw-HH
18	3256-22	57	Washer-Flat
19	3290-357	24	Nut-HHF
20	105-4848	14	Screw

☆ Not serviced separately

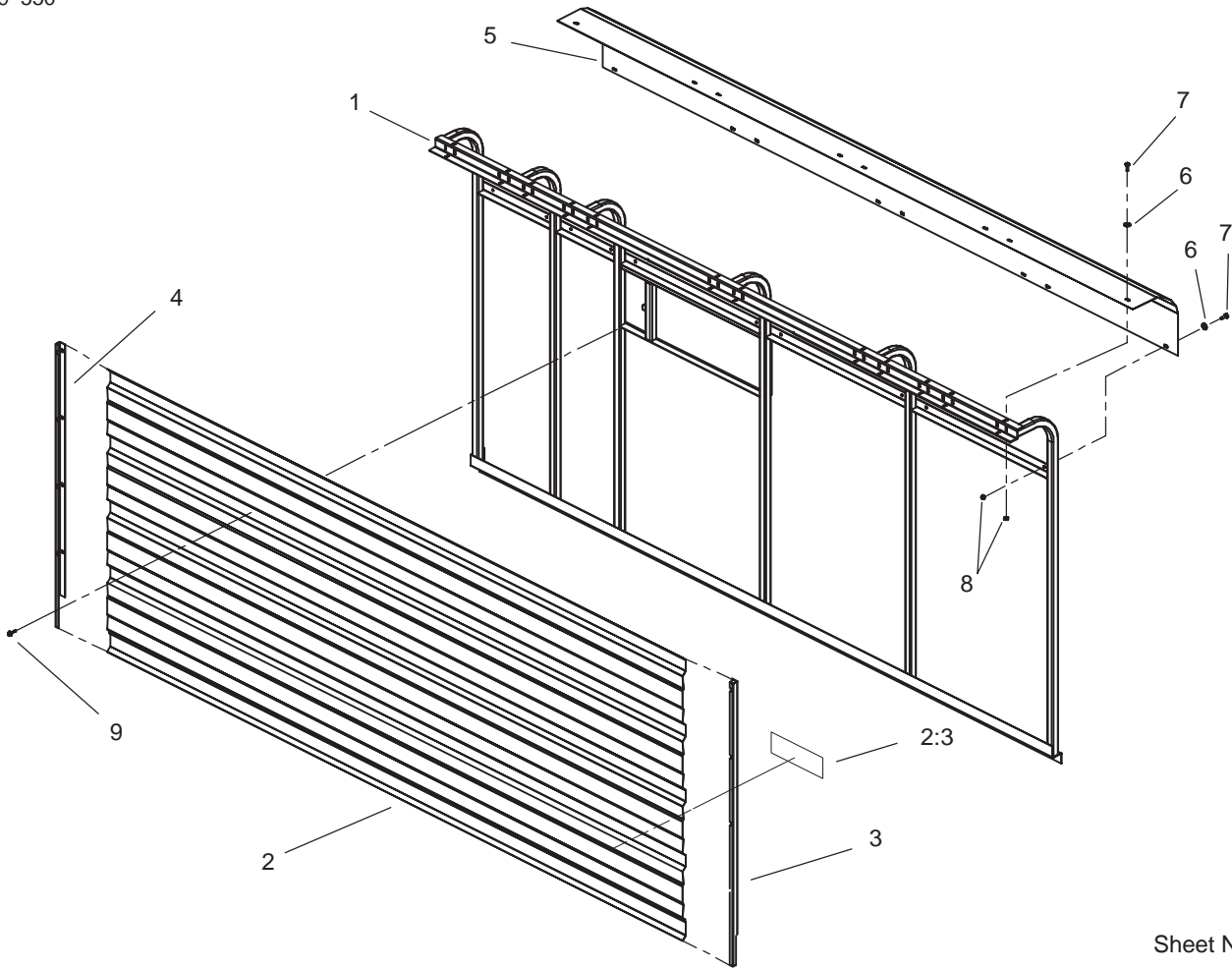


Sheet No.:A1

Right Hand Sidewall Assembly

Ref. No.	Part No.	Qty.	Description
1	106-0174	1	Sheet-Sidewall, RH
1:3	106-0162	1	Decal-Caution Stay Clear
2	VT130-0R-01	1	Trim-Enclosure, Right
3	VT130-0L-01	1	Trim-Enclosure, Left
4	106-0173	1	Corner-Roof, RH
4:2	105-0738	1	Decal-RH
5	VT203-0R-01	1	Right Wall ASM
6	3256-22	8	Washer-Flat
7	321-4	8	Screw-HH
8	3296-42	8	Nut-Lock, NI
9	105-0618	24	Screw

Ref. No.	Part No.	Qty.	Description

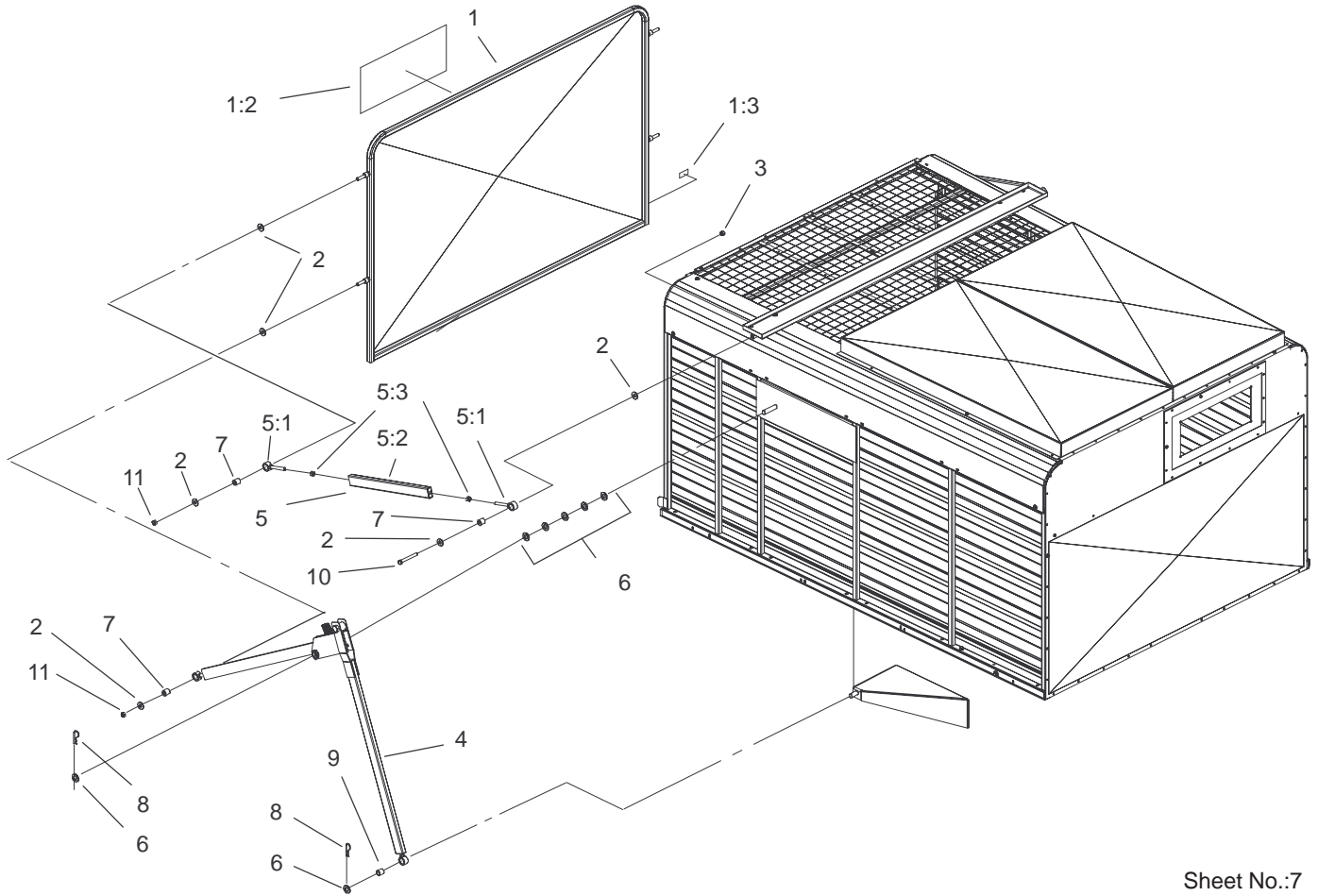


Sheet No.:A2

Left Hand Sidewall Assembly

Ref. No.	Part No.	Qty.	Description
1	VT203-0L-01	1	Left Wall ASM
2	106-0176	1	Sheet-Sidewall, LH
2:3	106-0162	1	Decal-Caution Stay Clear
3	VT130-0L-01	1	Trim-Enclosure, Left
4	106-0175	1	Corner-Roof, LH
5	VT130-0R-01	1	Trim-Enclosure, Right
6	3256-22	8	Washer-Flat
7	321-4	8	Screw-HH
8	3296-42	8	Nut-Lock, NI
9	105-0618	24	Screw

Ref. No.	Part No.	Qty.	Description

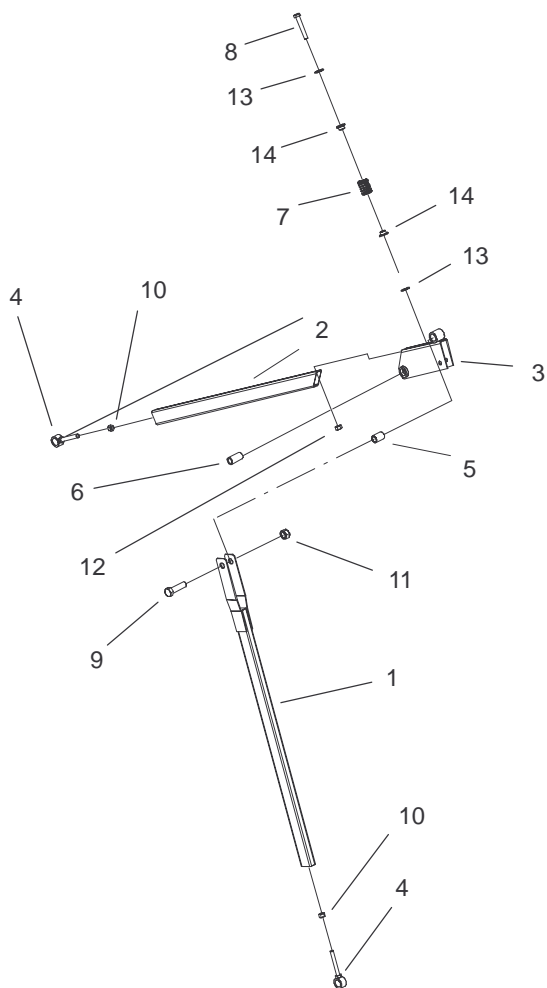


Sheet No.:7

Door Assembly

Ref. No.	Part No.	Qty.	Description
1	106-0194	1	Door-Trailer
1:2	67-7920	1	Decal-Toro Logo
1:3	106-0162	1	Decal-Caution Stay Clear
2	3256-5	12	Washer-Flat
3	3296-23	2	Nut-Lock, NI
4	SVA15100	2	Link-Lower Door ASM
5	SVA15000	2	Link-Upper Door ASM
5:1	SVA11700-01	1	Link-ASM
5:2	SVA12200	2	Pivot-Hinge
5:3	3217-9	2	Nut-HH
6	3256-28	14	Washer-Flat
7	SVA12700	6	Bushing
8	9335064	4	Pin-Cotter, Hair
9	SVA12800	2	Bushing
10	325-17	2	Screw-HH
11	32153-5	4	Nut-Lock

Ref. No.	Part No.	Qty.	Description

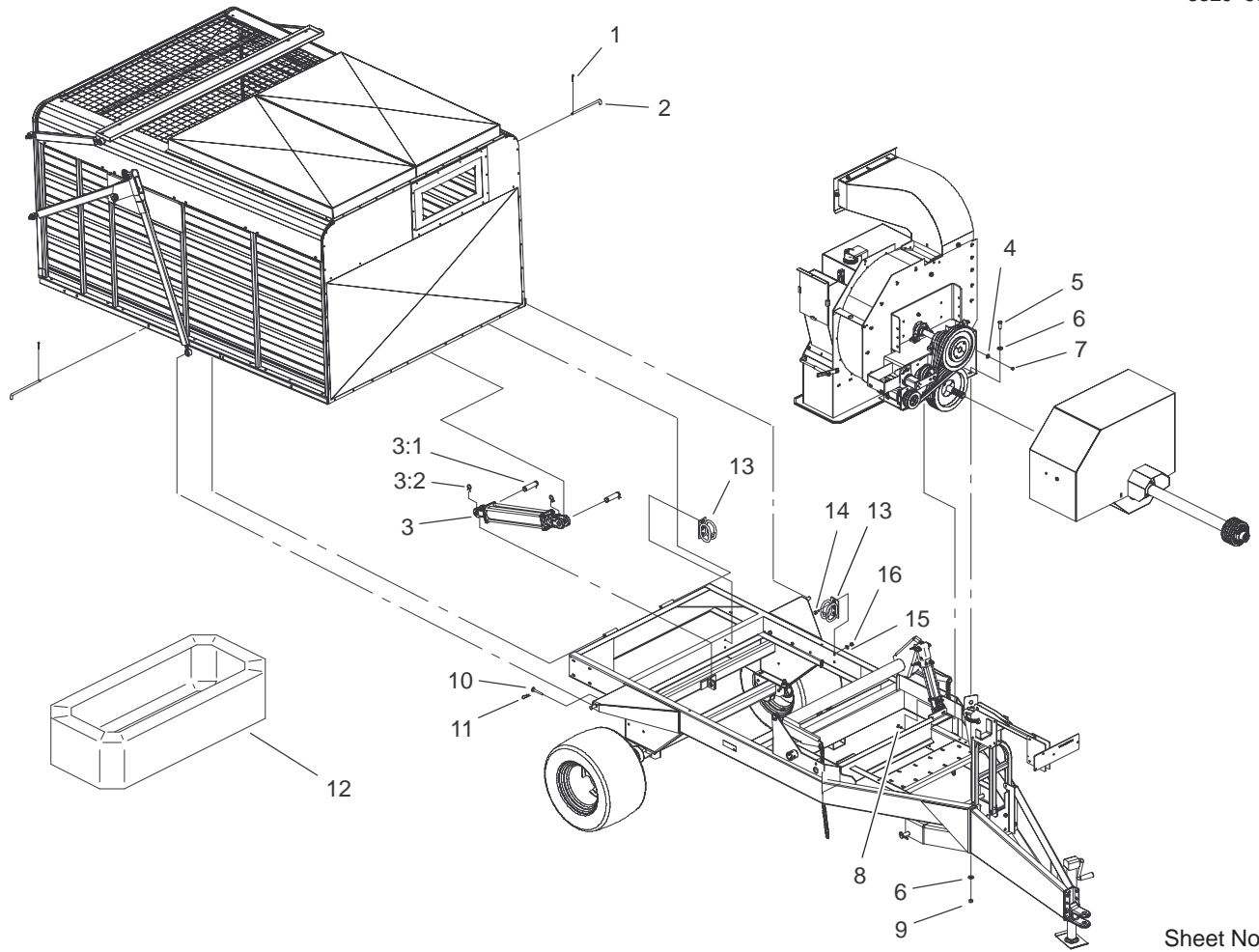


Sheet No.:A3

Link - Lower Door Assembly

Ref. No.	Part No.	Qty.	Description
1	SVA11800-01	1	Pull Arm ASM
2	SVA11600-01	1	Lower Linkage ASM
3	SVA12100-01	1	Mount-Bracket
4	SVA12200	2	Pivot-Hinge
5	SVA12900	1	Bushing
6	SVA13000	1	Bushing
7	GF206-00	1	Spring-Compression
8	325-13	1	Screw-HH
9	328-3	1	Screw-HH
10	3217-9	2	Nut-HH
11	3296-51	1	Nut-Lock, NI
12	3296-23	1	Nut-Lock, NI
13	3256-26	2	Washer-Flat
14	SVA13300	2	Bushing-Flange

Ref. No.	Part No.	Qty.	Description



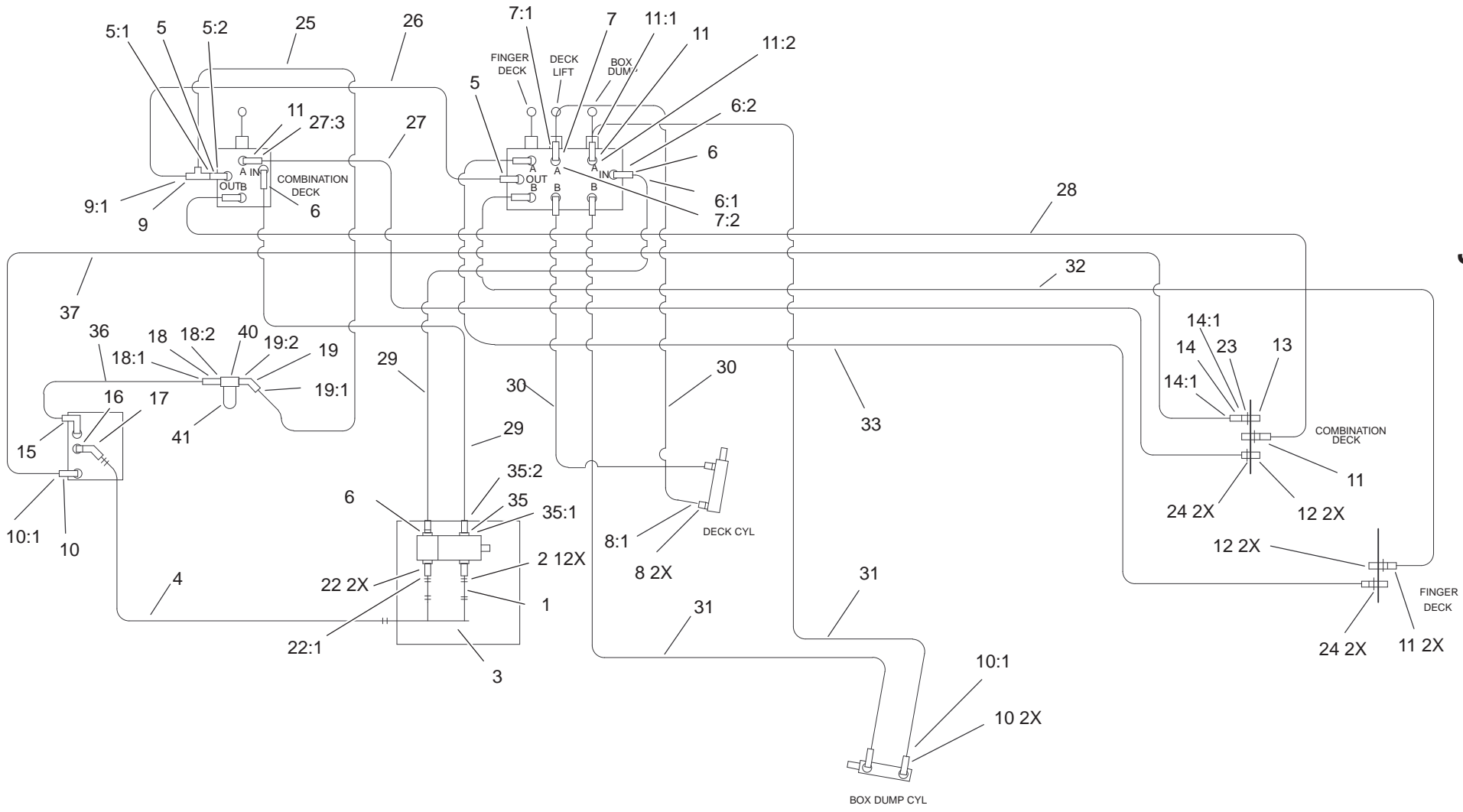
Sheet No.:8

Cylinder Assembly

Ref. No.	Part No.	Qty.	Description
1	3272-22	2	Pin-Cotter
2	PB114-00	2	Pin-Hinge
3	PSP10300	1	Hydraulic Cylinder ASM
3:1	PSP10301	2	Pin
3:2	PSP10302	4	Keeper
4	3256-4	4	Washer-Flat
5	325-6	5	Screw-HH
6	3256-6	10	Washer-Flat
7	3296-39	4	Nut-Lock, NI
8	3231-25	4	Screw-CARR
9	3296-23	5	Nut-Lock, NI
10	SVA12600	2	Pin-Door, ASM
11	3290-355	2	Pin-Hair
12	SVP15100	1	Ring-Canvas
13	99-5621	2	Guide-Hose
14	322-3	4	Screw-HH
15	3256-23	4	Washer-Flat
16	3296-29	4	Nut-Lock, NI

Ref. No.	Part No.	Qty.	Description

Hydraulic Schematic



Hydraulic Schematic

Ref. No.	Part No.	Qty.	Description	Ref. No.	Part No.	Qty.	Description
1	106-0072	2	Hose-Suction	*42	SVA13800	10	Tiewire
2	2412-34	12	Clamp-Hose	44		3	Adapter
3	106-0070	1	Tube-Manifold	44:1	237-30	1	O-Ring
4	106-0071	1	Hose-Suction	44:2	237-79	1	O-Ring
5	340-7	2	Adapter				
5:1	237-65	1	O-Ring				
5:2	237-80	1	O-Ring				
6	340-6	3	Fitting-HYD, Straight				
6:1	237-30	1	O-Ring				
6:2	237-80	1	O-Ring				
7	106-0073	1	Fitting-Orificed				
7:1	237-22	1	O-Ring				
7:2	237-79	1	O-Ring				
7:99	32151-83	1	Ring-Snap				
8	340-12	2	Fitting-Straight				
8:1	237-22	1	O-Ring				
9	340-147	1	Fitting-HYD, Tee				
9:1	237-65	2	O-Ring				
10	340-124	3	Adapter				
10:1	237-22	1	O-Ring				
11	340-3	7	Adapter				
11:1	237-22	1	O-Ring				
11:2	237-79	1	O-Ring				
12	105-4169	4	Coupler-Female				
13	63-1220	1	Coupler-Disconnect, Quick				
14	340-82	1	Adapter				
14:1	237-42	1	O-Ring				
14:2	237-21	1	O-Ring				
15	340-108	1	Fitting-HYD				
16	SVB14400	1	Strainer-Suction				
17	SVB15100	1	Adapter-Cms				
18	340-8	1	Adapter				
18:1	237-65	1	O-Ring				
18:2	237-81	1	O-Ring				
19	340-156	1	Fitting-HYD				
19:1	237-65	1	O-Ring				
19:2	237-81	1	O-Ring				
22	353-987	2	Fitting-HYD, 90°				
22:1	237-81	1	O-Ring				
23	32151-83	1	Ring-Snap				
24	32120-2	4	Ring-Retaining				
25	105-0649	1	HYD Hose ASM				
26	105-0648	1	HYD Hose ASM				
27	105-0650	1	HYD Hose ASM				
27:3	237-79	1	O-Ring				
28	105-0651	1	HYD Hose ASM				
29	105-0653	2	HYD Hose ASM				
30	105-0642	2	HYD Hose ASM				
31	105-0652	2	HYD Hose ASM				
32	105-0645	1	HYD Hose ASM				
33	105-0646	1	HYD Hose ASM				
35	340-105	1	Fitting-HYD, 90°				
35:1	237-80	1	O-Ring				
35:2	237-30	1	O-Ring				
36	105-0638	1	HYD Hose ASM				
37	105-0654	1	HYD Hose ASM				
40	92-5821	1	Filter Head ASM				
41	54-0110	1	Filter-Oil, Transmission				

* Not illustrated

