



# Groundsmaster<sup>®</sup> 345

## Traction Unit

Model No. 30789—230000001 and Up

## Parts Catalog

---

### Ordering Replacement Parts

To order replacement parts, please supply: the part number, the quantity, and the description of each part desired.

### Understanding Reference Numbers

Each identified part in an illustration has a reference number. The reference number for a part also appears in the parts list, along with other information about the part.

This catalog uses two special reference number formats, one to indicate parts in a service assembly and another to indicate the quantity of a given part in an illustration.

### Service Assembly Reference Numbers

Parts in service assemblies have reference numbers in the form **a:b**. The **a** represents the reference number of the entire service assembly and the **b** represents a sequential number unique to each part within the service assembly.

For example, a wheel assembly might be identified by reference number **6**, the tire by **6:1**, the valve by **6:2**, and the wheel by **6:3**. When you order the assembly identified by reference number **6**, you receive all parts identified by reference numbers **6:1**, **6:2**, and **6:3**. However, you may also order any part individually.

Reference numbers of this type appear in illustrations and in part lists.

### Reference Numbers Indicating Quantity

In an illustration, if a reference number indicates more than one part, the reference number has the form **nX y**. The **n** represents the quantity of the part, the **X** is the multiplication symbol, and the **y** represents the reference number.

For example, in an illustration, the reference number **2X 37** means that two of the parts identified by reference number **37** are indicated.

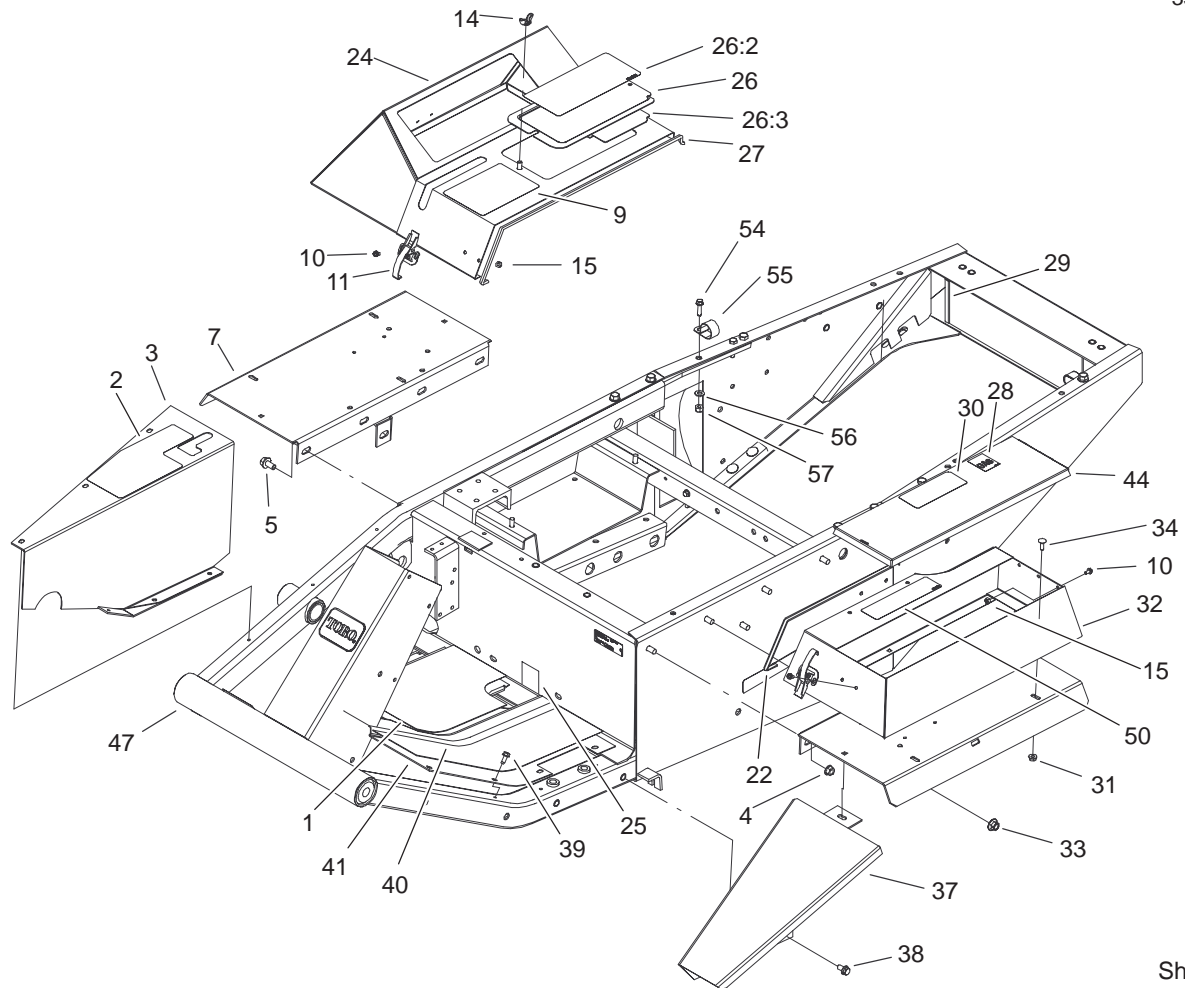
## Contents

Description	Page	Description	Page
Frame Installation Assembly .....	3	Radiator and Hood Assembly .....	23
Frame Assembly No. 98-3879 .....	4	Hydrostatic Transmission Assembly .....	25
Control Panel Assembly .....	5	Transmission Assembly No. 92-8947 .....	26
Brake Pedal Assembly .....	6	Neutral Centering Device Assembly .....	28
Traction Pedal Assembly .....	7	Push Arm Assembly .....	29
Power Steering Assembly .....	8	Fuel Tank and Front Axle Assembly .....	31
Power Steering Unit Assembly No. 92-7308 ..	9	Rear Axle Assembly .....	32
Engine Installation Assembly .....	10	Hydraulic Cylinder Assembly No. 92-7828 .....	34
Governor Assembly No. 67-8361 .....	11	Front Axle Assembly No. 86-9600-03 .....	35
Engine Component Assembly .....	12	Brake Assembly .....	37
Air Cleaner Assembly No. 27-7100 .....	16	Electrical Schematic .....	38
Power Take Off and Shaft Assembly .....	17	Hydraulic Schematic .....	39
Power Take Off Assembly .....	18	Crankshaft and Camshaft Assembly .....	40
Valve and Cylinder Assembly .....	19	Oil Pump and Filter Assembly .....	43
Hydraulic Cylinder (2-1/2in Bore)		Cylinder Head and Valve Assembly .....	44
Assembly No. 100-6586 .....	20	Manifold Assembly .....	45
Hydraulic Cylinder (3in Bore)		Carburetor Assembly .....	46
Assembly No. 100-6591 .....	21	Ignition and Fuel Pump Assembly .....	47
Valve Assembly No. 105-7821-01 .....	22	Starter Motor Assembly (91AB1100JB) .....	48

## Part Description Abbreviations

Part descriptions in this catalog may include the following abbreviations.

Abbreviation	Meaning	Abbreviation	Meaning
AR .....	as required	HYD .....	hydraulic
ASM .....	assembly	INC .....	incorporated
CARR .....	carriage	LH .....	left hand
DEG .....	degrees	NI .....	nylon insert
FH .....	flat head	PPH .....	Phillips pan head
GA .....	gauge	PTH .....	Phillips truss head
HF .....	hex flange	PTO .....	power take off
HH .....	hex head	RH .....	right hand
HHF .....	hex head flange	SFH .....	slotted fillister head
HLH .....	hex lag head	SHH .....	slotted hex head
HJ .....	hex jam	SQH .....	square head
HOC .....	height-of-cut	SHWH .....	slotted hex washer head
HS .....	hex socket	SPH .....	slotted pan head
HSBH .....	hex socket button head	SRH .....	slotted round head
HSFH .....	hex socket flat head	STD .....	standard
HSH .....	hex socket head	TAP .....	self tapping
HWH .....	hex washer head	TTH .....	Torx truss head
HWHTF .....	hex washer head thread forming	WH .....	wing head

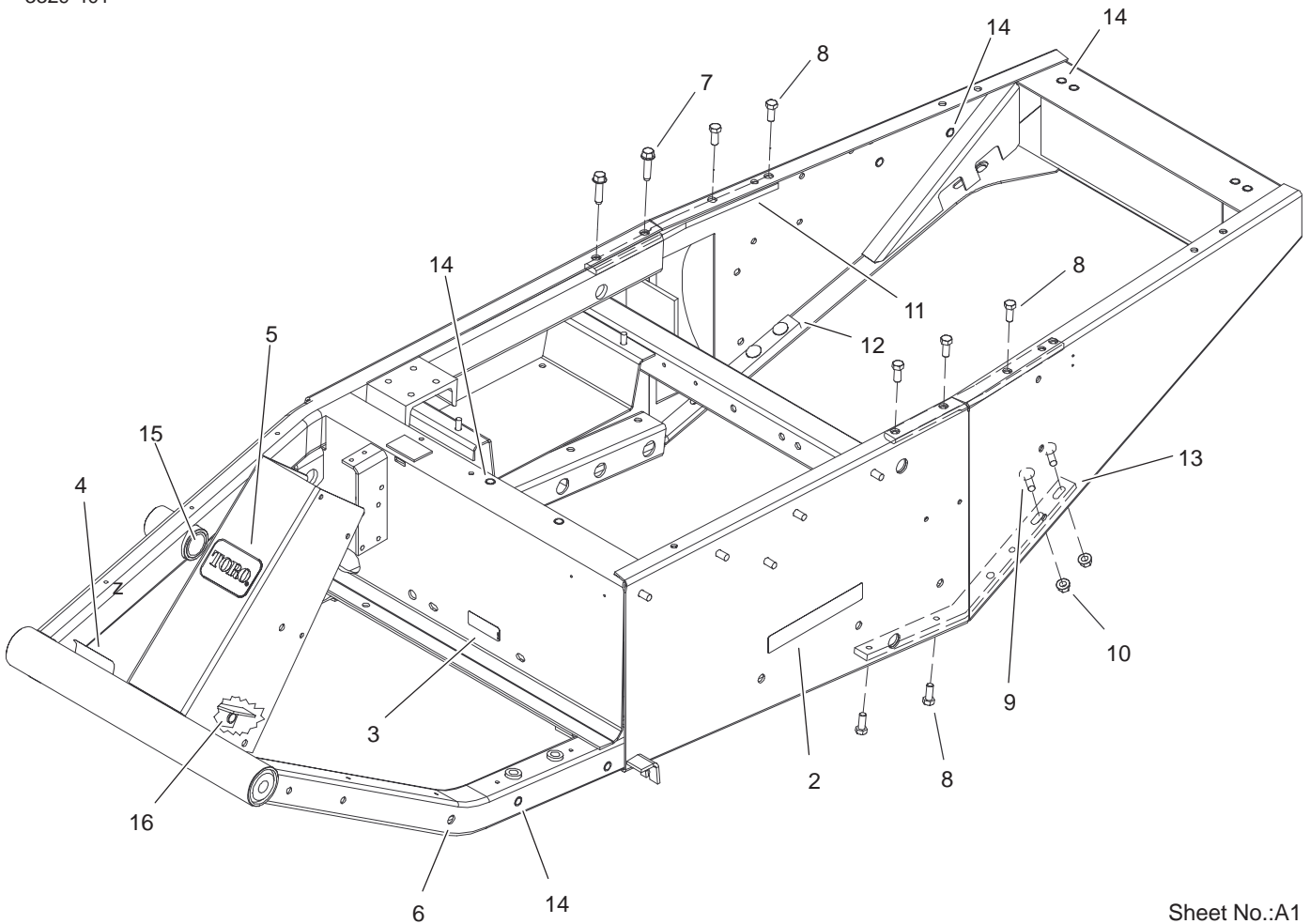


Sheet No.:2

## Frame Installation Assembly

Ref. No.	Part No.	Qty.	Description
1	21-2770	1	Pad-Floor Plate, RH
2	105-7822	1	Decal-Caution
3	21-2660-01	1	Plate-Side, Foot Rest
4	32128-21	2	Nut-HF
5	3234-12	4	Screw-HHF
7	105-2596-01	2	Fender ASM
9	27-7290	1	Decal-PT O
10	3290-144	9	Screw-SHWH
11	249-21	3	Clamp-Slotted
14	32103-2	1	Nut-Wing
15	3296-2	9	Nut-Lock
22	37-9650	1	Trim-Box, Tool
24	38-4550-03	1	Cover-Instruments
25	85-4730	1	Decal-Only, HYD Oil
26	92-7800	1	Battery Cover ASM
26:2	92-7802	1	Decal-Instr., Start
26:3	92-7801	1	Shield-Cover, Battery
27	39-8020	1	Trim-Cover, Instrument
28	53-4420	1	Decal-Gas
29	43-4300	2	Trim-Frame, Rear
30	27-7310	1	Decal-Refueling
31	32128-33	5	Nut-HF
32	93-3182-03	1	Box-Tool
33	32128-19	6	Nut-HF
34	3229-1	5	Screw-CARR

Ref. No.	Part No.	Qty.	Description
37	68-8610-01	1	Extension-Fender
38	3234-14	2	Screw-HHF
39	32144-10	11	Screw-HWH
40	21-2760	1	Pad-Plate Floor, LH
41	88-0070-01	1	Plate-Floor
44	93-3177-03	1	Cover-Box, Tool
47	98-3879	1	Frame ASM
50	67-1710	1	Decal-Warning
54	322-6	1	Screw-HH
55	2412-126	2	R-Clamp
56	3256-23	1	Washer-Flat
57	3296-29	1	Nut-Lock, NI

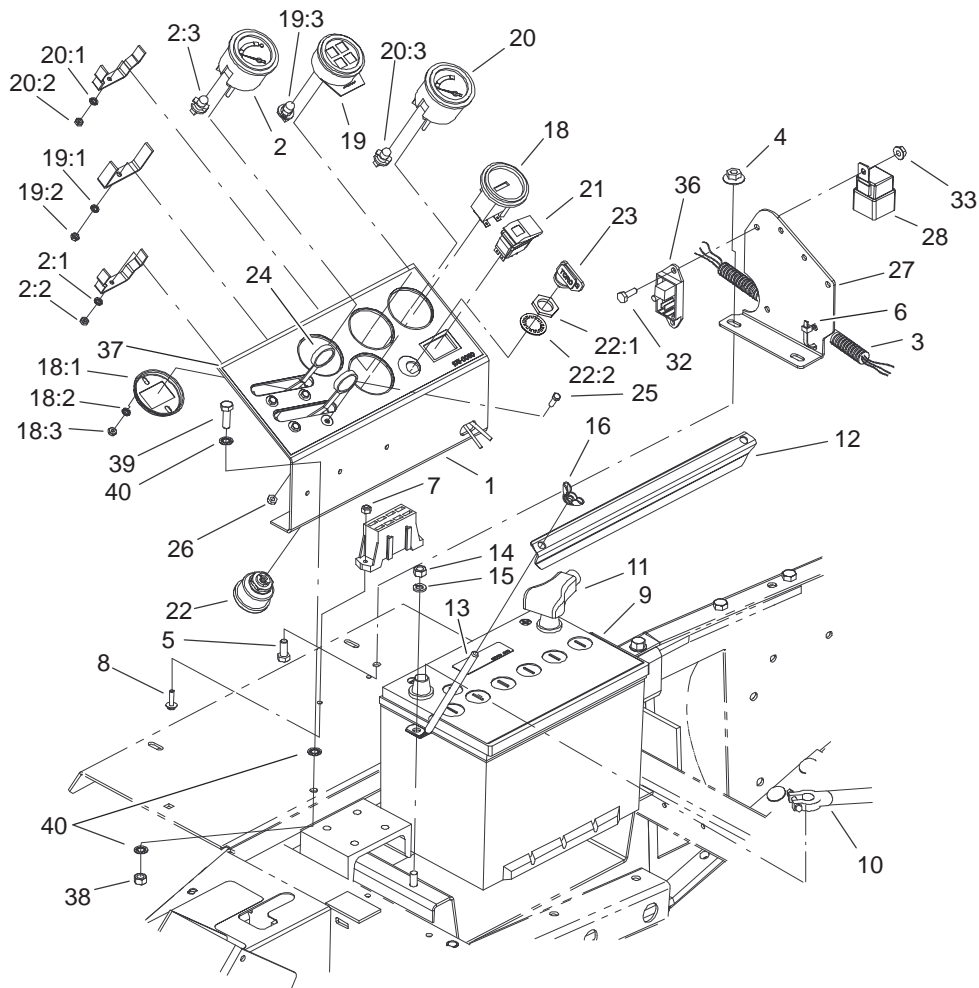


Sheet No.:A1

### Frame Assembly No. 98-3879

Ref. No.	Part No.	Qty.	Description
2	67-1720	2	Decal-Caution
3	85-4730	1	Decal-Only , HYD Oil
4	27-7320	1	Decal-Pedal, Traction
5	70-2200	1	Decal-Logo, Toro
6	32148-9	1	Insert-Nut
7	11-0590	2	Screw-HWHTF
8	3234-25	9	Bolt-HF
9	3231-25	4	Screw-CARR
10	32128-21	4	Nut-HF
11	98-3866-01	2	Brace-Upper
12	98-3865-01	1	Brace-Right, Lower
13	98-3864-01	1	Brace-Left, Lower
14	3290-472	10	Insert-Threaded
15	256-126	2	Bushing
16	256-156	1	Bushing-Flange

Ref. No.	Part No.	Qty.	Description

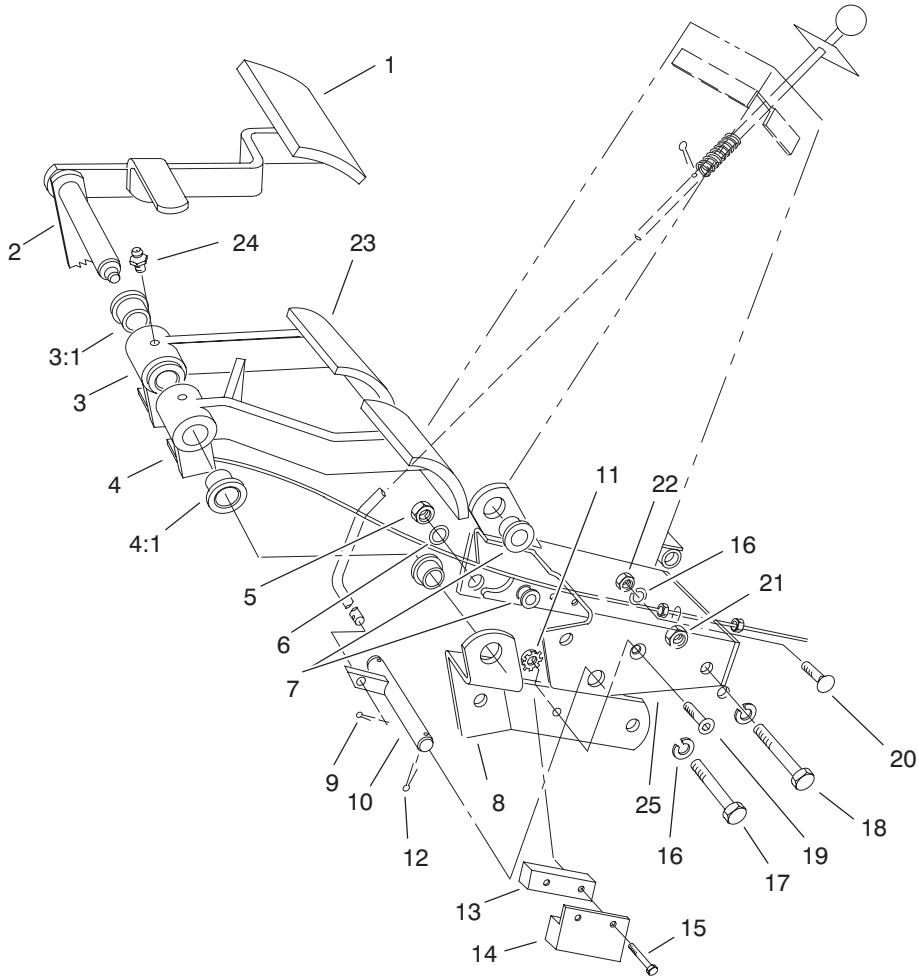


Sheet No.:3

## Control Panel Assembly

Ref. No.	Part No.	Qty.	Description
1	105-0081-03	1	Panel-Instrument
2	98-9339	1	Gauge-Fuel
2:1	3254-1	3	Washer-Lock, Int
2:2	3217-27	3	Nut-Hex
2:3	105-9265	1	Bulb And Lamp ASM
3	105-0015	1	Harness-Wire
4	32128-20	2	Nut-HF
5	322-3	2	Screw-HH
6	3290-379	2	Tie-Cable
7	3296-2	2	Nut-Lock
8	32105-13	2	Screw-SHH
9	55-7290	1	Battery (Dry)
10	67-8540	1	Cable-Battery (Neg)
11	105-2530	1	Cable-Battery (Pos)
12	24-6420-03	1	Holddown-Battery
13	24-6390	2	Stud-Holddown, Battery
14	3217-6	2	Nut-Hex
15	3253-4	2	Washer-Lock
16	32103-2	2	Nut-Wing
18	12-9990	1	Meter-Hour
18:1	218-515	1	Bracket
18:2	3255-5	1	Washer-Lock, Ext
18:3	3217-26	1	Nut-Hex
19	98-9306	1	Light-W arning
19:1	3254-1	1	Washer-Lock, Int

Ref. No.	Part No.	Qty.	Description
19:2	3217-27	1	Nut-Hex
19:3	105-9264	4	Bulb And Lamp ASM
20	105-2540	1	Gauge-Temp, Gas
20:1	3254-1	3	Washer-Lock, Int
20:2	3217-27	3	Nut-Hex
20:3	105-9265	1	Bulb And Lamp ASM
21	100-8072	1	Switch
22	104-2541	1	Switch-Key
22:1	218-461	1	Nut-HH
22:2	3254-5	1	Washer-T ooth
23	63-8360	1	Key-Ignition
24	67-8560	2	Cable-Control, Throttle
25	3290-134	4	Screw
26	3296-12	4	Nut-Lock
27	105-0002-01	1	Bracket-Relay
28	70-1480	3	Relay
32	321-4	3	Screw-HH
33	32128-33	3	Nut-HF
36	100-6170	1	Module-Delay
37	105-0080	1	Decal-Panel, Instrument
38	3217-6	2	Nut-Hex
39	322-5	2	Screw-HH
40	3254-2	6	Washer-Lock, Int

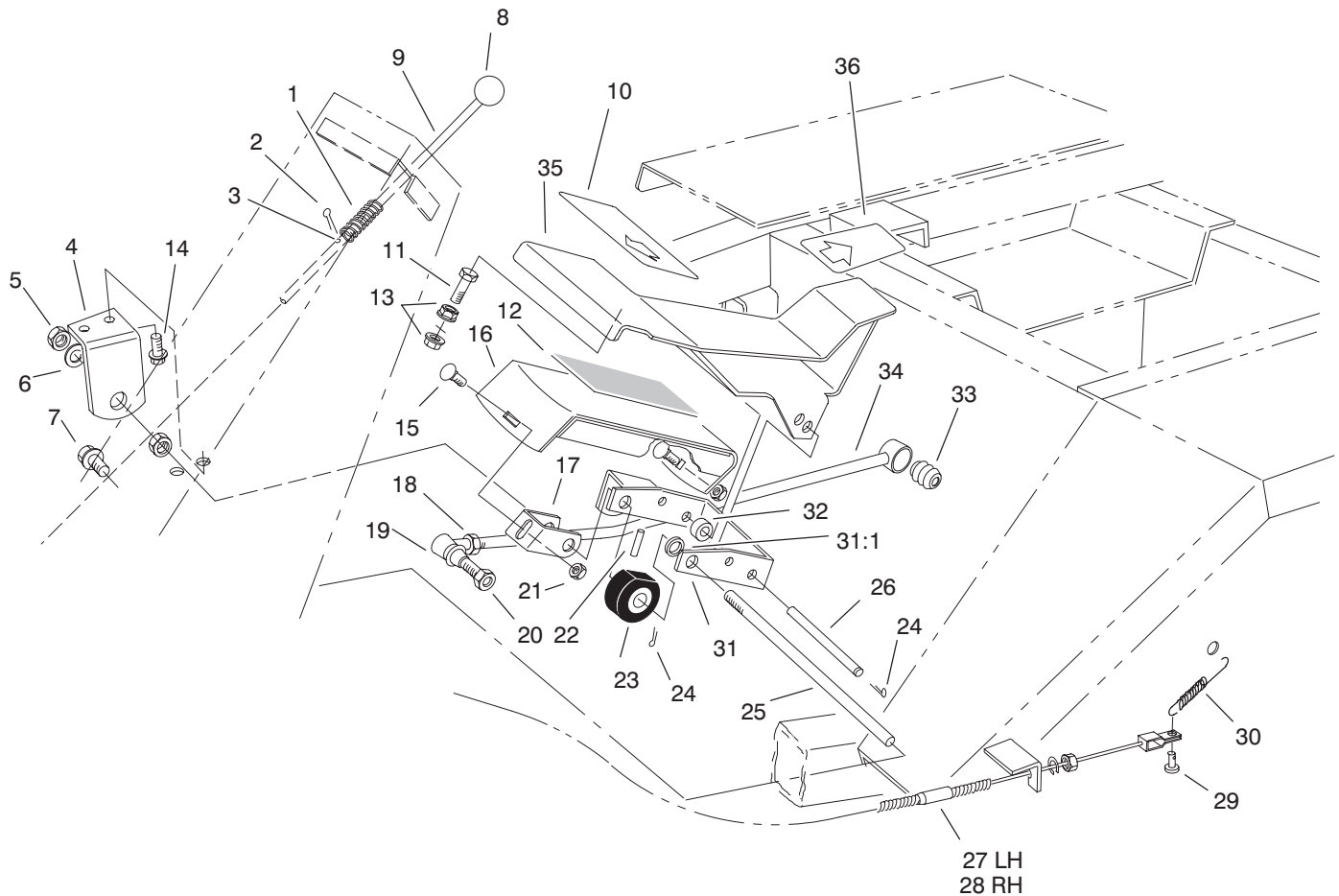


Sheet No.:4

## Brake Pedal Assembly

Ref. No.	Part No.	Qty.	Description
1	93-8742	1	Footpad-Brake
2	27-8550-01	1	Parking Brake Pedal ASM
3	27-7510	1	RH Brake Pedal ASM
3:1	256-10	2	Bushing-Flange
4	27-7490	1	LH Brake Pedal ASM
4:1	256-10	2	Bushing-Flange
5	3296-2	2	Nut-Lock
6	3256-51	4	Washer-Flat
7	256-156	4	Bushing-Flange
8	27-9270-01	1	Mount-Brake, Pivot Shaft
9	3272-5	2	Pin-Cotter
10	105-0065	1	Parking Brake Shaft ASM
11	32149-2	1	Nut
12	3272-6	2	Pin-Cotter
13	105-0064	1	Spacer-Switch
14	100-1270	1	Switch-Proximity
15	3290-360	2	Screw-HH
16	3253-21	4	Washer-Lock
17	323-13	1	Screw-HH
18	323-14	1	Screw-HH
19	3274-47	1	Screw-HSFH
20	3231-21	2	Screw-CARR

Ref. No.	Part No.	Qty.	Description
21	32153-2	2	Nut-Lock, Side-Deform
22	3217-7	2	Nut-Hex
23	93-8743	2	Footpad-T urn
24	302-5	2	Fitting-Grease
25	105-0066-01	1	Brake Pedal Mount ASM

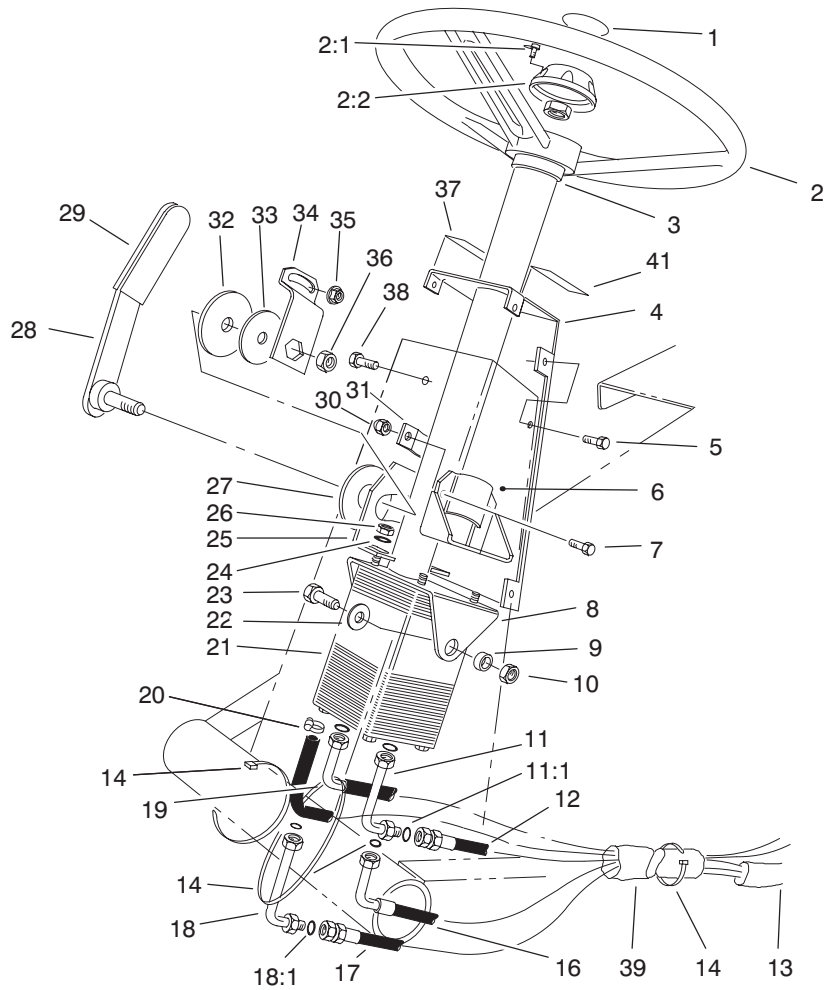


Sheet No.:5

## Traction Pedal Assembly

Ref. No.	Part No.	Qty.	Description
1	95-1821-03	1	Spring-Compression
2	3272-5	1	Pin-Cotter
3	3256-22	1	Washer-Flat
4	21-2850-01	1	Mount-Pedal, RH
5	3218-5	2	Nut-Jam
6	3256-26	1	Washer-Flat
7	3234-11	3	Screw-HHF
8	233-17	1	Knob
9	82-8670	1	Rod-Latch, Brake
10	94-3307	1	Pad-Pedal, Traction
11	323-15	1	Screw-HH
12	88-1720	1	Pad-Footrest
13	32128-43	2	Nut-Flange
14	11-0590	2	Screw-HWHTF
15	3230-1	2	Bolt-CARR
16	88-1710-01	1	Footrest
17	88-1680-01	1	Bracket-Footrest
18	3220-5	1	Nut-Jam
19	21-0141	1	RH Ball Joint ASM
20	3220-3	2	Nut-Jam
21	32128-25	2	Nut-Flange
22	32121-6	1	Pin-Roll
23	28-5220	1	Friction Wheel ASM
24	3272-6	4	Pin-Cotter
25	88-1650	1	Shaft-Pedal, Traction
26	88-1640	1	Pin-Pedal, Traction

Ref. No.	Part No.	Qty.	Description
27	21-3380	1	LH Brake Cable ASM
28	21-3370	1	RH Brake Cable ASM
29	283-58	2	Pin-Clevis
30	3-7243	2	Spring-Extension
31	88-1670	1	Pivot Bracket ASM
31:1	256-156	2	Bushing-Flange
32	88-0470	1	Tube-Spacer, Pedal
33	23-2270	1	Bushing-Rubber
34	23-2240-03	1	Pump Control Tube ASM
35	94-3304-01	1	Support-Pedal
36	94-3308	1	Pad-Pedal, Traction



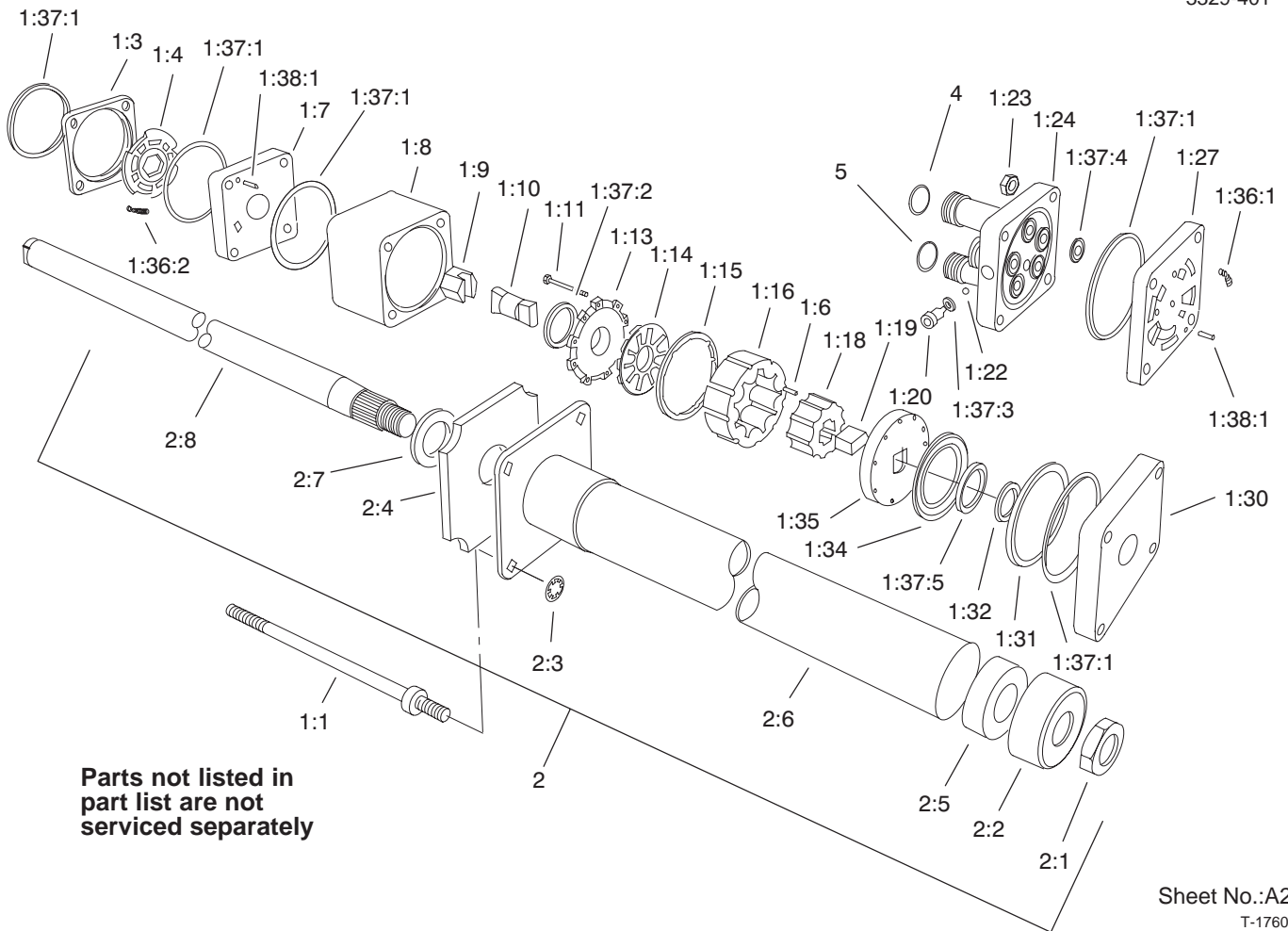
Sheet No.:6

## Power Steering Assembly

Ref. No.	Part No.	Qty.	Description
1	68-5370	1	Decal-Toro
2	75-0560	1	Wheel-Steering
2:1	32144-21	1	Screw
2:2	68-5140	1	Cap-Steering Wheel
3	21-9260	1	Cover-Dust
4	82-8660-01	1	Cover-Tower
5	32144-10	6	Screw-HWH
6	67-8690-03	1	Support-Column
7	322-5	2	Screw-HH
8	77-3120-01	1	Bracket-Mounting, Column
9	80-2960	2	Spacer-Tower
10	32153-2	2	Nut-Lock, Side-Deform
11	82-8760	1	Elbow-HYD
11:1	237-30	1	O-Ring
12	63-8970	1	Hose-HYD
13	70-1390	1	Sleeve-Protective
14	3290-379	4	Tie-Cable
16	68-9730	1	Hose-Steering, HYD
17	68-9720	1	Hose-Steering, HYD
18	82-8770	1	Elbow-HYD
18:1	237-22	1	O-Ring
19	63-8980	1	Hose-HYD
20	2412-36	1	Clamp-Hose

Ref. No.	Part No.	Qty.	Description
21	92-7308	1	Power Steering Unit ASM
22	3256-46	2	Washer-Flat
23	323-6	2	Screw-HH
24	3256-3	4	Washer-Flat
25	80-2940-03	1	Plate-Pivot
26	3296-20	4	Nut-Lock, NI
27	31-0390	1	Disc-Friction
28	93-1353-03	1	Lever-Steering, Tilt
29	21-1880	2	Grip-Handle
30	3296-29	2	Nut-Lock, NI
31	82-8650	1	Clamp-Column
32	82-9010	1	Disc-Friction
33	80-2930	1	Washer-Flat
34	80-2880	1	Bracket-Tilt
35	32128-20	1	Nut-HF
36	3218-7	1	Nut-Jam
37	82-8940	1	Decal-Steering, Tilt
38	322-4	1	Screw-HH
39	70-1380	1	Sleeve-Protective
41	82-8930	1	Decal-Brake, Parking





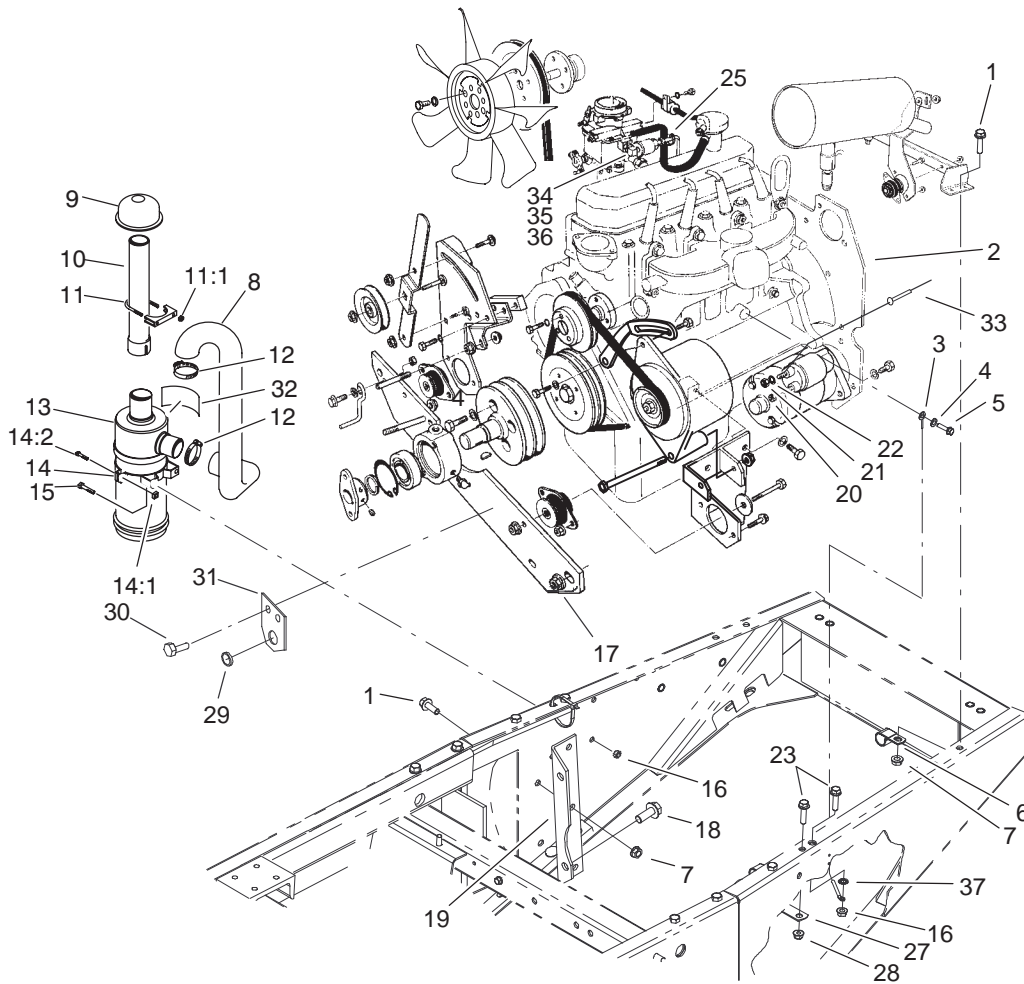
## Power Steering Unit Assembly No. 92-7308

Ref. No.	Part No.	Qty.	Description
1:1	92-7310	4	Bolt-Special
☆1:3		1	Ring-V valve
☆1:4		1	Plate-V valve
☆1:6		9	Pin-Alignment
☆1:7		1	Manifold-Isolation
☆1:8		1	Ring-Metering
☆1:9		1	Hex Drive ASM
☆1:10		1	Link-Drive
☆1:11		11	Screw-HSH
☆1:13		1	Cover-Commutator
☆1:14		1	Commutator
☆1:15		1	Ring-Commutator
☆1:16		1	Stator
☆1:18		1	Rotor
☆1:19		1	Spacer-Link, Drive
☆1:20		1	Plug
☆1:22		1	Ball
☆1:23		4	Nut-Hex
☆1:24		1	Cover-Port
☆1:27		1	Manifold-Port
☆1:30		1	Plate-Cover, Upper
☆1:31		1	Spacer-Bearing, Thrust
☆1:32		1	Spacer-Seal
☆1:34		1	Bearing-Thrust
☆1:35		1	Plate-Drive

Ref. No.	Part No.	Qty.	Description
*1:36	66-9970	1	Spring Kit
☆1:36:1		3	Spring
☆1:36:2		3	Spring
*1:37	66-9980	1	Seal Kit
☆1:37:1		5	Ring-Seal
☆1:37:2		1	Seal-Commutator
☆1:37:3		1	O-Ring
☆1:37:4		5	O-Ring
☆1:37:5		1	Seal-Face
*1:38	66-9990	1	Needle Roller Kit
☆1:38:1		9	Pin-Alignment
2	92-7314	1	Column ASM
2:1	3220-6	1	Nut-Jam
2:2	92-7315	1	Seal-Upper
2:3	92-7316	4	Nut-Push On
2:4	92-7317	1	Seal-Foam, Upper Cover
2:5	66-9780	1	Bushing
☆2:6		1	Cover-Upper
☆2:7		1	Washer-Retaining
☆2:8		1	Shaft-Input
4	237-30	2	O-Ring
5	237-22	2	O-Ring

☆ Not serviced separately

\* Not illustrated

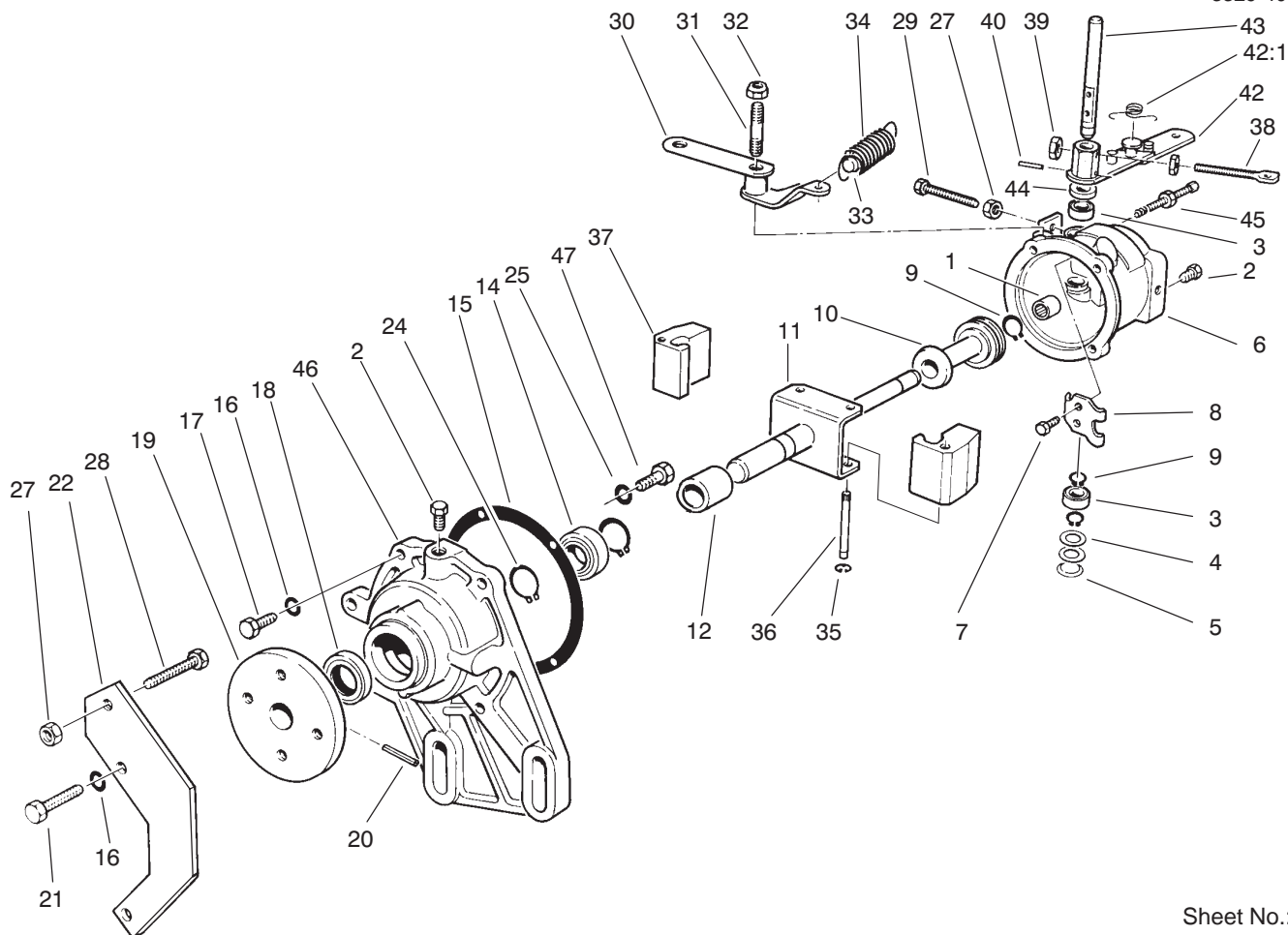


Sheet No.:7  
T-3928

## Engine Installation Assembly

Ref. No.	Part No.	Qty.	Description
1	3234-11	10	Screw-HHF
2		1	Engine-Ford (Vsg413 Type 6005a)
3	18-2770	1	Cable-Ground
4	3254-3	1	Washer-Lock/Int
5	33115-020	1	Screw-HH
6	2412-4	2	Clamp
7	3290-357	10	Nut-HHF
8	82-5590	1	Hose-Cleaner, Air
9	27-7180	1	Cap ASM
10	43-3810-03	1	Tube-Cleaner, Air
11	20-4840	1	Clamp-Muf fler
11:1	3217-6	2	Nut-Hex
12	2412-42	2	Clamp-Hose
13	27-7100	1	Air Cleaner ASM
14	27-7170	2	Mounting Band ASM
14:1	32107-11	2	Nut-Square
14:2	3258-19	2	Screw
15	322-3	4	Screw-HH
16	32128-20	5	Nut-HF
17	32128-23	2	Nut-HF
18	3234-32	2	Screw-HHF
19	67-8190-01	2	Bracket-Support, Engine
20	48-7890	1	Nut
21	33014-00	1	Nut-Hex

Ref. No.	Part No.	Qty.	Description
22	3254-2	2	Washer-Lock, Int
23	3234-36	2	Screw-HHF
25	3290-379	1	Tie-Cable
27	98-3883	1	Clamp-Wire
28	104-8300	3	Nut-Flange, NI
29	240-7	1	Grommet-Rubber
30	32144-11	2	Screw-T AP
31	104-3774-03	1	Bracket-Bulkhead
32	27-7160	1	Decal-Installation
33	99-3441	1	Harness-Wire, Fusible Link
34	48-7880	1	Nut-Hex
35	5-3637	1	Spacer
36	3253-17	1	Washer-Lock/Sp
37	3254-6	1	Washer-Lock, Internal



Sheet No.:A4

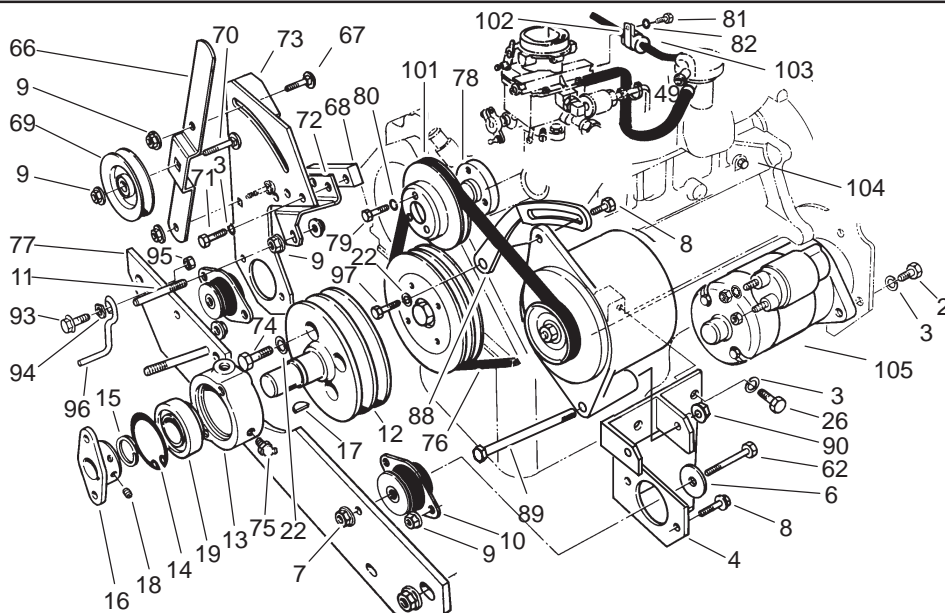
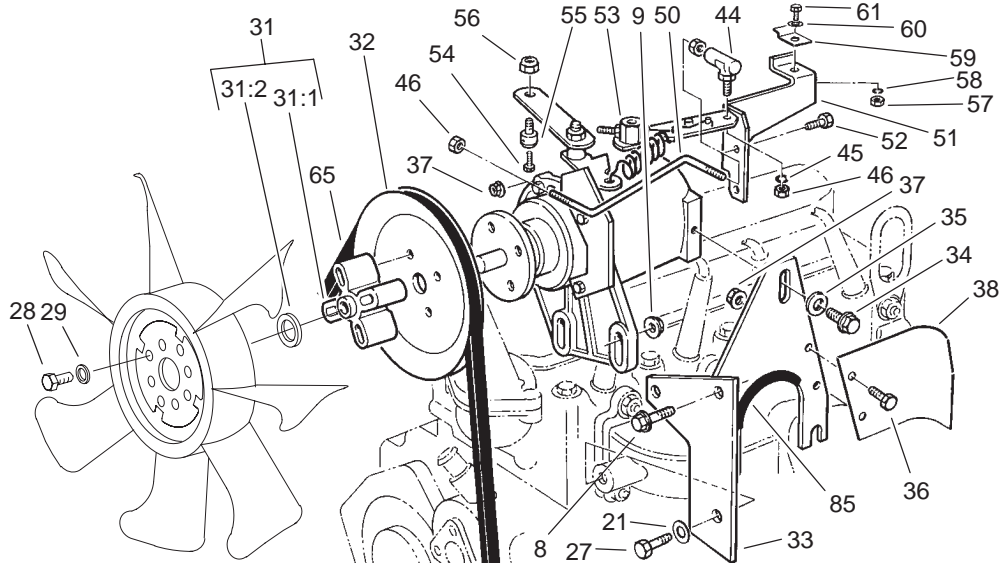
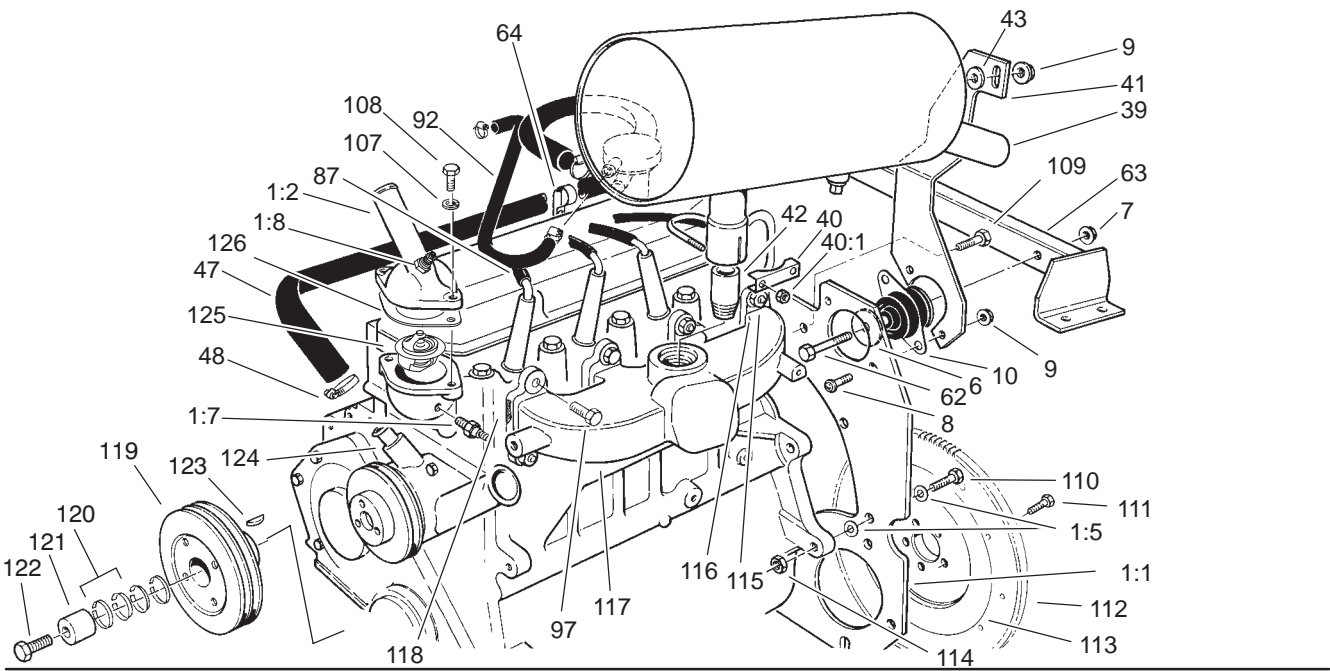
T-0933

## Governor Assembly No. 67-8361

Ref. No.	Part No.	Qty.	Description
1	72-5940	1	Bearing-Needle
2	285-17	2	Plug-Pipe
3	18-5450	2	Bearing-Shaft, Rocker
4	18-5440	2	Spacer-Plug, Expansion
5	18-5430	1	Plug-Expansion
6	70-2080	1	Body
7	18-5530	2	Screw-Lever To Shaft
8	18-5520	1	Lever-Rocker
9	18-5540	3	Retainer-Stop, Sleeve
10	70-2100	1	Thrust Sleeve And Bearing ASM
11	70-21 10	1	Shaft & Yoke-Main
12	70-2120	1	Spacer-Yoke To Bearing
14	70-2140	1	Bearing-Front, Main
15	18-5790	1	Gasket-Cover To Body
16	18-5630	4	Lockwasher
17	18-5620	2	Screw-Cover To Body
18	18-5580	1	Seal-Oil, Front Main
19	67-8370	1	Hub-Fan
20	32121-51	1	Pin-Roll
21	71-4770	2	Screw-HH
22	70-2160	1	Bracket-Stop, Speed

Ref. No.	Part No.	Qty.	Description
24	18-5640	2	Ring-Retaining, Bearing To Shaft
25	18-5770	2	Lockwasher-Bearing /Cover
27	3219-1	2	Nut-Hex
28	72-5920	1	Screw
29	72-5930	1	Screw
30	70-2070	1	Lever-Adjusting, Speed
31	70-2090	1	Stud-Pivot, Lever
32	3296-5	1	Nut-Lock, NI
33	72-5850	1	Pin-Force, Idle
34	72-5860	1	Spring-Governor
35	18-5670	2	Retainer-Pin, Pivot
36	18-5660	2	Pin-Pivot, Flyweight
37	70-2150	2	Flyweight
38	72-5870	1	Eyebolt
39	3219-2	2	Nut-Hex
40	18-5750	1	Pin-Shaft, Lever
42	72-5880	1	Throttle Lever ASM
42:1	18-5410	1	Torsion Spring
43	72-5890	1	Shaft-Rocker
44	71-4780	1	Seal-Oil
45	72-5910	1	Bumper Screw ASM
46	104-2524	1	Cover
47	32113-14	2	Screw

# Engine Component Assembly

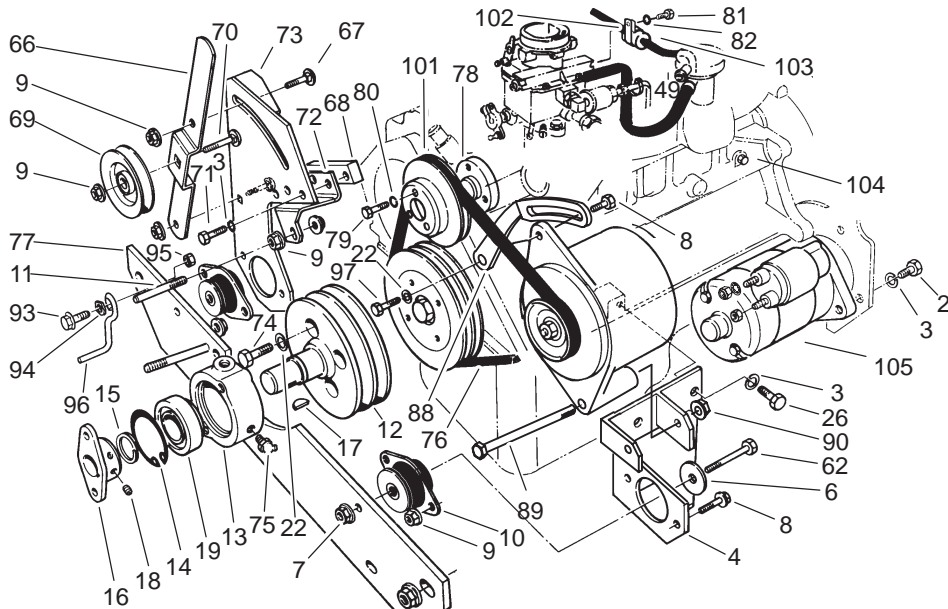
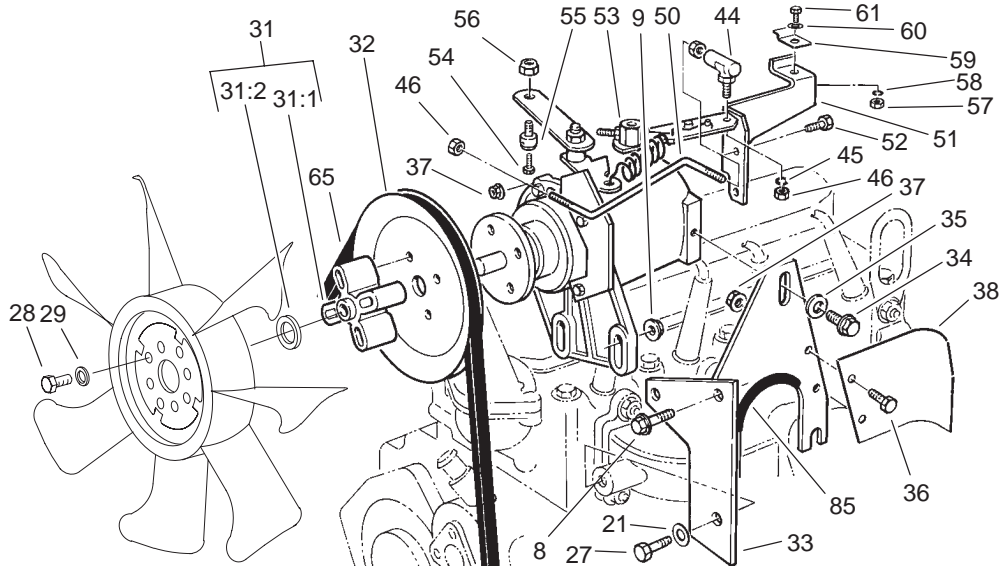
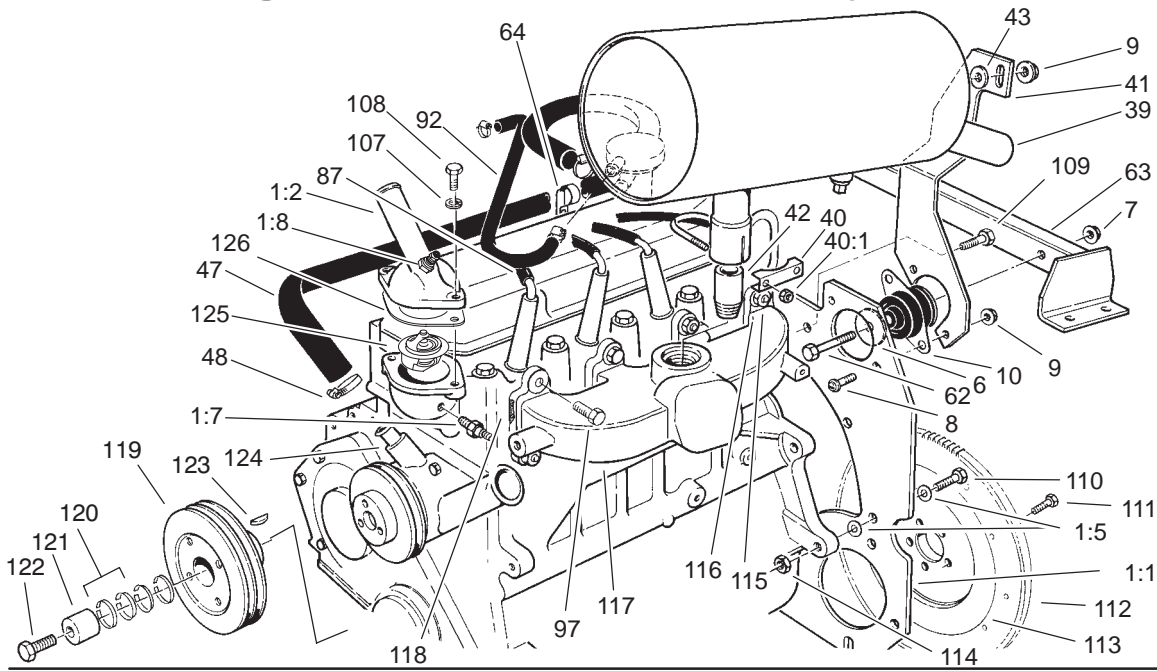


# Engine Component Assembly (Continued)

Ref. No.	Part No.	Qty.	Description	Ref. No.	Part No.	Qty.	Description
1:1	67-8440	1	Plate-Engine Support, Rear	57	3217-5	1	Nut-Hex
1:2	93-5410	1	Connector-Water	58	3253-3	1	Washer-Lock
1:5	3255-9	2	Washer-Lock, Ext	59	2412-31	1	Clamp-Boden
1:7	93-5395	1	Switch-Temperature	60	3256-22	1	Washer-Flat
1:8	94-7621	1	Sender-Temperature	61	321-4	1	Screw-HH
2	33115-030	3	Screw-HH	62	324-1 1	4	Screw-HH
3	48-9590	8	Washer-Lock	63	67-8480-03	1	Mount-Engine
4	93-7663-03	1	Mount-Engine, LH	64	2412-39	1	R-Clamp
6	53-9480	4	Washer-Snubber	65	67-8510	1	V-Belt, Fan
7	32128-37	4	Nut-HF	66	67-8890-03	1	Arm-Idler
8	3234-1 1	11	Screw-HHF	67	3231-22	2	Screw-CARR
9	3290-357	19	Nut-HHF	68	67-8340	1	Bar-Spacer
10	53-9680	4	Mount-Engine	69	63-8140	1	Pulley-Idler
11	21-1820	3	Stud-Retainer, Belt	70	3231-28	1	Screw-CARR
12	67-8460	1	Pully-Engine	71	48-7800	3	Screw-HH
13	43-3720	1	Collar-Bearing	72	67-8350	1	Bracket-Guide, Belt
14	32120-22	1	Ring-Snap, Internal	73	67-8310-03	1	Mount-Engine
15	32120-69	1	Ring-Snap	74	33114-045	4	Screw-HH
16	27-1960	1	Hub-Engine	75	302-10	1	Fitting-Grease
17	3257-33	1	Key-Woodruff	76	92-9785	1	V-Belt
18	3241-5	2	Screw-Set	77	75-9900-01	1	Support-Engine, Front
19	251-252	1	Bearing	78	67-8910	1	Adapter-Pump, Water
21	33094-00	1	Washer-Flat	79	33113-025	3	Screw-HH
22	42-9850	5	Washer-Lock, Spring	80	43-5930	3	Washer-Spring
26	33115-025	2	Screw-HH	81	3250-29	1	Screw-PPH
27	33114-020	1	Screw-HH	82	3256-21	1	Washer-Flat
28	322-12	4	Screw-HH	85	70-2040	1	Trim
29	3253-4	4	Washer-Lock	86	2412-1 19	2	Clamp-Worm
31	104-4606	1	Fan Spacer ASM	87	86-7921	4	Cover-Wire, Spark Plug
31:1	67-8390	1	Spacer-Fan	88	93-8489-03	1	Arm-Adj., Belt
31:2	104-4605	1	Spacer	89	3212-18	1	Screw-HH
32	67-8380-03	1	Hub-Pulley	90	3296-38	1	Nut-Lock NI
33	67-9150-03	1	Support-Governor	92	70-2050	1	Hose-Breather
34	3234-5	1	Screw	93	3234-18	1	Screw-HHF
35	3256-56	1	Washer-Flat	94	3290-224	1	Lockwasher-Pyramid
36	321-39	2	Screw-HH	95	32153-2	1	Nut-Lock, Side-Deform
37	32128-33	4	Nut-HF	96	63-1400	1	Rod-Belt
38	67-8920-03	1	Shield-Heat	97	33114-030	3	Screw-HH
39	67-9120	1	Muffler	†101		1	Pulley-Pump, Water
40	2112-6	1	Clamp-Muffler	†102		1	Clamp-V alve
40:1	3218-2	2	Nut-Jam	†103		1	Separator-Fuel
41	67-8420-03	1	Bracket	†104		1	Plug-Drain, Water
42	67-9130	1	Pipe-Inlet, Muffler	†105		1	Starter
43	5-0652	1	Spacer	†107		2	Washer-Lock
44	21-5640	1	Joint-Ball	†108		2	Screw-Cap
45	3253-12	1	Washer-Lock/Sp	†109		2	Bolt
46	3219-14	3	Nut-Hex	†110		4	Bolt
47	70-1670	1	Hose-Heat	†111		6	Bolt
48	2412-1 19	2	Clamp-Worm	†112		1	Gear-Ring, Flywheel
49	70-1910	1	Hose-Advance, Vacuum	†113		1	Flywheel ASM (Incl. Ref. #26)
50	67-8250	1	Rod-Throttle	†114		4	Nut
51	67-8240-03	1	Bracket-Control, Throttle	†115		6	Stud
52	321-6	2	Screw-HH	†116		6	Nut
53	67-8361	1	Governor ASM	†117		1	Manifold-Exhaust
54	25-8640	1	Screw-HH	†118		4	Gasket-Manifold
55	43-3780	1	Swivel-Cable	†119		1	Pulley
56	3296-20	1	Nut-Lock, NI	†120		2	Set-Ring, Locking

† Obtain from your local Ford Power Products Dealer

# Engine Component Assembly (Continued)

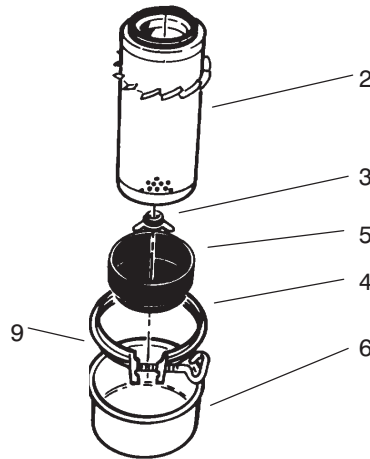
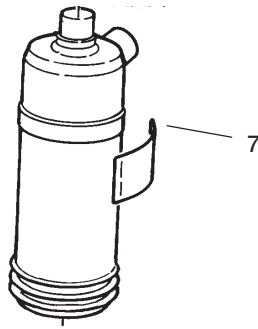


## Engine Component Assembly (Continued)

Ref. No.	Part No.	Qty.	Description
†121		1	Ring-Compression
†122		1	Bolt
†123		1	Key
†124		1	Kit-Pump, Water (Incl. Pulley & Gasket)
†125		1	Thermostat
†126		1	Gasket
†127		1	Pulley-Alternator
†128		1	Alternator

Ref. No.	Part No.	Qty.	Description

† Obtain from your local Ford Power Products Dealer



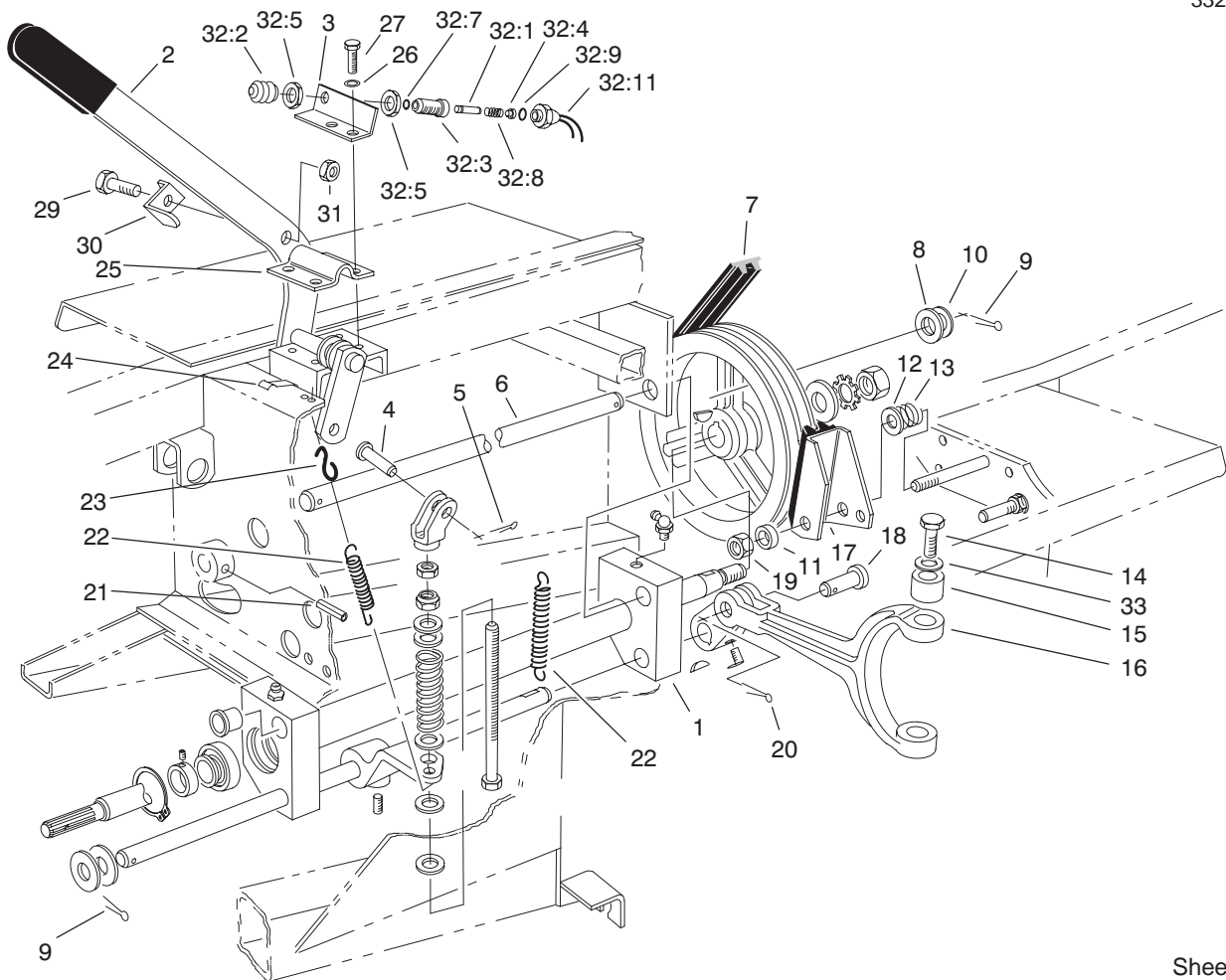
Sheet No.:A5  
T-3786

### Air Cleaner Assembly No. 27-7100

Ref. No.	Part No.	Qty.	Description
2	27-71 10	1	Element ASM
3	27-7120	1	Nut And Gasket ASM
4	27-7130	1	Clamp ASM
5	27-7140	1	Skirt-Baf fle
6	27-7150	1	A/C Cup ASM
7	27-7160	1	Decal-Installation
9	80-3330	1	Gasket

Ref. No.	Part No.	Qty.	Description



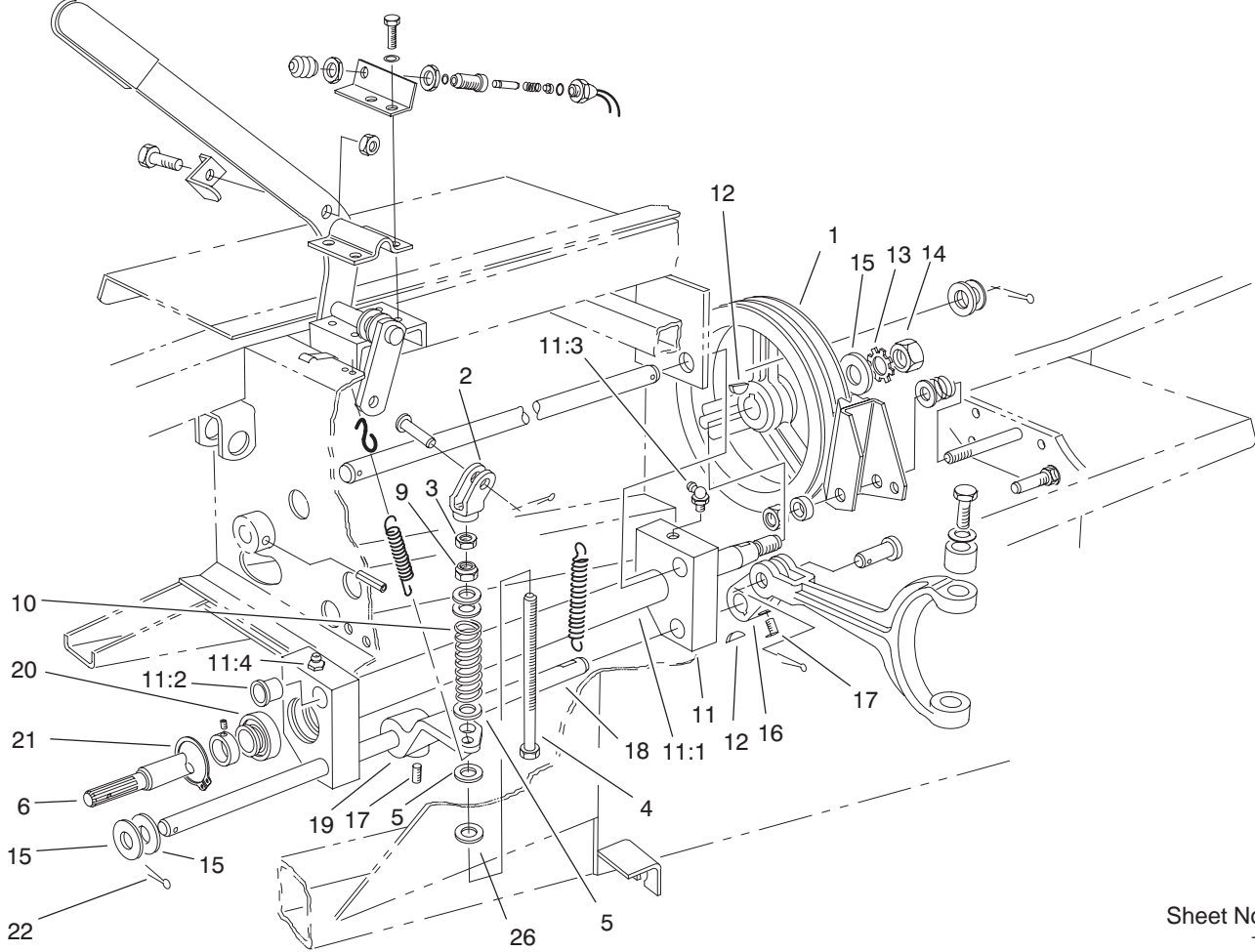


Sheet No.:8

## Power Take Off and Shaft Assembly

Ref. No.	Part No.	Qty.	Description	Ref. No.	Part No.	Qty.	Description
☆1		1	PTO ASM	26	3253-21	4	Washer-Lock
2	84-8500-01	1	Lever-PT O	27	32104-6	4	Screw-HH
3	84-8520-01	1	Bracket-Switch, PTO	29	321-4	1	Screw-HH
4	283-42	1	Pin-Clevis	30	86-7050	1	Bracket-Switch, Actuator
5	3272-6	1	Pin-Cotter	31	3296-16	1	Nut-Lock, NI
6	43-3860	1	Shaft-Pivot, PTO	32	43-9071	1	Limit Switch ASM
7	106-4383	1	V-Belt	32:1	43-8860	1	Plunger-Switch
8	3256-28	1	Washer-Flat	32:2	43-8870	1	Boot-Switch
9	3272-22	1	Pin-Cotter	32:3	43-8620	1	Pin-Guide, Switch
10	3-6498	3	Washer-Thrust	32:4	43-8610	1	Guide
11	3-8812	1	Spacer-Spring, Anchor	32:5	218-461	2	Nut-HH
12	3256-6	1	Washer-Flat	32:7	237-7	1	O-Ring
13	5-1747	1	Spring-Adjustment	32:8	43-8600	1	Spring-Compression
14	92-5727	2	Screw-Lock, Patch	32:9	237-30	1	O-Ring
15	92-5723	2	Bushing-Fork, PTO	32:11	72-4320	1	Switch-Ball, N.o.
16	92-4060-03	1	Fork-PT O	33	75-9890	6	Washer-Shim
17	27-7370	1	PTO Brake ASM				
18	93-3769	1	Pin-Clevis				
19	3296-28	1	Nut-Lock, NI				
20	3272-1 1	1	Pin-Cotter				
21	32121-9	1	Pin-Spring				
22	21-1830	2	Spring-PT O, Tension				
23	5-0701	1	Anchor				
24	212-93	3	Clamp-Casing				
25	21-1600	1	Clamp-Lever, PTO				

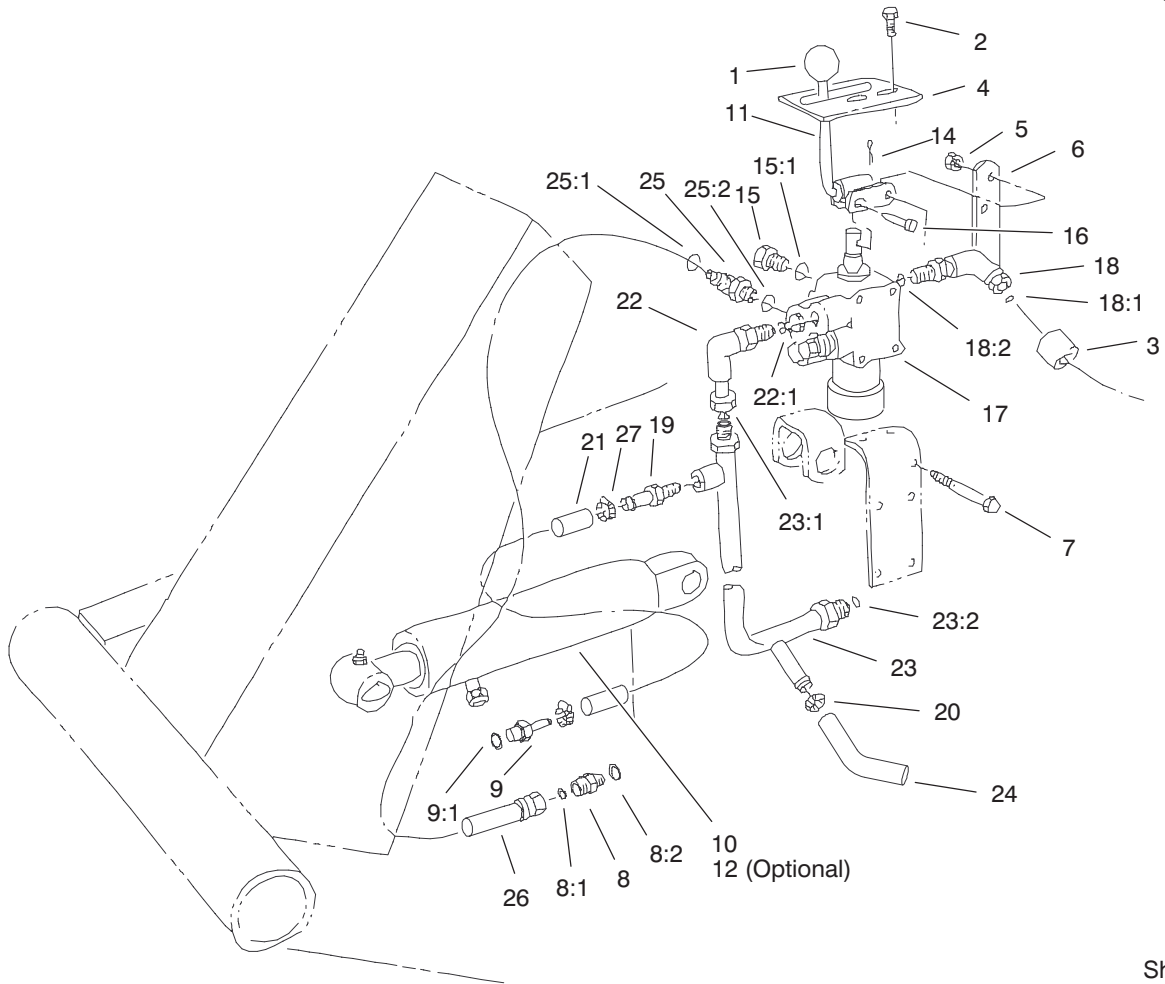
☆ Not serviced separately



# Power Take Off Assembly

Ref. No.	Part No.	Qty.	Description
1	21-0230	1	Pulley-PT O
2	43-5630	1	Yoke-PT O
3	3219-3	1	Nut-HH
4	27-7900	1	Screw-Adjusting
5	3256-41	4	Washer-Flat
6	43-5540	1	Shaft-PT O
9	3296-6	1	Nut-Lock, NI
10	21-0400	1	Spring-Compression
11	100-6599	1	PTO Pivot ASM
11:1	43-5500-01	1	Pivot-PT O
11:2	256-1 13	4	Bushing-Flange
11:3	302-10	1	Fitting-Grease
11:4	302-2	1	Fitting-Grease
12	3257-5	3	Key-Woodruff
13	3254-7	1	Washer-Lock, Int
14	3219-7	1	Nut-Hex
15	3256-28	3	Washer-Flat
16	92-4058	1	Arm-PT O
17	3246-3	4	Screw-HS
18	43-5550	1	Shaft-Actuator , PTO
19	43-5570	1	Arm-Actuator
20	251-252	2	Bearing
21	32120-22	2	Ring-Snap, Internal
22	3272-22	1	Pin-Cotter
26	5-0652	1	Spacer

Ref. No.	Part No.	Qty.	Description

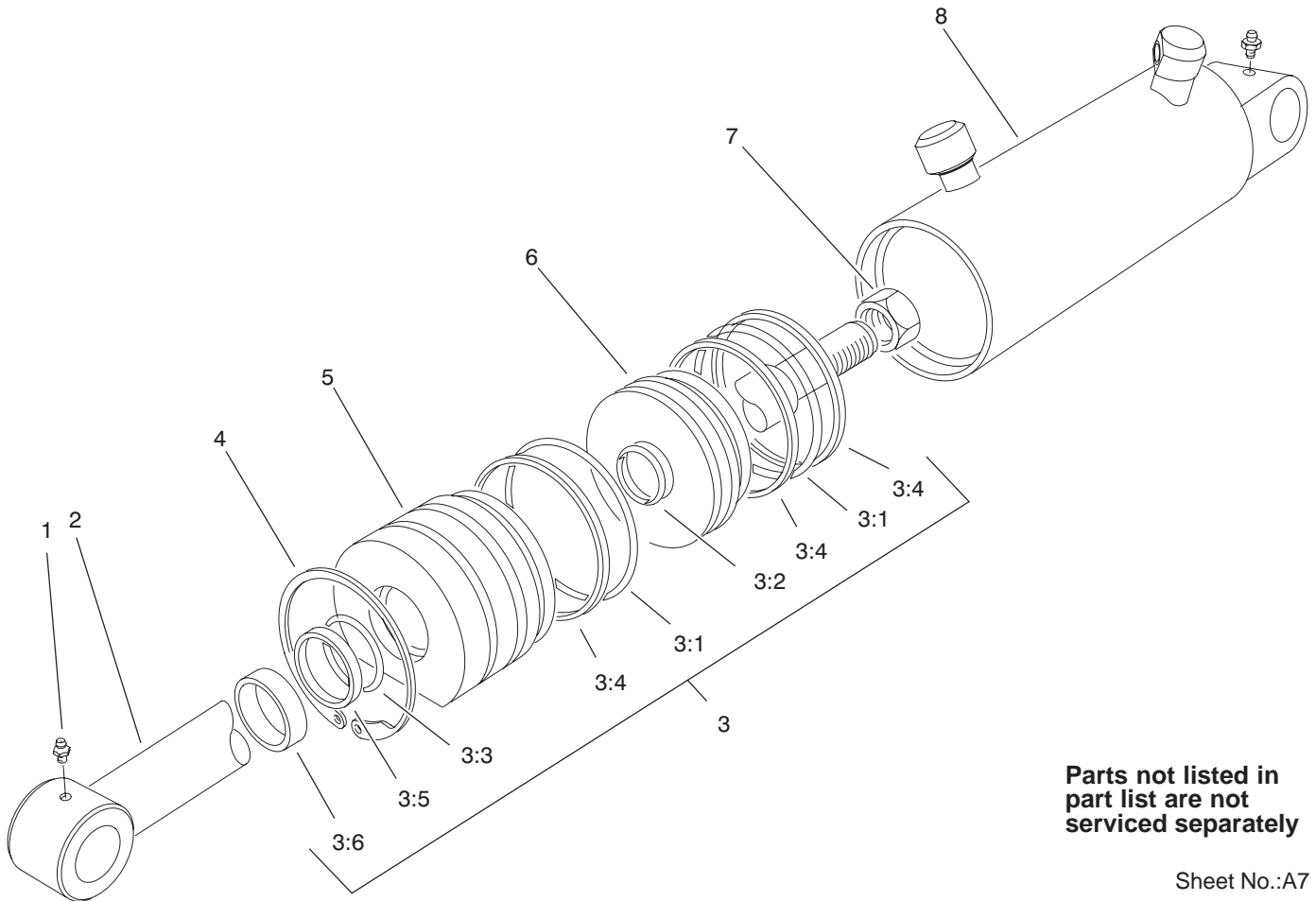


Sheet No.:9

## Valve and Cylinder Assembly

Ref. No.	Part No.	Qty.	Description
1	233-21	1	Knob
2	32144-10	2	Screw-HWH
3	38-3400	1	Guard-Rubber
4	105-7806	1	Latch-Lever , Valve
5	3296-42	5	Nut-Lock, NI
6	21-9010	1	Lever-V valve, Pivot Mount
7	321-23	5	Screw-HH
8	340-2	1	Fitting-Straight, HYD
8:1	237-22	1	O-Ring
8:2	237-42	1	O-Ring
9	95-8849	1	Fitting-Straight, HYD
9:1	237-78	1	O-Ring
10	100-6591	1	Cylinder-HYD
11	105-7839-03	1	Valve Lever ASM
12	100-6586	1	Cylinder-HYD
14	3272-6	1	Pin-Cotter
15	353-512	1	Plug
15:1	237-78	1	O-Ring
16	283-17	1	Pin-Clevis
17	105-7821-01	1	Valve ASM
18	340-99	1	Fitting-HYD, 90°
18:1	237-30	1	O-Ring
18:2	237-42	1	O-Ring
19	304-73	1	Connector-Hose
20	2412-36	1	Clamp-Hose

Ref. No.	Part No.	Qty.	Description
21	92-7834	1	Hose
22	340-1 10	1	Fitting-90 °, Swivel
22:1	237-42	1	O-Ring
23	63-9260	1	Manifold-V valve
23:1	237-22	1	O-Ring
23:2	237-30	1	O-Ring
24	63-8990	1	Hose-Out/Cool
25	340-97	1	Fitting-HYD, 90°
25:1	237-22	1	O-Ring
25:2	237-78	1	O-Ring
26	92-7833	1	Hose ASM
27	2412-108	1	Clamp-W orm



**Parts not listed in  
part list are not  
serviced separately**

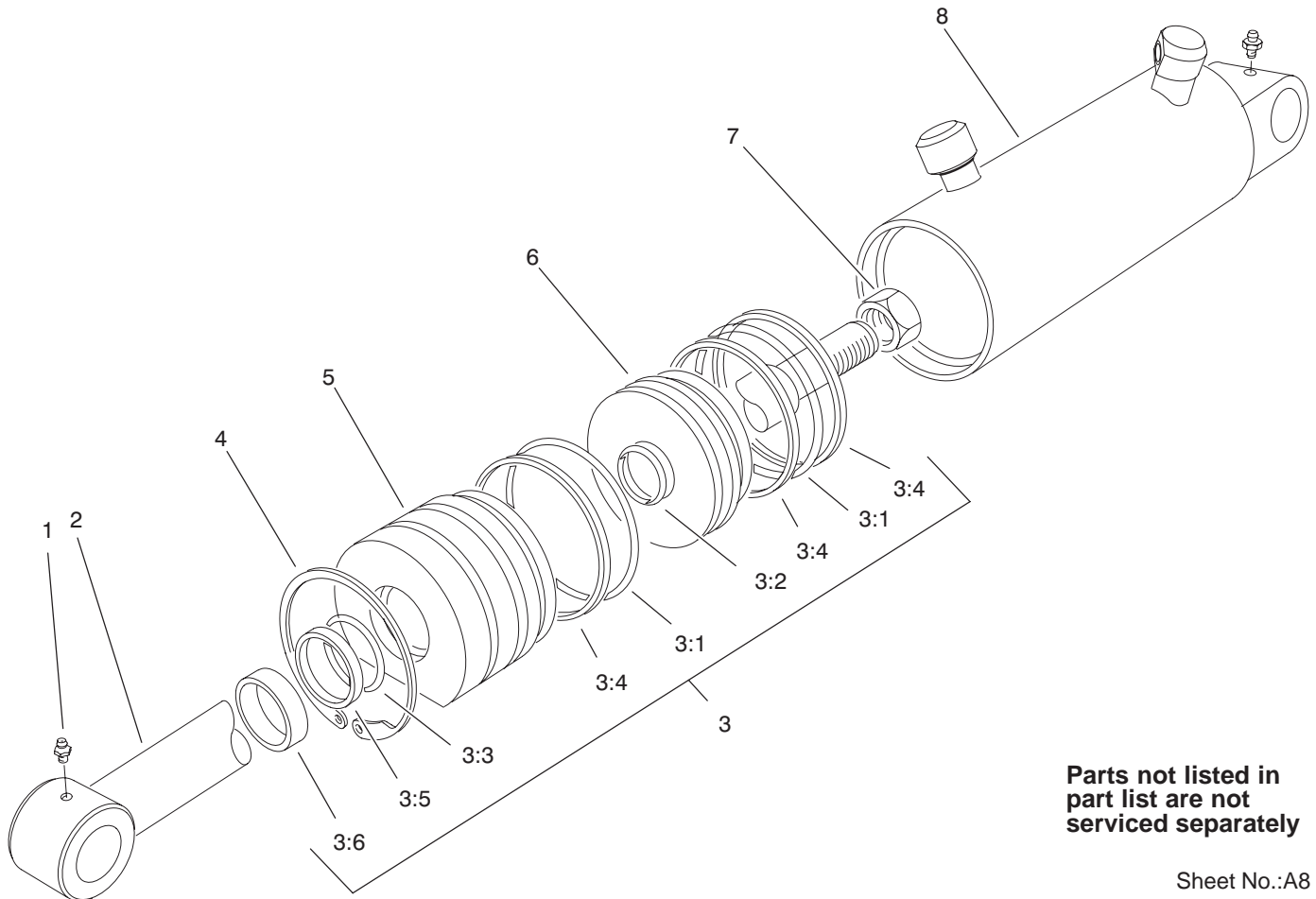
Sheet No.:A7  
T-3790

## Hydraulic Cylinder (2-1/2in Bore) Assembly No. 100-6586

Ref. No.	Part No.	Qty.	Description
1	302-55	2	Zerk
☆2		1	Shaft
3	61-4960	1	Seal Repair Kit
☆3:1		2	O-Ring
☆3:2		1	O-Ring
☆3:3		1	O-Ring
☆3:4		3	Backup
☆3:5		1	Backup
☆3:6		1	Seal-Dust
4	61-4990	1	Ring-Retaining
☆5		1	Head
☆6		1	Piston
☆7		1	Nut
☆8		1	Barrel

Ref. No.	Part No.	Qty.	Description

☆ Not serviced separately



Parts not listed in part list are not serviced separately

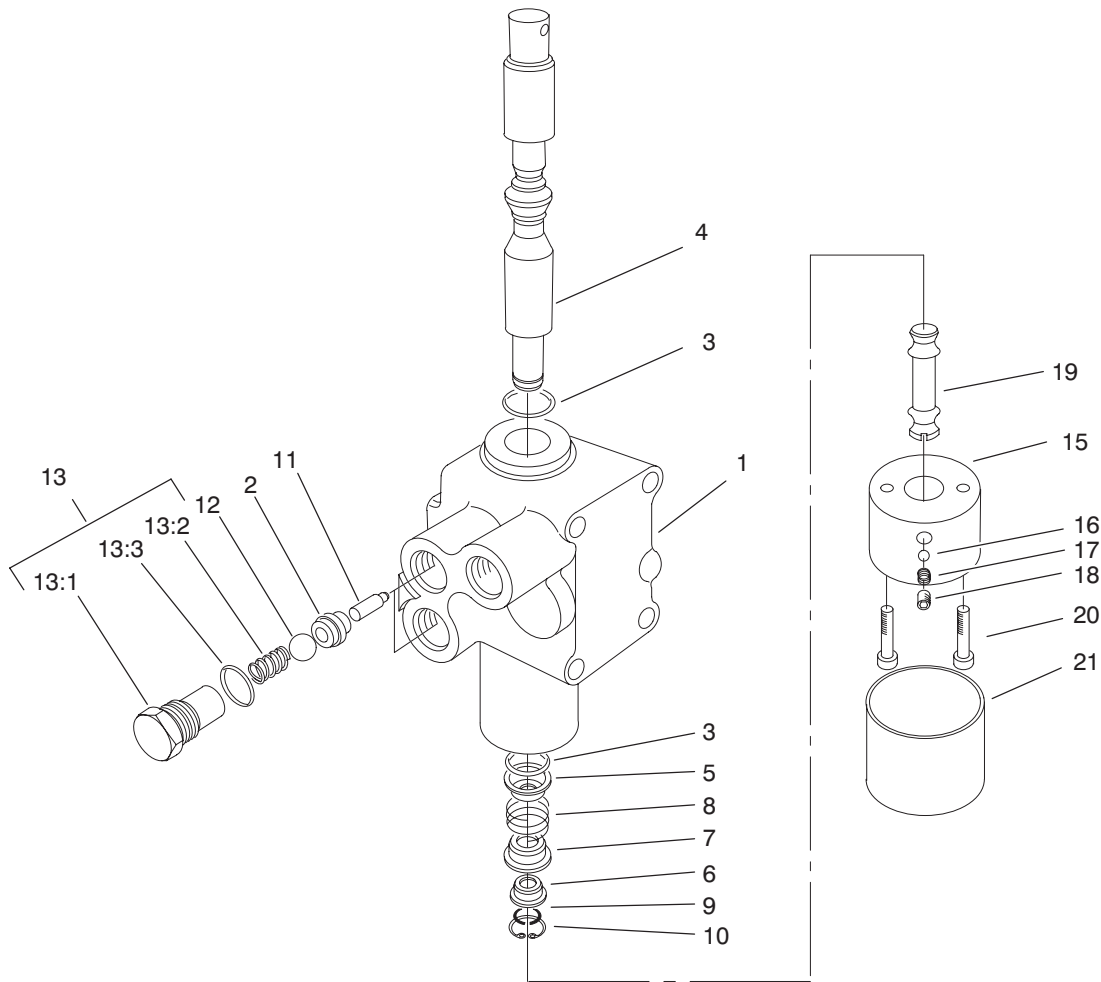
Sheet No.:A8  
T-3790

## Hydraulic Cylinder (3in Bore) Assembly No. 100-6591

Ref. No.	Part No.	Qty.	Description
1	302-55	2	Zerk
☆2		1	Shaft
3	67-5500	1	Repair Kit
☆3:1		2	O-Ring
☆3:2		1	O-Ring
☆3:3		1	O-Ring
☆3:4		3	Backup
☆3:5		1	Backup
☆3:6		1	Seal-Dust
4	67-5470	1	Ring-Snap
☆5		1	Head
☆6		1	Piston
☆7		1	Nut
☆8		1	Barrel

Ref. No.	Part No.	Qty.	Description

☆ Not serviced separately



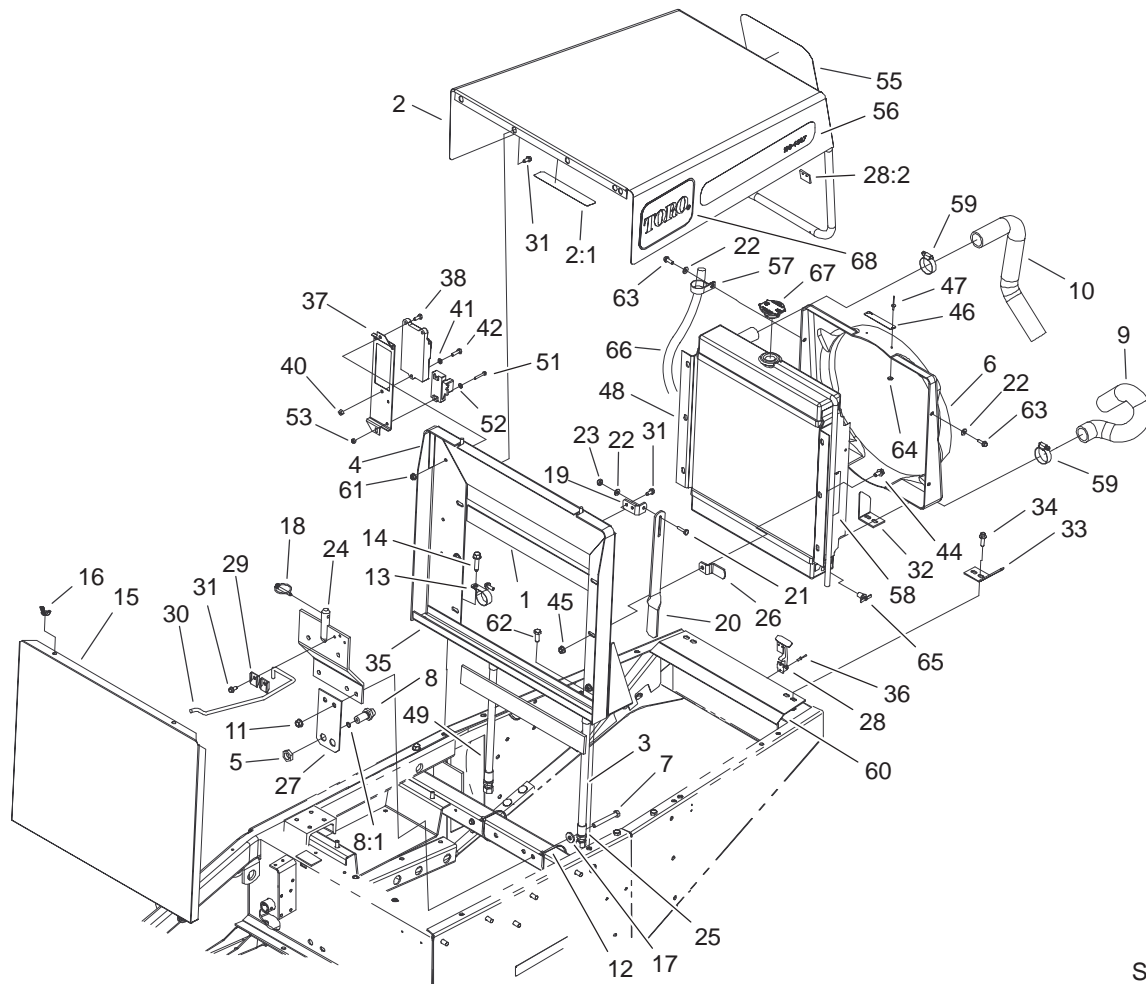
Sheet No.:A9  
T-3834

## Valve Assembly No. 105-7821-01

Ref. No.	Part No.	Qty.	Description
☆1		1	Body
2	22-8370	2	Seat-V valve
3	22-8500	2	O-Ring
4	105-7826	1	Spool
5	22-8380	1	Retainer
6	22-8400	1	Spacer
7	22-8390	1	Retainer
8	22-8410	1	Spring
9	22-8480	1	Ring-Snap
10	22-8490	1	Ring-Snap
11	22-8360	2	Pin
12	22-8350	2	Ball
☆13		2	Plug ASM
13:1	22-8330	1	Plug
13:2	22-8340	1	Spring
13:3	237-42	1	O-Ring
15	105-7828	1	Barrel-Detent
16	105-7829	2	Ball-Steel
17	105-7830	2	Spring
18	105-7831	2	Screw-Set
19	105-7832	1	Stud-Detent
20	105-7833	2	Screw-HS
21	105-7834	1	Cap-Dust, Round

Ref. No.	Part No.	Qty.	Description

☆ Not serviced separately

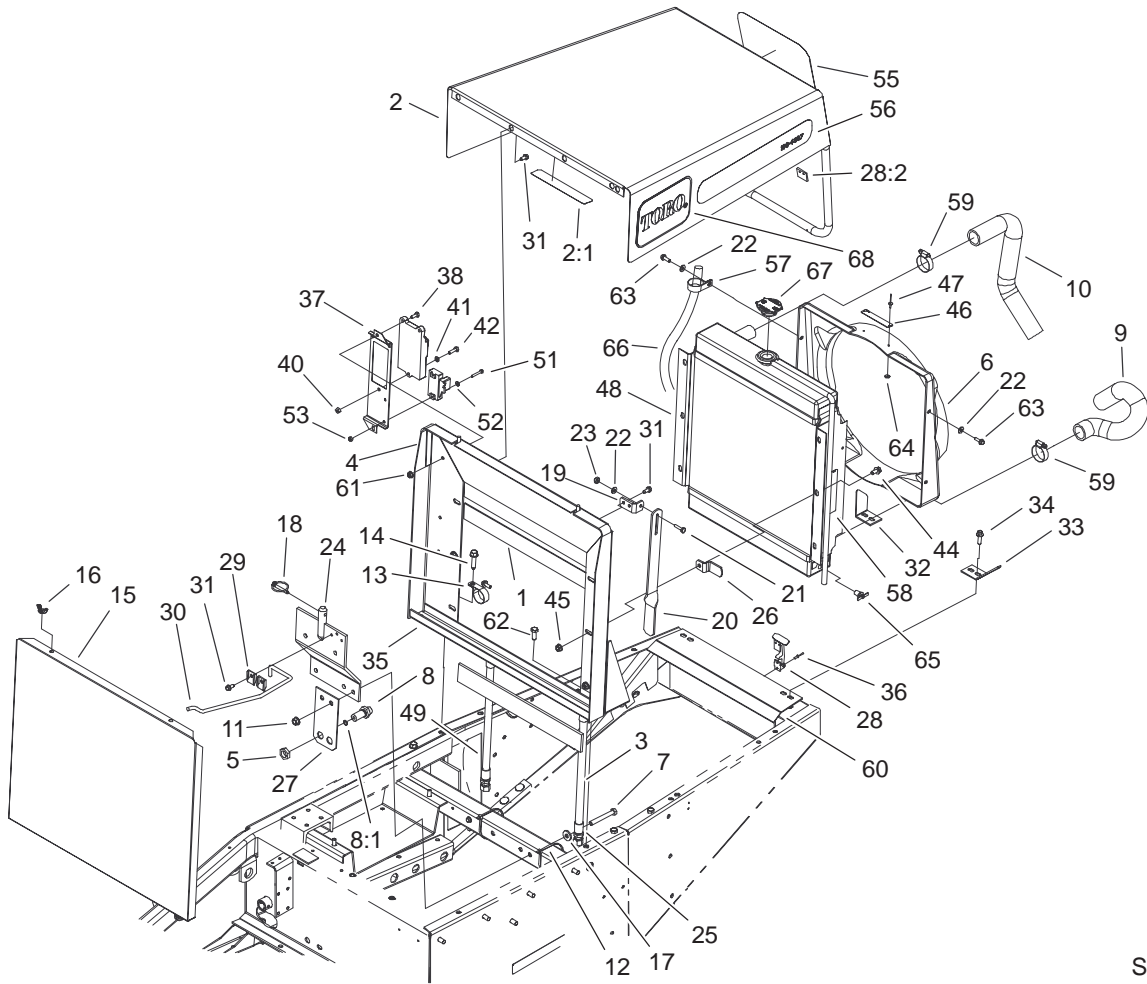


Sheet No.:10

## Radiator and Hood Assembly

Ref. No.	Part No.	Qty.	Description
1	43-3320	2	Foam-Radiator
2	105-2919	1	Hood ASM
2:1	82-8970	1	Decal-Coolant, Engine
3	63-9010	1	Hose-Coolant, Transmission
4	86-9400-01	1	Support-Radiator
5	340-70	2	Nut-Lock
6	67-8640	1	Shroud-Fan
7	323-14	3	Screw-HH
8	340-71	2	Fitting-Straight, Bulkhead
8:1	237-22	2	O-Ring
9	67-8660	1	Hose-Radiator, Lower
10	70-1630	1	Hose-Radiator, Upper
11	32128-21	3	Nut-HF
12	3290-379	6	Tie-Cable
13	2412-4	2	Clamp
14	11-0590	3	Screw-HWHTF
16	32103-2	2	Nut-Wing
17	5-0838	3	Washer
18	283-76	1	Pin-Lynch
19	84-5330	1	Bracket-Prop, Hood
20	84-5380	1	Strap-Prop, Hood
21	321-6	1	Screw-HH
22	3256-22	5	Washer-Flat
23	3296-16	1	Nut-Lock, NI

Ref. No.	Part No.	Qty.	Description
24	105-2542-01	1	Bracket-Support, Seat
25	38-3400	1	Guard-Rubber
26	86-7060-01	1	Bracket-Hold Down, Hood
27	68-9160	1	Bracket
28	59-9740	1	Flex Draw Latch ASM
28:2	249-40	1	Keeper
29	3-6657	2	Clip-Skid
30	86-7040	1	Rod-Prop, Seat
31	32144-10	7	Screw-HWH
32	62-3010-01	1	Bracket-RH
33	62-3020-01	1	Bracket-LH
34	3234-17	4	Screw-HHF
35	70-1790	1	Strip-Foam, Sealing
36	3290-55	4	Rivet-Pop
37	105-2500-03	1	Bracket-lcm
38	321-39	2	Screw-HH
40	3217-5	3	Nut-Hex
41	3253-3	3	Washer-Lock
42	321-5	3	Screw-HH
44	3234-14	13	Screw-HHF
45	32128-20	13	Nut-HF
46	76-8750	1	Plate-Warning
47	3269-13	2	Rivet-Pop
48	67-8590	1	Radiator ASM
49	63-8960	1	Hose



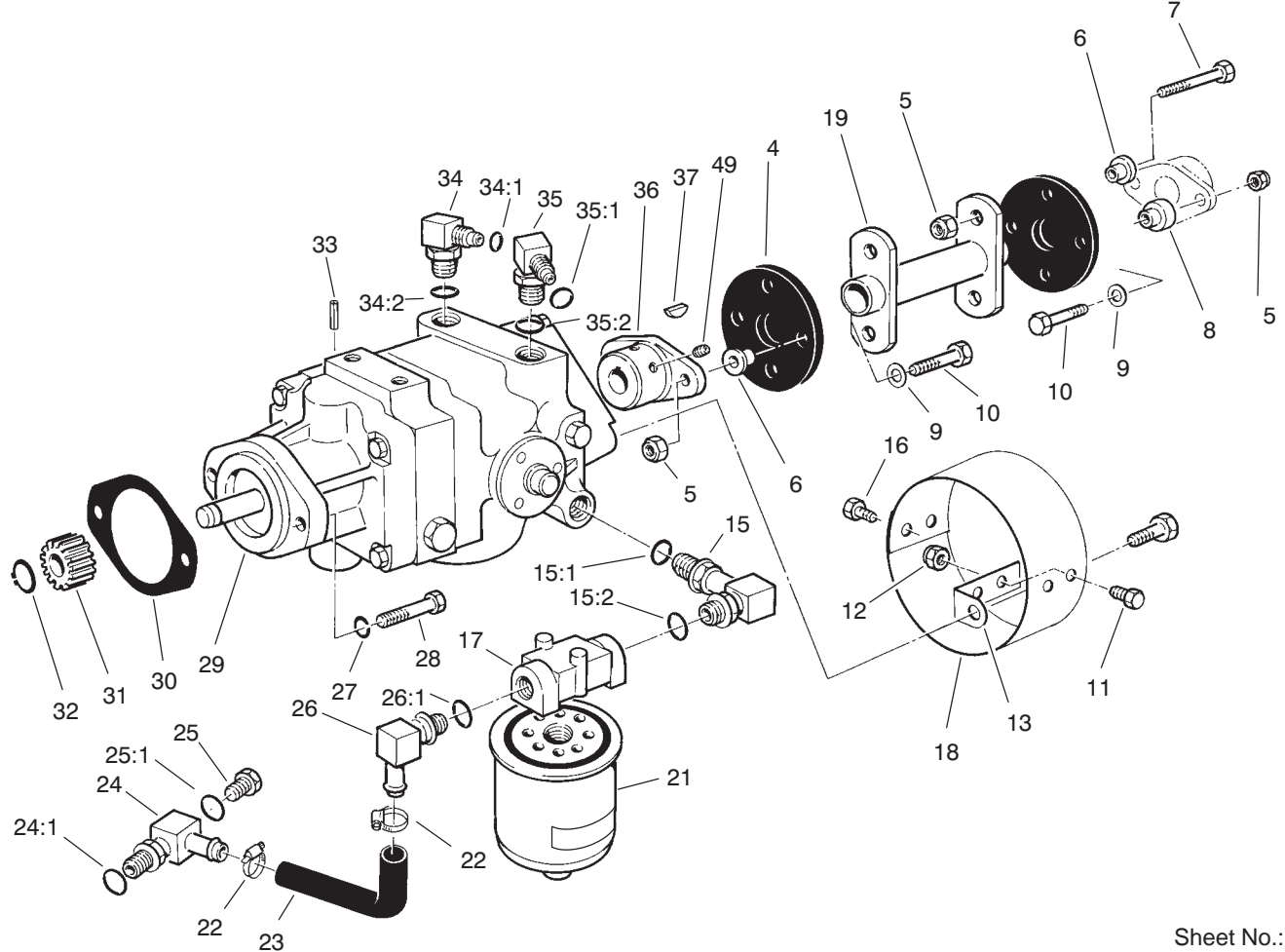
Sheet No.:10

## Radiator and Hood Assembly (Continued)

Ref. No.	Part No.	Qty.	Description
51	3290-360	2	Screw-HH
52	3256-51	2	Washer-Flat
53	3296-2	2	Nut-Lock
55	66-6140	1	Decal
56	106-4397	2	Decal-Gm345
57	2412-74	1	R-Clamp
58	77-3100	2	Decal-W arning
59	2412-3	4	Clamp-Hose
60	70-1890-03	1	Guard-Flywheel
61	32128-33	2	Nut-HF
62	3234-25	1	Bolt-HF
63	32104-109	4	Screw-HWH
64	3269-10	2	Washer-Back
65	304-46	1	Draincock
66	75-4702	1	Hose-Fuel
67	66-3240	1	Cap-Radiator
68	62-7400	2	Decal-Logo, Toro

Ref. No.	Part No.	Qty.	Description
----------	----------	------	-------------



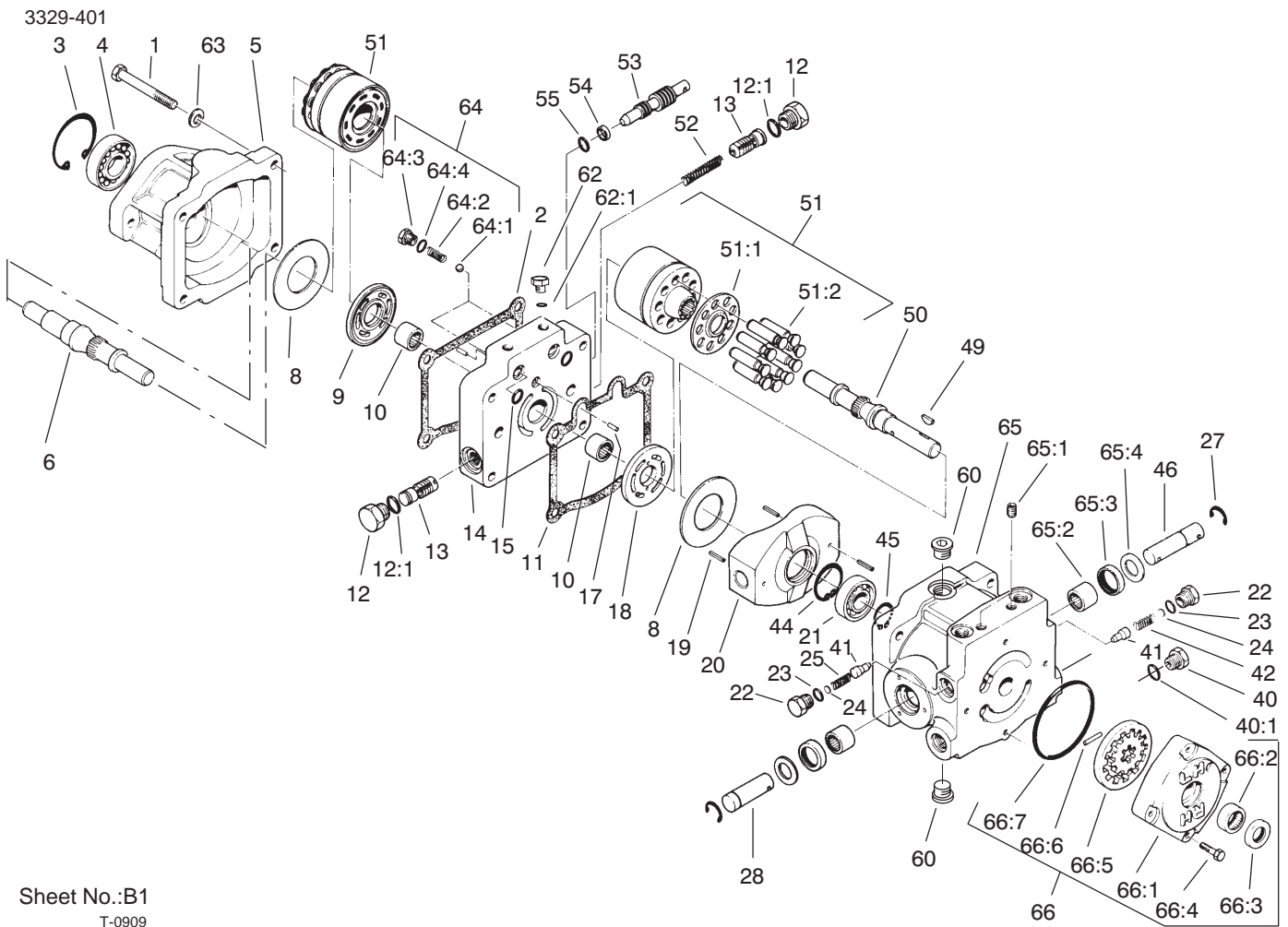


Sheet No.:12

## Hydrostatic Transmission Assembly

Ref. No.	Part No.	Qty.	Description
4	44-2230	2	Coupling-Rubber
5	32152-1	8	Nut-Lock, NI
6	27-6600	6	Spacer-Coupling
7	322-6	6	Screw-HH
8	27-6590	2	Spacer-Coupling, Rubber
9	3256-3	4	Washer-Flat
10	322-8	2	Screw-HH
11	321-2	2	Screw-HH
12	3296-42	6	Nut-Lock, NI
13	54-9290	2	Bracket-Mounting
15	68-8660	1	Fitting-HYD, 90°
15:1	237-80	1	O-Ring
15:2	237-81	1	O-Ring
16	321-4	2	Screw-HH
17	68-8990	1	Filter Head ASM
18	54-9300-03	1	Cover-Shaft, Pump
19	46-6390-03	1	Coupling-Drive
21	23-9740	1	Filter-Oil
22	2412-34	2	Clamp-Hose
23	68-9650	1	Hose-Axle
24	70-2620	1	Fitting-HYD, 90°
24:1	237-81	1	O-Ring
25	353-508	1	Plug
25:1	237-42	1	O-Ring
26	353-987	1	Fitting-HYD, 90°

Ref. No.	Part No.	Qty.	Description
26:1	237-81	1	O-Ring
27	3253-21	2	Washer-Lock
28	323-7	2	Screw-HH
29	92-8947	1	Transmission ASM
30	41-8760	1	Gasket
31	86-7220	1	Gear-Pinion
32	32120-72	1	Ring-Snap
33	32121-6	1	Pin-Roll
34	340-77	1	Fitting-HYD, 90°
34:1	237-22	1	O-Ring
34:2	237-42	1	O-Ring
35	340-99	1	Fitting-HYD, 90°
35:1	237-30	1	O-Ring
35:2	237-42	1	O-Ring
36	33-4380	1	Hub-Pump
37	3257-32	1	Key-W oodruff
49	3241-5	2	Screw-Set



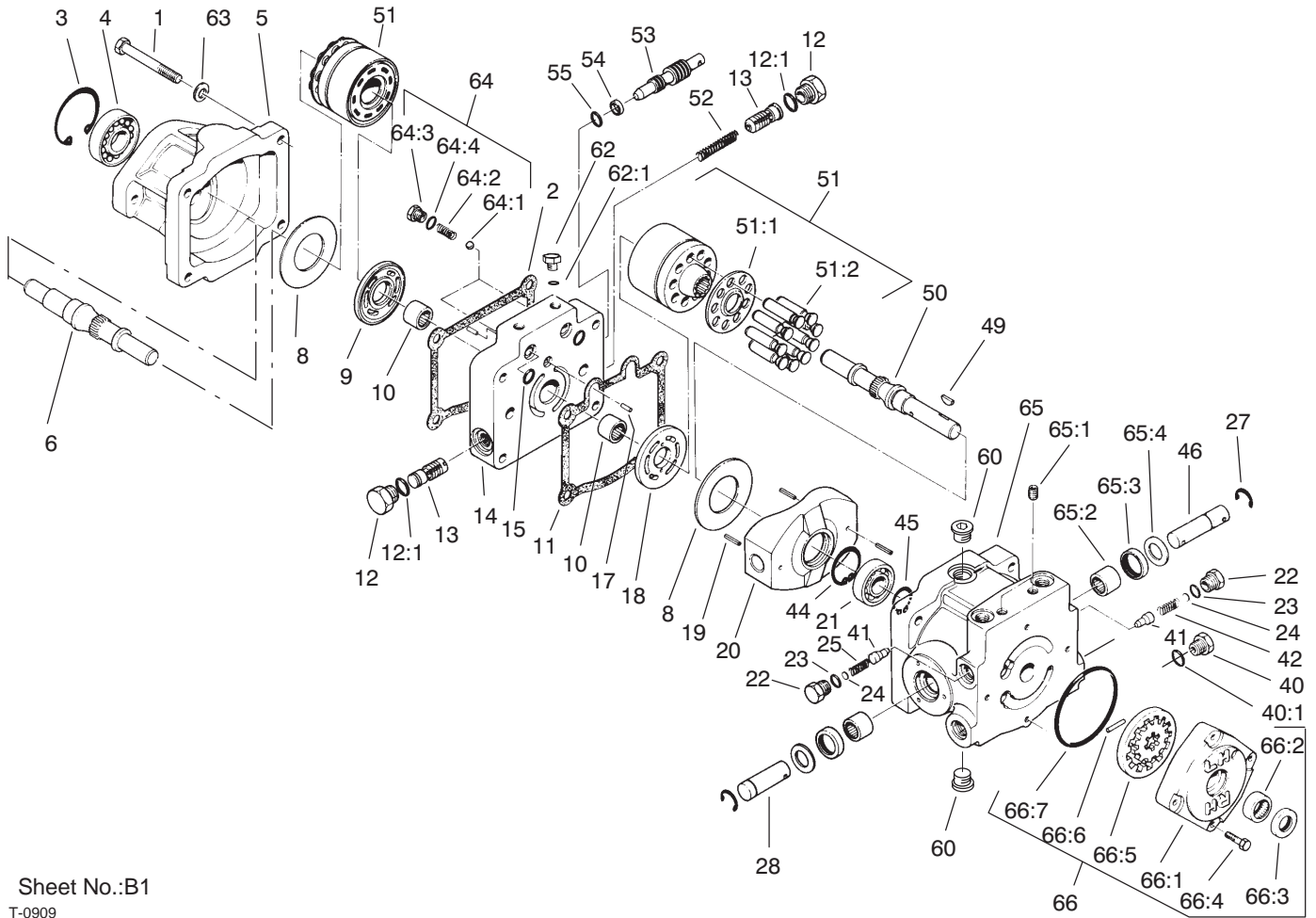
Sheet No.:B1  
T-0909

## Transmission Assembly No. 92-8947

Ref. No.	Part No.	Qty.	Description
1	323-56	4	Screw-HH
2	67-9100	1	Gasket
3	32120-8	1	Ring-Snap
4	72-3750	1	Bearing-Roller
5	67-9080	1	Housing-Motor
6	46-8410	1	Shaft-Motor
8	25-2380	2	Plate-Thrust
9	25-2390	1	Plate-V valve, Motor
10	46-8400	2	Bearing-Shaft
11	25-2400	1	Gasket
12	353-550	2	Plug-HYD
12:1	237-79	1	O-Ring
13	25-2410	2	Valve ASM
14	92-8918	1	Section-Center
15	93-4132	2	O-Ring
17	25-2430	2	Pin-Dowel
18	25-2440	1	Plate-V valve, Pump
19	32121-91	3	Pin-Spring, Coil
20	25-2450	1	Plate-Swash, Variable
21	251-8	1	Bearing-Ball
22	25-2460	2	Plug-HH
23	237-86	4	O-Ring
24	25-2470	2	Pack-Shim
25	25-2480	1	Spring-V valve
27	32151-46	2	Ring-Retaining
28	25-2500	1	Shaft-T runnion

Ref. No.	Part No.	Qty.	Description
40	353-551	1	Plug-HH
40:1	237-80	1	O-Ring
41	83-7260	2	Cone-Relief, Charge
42	25-2570	1	Spring-V valve
44	32120-11	1	Ring-Retaining
45	32120-15	1	Ring-Snap, Ext
46	25-2580	1	Shaft-T runnion
49	3257-32	1	Key-W oodruff
50	67-8020	1	Shaft-Pump
51	48-1800	2	Cylinder Block Kit
☆51:1		1	Retainer-Slipper
☆51:2		9	Piston ASM
52	25-2610	1	Spring-V valve
53	88-8220	1	Valve-By-Pass
54	25-2630	1	Ring-Back-Up
55	237-22	1	O-Ring
60	67-9090	1	Plug
62	92-8776	4	Plug
62:1	92-8777	1	O-Ring
63	93-0312	4	Washer-Hardened
64	99-5689	1	Check Valve ASM
64:1	25-2490	1	Ball
64:2	25-2640	1	Spring-V valve
64:3	25-2650	1	Plug-V valve, Check
64:4	237-86	1	O-Ring
65	54-7890	1	Housing Kit

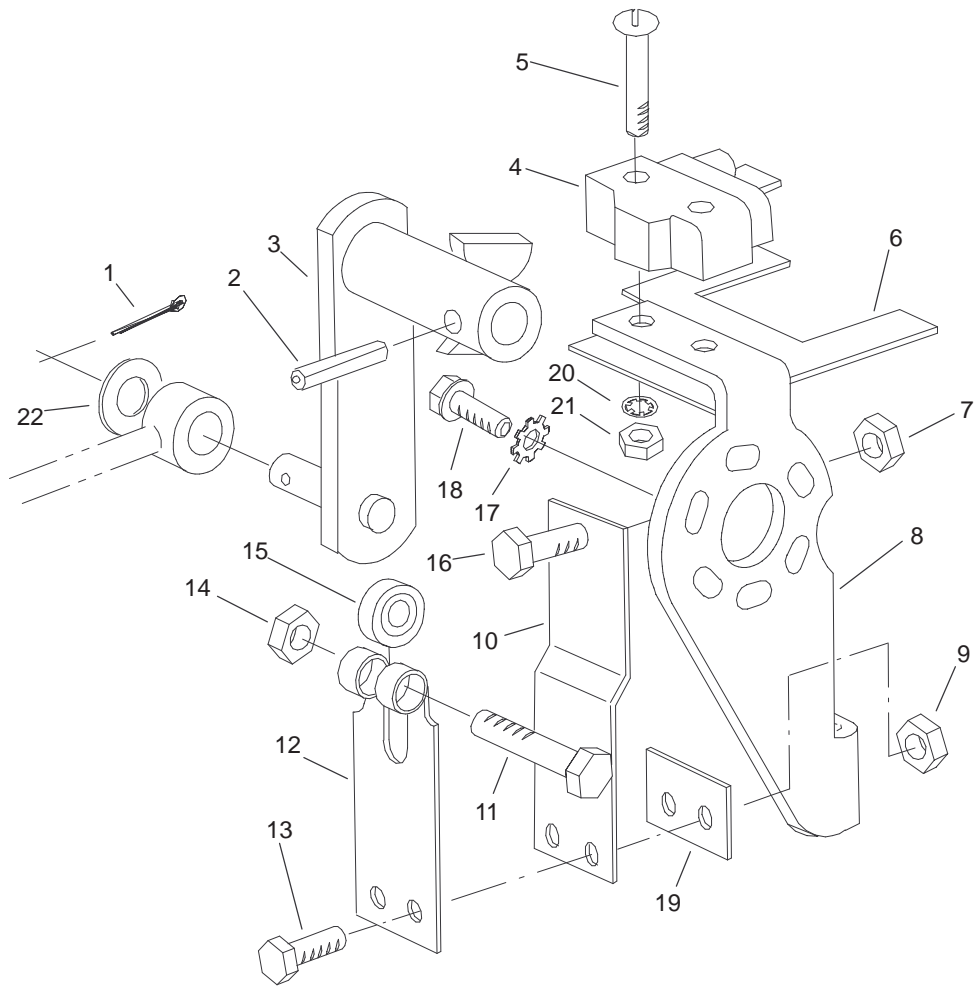
☆ Not serviced separately



Sheet No.:B1  
T-0909

## Transmission Assembly No. 92-8947 (Continued)

Ref. No.	Part No.	Qty.	Description	Ref. No.	Part No.	Qty.	Description
65:1	285-17	2	Plug-Pipe				
65:2	252-82	2	Bearing-Needle				
65:3	25-3210	2	Seal-Lip				
65:4	25-2510	2	Washer-Flat				
66	25-3190	1	Charge Pump Kit				
66:1	25-2550	1	Housing-Pump, Charge				
66:2	67-8050	1	Bearing-Needle				
66:3	93-4133	1	Seal-Lip				
66:4	322-4	4	Screw-HH				
66:5	25-2540	1	Gerotor ASM				
66:6	25-2530	1	Pin-Straight, Headless				
66:7	237-95	1	O-Ring				

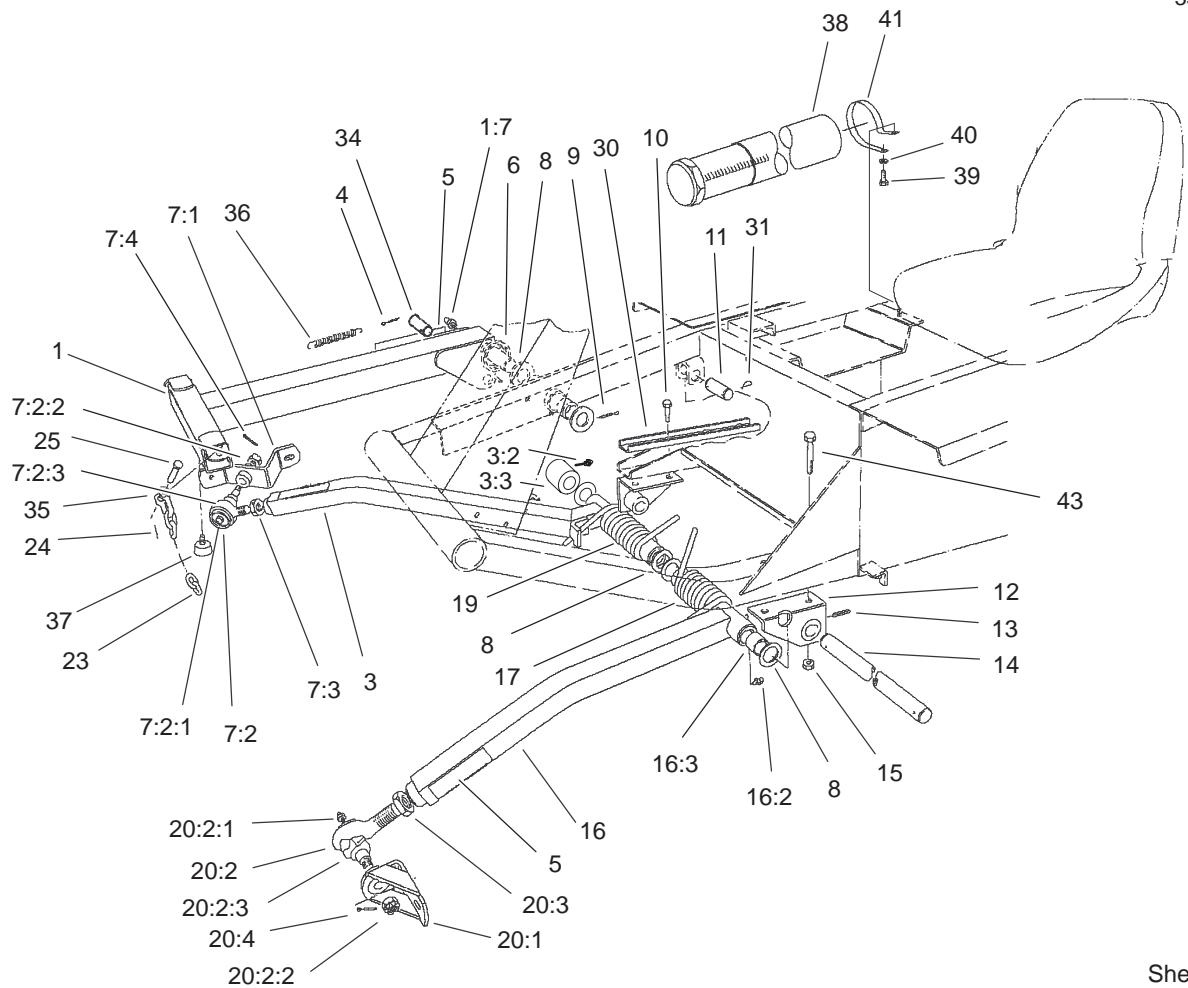


Sheet No.:13

## Neutral Centering Device Assembly

Ref. No.	Part No.	Qty.	Description
1	3272-10	1	Pin-Cotter
2	32121-24	1	Pin-Spring
3	28-9570-03	1	Lever-Pump
4	29-6163	1	Switch-Micro
5	3249-11	2	Screw
6	46-8810	1	Stop-Spring, Leaf
7	3219-2	1	Nut-Hex
8	29-6120-03	1	Plate-Pump
9	3296-42	2	Nut-Lock, NI
10	29-6170	1	Leaf Spring ASM
11	322-17	1	Screw-HH
12	29-6150	1	Spring-Leaf
13	321-6	2	Screw-HH
14	3296-29	1	Nut-Lock, NI
15	251-259	1	Bearing
16	3210-7	1	Screw-HH
17	3255-7	3	Washer-Lock/Ext
18	49-2040	3	Screw-Tapping
19	51-3150	1	Shim
20	3254-9	2	Washer-Lock/Int
21	3217-16	2	Nut-Hex
22	3256-6	1	Washer-Flat

Ref. No.	Part No.	Qty.	Description



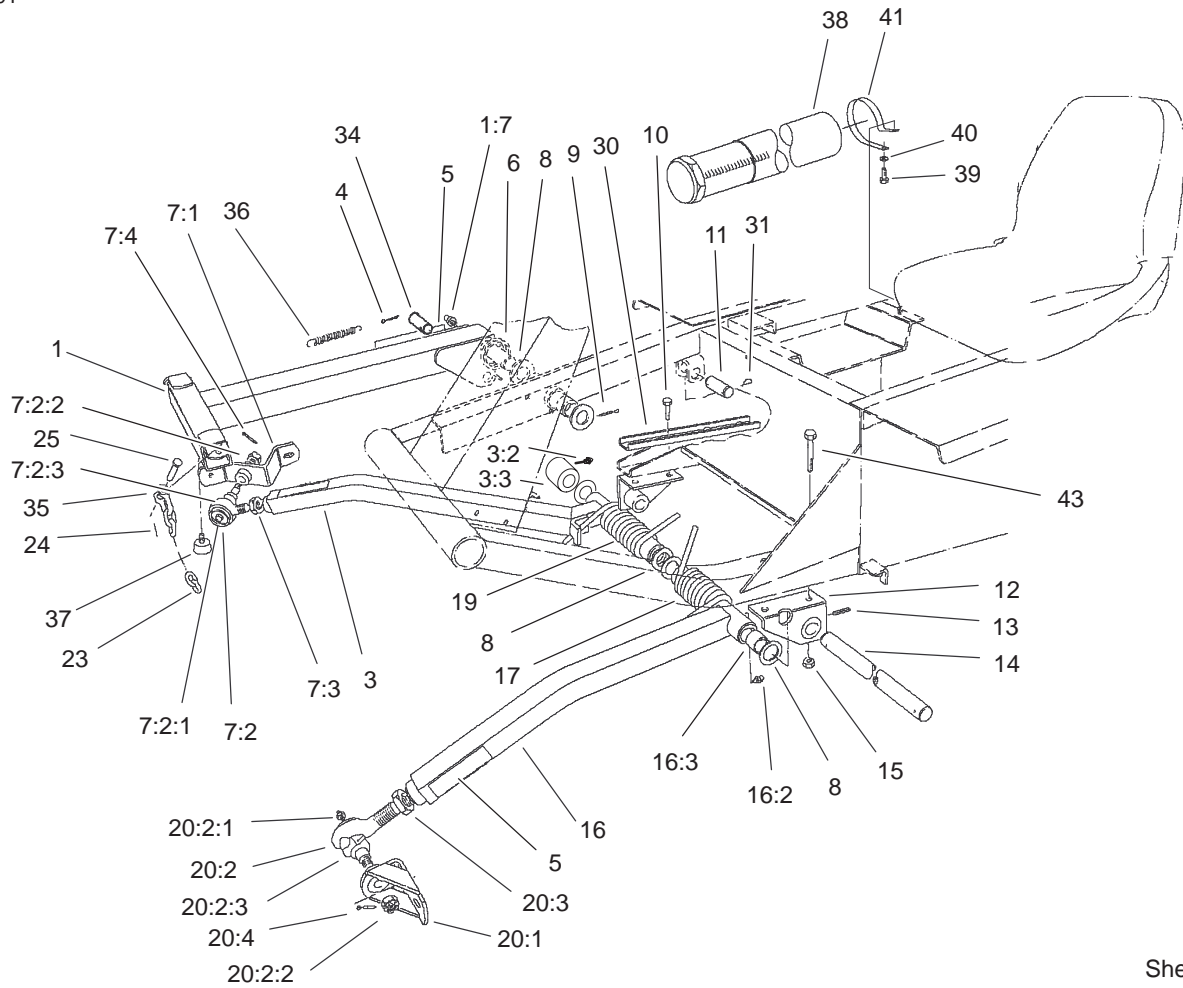
Sheet No.:15

## Push Arm Assembly

Ref. No.	Part No.	Qty.	Description
1	66-6370	1	Arm-Lift
1:7	302-5	1	Fitting-Grease
*1:8	3290-472	1	Insert-Threaded
3	66-7150	1	Arm-Push, RH
3:2	302-33	1	Fitting-Grease
3:3	256-126	2	Bushing
4	3272-24	1	Pin-Cotter
5	55-4300	3	Decal-W arning
6	46-8840-01	1	Spring-Arm, Lift
7	18-2869-01	1	RH Ball Joint ASM
7:1	21-3020-01	1	Mount-Balljoint, RH
7:2	86-8100-01	1	Joint-Ball
7:2:1	302-5	1	Fitting-Grease
7:2:2	32136-2	1	Nut-SHH
7:2:3	105-7835	1	Seal
7:3	21-3000	1	Nut-HJ, Push Arm
7:4	3272-11	1	Pin-Cotter
8	5-1754	6	Washer-Pulley, Countershaft
9	3272-33	1	Pin-Cotter
10	324-4	2	Screw-HH
11	3-7292	1	Pin
12	21-2860-01	2	Bracket-Arm, Push
13	32121-84	2	Pin-Coil
14	21-2990	1	Shaft-Pivot
15	32128-42	4	Nut-HF

Ref. No.	Part No.	Qty.	Description
16	21-2960	1	Arm-Push, LH
16:2	302-33	1	Fitting-Grease
16:3	256-126	2	Bushing
17	105-9550-01	1	Spring-Counter Balance, LH (Light)
17	21-2900-01	1	Spring-Counter Balance, LH
19	21-2890-01	1	Spring-Counter Balance, RH
20	18-2879-01	1	LH Ball Joint ASM
20:1	21-3050-01	1	Mount-Ball Joint, LH
20:2	86-8100-01	1	Joint-Ball
20:2:1	302-5	1	Fitting-Grease
20:2:2	32136-2	1	Nut-SHH
20:2:3	105-7835	1	Seal
20:3	21-3000	1	Nut-HJ, Push Arm
20:4	3272-11	1	Pin-Cotter
23	3-1365	3	Chain
24	3272-10	6	Pin-Cotter
25	283-10	6	Clevis
30	23-1950-01	1	Support-Reinforcement
31	5-3126	3	Pin-Spring
34	24-9510	1	Pin
35	5-2942	6	Shackle
36	21-1830	1	Spring-PT O, Tension

\* Not illustrated

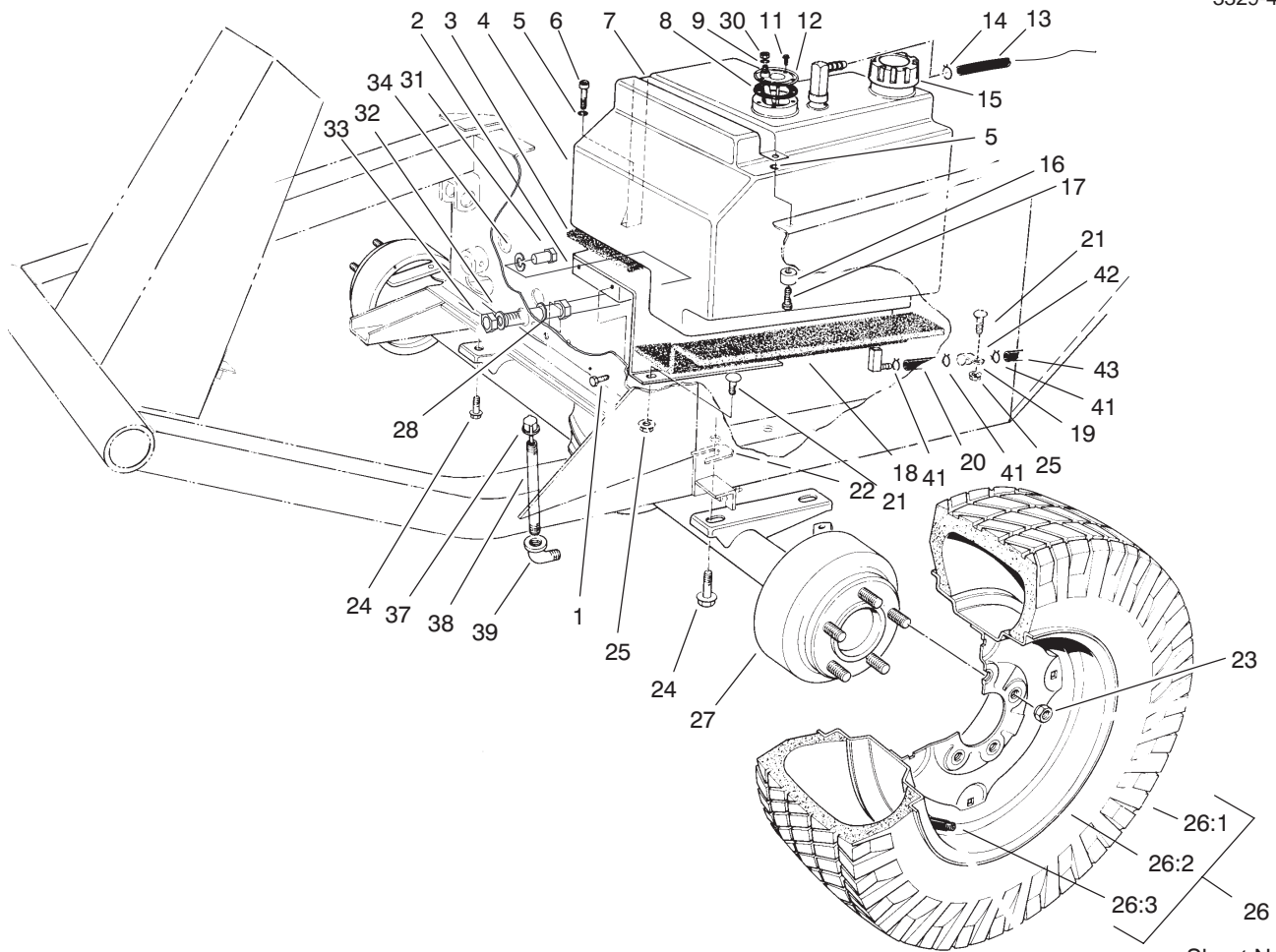


Sheet No.:15

### Push Arm Assembly (Continued)

Ref. No.	Part No.	Qty.	Description
37	68-3270	1	Bumper-Rubber
38	74-0720	1	Tube-Manual
39	322-2	2	Screw-HH
40	3256-23	2	Washer-Flat
41	2412-133	2	R-Clamp
43	324-12	2	Screw-HH

Ref. No.	Part No.	Qty.	Description
----------	----------	------	-------------

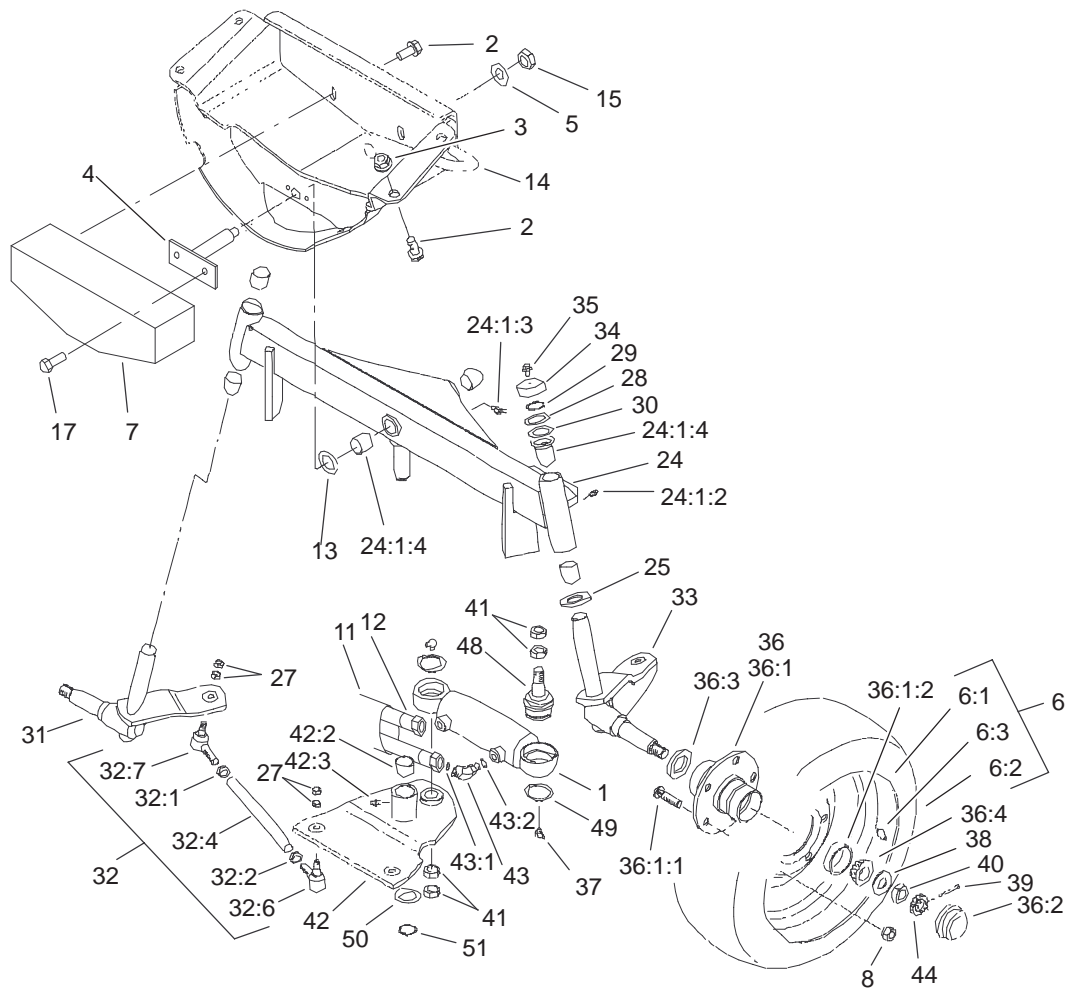


Sheet No.:17

## Fuel Tank and Front Axle Assembly

Ref. No.	Part No.	Qty.	Description	Ref. No.	Part No.	Qty.	Description
1	3234-11	2	Screw-HHF	26:2	217-117	1	Wheel ASM
2	68-9760	1	Base-Tank, Fuel	26:3	232-27	1	Stem-V alve
3	21-3600	1	Foam-Support, Tank	27	86-9600-03	1	Axle ASM
4	43-9110	1	Gas Tank ASM	28	24-9830-01	1	Support-Axle
5	3253-3	2	Washer-Lock	30	3219-14	1	Nut-Hex
6	32104-96	1	Screw-HH	31	323-6	1	Screw-HH
7	37-9550	1	Strap-Tank, Gas	32	3256-6	2	Washer-Flat
8	62-7650	1	Gasket	33	3217-9	2	Nut-HH
9	3253-17	1	Washer-Lock/Sp	34	3253-21	1	Washer-Lock
11	32144-53	5	Screw-SHWH	37	23-5180	1	Dipstick-Axle
12	105-2563	1	Sender-Fuel	38	289-37	1	Nipple-Pipe
13	63-7630	1	Hose-Fuel	39	2811-9	1	Fitting-Elbow, Street
14	2412-6	1	Clamp-Hose	41	2412-108	3	Clamp-Worm
15	55-3574	1	Gas Cap ASM	42	99-9403	1	Filter-Fuel
16	22-7810	1	Spacer	43	92-1661	1	Hose-Fuel
17	321-6	1	Screw-HH				
18	21-3610	1	Foam-Support, Tank				
19	2412-147	1	Clamp				
20	92-1662	1	Hose-Fuel				
21	3230-2	3	Bolt-CARR				
22	42-6080	1	Shim-Axle				
23	23-7270	10	Nut-Wheel				
24	32144-67	4	Screw				
25	32128-20	3	Nut-HF				
☆26		2	Tire ASM				
26:1	95-3348	1	Tire				

☆ Not serviced separately



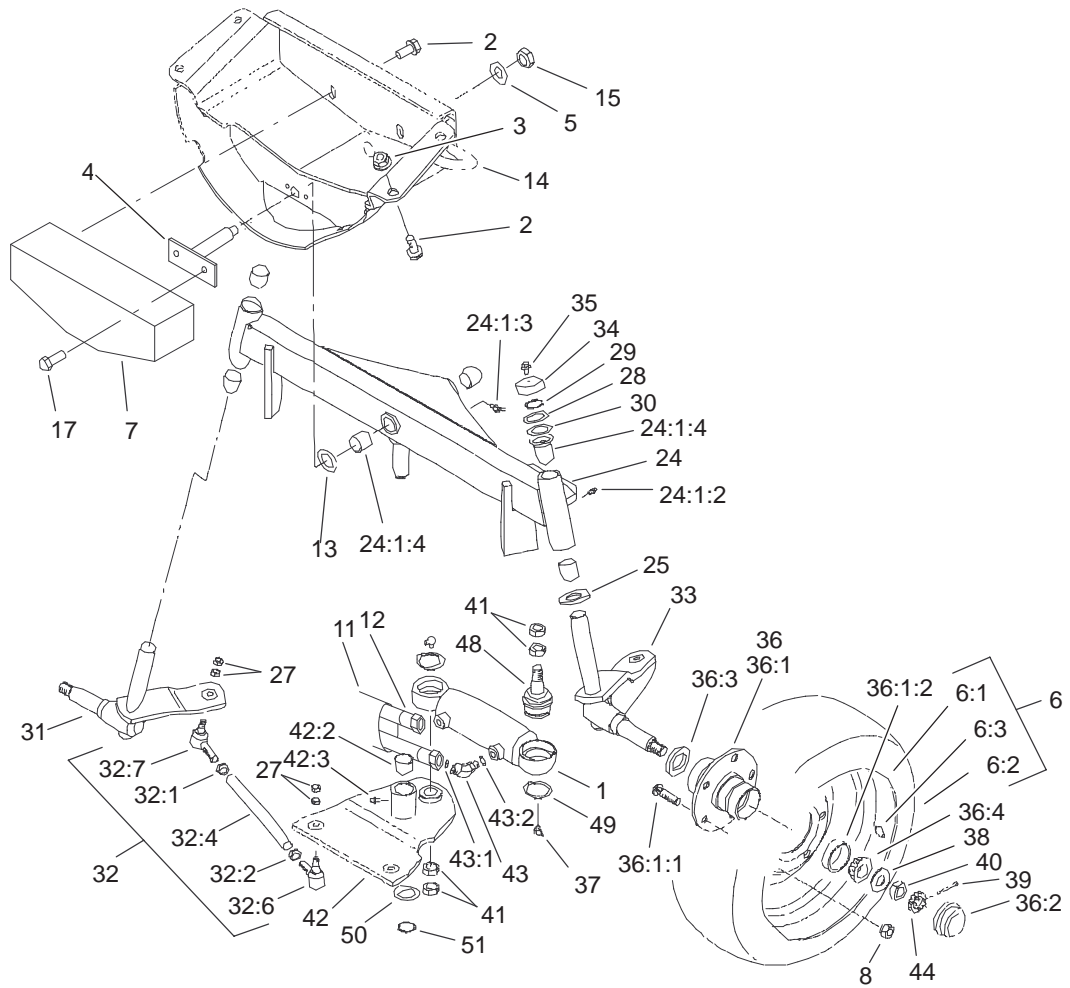
Sheet No.:18

## Rear Axle Assembly

Ref. No.	Part No.	Qty.	Description
1	92-7828	1	Cylinder-HYD
2	3234-32	6	Screw-HHF
3	32128-23	4	Nut-HF
4	92-7843-01	1	Pin-Axle
5	71-4540	1	Washer-Thrust
6	39-7970	2	Tire And Wheel ASM
6:1	217-106	1	Wheel ASM
6:2	231-105	1	Tire
6:3	232-31	1	Stem-V valve
7	98-3869-01	1	Weight-Rear
8	242-50	10	Nut-Lug
11	56-7980	1	Sleeve-Protective
12	68-9710	2	Hose-Steering, Rear
13	56-2460	1	Washer-Flat
14	92-7841-01	1	Support-Axle
15	32146-20	1	Nut-Jam
17	32144-14	2	Screw-HWH
24	106-8050-03	1	Rear Axle ASM
24:1:2	302-5	2	Fitting-Grease
24:1:3	302-1 1	1	Fitting-Lube, 45°
24:1:4	67-1750	6	Bushing
25	256-121	2	Washer-Thrust
27	3220-3	8	Nut-Jam
28	5-1226	4	Washer
29	32151-36	2	Ring-Retaining
30	10-81 10	2	Washer-Thrust

Ref. No.	Part No.	Qty.	Description
31	93-3199-03	1	RH Spindle ASM
32	21-1991	2	Tie Rod ASM
32:1	3220-12	1	Nut-HJ, LH Thread
32:2	3220-5-01	1	Nut-HJ
32:4	21-2000	1	Tie Rod-Steering
32:6	21-0151	1	LH Ball Joint ASM
32:7	21-0141-03	1	RH Ball Joint ASM
33	99-1292-03	1	LH Spindle ASM
34	66-2990	2	Cap-Spindle
35	3234-13	2	Screw-HHF
36	21-0180	2	Hub ASM
36:1	21-2820	1	Hub ASM
36:1:1	10-6830	5	Stud-Type, Drive
36:1:2	254-72	2	Bearing-Cup, Tapered
36:2	241-1 19	1	Cap-Dust
36:3	253-129	1	Seal
36:4	254-94	2	Bearing-Cone, Taper
37	302-1 1	2	Fitting-Lube, 45°
38	93-0309	2	Washer-Tab
39	3272-13	2	Pin-Cotter
40	3220-7	2	Nut-Jam
41	3220-6	4	Nut-Jam
42	106-8052	1	Steering Pivot ASM
42:2	76-2970	2	Bushing-Straight
42:3	302-5	1	Fitting-Grease
43	340-54	2	Elbow-45°



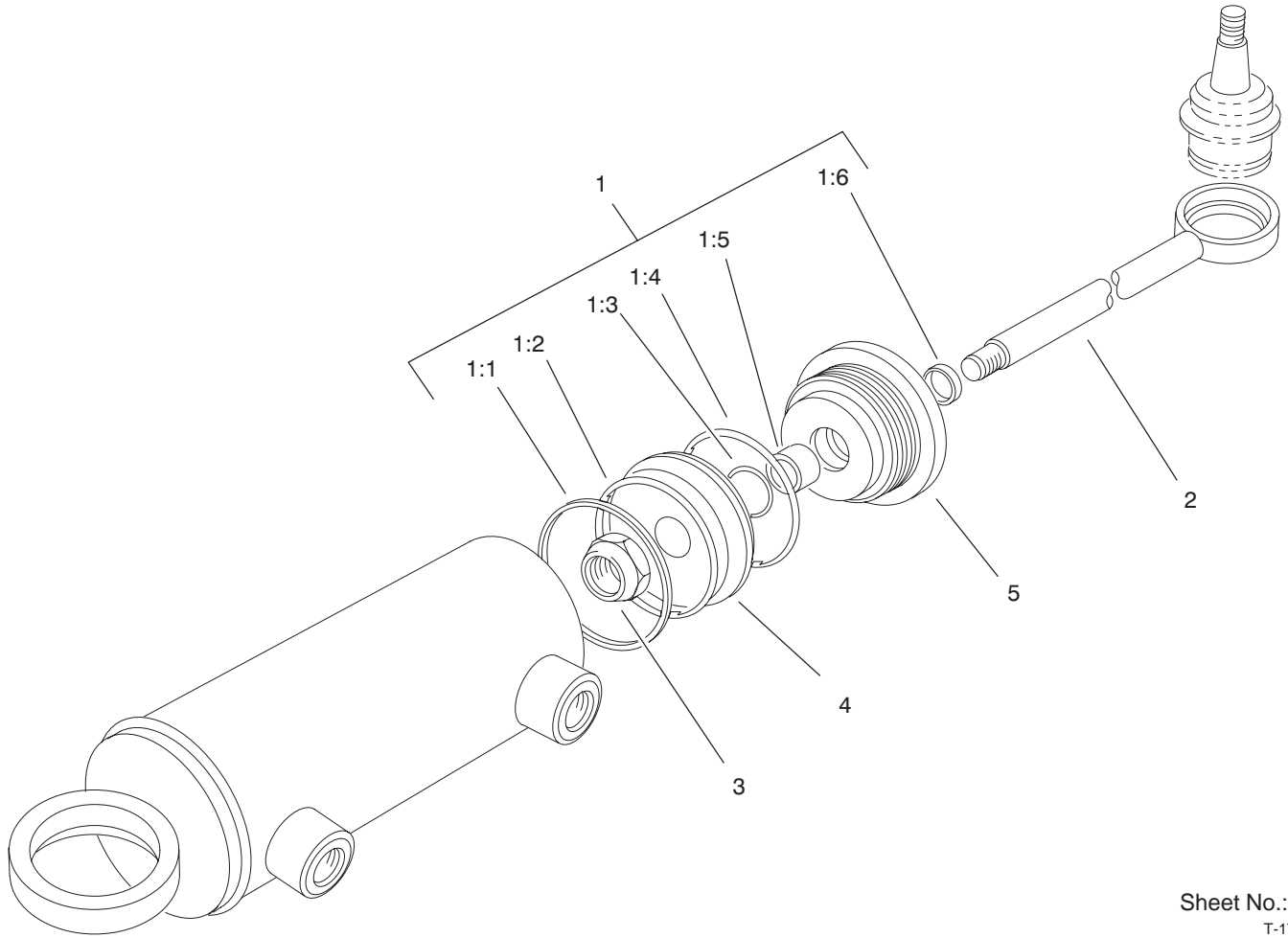


Sheet No.:18

## Rear Axle Assembly (Continued)

Ref. No.	Part No.	Qty.	Description
43:1	237-22	1	O-Ring
43:2	237-78	1	O-Ring
44	93-0307	2	Nut-Lock, Retainer
45	241-1 19	2	Cap-Dust
46	253-129	2	Seal
47	254-94	2	Bearing-Cone, Taper
48	92-5838-01	2	Joint-Ball
49	32151-104	2	Ring-Retaining, External
50	76-2980	1	Washer-Thrust
51	32151-77	1	Ring-Retaining, Ext

Ref. No.	Part No.	Qty.	Description



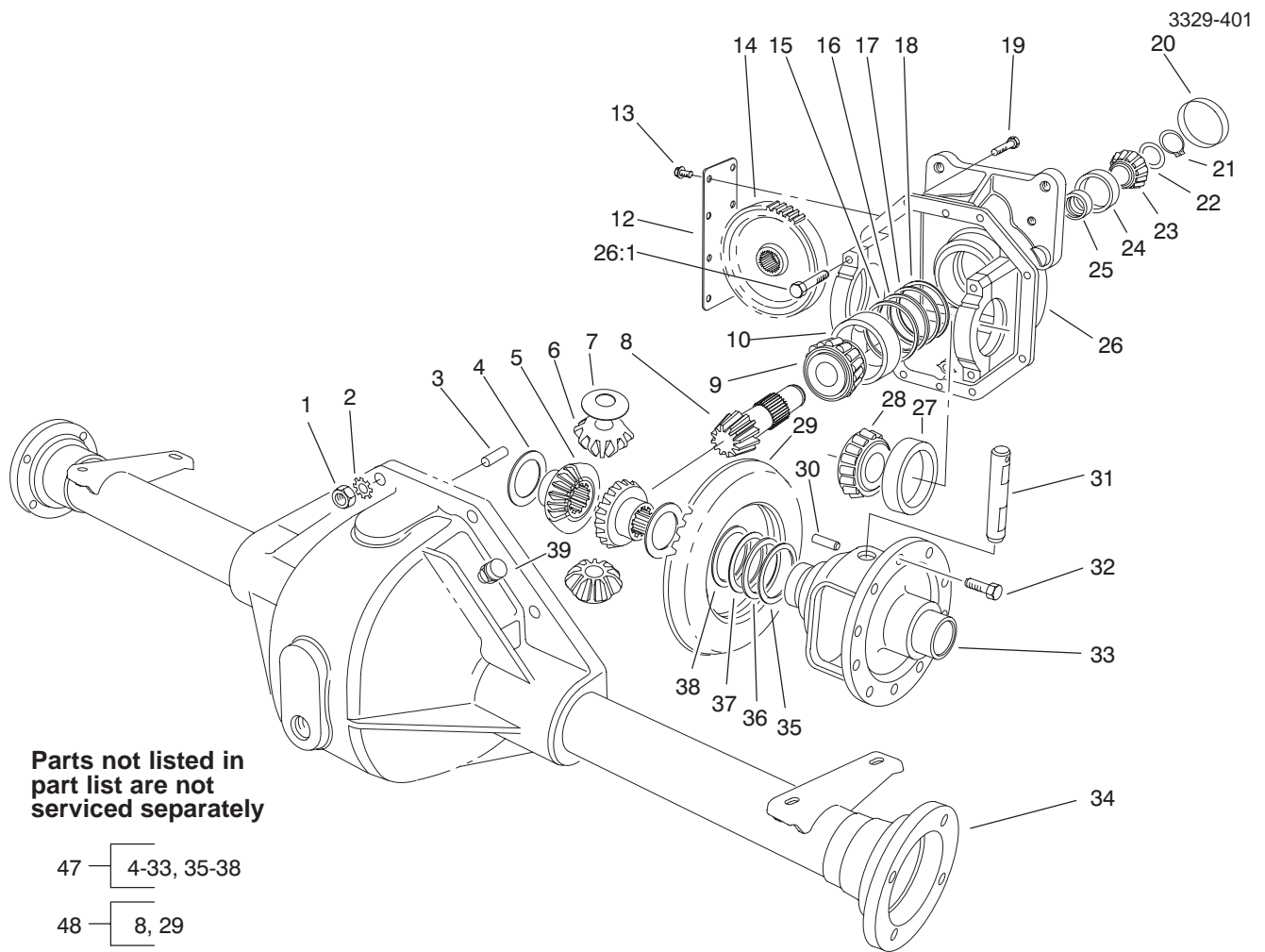
Sheet No.:B2  
T-1761

## Hydraulic Cylinder Assembly No. 92-7828

Ref. No.	Part No.	Qty.	Description
1	92-6593	1	Seal Kit
☆1:1		1	Seal
☆1:2		1	O-Ring
☆1:3		1	O-Ring
☆1:4		1	O-Ring
☆1:5		1	U-Cup
☆1:6		1	Wiper
☆2		1	Piston Rod ASM
☆3		1	Locknut
☆4		1	Piston
☆5		1	Gland

Ref. No.	Part No.	Qty.	Description

☆ Not serviced separately



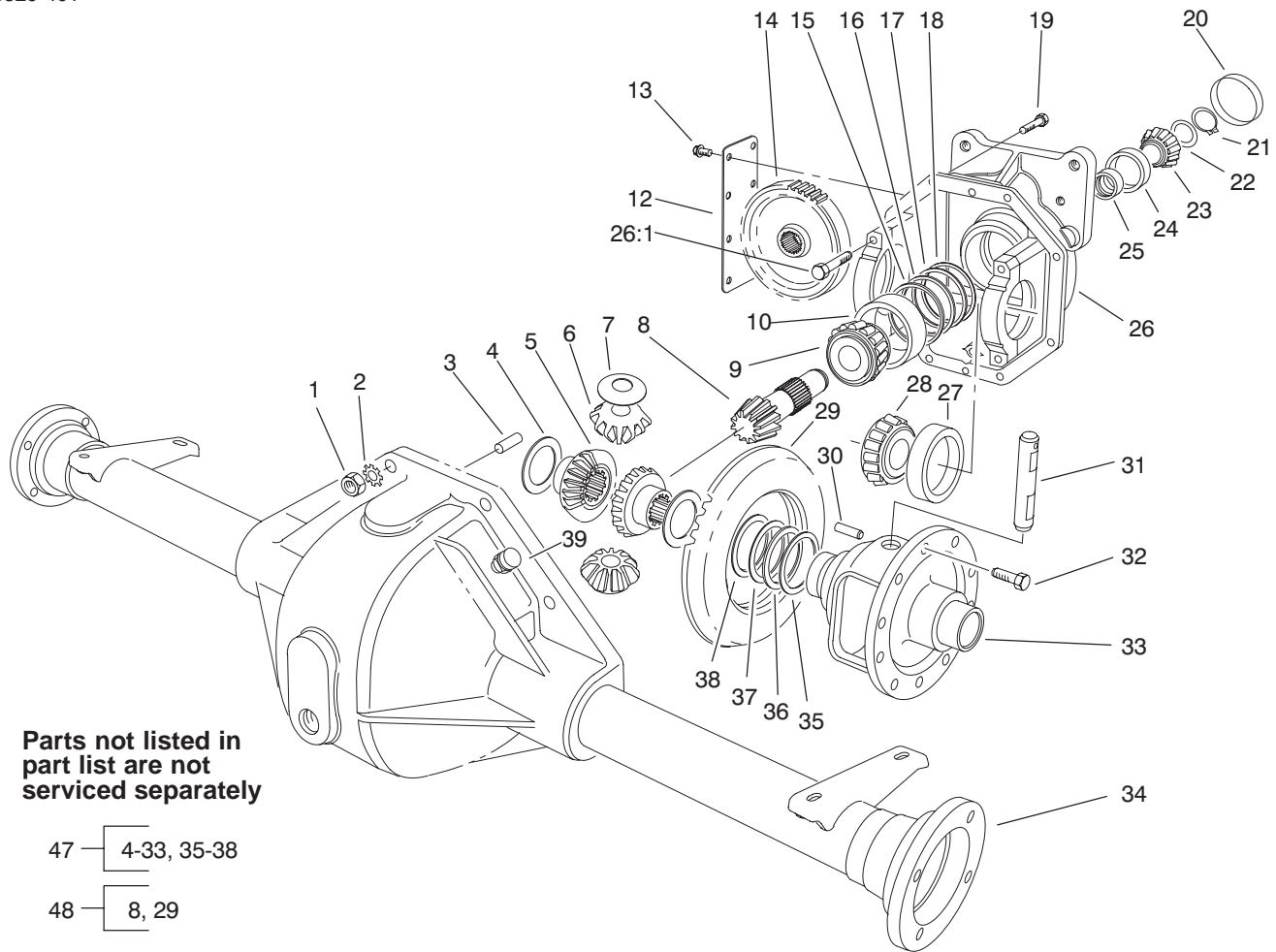
## Front Axle Assembly No. 86-9600-03

Ref. No.	Part No.	Qty.	Description
1	3219-2	8	Nut
2	3255-8	8	Washer-Lock
3	21-8270	2	Pin-Dowel
4	21-7720	2	Washer-Thrust
5	24-8790	2	Gear-Bevel, Differential Side
6	21-7690	2	Gear-Pinion
7	21-7730	2	Washer-Thrust
☆8		1	Pinion-Drive
9	43-6760	1	Cone-Bearing, Roller
10	43-6750	1	Cup-Bearing, Roller
12	21-7830	1	Cover-Gear
13	12-5450	8	Screw-TAP
14	86-7230	1	Spur-Gear
15	43-6710	AR	Adjustment Shim .003
16	43-6711	AR	Adjustment Shim .005
17	43-6712	AR	Adjustment Shim .010
18	43-6713	AR	Adjustment Shim .030
19	3210-7	8	Screw-HH
20	21-7850	1	Cup-Plug
21	43-6550	1	Ring-Snap
22	46-2210	AR	Shim-Front Pinion Bearing (.031)
*	46-2211	AR	Shim-Front Pinion Bearing (.033)
*22	46-2212	AR	Shim-Front Pinion

Ref. No.	Part No.	Qty.	Description
*	46-2213	AR	Bearing (.035)
*	46-2214	AR	Shim-Front Pinion Bearing (.037)
*	46-2215	AR	Shim-Front Pinion Bearing (.039)
*	46-2216	AR	Shim-Front Pinion Bearing (.041)
*	46-2220	AR	Shim-Front Pinion Bearing (.043)
*	46-2221	AR	Shim-Front Pinion Bearing (.045)
*	46-2222	AR	Shim-Front Pinion Bearing (.047)
*	46-2223	AR	Shim-Front Pinion Bearing (.049)
*	46-2224	AR	Shim-Front Pinion Bearing (.051)
*	46-2225	AR	Shim-Front Pinion Bearing (.053)
*	46-2226	AR	Shim-Front Pinion Bearing (.055)
*	46-2410	AR	Shim-Front Pinion Bearing (.057)
			Bearing (.062)

\*Not Illustrated

☆ Not serviced separately



Parts not listed in part list are not serviced separately

47 — 4-33, 35-38

48 — 8, 29

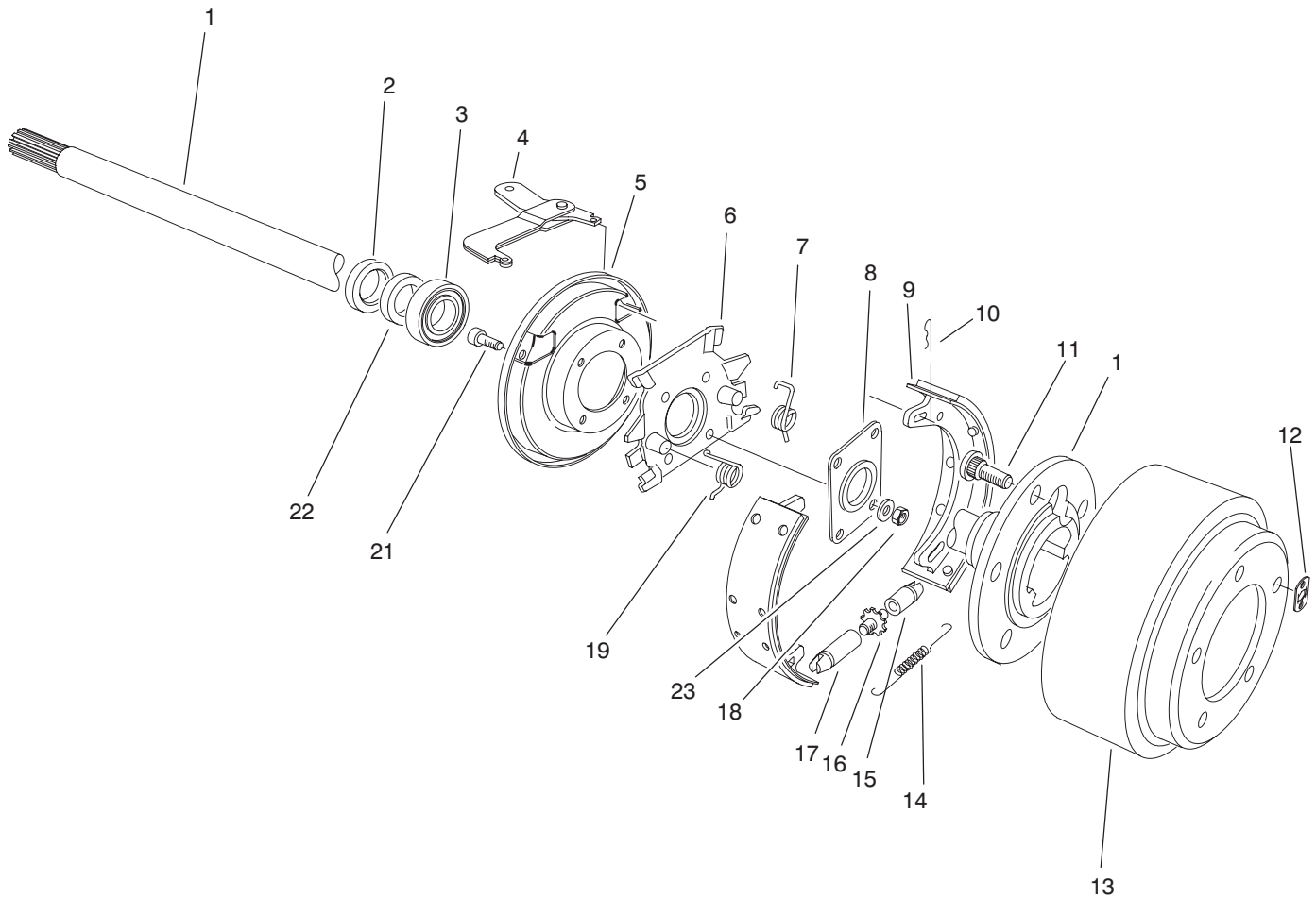
### Front Axle Assembly No. 86-9600-03 (Continued)

Ref. No.	Part No.	Qty.	Description
*22	46-241 1	AR	Shim-Front Pinion Bearing (.064)
*	46-2412	AR	Shim-Front Pinion Bearing (.066)
*	46-2413	AR	Shim-Front Pinion Bearing (.068)
*	46-2414	AR	Shim-Front Pinion Bearing (.070)
*	46-2415	AR	Shim-Front Pinion Bearing (.072)
*	46-2416	AR	Shim-Front Pinion Bearing (.074)
*	46-2420	AR	Shim-Front Pinion Bearing (.076)
*	46-2421	AR	Shim-Front Pinion Bearing (.078)
*	46-2422	AR	Shim-Front Pinion Bearing (.080)
*	46-2423	AR	Shim-Front Pinion Bearing (.082)
*	46-2424	AR	Shim-Front Pinion Bearing (.084)
*22	46-2425	AR	Shim-Front Pinion Bearing (.086)
*	46-2426	AR	Shim-Front Pinion Bearing (.088)

Ref. No.	Part No.	Qty.	Description
23	254-91	1	Cone-Bearing
24	254-90	1	Cup-Bearing
25	21-8020	1	Spacer-Pinion Bearing
26	86-9580	1	Upper Housing ASM
26:1	92-1773	4	Screw-HH
27	254-66	2	Cup-Bearing, Tapered
28	254-65	2	Cone-Bearing, Tapered
☆29		1	Gear-Ring
30	32121-15	1	Pin-Roll
31	21-7700	1	Shaft-Pinion Mate
32	21-7770	5	Screw-Drive Gear
33	21-7670	1	Differential Case ASM
34	43-6840	1	Lower Housing ASM
35	21-8120	AR	Adjustment Shim .030
36	21-81 10	AR	Adjustment Shim .010
37	21-8100	AR	Adjustment Shim .005
38	21-8090	AR	Adjustment Shim .003
39	72-9420	1	Vent Tube ASM
47	92-4903	1	Upper Housing ASM
48	92-4848	1	Gear and Pinion ASM

\*Not Illustrated

☆ Not serviced separately



T-0421

## Brake Assembly

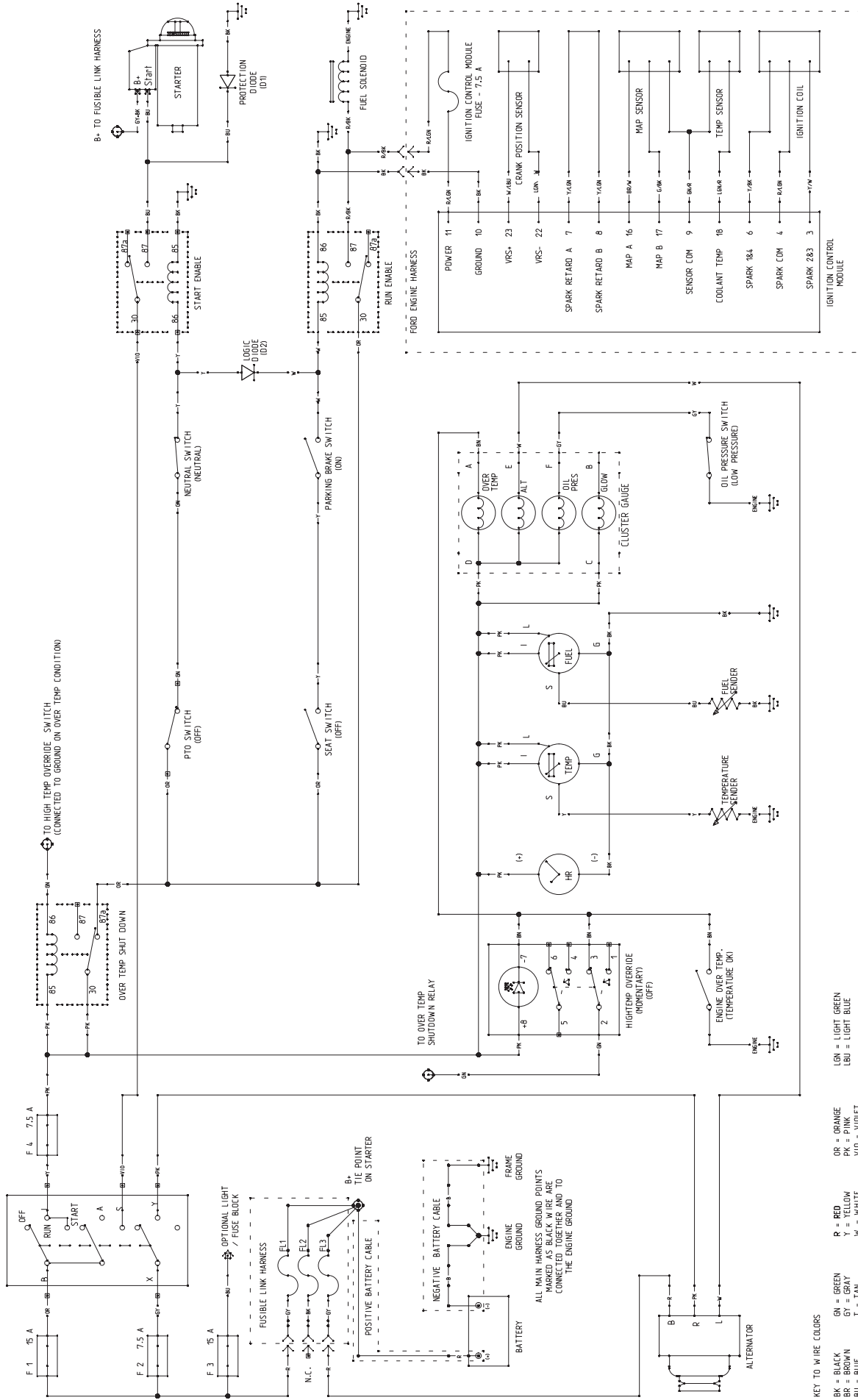
Ref. No.	Part No.	Qty.	Description
1	28-0650	2	Shaft-Axle, Flanged
2	92-1774	2	Seal-Oil
3	21-8180	2	Bearing
4	24-9180	2	Brake-Parking, Strut & Lever
5	21-9450	2	Shield-Dust
6	43-6810	2	Torque-Spider
7	21-9430	2	Spring-Shoe Return, RH
8	28-0670	2	Seal-Oil
9	84-8600	1	Shoe & Lining ASM (Set of 4)
10	21-9460	4	Retainer-Lever, Brake
11	242-34	10	Stud-Flange, Axle
12	21-8360	2	Clip-Retaining
13	28-0680	2	Drum-Brake
14	21-9440	2	Spring-Screw, Adj.
15	21-9390	2	Socket-Screw, Adj.
16	21-9370	2	Screw-Adj.
17	21-9380	2	Nut-Pivot
18	94-6935	8	Nut-Lock
19	21-9420	2	Spring-Shoe Return, LH
21	94-6934	8	Screw-Head, Socket
22	24-8840	2	Ring-Bearing, Wheel

Ref. No.	Part No.	Qty.	Description
23	94-6936	8	Washer
*	92-8775	2	Kit-Gasket, Liquid

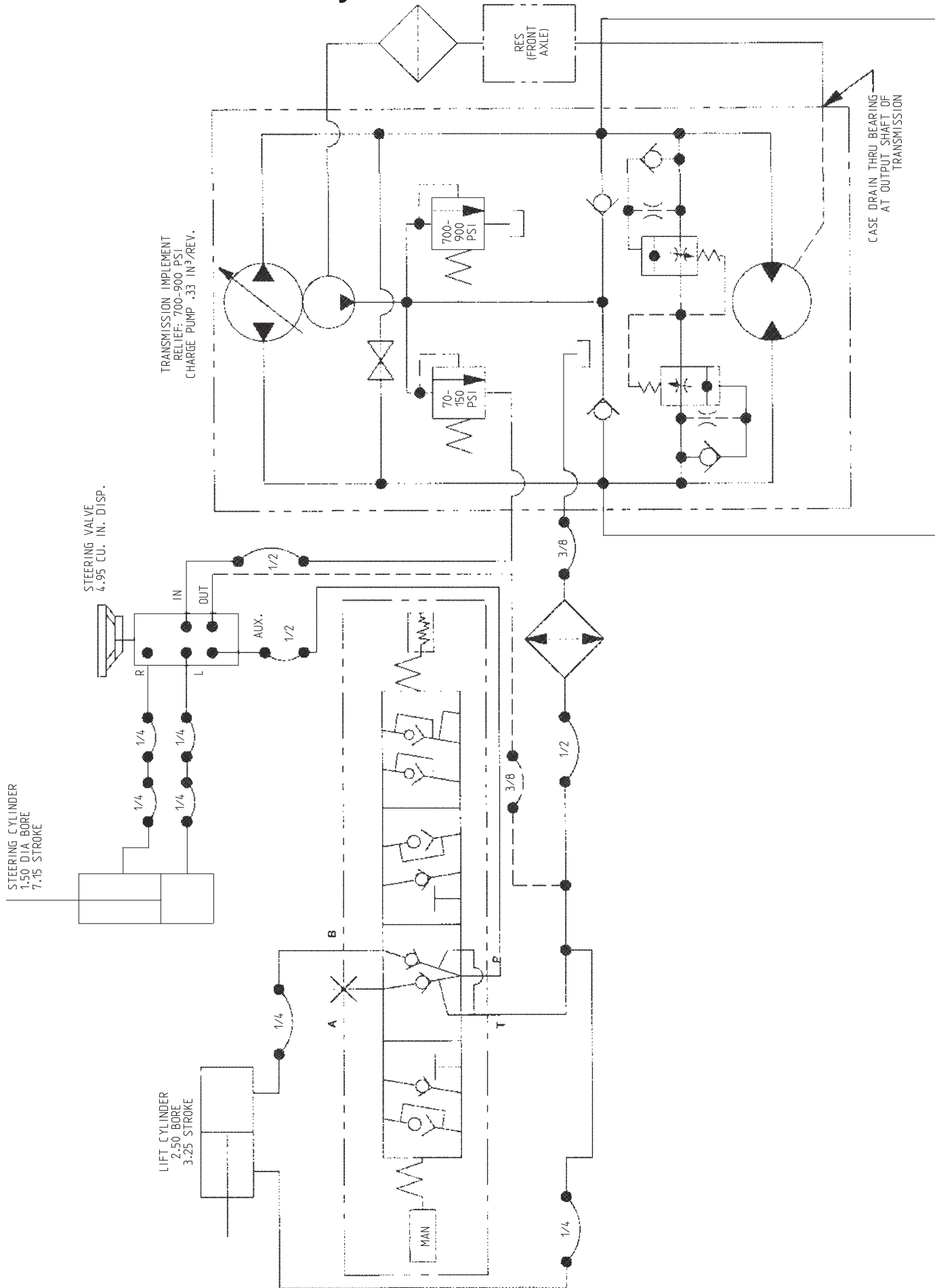
\* Not illustrated

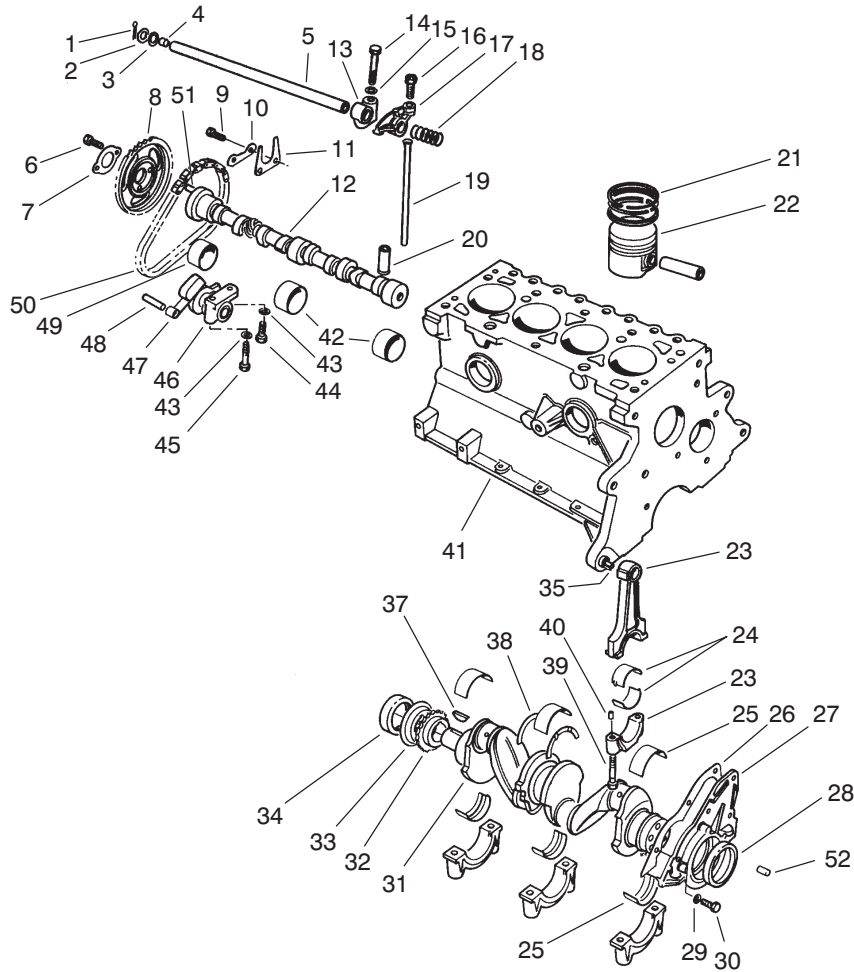
# Electrical Schematic

## MAIN HARNESS



# Hydraulic Schematic





T-1004

## Crankshaft and Camshaft Assembly

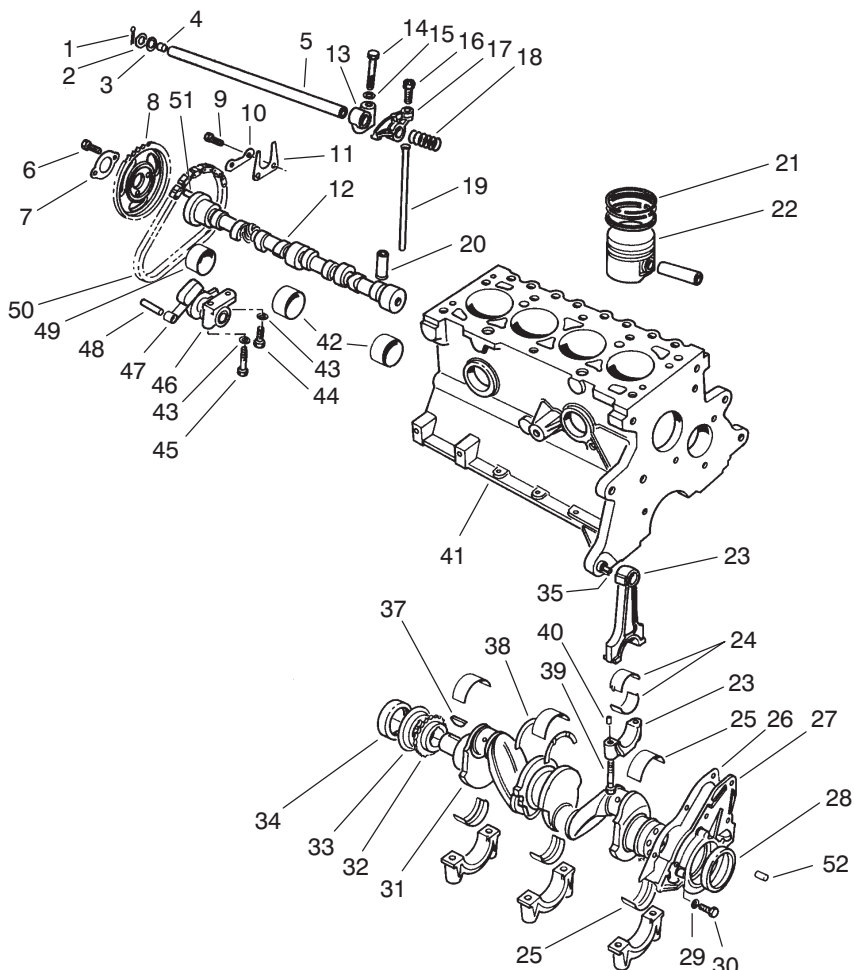
Ref. No.	Part No.	Qty.	Description
1	72025-S7	2	Pin-Cotter
2	77BM-6598-AB	2	Washer-Spring
3	DORY-6590-A	2	Washer-Flat
4	357966-S	2	Plug-Shaft, Rocker Arm
5	89BM-6A557-AA	1	Rocker Arm Shaft ASM (Incl. Ref. #4)
6	E602351-S72	2	Bolt
7	DORY-6258-A	1	Retainer
8	77BM-6256-AA	1	Sprocket-Camshaft
9	N602166-S2	2	Bolt
10	DORY-6255-A	1	Retainer
11	DORY-6269-A	1	Plate-Thrust
12	89BM-6251-AA	1	Camshaft
13	77BM-6531-BB	4	Support-Shaft, Rocker
14	E800509-S72	4	Bolt-Support, Rocker
15	E630031-S101	4	Washer
16	DORY-6549-B	8	Screw
17	89BM-6529-AB	4	Arm-V alve Rocker, RH (Incl. Ref. #16)
*	89BM-6K528-AB	4	Arm-V alve Rocker, LH (Incl. Ref. #16)
18	DORY-6587-A	3	Spring-Locating
19	89BM-6565-AA	8	Rod-Push, Valve
20	89BM-6500-AA	8	Tappet-STD

Ref. No.	Part No.	Qty.	Description
21	89BM-6148-DA	4	Set-Ring, STD.
*	89BM-6148-EA	A/R	Set-Ring, .020 OS.
*	89BM-6148-F A	A/R	Set-Ring, .040 OS.
22	89BM-6102-DA	4	STD Piston ASM (Incl. Ref. #21)
*	89BM-6102-EA	A/R	.020 OS. Piston ASM (Incl. Ref. #21)
*	89BM-6102-F A	A/R	.040 OS. Piston ASM (Incl. Ref. #21)
23	89BM-6200-AD	4	Connecting Rod ASM
24	89BM-6211-AA	8	Bearing-Rod, STD.
*	89BM-6211-BA	A/R	Bearing-Rod, .001 U.S.
*	89BM-6211-CA	A/R	Bearing-Rod, .010 U.S.
*	89BM-6211-DA	A/R	Bearing-Rod, .020 U.S.
*	89BM-6211-EA	A/R	Bearing-Rod, .030 U.S.
25	89BM-6333-AA	5	Bearing-Crank, Upper (STD. OD STD. ID)
*	89BM-6331-AA	5	Bearing-Crank, Lower (STD. OD STD. ID)

\*Not Illustrated

Note: Order parts from your local Ford Power Products Dealer.





T-1004

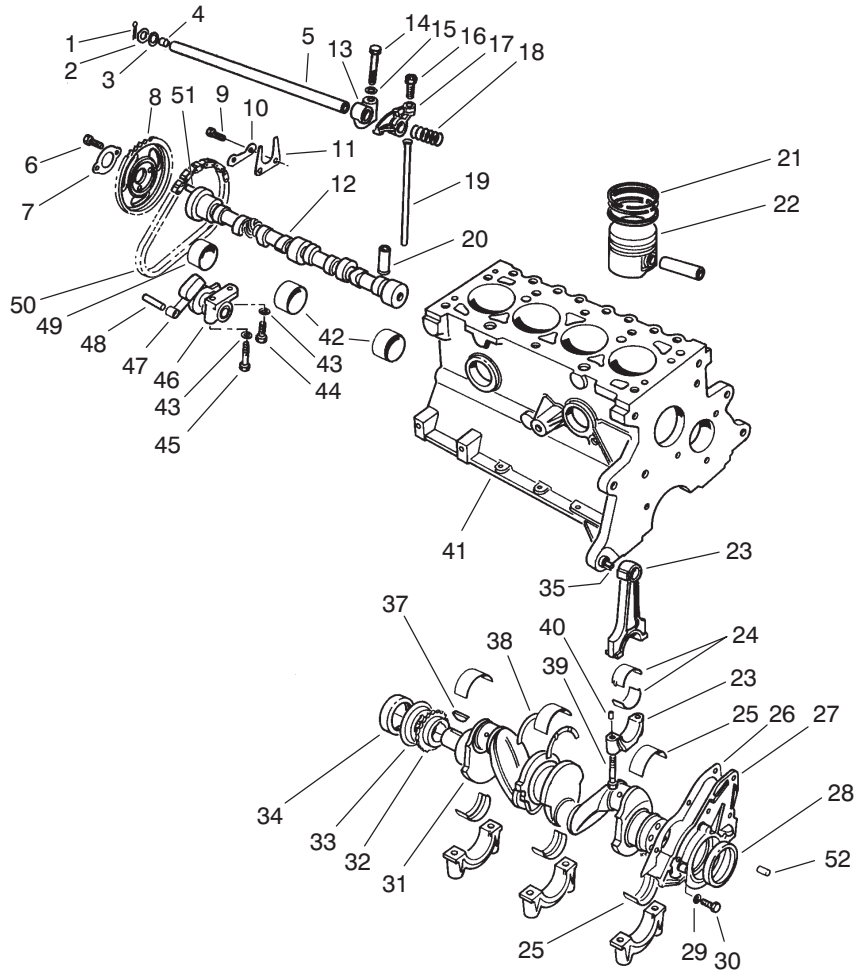
## Crankshaft and Camshaft Assembly (Continued)

Ref. No.	Part No.	Qty.	Description
*	89BM-6333-BA	A/R	Bearing-Crank, Upper (STD. OD .005 US. ID)
*	89BM-6331-BA	A/R	Bearing-Crank, Lower (STD. OD .005 US. ID)
*	89BM-6333-CA	A/R	Bearing-Crank, Upper (STD. OD .010 US. ID)
*25	89BM-6333-DA	A/R	Bearing-Crank, Upper (015 OD STD. ID)
*	89BM-6331-DA	A/R	Bearing-Crank, Lower (015 OD STD. ID)
*	89BM-6333-EA	A/R	Bearing-Crank, Upper (STD. OD .020 US. ID)
*	89BM-6331-EA	A/R	Bearing-Crank, Lower (STD. OD .020 US. ID)
*	89BM-6333-F A	A/R	Bearing-Crank, Upper (STD. OD .030 US. ID)
*	89BM-6331-F A	A/R	Bearing-Crank, Lower (STD. OD .030 US. ID)
*	89BM-6333-GA	A/R	Bearing-Crank, Upper (.015 OS. OD .010 US. ID)
*	89BM-6331-GA	A/R	Bearing-Crank, Lower (.015 OS. OD .010 US. ID)

Ref. No.	Part No.	Qty.	Description
*	89BM-6333-HA	A/R	Bearing-Crank, Upper (.015 OS. OD .020 U.S. ID)
*	89BM-6331-HA	A/R	Bearing-Crank, Lower (.015 OS. OD .020 U.S. ID)
26	89BM-6344-BA	1	Gasket-Retainer , Rear
27	86BM-6K318-AA	1	Rear Retainer ASM
28	86HM-6701-A1A	1	Seal-Crankshaft, Rear
29	E630173-S71M	4	Lockwasher
30	E602187-S72	4	Bolt
31	89BM-6303-DA	1	Crankshaft ASM
32	DORY-6306-A	1	Sprocket
33	D8RZ-6310-A	1	Slinger-Oil
34	83BM-6700-A4A	1	Seal-Cover , Front
35	70HM-6397-AA	2	Dowel
37	D0RY-6B316-A	1	Key-W oodruff
38	89BM-6A341-AA	2	Washer-Thrust Bearing, STD.
*	89BM-6A341-BA	A/R	Washer-Thrust Bearing, .015 OS.
39	89BM-6214-DB	8	Bolt-Rod, Connecting
40	116336-ES100	8	Pin-Dowe, Rod
41	89BM-6011-DA	1	Block-Cylinder
42	DORY-6261-A	2	Bearing (STD. ID STD. OD)

\*Not Illustrated

Note: Order parts from your local Ford Power Products Dealer.



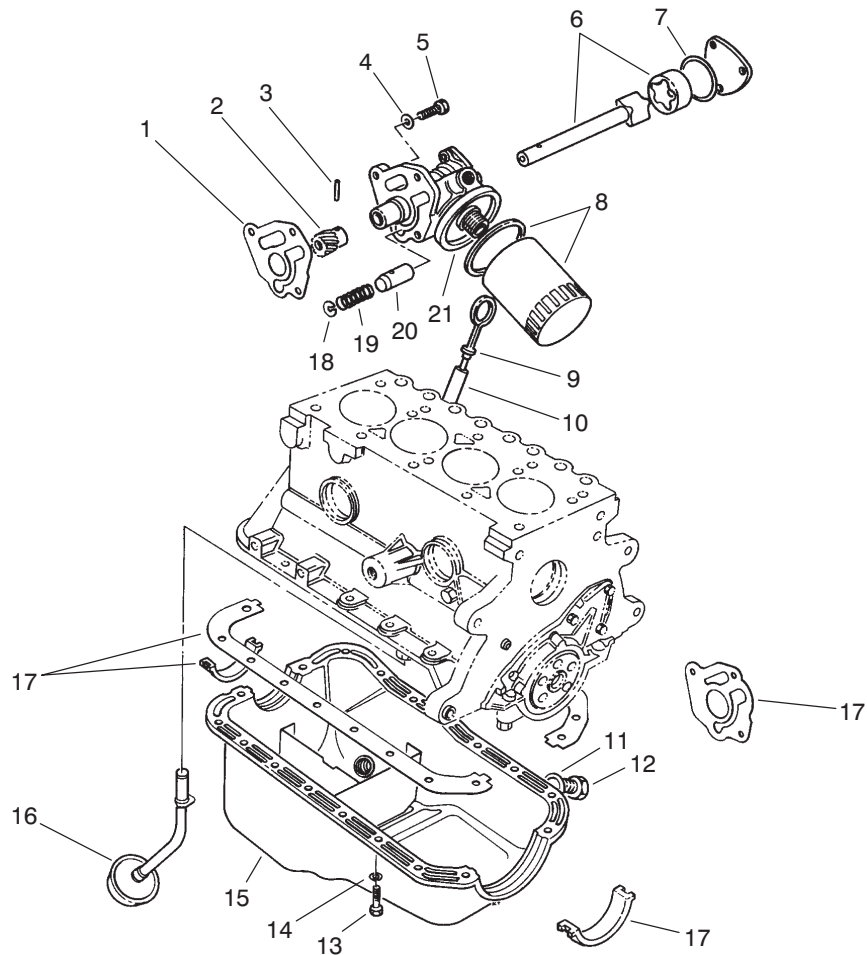
T-1004

## Crankshaft and Camshaft Assembly (Continued)

Ref. No.	Part No.	Qty.	Description
	* DORY-6262-B	A/R	Bearing (STD. ID +.020 OD)
43	34805-S8	2	Lockwasher
44	E602166-S72	1	Bolt
45	E600116-S72	1	Bolt
46	DIFZ-6284-A	1	Tensioner
47	77BM-6K255-AC	1	Arm-T ensioner
48	E43-CP-1	1	Pin
49	DORY-6261-A	1	Bearing (STD. ID STD. OD)
	* DORY-6261-B	A/R	Bearing (STD. ID +.020 OD)
50	DORY-6268-A	1	Chain
51	E93A-6253-A	1	Dowel
52	E-840161-S	1	Dowel
	* 93BX-6014-AA	1	Kit-Gasket, Upper (Less Head Gasket)
	* 89BM-6051-C2B	1	Gasket-Head
	* 93BX-6013-BA	1	Kit-Gasket, Lower

\*Not Illustrated

Note: Order parts from your local Ford Power Products Dealer.

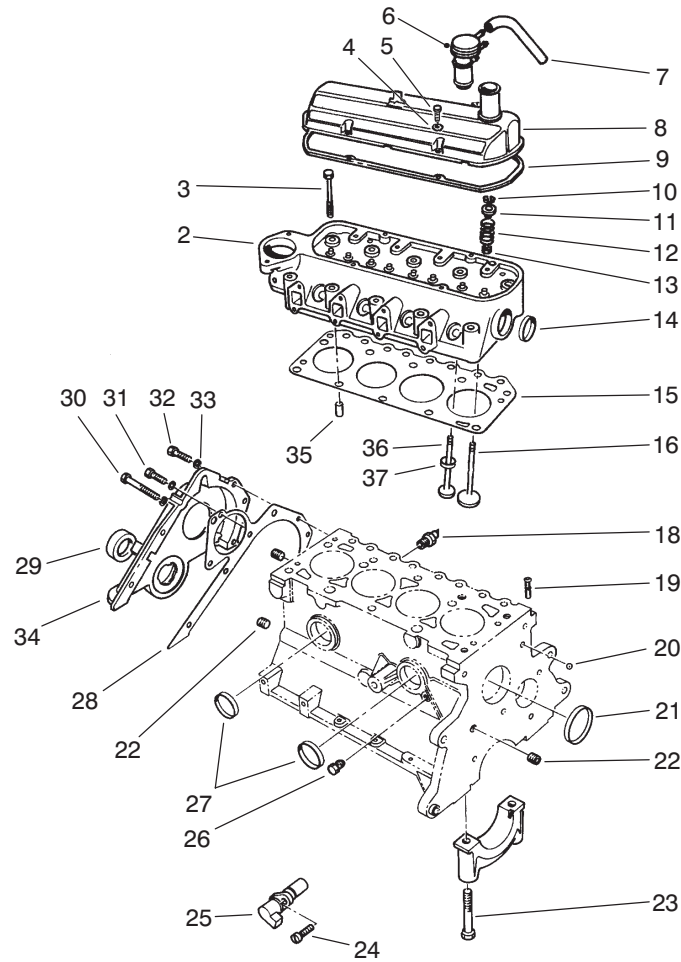


T-1003

## Oil Pump and Filter Assembly

Ref. No.	Part No.	Qty.	Description	Ref. No.	Part No.	Qty.	Description
1	96BM-6659-A1A	1	Gasket-Pump, Oil				
2	DORY-6652-A	1	Gear				
3	72432-S	1	Pin-Gear , Drive				
4	E630173-S71M	3	Lockwasher				
5	E800519-S72	3	Bolt				
6	DIFZ-6608-B	1	Rotor & Shaft				
7	116682-ES	1	Plate-Cover , Seal				
8	95-3304	1	Filter-Oil				
9	92BM-6750-AA	1	Indicator-Level, Oil				
10	89BM-6784-AA	1	Tube-Indicator , Oil Level				
11	E9DZ-6734-B	1	Gasket-Drain Plug, Oil				
12	E9DZ-6730-B	1	Plug-Drain, Oil				
13	E602165-S72	18	Bolt				
14	34805-S8	18	Lockwasher				
15	86BM-6675-AA	1	Pan-Oil				
16	86BM-6617-AA	1	Oil Pickup Tube ASM				
17	A850X-6013-A2A	1	Kit-Seal, Gasket				
18	DORY-6666-A	1	Plug				
19	DORY-6670-A	1	Spring				
20	DORY-6674-A	1	Plunger				
21	D8RZ-6600-A	1	Pump-Oil				

Note: Order parts from your local Ford Power Products Dealer.



T-1002

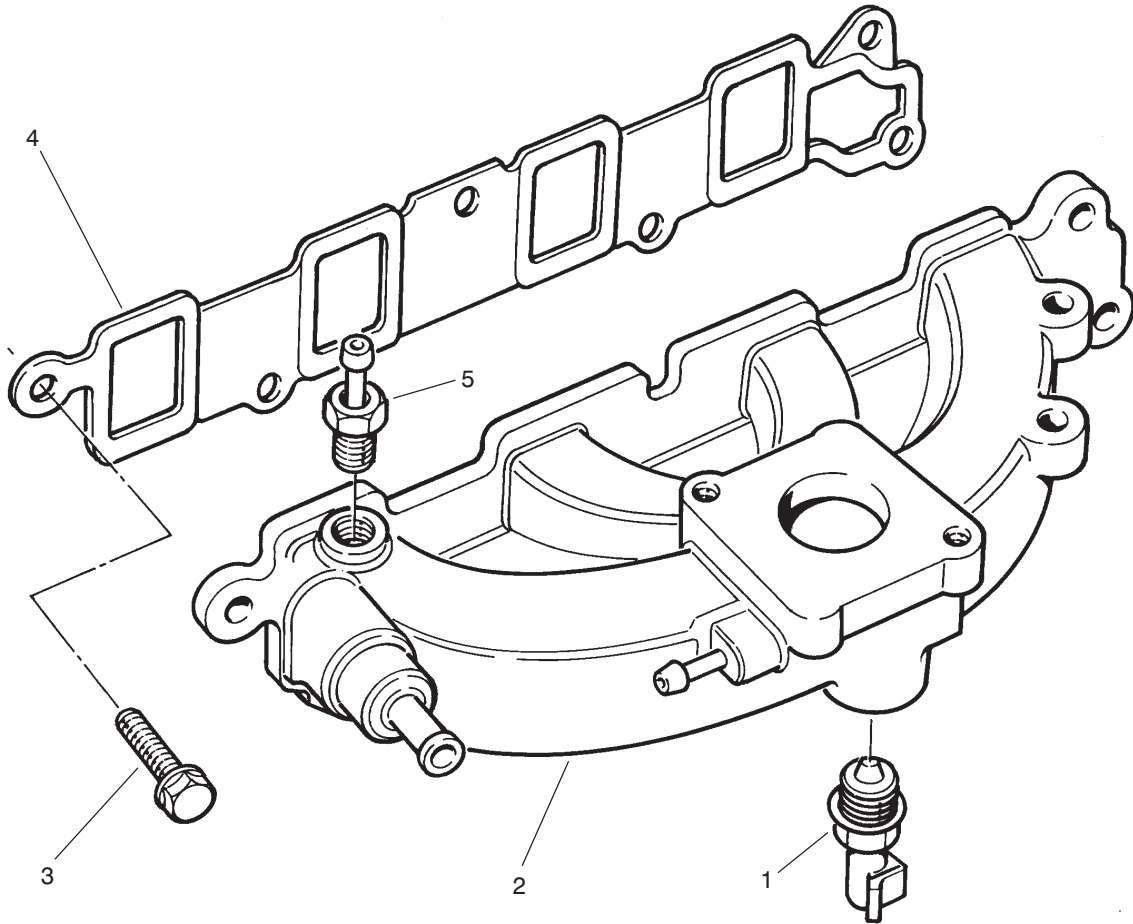
## Cylinder Head and Valve Assembly

Ref. No.	Part No.	Qty.	Description
2	89BM-6049-DD	1	Cylinder Head ASM
3	89BM-6065-DA	10	Bolt-Head, Cylinder
4	E630024-S201	4	Washer-Flat
5	E800516-S72	4	Screw-Cover , Rocker
6	84BF-6K614-CA	1	Cap-Fill, Oil
7	E9JL-6K609-AA	1	Hose-PCV
8	91BM-6582-GA	1	Cover-Arm, Rocker
9	77BM-6584-CA	1	Gasket-Cover
10	88WM-6518-AA	16	Spring-V alve, Lock
11	89BM-6A536-AA	8	Retainer
12	89BM-6513-AA	8	Spring-V alve
13	88WM-6571-BB	8	Seal-Stem, Valve
14	DORY-6026-A	1	Plug
15	89BM-6051-C2B	1	Gasket-Head, Cylinder
16	89BM-6507-BA	4	Valve-Intake (Std.)
*	89BM-6507-BC	A/R	Valve-Intake (.040mm O.S.)
18	E7RZ-9278-A	1	Switch-Pressure, Oil
19	D8RZ-6767-A	1	Adapter
20	E890100-S	1	Plug-Ball, Oil Gallery
21	DORY-6026-A	1	Plug
22	F1ZZ-6026-A	3	Plug
23	D1FZ-6345-A	10	Bolt-Cap, Bearing
24	E802666-S72	1	Screw
25	89BF-6C315-AB	1	Transducer

Ref. No.	Part No.	Qty.	Description
26	353055-S7	1	Plug
27	DORY-6026-A	2	Plug
28	D8RZ-6020-A	1	Gasket-Cover , Front
29	83BM-6700-A4A	1	Seal-Cover , Front
30	E800518-S72	1	Bolt
31	E600113-S72	3	Bolt
32	E800512-S72	4	Bolt
33	E832108-S71M	8	Lockwasher
34	95BM-6019-AC	1	Cover & Seal ASM (Incl. Ref. #29)
35	E840126S	2	Dowel
36	89BM-6505-EA	A/R	Valve-Exhaust (.040mm O.S.)
*	89BM-6505-CA	4	Valve-Exhaust (Std.)
37	89BM-6057-A2E	4	Insert-Seat, Exhaust

\*Not Illustrated

Note: Order parts from your local Ford Power Products Dealer.

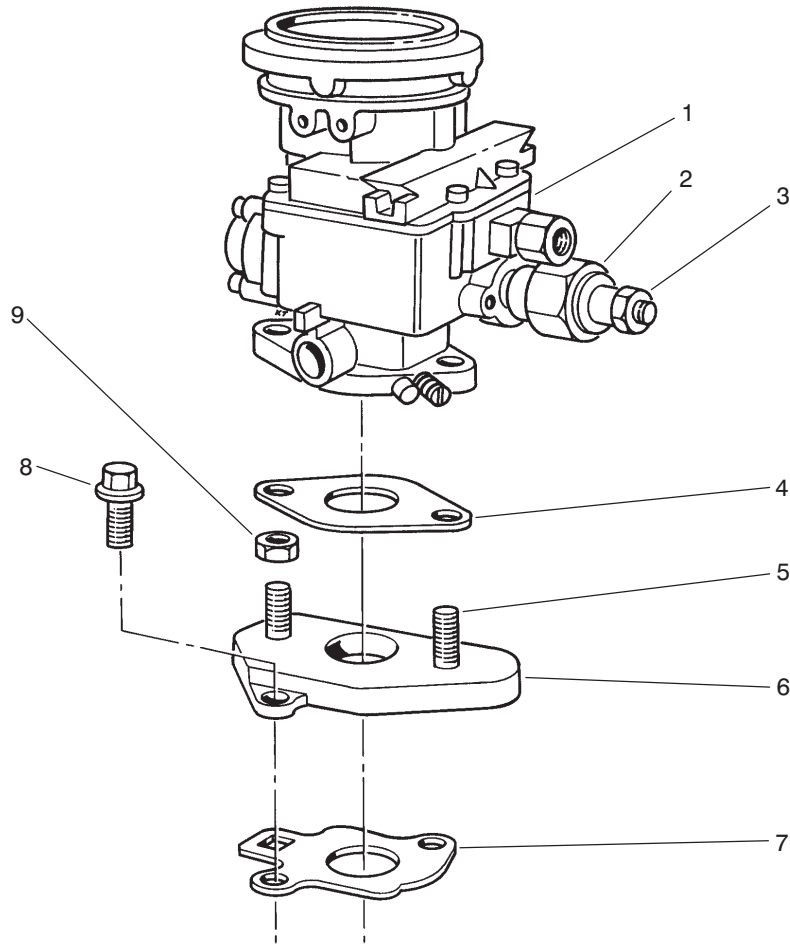


T-1176

## Manifold Assembly

Ref. No.	Part No.	Qty.	Description
1	E1AZ-12A648-A	1	Sensor-T emperature, Water
2	89BF-9424-AD	1	Manifold-Intake
3	E800157-S72	6	Bolt
4	89BM-9441-AB	1	Gasket-Manifold, Intake
5	77BF-9K442-AA	1	Adapter-V acuum

Ref. No.	Part No.	Qty.	Description



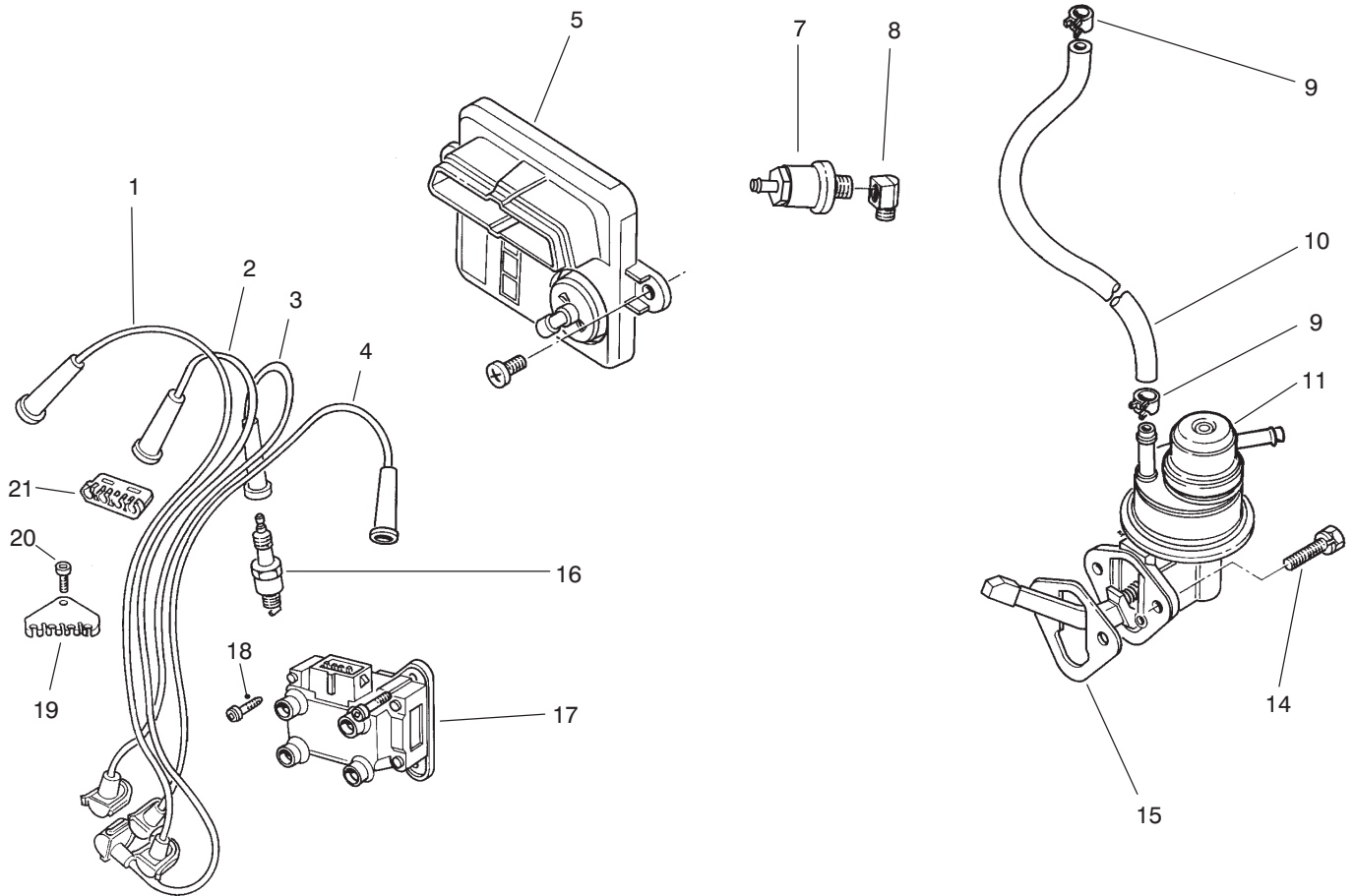
T-0999

## Carburetor Assembly

Ref. No.	Part No.	Qty.	Description
1	F8JL-9510LA	1	Carburetor ASM
2	84FB-9K765-BA	1	Solenoid
3	N621903-S2	1	Nut & Washer
4	E5JL-9447-BA	1	Gasket
5	E804216S	2	Stud
6	E8JL-9A589-CB	1	Adapter
7	87BF-9447-BA	1	Gasket
8	N800055-S	2	Bolt
9	N620041-S51	2	Nut

Ref. No.	Part No.	Qty.	Description

Note: Order parts from your local Ford Power Products Dealer.



T-1233

## Ignition and Fuel Pump Assembly

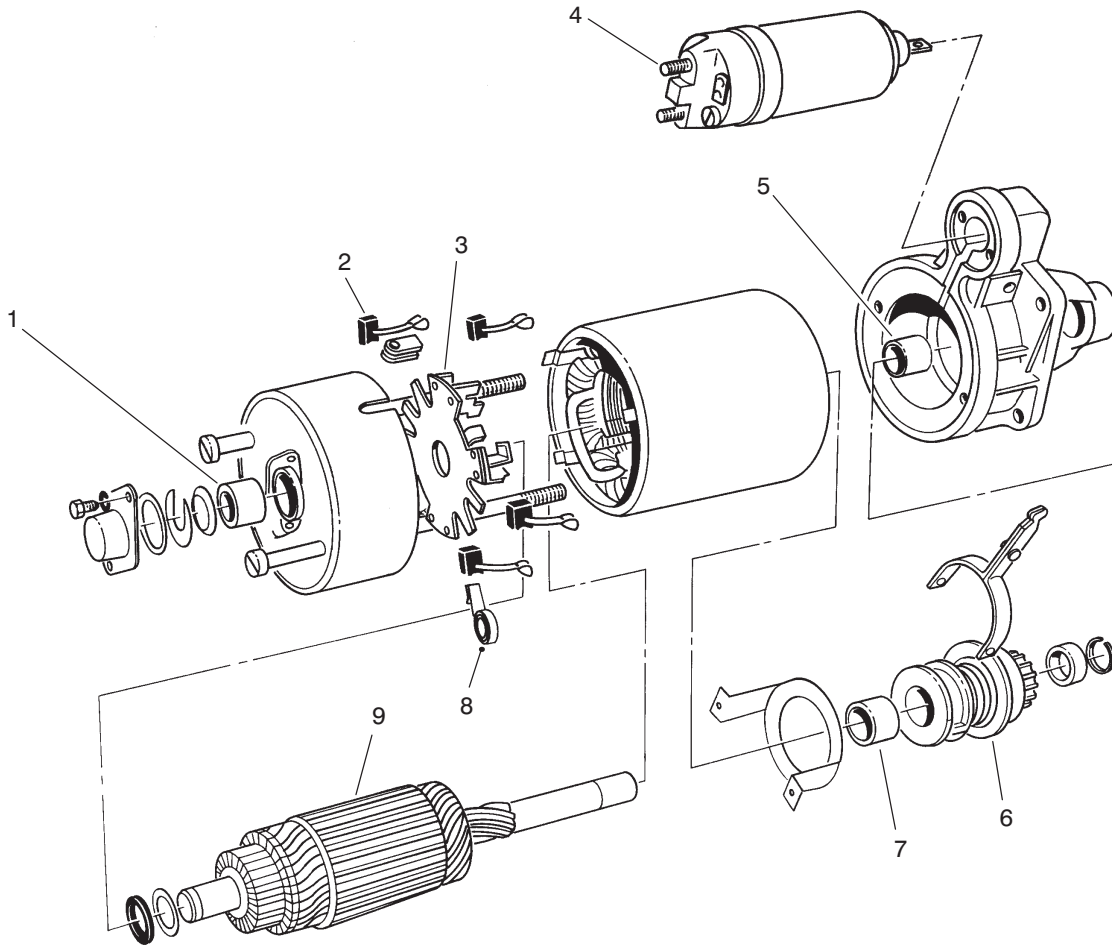
Ref. No.	Part No.	Qty.	Description
1	89BF-12287-AC	1	Wire-Spark Plug, #4
2	89BF-12284-AD	1	Wire-Spark Plug, #3
3	89BF-12283-AD	1	Wire-Spark Plug, #2
4	88BF-12286-AD	1	Wire-Spark Plug, #1
5	89FB-12A297-GA	1	Module-Ignition
†7	FG778-B	1	Filter-Fuel (Motorcraft)
8	370829-S101	1	Elbow
9	380882-S32	A/R	Clamp-Hose, Fuel
10	381103-S180A	1	Hose-Fuel
11	83BF-9350-AA	1	Pump-Fuel
14	N602551-S2	2	Screw & Washer
15	83BM-9417-A1A	1	Gasket-Pump, Fuel
16	AGRF22	1	Plug-Spark
*	AGSF22C	4	Plug-Spark (Motorcraft)
17	96BF-12024-A1A	1	Coil & Bracket ASM
18	E804335-S201	3	Screw
19	89BF-12297-AA	1	Separator-Wire
20	E802166-S76	1	Screw
21	E865648-S	1	Separator-Wire

Ref. No.	Part No.	Qty.	Description

\*Not Illustrated

†For use on Serial No. 40501 & UP

Note: Order parts from your local Ford Power Products Dealer.



T-1005

## Starter Motor Assembly (91AB11000JB)

Ref. No.	Part No.	Qty.	Description
1		1	Bushing-End, Brush
2		1	Set-Brush
3		1	Holder-Brush
4	F7JL-11450-AA	1	Solenoid-Starter
5		1	Bushing-End, Drive
6	F7JL-11350-BA	1	Kit-Drive, Starter
7		1	Bushing-Drive, Starter
8		4	Spring-Brush
9		1	Kit-Install, Armature
*		1	Kit-Wiring, Service

Ref. No.	Part No.	Qty.	Description

\*Not Illustrated  
 Note: Order parts from your local Ford Power Products Dealer.



# Maintenance Record

Date								

# Maintenance Record

Date								

## Maintenance Record

Date								

