



Count on it.

Parts Catalog

**TransPro 648 Tow-Behind Trailer
ProCore® 648 or 648S Aerator**

Model No. 09964—Serial No. 323000000 and Up



Ordering Replacement Parts

To order replacement parts, please supply the part number, the quantity, and the description of each part desired.

Understanding Reference Numbers

Each identified part in an illustration has a reference number. The reference number for a part also appears in the parts list, along with other information about the part.

This catalog uses two special reference number formats, one to indicate parts in a service assembly and another to indicate the quantity of a given part in an illustration.

Service Assembly Reference Numbers

Parts in service assemblies have reference numbers in the form a:b. The a represents the reference number of the entire service assembly and the b represents a sequential number unique to each part within the service assembly.

For example, a wheel assembly might be identified by reference number 6, the tire by 6:1, the valve by 6:2, and the wheel by 6:3. When you order the assembly identified by reference number 6, you receive all parts identified by reference numbers 6:1, 6:2, and 6:3. However, you may also order any part individually. Reference numbers of this type appear in illustration and in parts lists.

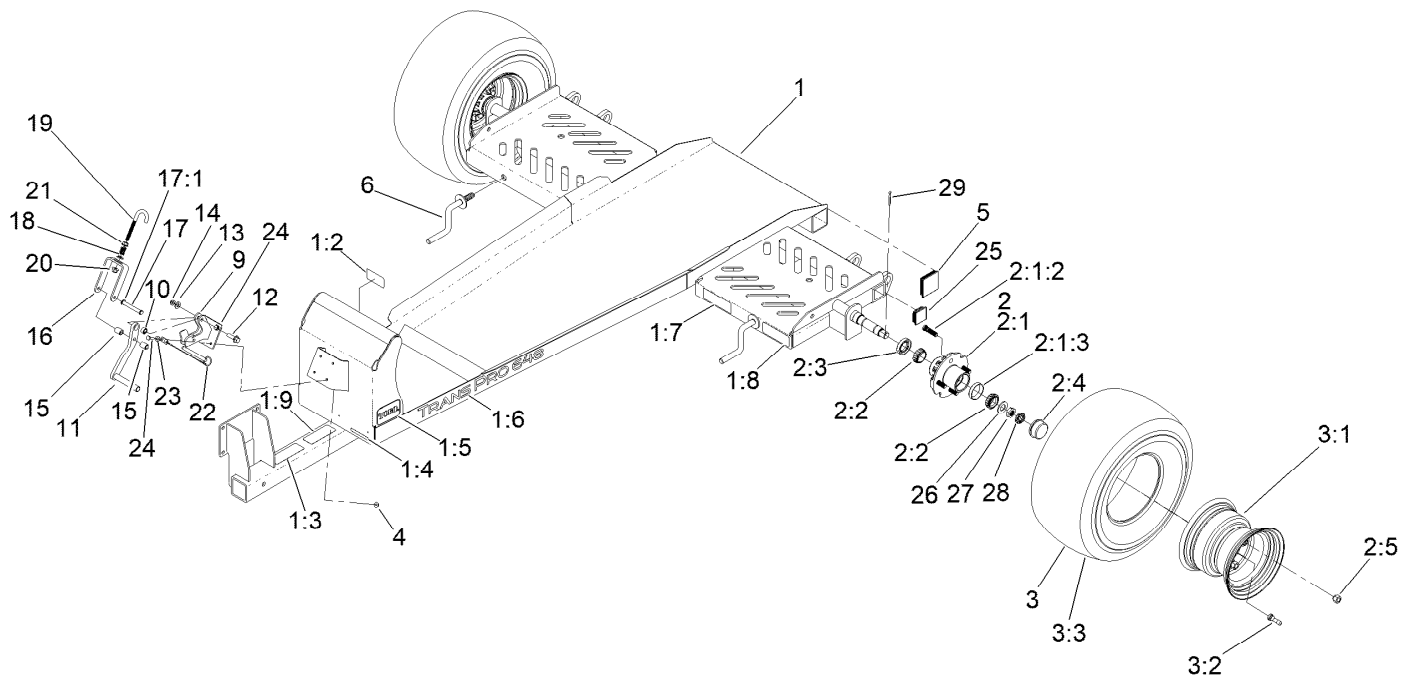
Reference Numbers Indicating Quantity

In an illustration, if a reference number indicates more than one part, the reference number has the form nX y. The n represents the quantity of the part, the X is the multiplication symbol, and the y represents the reference number.

For example, in an illustration, the reference number 2X 37 means that two of the parts identified by reference number 37 are indicated.

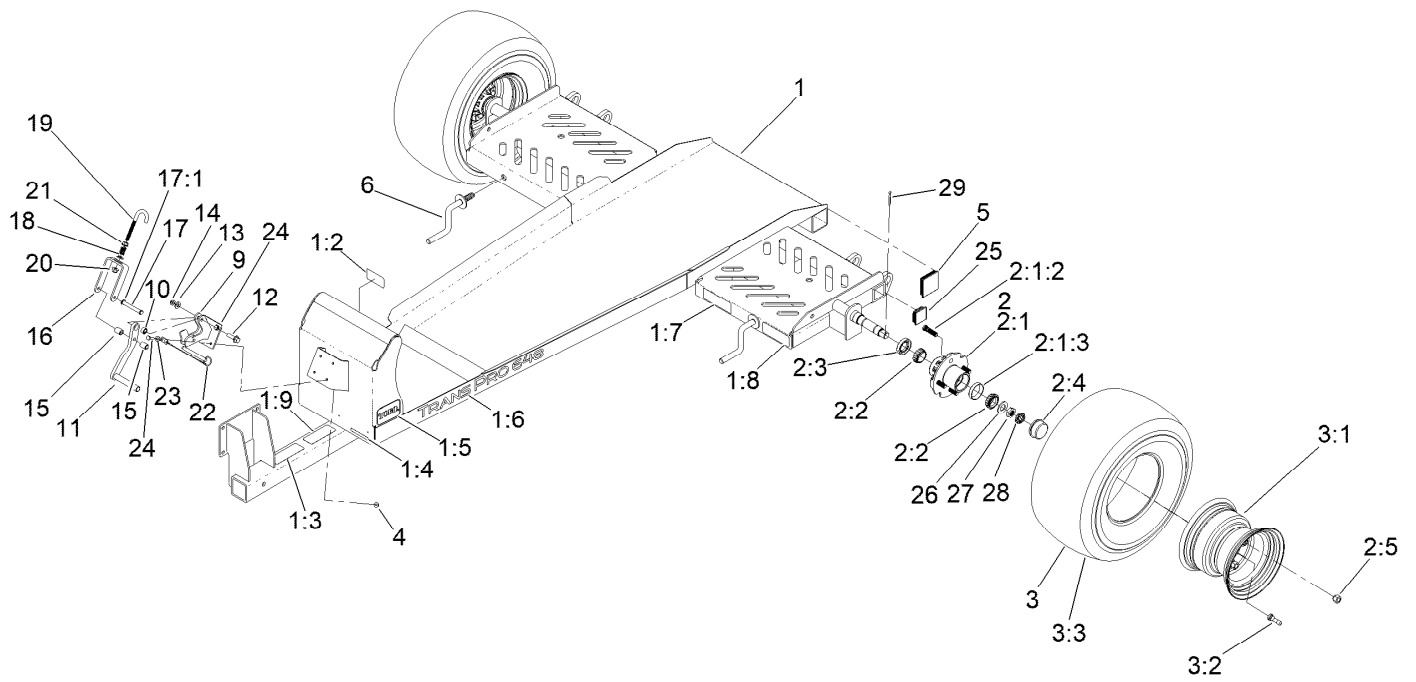
Contents

Frame and Wheels Assembly.....	4
Hitch Assembly.....	6
Ramp Assembly.....	7



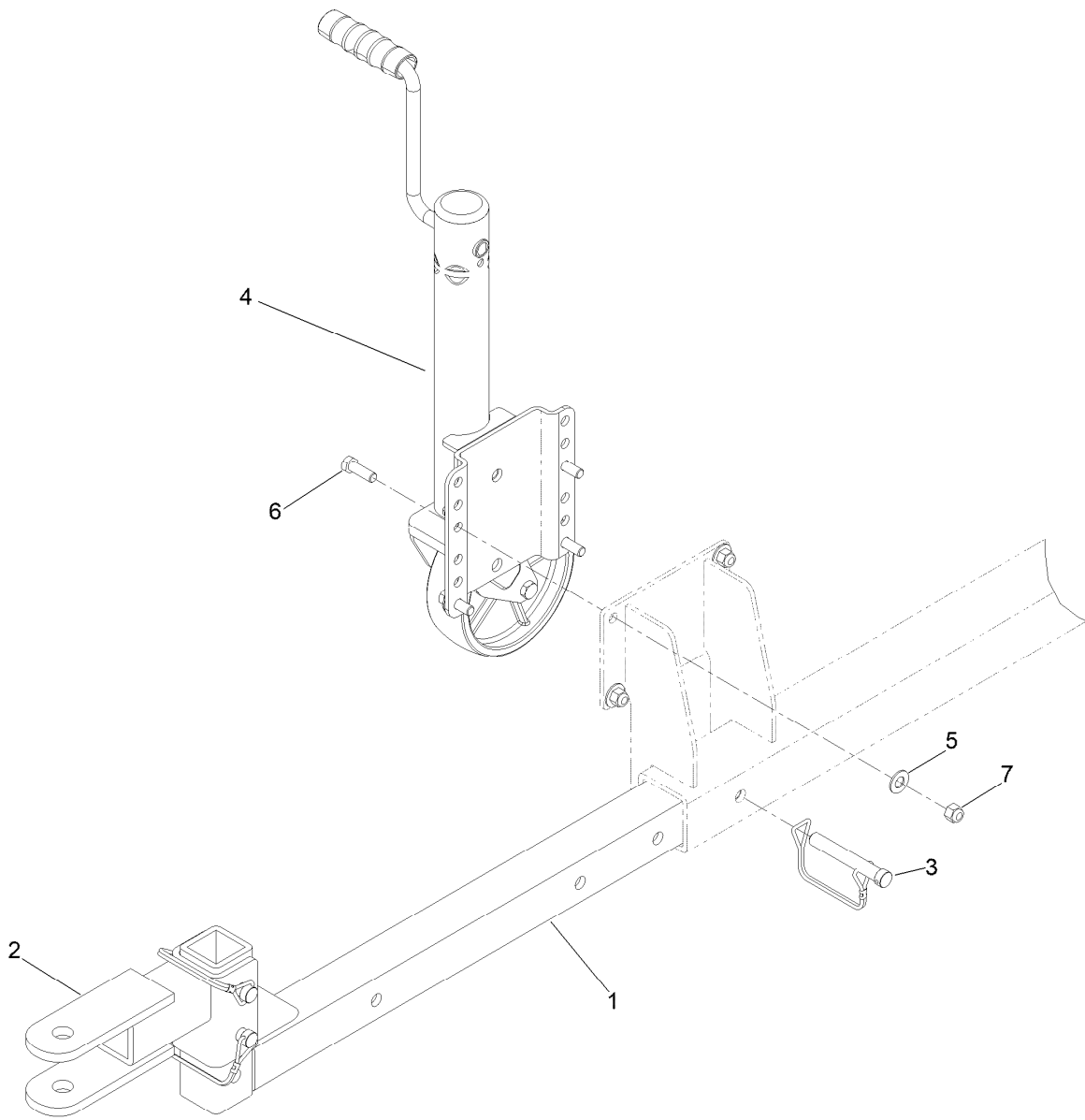
Frame and Wheels Assembly

Ref.	Part Number	Qty.	Description	Ref.	Part Number	Qty.	Description
1	147-9371	1	Frame ASM W/Decals	4	104-7201	4	Nut-HF, NI
1:2	140-5281	1	Decal-Warning, No Riders	5	147-9348	2	Plug-Sq
1:3	147-8352	1	Decal-Danger	6	161-3668	2	Crank ASM
1:4	133-8061	1	Decal-Warning	9	161-3715	1	Clamp Base ASM
1:5	70-2200	2	Decal	10	161-3718	1	Bushing
1:6	147-8354	2	Decal-Transpro 648	11	161-3717	1	Clamp Lever ASM
1:7	147-8350	1	Decal-Tire Pressure, Torque	12	3234-24	1	Screw-HHF
1:8	147-8351	1	Decal-Pin Storage	13	3256-24	2	Washer-Plain
1:9	147-8353	1	Decal-Latch	14	3296-59	1	Nut-Lock, NI
2	117-5115	2	Hub And Bearing ASM	15	161-3709	2	Spacer
2:1	117-8251	1	Hub ASM	16	161-3719	1	Lever-Clamp
2:1:2	114-3918	4	Stud-Wheel	17	161-3690	1	Clevis Pin ASM
2:1:3	254-72	2	Bearing-Cup, Tapered	17:1	32120-18	1	E-Ring
2:2	254-94	2	Bearing-Cone, Tapered	18	65-9940	1	Spring
2:3	112-1690	1	Seal-Oil	19	161-3682	1	Hook-J
2:4	241-119	1	Cap-Dust	20	104-8301	1	Nut-HF, NI
2:5	242-50	4	Nut-Lug	21	32128-21	1	Nut-HF Lock
3	144-3664	2	Wheel-Assembly	22	161-3692	1	Qr Pin ASM
3:1	137-2597	1	Rim	23	3256-22	4	Washer-Flat
3:2	232-27	1	Stem-Valve	24	321-5	4	Screw-HH
3:3	144-3665	1	Tire	25	147-9391	2	Plug-Square



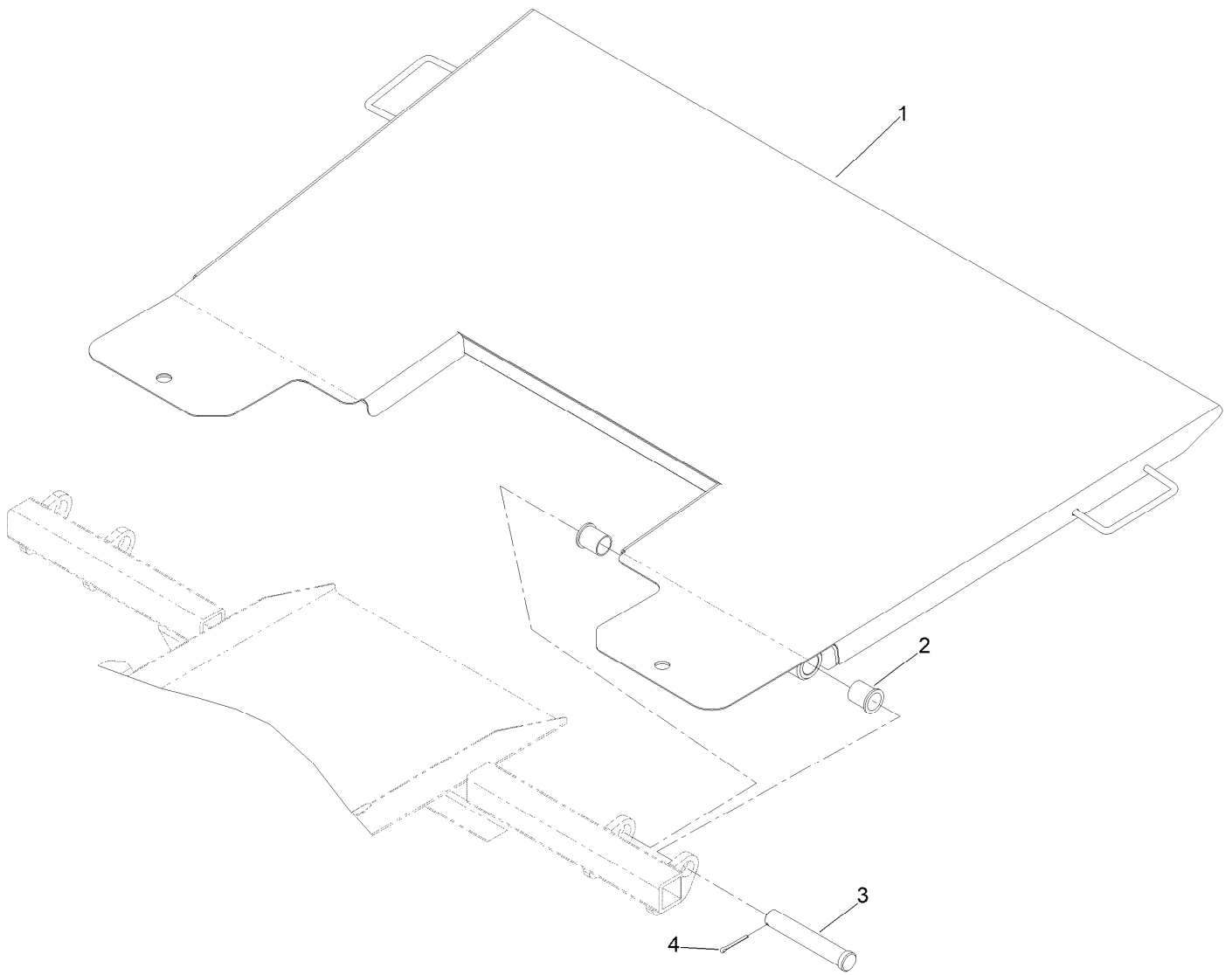
Frame and Wheels Assembly (continued)

<i>Ref.</i>	<i>Part Number</i>	<i>Qty.</i>	<i>Description</i>	<i>Ref.</i>	<i>Part Number</i>	<i>Qty.</i>	<i>Description</i>
26	117-8259	2	Washer-Spindle	28	93-0307	2	Nut-Lock, Retainer
27	117-8260	2	Nut	29	3272-18	2	Pin-Cotter



Hitch Assembly

Ref.	Part Number	Qty.	Description
1	147-9341	1	Tongue ASM
2	147-9345	1	Hitch Adapter ASM
3	147-9346	3	Pin-Lynch
4	147-9347	1	Jack ASM
5	3256-25	4	Washer-Flat
6	323-18	4	Screw-HH
7	3296-39	4	Nut-Lock, NI



Ramp Assembly

<i>Ref.</i>	<i>Part Number</i>	<i>Qty.</i>	<i>Description</i>
1	161-3650	1	Ramp ASM
2	147-9369	4	Bushing-Flange
3	147-9368	2	Pin-Clevis
4	3272-18	2	Pin-Cotter



Count on it.