



Count on it.

Parts Catalog

22in Recycler®

Lawn Mower

Model No. 21472—Serial No. 411764000 and Up



Ordering Replacement Parts

To order replacement parts, please supply the part number, the quantity, and the description of each part desired.

Understanding Reference Numbers

Each identified part in an illustration has a reference number. The reference number for a part also appears in the parts list, along with other information about the part.

This catalog uses two special reference number formats, one to indicate parts in a service assembly and another to indicate the quantity of a given part in an illustration.

Service Assembly Reference Numbers

Parts in service assemblies have reference numbers in the form a:b. The a represents the reference number of the entire service assembly and the b represents a sequential number unique to each part within the service assembly.

For example, a wheel assembly might be identified by reference number 6, the tire by 6:1, the valve by 6:2, and the wheel by 6:3. When you order the assembly identified by reference number 6, you receive all parts identified by reference numbers 6:1, 6:2, and 6:3. However, you may also order any part individually. Reference numbers of this type appear in illustration and in parts lists.

Reference Numbers Indicating Quantity

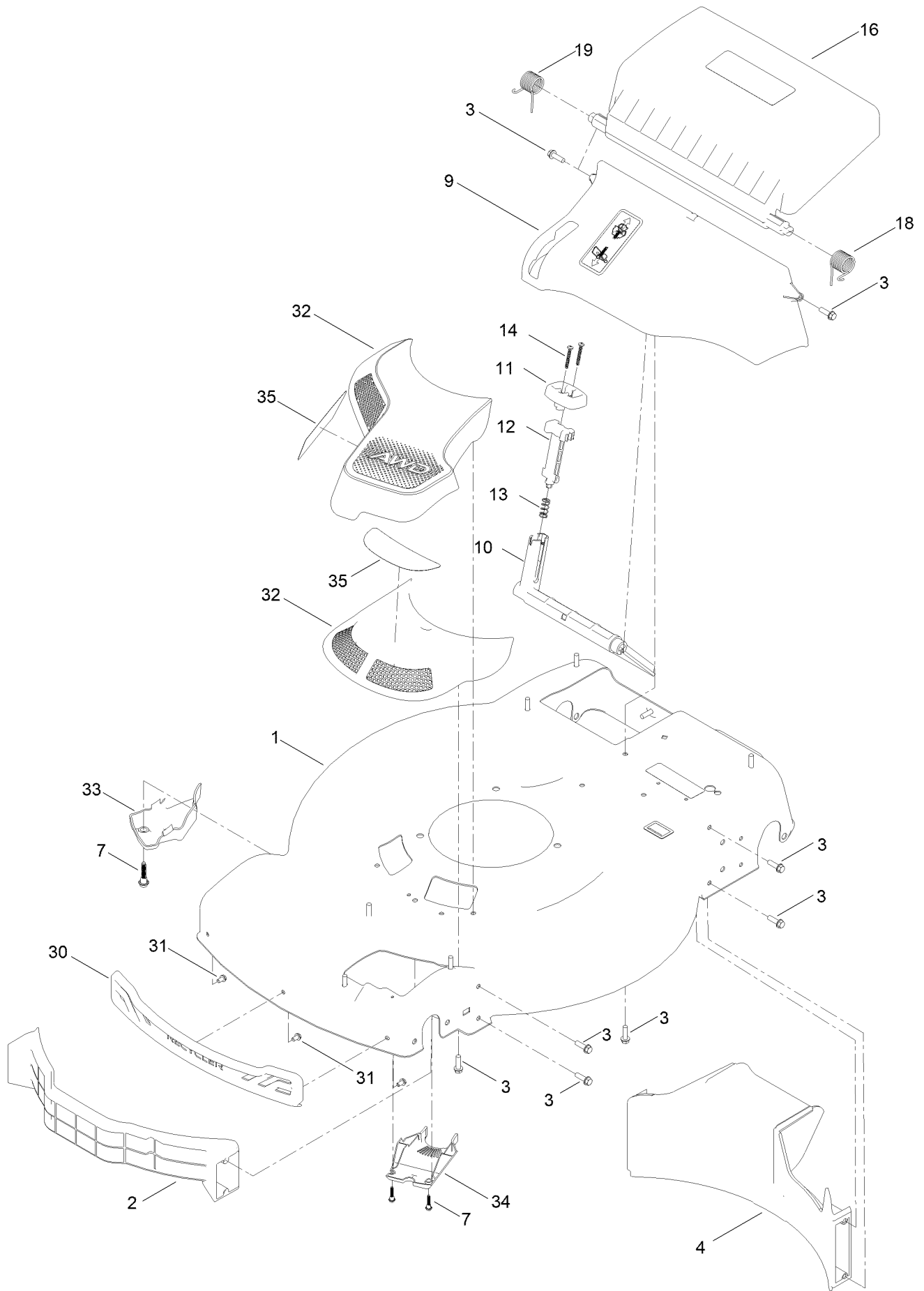
In an illustration, if a reference number indicates more than one part, the reference number has the form nX y. The n represents the quantity of the part, the X is the multiplication symbol, and the y represents the reference number.

For example, in an illustration, the reference number 2X 37 means that two of the parts identified by reference number 37 are indicated.

Contents

- Housing Assembly 4
- Rear Bag Assembly 6
- Decal Assembly 8
- Engine Assembly 10
- Front Wheel and Height-of-Cut Assembly 12
- Rear Wheel and Height-of-Cut Assembly 14
- Handle Assembly 16
- Attachments and Accessories 18

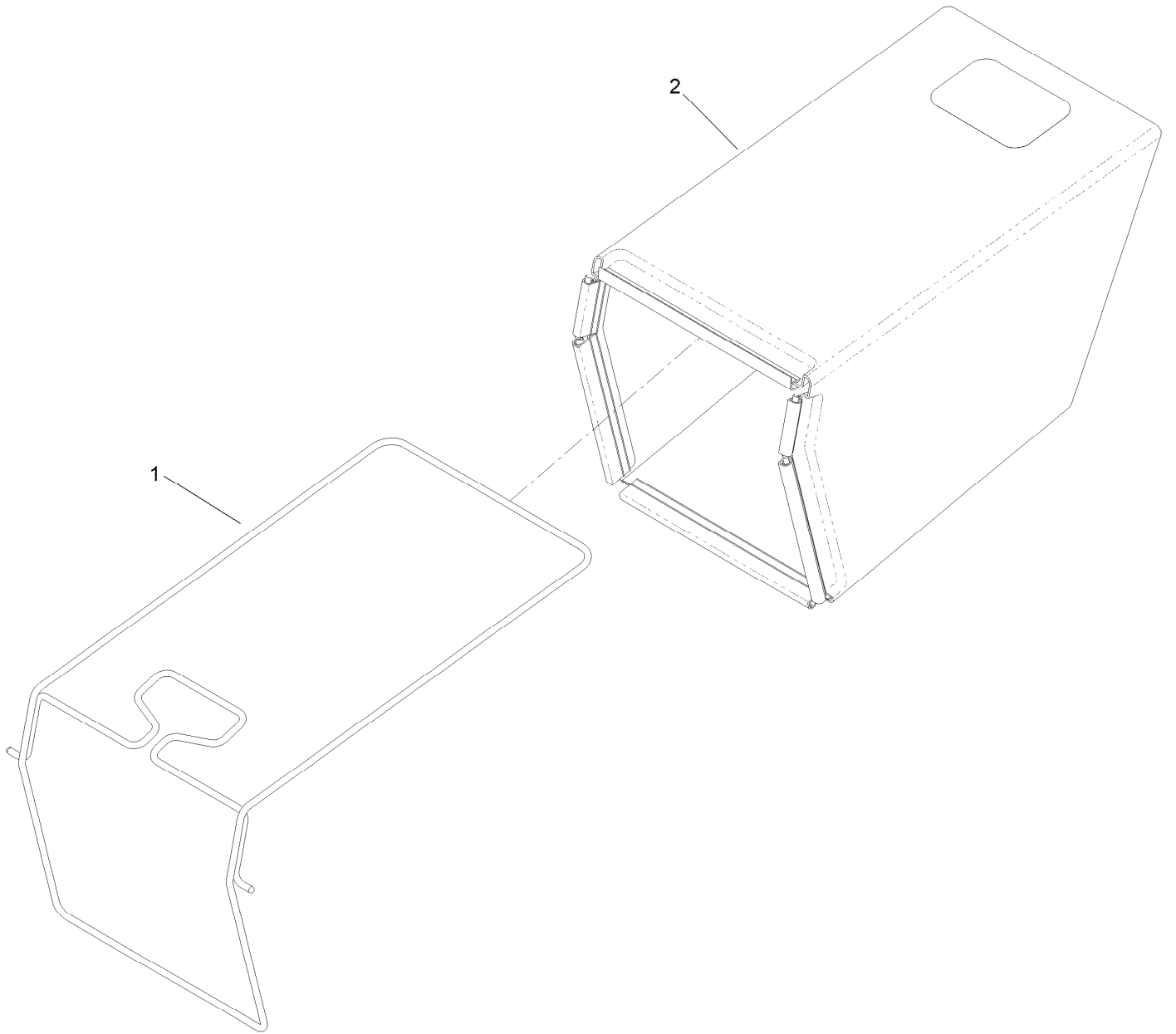
Housing Assembly



Housing Assembly (continued)

| <i>Ref.</i> | <i>Part Number</i> | <i>Qty.</i> | <i>Description</i> | <i>Ref.</i> | <i>Part Number</i> | <i>Qty.</i> | <i>Description</i> |
|-------------|--------------------|-------------|---------------------|-------------|--------------------|-------------|-------------------------|
| 1 | 144-3193 | 1 | Housing ASM | 14 | 32104-120 | 2 | Screw-PPH |
| 2 | 144-6427 | 1 | Baffle-Front | 16 | 139-5476 | 1 | ASM-Rear Door, In Mold |
| 3 | 46-8091 | 17 | Screw-HWH | 18 | 139-5478 | 1 | Spring-Torsion, LH |
| 4 | 139-5440 | 1 | Baffle-Rear, Rwd | 19 | 139-5479 | 1 | Spring-Torsion, RH |
| 7 | 131-0837 | 3 | Screw-Shoulder, HHF | 30 | 139-5457 | 1 | Bumper-Front |
| 9 | 140-2368 | 1 | ASM-Chute, In Mold | 31 | 139-5467 | 3 | Screw-Plastic, HWH |
| 10 | 139-5443 | 1 | Deflector-Recycle | 32 | 144-0211 | 1 | ASM-Intake, Awd |
| 11 | 139-5444 | 1 | Knob-Recycle | 33 | 140-2384 | 1 | Cover-Intake, Bottom |
| 12 | 139-5445 | 1 | Latch-Recycle | 34 | 140-2389 | 1 | Cover-Belt, Lower (Awd) |
| 13 | 140-4192 | 1 | Spring-Compression | 35 | 140-4186 | 1 | Decal |

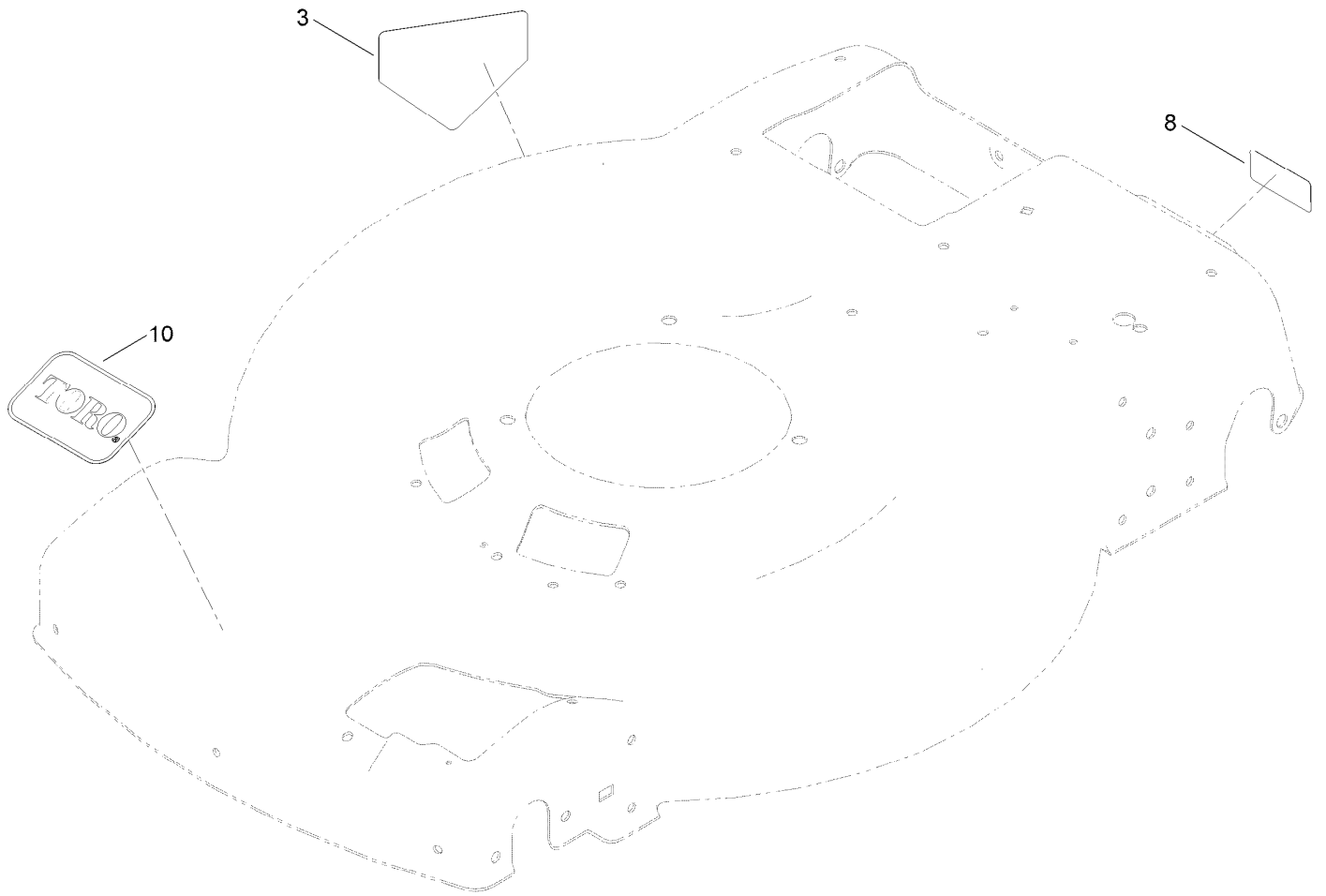
Rear Bag Assembly



Rear Bag Assembly (continued)

| <i>Ref.</i> | <i>Part Number</i> | <i>Qty.</i> | <i>Description</i> |
|-------------|--------------------|-------------|--------------------|
| 1 | 139-5470-03 | 1 | ASM-Frame, Bag |
| 2 | 139-5471 | 1 | ASM-Bag, Grass |

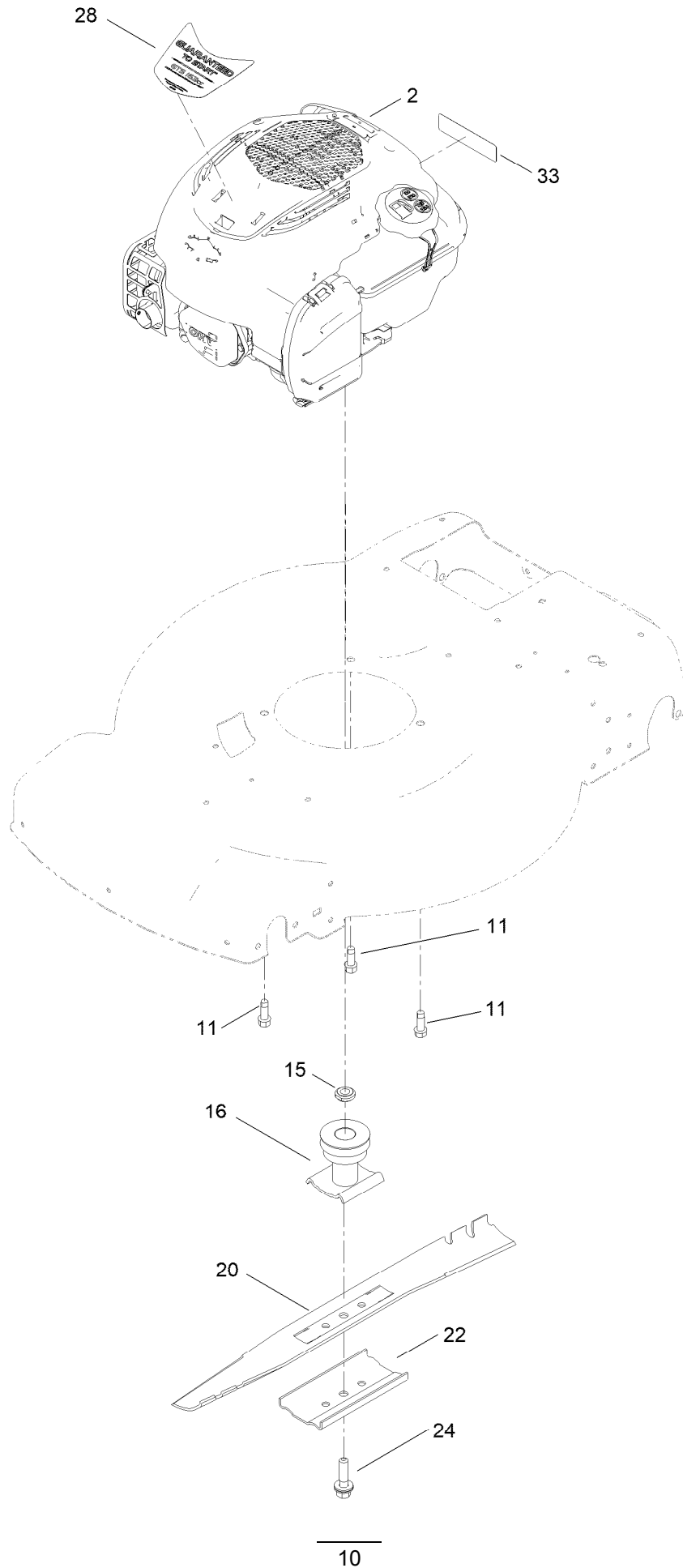
Decal Assembly



Decal Assembly (continued)

| <i>Ref.</i> | <i>Part Number</i> | <i>Qty.</i> | <i>Description</i> |
|-------------|--------------------|-------------|-----------------------------------|
| 3 | 94-8072 | 1 | Decal-Danger |
| 8 | 121-5684 | 1 | Decal-Location, Service Dealer |
| 10 | 140-4183 | 1 | Decal |

Engine Assembly



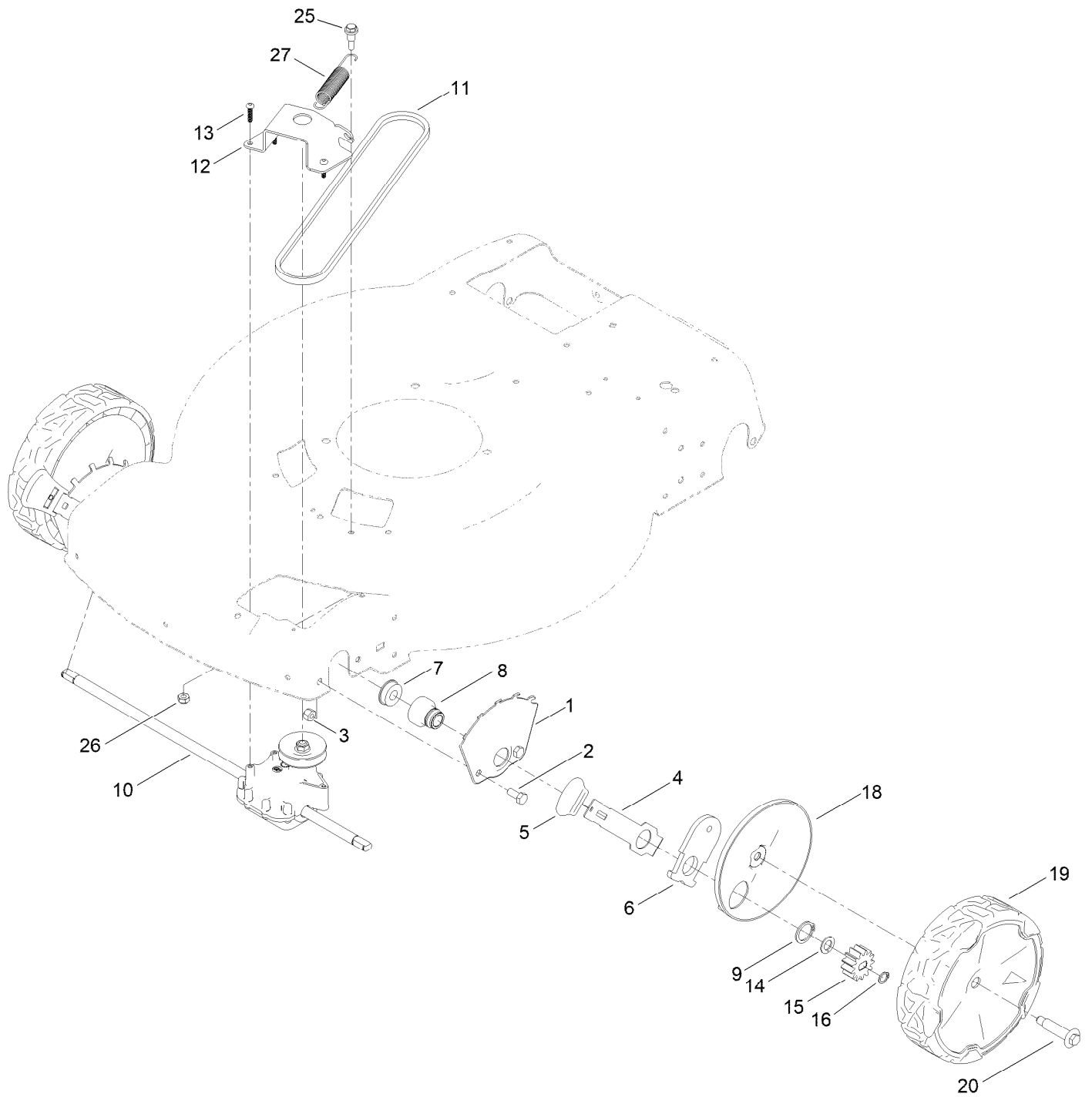
Engine Assembly (continued)

| <i>Ref.</i> | <i>Part Number</i> | <i>Qty.</i> | <i>Description</i> | <i>Ref.</i> | <i>Part Number</i> | <i>Qty.</i> | <i>Description</i> |
|-------------|--------------------|-------------|-----------------------------------|-------------|--------------------|-------------|-----------------------|
| 2 | | 1 | Engine-Briggs, 104M020010F1 ●■ | 20 | 131-4547-03 | 1 | Blade-22 Inch |
| 11 | 121-5844 | 3 | Screw-Thd Form, HWH | 22 | 108-3766-03 | 1 | Support-Blade |
| 15 | 106-3999 | 1 | Spacer-Driver | 24 | 125-2466 | 1 | Bolt-Blade |
| 16 | 130-6705 | 1 | Driver-Blade | 28 | 140-4248 | 1 | Decal - Briggs 725 Ex |
| | | | | 33 | 133-8062 | 1 | Decal-Spark Arrestor |

● Not serviced separately

■ Obtain parts from www.briggsandstratton.com

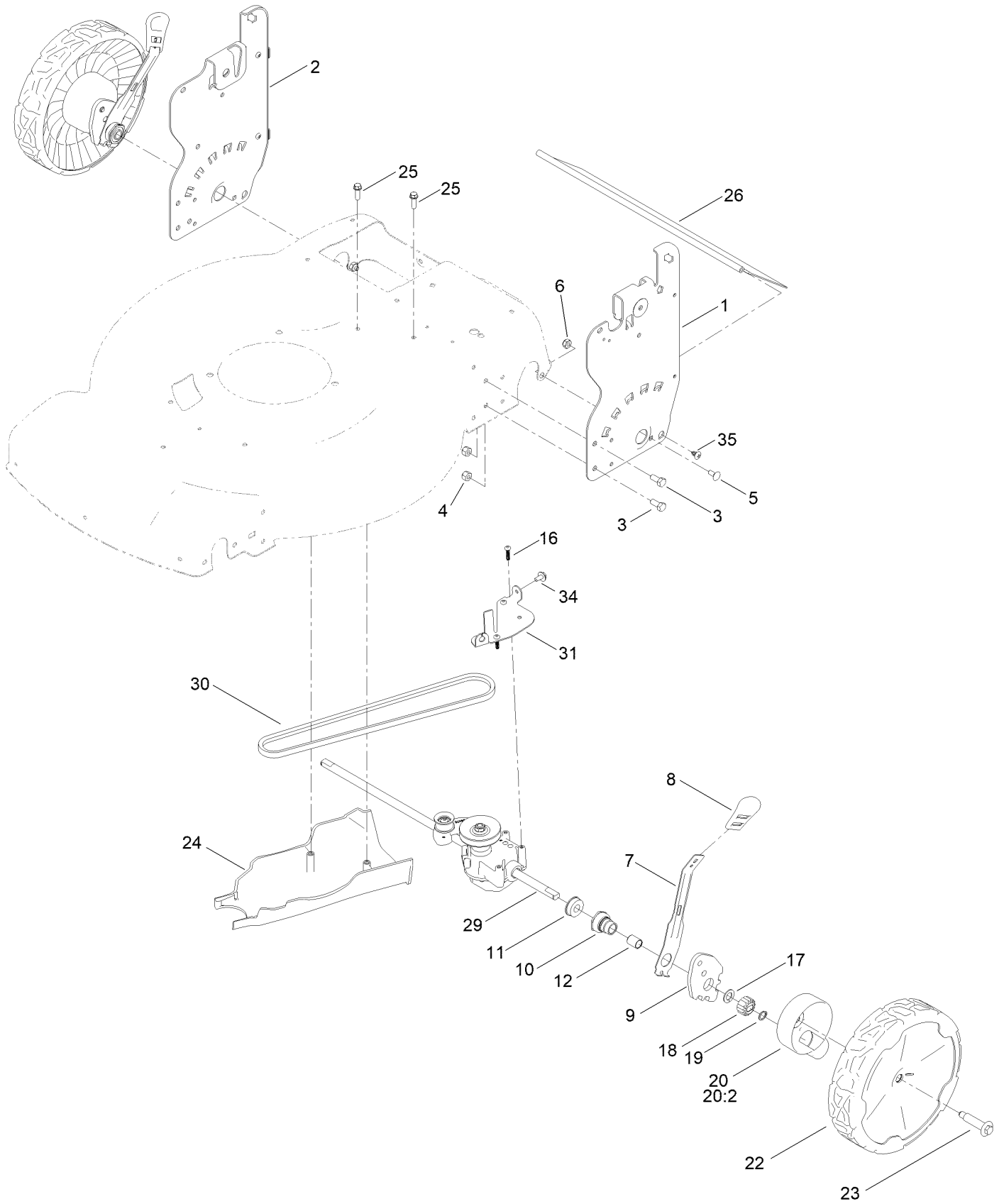
Front Wheel and Height-of-Cut Assembly



Front Wheel and Height-of-Cut Assembly (continued)

| <i>Ref.</i> | <i>Part Number</i> | <i>Qty.</i> | <i>Description</i> | <i>Ref.</i> | <i>Part Number</i> | <i>Qty.</i> | <i>Description</i> |
|-------------|--------------------|-------------|-----------------------|-------------|--------------------|-------------|------------------------------|
| 1 | 115-1956-05 | 2 | Plate-HOC,Front Fsvq | 13 | 108-7476 | 3 | Screw-Plastite |
| 2 | 322-3 | 4 | Screw-HH | 14 | 110-7191 | 2 | Washer-Thrust |
| 3 | 3296-29 | 4 | Nut-Lock, NI | 15 | 131-0896 | 2 | Gear-Pinion, 13T |
| 4 | 105-1809 | 2 | Arm-Spring | 16 | 32151-61 | 2 | Ring-Retaining |
| 5 | 110-0549 | 2 | Knob-HOC | 18 | 140-2364 | 2 | ASM-Cover, Wheel (Dk Gray) |
| 6 | 137-9128 | 2 | Arm-Pivot, Front | 19 | 140-2358 | 2 | ASM-8" Wheel, Fwd (Bushings) |
| 7 | 104-8699 | 2 | Bearing-Ball | 20 | 139-1789 | 2 | Wheel Bolt |
| 8 | 131-0836 | 2 | Retainer-Bearing, HOC | 25 | 104-0858 | 1 | Bolt-Shoulder |
| 9 | 32151-36 | 2 | Ring-Retaining | 26 | 3296-16 | 1 | Nut-Lock, NI |
| 10 | 137-4823 | 1 | Transmission | 27 | 140-4193 | 1 | Spring-Extension |
| 11 | 71-9450 | 1 | V-Belt | | | | |
| 12 | 114-7978-03 | 1 | Bracket-Transmission | | | | |

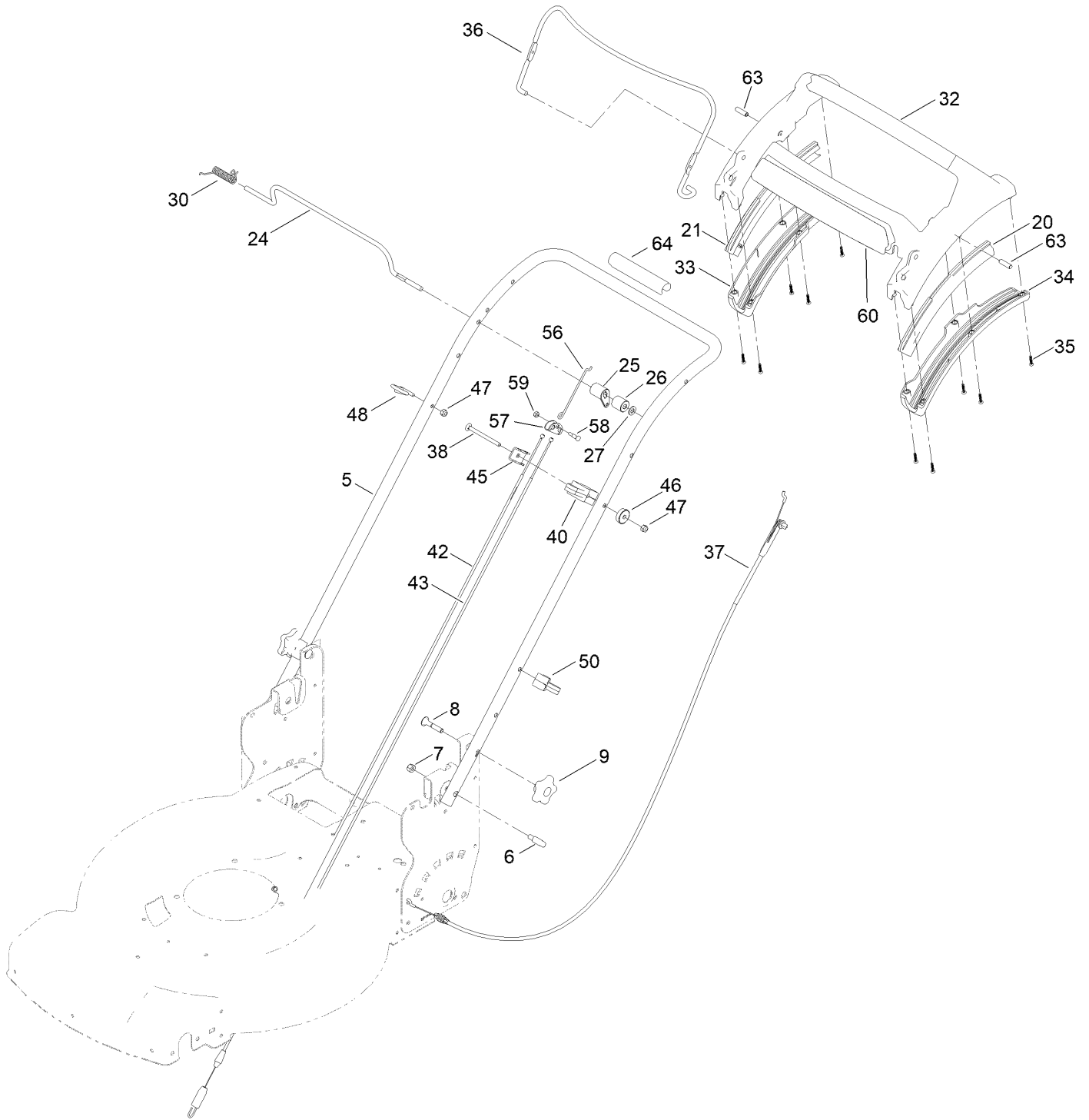
Rear Wheel and Height-of-Cut Assembly



Rear Wheel and Height-of-Cut Assembly (continued)

| <i>Ref.</i> | <i>Part Number</i> | <i>Qty.</i> | <i>Description</i> | <i>Ref.</i> | <i>Part Number</i> | <i>Qty.</i> | <i>Description</i> |
|-------------|--------------------|-------------|-----------------------|-------------|--------------------|-------------|---------------------------|
| 1 | 144-6476-05 | 1 | Plate-HOC, LH | 18 | 131-5399 | 2 | Gear-Pinion, 15T |
| 2 | 144-6515-05 | 1 | Plate-HOC, RH (ISO) | 19 | 32151-61 | 2 | Ring-Retaining |
| 3 | 322-3 | 4 | Screw-HH | 20 | 140-2362 | 2 | ASM-Cover, Gear (Dk Gray) |
| 4 | 3296-29 | 4 | Nut-Lock, NI | 20:2 | 614426 | 1 | Washer-Stepped |
| 5 | 3229-11 | 2 | Screw-CARR | 22 | 140-2350 | 2 | ASM-9.65" Wheel, Geared |
| 6 | 3296-16 | 2 | Nut-Lock, NI | 23 | 139-1789 | 2 | Wheel Bolt |
| 7 | 132-4486 | 2 | Arm-Spring | 24 | 130-6709 | 1 | Cover-Belt, Rear |
| 8 | 110-0549 | 2 | Knob-HOC | 25 | 46-8091 | 2 | Screw-HWH |
| 9 | 139-5451 | 2 | Arm-Pivot, Rear | 26 | 139-6597 | 1 | Shield-Trailing |
| 10 | 108-9779 | 2 | Retainer-Bushing, HOC | 29 | 140-2370 | 1 | Transmission-Awd |
| 11 | 104-8699 | 2 | Bearing-Ball | 30 | 140-2380 | 1 | Belt-Awd, 34.50 |
| 12 | 108-9782 | 2 | Bushing-Sleeve | 31 | 140-2371-03 | 1 | Guide-Belt, Awd |
| 16 | 108-7476 | 3 | Screw-Plastite | 34 | 46-8560 | 1 | Screw-HHFTF |
| 17 | 110-7191 | 2 | Washer-Thrust | 35 | 117-1092 | 2 | Screw-PTH |

Handle Assembly



Handle Assembly (continued)

| <i>Ref.</i> | <i>Part Number</i> | <i>Qty.</i> | <i>Description</i> | <i>Ref.</i> | <i>Part Number</i> | <i>Qty.</i> | <i>Description</i> |
|-------------|--------------------|-------------|---------------------------------|-------------|--------------------|-------------|-----------------------------|
| 5 | 144-0227-05 | 1 | Handle-Curved, Awd | 37 | 139-6594 | 1 | Cable-Brake, Pp B&s |
| 6 | 139-6599 | 2 | Bolt-Shoulder, Handle | 38 | 144-0222 | 1 | Screw-CARR |
| 7 | 3296-29 | 2 | Nut-Lock, NI | 40 | 139-6582 | 1 | Anchor-Cable, Awd |
| 8 | 131-9663 | 2 | Screw-CARR | 42 | 140-2391 | 1 | Cable-Traction, Front (Awd) |
| 9 | 117-5976 | 2 | Knob-Handle | 43 | 140-2392 | 1 | Cable-Traction, Rear (Awd) |
| 20 | 140-2367 | 1 | Guide-Curved, LH (Rwd) | 45 | 136-5922 | 1 | Clamp-Cable |
| 21 | 140-2366 | 1 | Guide-Curved, RH (Rwd) | 46 | 136-9075 | 1 | Washer-Curved |
| 24 | 139-5464 | 1 | Rod-Control, Traction | 47 | 3296-73 | 2 | Nut-Lock, NI |
| 25 | 140-2378 | 1 | Lever-Traction, Awd | 48 | 86-9671 | 1 | Guide-Rope |
| 26 | 144-0219 | 1 | Spacer-Lever, Traction | 50 | 114-7988 | 1 | Guide-Cable |
| 27 | 3256-23 | 1 | Washer-Plain | 56 | 140-2379 | 1 | Linkage-Equalizer |
| 30 | 140-4194 | 1 | Spring-Torsion | 57 | 144-0213 | 1 | Yoke-Cable |
| 32 | 139-6569 | 1 | Handle-Personal Pace, Curved | 58 | 144-0212 | 1 | Bolt-Equalizer |
| 33 | 139-6567 | 1 | Bottom-Handle, RH | 59 | 3296-2 | 1 | Nut-Lock, NI |
| 34 | 139-6568 | 1 | Bottom-Handle, LH | 60 | 140-4187 | 1 | Decal |
| 35 | 94-4496 | 10 | Screw-PPH | 63 | 139-6577 | 2 | Pin-Handle, Pp |
| 36 | 140-4023-03 | 1 | Bail-Brake | 64 | 131-4551 | 1 | Cover-Handle |

Attachments and Accessories

For 21472 22in Recycler Lawn Mower

| Product Name | Model/Part |
|--|-------------------|
| Traction Assist Handle Kit..... | 144-6377 |
| 22 Inch Atomic Blade..... | 59534P |
| Briggs Maint Kit..... | 130-8148 |
| Lawnmower Cover..... | 490-7462 |
| Lawn Striping Kit with 22in Roller..... | 20601 |
| Bag-Walk Behind (Toro)..... | 490-7318 |
| Fuel Stabilizer .05 oz..... | 130-2393 |
| Summer Oil-Case of 24 (20oz Bottles)..... | 38916 |
| 4-Cycle Fuel, Snow And Lawn 32oz Can..... | 131-3823 |
| Chute ASM..... | 139-6556 |
| Oil-30/10W-30 Synthetic (Quart)..... | 138-6053 |
| Toro Premium Fuel Treatment 12oz Bottle..... | 131-6572 |
| Toro 4-Cycle SAE 30 Oil (32oz Bottle)..... | 38903 |

For 21472 22in Recycler Lawn Mower

| Product Name | Model/Part |
|--|-------------------|
| Traction Assist Handle Kit..... | 144-6377 |
| 22 Inch Atomic Blade..... | 59534P |
| Briggs Maint Kit..... | 130-8148 |
| Lawnmower Cover..... | 490-7462 |
| Lawn Striping Kit with 22in Roller..... | 20601 |
| Bag-Walk Behind (Toro)..... | 490-7318 |
| Fuel Stabilizer .05 oz..... | 130-2393 |
| Summer Oil-Case of 24 (20oz Bottles)..... | 38916 |
| 4-Cycle Fuel, Snow And Lawn 32oz Can..... | 131-3823 |
| Chute ASM..... | 139-6556 |
| Oil-30/10W-30 Synthetic (Quart)..... | 138-6053 |
| Toro Premium Fuel Treatment 12oz Bottle..... | 131-6572 |
| Toro 4-Cycle SAE 30 Oil (32oz Bottle)..... | 38903 |

Notes:



Count on it.