

Worklight Kit

Kit No. 135-7320

Installation Instructions

Safety Alert Symbol

This Safety Alert Symbol (Figure 1) is used both in this instruction sheet and on the machine to identify important safety messages which must be followed to avoid accidents

This symbol means: **ATTENTION! BECOME ALERT! YOUR SAFETY IS INVOLVED!**



g000502

Figure 1
Safety Alert Symbol

The safety alert symbol appears above information which alerts you to unsafe actions or situations and will be followed by the word **DANGER**, **WARNING**, or **CAUTION**.

DANGER: Indicates an imminently hazardous situation which, if not avoided, **Will** result in death or serious injury.

WARNING: Indicates a potentially hazardous situation which, if not avoided, **Could** result in death or serious injury.

CAUTION: Indicates a potentially hazardous situation which, if not avoided, **May** result in minor or moderate injury.

This manual uses two other words to highlight information. **Important** calls attention to special mechanical information and **Note** emphasizes general information worthy of special attention.

⚠ WARNING

While maintenance or adjustments are being made, someone could start the engine. Accidental starting of the engine could seriously injure you or other bystanders.

Remove the key from the ignition switch and engage parking brake before you do any maintenance.

Note: Determine the left and right sides of the machine from the normal operating position.



Loose Parts

Use the chart below to verify that all parts have been shipped.

Item No.	Part No.	Description	Qty
1	135-7321	Harness-Wire	1
2	135-7848	Bracket-Light, LH decal	1
2:2	130-5989	Decal-work light	1
3	135-7323-03	Bracket-Light, RH	1
4	135-7077	Light-LED	2

Item No.	Part No.	Description	Qty
5	95-8999	Switch	1
6	3290-378	Tie-Plastic	10
7	3229-11	Bolt-Carriage 1/4-20 x 5/8	4
8	104-7201	Nut-Nyloc 1/4-20 Flg	4
9	135-1531	Harness-Wiring-Accy	1

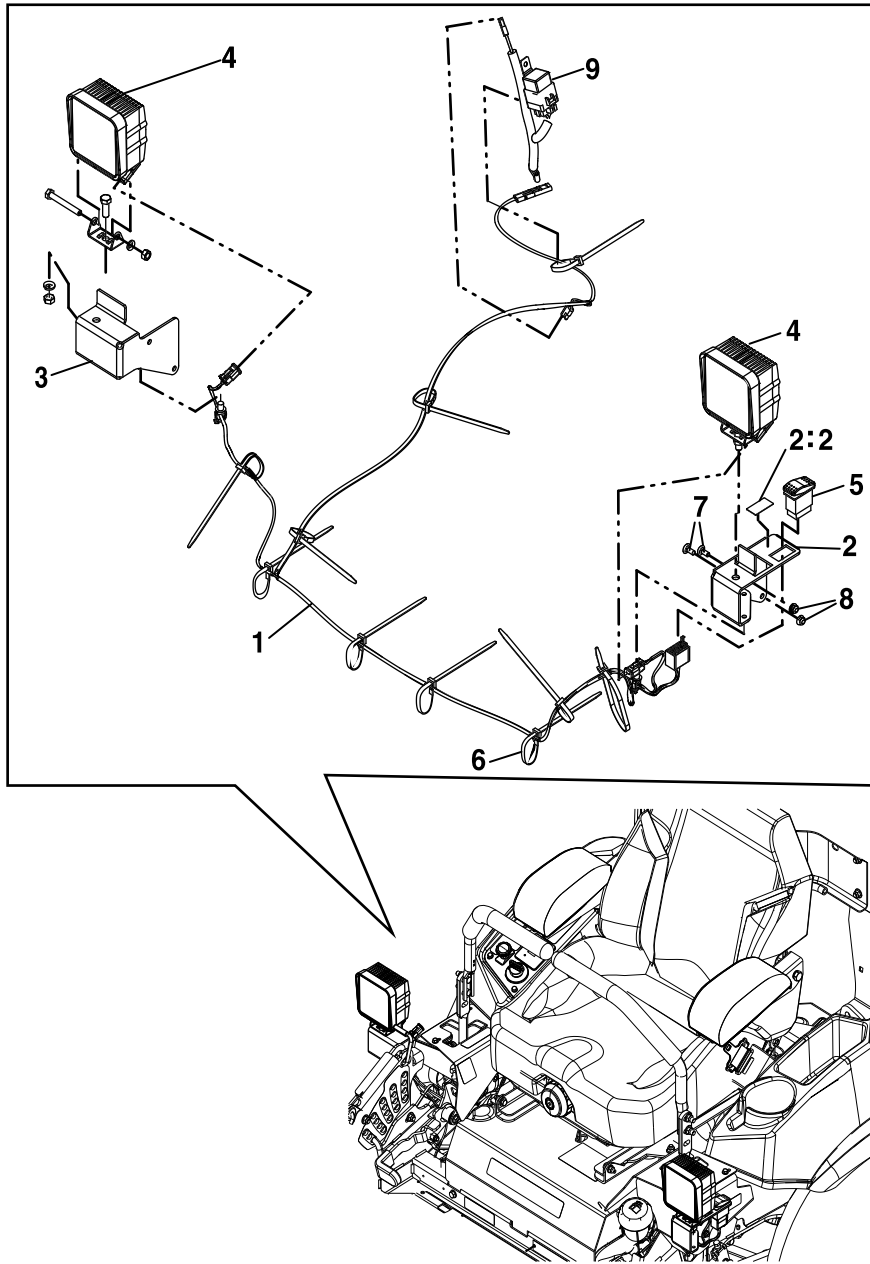


Figure 2

g293080

Installation Instructions

1. Make sure all moving parts have stopped, parking brake is engaged, and key has been removed.
2. Disconnect the negative battery cable.
3. Remove and retain the LH motion control cover and its hardware.
4. Using two 1/4-20 x 5/8 inch carriage bolts and nyloc nuts, install the LH light bracket onto the LH motion control frame bracket as shown in [Figure 3](#).

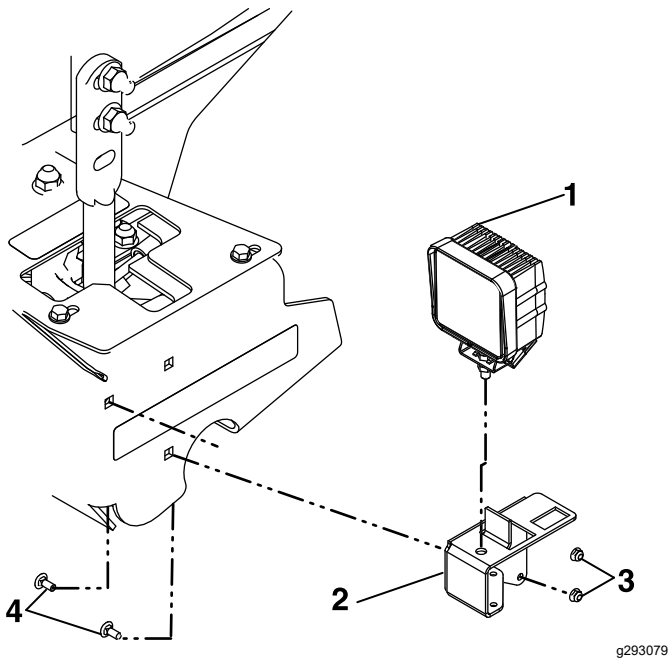


Figure 3

- | | |
|---------------------|------------------------------------|
| 1. Light | 3. 1/4-20 nyloc nut |
| 2. LH light bracket | 4. 1/4-20 x 5/8 inch carriage bolt |

5. Install the light to the LH light bracket as shown in [Figure 2](#).
6. Repeat steps 3 through 5 for the right side.
7. Remove the floor pan.
8. Find the LH side of the wiring harness (see [Figure 2](#)).
9. Route the LH side of the harness up under the motion control bracket and over the frame tube. Make sure the harness is routed under the return to neutral spring as shown in [Figure 4](#).

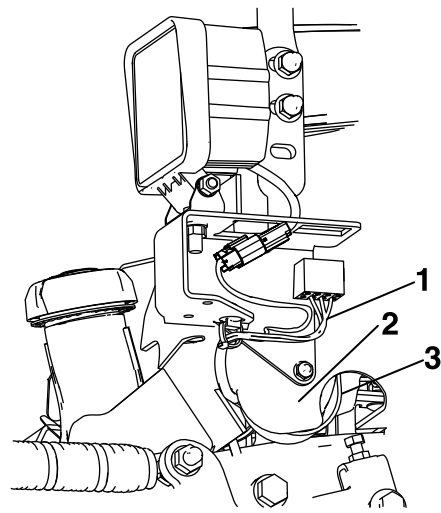


Figure 4

- | | |
|----------------------------|-----------------------------|
| 1. Wire harness | 3. Return to neutral spring |
| 2. LH motion control cover | |

10. Route the harness behind the front tank seat support next to the existing main harness.
11. Route RH light lead up beside the park brake handle and over the main frame tube and up to the RH light. Connect the harness to the RH light.
12. Remove and retain the control panel cover and its mounting hardware from the RH pod.
13. Route the harness up past the motion control casting and into the RH pod.
14. Remove and retain the plug from the 12V accessory connector on the mower harness. If the current accessory connector has a two wire connector, connect it to the light harness directly. If the accessory plug has a three wire connector, connect the accessory connector to the accessory relay harness, item 9 in [Figure 2](#).
15. If used, attach the accessory relay harness to the main frame. Mount the relay harness to an existing hole near the back of the RH control panel pod.
16. Coil the excess wire as necessary and zip tie in a bundle to store under the control panel cover.
17. Connect the LH light to the light harness.
18. Connect the light harness to the switch. Make sure the connectors are fully inserted onto the terminals. Carefully snap the switch into the cutout. Install the switch into the LH bracket so the lights are on when the switch is pushed down on the front and toggling it rearward will shut the lights off (see [Figure 6](#)).
19. Attach the wire harness to the brackets using the clips provided on the harness. Rotate the harness so the connections are tucked under

the brackets. Use a zip tie to help secure the harness to the brackets as necessary.

20. Use the remaining zip ties to secure the light harness to the mower. Make sure to secure the harness so that any moving parts do not rub the harness (reference [Figure 5](#)).

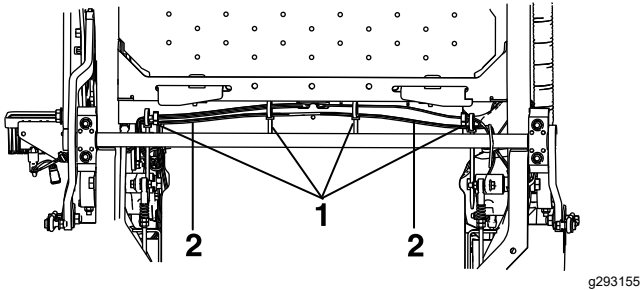


Figure 5
Underside of the floor pan

1. Zip ties
2. Wire

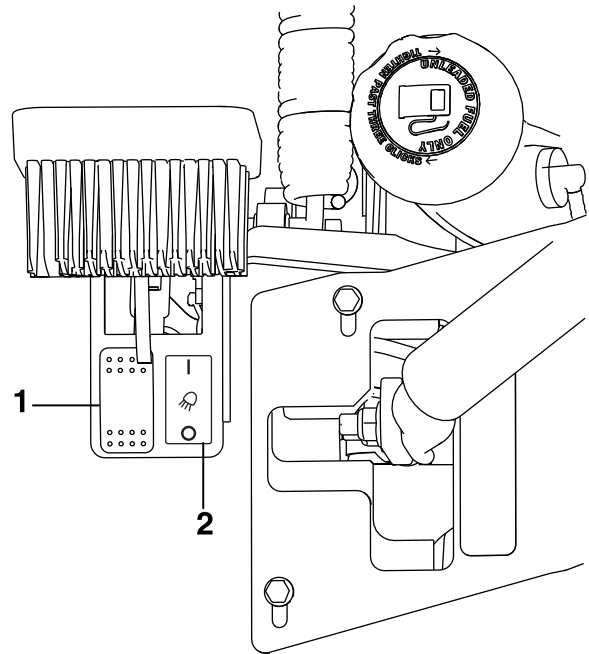


Figure 7

1. Switch
2. Decal

21. Re-install the control panel cover, the motion control covers, and the floor pan.
22. Reconnect the negative battery cable.

4. If the lights do not turn on, check the battery connection and make sure all electrical connections are snug and no pins are bent.

Operating Instructions

1. With the key switch off and the light switch off, the work lights should not be on (see [Figure 6](#)).

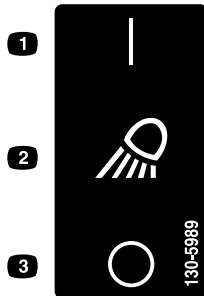


Figure 6

1. On
2. Work light
3. Off

2. Toggle the light switch and the light should remain off. If the lights turn on, check the installation and connection of the relay wiring harness adapter.
3. Turn the key switch on. The light switch should toggle the lights off and on. The lights should be off when the switch is depressed down on the "O" side of the decal (see [Figure 6](#) and [Figure 7](#)). If the lights operate opposite of this remove and turn the switch 180 degrees and re-install.