



Lower Control Bar Kit	
Part No. 99-8523	INSTALLATION INSTRUCTIONS

Loose Parts

Note: Use the chart below to identify parts for assembly.

DESCRIPTION	QTY.	USE
Lower Control Bar	1	Install Lower Control Bar
Cotter Pins	2	

Removing Existing Lower Control Bar

1. Remove the 2 clevis pins installed in existing lower control bar. Remove push on washers after clevis pins are removed. Discard the push on washers (Fig.1).
2. Remove nut and bolt from upper control bar and then remove the existing lower control bar (Fig.1).

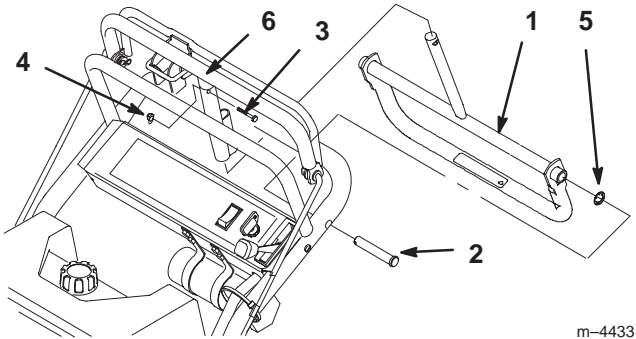


Figure 1

- | | |
|-------------------------------|----------------------|
| 1. Existing lower control bar | 4. Nut |
| 2. Clevis pin | 5. Push on washer |
| 3. Bolt | 6. Upper control bar |

m-4433

Installing Lower Control Bar

1. Install the new lower control bar into the upper control bar and align it with holes in the handle (Fig. 2).
2. Install the new clevis pins through the handle and into the lower control bar. Align the holes in the clevis pins with the holes in the new lower control bar (Fig. 2).
3. Install the new cotter pins into aligned holes (Fig. 2).
4. Install the nut and bolt into the upper control bar and tighten securely (Fig. 2).

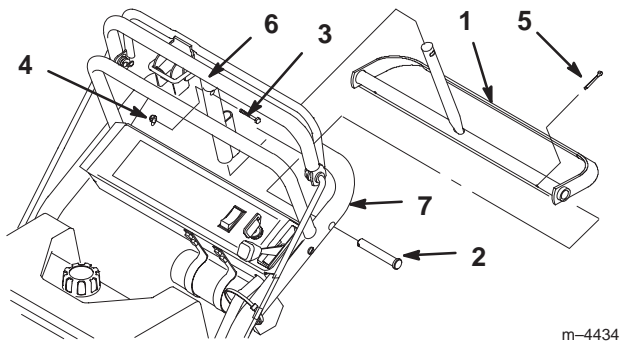


Figure 2

- | | |
|----------------------|----------------------|
| 1. Lower control bar | 5. Cotter pin |
| 2. Clevis pin | 6. Upper control bar |
| 3. Bolt | 7. Handle |
| 4. Nut | |