



Count on it.

Parts Catalog

**Floor Scraper
e-Dingo Compact Tool Carrier**

Model No. 22673—Serial No. 324000000 and Up



Ordering Replacement Parts

To order replacement parts, please supply the part number, the quantity, and the description of each part desired.

Understanding Reference Numbers

Each identified part in an illustration has a reference number. The reference number for a part also appears in the parts list, along with other information about the part.

This catalog uses two special reference number formats, one to indicate parts in a service assembly and another to indicate the quantity of a given part in an illustration.

Service Assembly Reference Numbers

Parts in service assemblies have reference numbers in the form a:b. The a represents the reference number of the entire service assembly and the b represents a sequential number unique to each part within the service assembly.

For example, a wheel assembly might be identified by reference number 6, the tire by 6:1, the valve by 6:2, and the wheel by 6:3. When you order the assembly identified by reference number 6, you receive all parts identified by reference numbers 6:1, 6:2, and 6:3. However, you may also order any part individually. Reference numbers of this type appear in illustration and in parts lists.

Reference Numbers Indicating Quantity

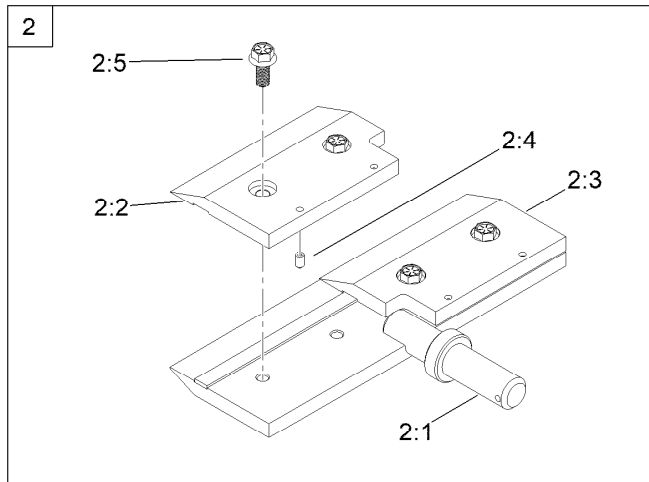
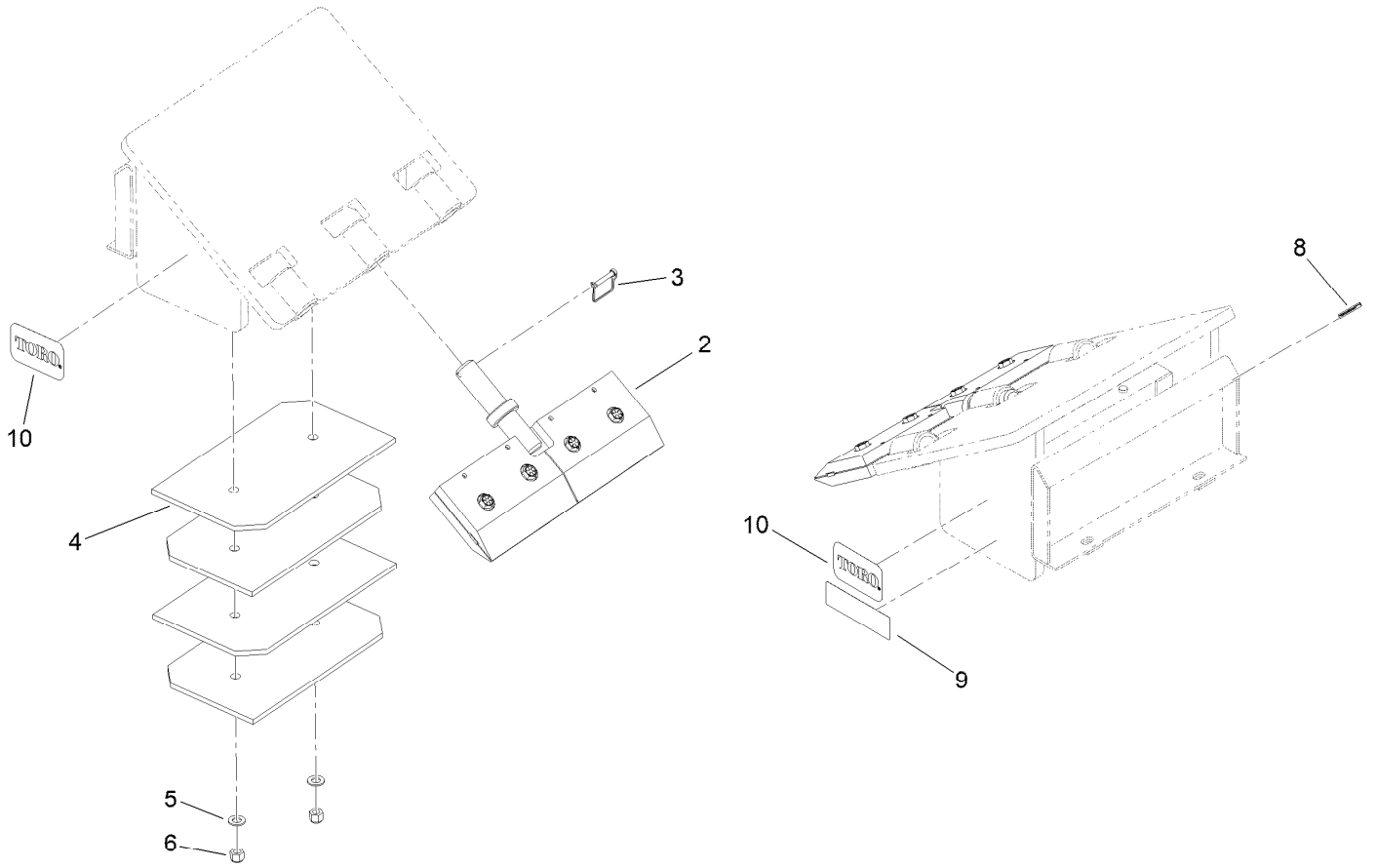
In an illustration, if a reference number indicates more than one part, the reference number has the form nX y. The n represents the quantity of the part, the X is the multiplication symbol, and the y represents the reference number.

For example, in an illustration, the reference number 2X 37 means that two of the parts identified by reference number 37 are indicated.

Contents

Floor Scraper Assembly 4
Attachments and Accessories 6

Floor Scraper Assembly



Floor Scraper Assembly (continued)

<i>Ref.</i>	<i>Part Number</i>	<i>Qty.</i>	<i>Description</i>	<i>Ref.</i>	<i>Part Number</i>	<i>Qty.</i>	<i>Description</i>
2	161-0372	1	Holder-Blade ASM	4	161-0381	4	Weight
2:1	161-0373	1	Holder-Blade Base	5	3256-28	2	Washer-Flat
2:2	145-4933	1	Clamp-Holder, 24" Blade	6	3296-51	2	Nut-Lock, NI
2:3	145-4934	1	Clamp-Holder, 24" Blade	8	133-8061	1	Decal-Warning
2:4	57-5190	4	Screw-Set, HSH	9	145-4939	1	Decal-Safety, Scraper
2:5	145-4930	4	Bolt-Blade Holder	10	105-1217	2	Decal
3	93-4696	1	Pin-Hitch				

Attachments and Accessories

For 22673 Floor Scraper e-Dingo Compact Tool Carrier

Product Name	Model/Part
12in Holder-Blade ASM	161-0391
24in Holder-Blade ASM	161-0372
Holder-Blade ASM, 3 Tooth	161-0396
Holder-Blade ASM, 6 Tooth	161-0398
Tooth-Carbide ASM (3 Pack)	161-0394
8in Blade - Scraping (5-Pack)	145-4963
12in Blade - Scraping (5-Pack)	145-4964
12in Blade-Scraping, Double-Edge (5-Pack)	145-4965
12in Blade-Scraping, Heavy Duty (5-Pack)	145-4966
24in Blade-Scraping, Double-Edge (5-Pack)	145-4967
10in Blade-Carpet, 90 Deg Wings (5-Pack)	145-4968
10in Blade-Carpet, 45 Deg Wings (5-Pack)	145-4969
22in Blade-Carpet, 90 Deg Wings (5-Pack)	145-4970
22in Blade-Carpet, 45 Deg Wings (5-Pack)	145-4971
24in Blade-Scraping (5-Pack)	145-4935
Weight	161-0381

Notes:



Count on it.