



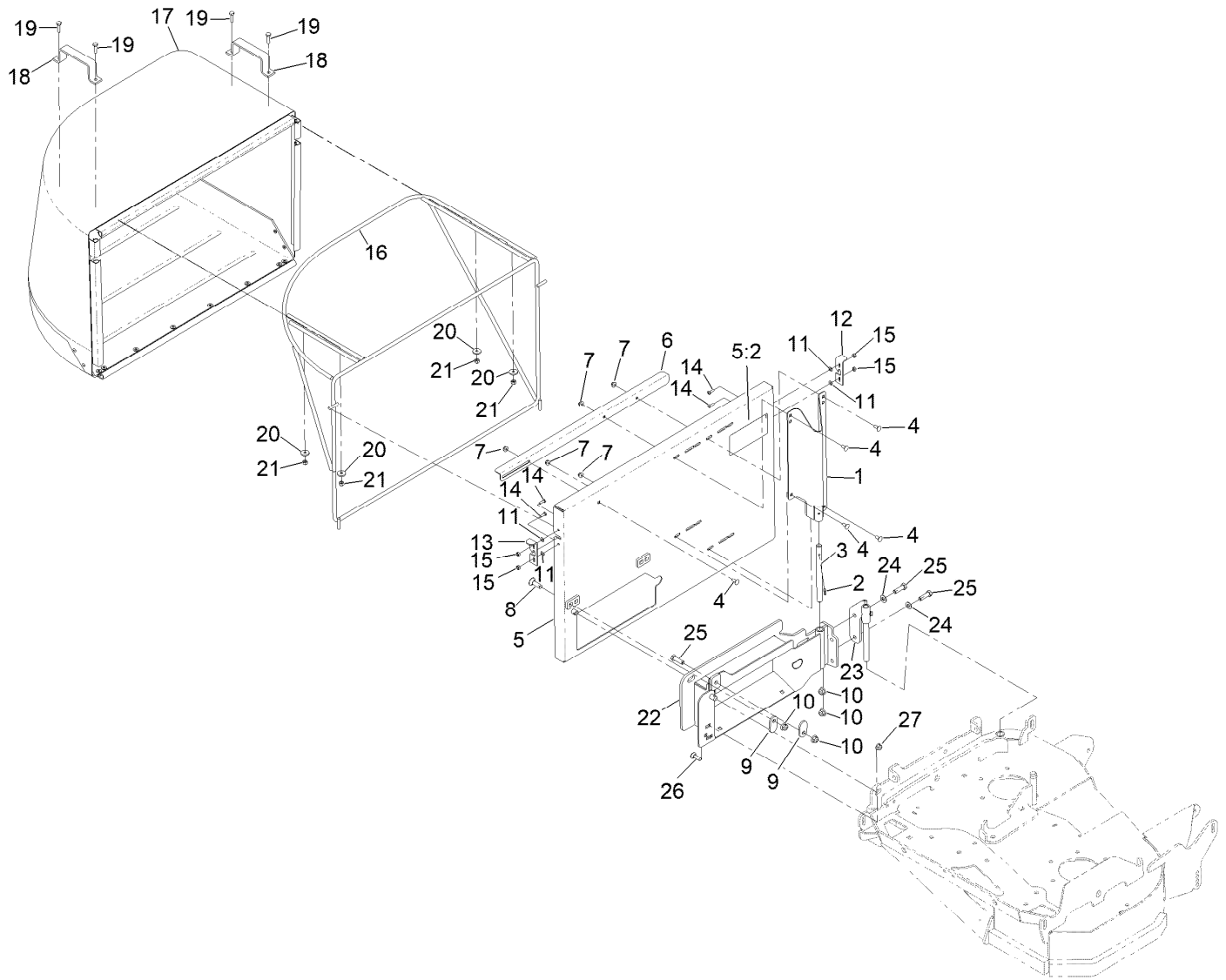
**Count on it.**

**Parts Catalog**

**3-Bushel Bagger**

Model No. 161-6831





### 3 Bushel Bagger Assembly No. 161-6831

Ref.	Part Number	Qty.	Description	Ref.	Part Number	Qty.	Description
1	116-3508-01	1	Wld-Bag Supt Channel	14	3290-500	4	Screw-PPH
2	1-806323	1	Pin-Roll	15	3296-2	4	Nut-Lock, NI
3	1-353050	1	Shaft-Catcher, Grass	16	1-352007-03	1	Frame-Catcher
4	3229-11	5	Screw-CARR	17	131-1465	1	Pan And Catcher
5	161-6830	1	Side Bag Plate W/Decal	18	1-353005-03	2	Handle
5:2	146-3842	1	Decal-Warning Thrown Objects	19	321-6	4	Screw-HH
6	116-3474-01	1	Baffle,Anti-Blowout	20	1-353029	4	Washer
7	104-7201	5	Nut-HF, NI	21	3296-42	4	Nut-Lock, NI
8	3231-25	1	Bolt-CARR	22	142-7442-01	1	Weld-Adaptor Acc.
9	1-353054	2	Latch-Catcher, Grass	23	142-7448	1	ASM-Adaptor Hanger
10	104-8301	4	Nut-HF, NI	24	3256-24	2	Washer-Plain
11	1-805500	4	Washer-Spring	25	323-7	3	Screw-HH
12	1-353012	1	Latch-Catcher, RH	26	3230-2	1	Bolt-CARR
13	1-353011	1	Latch-Catcher, LH	27	104-8300	1	Nut-HF, NI