



# 3-Bushel Bagger

Model No. 161-6831

## Installation Instructions

**Note:** Determine the left and right sides of the machine from the normal operating position.

## Safety

### Safety-Alert Symbol

The safety-alert symbol (Figure 1) shown in this manual and on the machine identifies important safety messages that you must follow to prevent accidents.



**Figure 1**

Safety-alert symbol

g000502

The safety-alert symbol appears above information that alerts you to unsafe actions or situations and is followed by the word **DANGER**, **WARNING**, or **CAUTION**.

**DANGER** indicates an imminently hazardous situation which, if not avoided, **will** result in death or serious injury.

**WARNING** indicates a potentially hazardous situation which, if not avoided, **could** result in death or serious injury.

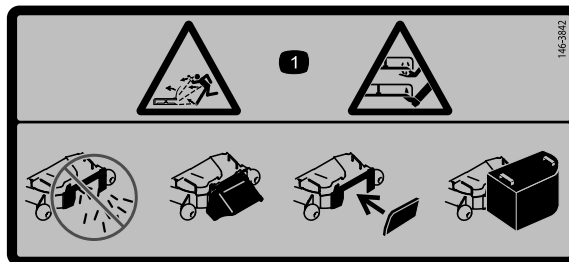
**CAUTION** indicates a potentially hazardous situation which, if not avoided, **may** result in minor or moderate injury.

This manual uses two other words to highlight information. **Important** calls attention to special mechanical information and **Note** emphasizes general information worthy of special attention.

### Safety and Instructional Decals



Safety decals and instructions are easily visible to the operator and are located near any area of potential danger. Replace any decal that is damaged or missing.



**146-3842**

decal146-3842

1. Thrown object hazard; cutting/dismemberment hazard of hand or foot, mower blade—Do not operate the machine with the discharge opening uncovered; always operate the machine with the deflector, discharge cover, or grass collection system in place.



# Installation

## Loose Parts

Use the chart below to verify that all parts have been shipped.

Procedure	Description	Qty.	Use
<b>1</b>	No parts required	–	Prepare the machine.
<b>2</b>	Side-discharge adapter Hex-head bolt (3/8 x 1-1/4 inches) Locknut (3/8 inch) Latch Adapter hanger Washer (3/8 inch) Carriage bolt (5/16 inch) Locknut (5/16 inch)	1 3 3 1 1 2 1 1	Assemble the side-discharge adapter.
<b>3</b>	Side-plate assembly Catcher latch Philips-head screw Spring washer(1/4 inch) Locknut (#10) Carriage bolt (3/8 x 1-1/4 inches) Latch Locknut (3/8 inch) Support channel Anti-blowout bracket Flanged locknut (1/4 inch) Carriage bolt (1/4 x 5/8 inch) Support shaft Mounting pin	1 2 4 4 4 1 1 1 1 1 5 5 1 1	Assemble the side plate.
<b>4</b>	No parts required	–	Install the side plate to the deck.
<b>5</b>	Bag and pan Catcher frame Handle Hex-head bolt (1/4 x 1 inch) Locknut (1/4 inch) Washer (1/4 inch)	1 1 2 4 4 4	Assemble the bag and frame.
<b>6</b>	No parts required	–	Finish the bagger.

# 1

## Preparing the Machine

No Parts Required

### Procedure

1. Park the machine on a level surface.
2. Disengage the drives and engage the parking brake.
3. Shut off the engine and remove the ignition key.
4. Wait for all moving parts to stop.
5. Allow machine components to cool before performing maintenance.
6. Disconnect the negative battery cable.
7. If applicable, lower the platform.
8. Lift and lock the thigh pad into place.

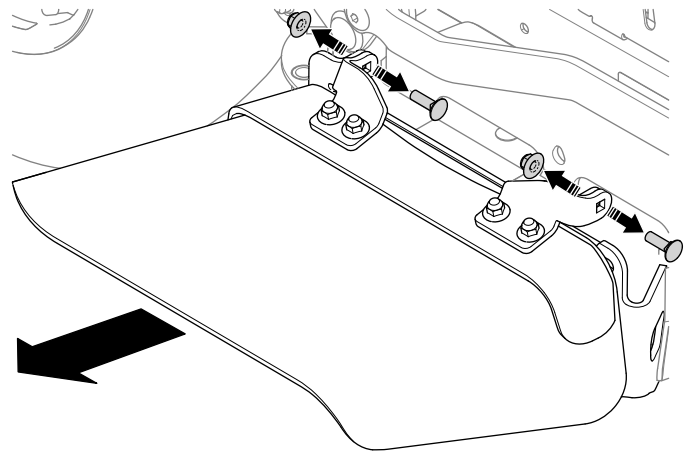


Figure 2

g480015

### **▲ DANGER**

An uncovered discharge opening will allow objects to be thrown in an operator's or bystander's direction. Also, contact with the blade could occur. Thrown objects or blade contact can cause serious injury or death.

Never operate the mower with the discharge deflector raised, removed, or altered unless there is a grass collection system or mulch kit in place and working properly.

2. Assemble the side-discharge adapter as shown in [Figure 3](#).

**Note:** Do not completely tighten the fasteners securing the latch; the latch should be able to rotate freely.

# 2

## Assembling the Side-Discharge Adapter

Parts needed for this procedure:

1	Side-discharge adapter
3	Hex-head bolt (3/8 x 1-1/4 inches)
3	Locknut (3/8 inch)
1	Latch
1	Adapter hanger
2	Washer (3/8 inch)
1	Carriage bolt (5/16 inch)
1	Locknut (5/16 inch)

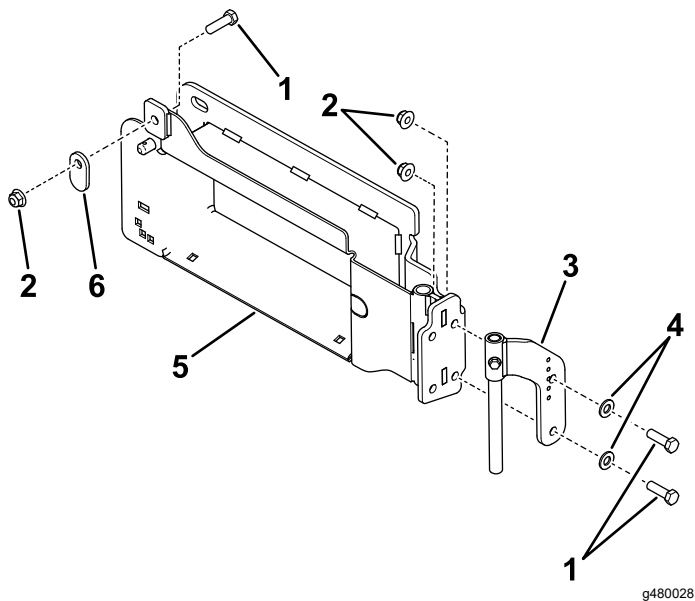
### Procedure

1. Remove the side-discharge deflector from the deck ([Figure 2](#)).

**Important:** Retain all removed hardware.

# 3

## Assembling the Side Plate

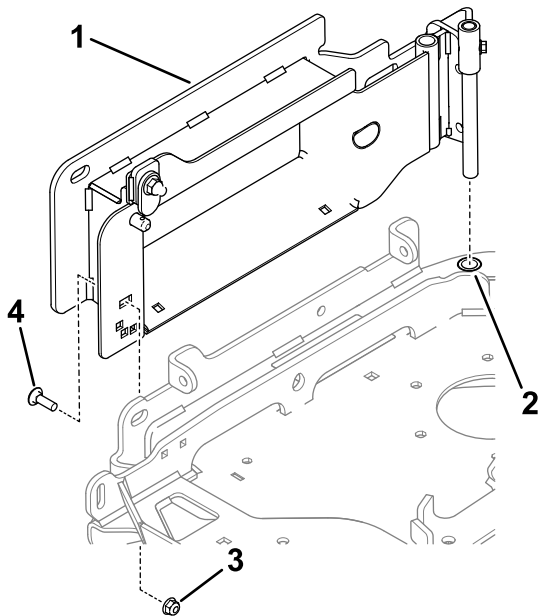


**Figure 3**

g480028

- |                                       |                           |
|---------------------------------------|---------------------------|
| 1. Hex-head bolt (3/8 x 1-1/4 inches) | 4. Washer (3/8 inch)      |
| 2. Locknut (3/8 inch)                 | 5. Side-discharge adapter |
| 3. Adapter hanger                     | 6. Latch                  |

- Lower the side-discharge adapter into the hole welded into the rear of the deck. Secure using a carriage bolt and locknut through the side of the deck (Figure 4).



**Figure 4**

g480030

- |                           |                              |
|---------------------------|------------------------------|
| 1. Side-discharge adapter | 3. Locknut (5/16 inch)       |
| 2. Mounting hole          | 4. Carriage bolt (5/16 inch) |

- Rotate the latch from step 2 downward and tighten securely to hold the adapter in place.

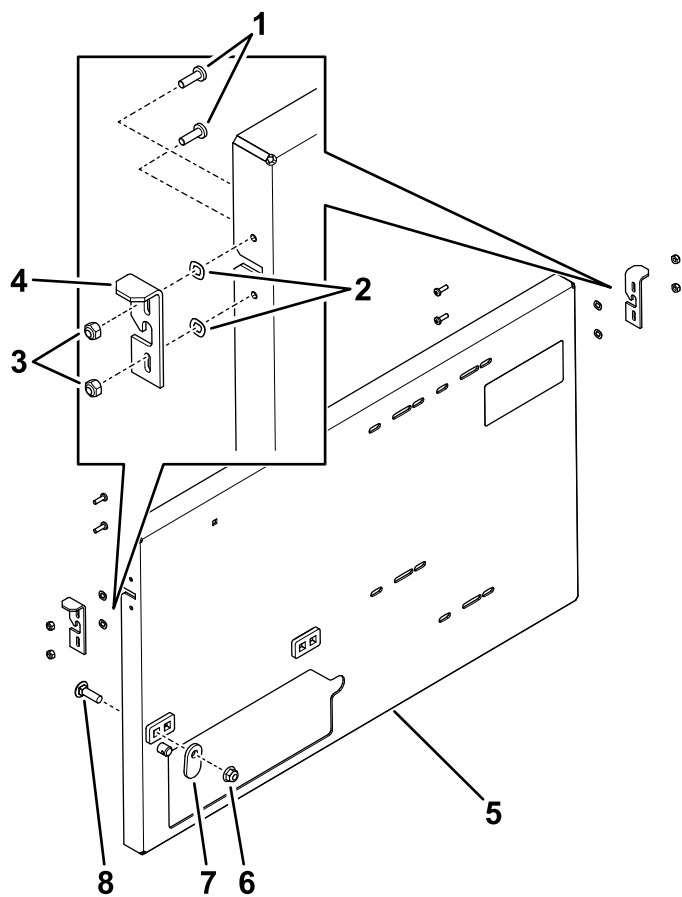
### Parts needed for this procedure:

1	Side-plate assembly
2	Catcher latch
4	Phillips-head screw
4	Spring washer(1/4 inch)
4	Locknut (#10)
1	Carriage bolt (3/8 x 1-1/4 inches)
1	Latch
1	Locknut (3/8 inch)
1	Support channel
1	Anti-blowout bracket
5	Flanged locknut (1/4 inch)
5	Carriage bolt (1/4 x 5/8 inch)
1	Support shaft
1	Mounting pin

### Procedure

- Install the left and right catcher latches to the sides of the side-plate assembly using Phillips head screws, spring washers, and locknuts as shown in Figure 5.

**Note:** Do not completely tighten the fasteners; the latches should be able to move up and down freely.



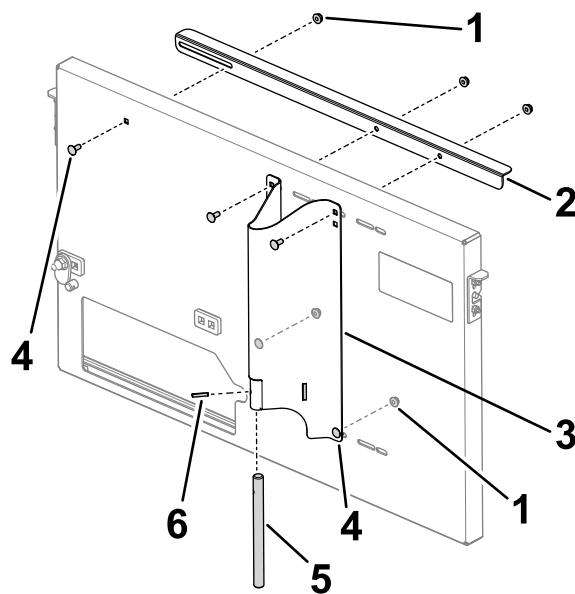
**Figure 5**

- |                             |                                       |
|-----------------------------|---------------------------------------|
| 1. Phillips-head screw      | 5. side-plate assembly                |
| 2. Spring washer (1/4 inch) | 6. Locknut (3/8 inch)                 |
| 3. Locknut (#10)            | 7. Front latch                        |
| 4. Catcher latch            | 8. Carriage bolt (3/8 x 1-1/4 inches) |

2. Install the front latch to the side plate using a carriage bolt (3/8 x 1-1/4 inches) and a locknut (3/8 inch) as shown in [Figure 5](#).

**Note:** Do not completely tighten the fasteners; the latch should be able to rotate freely.

3. Secure the anti-blowout bracket and the support channel to the side plate using 5 carriage bolts (1/4 x 5/8 inch) and 5 flanged locknuts (1/4 inch) as shown in [Figure 6](#).



**Figure 6**

g484936

- |                               |                                       |
|-------------------------------|---------------------------------------|
| 1. Flanged locknut (1/4 inch) | 4. Carriage bolt (1/4 x 5/8 inch) [5] |
| 2. Anti-blowout bracket       | 5. Support shaft                      |
| 3. Support channel            | 6. Mounting pin                       |

4. Insert the support shaft into the support channel and secure with the mounting pin ([Figure 6](#)).

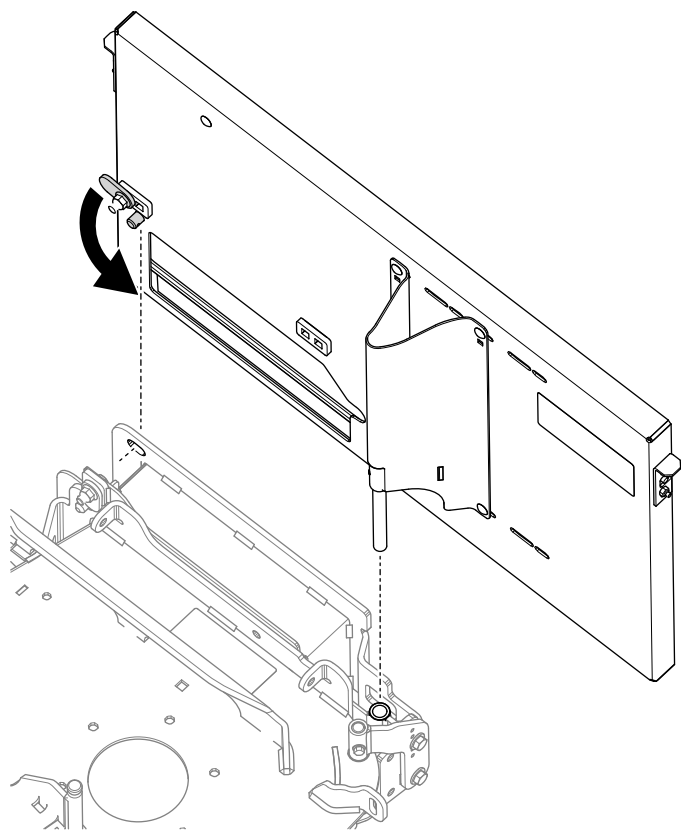
# 4

## Installing the Side Plate to the Deck

**No Parts Required**

### Procedure

1. Lower the side plate into the tube on the adapter ([Figure 7](#)).



**Figure 7**

g484939

2. Insert the front pin of the side plate into the slot in the adapter. Rotate the front latch downward to lock the bagger in place (Figure 7).

# 5

## Assembling the Bag and Frame

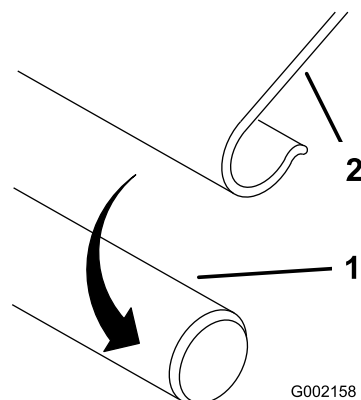
### Parts needed for this procedure:

1	Bag and pan
1	Catcher frame
2	Handle
4	Hex-head bolt (1/4 x 1 inch)
4	Locknut (1/4 inch)
4	Washer (1/4 inch)

### Procedure

1. Slide the upper curved portion of the bagger frame into the bag and the long straight rod down toward the pan.

2. Snap the J-strips over the frame rods (Figure 8).



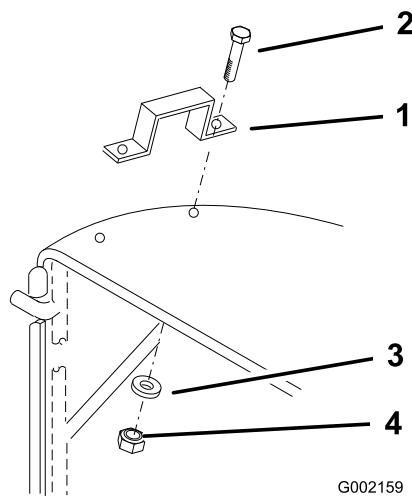
**Figure 8**

G002158

g002158

1. Rod
2. J-strip

3. Arrange the bag around the frame.
4. Place the handles over the slots on each side of the frame.
5. Push 2 hex-head bolts (1/4 x 1 inch) through each handle and the fabric from the outside, and secure them with 4 washers (1/4 inch) and locknuts (1/4 inch) as shown in Figure 9.



**Figure 9**

G002159

g002159

1. Handle
2. Hex-head bolt (1/4 x 1 inch)
3. Washer (1/4 inch)
4. Locknut (1/4 inch)

# 6

## Finishing the Bagger

No Parts Required

### Procedure

1. Insert the lower pins of the bagger frame into the holes on the back plate (Figure 10).
2. Lift the latches and slide the frame side pins into them (Figure 10).
3. Lower the latches to secure the bagger.

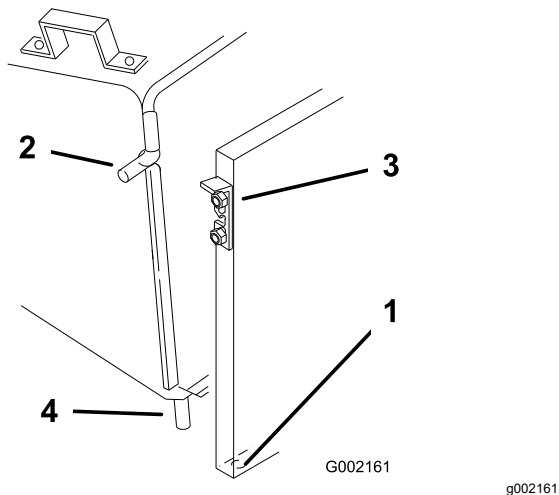


Figure 10

- |                     |              |
|---------------------|--------------|
| 1. Back-plate holes | 3. Latch     |
| 2. Frame pin        | 4. Lower pin |

**Important:** If the grass catcher is removed from the machine, reinstall and flip down the discharge deflector before using mower for side discharge.

## Operation

### ⚠ WARNING

To avoid personal injury, follow these procedures:

- Become familiar with all operating and safety instructions in the *Operator's Manual* for your machine before using this attachment.
- Before doing any of the following procedures or leaving the operator's position:
  - Disengage the machine PTO, move the motion control levers to the neutral locked position, and set the machine parking brake.
  - Shut off the engine, remove the key, and wait for all moving parts to stop.
- Do not remove the bag while the engine is running.
- Always shut off the engine, wait for all moving parts to stop, and remove the key before clearing an obstruction from the bagging system.
- Do not do maintenance or repairs while the engine is running.

## Removing the Bagger from the Machine

1. Disengage the machine PTO, move the motion control levers to the neutral locked position, and set the machine parking brake.
2. Shut off the engine, remove the key, and wait for all moving parts to stop before leaving the operating position.
3. Lift the latches and remove and empty the grass bag.
4. Lift the back plate off of the mower.
5. Lower the grass deflector back into place.

## Emptying the Bagger

1. Disengage the PTO, bring the machine to neutral position, and set the parking brake.
2. Shut off the engine, remove the key, and wait for all moving parts to stop before leaving the operating position.
3. Lift the latches and remove and empty the grass bag.
4. Insert the lower pins of the bagger frame into the holes in the back plate (Figure 10).
5. Lift the latches and slide the frame side pins into them (Figure 10).
6. Lower the latches to secure the bagger.

## Clearing Obstructions

### **⚠ WARNING**

**When the machine is in operation, the blade can be rotating and cut off or injure hands.**

- **Before adjusting, cleaning, repairing and inspecting the blower, or unclogging the chute, shut off the engine, wait for all moving parts to stop, and remove the key.**
- **Use a stick, not your hands, to remove an obstruction from the blower and tube.**
- **Keep your face, hands, feet, and any other part of your body or clothing away from concealed, moving, or rotating parts.**

1. Disengage the PTO, move the motion control levers to the neutral locked position and set the parking brake.
2. Shut off the engine, remove the key, and wait for all moving parts to stop before leaving the operating position.
3. Lift the latches and remove and empty the grass bag.
4. Use a stick or similar object, not your hands, to remove and clear the obstruction from the mower.
5. Insert the lower pins of the bagger frame into the holes in the back plate (Figure 10).
6. Lift the latches and slide the frame side pins into them (Figure 10).
7. Lower the latches to secure the bagger.

## Operating Tips

### Mower Width

The mower is wider with the bagger installed. By turning too sharply in confined places, you may damage the bagger.

### Mowing Side

Mow with the left side towards objects such as trees or landscaping. Do not mow with the right side of the mower near objects, as you could damage the bagger.

### Mowing Rough Terrain

When mowing rough or uneven terrain, use care to avoid damaging the bagger against the turf.

### Avoid Cutting Too Low

Air flow is required to cut grass and propel it into the bag. Setting the height of cut too low, especially in heavy or long grass, can restrict the air flow and plug the mower or grass catcher.

### Avoid Plugging

To avoid plugging when cutting long grass, double-cut the grass, first at a high height-of-cut and then lower the mower to the desired setting. Also, try to leave one side of the mower out of the uncut grass, allowing air to be drawn into the mower housing.



# Maintenance

## ⚠ CAUTION

If you leave the key in the ignition switch, someone could accidentally start the engine and seriously injure you or other bystanders.

Remove the key from the ignition and disconnect the wire from the spark plug before you do any maintenance. Set the wire aside so that it does not accidentally contact the spark plug.

## ⚠ DANGER

Engines can become hot when they are operating. Severe burns can occur from contacting hot surfaces.

Allow engines, especially the muffler, to cool before touching.

## ⚠ DANGER

Debris, such as leaves, grass, or brush can catch fire. A fire in the engine area can cause personal injury and property damage.

- Keep the engine and muffler area free of debris accumulation.
- Take care when opening the bagger cover to keep debris from falling onto the engine and muffler area.
- Allow the machine to cool before storing it.

## Inspecting the Bagger

**Service Interval:** After the first 10 hours

Before storage

1. Inspect all the fasteners and latches; replace any that are missing or damaged.
2. Inspect the bag for damage and replace any damaged parts.
3. Tighten all hardware.

## ⚠ WARNING

You or bystanders could be severely injured by flying debris or thrown objects that may pass through torn, worn, or deteriorated grass bags.

- Check the grass bags for holes, rips, wear, and other deterioration.
- If the bag has deteriorated, install new grass bags supplied by the manufacturer of this bagger attachment.

## Cleaning the Bagger

**Service Interval:** Before each use or daily

Clean the bagger after each use.

1. Remove the bag and wash the back plate and the underside of the mower. Use a mild automotive detergent to remove stubborn dirt.

**Important:** Do not pressure wash the bagger.

2. Remove matted grass from all parts.
3. After washing, let all parts dry thoroughly.

**Note:** Do not wash the grass bags.

## Storing the Grass Catcher

1. Clean the bagger; refer to [Cleaning the Bagger \(page 9\)](#).
2. Inspect the bagger for damage; refer to [Inspecting the Bagger \(page 9\)](#).
3. Ensure that the bag is empty and dry.
4. Store the bagger in a clean, dry place out of direct sunlight. This extends the life of the bagger. If you must store it outside, cover it with a weatherproof cover.

**Notes:**

**Notes:**



**Count on it.**