



Count on it.

Parts Catalog

Electric Ultra Buggy®

Model No. 68037—Serial No. 40000000 and Up



Ordering Replacement Parts

To order replacement parts, please supply the part number, the quantity, and the description of each part desired.

Understanding Reference Numbers

Each identified part in an illustration has a reference number. The reference number for a part also appears in the parts list, along with other information about the part.

This catalog uses two special reference number formats, one to indicate parts in a service assembly and another to indicate the quantity of a given part in an illustration.

Service Assembly Reference Numbers

Parts in service assemblies have reference numbers in the form a:b. The a represents the reference number of the entire service assembly and the b represents a sequential number unique to each part within the service assembly.

For example, a wheel assembly might be identified by reference number 6, the tire by 6:1, the valve by 6:2, and the wheel by 6:3. When you order the assembly identified by reference number 6, you receive all parts identified by reference numbers 6:1, 6:2, and 6:3. However, you may also order any part individually. Reference numbers of this type appear in illustration and in parts lists.

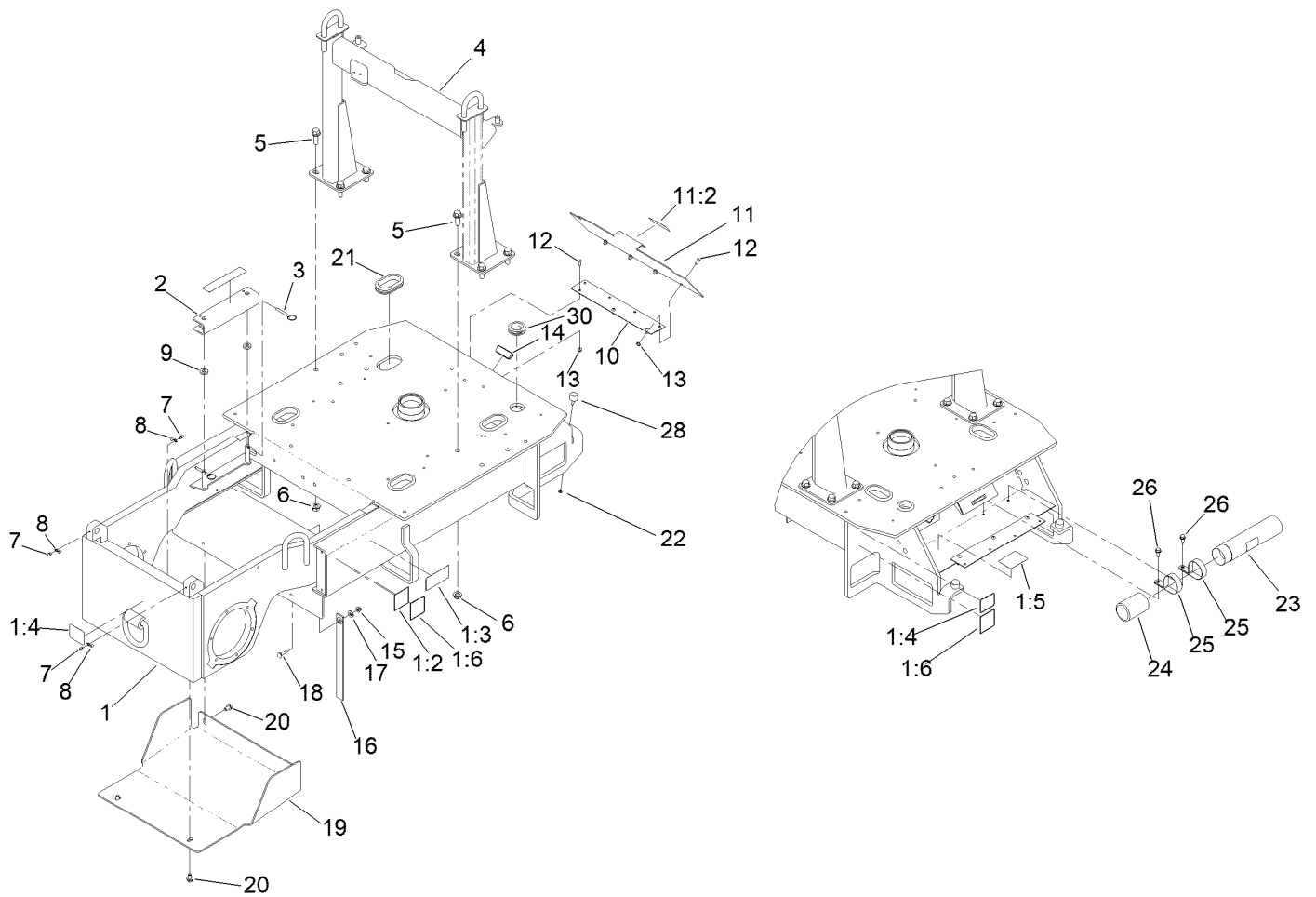
Reference Numbers Indicating Quantity

In an illustration, if a reference number indicates more than one part, the reference number has the form nX y. The n represents the quantity of the part, the X is the multiplication symbol, and the y represents the reference number.

For example, in an illustration, the reference number 2X 37 means that two of the parts identified by reference number 37 are indicated.

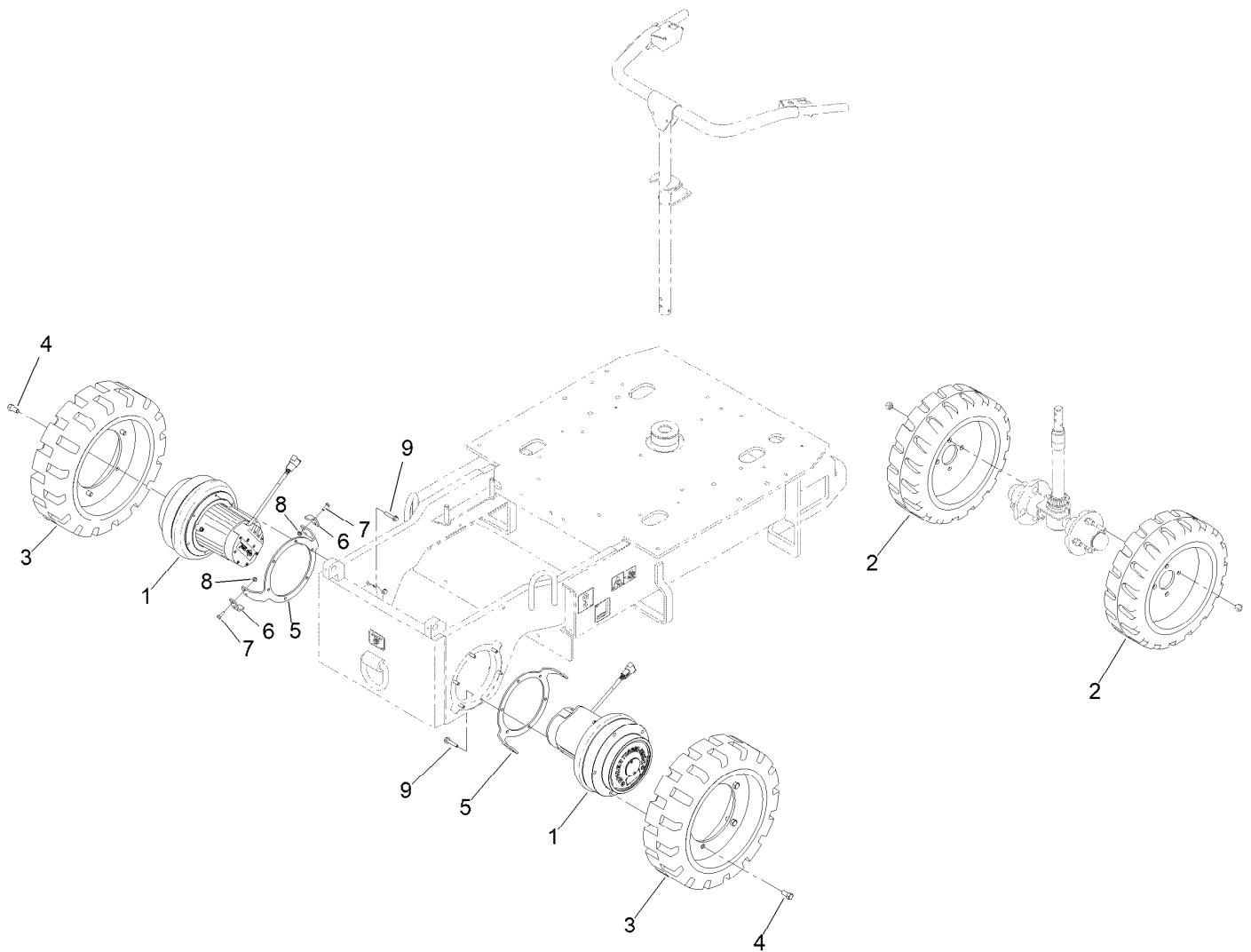
Contents

Frame Assembly.....	4
Drivetrain and Wheel Assembly.....	5
Platform Assembly.....	6
Handle Assembly.....	7
Steering Assembly.....	8
Tower and Hood Assembly.....	9
Tub Assembly.....	10
Battery Assembly.....	11
Harness Assembly.....	12
Battery Cable Assembly.....	14
Attachments and Accessories.....	15



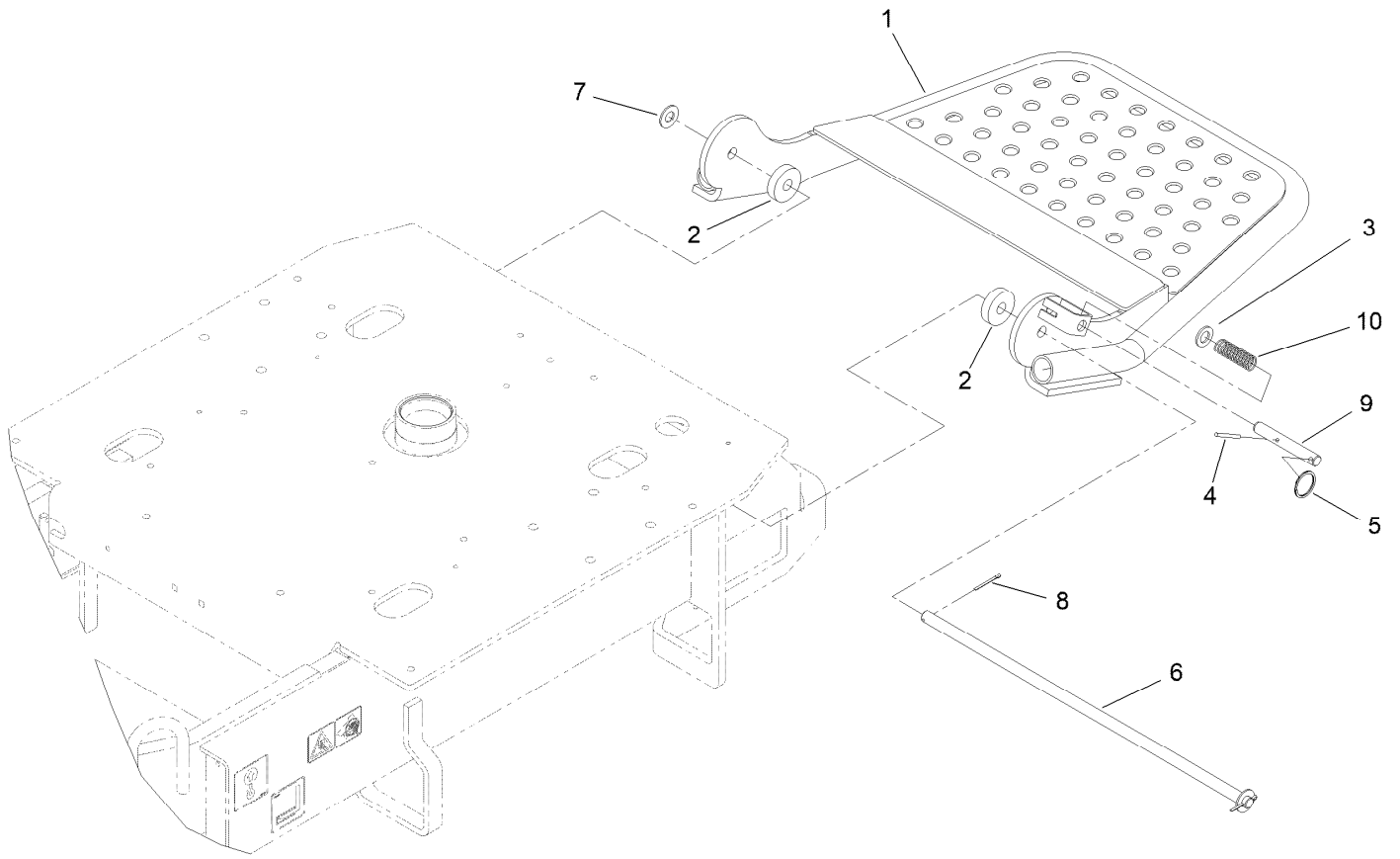
Frame Assembly

Ref.	Part Number	Qty.	Description	Ref.	Part Number	Qty.	Description
1	147-3218	1	Frame ASM	12	3274-31	7	Screw-HSBH
1:2	125-4967	2	Decal-Lift Here	13	104-7201	7	Nut-HF, NI
1:3	125-4959	2	Decal-Warning, Crushing	14	99-3497	1	Magnet
1:4	125-6694	3	Decal-Tie Down	15	104-8300	1	Nut-HF, NI
1:5	145-1170	1	Decal-Warning, Charger	16	139-7731	1	Strap, Static
1:6	145-1181	4	Decal-Forklift Pocket	17	3256-3	1	Washer-Flat
2	144-1704	1	Cylinder Locking ASM	18	3230-3	1	Screw-CARR
3	108-0094	2	Pin-Cotterless	19	144-1788-03	1	Plate-Skid
4	144-1677-03	1	Frame Lift ASM-Welded	20	32144-69	4	Screw-HWHTF
5	100-6116	8	Screw-HHF	21	145-4923	4	Grommet
6	99-5107	8	Nut-Lock	22	3296-56	2	Nut-Lock, NI
7	302-5	4	Fitting-Grease	23	104-7050	1	Tube-Manual
8	ST47001	4	Cap-Plug	24	104-7048	1	Cap-Housing
9	83-1470	2	Washer-Neoprene	25	2412-133	2	Clamp-R
10	132-9021	1	Hinge-Hood	26	32144-70	2	Screw-HWHTF
11	147-3224	1	Cover-Cable	28	1-523420	2	Bumper
11:2	145-1174	1	Decal-Battery Charger	30	137-1812	1	Grommet



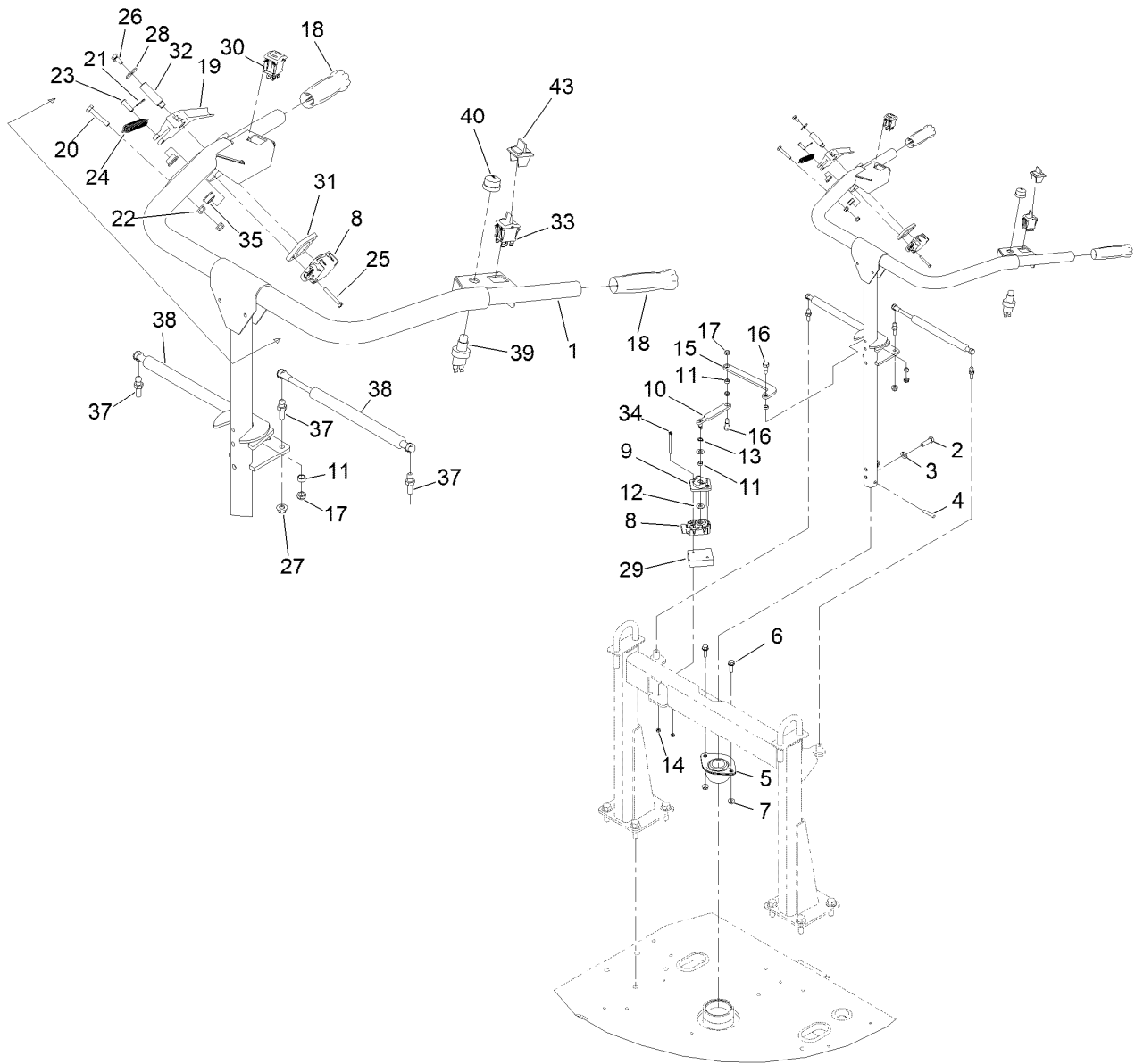
Drivetrain and Wheel Assembly

Ref.	Part Number	Qty.	Description
1	138-8975	2	Motor/Gen Torque-Hub ASM-3Kw 31:1 Rdctn
2	145-4938	2	Tire-Solid
3	145-2376	2	Tire-Solid
4	144-1739	10	Screw-HH, Lug M12 X 1.50
5	145-4984-03	2	Spacer-Wheel
6	145-4990	4	Plate-Wiper
7	321-4	8	Screw-HH
8	104-7201	8	Nut-HF, NI
9	33104-040	12	Screw-HHF



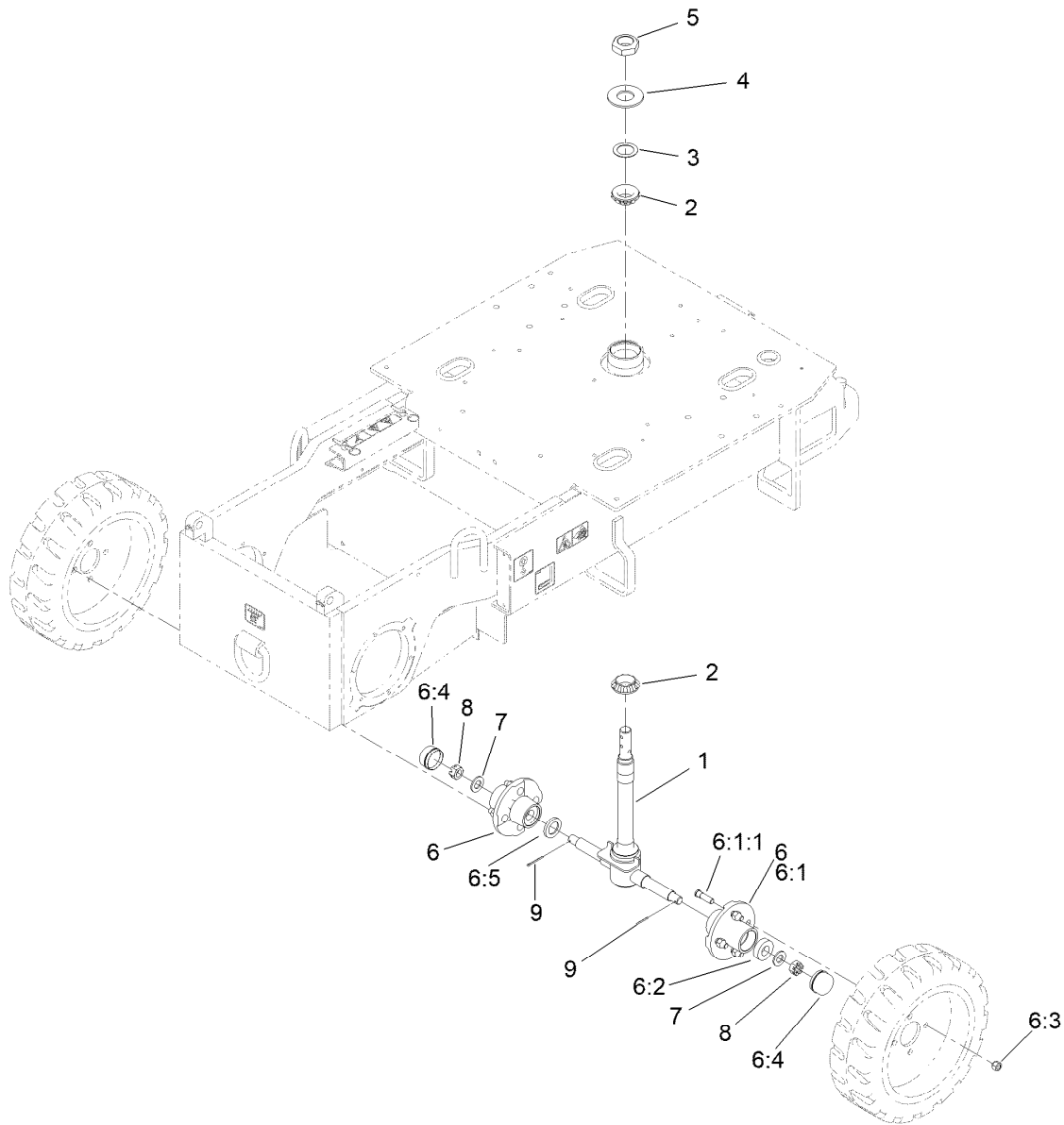
Platform Assembly

<i>Ref.</i>	<i>Part Number</i>	<i>Qty.</i>	<i>Description</i>
1	144-1722-03	1	Step-Platform-Welded
2	144-1725	2	Spacer
3	33098-00	1	Washer-Flat
4	ST81122	1	Pin
5	ST81124	1	Ring-Split
6	ST45113	1	Shaft-Pivot, Step
7	3256-27	2	Washer-Flat
8	3272-13	2	Pin-Cotter
9	144-1721	1	Pin-Lockout, Step
10	ST45055	1	Spring-Compression



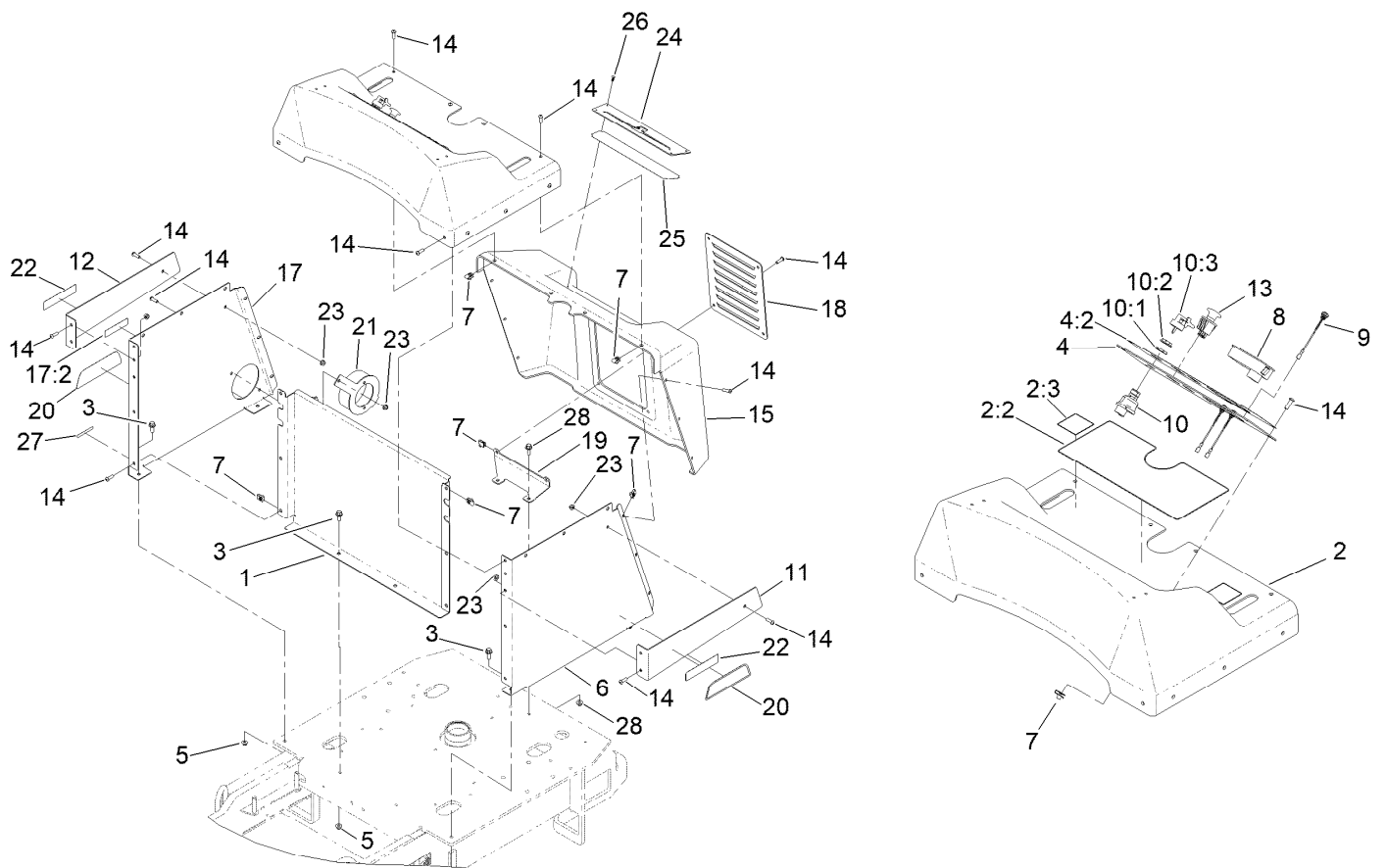
Handle Assembly

Ref.	Part Number	Qty.	Description	Ref.	Part Number	Qty.	Description
1	145-3199-03	1	Handle ASM [black]	21	3272-1	1	Pin-Cotter
2	323-7	2	Screw-HH	22	119-4040	2	Nut-HF, NI
3	100-4852	2	Washer-Hardened	23	1-808265	1	Pin-Clevis
4	ST80309	1	Pin	24	137-2591	1	Spring-Extension
5	ST45930	1	Spherical Bearing ASM	25	32105-1	2	Screw-SHH
6	3234-29	2	Screw-HHF	26	119-1065	1	Screw-HWH
7	32128-26	2	Nut-HF	27	104-8300	2	Nut-HF, NI
8	122-0917	2	Sensor-Position	28	137-3106	1	Washer-Plain
9	144-1731	1	Mount-Linkage	29	144-7124-0P	1	Spacer, Steering-Sensor
10	144-1728	1	Linkage ASM	30	145-1152	1	Switch-Directional
11	120-9708	5	Bushing	31	144-1729-0P	1	Plate-Mount, Linkage
12	132-4593	2	Washer	32	145-1153	1	Shaft-Sensor
13	105-2410	1	Ring-Retaining	33	MSC13973	1	Switch,(On)Off(On),Pinned,CB
14	120-9659	2	Nut-Lock, NI	34	32105-30	2	Screw-SHH
15	144-1734	1	Linkage-Steering	35	145-1154	2	Bushing
16	59-5400	2	Bolt-Shoulder	37	145-4951	4	Stud-Ball
17	3296-47	2	Nut-Lock,NI	38	145-4921	2	Damper-Gas
18	T62021010	2	Grip-Vinyl, Black	39	112-3324	1	Switch-Horn
19	144-7153	1	Handle	40	112-3313	1	Nut-Weatherproof
20	321-43	1	Capscrew	43	MSC13972	1	Boot,K2 Paddle Switch



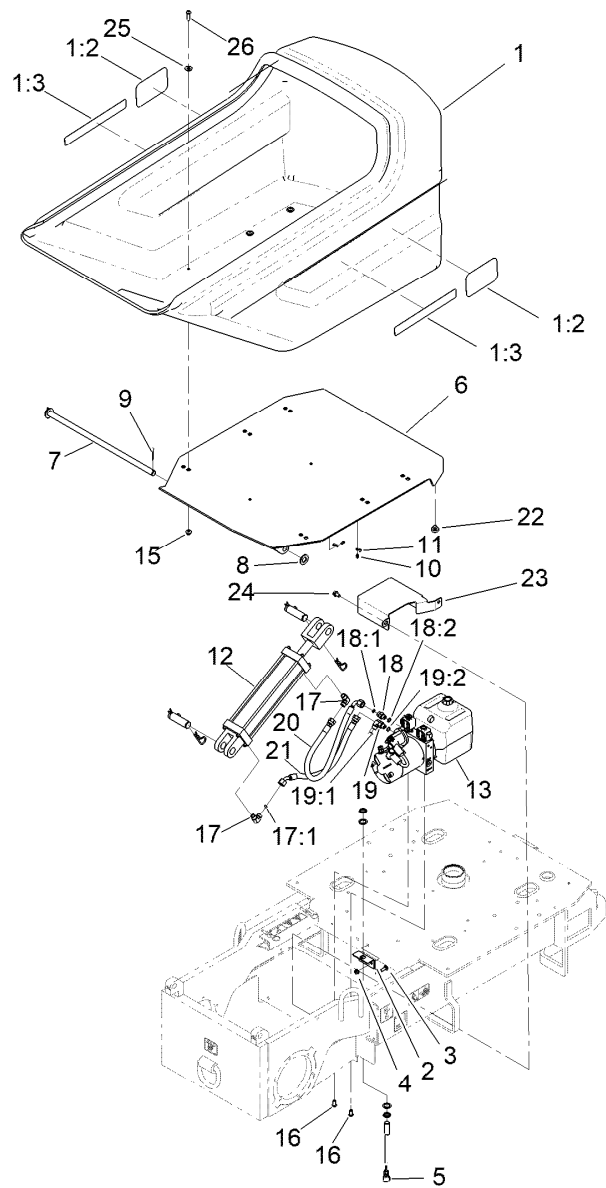
Steering Assembly

Ref.	Part Number	Qty.	Description
1	145-4992-0P	1	Axle-Steering [primed]
2	ST32161	2	Bearing-Roller
3	ST81109	1	Washer-Thrust
4	ST36934	1	Plate-Cover, Bearing
5	ST81108	1	Nut
6	139-1328	2	Hub ASM
6:1	139-1327	1	Hub-4In
6:1:1	ST39190	4	Stud-Wheel
6:2	ST32233	2	Bearing-Roller
6:3	ST80045	4	Nut-Lug
6:4	ST34573	1	Cap-Dust
6:5	ST32052	1	Seal-Hub, Wheel
7	3256-28	2	Washer-Flat
8	ST80054	2	Nut
9	3272-13	2	Pin-Cotter



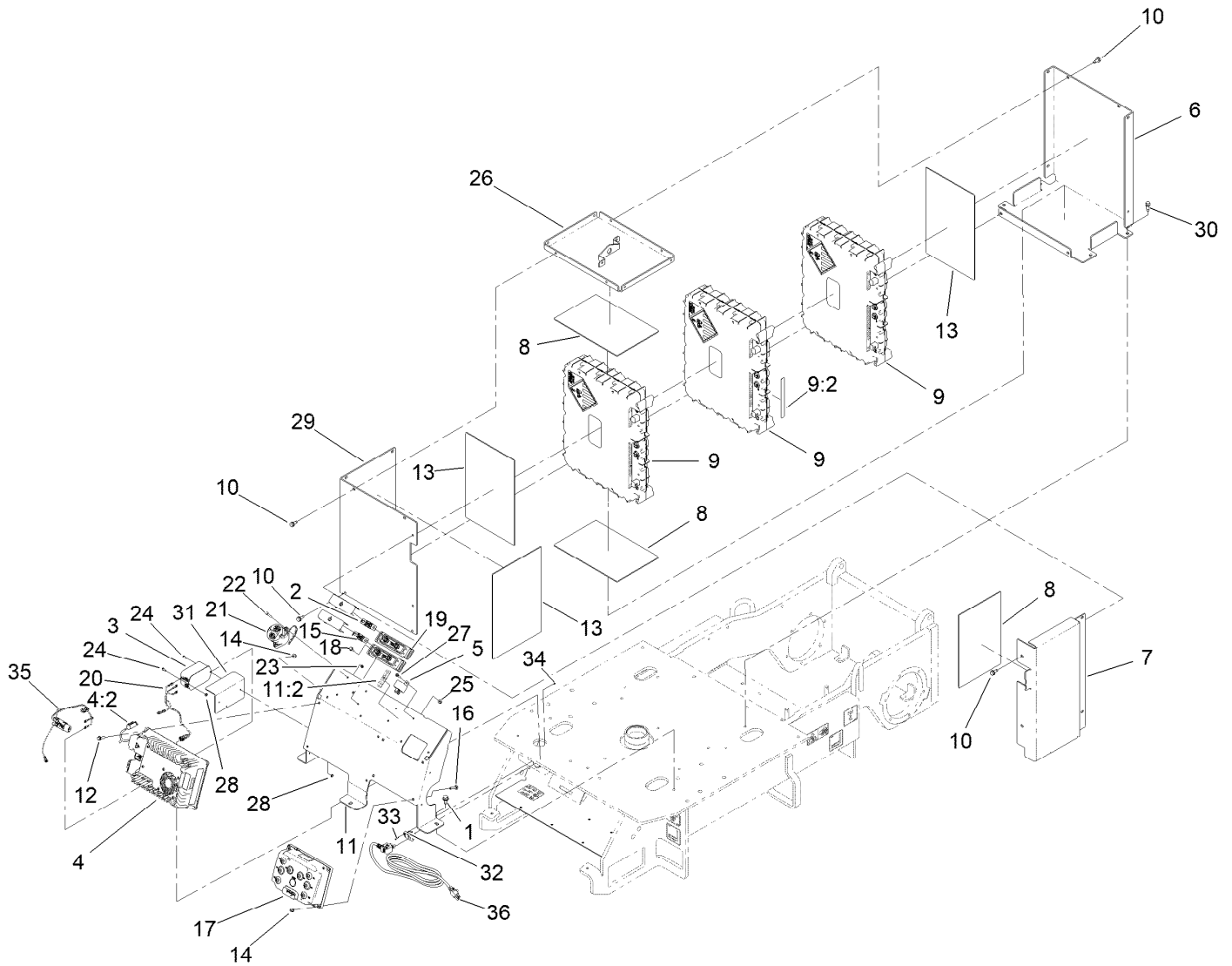
Tower and Hood Assembly

<i>Ref.</i>	<i>Part Number</i>	<i>Qty.</i>	<i>Description</i>	<i>Ref.</i>	<i>Part Number</i>	<i>Qty.</i>	<i>Description</i>
1	144-1652-03	1	Panel-Tower,Front	12	145-4986-03	1	Plate-Decal [black]
2	147-3219	1	Dash Panel ASM	13	136-6888	1	Switch, E-Stop
2:2	145-1168	1	Decal-Control Panel	14	109-4872	38	Screw-HSH
2:3	125-4967	2	Decal-Lift Here	15	144-1773	1	Hood
3	3234-42	6	Screw-HHF	17	147-3221	1	Access Panel ASM, RH
4	147-3220	1	Display Cover ASM	17:2	145-1175	1	Decal-Service, Shut-Off
4:2	145-1169	1	Decal-Control Panel	18	144-1735-03	1	Cover-Access, Bms
5	119-4042	6	Nut-HF, NI	19	144-1774-03	1	Bracket-Hood
6	144-1662-01	1	Panel-Access, LH	20	145-1172	2	Decal-Hypercell
7	94-2413	30	Nut-U	21	147-3208-03	1	Bracket-Disconnect [black]
8	122-2152	1	Controller, Tdm-1601	22	145-1171	2	Decal-E2500
9	136-9678	3	Switch-Pushbutton	23	104-8300	8	Nut-HF, NI
10	122-2513	1	Switch-Ignition, Suns	24	147-3203-03	1	Plate-Logo
10:1	121-5160	1	Nut-Hex	25	145-1184	1	Decal-Backer, Red
10:2	122-2704	1	Nut-Face, M22 (Plastic)	26	3269-28	4	Rivet-Pop
10:3	121-5162	1	Set-Key, Ignition	27	133-8061	1	Decal-Warning
11	145-4985-03	1	Plate-Decal [black]	28	32144-14	2	Screw-HWHTF



Tub Assembly

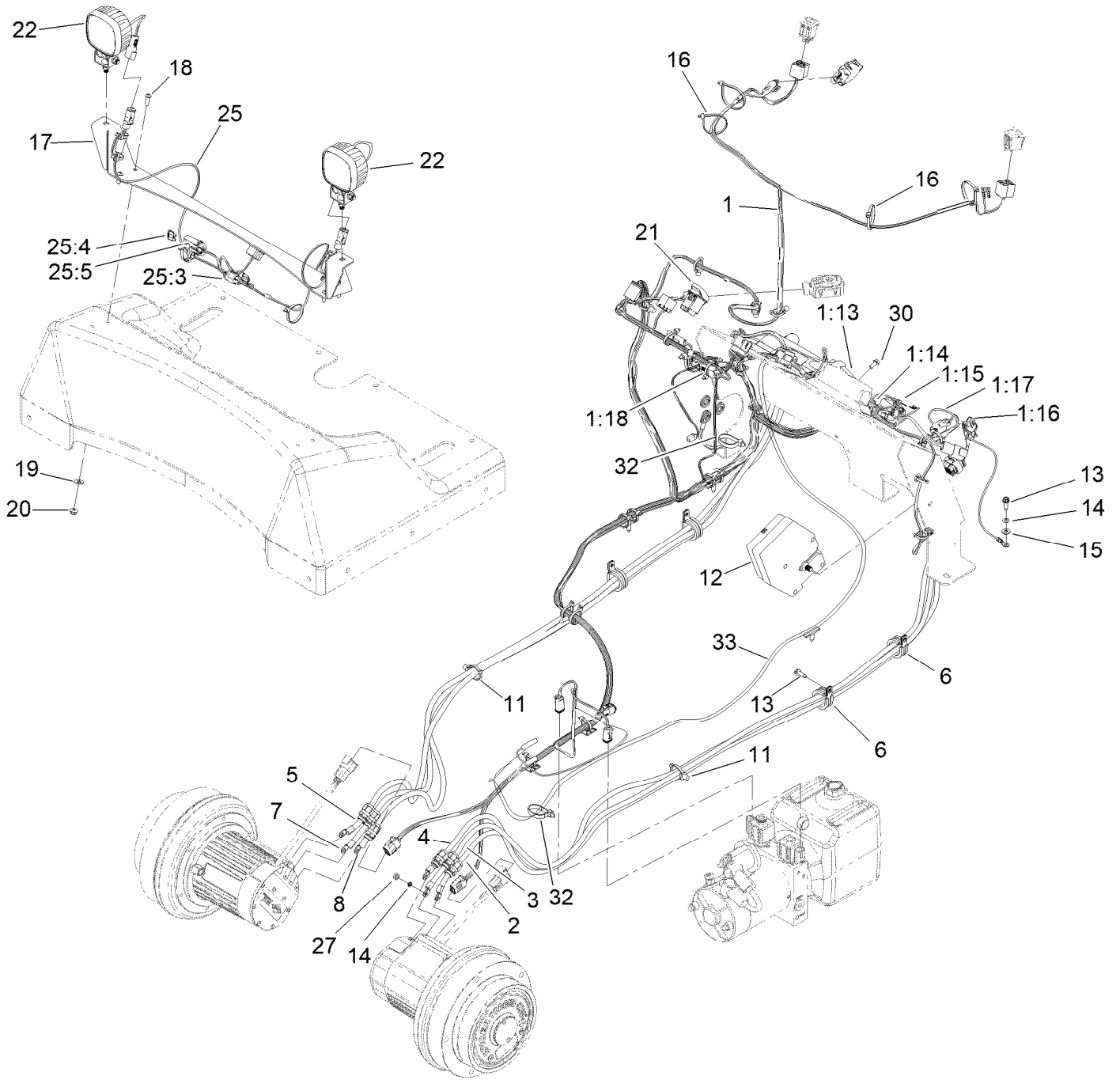
<i>Ref.</i>	<i>Part Number</i>	<i>Qty.</i>	<i>Description</i>	<i>Ref.</i>	<i>Part Number</i>	<i>Qty.</i>	<i>Description</i>
1	144-1762	1	Mortar Hopper ASM	16	3274-80	2	Screw-HH
1:2	105-1217	2	Decal	17	340-112	2	Fitting-Elbow, 90
1:3	139-7237	2	Decal - E-Mud Buggy	17:1	237-22	1	O-Ring
2	144-1706	1	Bracket-Switch	18	340-2	1	Fitting-Straight
3	3230-2	2	Bolt-CARR	18:1	237-22	1	O-Ring
4	104-8300	2	Nut-HF, NI	18:2	237-42	1	O-Ring
5	139-7238	1	Sensor-Proximity, N.O.	19	340-77	1	Fitting-Elbow, 90 DEG
6	144-1698-03	1	Dump Bin Frame ASM-Welded	19:1	237-22	1	O-Ring
7	144-1709	1	Shaft-Dump Pivot	19:2	237-42	1	O-Ring
8	3256-28	2	Washer-Flat	20	144-1736	1	Hose ASM-HYD
9	3272-13	2	Pin-Cotter	21	144-1737	1	Hose ASM-HYD
10	302-5	3	Fitting-Grease	22	140-3460	2	Bumper-Rubber
11	ST47001	3	Cap-Plug	23	147-3217-03	1	Cover-Contactor
12	ST50501	1	HYD Cylinder ASM	24	32144-69	2	Screw-HWHTF
13	144-1716	1	Pump Unit-48 Vdc	25	3256-4	6	Washer-Flat
15	104-8301	6	Nut-HF, NI	26	3274-63	6	Screw-HSBH



Battery Assembly

Ref.	Part Number	Qty.	Description	Ref.	Part Number	Qty.	Description
1	110-9380	3	Screw-HWH	18	32144-4	4	Screw-HWH
2	122-2561	1	Fuse-200A	19	145-4958	2	Holder-Fuse
3	147-3225	1	Filter	20	122-2745	1	Harness-Wire, AC Charger
4	145-1177	1	Charger-Onboard	21	122-2594	1	Contactora-48V
4:2	147-3234	1	Kit-Service, DC Harness	22	87-5150	2	Screw-HH
5	122-2401	1	Relay, 48V Coil, 50A At 48V	23	87-5140	2	Nut-Lock
6	145-4919-0P	1	Mount-Battery, Base	24	3250-26	3	Screw-PPH
7	145-4995-0P	1	Cover-Battery, Side	25	120-4578	1	Nut-HF
8	145-4925	3	Pad-Foam	26	147-3202-0P	1	Cover-Battery [primed]
9	145-5320	3	Battery ASM	27	32105-13	1	Screw-HWH
9:2	144-0276	1	Decal-Warning, Battery	28	3296-54	3	Nut-Lock
10	32144-11	13	Screw-HWH	29	145-4993-0P	1	Cover-Battery, Side
11	147-3223	1	Bracket-Electrical	30	121-5844	4	Screw-Thd Form, HWH
11:2	145-1173	1	Decal-Fuse	31	147-3216-0P	1	Bracket-Filter
12	119-1066	4	Screw-HF	32	147-3230	1	Connector-lec
13	145-4926	3	Pad-Foam	33	510-0015	2	Scr,Mch,4-40X1/2,Phfch,Sst,Rohs
14	119-4040	8	Nut-HF, NI	34	3296-52	2	Nut-Lock, NI
15	122-2627	1	Fuse-70A	35	122-2744	1	Harness-Wire, AC Charger
16	3229-3	4	Screw-CARR	36	137-7983	1	Cord-AC, 120V
17	138-8984	1	Inv/Ctrlr-48V,Dual 94Arms				

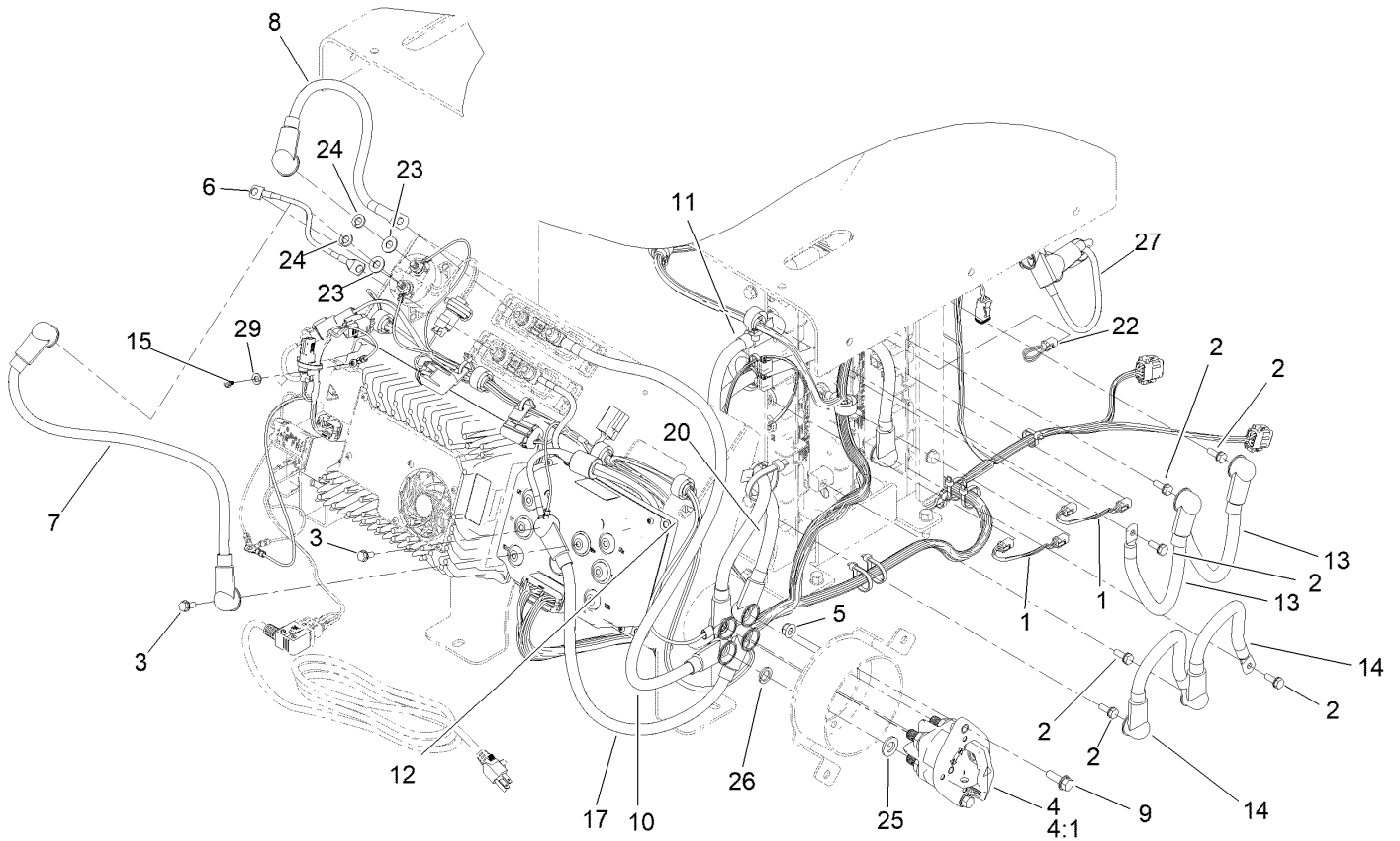
Harness Assembly



Harness Assembly (continued)

<i>Ref.</i>	<i>Part Number</i>	<i>Qty.</i>	<i>Description</i>	<i>Ref.</i>	<i>Part Number</i>	<i>Qty.</i>	<i>Description</i>
1	122-2507	1	Harness-Wire, Main	15	120-9679	1	Washer-Flat
1:13	117-4722	1	Fuse-Blade, 5A	16	3290-378	10	Tie-Cable
1:14	117-4724	1	Fuse-Blade, 10A	17	144-7138-03	1	Bracket-Mount,Light [black]
1:15	32180-567	2	Cover-Aptiv, Modified	18	3274-69	4	Screw-HSBH
1:16	32180-282	2	Resistor-120 Ohm	19	3256-2	4	Washer-Flat
1:17	32180-089	1	Cap-Plug, 3 Way	20	104-7201	4	Nut-HF, NI
1:18	116-0053	1	Cap-Plug	21	112-9421	1	Switch
2	122-2602	1	Cable-Battery, Rd ASM	22	139-8700	2	Light-Work, LED
3	122-2603	1	Cable-Battery, Rd ASM	25		1	Harness-Wire, Light Kit ●
4	122-2604	1	Cable-Battery, Rd ASM	25:3	32180-091	1	Cap-Dust, 2 Way
5	122-2605	1	Cable-Battery, Rd ASM	25:4	117-4720	1	Fuse-Blade, 3A
6	120-2037	4	R-Clamp	25:5	32180-567	1	Cover-Aptiv, Modified
7	122-2606	1	Cable-Battery, Rd ASM	27	HDW21408	6	Nut-Hex
8	122-2607	1	Cable-Battery, Rd ASM	30	145-5782	6	Screw-Sems
11	32180-030	3	Clip-Tie	32	3334-945	2	Tie-Cable
12	145-4982	1	Horn	33	122-2791	1	Cable-Battery, Rd And Bk ASM
13	49-2040	5	Screw-HWHTF				
14	1-303435	7	Washer-Spring				

● Not serviced separately



Battery Cable Assembly

<i>Ref.</i>	<i>Part Number</i>	<i>Qty.</i>	<i>Description</i>	<i>Ref.</i>	<i>Part Number</i>	<i>Qty.</i>	<i>Description</i>
1	140-9565	2	Harness-Wire, Data Interface	14	145-7183	2	Cable-Battery,Bk ASM
2	145-5783	6	Screw-Sems	15	147-3228	1	Screw-Ground
3	145-5782	2	Screw-Sems	17	122-2707	1	Cable-Battery, Bk ASM
4	122-0603	1	Switch-Disconnect	20	122-2706	1	Cable-Battery, Bk ASM
4:1	33006-00	1	Nut-HF	22	122-2323	1	Harness-Wire, Can Terminator
5	104-8300	2	Nut-HF, NI	23	107-0279	2	Washer
6	122-2610	1	Cable-Battery, Rd ASM	24	107-0280	2	Washer-Lock
7	122-2611	1	Cable-Battery, Rd ASM	25	147-3238	4	Washer-Flat
8	122-2612	1	Cable-Battery, Rd ASM	26	HDW14457	4	Split Lock Washer, 1/2, ST/ST, 18-8
9	3234-29	2	Screw-HHF	27	122-2791	1	Cable-Battery, Rd And Bk ASM
10	122-2717	1	Cable-Battery, Rd ASM	29	3253-3	1	Washer-Lock
11	122-2718	1	Cable-Battery, Rd ASM				
12	3334-945	2	Tie-Cable				
13	145-7182	2	Cable-Battery, Rd ASM				

Attachments and Accessories

For 68037 Electric Ultra Buggy

Product Name	Model/Part
Dual Wheel Kit, Elec Wheeled Ultra Buggy.....	68022

For 68037 Electric Ultra Buggy

Product Name	Model/Part
Toro Red 12oz Aerosol Can.....	361-10
New Red Paint - Gallon	361-11
Semi-Gloss Black Spray Paint.....	361-9
Dual Wheel Kit, Elec Wheeled Ultra Buggy.....	68022
Steel Tub Accessory For Material Buggies	68101



Count on it.