



## Z-Stand<sup>®</sup> Kit

### Z-Master 100 Series

Part No. 105–1621

**INSTALLATION  
INSTRUCTIONS**

## Safety and Instruction Decals



Safety decals and instructions are easily visible to the operator and are located near any area of potential danger. Replace any decal that is damaged or lost.



Part No. 104–7759

## Loose Parts

**Note:** Use the chart below to identify parts for assembly.

DESCRIPTION	QTY.	USE
Z-Stand hub	1	Assemble 100 Series Z-Stand hub
Bracket latch	1	
Bolt, 3/8 x 1–1/2 in.	1	
Lock nut, 3/8 in.	1	
Z-Stand hub	1	Install 100 Series Z-Stand hub
Bolt, 3/8 x 3–1/2 in.	2	
Lock nut, 3/8 in.	2	
Hair Pin cotter	2	
Clevis pin, 3 in.	1	
Clevis pin, 2–5/8 in.	1	

DESCRIPTION	QTY.	USE
Z-Stand foot	1	Install 100 Series Z-Stand
Z-Stand tube	1	
Thrust washers	2	
Lynch pin	1	
Hair pin cotter	2	
Clevis pin	2	
Z-Stand bracket	1	Install 100 Z-Stand bracket
Bolt, 5/16 x 2-3/4 in.	1	
Lock Nut, 5/16 in.	1	
Bolt, 1/4 x 3/4 in.	1	
Lock Nut, 1/4 in.	1	
Lanyard	1	

The following instructions are for installing the Z-Stand on a 100 Series Z-Master.

## Assemble 100 Series Z-Stand Hub

1. Install the bracket latch to the Z-Stand hub with a bolt (3/8 x 1-1/2 in.) and lock nut (3/8 in.) (Fig. 1).

**Note:** Tighten the nut and bolt. Then, unscrew it one full turn or until the latch will freely rotate (Fig. 1).

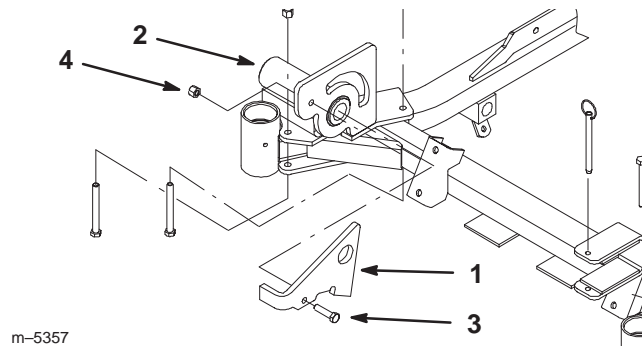


Figure 1

- |                  |                          |
|------------------|--------------------------|
| 1. Bracket latch | 3. Bolt, 3/8 x 1-1/2 in. |
| 2. Z-Stand hub   | 4. Lock Nut, 3/8 in.     |

## Install 100 Series Z-Stand Hub

1. Place the Z-Stand hub on the right front frame as shown in figure 2.

**Note:** Make sure the Z-Stand hub assembly is against the front caster housing.

2. Install Z-Stand hub to frame with 2 bolts (3/8 x 3-1/2 in.) and 2 lock nuts (3/8 in.) (Fig. 2).

**Note:** Install bolts as shown in figure 2.

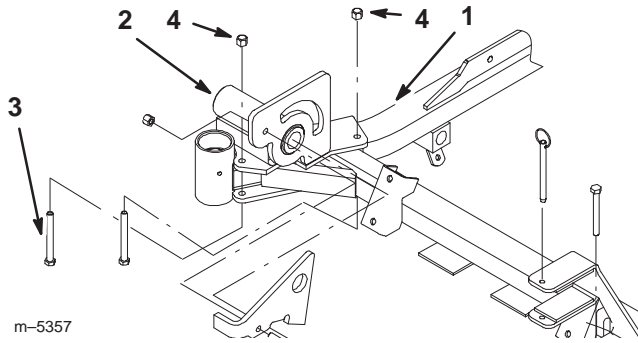


Figure 2

- |                         |                          |
|-------------------------|--------------------------|
| 1. Right front frame    | 3. Bolt, 3/8 x 3-1/2 in. |
| 2. Z-stand hub assembly | 4. Lock Nut, 3/8 in.     |

## Install 100 Series Z-stand

- Place the foot part of stand into the Z-stand tube. Align holes and secure with a clevis pin (2-5/8 in.) and hair pin cotter (Fig. 3).
- Install Z-stand assembly to the pivot pin with a clevis pin (3 in.) and hair pin cotter (Fig. 3).

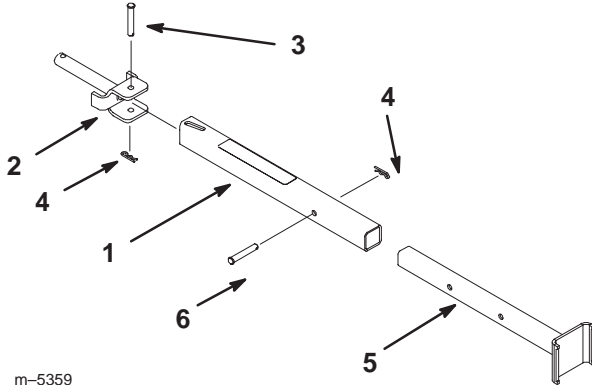


Figure 3

- |                      |                          |
|----------------------|--------------------------|
| 1. Z-stand tube      | 4. Hair pin cotter       |
| 2. Pivot Pin         | 5. Z-stand foot          |
| 3. Clevis Pin, 3 in. | 6. Clevis Pin, 2-5/8 in. |

- Place a thrust washer onto the pivot pin (Fig. 4).

- Insert pivot pin into the Z-stand hub as shown in figure 4.

**Note:** When inserting the pivot pin, make sure the position of slot in tube is as shown in figure 3.

- Place a thrust washer onto the pivot pin and secure with a lynch pin (Fig. 4).

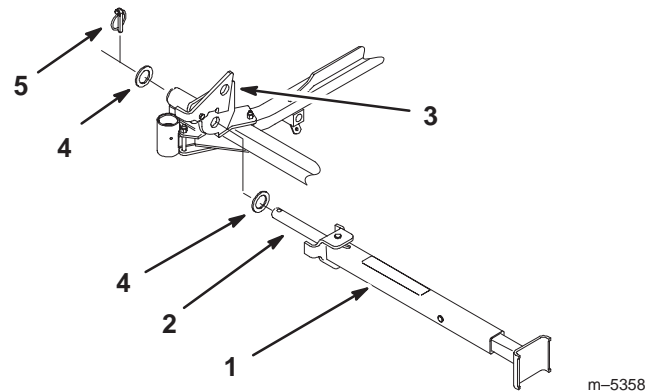


Figure 4

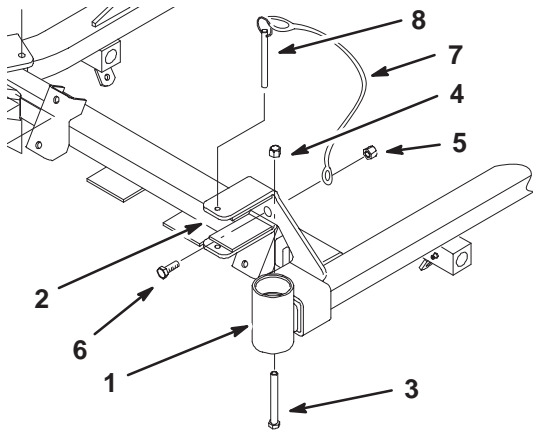
- |                |                  |
|----------------|------------------|
| 1. Z-stand     | 4. Thrust washer |
| 2. Pivot Pin   | 5. Lynch pin     |
| 3. Z-stand hub |                  |

## Install 100 Series Z-stand Bracket

- Place the Z-stand bracket on the left front frame as shown in figure 5.
- Install Z-stand bracket with a bolt (5/16 x 3-1/4 in.) and lock nut (5/16 in.) (Fig. 5).

**Note:** Install bolt as shown in figure 5.

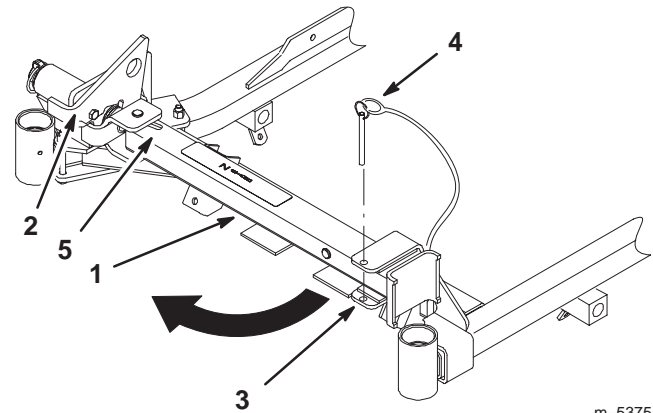
- Install lanyard to bracket pin. Use large loop on lanyard (Fig. 5).
- Install lanyard with a bolt (1/4 x 3/4 in.) and lock nut (1/4 in.) (Fig. 5).



m-5357

Figure 5

- |                              |                        |
|------------------------------|------------------------|
| 1. Left front caster housing | 5. Lock Nut, 1/4 in.   |
| 2. Z-Stand bracket           | 6. Bolt, 1/4 x 3/4 in. |
| 3. Bolt, 5/16 x 3-1/4 in.    | 7. Lanyard             |
| 4. Lock Nut, 5/16 in.        | 8. Bracket Pin         |



m-5375

Figure 6

- |            |                   |
|------------|-------------------|
| 1. Z-Stand | 4. Bracket Pin    |
| 2. Latch   | 5. Bottom of slot |
| 3. Bracket |                   |

## Using the Z-Stand™

The Z-Stand is used for raising the front end of the machine. This allows for cleaning of the deck and removal of the blades.

⚠
Warning
⚠

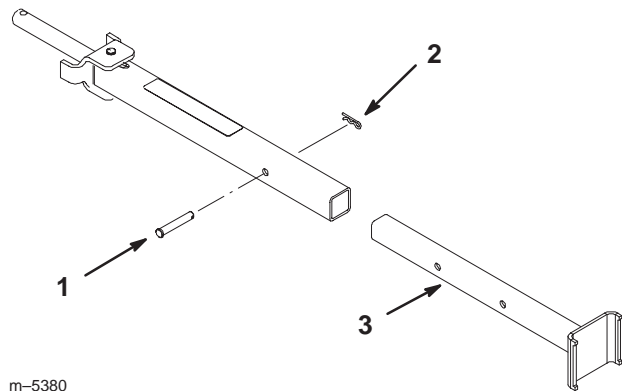
**Unit could fall onto someone and cause serious injury or death.**

- Use extreme caution when operating unit on Z-Stand.
- Use only for cleaning deck and removing blades.
- Do not keep unit on Z-Stand for extended periods of time.
- Always shut engine off and set parking brake before performing any maintenance to deck.

### Driving up onto the Z-Stand

1. Raise deck to transport position.
2. Remove bracket pin (Fig. 6).

3. Raise latch. Swing stand foot out front and slide stand toward machine, into the bottom of slot (Fig. 6 and 8).
4. Remove the cotter hair pin and clevis pin (Fig. 7).
5. Pull out the foot part of stand and insert clevis pins and cotter hair pins (Fig. 7).



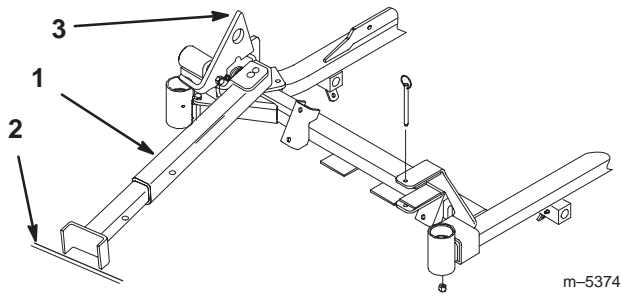
m-5380

Figure 7

- |                    |                 |
|--------------------|-----------------|
| 1. Clevis Pin      | 3. Z-Stand foot |
| 2. Hair pin cotter |                 |

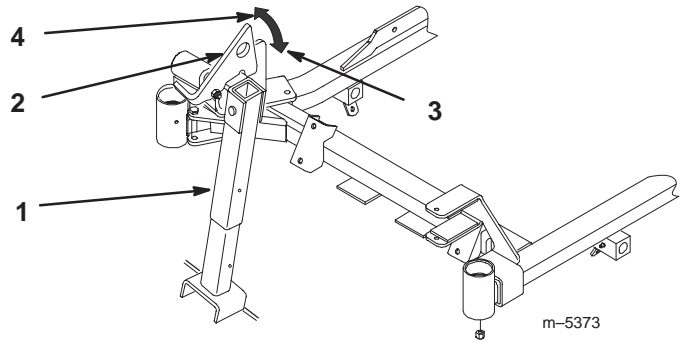
6. Set foot of stand on the ground and rest latch on pivot tab (Fig. 8).
7. Start engine and put at half throttle.

**Note:** For best results, place foot of stand into seams in sidewalks or into turf (Fig. 8).



**Figure 8**

- |                                 |                               |
|---------------------------------|-------------------------------|
| 1. Z-Stand (Positioned in slot) | 2. Crack in side walk or turf |
|                                 | 3. Latch resting on pivot tab |



**Figure 9**

- |            |                      |
|------------|----------------------|
| 1. Z-Stand | 3. Locked position   |
| 2. Latch   | 4. Unlocked position |

8. Drive onto stand. Stop when latch drops over tab into locked position (Fig. 9). Once onto stand, engage parking brake. Shut off engine.
9. Chock or block the drive wheels.

! **Warning** !

**Parking brake may not hold machine parked on Z-Stand and could cause personal injury or property damage.**

**Do not park on Z-Stand unless wheels are chocked or blocked.**

10. Perform maintenance.
11. Remove chocks or blocks.

### Driving off the Z-Stand

1. Raise latch to unlocked position (Fig. 9).
2. Start engine and place at half throttle. Disengage parking brake.
3. Slowly drive backwards off of stand.
4. Remove the cotter hair pins and stand pins (Fig. 7).
5. Push in the inner part of stand and insert stand pins and cotter hair pins (Fig. 7).
6. Return stand to its rest position (Fig. 6).
7. Insert bracket pin into Z-Stand bracket (Fig. 6).





