



**Count on it.**

**Parts Catalog**

**Hydra Borer**

**Maxi Sneaker™ 370 Vibratory Plow**

Model No. 25532E

Model No. 25532T



# Ordering Replacement Parts

To order replacement parts, please supply the part number, the quantity, and the description of each part desired.

## Understanding Reference Numbers

Each identified part in an illustration has a reference number. The reference number for a part also appears in the parts list, along with other information about the part.

This catalog uses two special reference number formats, one to indicate parts in a service assembly and another to indicate the quantity of a given part in an illustration.

## Service Assembly Reference Numbers

Parts in service assemblies have reference numbers in the form a:b. The a represents the reference number of the entire service assembly and the b represents a sequential number unique to each part within the service assembly.

For example, a wheel assembly might be identified by reference number 6, the tire by 6:1, the valve by 6:2, and the wheel by 6:3. When you order the assembly identified by reference number 6, you receive all parts identified by reference numbers 6:1, 6:2, and 6:3. However, you may also order any part individually. Reference numbers of this type appear in illustration and in parts lists.

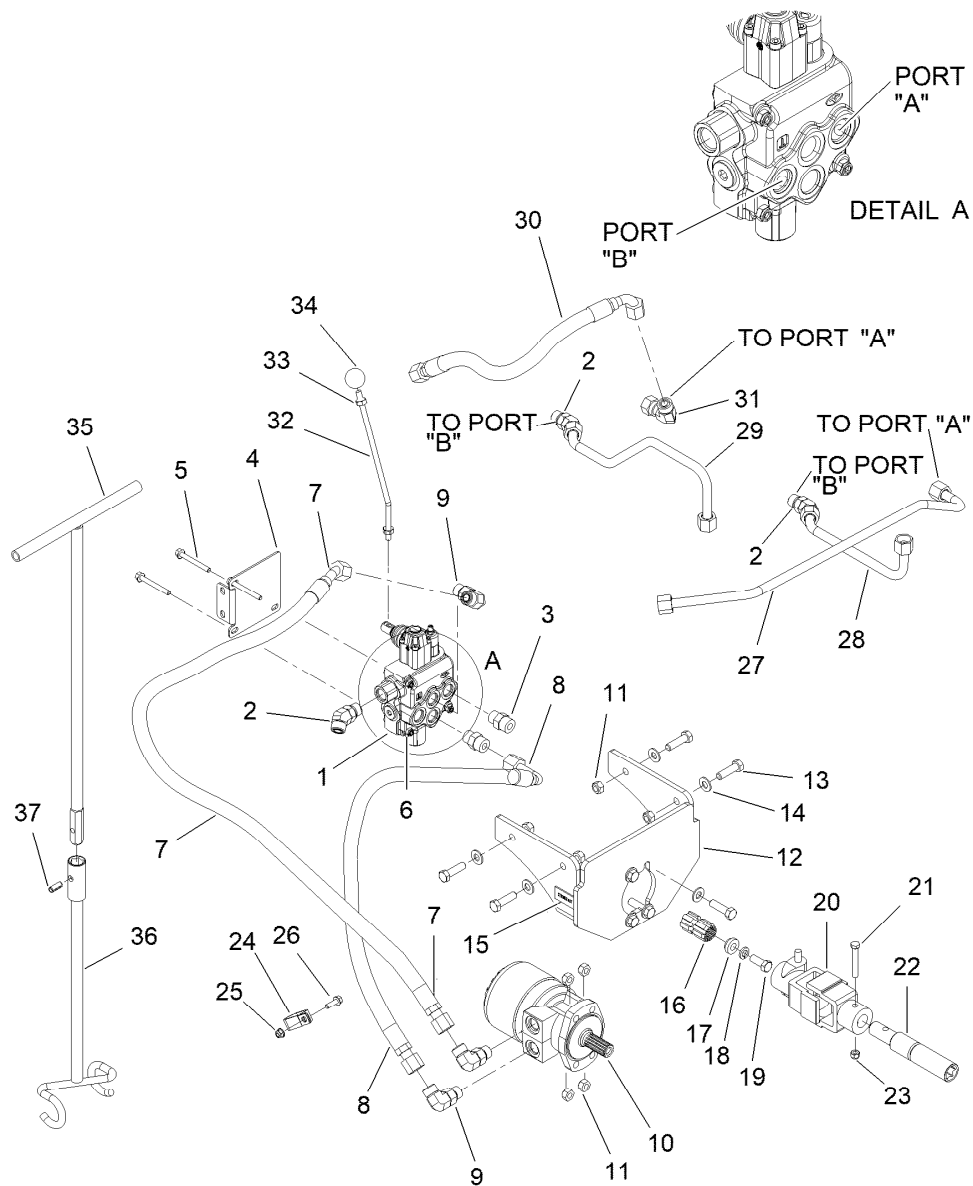
## Reference Numbers Indicating Quantity

In an illustration, if a reference number indicates more than one part, the reference number has the form nX y. The n represents the quantity of the part, the X is the multiplication symbol, and the y represents the reference number.

For example, in an illustration, the reference number 2X 37 means that two of the parts identified by reference number 37 are indicated.

# Contents

Hydra Borer Assembly ..... 4  
Hydraulic Motor Assembly No. AUH673156 ..... 6

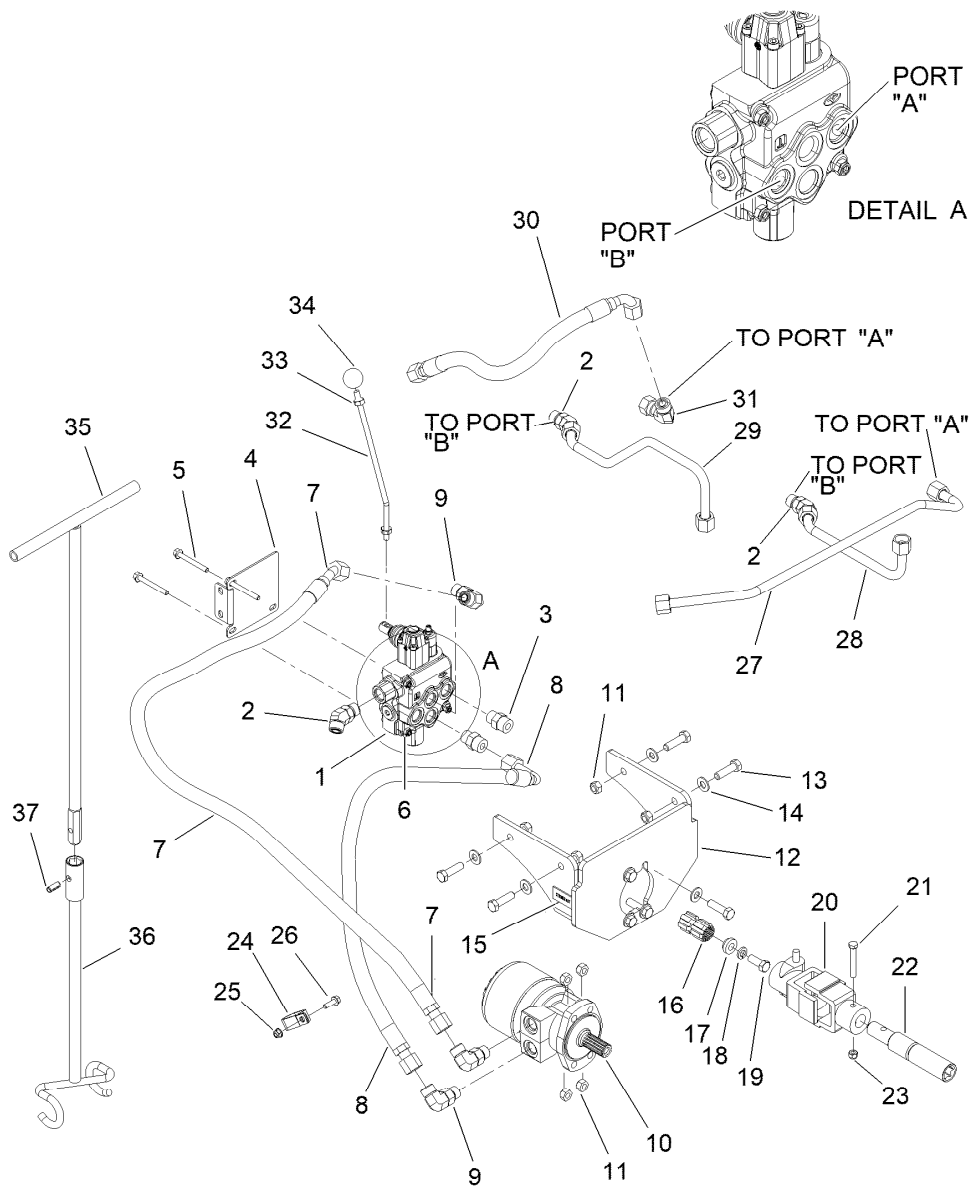


## Hydra Borer Assembly

Ref.	Part Number	Qty.	Description	Ref.	Part Number	Qty.	Description
1	130-4310	1	Hydro Valve ASM	15:3	147-5747	1	California Prop 65 Warning - Parts ●
2	147-5728	3	Connector (10S-10045)	16	AUH312314	1	Adapter
3	147-5727	2	Connector (10S-100)	17	AUH435886	1	Retainer-Adapter
4	130-4311-03	1	Bracket-Hydro Valve	18	3253-7	1	Washer-Lock
5	33104-070	3	Screw-HHF	19	106-0378	1	Screw
6	33024-00	3	Nut-Lock, NI	20	AUH511113	1	U-Joint ASM
7	147-5739	1	Hose (10Ofx45-53"-3000)	21	323-47	1	Screw-HH
8	147-5740	1	Hose (10Ofx90L-54"-3000)	22	147-5745	1	Adapter
9	147-5706	3	Connector (10S-10090)	23	97-1204	1	Nut-Hex
10	AUH673156	1	HYD Motor ASM	24	2412-137	1	Clamp-R, Double
11	97-1206	8	Locknut	25	104-8300	1	Nut-HF, NI
12	147-5749	1	Mount - Hydrabore	26	3234-29	1	Screw-HHF
13	121-1524	8	Screw-HH	27	147-5744	1	Hardline (-10 Hydraborer To Trencher)
14	AU496-21053	8	Washer-Flat	28	147-5743	1	Hardline (-10 Hydraborer To Return)
15		1	Hydrabore Decal Kit ■				
15:1	147-5746	2	Danger Rotating Shaft ●				
15:2	147-5748	1	Hydra Bore Control ●				

● Not illustrated

■ Not serviced separately



## Hydra Borer Assembly (continued)

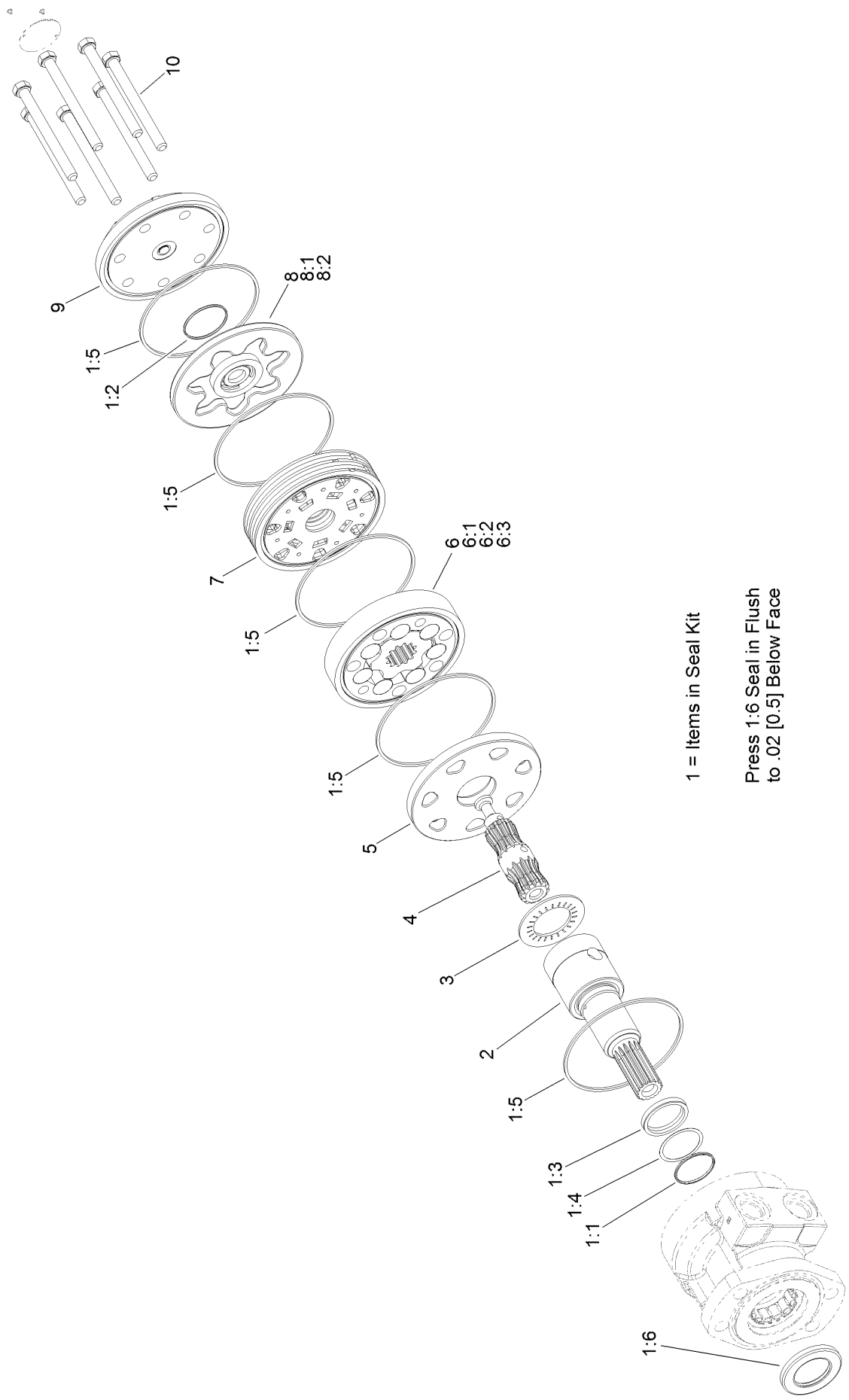
Ref.	Part Number	Qty.	Description
29	147-5741	1	Hardline (Hydrabore To Return)
30	147-5742	1	Hose (100fx90S-18"-3000)
31	340-160	1	Elbow-90
31:1	237-65	1	O-Ring ●
32	130-4349	1	Lever

Ref.	Part Number	Qty.	Description
33	33015-00	2	Nut-Hex
34	130-7377	1	Knob-Round
35	106-7740-03	1	Handle-Tool, Guide
36	104-5988-03	1	Tool-Guide, Rod
37	32121-41	1	Pin-Roll

● Not illustrated

■ Not serviced separately

# Hydraulic Motor Assembly No. AUH673156



1 = Items in Seal Kit

Press 1:6 Seal in Flush to .02 [0.5] Below Face

# Hydraulic Motor Assembly No. AUH673156 (continued)

<i>Ref.</i>	<i>Part Number</i>	<i>Qty.</i>	<i>Description</i>	<i>Ref.</i>	<i>Part Number</i>	<i>Qty.</i>	<i>Description</i>
1	112-8405	1	Seal Kit	6	76-0970	1	Rotor Set
1:1		1	Ring-Backup ●	6:1		1	Rotor ●
1:2		1	Seal-Commutator ●	6:2		7	Vane ●
1:3		1	Seal-Shaft ●	6:3		1	Stator ●
1:4		1	Washer-Backup ●	7	92-9755	1	Manifold
1:5		5	Ring-Seal ●	8	106-1982	1	Commutator ASM
1:6		1	Seal-Dirt And Water ●	8:1		1	Commutator ●
2		1	Shaft-Coupling ●	8:2		1	Ring-Commutator ●
3	76-0850	1	Bearing-Thrust	9	76-0940	1	End Cover ASM
4	76-0960	1	Link-Drive	10		7	Bolt-Special ●
5	92-9754	1	Plate-Wear				

● Not serviced separately



**Count on it.**