



Count on it.

Parts Catalog

**eTimeMaster™ eTM76 76cm
60V Lawn Mower**

Model No. 21876—Serial No. 414900000 and Up



Ordering Replacement Parts

To order replacement parts, please supply the part number, the quantity, and the description of each part desired.

Understanding Reference Numbers

Each identified part in an illustration has a reference number. The reference number for a part also appears in the parts list, along with other information about the part.

This catalog uses two special reference number formats, one to indicate parts in a service assembly and another to indicate the quantity of a given part in an illustration.

Service Assembly Reference Numbers

Parts in service assemblies have reference numbers in the form a:b. The a represents the reference number of the entire service assembly and the b represents a sequential number unique to each part within the service assembly.

For example, a wheel assembly might be identified by reference number 6, the tire by 6:1, the valve by 6:2, and the wheel by 6:3. When you order the assembly identified by reference number 6, you receive all parts identified by reference numbers 6:1, 6:2, and 6:3. However, you may also order any part individually. Reference numbers of this type appear in illustration and in parts lists.

Reference Numbers Indicating Quantity

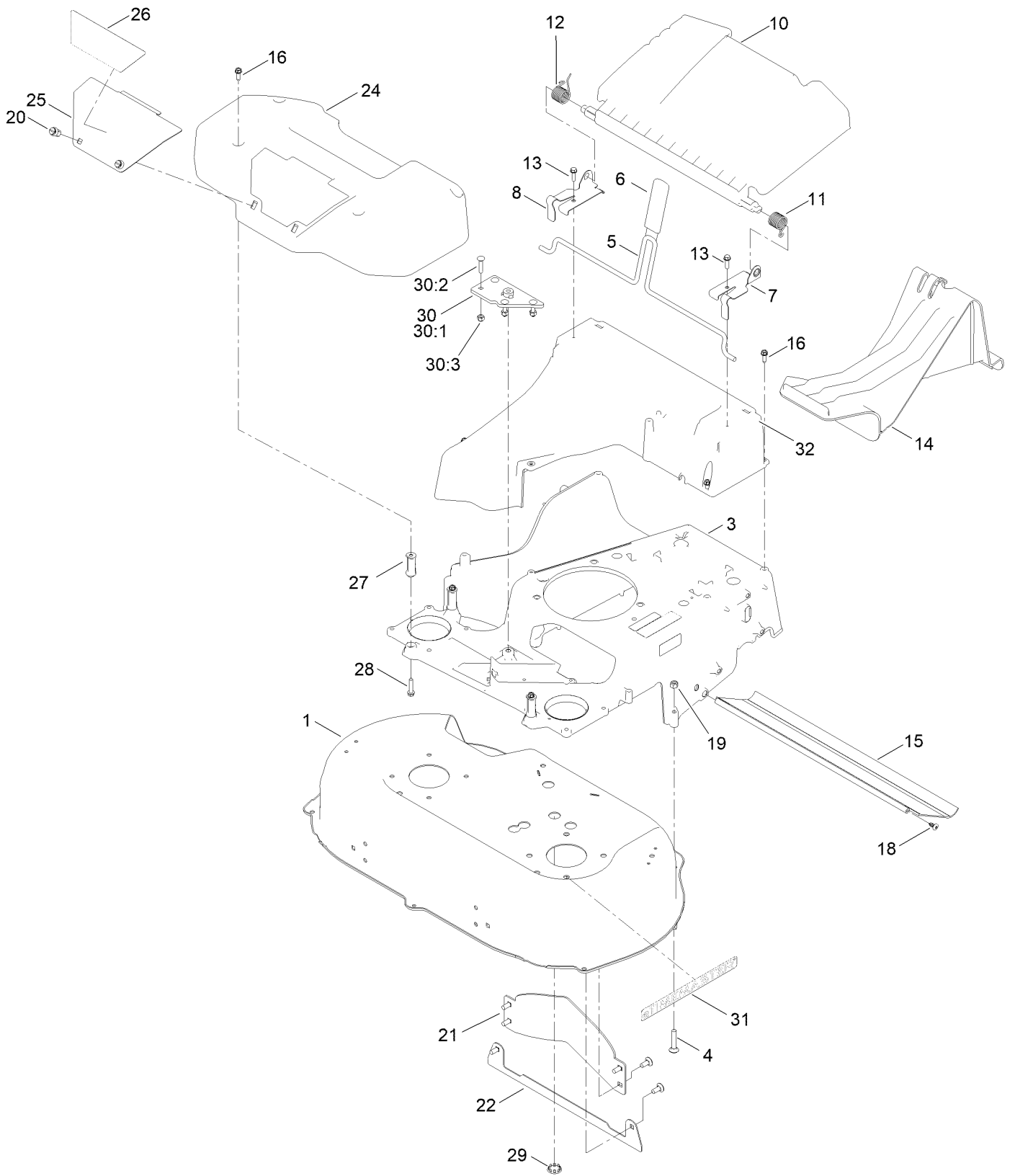
In an illustration, if a reference number indicates more than one part, the reference number has the form nX y. The n represents the quantity of the part, the X is the multiplication symbol, and the y represents the reference number.

For example, in an illustration, the reference number 2X 37 means that two of the parts identified by reference number 37 are indicated.

Contents

Housing Assembly	4
Spindle and Belt Assembly	6
Side Discharge Chute Assembly	8
Bag Assembly	10
Motor Module and Belt Assembly	12
Motor Module Assembly No. 145-4010	14
Front Wheel and Height-of-Cut Assembly	16
Rear Wheel and Height-of-Cut Assembly	18
Handle Assembly	20
Battery Charger Assembly	22
Attachments and Accessories	24

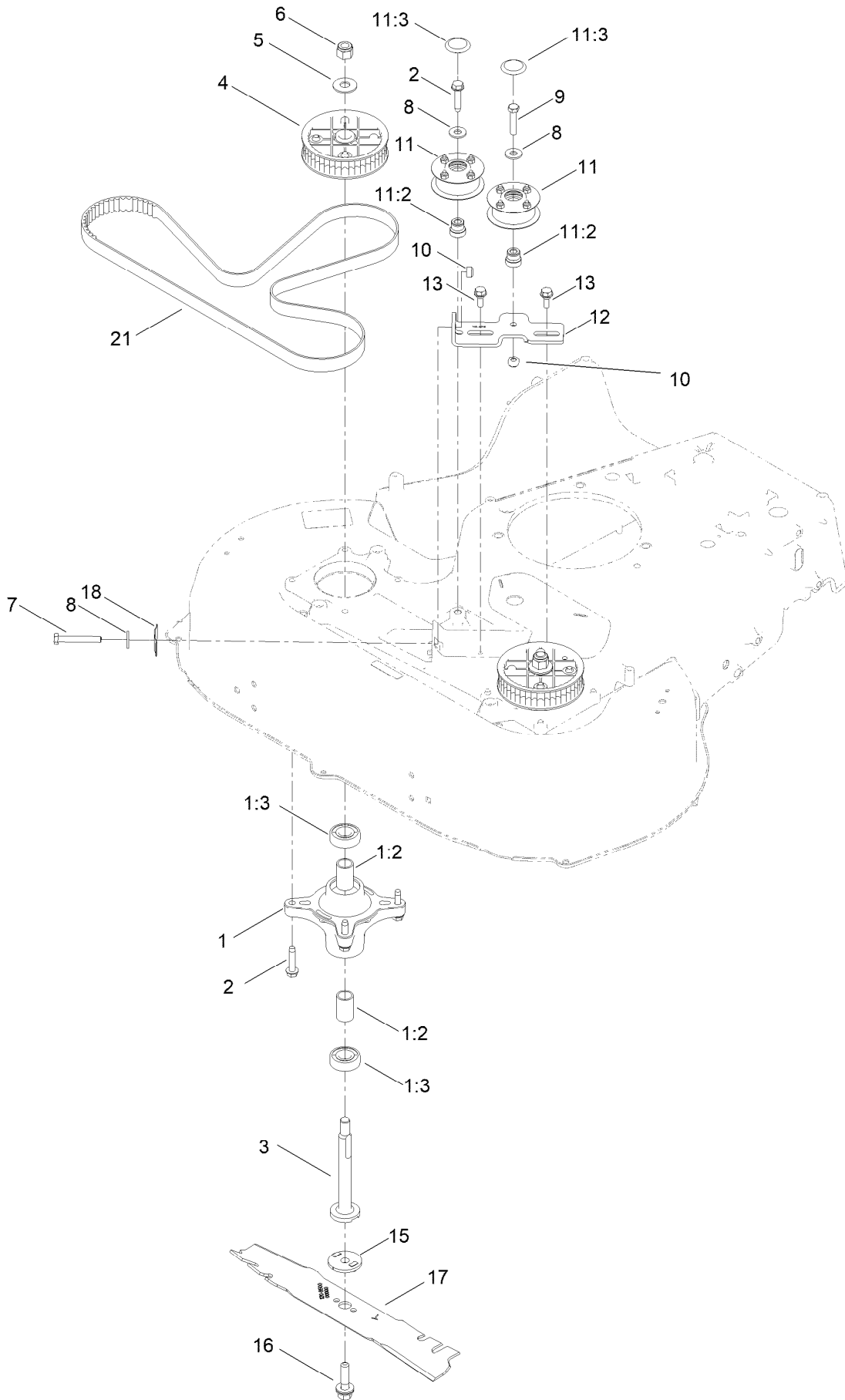
Housing Assembly



Housing Assembly (continued)

<i>Ref.</i>	<i>Part Number</i>	<i>Qty.</i>	<i>Description</i>	<i>Ref.</i>	<i>Part Number</i>	<i>Qty.</i>	<i>Description</i>
1	161-3116	1	Housing ASM	20	121-5840	2	Fastener
3	145-3985-01	1	Frame-30In, 60V	21	130-2352-01	1	Baffle-Control
4	137-3063	2	Bolt-Car	22	125-5081-01	1	Plate-Deck
5	139-5415	1	Rod-Release, Handle	24	145-5898	1	Cover-Belt
6	120-7018	1	Grip-Lever	25	145-5899-03	1	Panel-Access
7	121-9114	1	Bracket-Door, LH	26	145-3999	1	Decal-Access Panel
8	121-9115	1	Bracket-Door, RH	27	140-3901	3	Spacer-Frame, 30 In.
10	145-3997	1	Rear Deflector ASM	28	108-4862	3	Screw-HWH Thd Roll
11	115-2859	1	Spring-Torsion	29	147-0471	1	Plug-Button
12	114-7924	1	Spring-Torsion	30	161-3140	1	Frame-Plate Kit
13	137-3099	2	Screw-Plastite, HWH	30:1	161-3141	1	Plate-Frame, ASM
14	120-5225	1	Plug-Mulch	30:2	3229-3	4	Screw-CARR
15	120-6241	1	Shield-Trailing	30:3	3296-42	4	Nut-Lock, NI
16	49-2040	8	Screw-HWHTF	31	161-3153	1	Decal
18	139-1692	2	Screw-PTH	32	133-8177	1	Chute
19	119-4038	2	Nut-Hex				

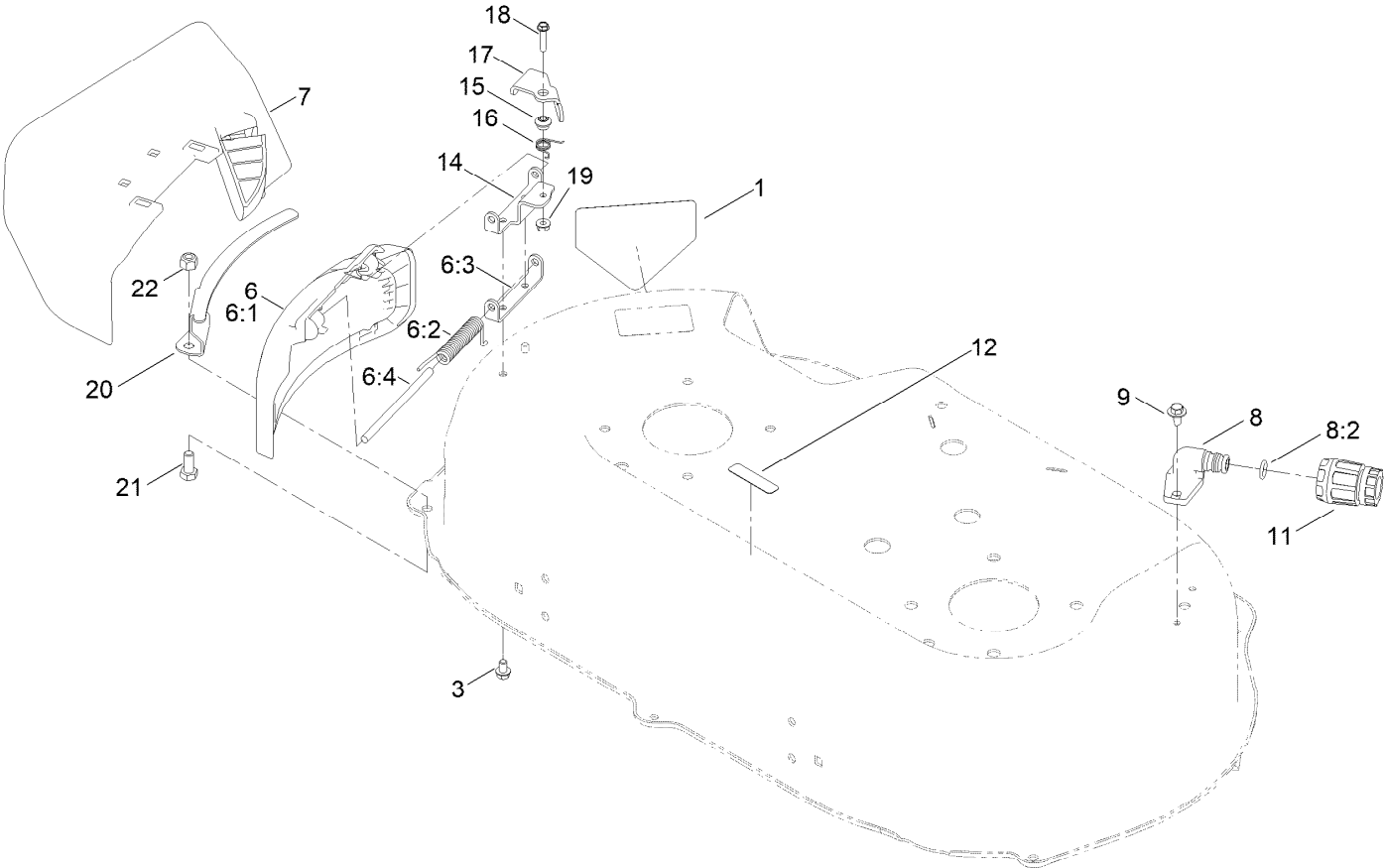
Spindle and Belt Assembly



Spindle and Belt Assembly (continued)

<i>Ref.</i>	<i>Part Number</i>	<i>Qty.</i>	<i>Description</i>	<i>Ref.</i>	<i>Part Number</i>	<i>Qty.</i>	<i>Description</i>
1	121-9107	2	Spindle ASM	10	119-4038	2	Nut-Hex
1:2	120-7935	2	Spacer	11	139-1758	2	Pulley Kit
1:3	138-9770	2	Bearing-Ball	11:2	131-4504	1	Adapter-Bore
2	139-1731	9	Screw-Thd Roll, HWH	11:3	125-2533	1	Plug-Cap
3	139-6612	2	Shaft-Spindle	12	145-4016	1	Bracket-Idler
4	121-9100	2	Sprocket	13	139-1730	2	Screw-Shoulder, HHF
5	109-9505	2	Washer-Spring	15	120-5236	2	Adapter-Blade
6	139-1725	2	Nut-Hex	16	125-2466	2	Bolt-Blade
7	139-1728	1	Bolt-HH Ft	17	145-4002-03	2	Blade-Rotary [black]
8	139-1723	2	Washer-Flat	18	121-2336	1	Spring-Flat
9	120-2779	1	Screw-HH	21	145-4001	1	Belt-Synchronous

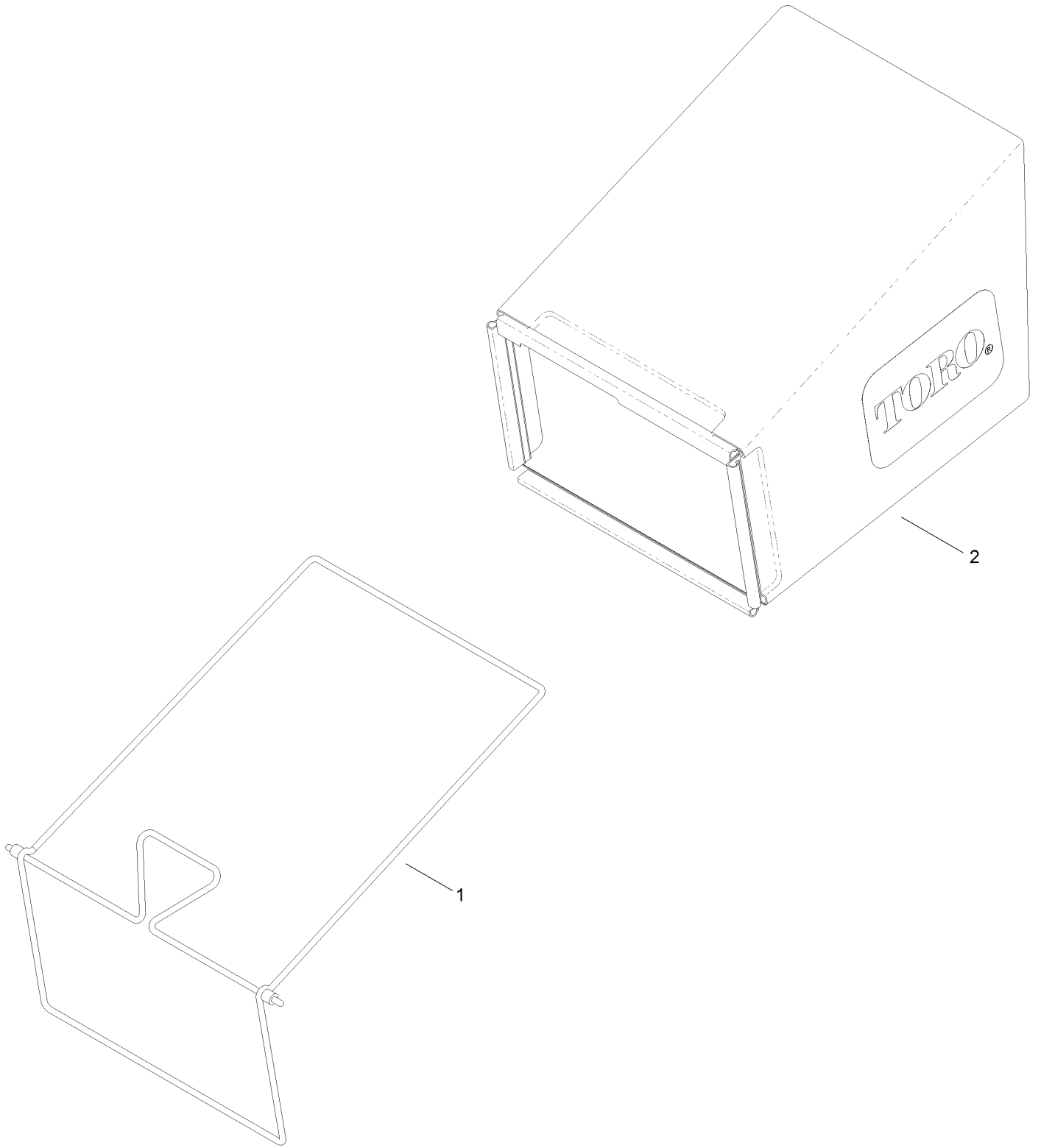
Side Discharge Chute Assembly



Side Discharge Chute Assembly (continued)

<i>Ref.</i>	<i>Part Number</i>	<i>Qty.</i>	<i>Description</i>	<i>Ref.</i>	<i>Part Number</i>	<i>Qty.</i>	<i>Description</i>
1	112-8760	1	Decal-Danger	11	95-3270	1	Connector-Hose
3	137-4795	2	Screw	12	120-9570	1	Decal-Warning
6	138-5325	1	Side Deflector Service ASM	14	138-3293	1	Bracket-Lockout
6:1	138-5317	1	Deflector-Discharge, Side	15	107-7463	1	Spacer
6:2	127-0721	1	Spring-Torsion, Cover	16	107-7462	1	Spring-Torsion
6:3	138-3293	1	Bracket-Lockout	17	161-4783	1	Lever-Lockout
6:4	99-5291	1	Rod-Cover	18	106-9169	1	Screw-HWH
7	139-5416	1	Side Discharge Chute ASM	19	139-1712	1	Nut-Hex Flange
8	133-9289	1	Fitting-Washout	20	161-3198-03	1	Bracket-Door, Side
8:2	133-9290	1	O-Ring	21	137-3052	1	Screw-HH
9	139-1700	2	Screw-HWH, Thd Roll	22	119-4038	1	Nut-Hex

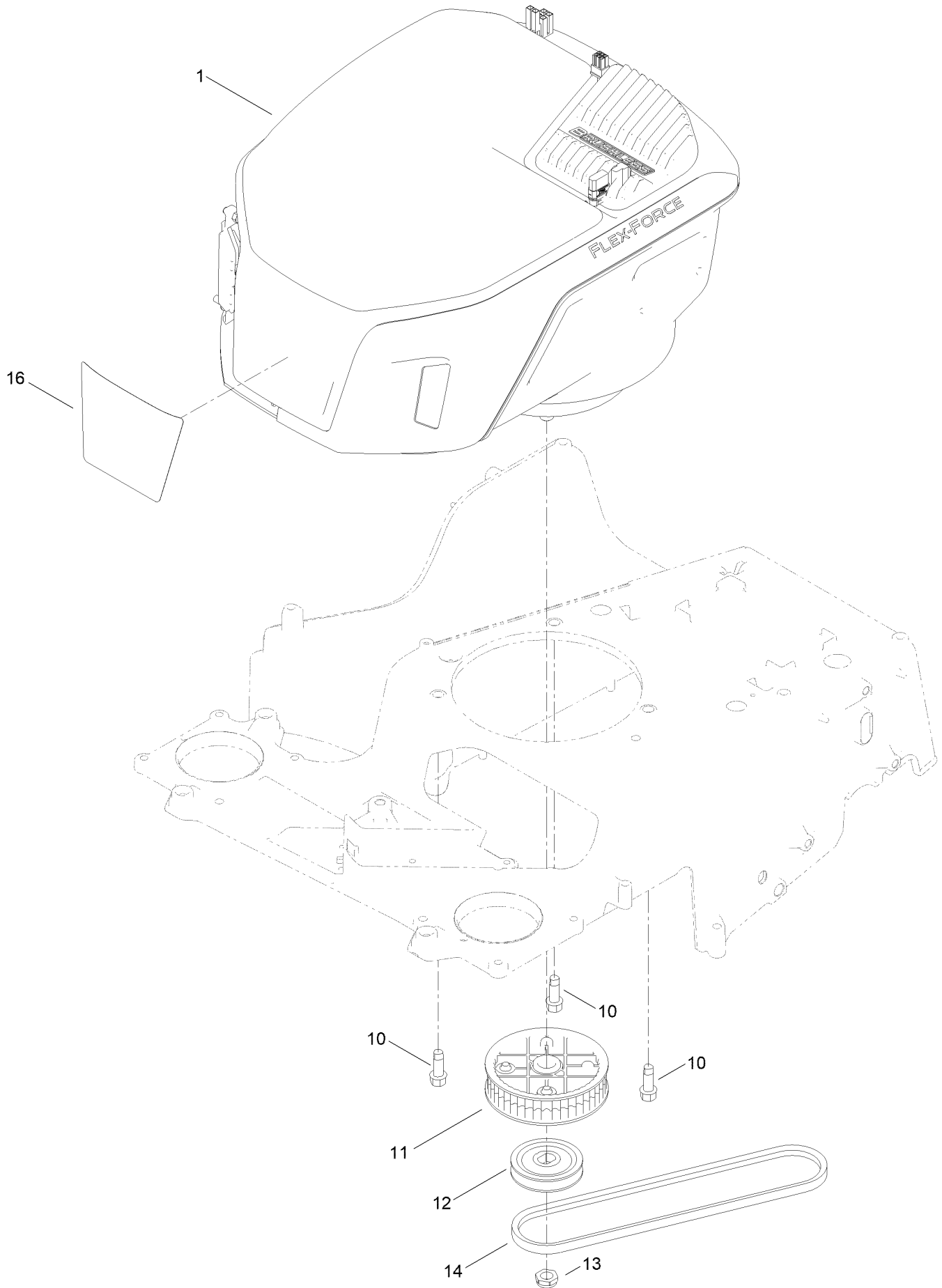
Bag Assembly



Bag Assembly (continued)

<i>Ref.</i>	<i>Part Number</i>	<i>Qty.</i>	<i>Description</i>
1	121-5766-03	1	Frame-Bag
2	121-5770	1	Bag-Grass

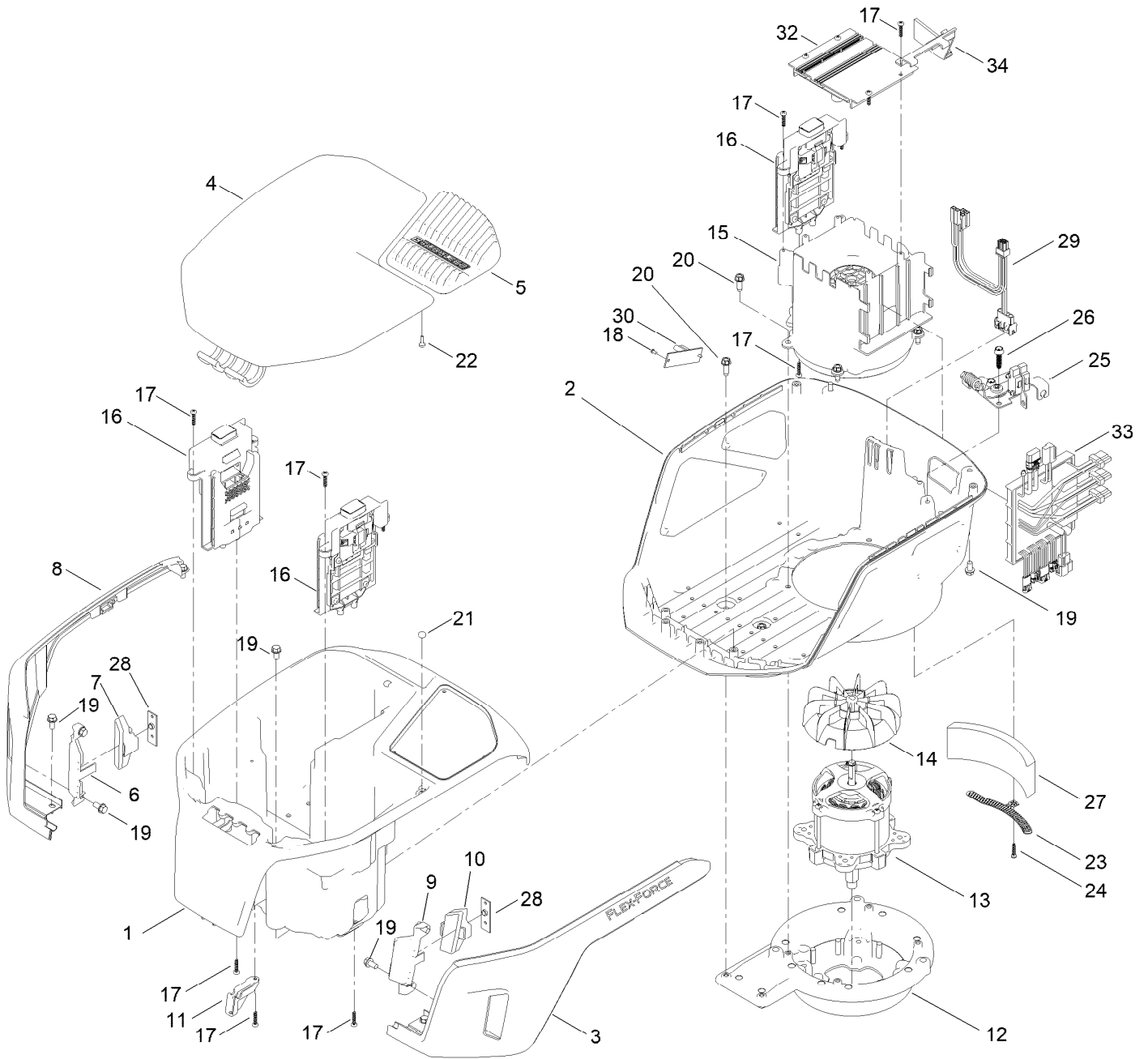
Motor Module and Belt Assembly



Motor Module and Belt Assembly (continued)

<i>Ref.</i>	<i>Part Number</i>	<i>Qty.</i>	<i>Description</i>	<i>Ref.</i>	<i>Part Number</i>	<i>Qty.</i>	<i>Description</i>
1	145-4010	1	Motor Module 60V	13	161-4787	1	Nut-Hex Jam,NI
10	121-5844	3	Screw-Thd Form, HWH	14	120-9470	1	V-Belt, Traction
11	121-9100	1	Sprocket	16	161-3152	1	Decal-60V
12	147-0431	1	Pulley-Traction, 2.63				

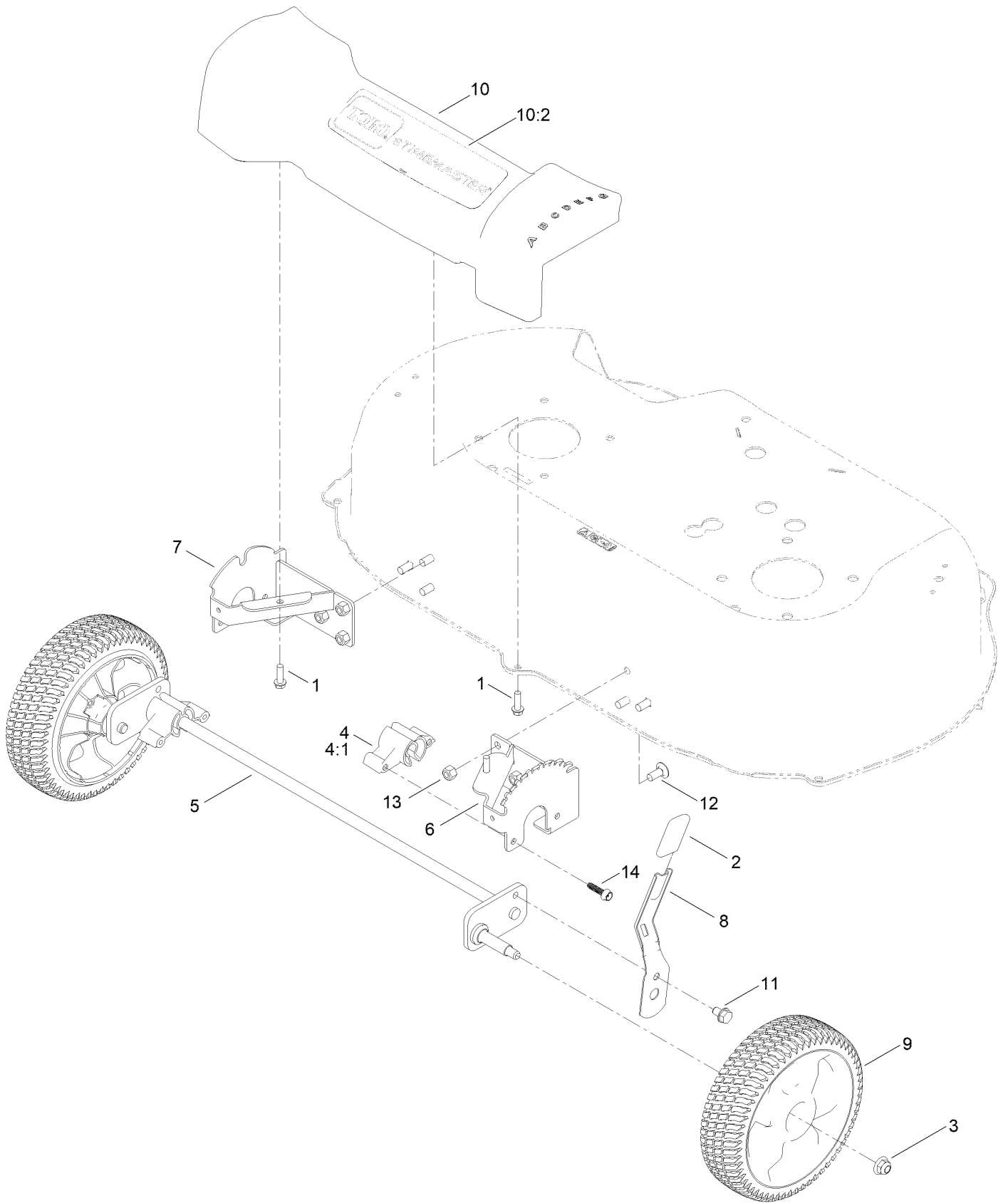
Motor Module Assembly No. 145-4010



Motor Module Assembly No. 145-4010 (continued)

<i>Ref.</i>	<i>Part Number</i>	<i>Qty.</i>	<i>Description</i>	<i>Ref.</i>	<i>Part Number</i>	<i>Qty.</i>	<i>Description</i>
1	145-5882	1	Bucket-Battery	18	112-8658	2	Screw-PPH
2	145-5883	1	Shroud-Lower	19	46-8093	12	Screw-Plastite
3	145-5884	1	Trim-Shroud, LH	20	49-2040	6	Screw-HWHTF
4	145-5885	1	Lid-Motor	21	114-5896	2	Magnet
5	145-5886	1	Heatsink-Controller	22	95-4234	2	Screw-PPH
6	145-5887	1	Lens-LED, RH	23	147-0449	1	Bracket-Foam
7	145-5888	1	Reflector-LED, RH	24	138-3273	1	Screw-Plastic, PPH
8	145-5889	1	Trim-Shroud, RH	25	133-1918	1	Bail Switch ASM
9	145-5890	1	Lens-LED, LH	26	130-6658	2	Screw-Flange, Plastic
10	145-5891	1	Reflector-LED, LH	27	145-3972	1	Foam
11	145-5892	2	Bracket-Support, Lid	28	144-6448	2	Board-Light, LED
12	145-5895	1	Mount-Base, Motor	29	139-6637	1	Harness-Wire
13	145-4048	1	Motor-60V	30	145-1530	1	Driver-LED
14	145-5896	1	Fan-Motor	32	147-0451	1	Controller-Pmu
15	145-5897	1	Shroud-Motor	33	147-0452	1	Controller-Motor
16	147-0403	3	Receiver-Battery	34	161-3110	1	Bracket-Pmu
17	94-4496	20	Screw-PPH				

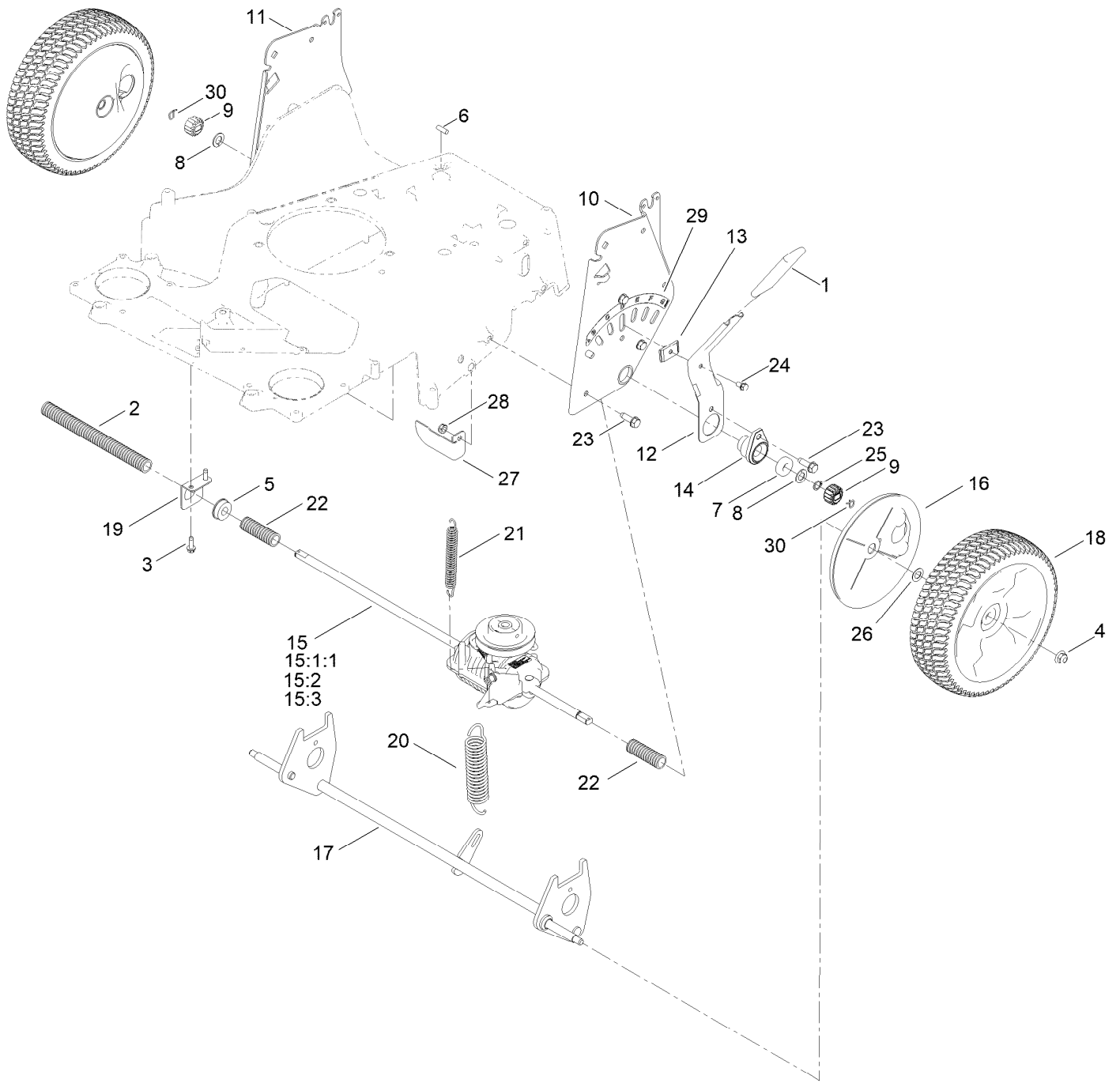
Front Wheel and Height-of-Cut Assembly



Front Wheel and Height-of-Cut Assembly (continued)

<i>Ref.</i>	<i>Part Number</i>	<i>Qty.</i>	<i>Description</i>	<i>Ref.</i>	<i>Part Number</i>	<i>Qty.</i>	<i>Description</i>
1	137-3099	3	Screw-Plastite, HWH	8	120-7043	1	Arm-Spring
2	120-9535	1	Grip-Lever	9	125-2510	2	8 Inch Wheel ASM
3	119-4042	2	Nut-HF, NI	10	161-4773	1	Front Cover ASM
4	147-0519	2	Bushing-Pivot, Front	10:2	161-3151	1	Decal-Cover Front
4:1	15-4318	1	Resin-Nylon 66	11	139-1727	1	Screw-HWH, Thd Roll
5	139-1753	1	Front Axle ASM	12	137-3061	6	Bolt-CARR
6	120-7037-03	1	Plate-HOC, LH	13	119-4038	6	Nut-Hex
7	120-7038-03	1	Plate-HOC, RH	14	130-6658	4	Screw-Flange, Plastic

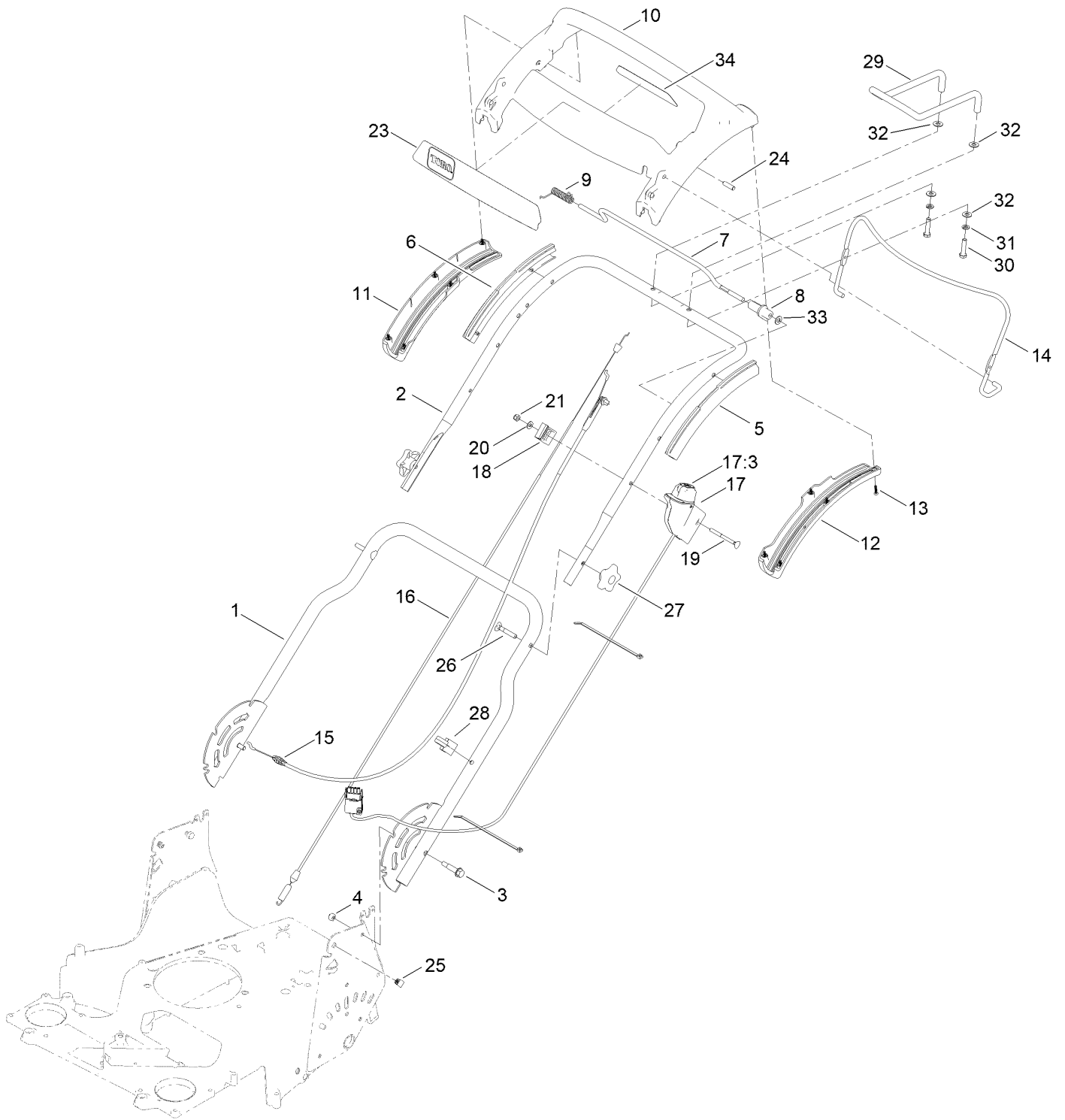
Rear Wheel and Height-of-Cut Assembly



Rear Wheel and Height-of-Cut Assembly (continued)

<i>Ref.</i>	<i>Part Number</i>	<i>Qty.</i>	<i>Description</i>	<i>Ref.</i>	<i>Part Number</i>	<i>Qty.</i>	<i>Description</i>
1	137-4796	1	Grip-Lever, Lift	15:3	32151-61	1	Ring-Retaining
2	121-5799	1	Conduit-Convoluted	16	147-0404	2	Cover-Gear
3	49-2040	2	Screw-HWHTF	17	147-0401	1	Rear Axle ASM
4	119-4042	2	Nut-HF, NI	18	125-2509	2	10 Inch Wheel Gear ASM
5	104-8699	1	Bearing-Ball	19	138-3233	1	Mount-Bearing
6	106-5681	1	Pin-Stop	20	120-7026	1	Spring-Extension
7	133-2603	2	Bearing-Ball	21	120-7027	1	Spring-Extension
8	110-7191	2	Washer-Thrust	22	121-5800	2	Conduit-Convoluted
9	131-5399	2	Gear-Pinion, 15T	23	701243	8	Screw-Thd Roll, HWH
10	120-3342-03	1	Plate-HOC, LH	24	32144-4	1	Screw-HWH
11	120-3343-03	1	Plate-HOC, RH	25	32151-61	1	Ring-Retaining
12	137-9124	1	Arm-Spring	26	36-4780	2	Washer-Plain
13	120-5209	1	Key-Arm, Spring	27	138-5338	1	Bracket-Stop
14	136-5929	2	Retainer-Bearing	28	137-3089	1	Nut-Hex
15	131-9665	1	Transmission Kit	29	125-2497	1	Decal-HOC, Rear
15:1:1	130-2370	1	Transmission Pulley Kit	30	130-2369	2	Pin-Snap
15:2	130-2369	2	Pin-Snap				

Handle Assembly

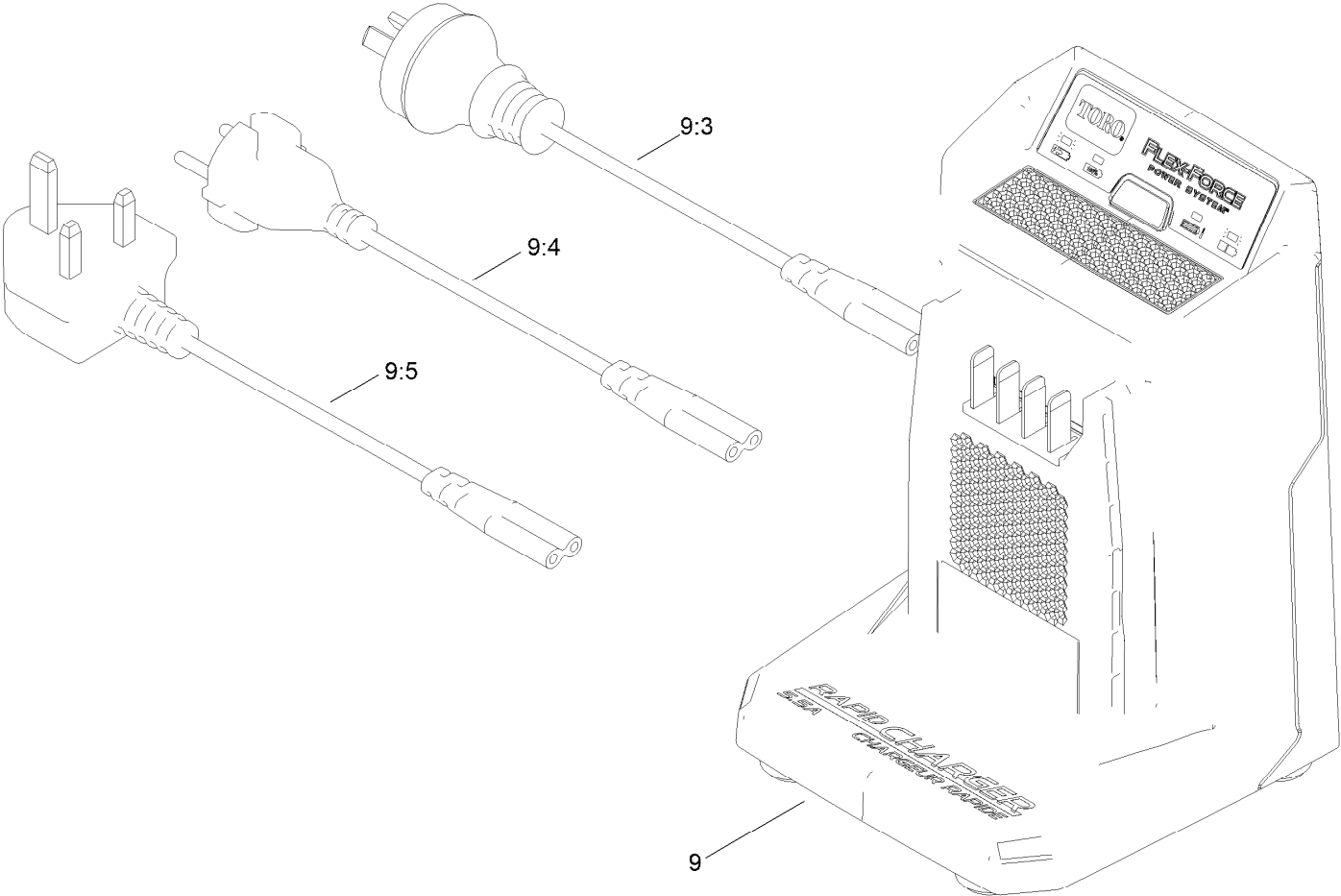


Handle Assembly (continued)

<i>Ref.</i>	<i>Part Number</i>	<i>Qty.</i>	<i>Description</i>	<i>Ref.</i>	<i>Part Number</i>	<i>Qty.</i>	<i>Description</i>
1	145-4021-05	1	Handle-Lower, ASM	17:3	134-5125	1	Starter Button, 2-Sp
2	145-4004-05	1	Handle-Upper	18	140-4128	1	Clamp-Cable
3	139-1694	1	Bolt-Shoulder, HHF	19	92-2267	1	Screw-Handle
4	119-4038	2	Nut-Hex	20	139-1699	1	Washer-Flat
5	140-2367	1	Guide-Curved, LH (Rwd)	21	137-3094	1	Nut-Hex
6	140-2366	1	Guide-Curved, RH (Rwd)	23	145-1459	1	Decal - Ads, Handle
7	139-5464	1	Rod-Control, Traction	24	139-6577	2	Pin-Handle, Pp
8	139-6554	1	Lever-Traction, Rwd	25	132-4516	2	Plug-Square
9	140-4194	1	Spring-Torsion	26	137-3107	2	Screw-Handle
10	139-6569	1	Handle-Personal Pace, Curved	27	117-5976	2	Knob-Handle
11	139-6567	1	Bottom-Handle, RH	28	114-7988	1	Guide-Cable
12	139-6568	1	Bottom-Handle, LH	29	144-0249	1	Handle-Assist, Steel
13	94-4496	10	Screw-PPH	30	137-3051	2	Screw-HH
14	145-5879-03	1	Bail-Brake	31	136-8682	2	Washer-Lock
15	139-6594	1	Cable-Brake, Pp B&s	32	107-0279	4	Washer
16	145-4007	1	Cable-Traction	33	120-9683	1	Washer-Plain
17	144-3179	1	Starter Switch ASM	34	140-1324	1	Decal-Controls (60V, Start)
				99	614249	2	Tie-Cable ●

● Not illustrated

Battery Charger Assembly



Battery Charger Assembly (continued)

<i>Ref.</i>	<i>Part Number</i>	<i>Qty.</i>	<i>Description</i>	<i>Ref.</i>	<i>Part Number</i>	<i>Qty.</i>	<i>Description</i>
9		1	Charger, Rapid 60V ●	9:4	140-2193	1	Cord-Charger, CE
9:3	140-2192	1	Cord-Charger, Au/Nz	9:5	140-2194	1	Cord-Charger, UK

● Not serviced separately

Attachments and Accessories

For 21876 eTimeMaster eTM76 76cm 60V Lawn Mower

Product Name	Model/Part
Hi-Lift Replacement Blade Kit	20122P
60V 6.0 AH Battery CE	81860
60V 7.5 AH Battery CE	81875
60V Battery Charger 2 Amp CE	81802
60V Cordless Trimmer (Bare Tool).....	51830T
60V Cordless Blower (Bare Tool).....	51820T
Power Clear 21in 60V Cordless (Bare Tool).....	39901T
60v 24in Max Hedge Trimmer (Bare Tool).....	51840T
16in 60V Max Chainsaw (Bare Tool)	51850T
Traction Assist Handle Kit.....	144-6377
Fuel Stabilizer .05 oz	130-2393
Mower Cover	490-7461
Bag-Walk Behind (Toro).....	490-7318
Lawn Striping Kit with 30in Roller.....	20602

Notes:

Notes:

Notes:



Count on it.