

Hour Meter Kit

Zero-Turn-Radius Riding Mower

Model No. 147-8791

Installation Instructions

Installation

Loose Parts

Use the chart below to verify that all parts have been shipped.

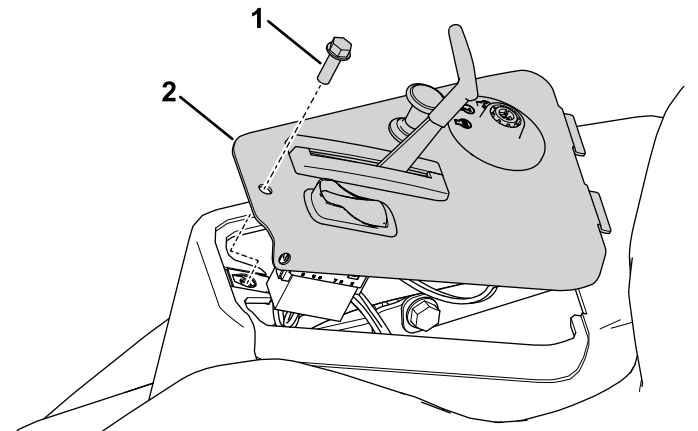
Description	Qty.	Use
No parts required	–	Prepare the machine.
Hour meter	1	Install the hour meter.

Preparing the Machine

1. Park the machine on a level surface.
2. Disengage the blade-control switch.
3. Move the motion-control levers outward to the PARK position.
4. Shut off the engine and remove the key.
5. Wait for all moving parts to stop.
6. Allow machine components to cool.

Installing the Hour Meter

1. Remove the control panel on the machine by removing the bolt and sliding the control panel forward (Figure 1).



g469077

Figure 1

1. Bolt
2. Control panel

2. Locate the cutout location for the hour meter in the control panel and cut an "X" pattern in the decal (Figure 2).



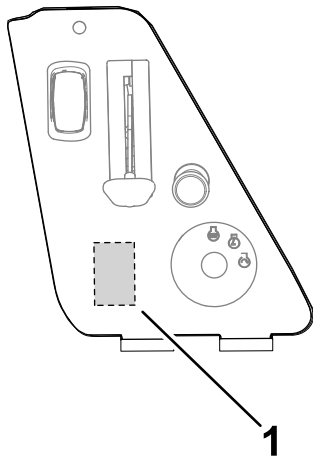


Figure 2

g468147

1. Cutout location

3. Install the hour meter into the cutout, ensuring that the hourglass symbol is facing towards the throttle (Figure 3).

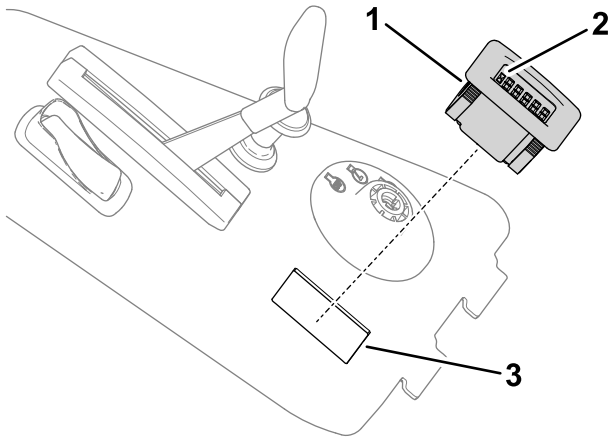


Figure 3

g468149

1. Hour meter
2. Hourglass symbol
3. Cutout in the control panel

4. Locate the main wire harness leading to the key switch and the hour-meter connector affixed to the harness (Figure 4).

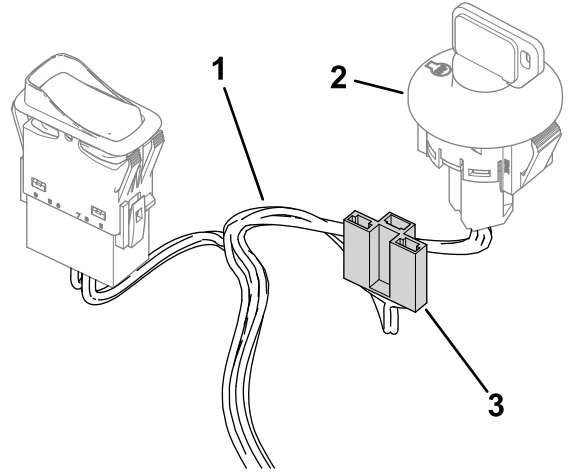


Figure 4

g468148

1. Wire harness
2. Key switch
3. Hour-meter connector

5. Connect the hour meter to the hour-meter connector.
6. Install the control panel; reverse the steps in step 1.