



# Heavy Duty Spring Kit

## TimeCutter® MyRide® Riding Mower

Model No. 161-4525

## Installation Instructions

---

### Preparing the Machine

#### Gas Models Only

1. Park the machine on a level surface.
2. Disengage the blade-control switch.
3. Move the motion-control levers outward to the **PARK** position.
4. Shut off the machine and remove the key.
5. Wait for all moving parts to stop.
6. Allow machine components to cool.
7. Disconnect the spark-plug.

### Preparing the Machine

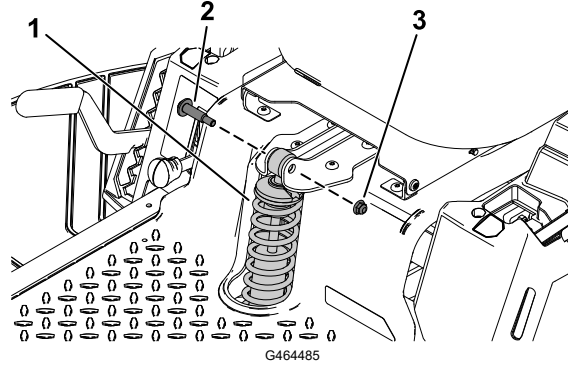
#### Electric Models Only

1. Park the machine on a level surface.
2. Disengage the blade-control switch.
3. Move the motion-control levers outward to the **NEUTRAL** position.
4. Engage the parking brake.
5. Shut off the machine and remove the key.
6. Wait for all moving parts to stop.
7. Allow machine components to cool.
8. Remove the battery packs from the machine.



# Removing the Existing Front Spring

1. Place a 38 x 89 mm (2 x 4 inches) board under the foot rest to block the front of the platform.
2. Remove the 2 shoulder bolts and 2 locknuts (3/8 inch) securing the existing front spring. Retain the hardware.
3. Remove the existing front spring.



① Front spring

③ Locknut (3/8 inch)

② Shoulder bolt

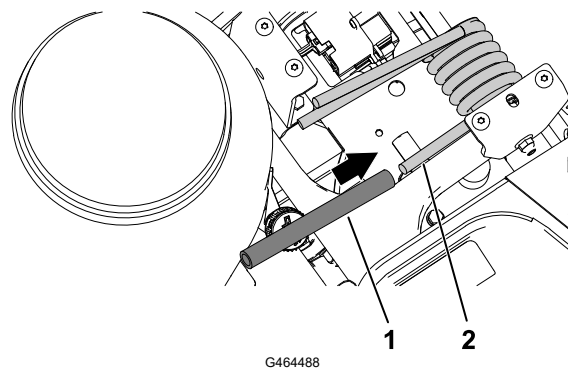
# Installing the New Heavy-Duty Spring

Install the new spring using the previously removed 2 shoulder bolts and 2 locknuts.

# Installing the Spring Spacers

1. Raise the seat.
2. Place the spring-lift tube onto the end of the torsion spring.

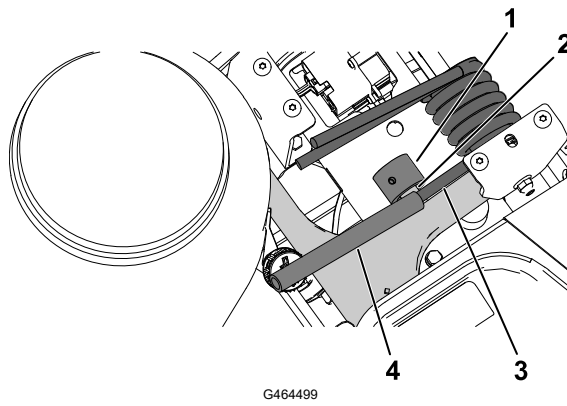
**Note:** Ensure that the spring-lift tube is securely seated on the end of the torsion spring.



① Spring-lift tube

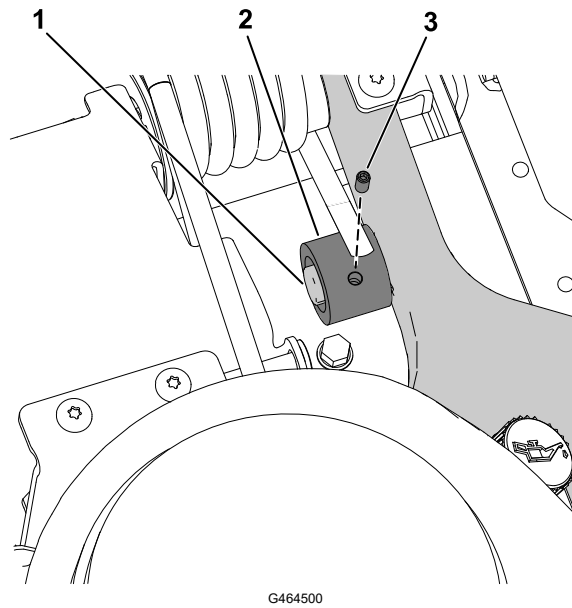
② Torsion spring

3. Slide the spring spacer onto the swing-arm post.
4. Use one hand to lift the end of the torsion spring off the swing-arm post and slide the spacer between the torsion spring and swing-arm post.



- |                  |                    |
|------------------|--------------------|
| ① Spring spacer  | ③ Torsion spring   |
| ② Swing-arm post | ④ Spring-lift tube |

5. Secure the spring spacer to the swing-arm post using the set screw.



- |                  |             |
|------------------|-------------|
| ① Swing-arm post | ③ Set screw |
| ② Spring spacer  |             |

6. Repeat this procedure on the other side.

7. Lower the seat.

