



LED Work Light Kit

Groundsmaster® e3200 Series Traction Unit with ROPS

Model No. 32307

Installation Instructions

Installation

Loose Parts

Use the chart below to verify that all parts have been shipped.

Procedure	Description	Qty.	Use
1	No parts required	–	Prepare for installation.
2	Light mount U-bolt Locknut (3/8 inch) Flange-head bolt (5/16 x 1 inch) Flange nut (5/16 inch) Work light assembly Switch bracket Switch Hole plug	2 6 12 4 4 4 1 1 1	Install the work lights and the switch.
3	Long cable tie Wire harness	6 1	Install the wire harness.

1

Preparing for Installation

No Parts Required

Procedure

1. Park the machine on a level surface.
2. Ensure that the parking brake is engaged.
3. Shut off the machine and remove the key.
4. Turn the battery-disconnect switch to the OFF position; refer to the traction unit *Operator's Manual*.

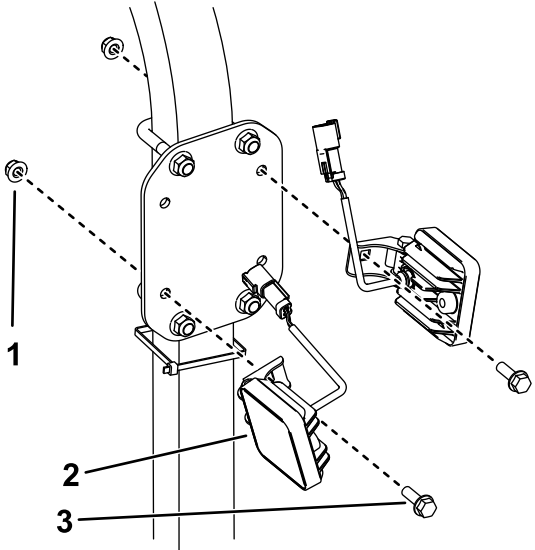


2

Installing the Work Lights and the Switch

Parts needed for this procedure:

2	Light mount
6	U-bolt
12	Locknut (3/8 inch)
4	Flange-head bolt (5/16 x 1 inch)
4	Flange nut (5/16 inch)
4	Work light assembly
1	Switch bracket
1	Switch
1	Hole plug



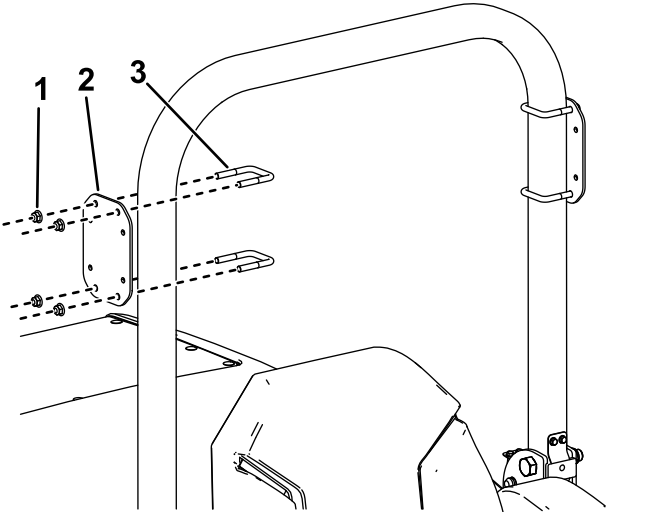
g307624

Figure 2

- 1. Flange nut (5/16 inch)
- 2. Work light assembly
- 3. Flange-head bolt (5/16 x 1 inch)

Procedure

1. Install a light mount to each side of the machine with 2 U-bolts and 4 locknuts (3/8 inch) as shown in [Figure 1](#).



g307574

Figure 1

- 1. Locknut (3/8 inch)
- 2. Light mount
- 3. U-bolt

2. Install 2 work lights assemblies to each light mount with 2 flange-head bolts (5/16 x 1 inch) and 2 flange nuts (5/16 inch) as shown in [Figure 2](#).

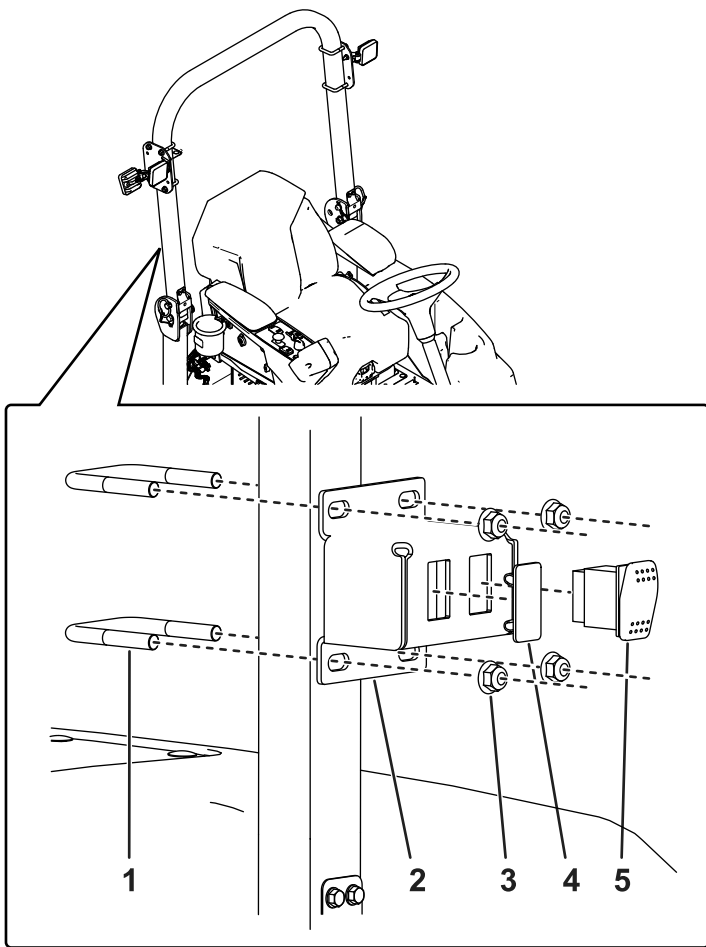


Figure 3

g453226

- 1. U-bolt
- 2. Switch bracket
- 3. Locknut (3/8 inch)
- 4. Hole plug
- 5. Switch

3

Installing the Wire Harness

Parts needed for this procedure:

6	Long cable tie
1	Wire harness

Procedure

1. Route the wire harness and loosely secure it to the roll bar with cable ties as shown in [Figure 4](#).

Important: Route the wire harness away from any sharp, hot, or moving parts; secure it with cable ties as needed.

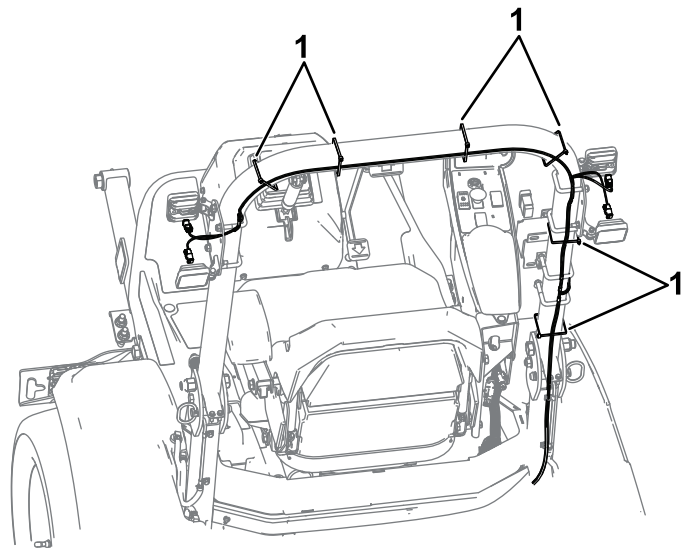


Figure 4

g453143

1. Cable ties
2. Connect the 4 square connectors to the work lights and connect the large light connector to the switch ([Figure 5](#)).

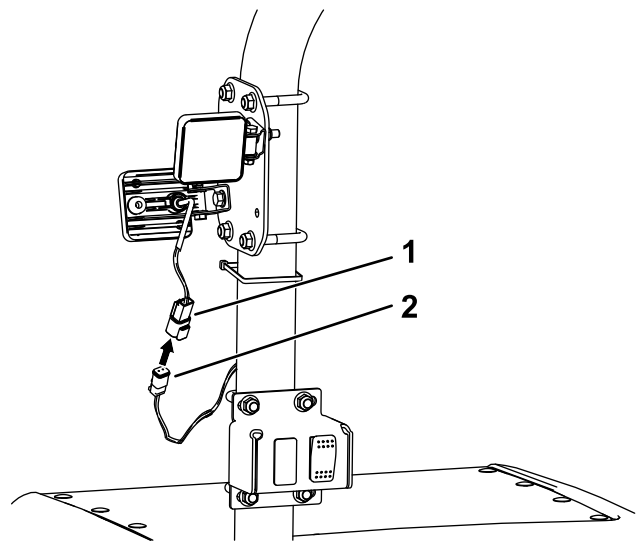


Figure 5

g307639

1. Work-light connector
2. Wire harness

3. Route the wire-harness end labeled P09 through the platform grommet ([Figure 6](#)).

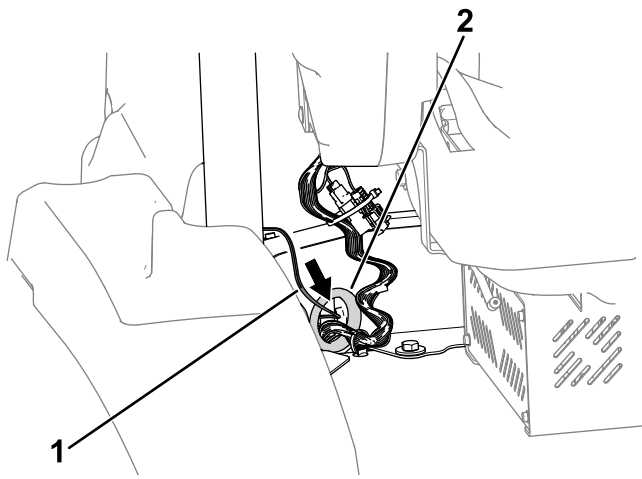


Figure 6

g453224

1. Wire harness
2. Platform grommet

4. Raise the hood and connect the P09—WORK LIGHT KIT POWER connector to the machine wire-harness connector labeled P19—WORK LIGHT KIT POWER.

Note: The P19 connector is located above the hydraulic-tank cap.

5. Tighten all cable ties and ensure that the work light harness and all connections are secure.
6. Turn the battery-disconnect switch to the ON position; refer to the traction unit *Operator's Manual*.

Operation

Using the Lights

To illuminate the work lights, press up on the light switch installed to the front of the roll bar ([Figure 7](#)).

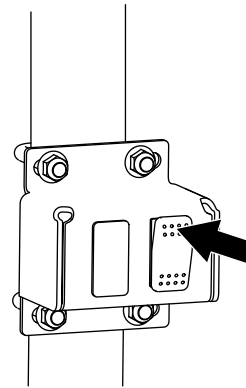


Figure 7

g453225