



## Recycler Kit

### Groundsmaster® e3200 2-Wheel Drive Traction Unit with 60in Rear Discharge Rotary Mower

Model No. 32306

## Installation Instructions

---

**1**

## Preparing the Machine

No Parts Required

### Procedure

1. Park the machine on a level surface.
2. Engage the parking brake.  
**Note:** Ensure the brake is engaged. Check the display for the parking brake symbol; refer to your *Operator's Manual*.
3. Raise the mower deck to the TRANSPORT position; refer to your *Operator's Manual*.
4. Shut off the engine and remove the key.
5. Turn the battery-disconnect switch to the OFF position; refer to the traction unit *Operator's Manual*.
6. Rotate the mower deck to the SERVICE position; refer to your *Operator's Manual*.



# 2

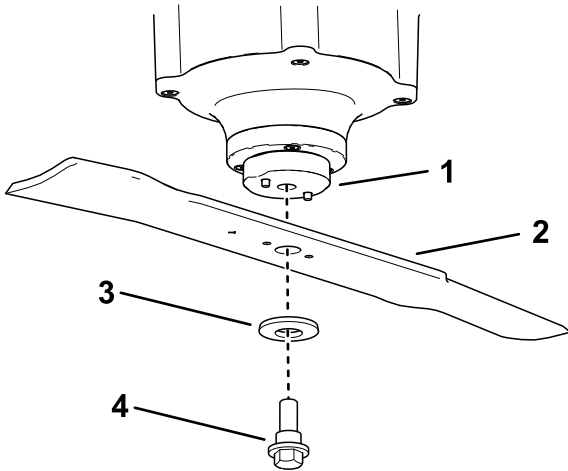
## Removing the Blades

No Parts Required

### Procedure

1. Place a wrench on the flat of the blade retainer or hold the blade end using a rag or thickly padded glove.
2. Remove the blade bolt, washer, and blade from the spindle shaft.

**Important:** Retain the parts for later installation.



g376322

Figure 1

- |                   |               |
|-------------------|---------------|
| 1. Blade retainer | 3. Washer     |
| 2. Blade          | 4. Blade bolt |

# 3

## Removing the Plugs

No Parts Required

### Procedure

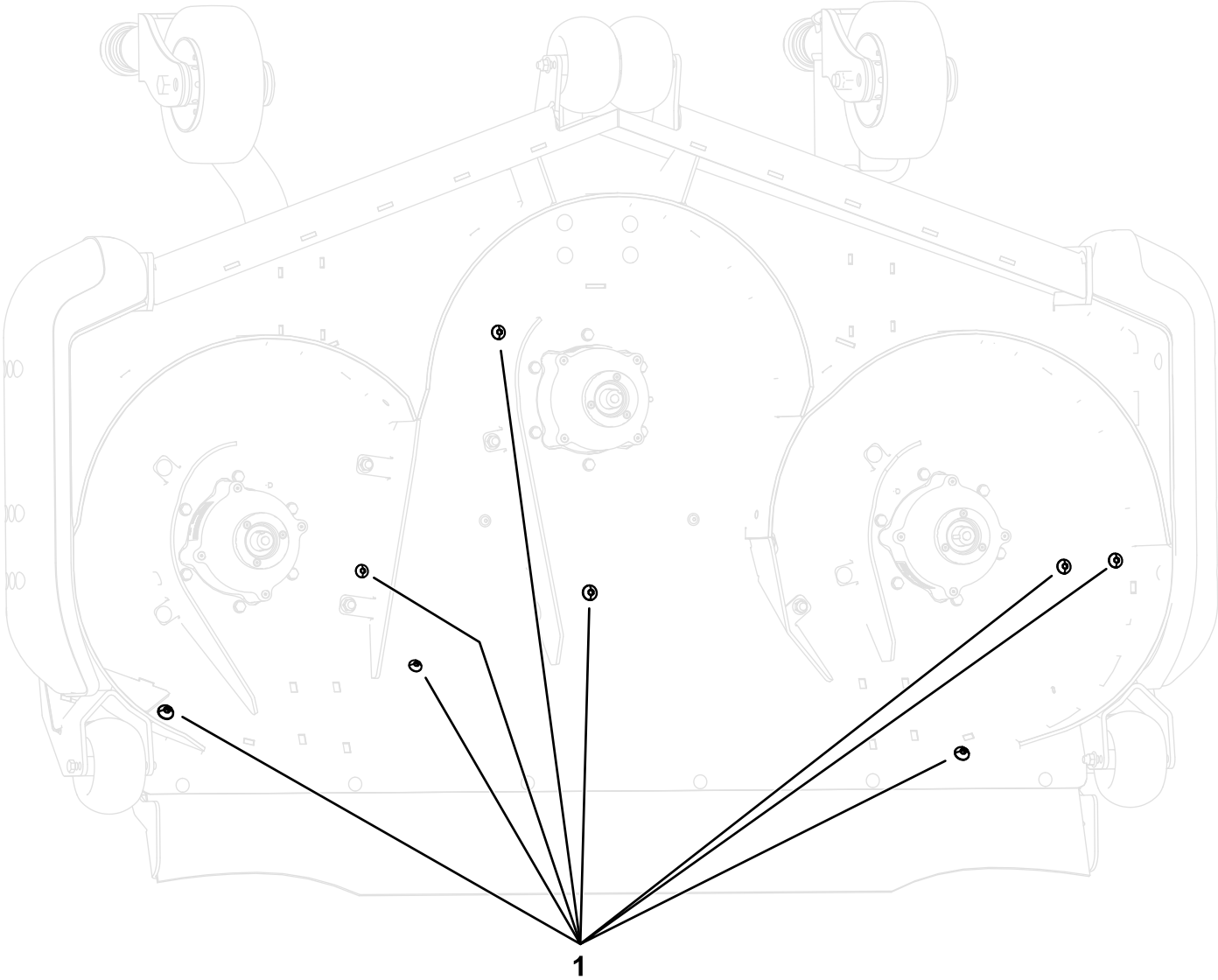


Figure 2

g454910

- 1. Plugs

# 4

## Removing the Existing Baffles

No Parts Required

### Procedure

Remove the existing baffles and fasteners from the mower deck as shown in [Figure 3](#).

**Note:** Retain the parts if you remove the recycler kit in the future.

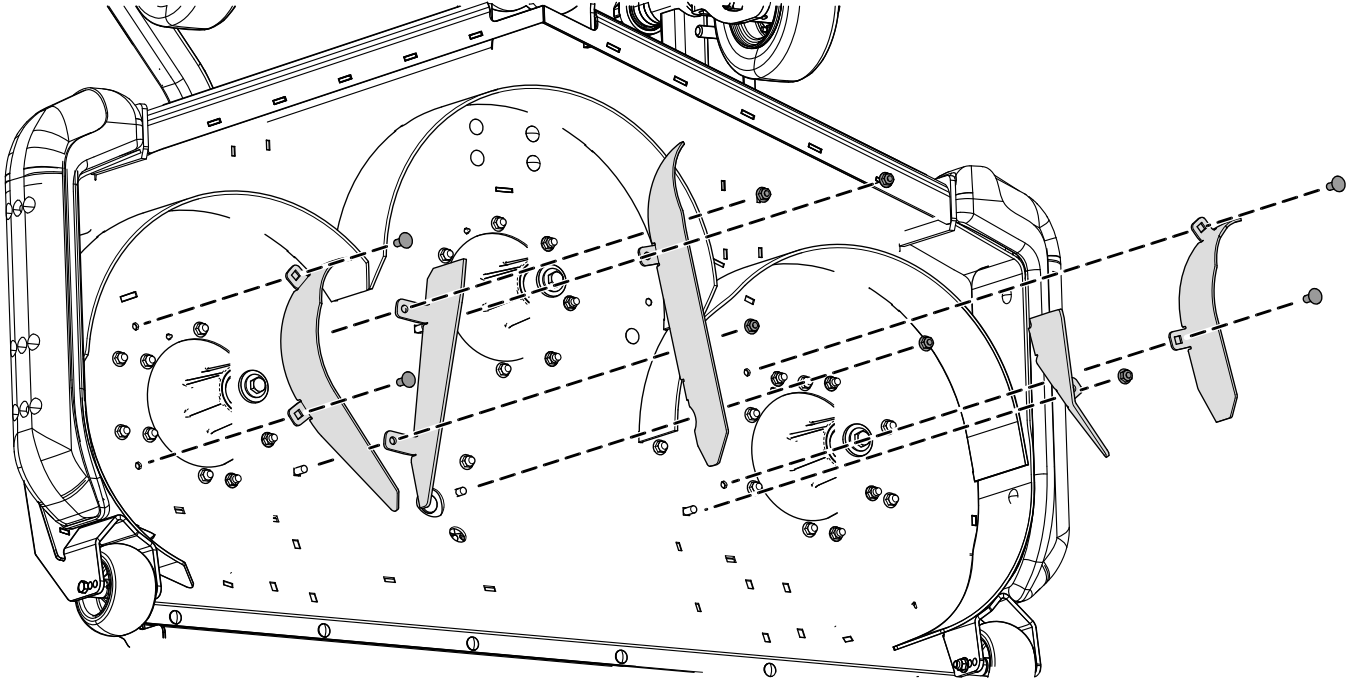


Figure 3

g308832

# 5

## Installing the Recycler Baffles

### Parts needed for this procedure:

1	Rear, right baffle
1	Rear, center baffle
1	Rear, left baffle
2	Side kicker baffle
1	Center kicker baffle
12	Locknut (3/8 inch)
12	Carriage bolt (3/8 x 7/8 inch)

### Procedure

1. Loosely secure the rear, right baffle to the mower deck using 3 carriage bolts (3/8 x 7/8 inch) and 3 locknuts (3/8 inch) as shown in Figure 4.

2. Loosely secure the rear, left baffle to the mower deck using 3 carriage bolts (3/8 x 7/8 inch) and 3 locknuts (3/8 inch) as shown in Figure 4.
3. Loosely secure the rear, center baffle to the mower deck using a carriage bolt (3/8 x 7/8 inch) up through the deck, and 1 carriage bolt (3/8 x 7/8 inch) through the left, front baffle, and locknuts (3/8 inch) as shown in Figure 4.
4. Loosely secure the rear, center baffle to the rear, right baffle using 1 carriage bolt (3/8 x 7/8 inch), and 1 locknut (3/8 inch) as shown in Figure 4.
5. Loosely secure the 2 side kicker baffles and center kicker baffle using 3 carriage bolts (3/8 x 7/8 inch) and 3 locknuts (3/8 inch) as shown in Figure 4.

**Note:** The hooked end of each kicker baffle attaches to the slot in the chamber baffle.

**Note:** You may need to loosen the mating baffle to allow the hooked end of the kicker baffle to fit correctly.

6. Plug the holes using the hardware removed in procedure 3 Removing the Plugs (page 3).

**Note:** Install carriage bolts in the square holes. Install button-head bolts in round holes.

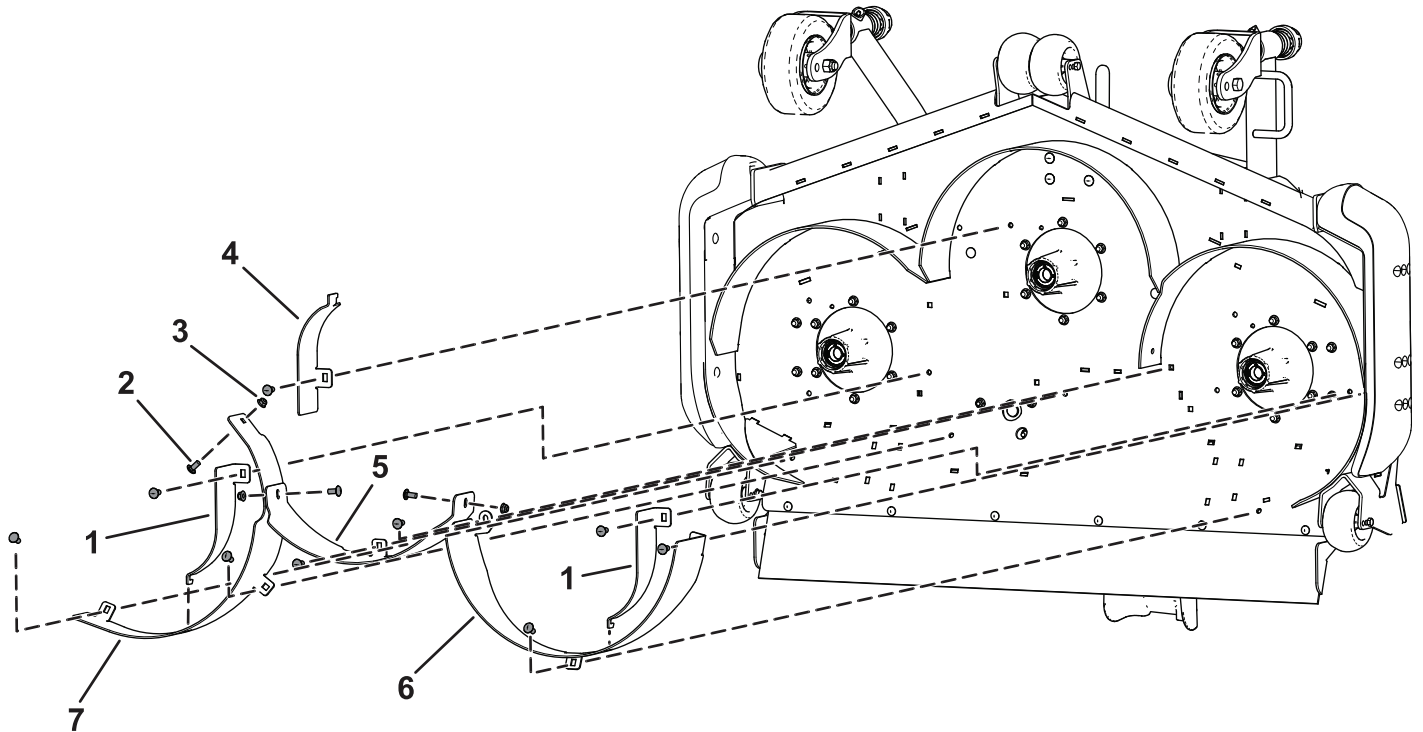


Figure 4

g306693

1. Side kicker baffle
2. Carriage bolt (3/8 x 7/8 inch)
3. Locknut (3/8 inch)
4. Center kicker baffle
5. Rear, center baffle
6. Rear, left baffle
7. Rear, right baffle

# 6

## Installing the Blades

No Parts Required

### Procedure

Install the blade, washer, and blade bolt and tighten the blade bolt to 68 to 81 N·m (50 to 60 ft-lb) as shown in [Figure 5](#).

**Important:** Ensure that the washer is oriented as shown to ensure proper cutting.

**Important:** The curved sail of the blade must point up to ensure proper cutting.

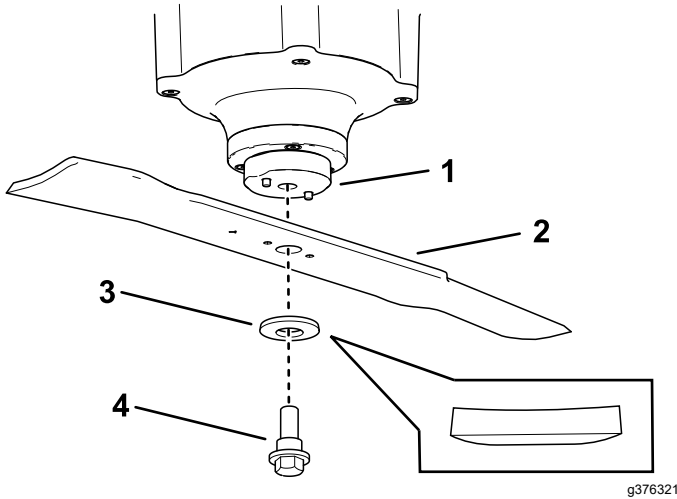


Figure 5

- |                   |               |
|-------------------|---------------|
| 1. Blade retainer | 3. Washer     |
| 2. Blade          | 4. Blade bolt |

# 7

## Tightening the Hardware

No Parts Required

### Procedure

#### ⚠ WARNING

When servicing the blade, the blade can still move even though the power source is off. The blade is sharp; contacting the blade can result in serious personal injury.

- Keep your hands and feet away from a moving blade.
  - Wear gloves when servicing the blade.
1. Tighten all nuts and bolts for the baffles.
  2. Rotate the blades and ensure that there is clearance between the blades and the baffles. If there is not, loosen the baffle(s) until there is clearance and then secure the baffle(s).

# 8

## Completing the Installation

No Parts Required

### Procedure

Rotate the mower deck to the MOWING position; refer to your *Operator's Manual*.

# 9

## Converting Back to Rear Discharge

No Parts Required

### Procedure

1. Park the machine on a level surface.
2. Engage the parking brake.  
**Note:** Ensure the brake is engaged. Check the display for the parking brake symbol; refer to your *Operator's Manual*.
3. Raise the mower deck to the TRANSPORT position; refer to your *Operator's Manual*.
4. Shut off the engine and remove the key.
5. Turn the battery-disconnect switch to the OFF position; refer to the traction unit *Operator's Manual*.
6. Rotate the mower deck to the SERVICE position; refer to your *Operator's Manual*.
7. Remove the recycler baffles.  
**Note:** Retain the hardware.
8. Install the rear-discharge baffles and fasteners  
**Note:** You must plug all open holes to prevent sand and/or other small objects from being thrown up through the deck.



**Count on it.**