



Wheel Horse® Lawn Tractor

For Tractors with 32" and 38" Mowers

Form No. 3328-647

Setup Instructions

Loose Parts

Note: Use the chart below to verify that all parts have been shipped.

DESCRIPTION	QTY.	USE
Bolts—1/4–20 x 3/4 in.	2	Installing the battery cables
Wing nuts	2	
Spring Hook	1	Installing the lift assist spring
Keys	2	Using in the ignition and KeyChoice® switches
Washout Port Adapter	1	Washing the underside of the mower
Operator's Manual	1	Reading and watching before operating the tractor
Engine Operator's Manual	1	
Safety Booklet	1	
Safety Video	1	

Activating the Battery

Warning

Battery posts, terminals, and related accessories contain lead and lead compounds, chemicals known to the State of California to cause cancer and reproductive harm. Wash hands after handling.

Purchase bulk electrolyte with 1.260 specific gravity from a local battery supply outlet.

Important Never fill the battery with electrolyte while the battery is installed in the tractor. Electrolyte could be spilled on other parts and corrode them.

1. Remove the battery and battery box from the tractor; refer to the *Operator's Manual*.

Danger

Battery electrolyte contains sulfuric acid, a deadly poison that can severely burn you and others.

- **Do not drink electrolyte and avoid contact with skin, eyes, or clothing. Wear safety glasses to shield your eyes and rubber gloves to protect your hands.**
- **Fill the battery where clean water is always available for flushing the skin.**
- **Follow all instructions and comply with all safety messages on the electrolyte container.**

2. Remove the vent caps from the battery.

- Slowly pour electrolyte into each battery cell until the electrolyte level is up to the Upper line on the battery case (Fig. 1).

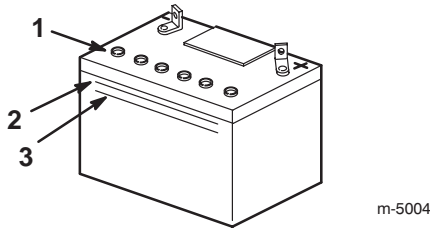


Figure 1

- Vent caps
- Upper line
- Lower line

Important Do not overfill the battery because electrolyte (sulfuric acid) can severely corrode and damage the chassis.

- Wait 5 to 10 minutes after filling the battery cells.
- Add electrolyte, if necessary, until the electrolyte level is up to the Upper line (Fig. 1) on the battery case.
- Install the battery vent caps.
- Charge the battery for 10 to 15 minutes at 25 to 30 amps or 30 minutes at 4 to 6 amps (Fig. 2). **Do not overcharge the battery.**

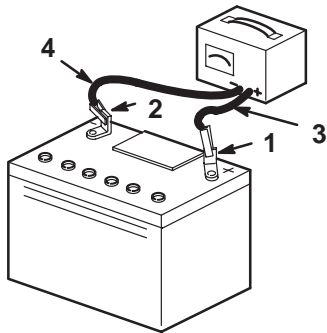


Figure 2

- Positive post
- Negative post
- Charger red (+) wire
- Charger black (-) wire

Warning

Charging the battery produces gasses that can explode.

Never smoke near the battery and keep sparks and flames away from battery.

- When the battery is fully charged, unplug the charger from the electrical outlet, then disconnect the charger leads from the battery posts (Fig. 2).

- Install the battery and battery box in the tractor and connect the battery cables; refer to the *Operator's Manual*.

Checking the Engine Oil Level

The tractor comes from the factory with oil in the engine crankcase; however, you may need to add oil. Refer to the *Operator's Manual* for oil type, viscosity, and crankcase capacity. Add only enough oil to raise the level to the Full mark on the dipstick.

Checking the Tire Pressure

Check the tires to ensure that they are inflated to the proper level. Refer to the *Operator's Manual*.

Checking the Mower Adjustment

For 32" Mowers only

The mower was leveled at the factory. However, if the mower is not cutting level, adjust the side-to-side level and the front-to-rear blade slope. See the *Operator's Manual*.

Warning

An improperly adjusted mower can cause the drive belt to engage the blade at the highest height-of-cut setting when the blade control (PTO) lever is in the Disengaged position. Operating the mower at the highest height-of-cut setting during or soon after setup may expose you or others to a rotating blade, causing injury or death.

Never put your hands or feet under the mower or through any openings in the mower.

To ensure that the mower is properly functioning at the highest height-of-cut setting during or soon after setup, do the following:

- Raise the mower to the highest height-of-cut setting.
- Ensure that the blade control (PTO) lever is in the Disengaged position.
- Start the engine and have someone check if the drive belt engages or tries to engage the blade.
- If the drive belt tries to engage or engages the blade, operate the mower for several minutes at different height-of-cut settings.

Note: The length of the long rod extending out of the front of the adjusting block on the sides of the chassis (Fig. 3) is set to 3/4 in. (19 mm) at the factory.

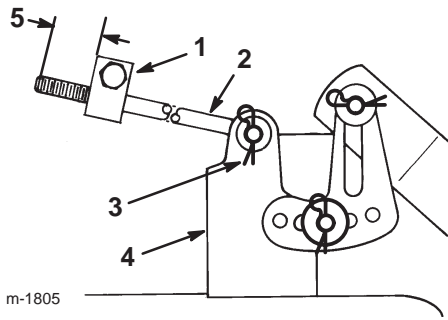


Figure 3

- | | |
|------------------------------|-------------------------------------|
| 1. Adjusting block | 4. Mower mount |
| 2. Long rod | 5. Length of long rod extending out |
| 3. Hairpin cotter and washer | |

Lubricating the Tractor

Ensure that all of the necessary points on the tractor are lubricated; refer to the *Operator's Manual*.

Checking the Safety Interlock System

Refer to the *Operator's Manual*.

Purging the Hydro Transaxle

For Hydro Drive Tractors only

Shipping and handling can introduce air into the hydro transaxle. For proper performance, remove all trapped air.

1. Move the tractor to a flat, level surface.
2. Move the drive control in the Push position (Fig. 4).

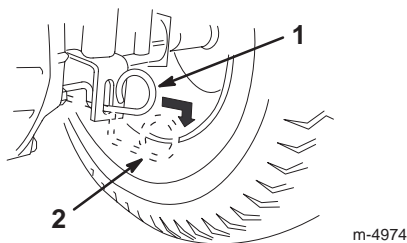


Figure 4

- | | |
|---------------------|------------------|
| 1. Operate position | 2. Push position |
|---------------------|------------------|

3. Run the engine at a low idle and move the traction control pedal forward for 5 seconds, then reverse for 5 seconds. Repeat this step 3 times.

4. Move the drive control in the Operate position (Fig. 4) and drive the tractor forward and reverse for about 5 feet (1.5 m) each way. Repeat this step 3 times.

Checking the Hydro Neutral Position

For Hydro Drive Tractors only

Ensure that the neutral position is set properly. If the tractor moves when the traction control pedal is not depressed, adjust the neutral position.

1. Run the engine at a low idle and move the traction control pedal forward, then release it.
2. Move the traction control pedal to reverse, then release. If the tractor moves while it is in the Neutral position, do the following:
3. Run the tractor for 5 to 10 minutes to warm up the transaxle.
4. Disengage the blade (PTO).
5. Set the parking brake.
6. Stop the engine and wait for all moving parts to stop.
7. Remove the ignition key.
8. Raise the right rear wheel off the ground and support it with a jack stand.

Note: Ensure that the left rear wheel is on the ground.

! **Danger** !

Mechanical or hydraulic jacks may fail to support the tractor and cause a serious injury.

- Use jack stands when supporting the tractor.
- Do not use hydraulic jacks.

Note: To gain access to the adjusting puck (Fig. 5), you may need to remove the tire.

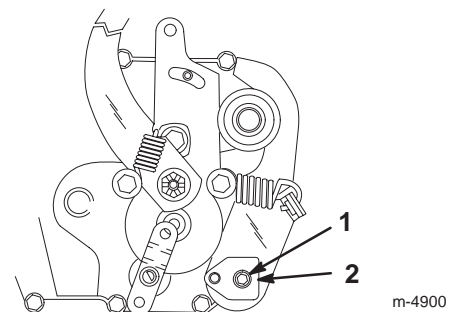


Figure 5

- | | |
|-------------------------|-------------------|
| 1. Adjusting puck screw | 2. Adjusting puck |
|-------------------------|-------------------|

9. Loosen the adjusting puck screw (Fig. 5).
10. Start the engine and run it at full throttle.
11. Rotate the adjusting puck in both directions until you find the midpoint where the axle no longer rotates forward or reverse.
12. Hold the puck with an adjustable wrench so that it will not move and torque the adjusting puck screw to 21 to 27 ft-lb (28 to 36 N•m).
13. Stop the engine and wait for all moving parts to stop.
14. Remove the ignition key.
15. Lower the tractor from the jack stand.
16. Check the adjustment again by repeating step 1.

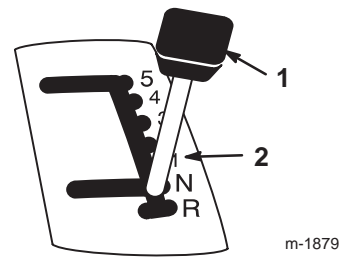


Figure 7

1. Ground speed lever
2. Numbers

1. If either of the above conditions exist, turn the engine off and ensure that the belt guides are no more than 1/8 inch away from the engine and the transmission pulleys.
2. Check the cable tension. The cable should be taut and have 1/2 in. (13 mm) movement when you apply a slight pressure to the cable (Fig. 8).

Checking the Traction Control Pedal

For Hydro Drive Tractors only

You can adjust the traction control pedal for optimum forward and reverse speeds.

1. Loosen the screws below the right footrest.
2. Slide the pedal forward for a faster reverse speed or backward for a faster forward speed (Fig. 6).

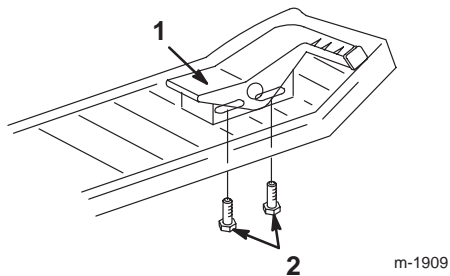


Figure 6

1. Traction control pedal
2. Adjusting screws

3. Tighten the screws.
4. Check the traction control pedal.

Checking the Shift Cable Adjustment

For Gear Drive Tractors only

Adjust the shift cable if either the ground speed lever does not shift firmly toward the numbers on the shift plate when you release the lever or if it is difficult to shift on-the-go (Fig. 7).

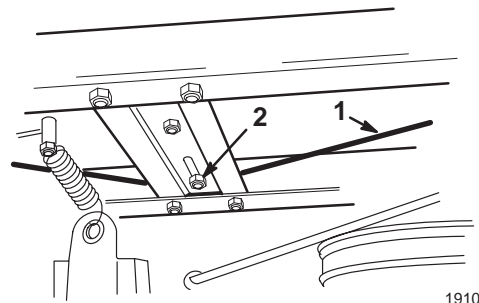


Figure 8

1. Cable
2. Cable guide

3. Move the ground speed lever and note the gap between the lever and the edge of the gate. There should be about 1/4 in. (6 mm) of free play before the cable is taut.
4. Adjust the cable tension by loosening the front cable guide located on tractor brace above the pulley.
5. Slide the guide sideways as needed for proper tension (Fig. 8).

Test Driving the Tractor

To ensure that all electrical and mechanical systems are operating properly, see the *Operator's Manual*.