



**Count on it.**

**Parts Catalog**

**Concrete Breaker  
Compact Tool Carriers**

Model No. 23136—Serial No. 322000001 and Up



# Ordering Replacement Parts

To order replacement parts, please supply the part number, the quantity, and the description of each part desired.

## Understanding Reference Numbers

Each identified part in an illustration has a reference number. The reference number for a part also appears in the parts list, along with other information about the part.

This catalog uses two special reference number formats, one to indicate parts in a service assembly and another to indicate the quantity of a given part in an illustration.

## Service Assembly Reference Numbers

Parts in service assemblies have reference numbers in the form a:b. The a represents the reference number of the entire service assembly and the b represents a sequential number unique to each part within the service assembly.

For example, a wheel assembly might be identified by reference number 6, the tire by 6:1, the valve by 6:2, and the wheel by 6:3. When you order the assembly identified by reference number 6, you receive all parts identified by reference numbers 6:1, 6:2, and 6:3. However, you may also order any part individually. Reference numbers of this type appear in illustration and in parts lists.

## Reference Numbers Indicating Quantity

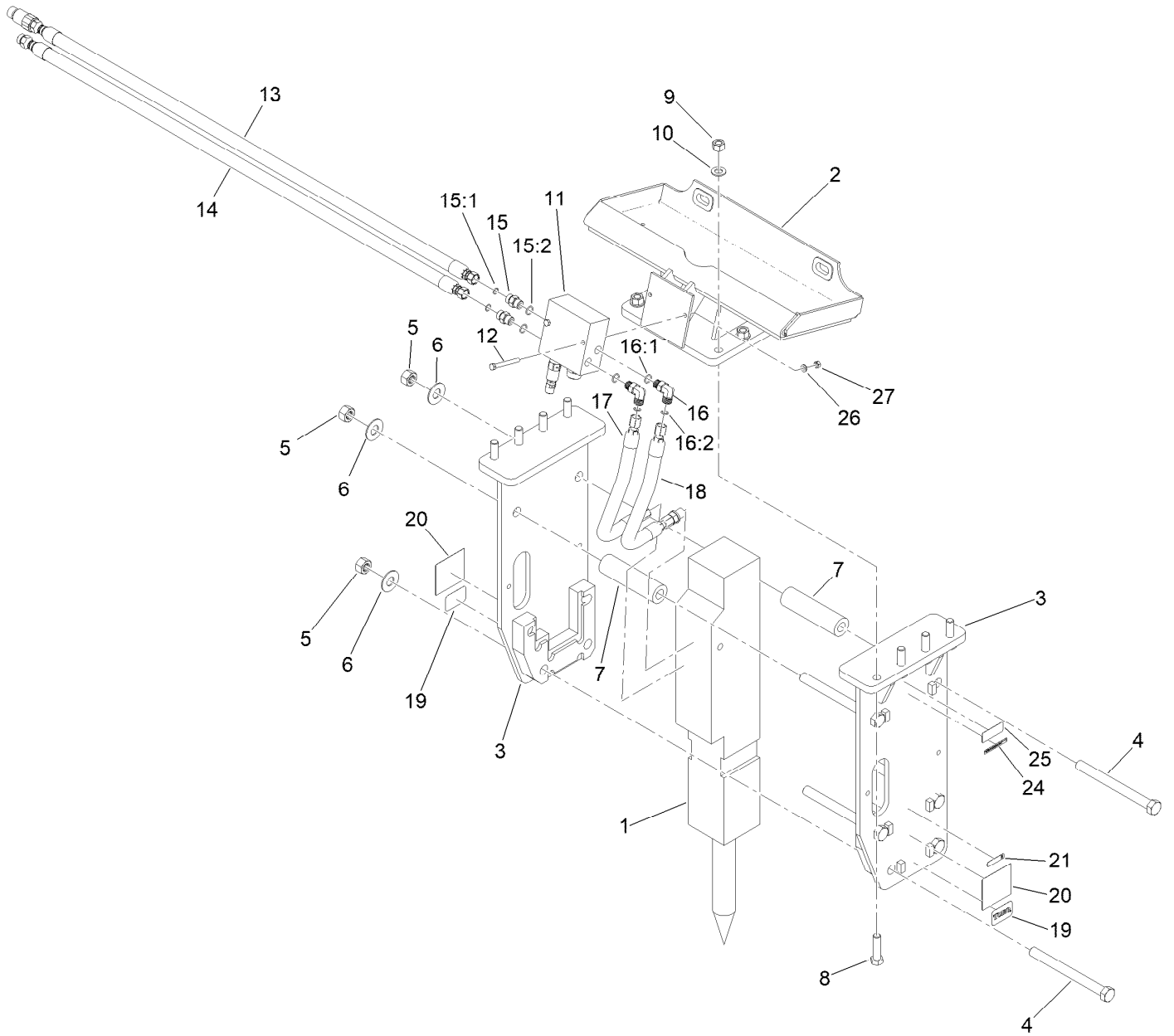
In an illustration, if a reference number indicates more than one part, the reference number has the form nX y. The n represents the quantity of the part, the X is the multiplication symbol, and the y represents the reference number.

For example, in an illustration, the reference number 2X 37 means that two of the parts identified by reference number 37 are indicated.

# Contents

Breaker Attachment Assembly ..... 4  
Breaker Assembly No. 145-6902 ..... 6  
Attachments and Accessories ..... 8

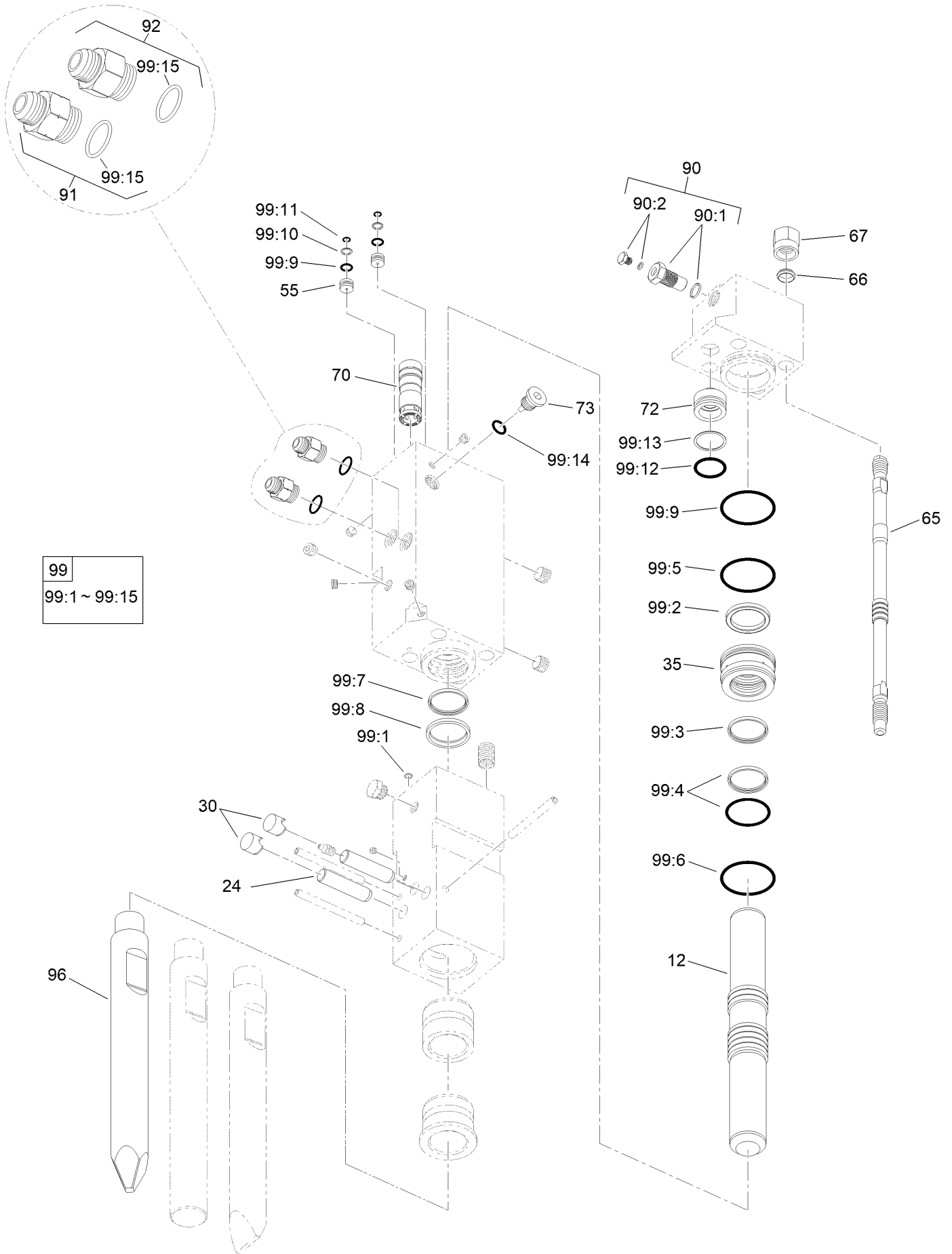
# Breaker Attachment Assembly



## Breaker Attachment Assembly (continued)

<i>Ref.</i>	<i>Part Number</i>	<i>Qty.</i>	<i>Description</i>	<i>Ref.</i>	<i>Part Number</i>	<i>Qty.</i>	<i>Description</i>
1	145-6902	1	Breaker	15:1	237-30	1	O-Ring
2	145-6903	1	Plate - Attachment	15:2	237-79	1	O-Ring
3	145-6904	1	Plate - Side, Set	16	340-98	2	Fitting-Elbow, 90 DEG
4	145-6907	6	Bolt	16:1	237-79	1	O-Ring
5	145-6908	6	Nut	16:2	237-30	1	O-Ring
6	145-6909	6	Washer	17	147-1934	1	Hose-HYD, HP
7	145-6910	2	Spacer	18	147-1935	1	Hose-HYD, HP
8	145-6911	8	Bolt	19	98-3206	2	Decal
9	145-6912	8	Nut	20	145-3753	2	Decal-Warning, Breaker
10	145-6913	8	Washer	21	145-3751	1	Decal-Grease
11	145-6914	1	Manifold - Control, Flow	24	133-8061	1	Decal-Warning
12	145-6915	2	Bolt	25	145-3752	1	Decal-Warning, Pressure
13	147-1932	1	Hose-HYD, HP	26	145-6919	2	Washer
14	147-1933	1	Hose-HYD, HP	27	145-6920	2	Nut
15	340-4	2	Fitting-Straight				

# Breaker Assembly No. 145-6902



99
99:1 ~ 99:15

## Breaker Assembly No. 145-6902 (continued)

<i>Ref.</i>	<i>Part Number</i>	<i>Qty.</i>	<i>Description</i>	<i>Ref.</i>	<i>Part Number</i>	<i>Qty.</i>	<i>Description</i>
12	147-1902	1	Piston	99	147-1918	1	Kit - Seal
24	147-1904	2	Pin - Retainer	99:1		1	O-Ring ●
30	147-1905	2	Plug - Retainer, Pin	99:2		1	Gas Seal ●
35	147-1906	1	Bushing - Packing	99:3		1	Oil Seal ●
55	147-1907	2	Plug - Cylinder	99:4		1	Slide Ring S ●
65	147-1908	4	Bolt - Side	99:5		2	O-Ring ●
66	147-1909	4	Ring - Bolt, Side	99:6		1	O-Ring ●
67	147-1910	4	Nut - Bolt, Side	99:7		1	Oil Seal ●
70	147-1911	1	Valve - Control	99:8		1	Dust Seal ●
72	147-1912	1	Cap - Valve, Control	99:9		2	O-Ring ●
73	147-1913	1	Plug - Choke	99:10		2	O-Ring ●
90	147-1914	1	Kit - Valve, Gas	99:11		2	Back Up Ring ●
90:1		1	Gas Valve Body Cp ●	99:12		1	O-Ring ●
90:2		1	Gas Valve Plug Cp ●	99:13		1	Back Up Ring ●
91	147-1915	1	Adapter - Hose, In	99:14		1	O-Ring ●
92	147-1916	1	Adapter - Hose, Out	99:15		2	O-Ring ●
96	147-1917	1	Moil Point				

● Not serviced separately

# Attachments and Accessories

## For 23136 Concrete Breaker Compact Tool Carriers

<b>Product Name</b>	<b>Model/Part</b>
Chisel Point .....	161-0375
Blunt Tool .....	161-0376
Frost Wedge .....	161-0377
Asphalt Cutter .....	161-0378
Tamping Pad .....	161-0379
Pin - Spring .....	161-0380



**Notes:**

**Notes:**

**Notes:**



**Count on it.**