



**Count on it.**

**Parts Catalog**

**8in Earth Auger**

Model No. 58630—Serial No. 321000001 and Up



# Ordering Replacement Parts

To order replacement parts, please supply the part number, the quantity, and the description of each part desired.

## Understanding Reference Numbers

Each identified part in an illustration has a reference number. The reference number for a part also appears in the parts list, along with other information about the part.

This catalog uses two special reference number formats, one to indicate parts in a service assembly and another to indicate the quantity of a given part in an illustration.

## Service Assembly Reference Numbers

Parts in service assemblies have reference numbers in the form a:b. The a represents the reference number of the entire service assembly and the b represents a sequential number unique to each part within the service assembly.

For example, a wheel assembly might be identified by reference number 6, the tire by 6:1, the valve by 6:2, and the wheel by 6:3. When you order the assembly identified by reference number 6, you receive all parts identified by reference numbers 6:1, 6:2, and 6:3. However, you may also order any part individually. Reference numbers of this type appear in illustration and in parts lists.

## Reference Numbers Indicating Quantity

In an illustration, if a reference number indicates more than one part, the reference number has the form nX y. The n represents the quantity of the part, the X is the multiplication symbol, and the y represents the reference number.

For example, in an illustration, the reference number 2X 37 means that two of the parts identified by reference number 37 are indicated.

# Contents

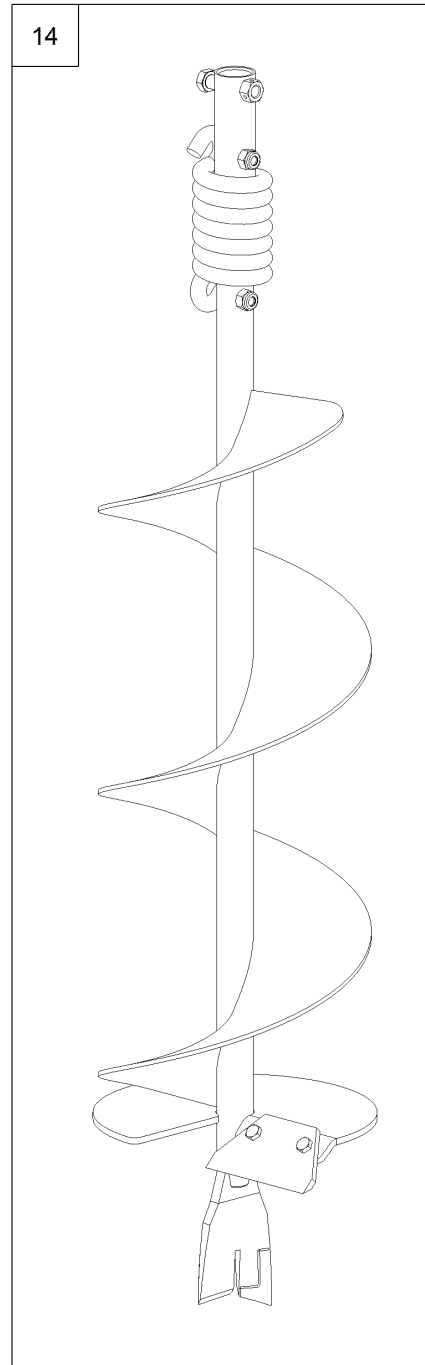
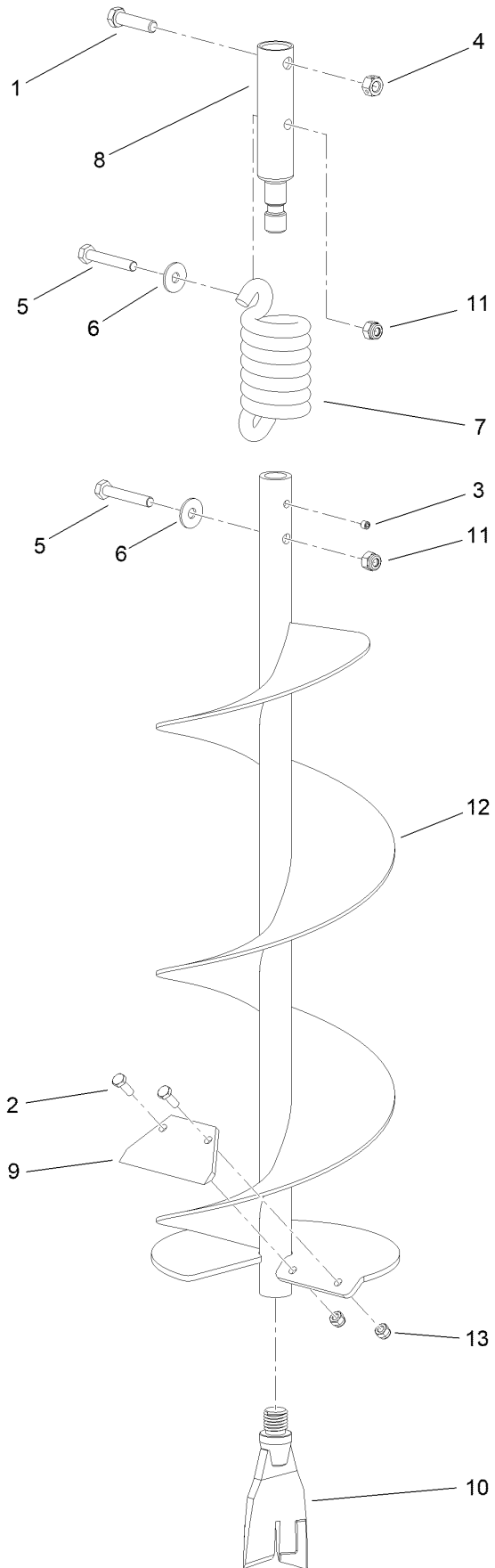
Powerhead Assembly ..... 4  
Auger Assembly ..... 6



## Powerhead Assembly (continued)

<i>Ref.</i>	<i>Part Number</i>	<i>Qty.</i>	<i>Description</i>	<i>Ref.</i>	<i>Part Number</i>	<i>Qty.</i>	<i>Description</i>
1	144-5145	1	Cable ASM	12	144-5222	2	Pin-Dowel
2	144-5204	1	Drum-Clutch	13	144-5223	1	Gasket-Transmission
3	144-5206	1	Transmission ASM	14	144-5224	3	Bearing-Ball
4	144-4776	2	Screw-PTH	15	144-5225	2	Bearing-Ball
5	144-5215	2	Trigger ASM	16	144-5021	3	Ring-Retaining
6	144-5216	1	Handlebar	17	144-5226	2	Screw-SHCS
7	144-5217	1	Case-Transmission Upper	18	144-5227	4	Screw-SHCS
8	144-5218	1	Case-Transmission Lower	19	144-5228	4	Screw-HH
9	144-5219	1	Gear-44T	20	144-5229	1	Pinion-10T
10	144-5220	1	Shaft-Output	21	144-5230	1	Pinion-7T
11	144-5221	1	Gear-48T				

# Auger Assembly



## Auger Assembly (continued)

<i>Ref.</i>	<i>Part Number</i>	<i>Qty.</i>	<i>Description</i>	<i>Ref.</i>	<i>Part Number</i>	<i>Qty.</i>	<i>Description</i>
1	144-5149	1	Screw-HHCS	8	144-5209	1	Top-Shock
2	144-4981	2	Screw-HHCS	9	144-5210	1	Blade
3	144-5201	2	Screw-Scpc	10	144-5211	1	Fishtail Point
4	144-5202	1	Nut-Hex	11	144-4738	2	Nut-Hex
5	144-5203	2	Screw-HHCS	12	144-5214	1	Auger-8 Inch
6	144-4936	2	Washer-Flat	13	144-4836	2	Nut-Hex
7	144-5208	1	Spring-Shock	14	147-4294	1	Auger ASM



**Count on it.**