

Striper Kit

For Radius® 3-Blade Models and Quest® X-Series Models

Kit No. 146-0404

Safety Alert Symbol

This Safety Alert Symbol (Figure 1) is used both in this instruction sheet and on the machine to identify important safety messages which must be followed to avoid accidents

This symbol means: **ATTENTION! BECOME ALERT! YOUR SAFETY IS INVOLVED!**



g000502

Figure 1

Safety Alert Symbol

The safety alert symbol appears above information which alerts you to unsafe actions or situations and will be followed by the word **DANGER**, **WARNING**, or **CAUTION**.

DANGER: Indicates an imminently hazardous situation which, if not avoided, **Will** result in death or serious injury.

WARNING: Indicates a potentially hazardous situation which, if not avoided, **Could** result in death or serious injury.

CAUTION: Indicates a potentially hazardous situation which, if not avoided, **May** result in minor or moderate injury.

This manual uses two other words to highlight information. **Important** calls attention to special mechanical information and **Note** emphasizes general information worthy of special attention.

⚠ WARNING

While maintenance or adjustments are being made, someone could start the engine. Accidental starting of the engine could seriously injure you or other bystanders.

Remove the key from the ignition switch, engage parking brake, and pull the wire(s) off the spark plug(s) before you do any maintenance. Also push the wire(s) aside so it does not accidentally contact the spark plug(s).

Note: Determine the left and right sides of the machine from the normal operating position.

Note: Park the machine on a level surface. Make sure all moving parts have stopped, parking brake is engaged, the key has been removed, and the spark plug wire has been disconnected. Allow the machine to cool before starting these instructions.



Loose Parts

Use the chart below to verify that all parts have been shipped.

Item	Part No.	Description	Qty
1	146-0405-01	Bracket-Striper	1
2	142-6311	Flap-Striper	1
3	142-6310-03	Strap-Striper	1
4	98-5975	Washer-Spring Disc 3/8	4

Item	Part No.	Description	Qty
6	3290-357	Nut-Whizlock 3/8-16	8
7	3231-2	Bolt-Carriage 3/8-16 x 1	4
8	3234-24	Screw-HHF 3/8-16 x 1 1/4	4

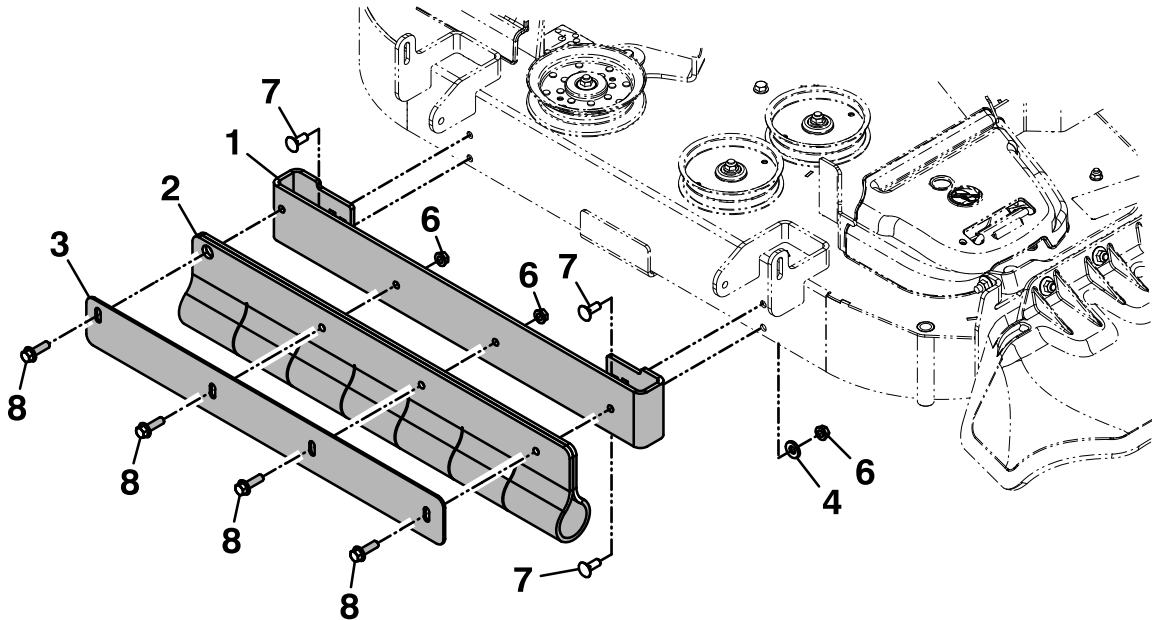


Figure 2
Quest Deck Shown

g438353

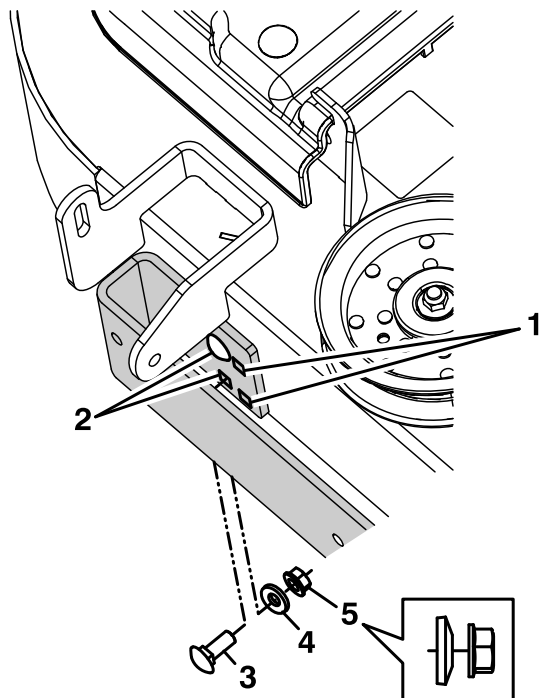
Installation Instructions

1. Make sure all moving parts have stopped, parking brake is engaged, the key has been removed, and the spark plug wire has been disconnected.
2. Raise the deck to the transport position.
3. Clean the back of the mower deck.
4. Using four 3/8-16 x 1 inch screws, four spring disc washers, and four 3/8 inch nuts, install the striper bracket to the deck as shown in [Figure 2](#) and [Figure 3](#).

Important: To avoid damage to landscaping and the striping bracket, avoid close trimming with the striping kit installed. Replace the wiper yearly, or more often as wear requires.

Important: Avoid obstacles that can damage the kit. Temporarily lift the deck to the transport position when performing turns or moving in reverse.

Important: Raise the mower deck with the striping kit installed to the transport position when not in use to avoid damaging the wiper.



g438366

Figure 3
Quest Deck Shown

- | | |
|--------------------------|-----------------------|
| 1. Inner mounting holes | 4. Spring disc washer |
| 2. Outer mounting holes | 5. 3/8 inch nut |
| 3. 3/8-16 x 1 inch screw | |

- For Radius Models: Use the two inner mounting holes.
 - For Quest Models: Use the two outer mounting holes.
5. Place the flap against the striper bracket and secure using the strap and four 3/8-16 x 1 1/4 inch screws and four 3/8 inch nuts. Make sure the heads of the screws are mounted to the outside of the striper bracket as shown in [Figure 2](#).

Important: Applying excessive downward pressure with the striping bracket may damage turf and the striping kit.