



Count on it.

Parts Catalog

Walk Behind Edger

Model No. 58610—Serial No. 322000001 and Up



Ordering Replacement Parts

To order replacement parts, please supply the part number, the quantity, and the description of each part desired.

Understanding Reference Numbers

Each identified part in an illustration has a reference number. The reference number for a part also appears in the parts list, along with other information about the part.

This catalog uses two special reference number formats, one to indicate parts in a service assembly and another to indicate the quantity of a given part in an illustration.

Service Assembly Reference Numbers

Parts in service assemblies have reference numbers in the form a:b. The a represents the reference number of the entire service assembly and the b represents a sequential number unique to each part within the service assembly.

For example, a wheel assembly might be identified by reference number 6, the tire by 6:1, the valve by 6:2, and the wheel by 6:3. When you order the assembly identified by reference number 6, you receive all parts identified by reference numbers 6:1, 6:2, and 6:3. However, you may also order any part individually. Reference numbers of this type appear in illustration and in parts lists.

Reference Numbers Indicating Quantity

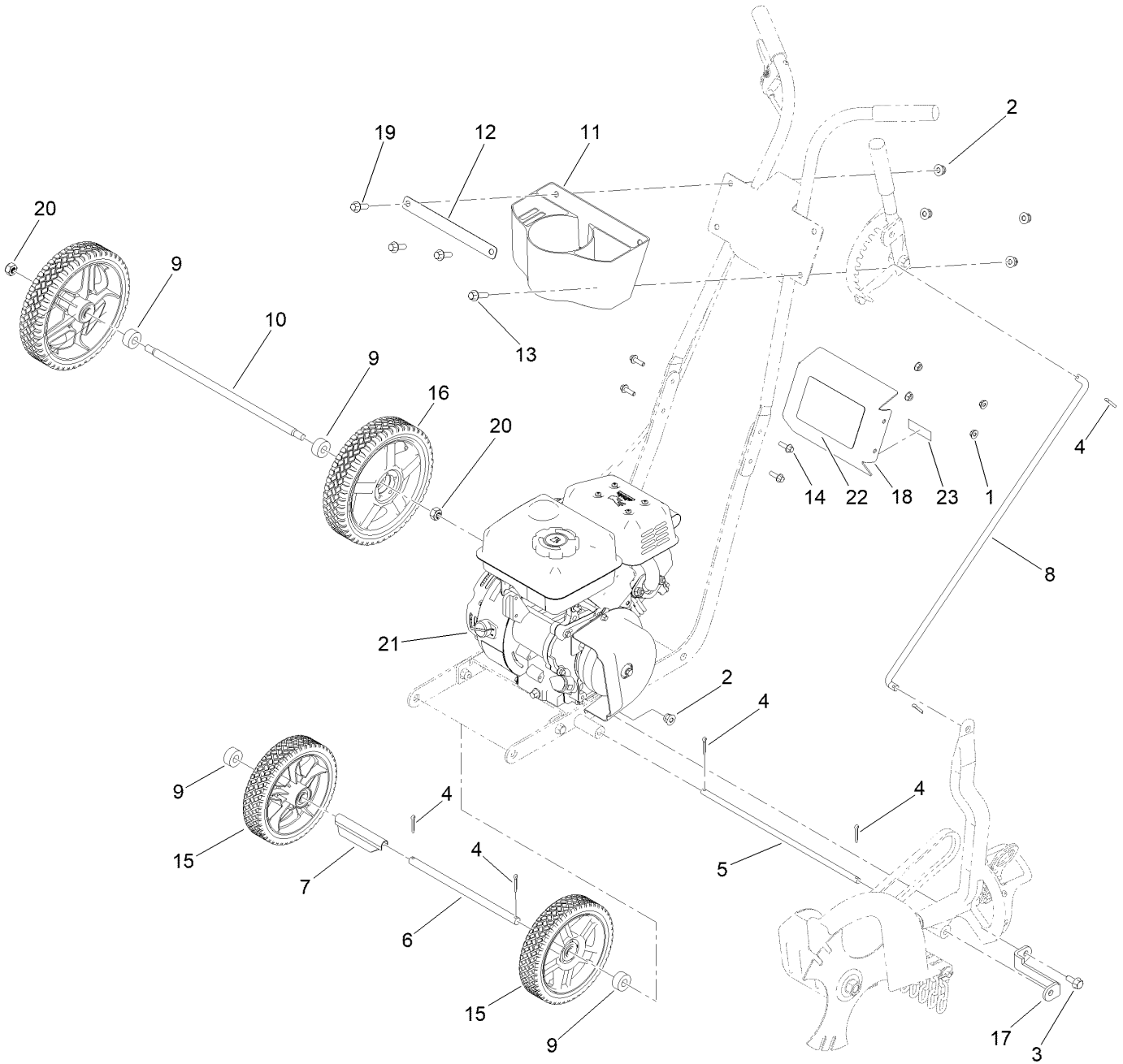
In an illustration, if a reference number indicates more than one part, the reference number has the form nX y. The n represents the quantity of the part, the X is the multiplication symbol, and the y represents the reference number.

For example, in an illustration, the reference number 2X 37 means that two of the parts identified by reference number 37 are indicated.

Contents

- Chassis and Wheels Assembly 4
- Engine Mount and Wheel Bearing Assembly 6
- Cutting Head Assembly 8
- Handles and Controls Assembly 10
- Engine Assembly No. 147-4290 12
- Clutch Assembly 14

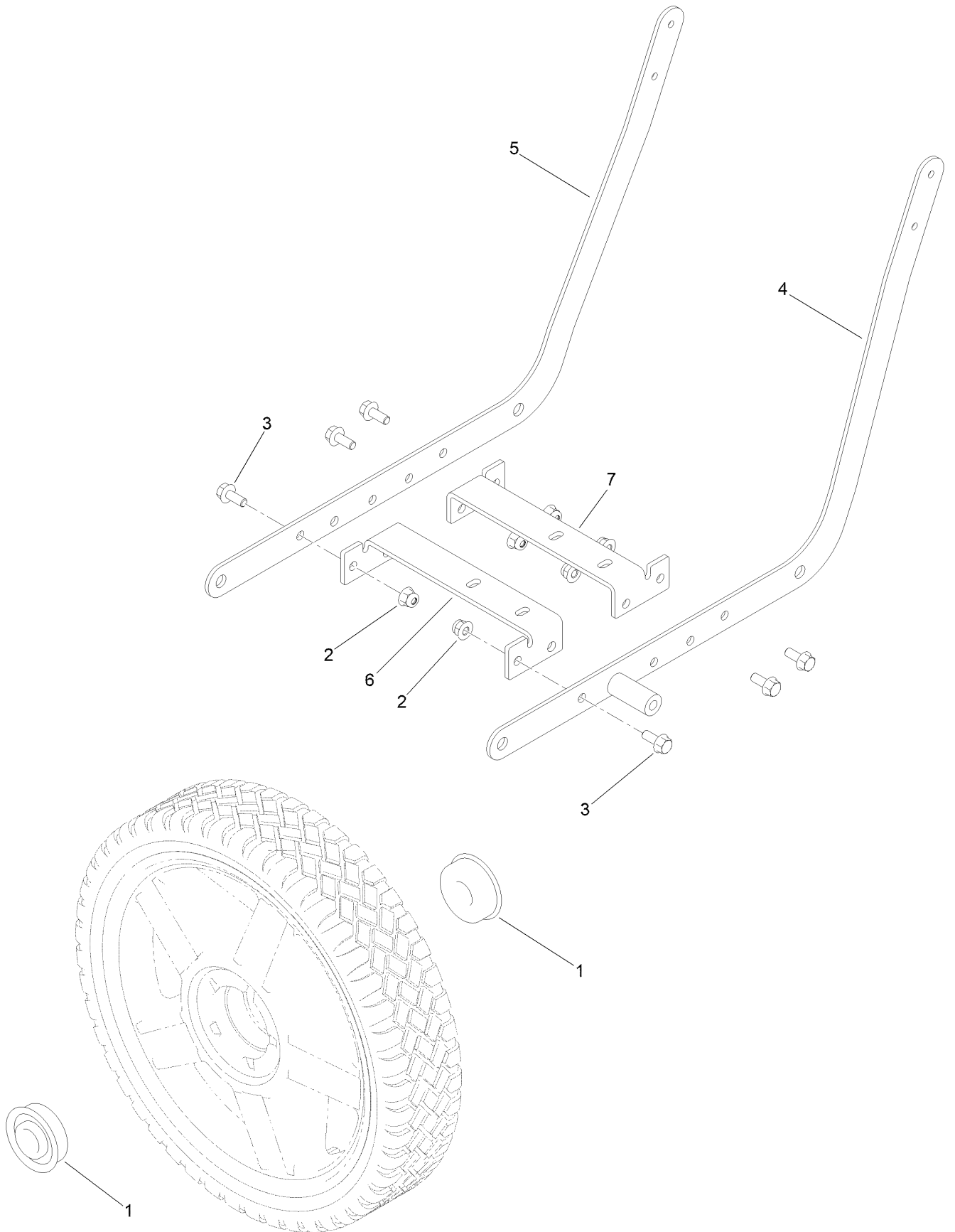
Chassis and Wheels Assembly



Chassis and Wheels Assembly (continued)

<i>Ref.</i>	<i>Part Number</i>	<i>Qty.</i>	<i>Description</i>	<i>Ref.</i>	<i>Part Number</i>	<i>Qty.</i>	<i>Description</i>
1	144-5022	4	Nut-Hex	13	147-4250	1	Screw-HSF
2	144-4789	5	Nut-Hex	14	144-5127	4	Screw-RHF
3	144-4784	1	Screw-HHF	15	147-4262	2	Wheel ASM, 175MM
4	144-5769	6	Pin-Cotter	16	147-4263	2	Wheel ASM, 205MM
5	144-5771	1	Pivot-Height	17	147-4264	1	Bracket-Pivot
6	144-5773	1	Axle-Front	18	147-4267	1	Panel-Toro
7	144-5776	1	Spacer-Wheel	19	147-4271	3	Screw-HSF
8	144-5777	1	Rod-Height	20	144-4964	2	Nut-Hex
9	144-5781	4	Spacer-Axle	21	147-4290	1	Engine-Toro
10	144-5787	1	Axle-Rear	22	147-4280	1	Decal-Dash
11	144-5793	1	Holder	23	147-4283	1	Decal-Warnings
12	144-5797	1	Strap-Holder				

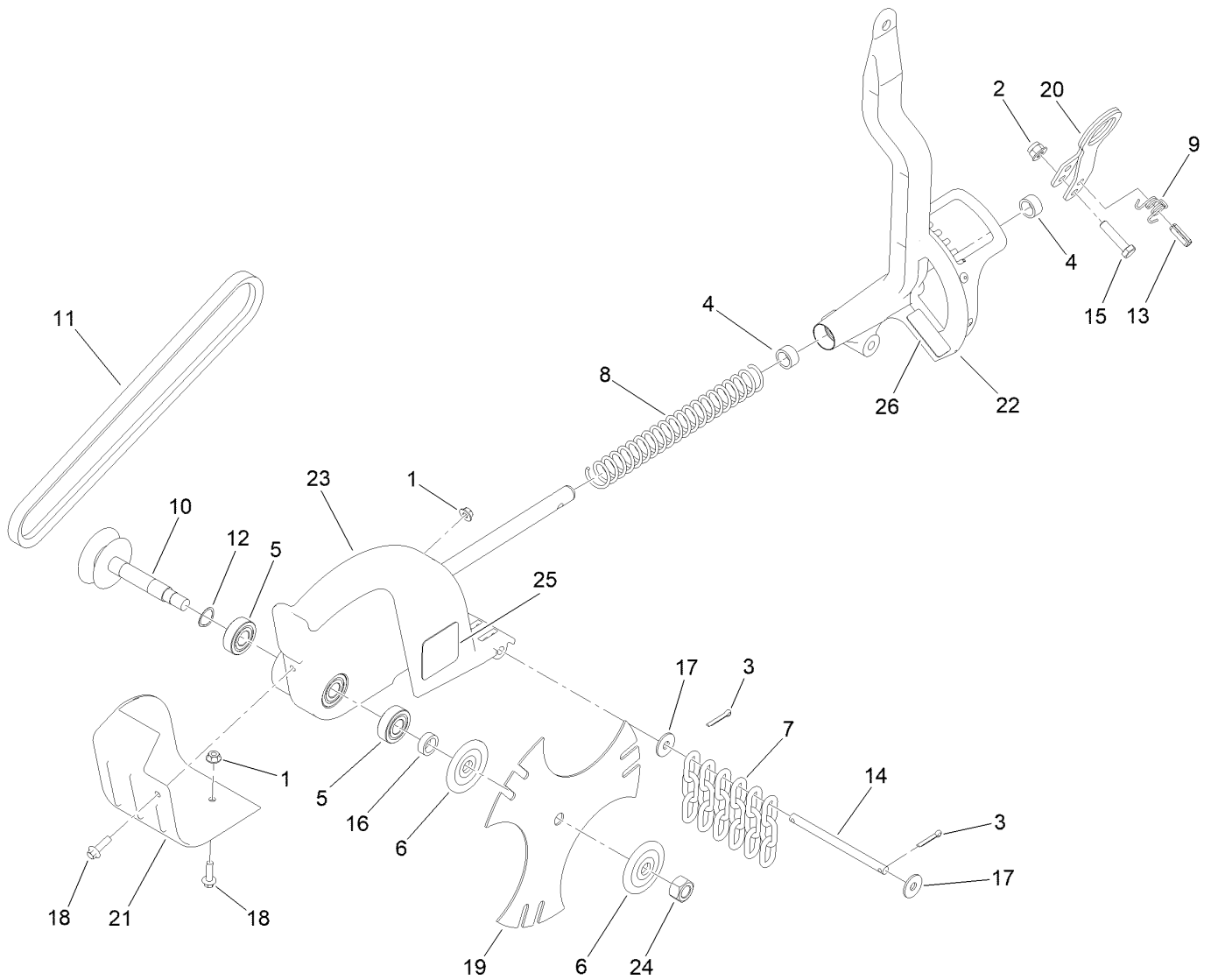
Engine Mount and Wheel Bearing Assembly



Engine Mount and Wheel Bearing Assembly (continued)

<i>Ref.</i>	<i>Part Number</i>	<i>Qty.</i>	<i>Description</i>	<i>Ref.</i>	<i>Part Number</i>	<i>Qty.</i>	<i>Description</i>
1	144-5772	2	Bearing-Wheel	5	147-4255	1	Frame-Right
2	144-4789	6	Nut-Hex	6	147-4256	1	Engine Mount-Front
3	144-4784	6	Screw-HHF	7	147-4257	1	Engine Mount-Rear
4	147-4254	1	Frame-Left				

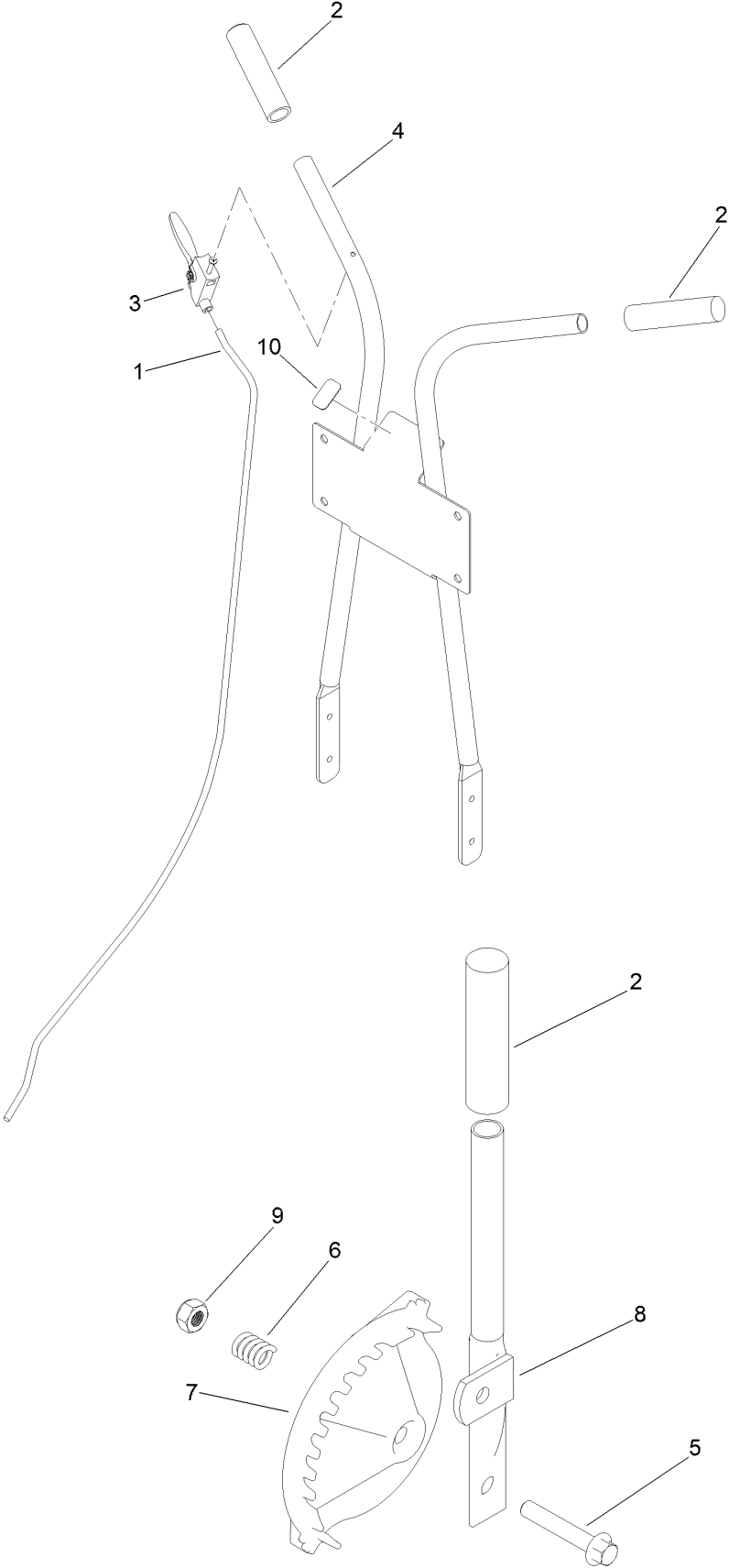
Cutting Head Assembly



Cutting Head Assembly (continued)

<i>Ref.</i>	<i>Part Number</i>	<i>Qty.</i>	<i>Description</i>	<i>Ref.</i>	<i>Part Number</i>	<i>Qty.</i>	<i>Description</i>
1	144-5022	2	Nut-Hex	14	144-5794	1	Rod-Curtain
2	144-4789	1	Nut-Hex	15	144-5798	1	Screw-HHCS
3	144-5769	2	Pin-Cotter	16	144-5799	1	Spacer-Blade
4	144-5770	2	Bushing-Angle	17	144-4936	2	Washer-Flat
5	144-5774	2	Bearing-Blade	18	147-4252	2	Screw-Hhfc
6	144-5779	2	Blade Clamp	19	147-4253	1	Blade
7	144-5780	6	Chain-Curtain	20	147-4260	1	Handle-Angle
8	144-5783	1	Spring-Belt	21	147-4261	1	Guard-Belt
9	144-5784	1	Spring-Angle	22	147-4265	1	Blade Arm
10	144-5789	1	Pulley	23	147-4266	1	Cutting Head
11	144-5790	1	Belt	24	147-4272	1	Nut-Hex
12	144-5791	1	Washer-Wave	25	147-4284	1	Decal-Guard
13	144-5792	1	Roll Pin	26	147-4275	1	Decal-Angle

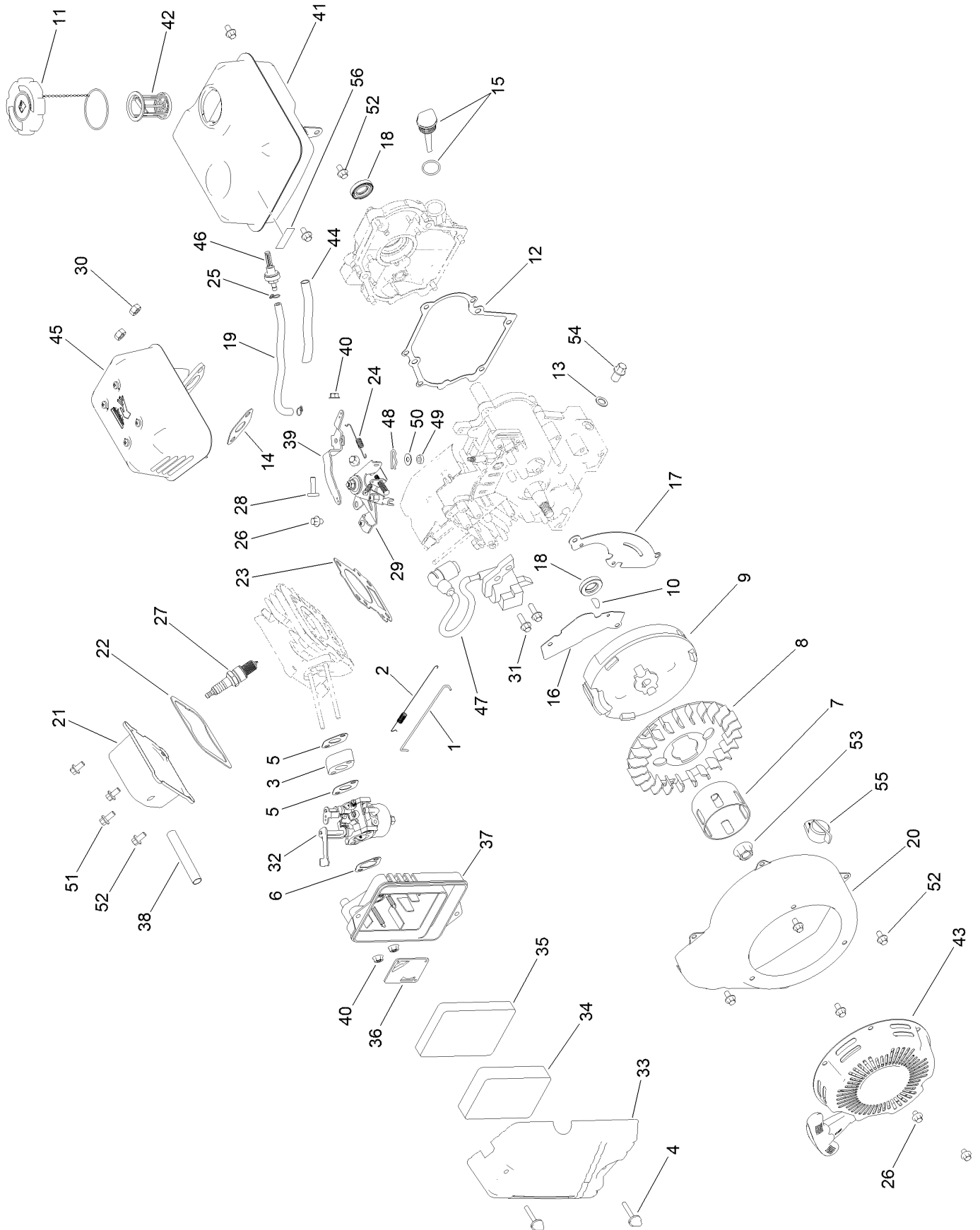
Handles and Controls Assembly



Handles and Controls Assembly (continued)

<i>Ref.</i>	<i>Part Number</i>	<i>Qty.</i>	<i>Description</i>	<i>Ref.</i>	<i>Part Number</i>	<i>Qty.</i>	<i>Description</i>
1	144-5775	1	Cable-Throttle	6	144-5782	1	Spring-Height
2	144-5778	3	Grip	7	147-4258	1	Selector-Height
3	144-5796	1	Trigger	8	147-4259	1	Handle-Height
4	147-4268	1	Handle Bar	9	144-4964	1	Nut-Hex
5	144-4808	1	Screw-HHF	10	147-4282	1	Decal-Throttle

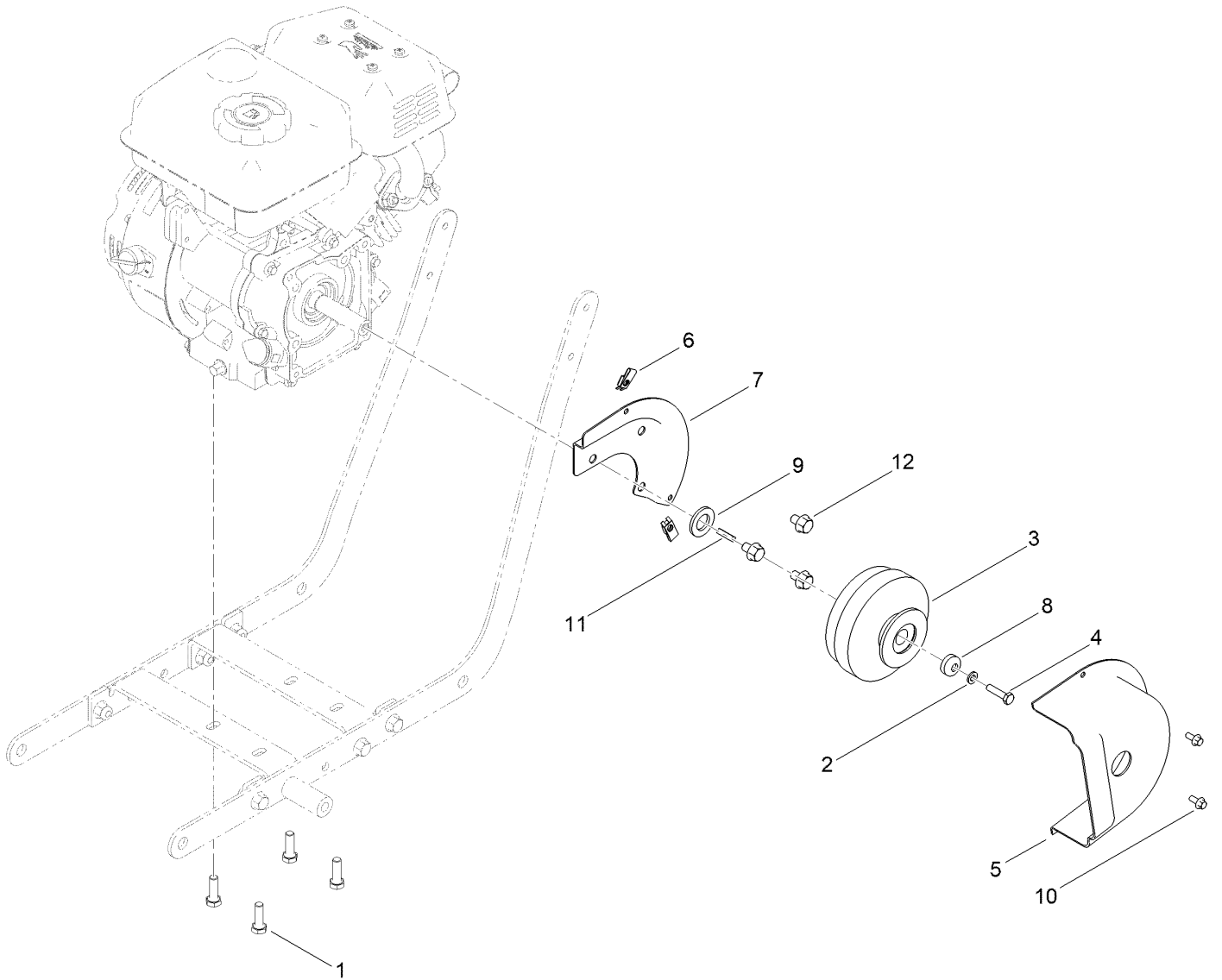
Engine Assembly No. 147-4290



Engine Assembly No. 147-4290 (continued)

<i>Ref.</i>	<i>Part Number</i>	<i>Qty.</i>	<i>Description</i>	<i>Ref.</i>	<i>Part Number</i>	<i>Qty.</i>	<i>Description</i>
1	144-5232	1	Rod-Governor	29	144-5753	1	Control-Throttle
2	144-5233	1	Spring-Governor	30	144-4939	2	Nut-Hex
3	144-5234	1	Insulator-Block	31	144-5127	2	Screw-RHF
4	144-5104	2	Screw-TMBS	32	144-5754	1	Carburetor
5	144-5235	2	Gasket-Carburetor	33	144-5130	1	Cover-Air Cleaner
6	144-5236	1	Gasket-Air Cleaner	34	144-5131	1	Cap-Air Filter
7	144-5237	1	Starter Cup	35	144-5132	1	Base-Air Filter
8	144-5238	1	Blower	36	144-5133	1	Plate-Air Filter
9	144-5105	1	Flywheel	37	144-5134	1	Box-Air Filter
10	144-5106	1	Key-Woodruff	38	144-5135	1	Tube-Breather
11	144-5239	1	Cap-Fuel	39	144-5136	1	Arm-Governor
12	144-5240	1	Gasket-Crankcase	40	144-5137	3	Nut-Hex
13	144-5241	1	Washer-Flat	41	144-5755	1	Tank-Fuel
14	144-5107	1	Gasket-Exhaust	42	144-5756	1	Strainer-Fuel
15	144-5108	1	Dipstick	43	144-5140	1	Recoil
16	144-5242	1	Deflector-Left	44	144-5757	1	Sleeve-Fuel Line
17	144-5243	1	Deflector-Right	45	144-5758	1	Muffler
18	144-5112	2	Seal-Oil	46	144-5759	1	Filter-Fuel
19	144-5244	1	Fuel Line	47	144-5760	1	Coil
20	144-5245	1	Blower Housing	48	144-5761	1	Pin-Governor
21	144-5246	1	Cover-Valve	49	144-5762	1	Seal-Governor
22	144-5247	1	Gasket-Valve Cover	50	144-5763	1	Washer-Flat
23	144-5248	1	Gasket-Head	51	144-5764	1	Screw-HHF
24	144-5249	1	Spring-Throttle	52	144-5765	10	Screw-RHF
25	144-5750	2	Clamp-Hose	53	144-5141	1	Nut-Hex
26	144-5118	5	Screw-RHF	54	144-5766	1	Screw-RHF
27	144-5751	1	Spark Plug	55	144-5767	1	Switch-Rotary
28	144-5752	1	Screw-T	56	147-4281	1	Decal-Start

Clutch Assembly



Clutch Assembly (continued)

<i>Ref.</i>	<i>Part Number</i>	<i>Qty.</i>	<i>Description</i>	<i>Ref.</i>	<i>Part Number</i>	<i>Qty.</i>	<i>Description</i>
1	144-4880	4	Screw-HHCS	7	144-5788	1	Bracket- Clutch Shield
2	144-5768	1	Washer-Flat	8	144-5795	1	Spacer-Clutch
3	144-5785	1	Clutch	9	147-4251	1	Washer-Flat
4	144-4919	1	Screw-HHCS	10	144-4955	2	Screw-HHF
5	144-5786	1	Shield-Clutch	11	147-4269	1	Key
6	144-4922	2	Cage Nut	12	147-4270	3	Screw-HHF



Count on it.