



**Trimmer Rack**  
**GrandStand® Revolution® Mower**  
 Model No. 145-3530

**Installation Instructions**

# Installation

## Loose Parts

Use the chart below to verify that all parts have been shipped.

Procedure	Description	Qty.	Use
<b>1</b>	No parts required	–	Prepare the machine for installation.
<b>2</b>	Upper mount bracket Screw (5/16 inch) Slot bracket Carriage bolt (1/4 x 3/4 inch) Nut (1/4 inch) Large fist clamp Large backer plate Hex-head flange screw (1/4 x 1-1/2 inches)	1 3 1 2 4 1 1 2	Install the upper bracket assembly.
<b>3</b>	Lower mount bracket Screw (5/16 inch) Adjustment plate Carriage bolt (1/4 x 3/4 inch) Nut (1/4 inch) Small fist clamp Small backer plate Hex-head flange screw (1/4 x 1-1/2 inches)	1 2 1 2 4 1 1 2	Install the lower mount bracket.
<b>4</b>	No parts required	–	Complete the installation.



# 1

## Preparing the Machine

No Parts Required

### Procedure

1. Park the machine on a level surface.
2. Disengage the drives and the power take-off.
3. Shut off the machine and remove the key.
4. Wait for all moving parts to stop.
5. Turn the battery-disconnect switch to the OFF position.
6. Lower the platform.
7. Loosen the twist knobs on each side of the machine.

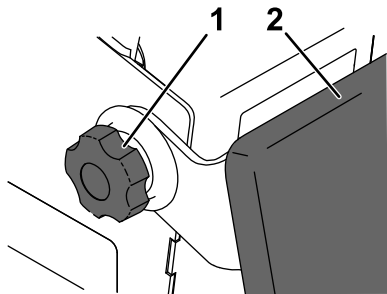


Figure 1

g375719

1. Twist knob
2. Cushion

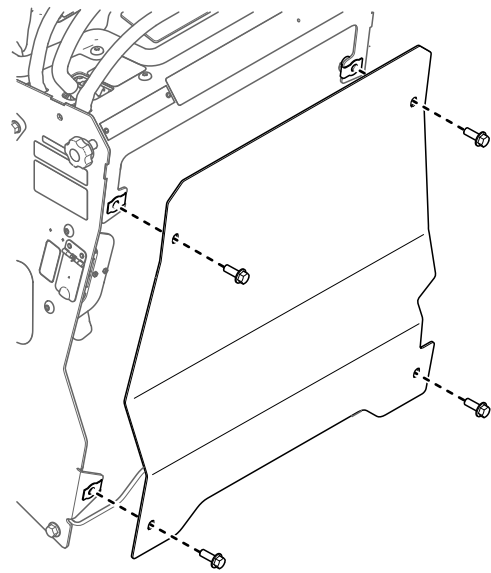


Figure 2

g377627

8. Lower the cushion to the platform.
9. Remove the rear access cover.

# 2

## Installing the Upper Bracket Assembly

### Parts needed for this procedure:

1	Upper mount bracket
3	Screw (5/16 inch)
1	Slot bracket
2	Carriage bolt (1/4 x 3/4 inch)
4	Nut (1/4 inch)
1	Large fist clamp
1	Large backer plate
2	Hex-head flange screw (1/4 x 1-1/2 inches)

### Procedure

1. On the left side of the machine, measure and mark the 3 holes as shown below.

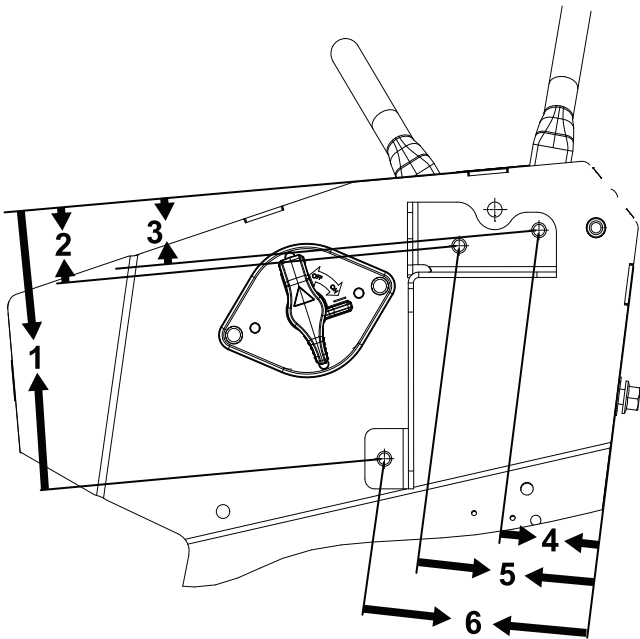


Figure 3

- |                          |                          |
|--------------------------|--------------------------|
| 1. 17.6 cm (6.93 inches) | 4. 6.4 cm (2.52 inches)  |
| 2. 4.6 cm (1.82 inches)  | 5. 11.4 cm (4.5 inches)  |
| 3. 4.1 cm (1.61 inches)  | 6. 14.5 cm (5.71 inches) |

### ⚠ WARNING

Using a drill without proper eye protection may allow debris to enter the eye, causing injury.

When drilling, always wear eye protection.

2. Use a drill bit (9/32 inch) to drill through the 3 marked hole locations.

**Note:** When drilling, avoid pushing the drill bit too far beyond the plate.

3. Use compressed air to remove the metal shavings from drilling.
4. Use 3 screws (5/16 inch) to secure the upper mount bracket to the machine.

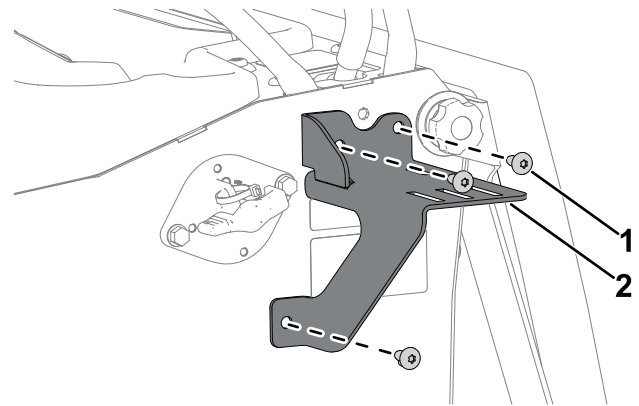


Figure 4

- |                      |                        |
|----------------------|------------------------|
| 1. Screw (5/16 inch) | 2. Upper mount bracket |
|----------------------|------------------------|

5. Use 2 carriage bolts (1/4 x 3/4 inch) and 2 nuts (1/4 inch) to secure the slot bracket to the upper mount bracket.

# 3

## Installing the Lower Mount Bracket

### Parts needed for this procedure:

1	Lower mount bracket
2	Screw (5/16 inch)
1	Adjustment plate
2	Carriage bolt (1/4 x 3/4 inch)
4	Nut (1/4 inch)
1	Small fist clamp
1	Small backer plate
2	Hex-head flange screw (1/4 x 1-1/2 inches)

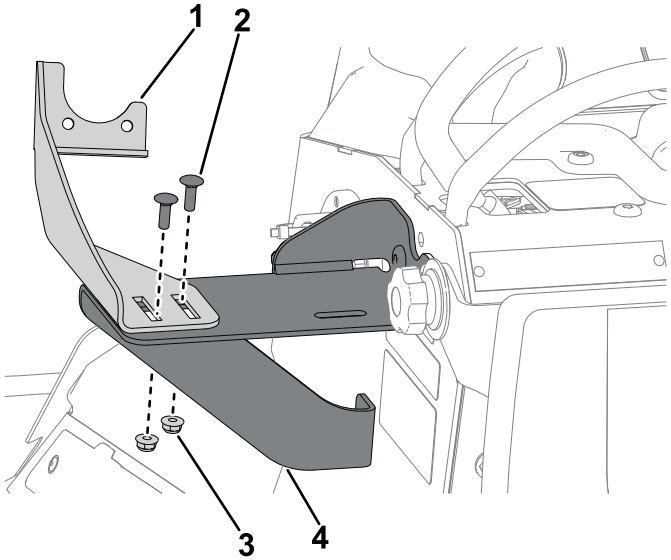


Figure 5

g441543

- 1. Slot bracket
- 2. Carriage bolt (1/4 x 3/4 inch)
- 3. Nut (1/4 inch)
- 4. Upper mount bracket

- 6. Use 2 hex-head flange screws (1/4 x 1-1/2 inches) and 2 nuts (1/4 inch) to secure the large fist clamp and large backer plate to the slot bracket.

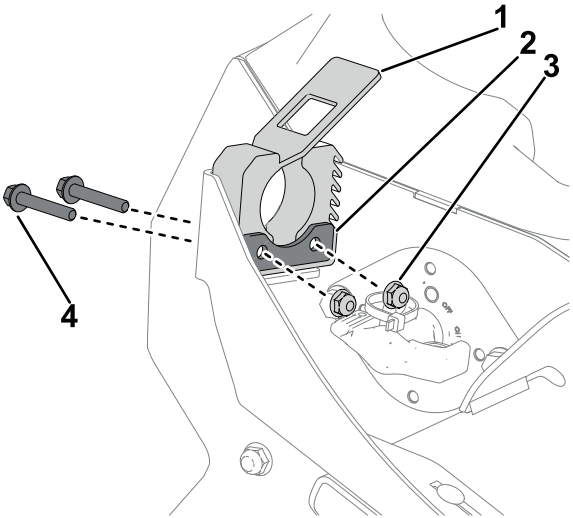


Figure 6

g441545

- 1. Large fist clamp
- 2. Large backer plate
- 3. Nut (1/4 inch)
- 4. Hex-head flange screw (1/4 x 1-1/2 inches)

### Procedure

- 1. Using the lower mount bracket as a template, mark the 2 holes as shown below.

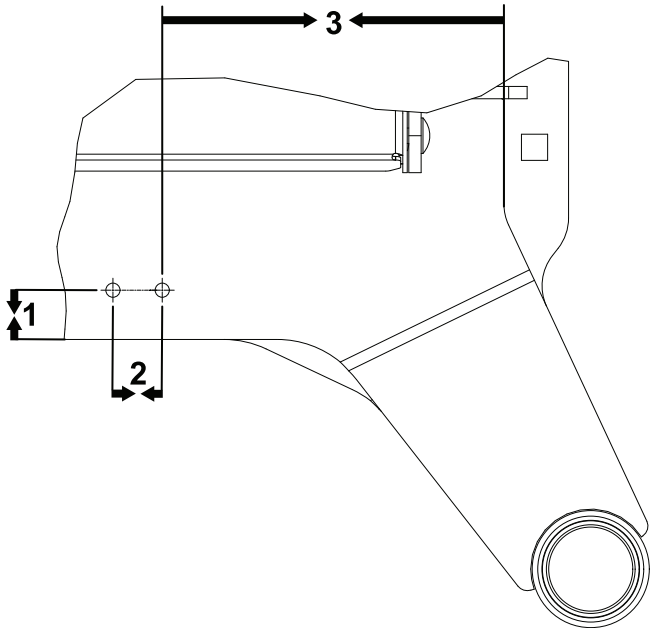


Figure 7

g443617

- 1. 2.54 cm (1 inch)
- 2. 2.54 cm (1 inch)
- 3. 17.6 cm (6.93 inches)

**⚠ WARNING**

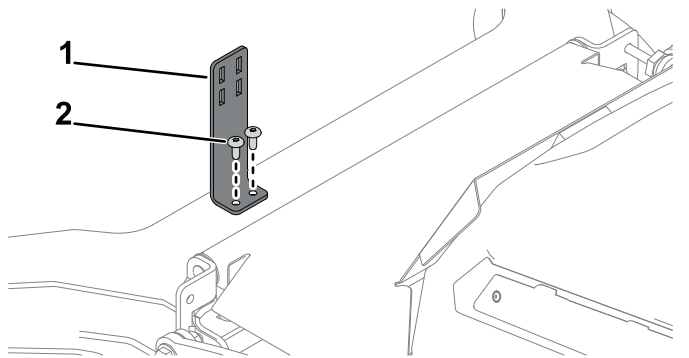
Using a drill without proper eye protection may allow debris to enter the eye, causing injury.

When drilling, always wear eye protection.

2. Use a 9/32 inch drill bit to drill through the 2 marked hole locations.

**Note:** Do not push the drill bit too far past the plate when drilling.

3. Use 2 screws (5/16 inch) to secure the lower mount bracket to the machine.

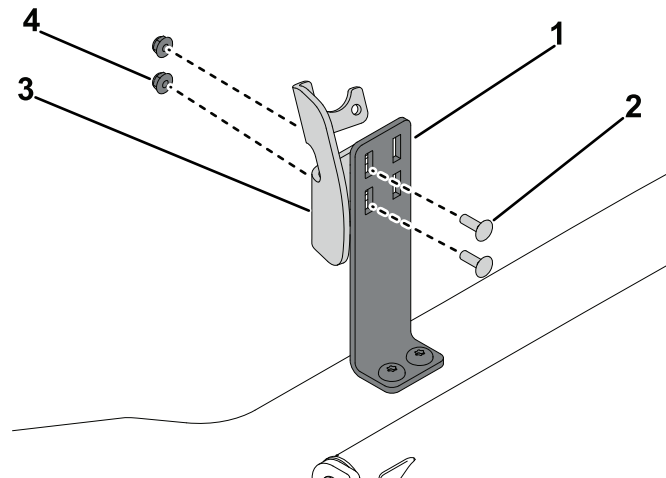


**Figure 8**

g441547

1. Lower mount bracket
2. Screw (5/16 inch)

4. Use compressed air to remove the metal shavings from drilling.
5. Use 2 carriage bolts (1/4 x 3/4 inch) and 2 nuts (1/4 inch) to secure the adjustment plate to the lower mount bracket.

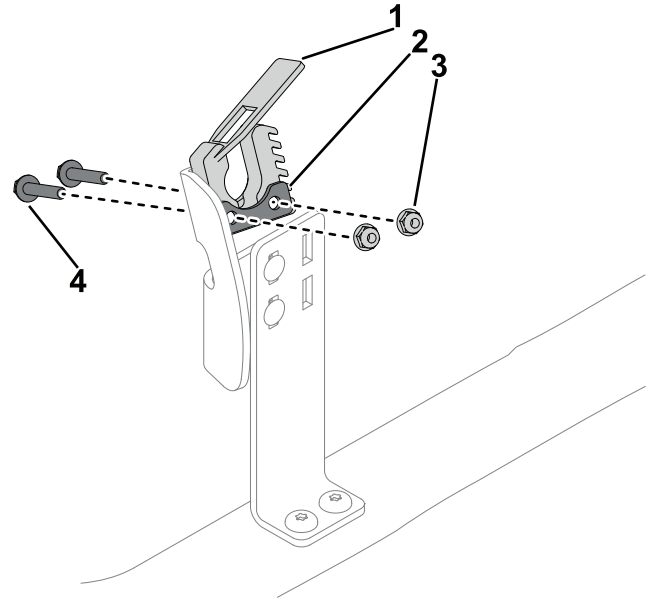


**Figure 9**

g441563

1. Lower mount bracket
2. Carriage bolt (1/4 x 3/4 inch)
3. Adjustment plate
4. Nut (1/4 inch)

6. Use 2 hex-head flange screws (1/4 x 1-1/2 inches) and 2 nuts (1/4 inch) to secure the small backer plate and small fist clamp to the adjustment plate.



**Figure 10**

g441614

1. Small fist clamp
2. Small backer plate
3. Nut (1/4 inch)
4. Hex-head flange screw (1/4 x 1-1/2 inches)

# 4

## Completing the Installation

No Parts Required

### Procedure

1. Install the rear access cover.

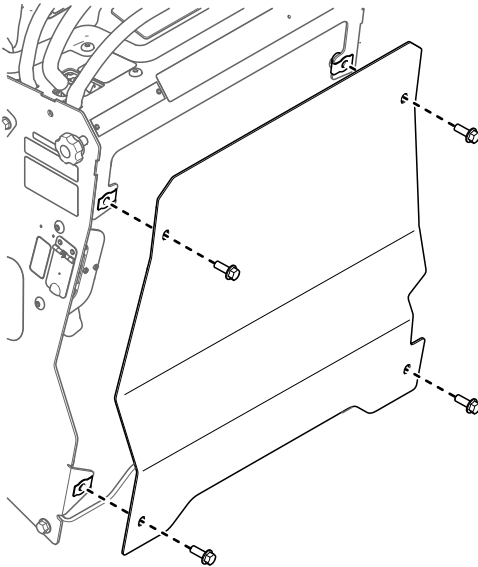


Figure 11

g377627

**Note:** Position the upper trimmer handle so that is held in place by the upper clamp.

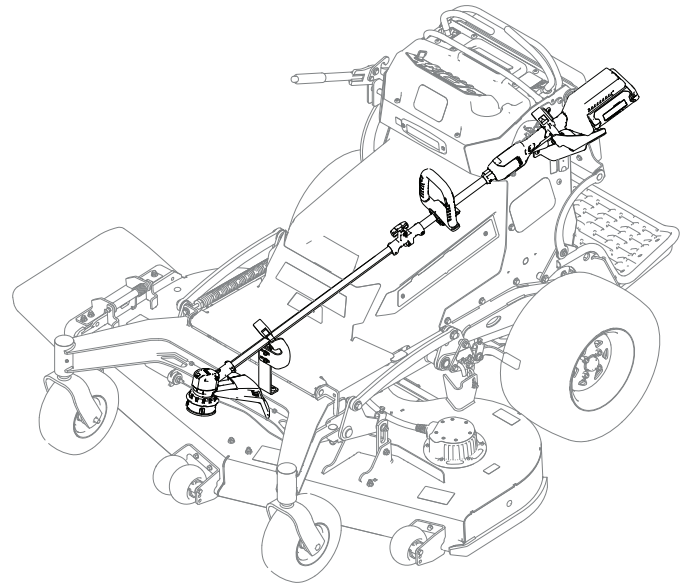


Figure 13

g442743

2. Raise the cushion to the platform.
3. Tighten the twist knobs on each side of the machine.

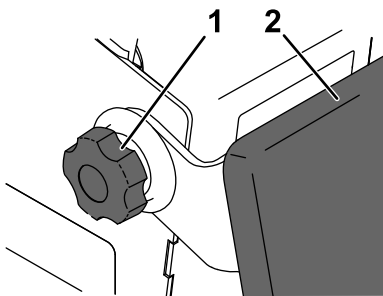


Figure 12

g375719

1. Twist knob
2. Cushion

4. Adjust the upper and lower plates to fit your trimmer as needed.
5. Turn the battery-disconnect switch to the ON position.

Figure 13 illustrates the correct position of the trimmer on the rack.

**Notes:**



**Count on it.**