



**Count on it.**

**Parts Catalog**

**Spring Rake**

**Sand Pro®/Infield Pro® 3040 and 5040  
Traction Unit**

Model No. 08752—Serial No. 414500000 and Up



# Ordering Replacement Parts

To order replacement parts, please supply the part number, the quantity, and the description of each part desired.

## Understanding Reference Numbers

Each identified part in an illustration has a reference number. The reference number for a part also appears in the parts list, along with other information about the part.

This catalog uses two special reference number formats, one to indicate parts in a service assembly and another to indicate the quantity of a given part in an illustration.

## Service Assembly Reference Numbers

Parts in service assemblies have reference numbers in the form a:b. The a represents the reference number of the entire service assembly and the b represents a sequential number unique to each part within the service assembly.

For example, a wheel assembly might be identified by reference number 6, the tire by 6:1, the valve by 6:2, and the wheel by 6:3. When you order the assembly identified by reference number 6, you receive all parts identified by reference numbers 6:1, 6:2, and 6:3. However, you may also order any part individually. Reference numbers of this type appear in illustration and in parts lists.

## Reference Numbers Indicating Quantity

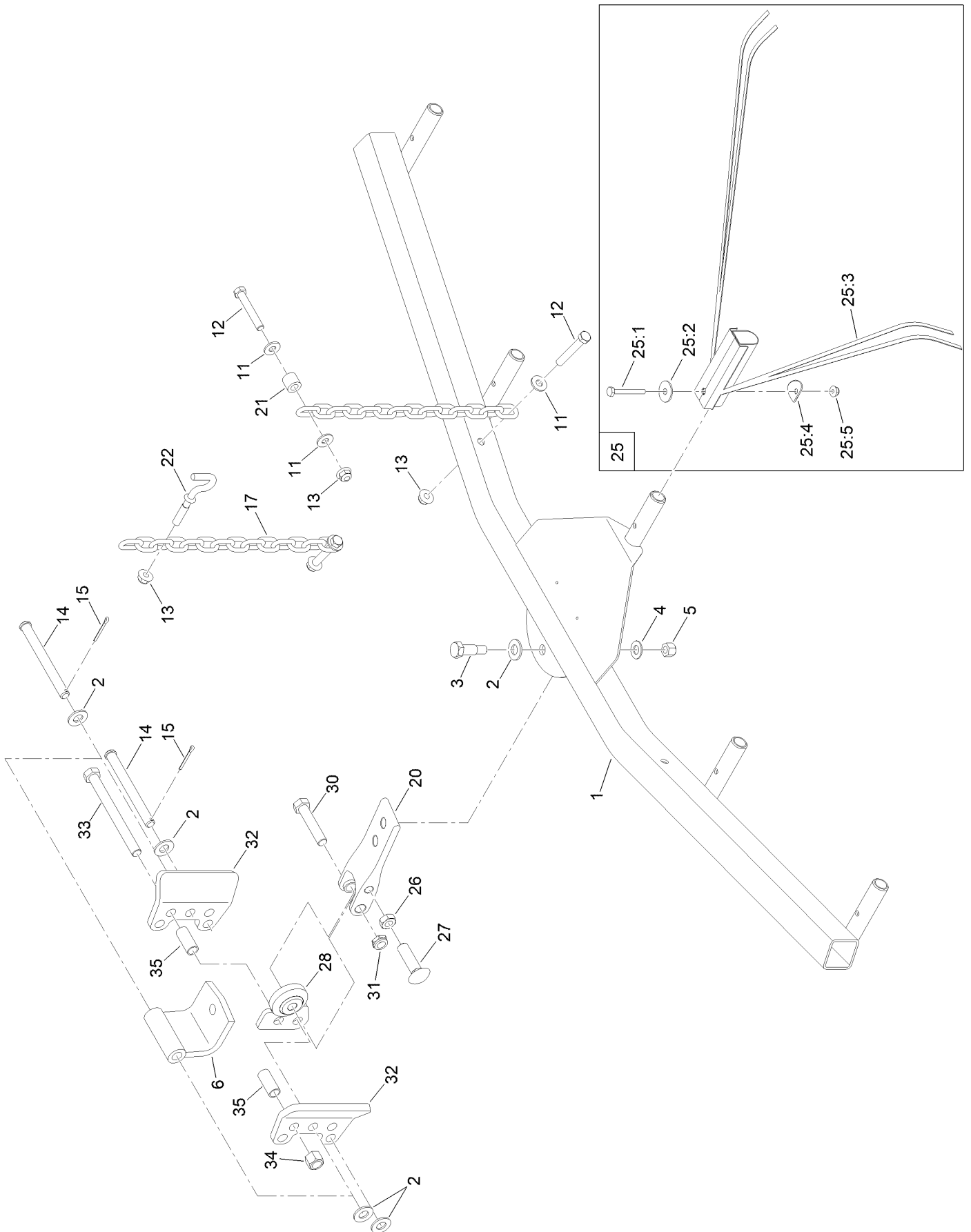
In an illustration, if a reference number indicates more than one part, the reference number has the form nX y. The n represents the quantity of the part, the X is the multiplication symbol, and the y represents the reference number.

For example, in an illustration, the reference number 2X 37 means that two of the parts identified by reference number 37 are indicated.

# Contents

Spring Rake Assembly ..... 4  
Attachments and Accessories ..... 6

# Spring Rake Assembly



## Spring Rake Assembly (continued)

<i>Ref.</i>	<i>Part Number</i>	<i>Qty.</i>	<i>Description</i>	<i>Ref.</i>	<i>Part Number</i>	<i>Qty.</i>	<i>Description</i>
1	108-3198-03	1	Hanger ASM	25	117-4689	5	Spring Rake Kit
2	3256-26	5	Washer-Flat	25:1	321-11	1	Screw-HH
3	80-2050	1	Bolt-Shoulder	25:2	3256-82	1	Washer-Flat
4	3256-25	1	Washer-Flat	25:3	120-3468	1	Rake-Spring
5	3296-48	1	Nut-Hex	25:4	117-4687	1	Washer-Cup
6	108-9429-03	1	Pivot ASM	25:5	104-7201	1	Nut-HF, NI
11	3256-3	6	Washer-Flat	26	3218-5	2	Nut-Jam
12	323-47	4	Screw-HH	27	3233-14	2	Screw-CARR
13	104-8301	4	Nut-HF, NI	28	138-2228	1	Hitch-Ball
14	100-5024	2	Pin-Clevis	30	325-10	1	Screw-HH
15	3272-12	2	Pin-Cotter	31	3296-45	1	Nut-Hex
17	84-2452	2	Chain-14 Link, Straight	32	120-3499-03	2	Bracket-Stop
19	108-9427	1	Lift Arm Adapter ASM ●■	33	325-22	1	Screw-HH
20	147-3560	1	Drawbar-Rake	34	119-8969	1	Nut-Hex
21	121-1760	2	Spacer	35	138-2227	2	Spacer
22	80-2040	2	Hook				

● Not illustrated

■ Optional Equipment

# Attachments and Accessories

For 08752 Spring Rake Sand Pro/Infield Pro 3040 and 5040 Traction Unit

**Product Name**

**Model/Part**

Lift Arm Adapter ASM ..... 108-9427

**Notes:**



**Count on it.**