



# Heat Deflector Kit

Z Master® Professional 7500-D Series Riding Mower

Model No. 147-7913

## Installation Instructions

# Installation

## Loose Parts

Use the chart below to verify that all parts have been shipped.

Description	Qty.	Use
No parts required	–	Prepare the machine.
No parts required	–	Remove the seat assembly.
Heat shield	1	Install the kit.
Thread-forming screw (5/16 x 3/4 inch)	4	
Flat washer (5/16 inch)	4	

**Note:** Determine the left and right sides of the machine from the normal operating position.

## Preparing the Machine

1. Park the machine on a level surface.
2. Disengage the blade-control switch.
3. Move the motion-control levers outward to the NEUTRAL-LOCK position.
4. Engage the parking brake.
5. Shut off the engine and remove the key.
6. Allow the machine to cool before adjusting, servicing, cleaning, or storing it.
7. Disconnect the negative battery cable; refer to the *Operator's Manual*.



# Removing the Seat Assembly

1. Slide the seat fully forward, then rotate the seat upward.
2. Disconnect the seat wire harness from the main machine wire harness.
3. Remove the cable tie securing the seat wire harness to the seat-mount frame.
4. Lower the seat.
5. Remove the 4 seat-isolator nuts and remove the seat from the frame (Figure 1).

Retain the fasteners.

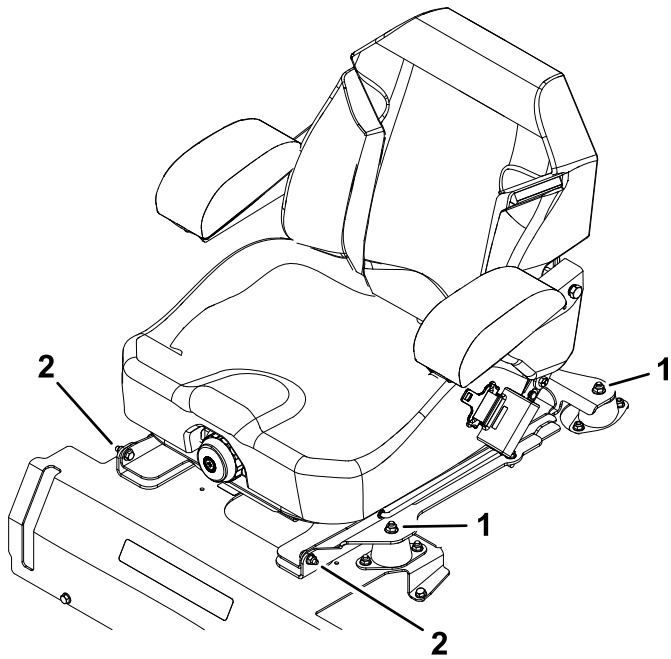


Figure 1

g436061

1. Seat-isolator nuts
2. Seat assembly fasteners

# Installing the Kit

1. With seat-support plate facing upward, measure and mark the location of the hole shown in Figure 2.
2. Drill one 7 mm or 9/32 inch diameter hole at the marked location.

## ⚠ WARNING

Using a drill without wearing eye protection may allow debris to enter the eye, causing personal injury.

When drilling, always wear eye protection.

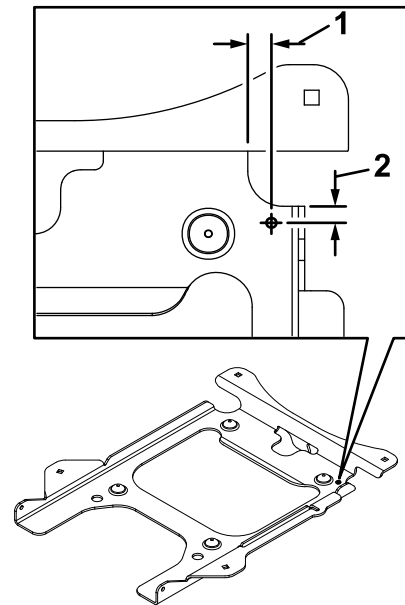


Figure 2

g424088

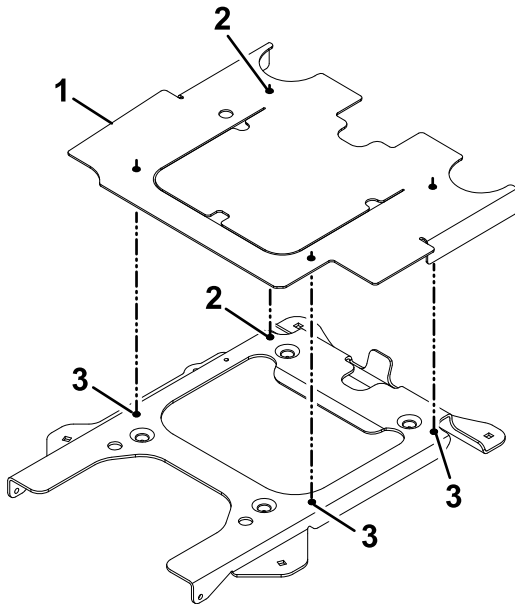
1. 24 mm (15/16 inch)
2. 9 mm (3/8 inch)

6. Remove the fasteners securing the seat assembly to the seat-support plate and disconnect the prop rod.

Retain the fasteners.

7. Remove the seat assembly from the seat-support plate.

3. Turn the seat-support plate over, so that the bottom side is facing upward.
4. Ensure that the heat shield is oriented correctly ([Figure 3](#)), then place the heat shield on top of the seat-support plate and align it with the drilled hole.
5. Mark the three remaining hole locations on the heat shield onto the seat-support plate.
6. Remove the heat shield.
7. Drill the three holes (7 mm or 9/32 inch) into the seat-support plate.

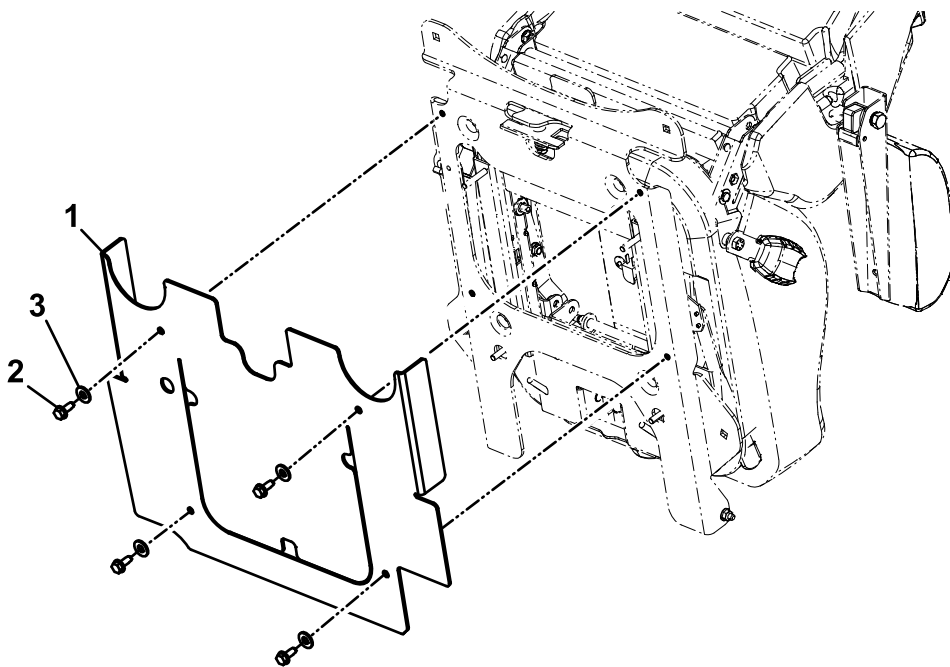


g421739

**Figure 3**

1. Heat shield
  2. Align the heat shield with these holes.
  3. Mark and drill the holes here.
-

8. Secure the heat shield to the seat-support plate using the 4 thread-forming screws (5/16 x 3/4 inch) and 4 flat washers (5/16 inch) as shown in [Figure 4](#).
9. Install the previously removed seat assembly to the seat-support plate, then secure the assembly to the machine.
10. Connect the seat wire harness to the main machine wire harness, and secure the harness using cable ties away from any moving parts.
11. Connect the negative battery cable.



**Figure 4**

g420322

1. Heat shield
2. Thread-forming screw (5/16 x 3/4 inch)
3. Flat washer (5/16 inch)