



3WD Kit

Greensmaster® 3360 or 3370 eTriFlex Traction Unit

Model No. 04503

Installation Instructions

Installation

1

Preparing the Machine

No Parts Required

Procedure

1. Park the machine on a level surface.
2. Engage the parking brake.
3. Lower the cutting units.
4. Shut off the machine and remove the key.
5. Disconnect the main-power connectors; refer to your machine *Operator's Manual*.

2

Raising the Machine

No Parts Required

Procedure

Raise the machine; refer to the pre-maintenance section of your machine *Operator's Manual*.

3

Remove the Rear Wheel

No Parts Required

Procedure

1. Remove the 4 lugnuts that secure the wheel to the wheel-hub assembly ([Figure 1](#)).

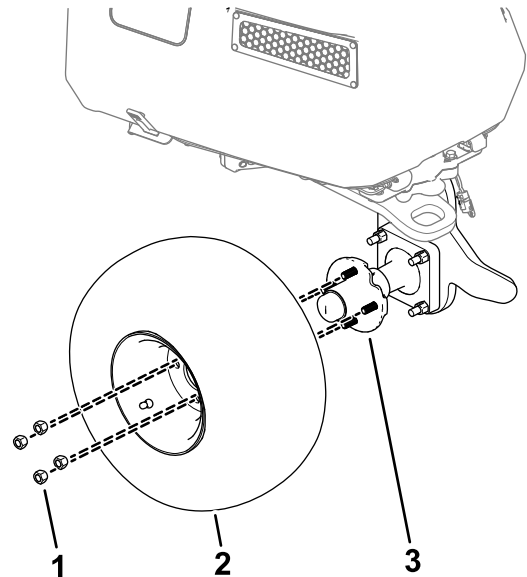


Figure 1

- | | |
|-----------|-----------------------|
| 1. Lugnut | 3. Wheel-hub assembly |
| 2. Tire | |

2. Remove the wheel from the machine ([Figure 1](#)).



4

Removing the Existing Wheel-Hub Assembly

No Parts Required

Procedure

Remove the existing wheel-hub assembly by removing the bolts and nuts that secure the assembly to the castor fork (Figure 2).

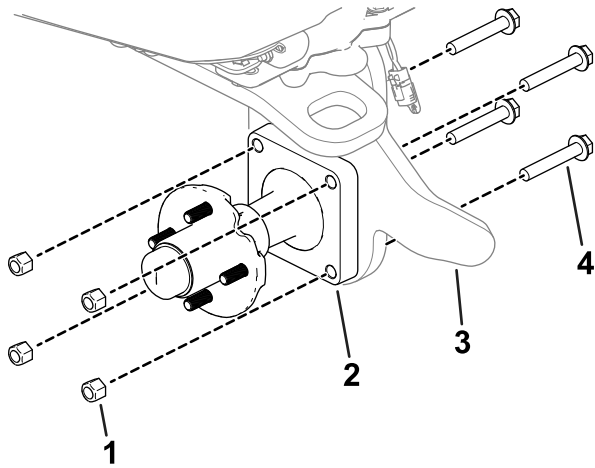


Figure 2

g293905

- 1. Nut
- 2. Wheel-hub assembly
- 3. Castor fork
- 4. Bolt

5

Installing the Gearbox

Parts needed for this procedure:

1	Gearbox assembly
1	Dust cap
1	Snap ring
4	Bolt (M12)
1	Fitting
1	Vent hose

Procedure

1. Remove the snap ring (shown in Figure 3) from the axle.
2. Remove the hub assembly (shown in Figure 3) from the gearbox.
3. Slide the gearbox into the castor fork.

Note: Observe the correct orientation of the gearbox as shown in Figure 3. The axle shaft should point toward the left side of the machine.

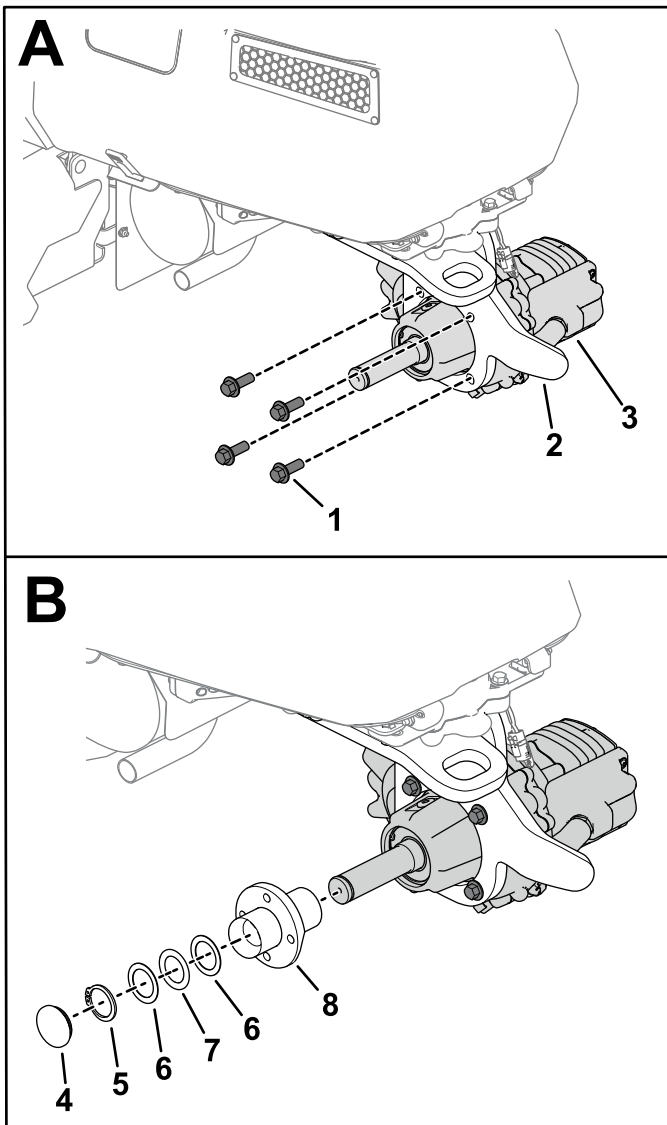


Figure 3

g311730

- | | |
|-------------------------|------------------|
| 1. Bolt (M12) | 5. Snap ring |
| 2. Castor fork | 6. Thrust washer |
| 3. Gearbox | 7. Bearing |
| 4. Dust cap with O-ring | 8. Hub assembly |

4. Use 4 bolts (M12) to secure the gearbox to the castor fork (A in [Figure 3](#)).
5. Torque the bolts (M12) to 81 to 95 N·m (60 to 70 ft-lb).
6. Install the hub assembly, snap ring, and dust cap with O-ring on the axle shaft (B in [Figure 3](#)).

When you install the snap ring, compress the wave washer in the hub assembly.

Note: If the thrust washers and bearing are removed from the hub assembly, assemble them as shown in [Figure 3](#).

7. Remove the plug from the top of the gearbox (A of [Figure 4](#)).

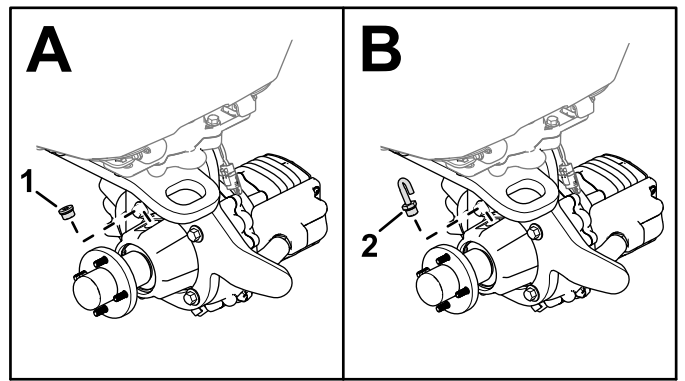


Figure 4

g301398

1. Plug
2. Vent hose and fitting

8. Secure the vent hose and fitting to the gearbox (B of [Figure 4](#)).

6

Installing the Harness Bracket

Parts needed for this procedure:

1	Harness bracket
2	Bolt (3/8 x 3 inches)
2	Flange nut (3/8 inch)
2	Flat washer
2	Spacer

Procedure

Use 2 bolts (3/8 x 3 inches), 2 flat washers, 2 spacers, and 2 flange nuts (3/8 inch) to secure the harness bracket to the caster fork ([Figure 5](#)).

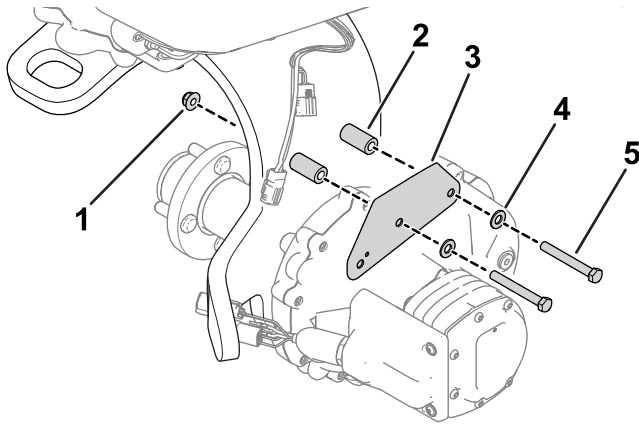


Figure 5

g358859

- 1. Flange nut
- 2. Spacer
- 3. Harness bracket

- 4. Washer
- 5. Bolt

7

Connecting the Gearbox Wire Harness

Parts needed for this procedure:

1	Push-mount fastener
---	---------------------

Procedure

1. Raise the hood.
2. Route the gearbox wire harness toward the hood as shown in [Figure 6](#).

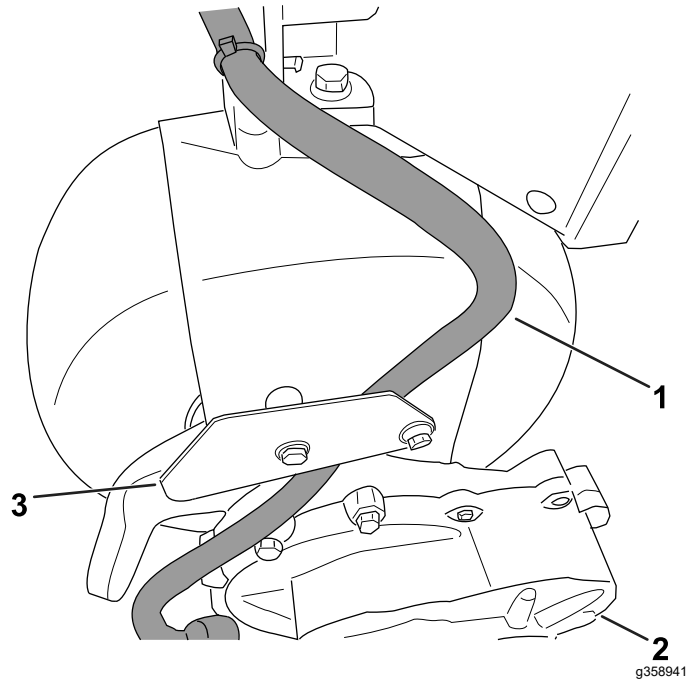


Figure 6

g358941

- 1. Gearbox wire harness
- 2. Gearbox
- 3. Harness bracket

3. Route the remaining gearbox-wire-harness connectors toward the steering motor ([Figure 7](#))

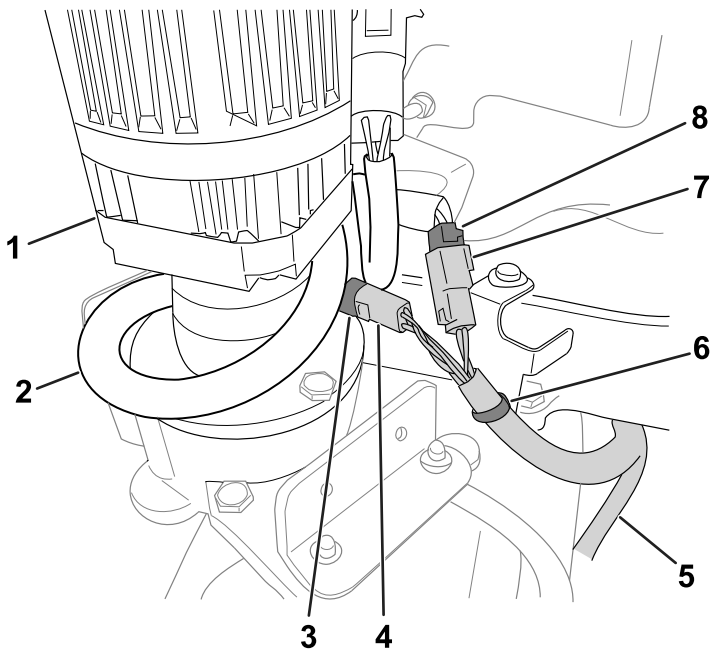


Figure 7

g344561

- | | |
|--|---|
| 1. Steering column | 5. Gearbox wire harness |
| 2. Machine wire harness | 6. Push-mount fastener |
| 3. 4-socket connector (machine wire harness) | 7. 2-socket connector (machine wire harness) |
| 4. 4-pin connector (gearbox wire harness) | 8. 2-pin connector (motor gearbox wire harness) |

4. Cut the tie wrap that secures the machine harness to the bracket, leaving the push-mount in place (Figure 7). Discard the tie wrap.
5. Connect the gearbox connectors to the machine wire-harness connectors (Figure 7):
 - 2-pin connector of the gearbox to the 2-socket connector of the machine wire harness
 - 4-pin connector of the gearbox to the 4-socket connector of the machine wire harness
6. Wrap the extra machine wire harness slack around the steering motor as shown in Figure 7.
7. Using the tie wrap supplied in the kit, secure the gearbox harness to the push-mount as shown in Figure 7.
8. Close the hood.

8

Greasing the Hub Assembly

No Parts Required

Procedure

Grease the hub assembly; refer to [Greasing the Hub Assembly](#) (page 6).

9

Installing the Rear Wheel

No Parts Required

Procedure

1. Use the previously removed lugnuts to secure the wheel to the hub (Figure 8).

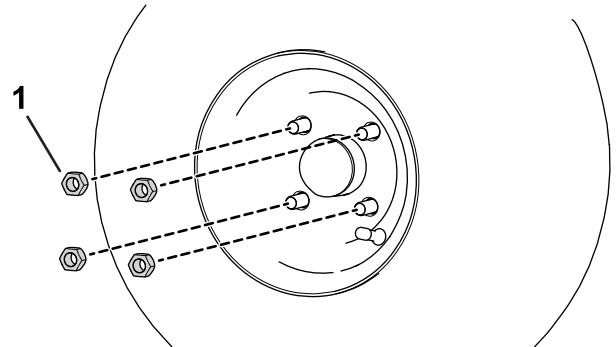


Figure 8

g300939

1. Lugnut
2. Torque the lugnuts (in a crossing pattern as shown in Figure 9) to 108 to 122 N·m (80 to 90 ft-lb).

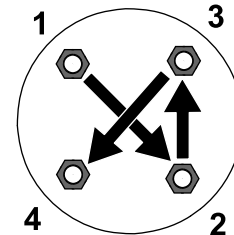


Figure 9

g274650

10

Installing the Fuse

Parts needed for this procedure:

1	Fuse
---	------

Procedure

Install the fuse to the designated 3-wheel-drive slot on the reel-drive-circuit fuse block; refer to the electrical system maintenance section in your machine *Operator's Manual*.

11

Engaging 3-Wheel-Drive Mode

No Parts Required

Procedure

The 3-wheel-drive mode should automatically enable when you install the gearbox-wire-harness connections to the machine wire harness.

To ensure that the 3-wheel-drive mode is activated, navigate to the 3WD KIT option in the SETTINGS menu of your InfoCenter. The item selected/active icon

indicates that 3-wheel-drive model is activated.

12

Completing the Installation

No Parts Required

Procedure

1. Lower the machine to the ground.
2. Connect the main-power connectors; refer to your machine *Operator's Manual*.

Maintenance

Greasing the Hub Assembly

Service Interval: Every 100 hours

Use No. 2 lithium grease to lubricate the hub assembly. Refer to [Figure 10](#) for the location of the hub-assembly grease fitting.

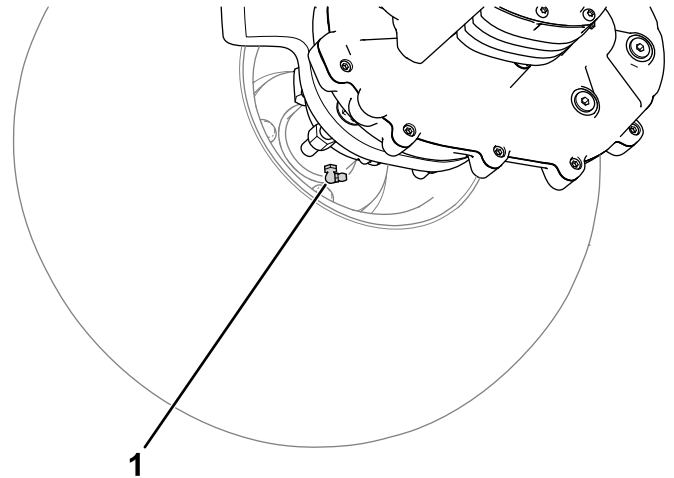


Figure 10

g300937

1. Grease fitting

Changing the Gearbox Fluid

Service Interval: After the first 8 hours

Every 800 hours

Fluid specification: SAE 80W-90

Gearbox fluid capacity: approximately 1.2 L (40 fl oz)

Preparing the Machine

1. Park the machine on a level surface.
2. Engage the parking brake.
3. Lower the cutting units.
4. Shut off the machine and remove the key.
5. Disconnect the main-power connectors; refer to your machine *Operator's Manual*.

Draining the Gearbox Fluid

1. Place a drain pan under the wheel-motor assembly ([Figure 11](#)).

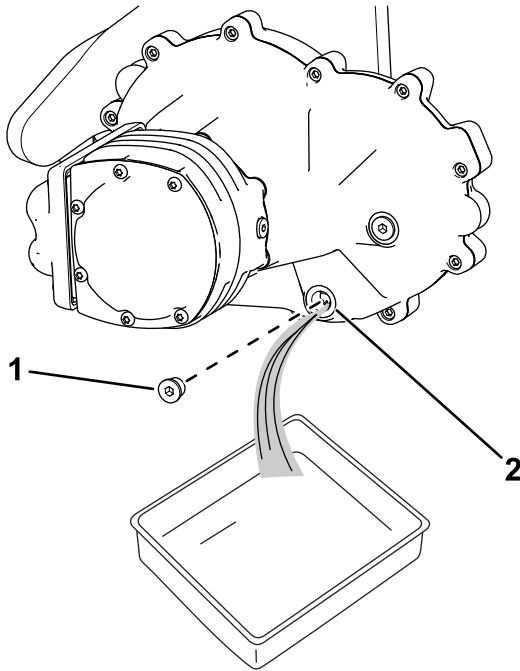


Figure 11

g300938

1. Drain plug
2. Drain port

2. Remove the plug from the drain port ([Figure 11](#))

Note: The drain port is located on the bottom of the gearbox.

Note: You can loosen the fill-port fitting [shown in [Adding Fluid to the Gearbox \(page 7\)](#)] to

ensure that it can be removed after you drain the fluid.

3. Allow the fluid to drain completely from the gearbox.
4. Clean the plug.
5. Install the drain plug into the drain port ([Figure 11](#)).

Adding Fluid to the Gearbox

1. Remove the fill-port fitting shown in [Figure 12](#).

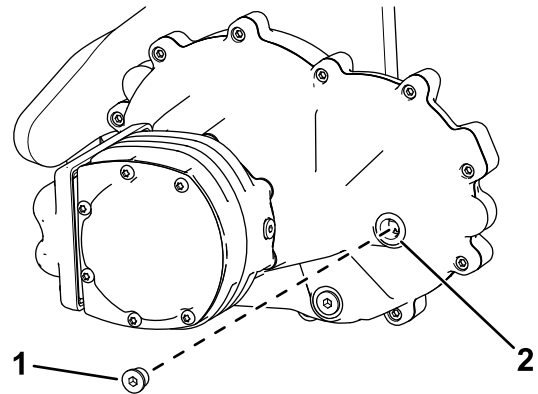


Figure 12

g321851

1. Fitting
2. Fill port

2. Add the specified fluid to the gearbox until the fluid level reaches the bottom of the fill port.
The gearbox fluid capacity is approximately 1.2 L (40 fl oz).
3. Install the fitting into the fill port ([Figure 12](#)).



Count on it.