



Hub Assembly Kit

Greensmaster® 3360 or 3370 eTriFlex Traction Unit with 3WD

Model No. 147-3131

Installation Instructions

Installation

1

Preparing the Machine

No Parts Required

Procedure

1. Park the machine on a level surface.
2. Engage the parking brake.
3. Lower the cutting units.
4. Shut off the machine and remove the key.
5. Disconnect the main-power connectors; refer to your machine *Operator's Manual*.

2

Raising the Machine

No Parts Required

Procedure

Raise the machine; refer to the pre-maintenance section of your machine *Operator's Manual*.

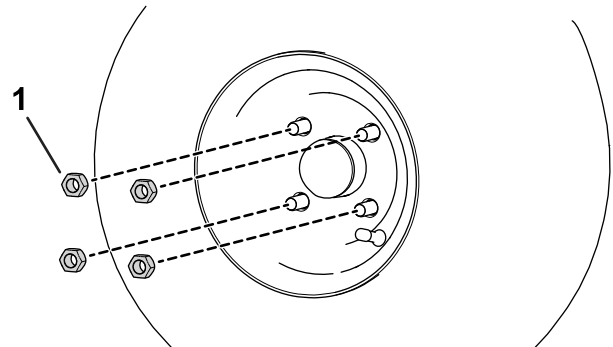
3

Remove the Rear Wheel

No Parts Required

Procedure

1. Remove the 4 lugnuts (Figure 1) that secure the wheel to the wheel-hub assembly.



g300939

Figure 1

1. Lugnut

2. Remove the wheel from the machine.



4

Removing the Existing Hub Assembly

No Parts Required

Procedure

1. Remove the dust cap from the hub assembly (Figure 2).

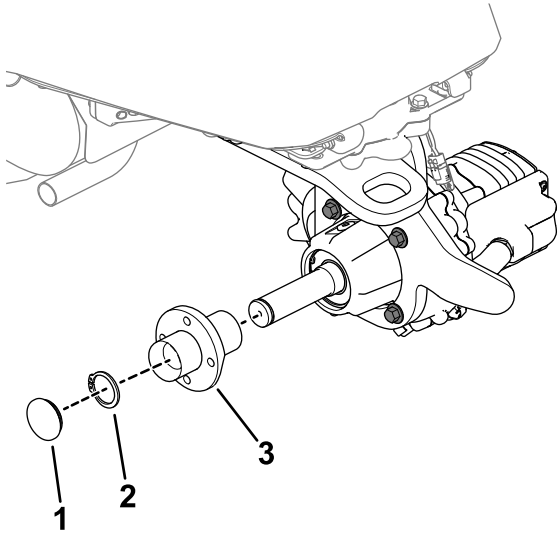


Figure 2

g432137

1. Dust cap with O-ring
2. Snap ring
3. Hub assembly

2. Remove the snap ring and twist the hub assembly off the shaft in a counterclockwise (forward) direction.

5

Installing the Hub Assembly

Parts needed for this procedure:

1	Hub assembly
1	Dust cap
1	O-ring
1	Snap ring
2	Thrust washer
1	Bearing

Procedure

Install the hub assembly, thrust washers, bearing, snap ring, and dust cap with O-ring on the axle shaft (Figure 3).

When you install the snap ring, compress the wave washer in the hub assembly.

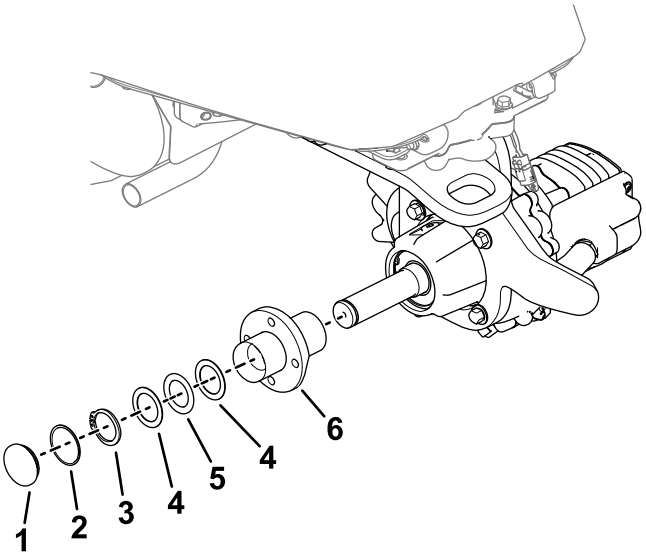


Figure 3

g432964

1. Dust cap
2. O-ring
3. Snap ring
4. Thrust washers
5. Bearing
6. Hub assembly

6

Greasing the Hub Assembly

No Parts Required

Procedure

Grease the hub assembly; refer to [Greasing the Hub Assembly \(page 3\)](#).

7

Installing the Rear Wheel

No Parts Required

Procedure

1. Use the previously removed lugnuts to secure the wheel to the hub ([Figure 4](#)).

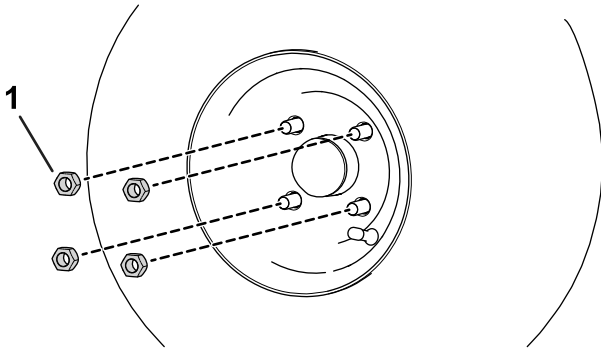


Figure 4

g300939

1. Lugnut

2. Torque the lugnuts (in a crossing pattern as shown in [Figure 5](#)) to 108 to 122 N·m (80 to 90 ft-lb).

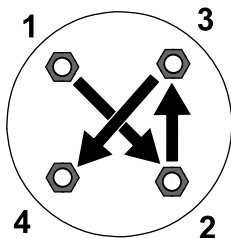


Figure 5

g274650

8

Completing the Installation

No Parts Required

Procedure

1. Lower the machine to the ground.
2. Connect the main-power connectors; refer to your machine *Operator's Manual*.

Maintenance

Greasing the Hub Assembly

Service Interval: Every 100 hours

Use No. 2 lithium grease to lubricate the hub assembly. Refer to [Figure 6](#) for the location of the hub-assembly grease fitting.

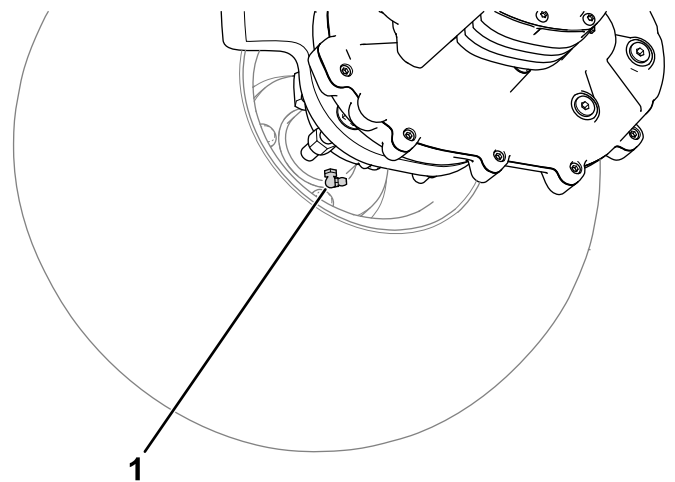


Figure 6

g300937

1. Grease fitting



Count on it.