



Universal Mount Kit

Z Master® 2000 or 4000 Series Riding Mower

Model No. 147-6346

Installation Instructions

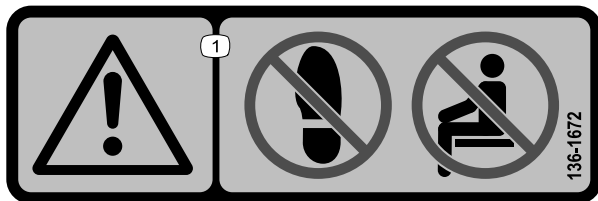
Important: If the Bagger Kit is installed on the machine, you cannot install the Universal Mount Kit.

Safety

Safety and Instructional Decals



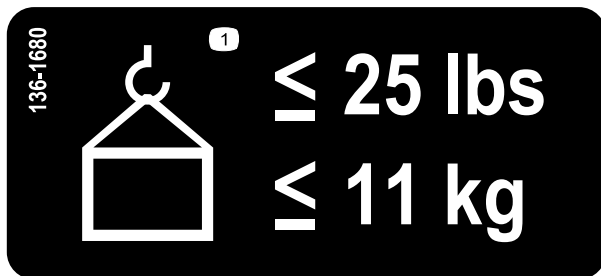
Safety decals and instructions are easily visible to the operator and are located near any area of potential danger. Replace any decal that is damaged or missing.



decal136-1672

136-1672

1. Warning—do not step; no riders.



decal136-1680

136-1680

1. Maximum weight is 11 kg (25 lb)



Installation

Loose Parts

Use the chart below to verify that all parts have been shipped.

Description	Qty.	Use
No parts required	–	Prepare the machine.
Main bracket	1	Assemble the kit.
Top bracket	1	
Bottom bracket plate	1	
Top bracket plate	1	
Carriage bolt (5/16 x 7/8 inch)	4	
Nut (5/16 inch)	3	
Knob	1	
Hinge bracket	1	
Nut (1/4 inch)	1	
Bolt (1/4 x 4-1/4 inches)	1	
Bolt (5/16 x 3 inches)	2	Mount the kit to the machine.
Nut (5/16 inch)	2	
Carriage bolt (1/4 x 1 inch)	1	
Nut (1/4 inch)	1	
Front-weight kit (sold separately)	1	Install a front-weight kit (if needed).

Preparing the Machine

1. Park the machine on a level surface.
2. Move the motion-control levers to the NEUTRAL-LOCK position.
3. Engage the parking brake.
4. Shut off the engine, remove the key, and wait for all movement to stop before you leave the operator's position.
5. Allow the machine to cool before adjusting, servicing, cleaning, or storing it.

Assembling the Kit

Assemble the kit as shown in [Figure 1](#). Do not overtighten the bolt (1/4 x 4-1/4 inches) and nut (1/4 inch); the hinge bracket must pivot freely.

Important: Secure the bottom bracket plate to the machine before installing the hinge bracket.

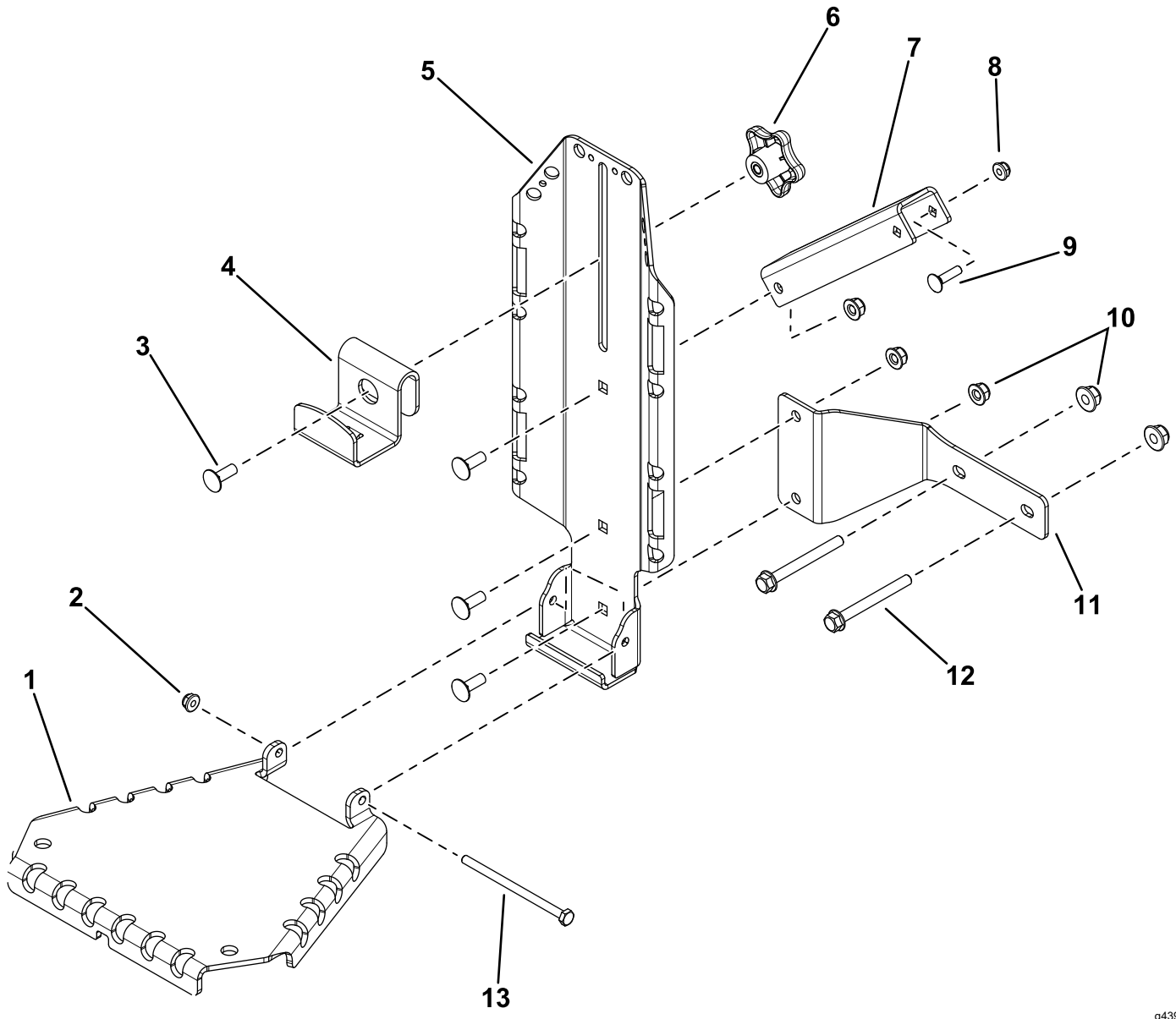


Figure 1

g439098

- | | | | |
|------------------------------------|----------------------|---------------------------------|-------------------------------|
| 1. Hinge bracket | 5. Main bracket | 9. Carriage bolt (1/4 x 1 inch) | 13. Bolt (1/4 x 4-1/4 inches) |
| 2. Nut (1/4 inch) | 6. Knob | 10. Nut (5/16 inch) | |
| 3. Carriage bolt (5/16 x 7/8 inch) | 7. Top bracket plate | 11. Bottom bracket plate | |
| 4. Top bracket | 8. Nut (1/4 inch) | 12. Bolt (5/16 x 3 inches) | |

Mounting the Kit to the Machine

Mounting Locations

You can mount this kit in 2 locations on the machine ([Figure 2](#)). Refer to the following procedures to mount the kit in the desired location.

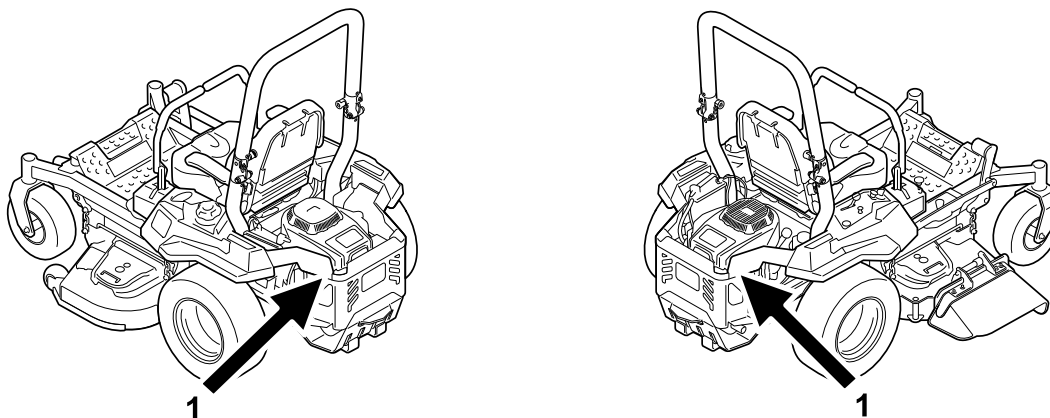


Figure 2

g437410

1. Side of the engine guard
-

Mounting the Kit to the Side of the Engine Guard

⚠ WARNING

The engine can become very hot. Touching a hot engine can cause severe burns.

Allow the engine to cool completely before service or making repairs around the engine area.

1. Secure the mount assembly to the side rear guard using 1 carriage bolt (1/4 x 1 inch) and 1 nut (1/4 inch) as shown in [Figure 3](#) or [Figure 4](#).
2. Secure the bottom of the main bracket to the engine guard using 2 bolts (5/16 x 3 inches) and 2 nuts (5/16 inch) as shown in [Figure 3](#) or [Figure 4](#).

Note: Remove the 2 bolts securing the lower side rear guard to make room for the mounting bracket.

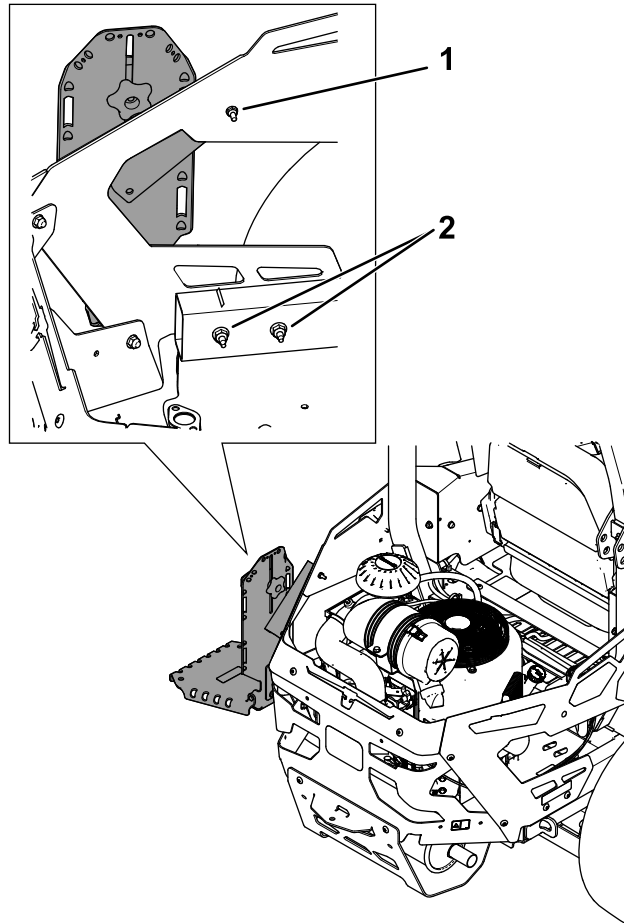


Figure 3

Mounting the kit to the left side of the engine guard

g437354

1. Bolt (5/16 x 3 inches) and nut (5/16 inch)
2. Carriage bolt (1/4 x 1 inch) and nut (1/4 inch)

Important: If you are mounting to the right side on a Z Master 4000, remove the existing bolt that secures the expansion tank to the frame. Discard this bolt and use the kit hardware to secure the bracket to the frame.

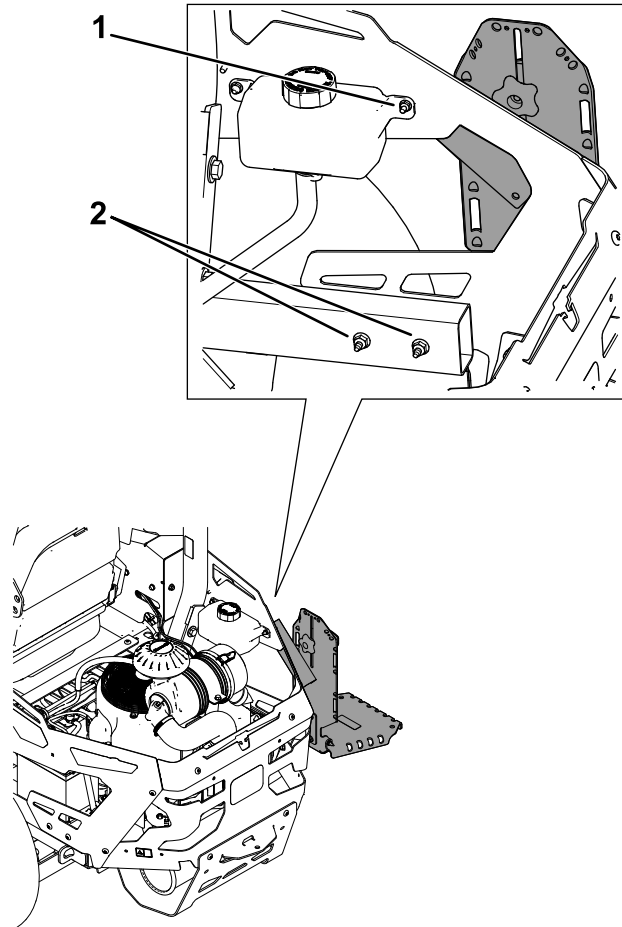


Figure 4

Mounting the kit to the right side of the engine guard

g437355

1. Bolt (5/16 x 3 inches) and nut (5/16 inch)

2. Carriage bolt (1/4 x 1 inch) and nut (1/4 inch)

Installing a Front-Weight Kit

For Machines with 2 Accessory-Mount Kits

If 2 accessory-mount kits (i.e., bucket kit or universal mount kit) are added to both of the mounting locations shown in [Figure 5](#), add a front-weight kit. Contact your Authorized Service Dealer for the front-weight kit.

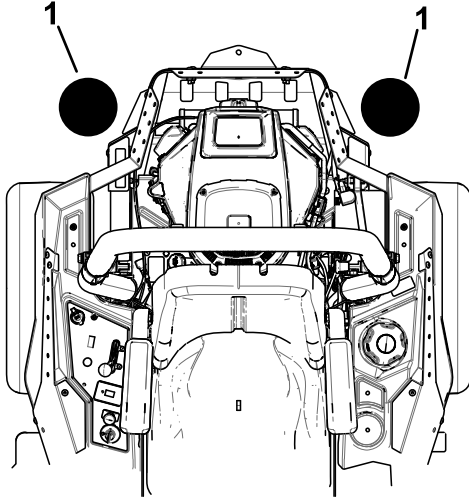


Figure 5

g437356

1. Add a front-weight kit when 2 accessory-mount kits are installed at these positions.

Operation

Mounting Attachments

Use only Toro-approved attachments and accessories. The maximum capacity is 11.3 kg (25 lb).

Use the top bracket and hinge bracket for mounting attachments or accessories; secure them using the holes in the mounting brackets.

Secure the hinge bracket when not in use; refer to [Securing the Hinge Bracket](#) (page 8).

Mounting a Bucket

Note: If desired, you can remove the hinge bracket and mount the bucket using the welded support bracket.

1. Loosen the knob and raise the top bracket. Tighten the knob to hold it in place ([Figure 6](#)).
2. If you removed the hinge bracket, place the bottom lip of the bucket over the bottom ledge of the welded support bracket ([Figure 6](#)).
3. Loosen the knob and lower the top bracket as far as possible over the rim of the bucket. Tighten the knob ([Figure 6](#)).

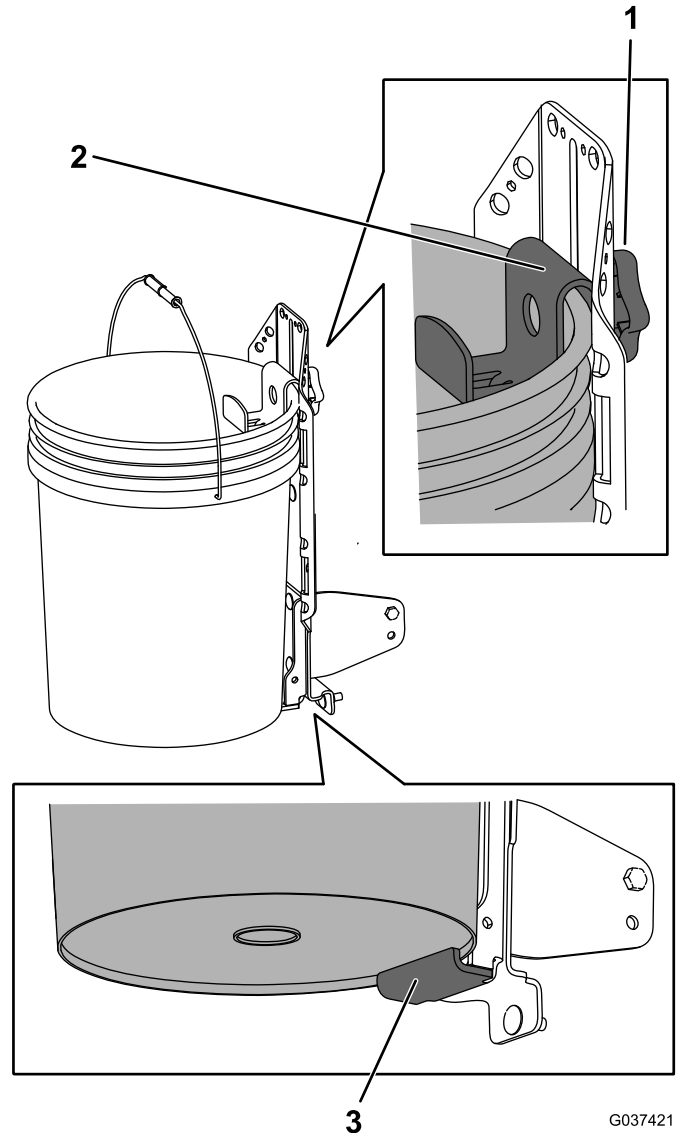


Figure 6

G037421
g037421

1. Knob
2. Top bracket over the rim of the bucket
3. Bottom ledge of the support bracket

Securing the Hinge Bracket

1. Raise the hinge bracket.
2. Loosen the knob and lower the top bracket, inserting the tab into the notch in the hinge bracket (Figure 7).
3. Tighten the knob.

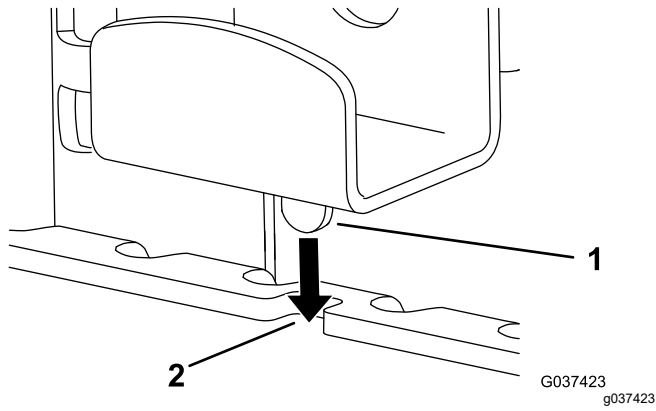


Figure 7

1. Tab in top bracket
 2. Notch in hinge bracket
-