



# Bucket Mount Kit

Z Master® 2000 or 4000 Series Riding Mower

Model No. 147-6345

## Installation Instructions

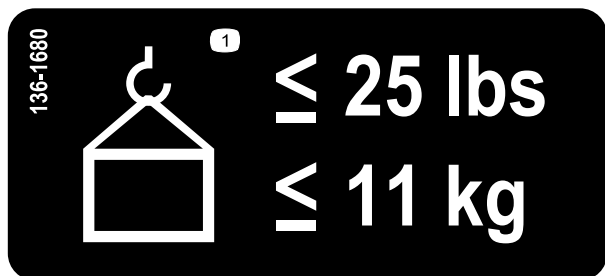
**Important:** If the Bagger Kit is installed on the machine, you cannot install the Bucket Mount Kit.

# Safety

## Safety and Instructional Decals



Safety decals and instructions are easily visible to the operator and are located near any area of potential danger. Replace any decal that is damaged or missing.



136-1680

decal136-1680

1. Maximum weight is 11 kg (25 lb)



# Installation

## Loose Parts

Use the chart below to verify that all parts have been shipped.

Description	Qty.	Use
No parts required	–	Prepare the machine.
Main bracket	1	Assemble the kit.
Top bracket	1	
Bottom bracket plate	1	
Top bracket plate	1	
Carriage bolt (5/16 x 7/8 inch)	4	
Nut (5/16 inch)	3	
Knob	1	
Bolt (5/16 inch x 3 inches)	2	Mount the kit to the machine.
Nut (5/16 inch)	2	
Carriage bolt (1/4 x 1 inch)	1	
Nut (1/4 inch)	1	
Front-weight kit (sold separately)	1	Install a front-weight kit (if needed).

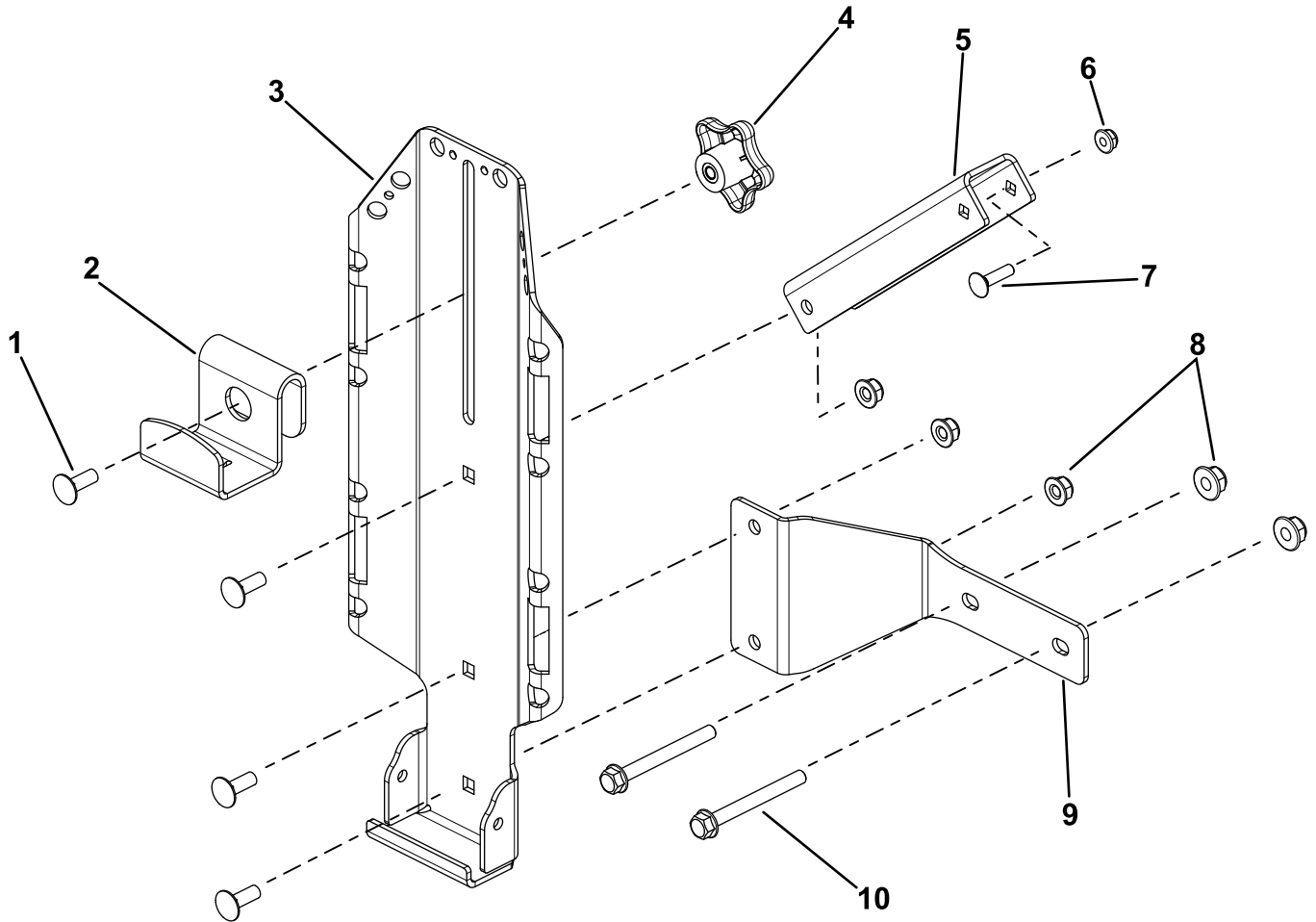
## Preparing the Machine

1. Park the machine on a level surface.
2. Move the motion-control levers to the NEUTRAL-LOCK position.
3. Engage the parking brake.
4. Shut off the engine, remove the key, and wait for all movement to stop before you leave the operator's position.
5. Allow the machine to cool before adjusting, servicing, cleaning, or storing it.

# Assembling the Kit

Assemble the kit as shown in [Figure 1](#).

**Note:** Install the lower support bracket only if you are mounting the kit in front of the rear tires. Install the bracket so that the large face is oriented rearward on the machine; [Figure 1](#) shows the bracket orientation for mounting the kit on the left side of the machine.



**Figure 1**

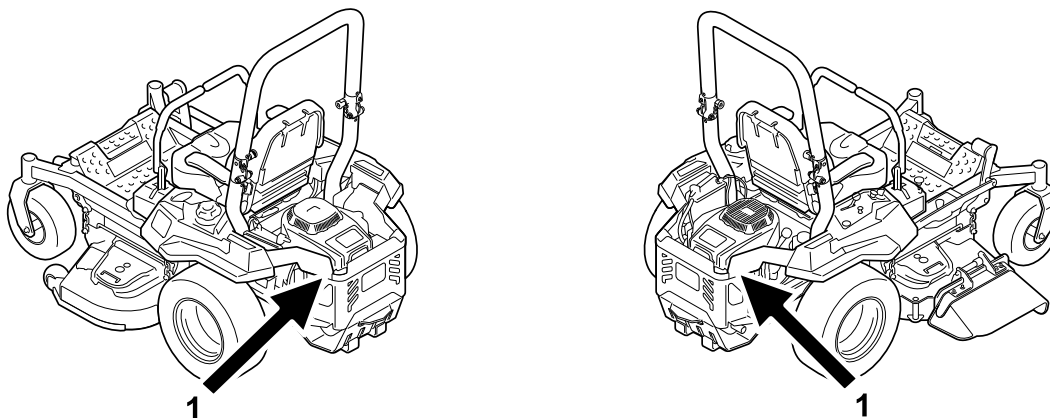
g439097

- |                                    |                      |                                 |                            |
|------------------------------------|----------------------|---------------------------------|----------------------------|
| 1. Carriage bolt (5/16 x 7/8 inch) | 4. Knob              | 7. Carriage bolt (1/4 x 1 inch) | 10. Bolt (5/16 x 3 inches) |
| 2. Top bracket                     | 5. Top bracket plate | 8. Nut (5/16 inch)              |                            |
| 3. Main bracket                    | 6. Nut (1/4 inch)    | 9. Bottom bracket plate         |                            |

# Mounting the Kit to the Machine

## Mounting Locations

You can mount this kit in 2 locations on the machine ([Figure 2](#)). Refer to the following procedures to mount the kit in the desired location.



**Figure 2**

g437410

1. Side of the engine guard
-

# Mounting the Kit to the Side of the Engine Guard

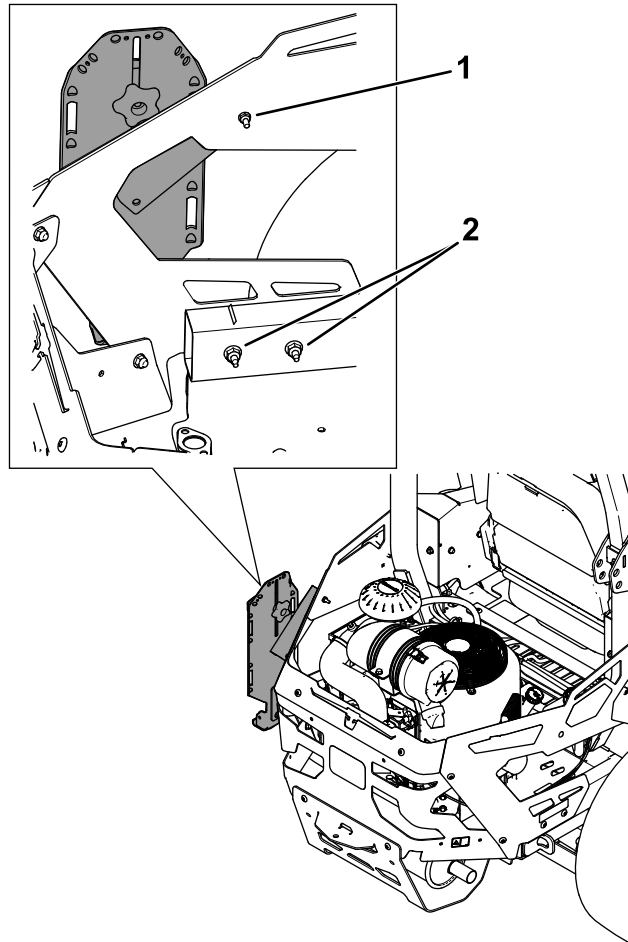
## **⚠ WARNING**

The engine can become very hot. Touching a hot engine can cause severe burns.

Allow the engine to cool completely before service or making repairs around the engine area.

1. Secure the mount assembly to the side rear guard using 1 carriage bolt (1/4 x 1 inch) and 1 nut (1/4 inch) as shown in [Figure 3](#) or [Figure 4](#).
2. Secure the bottom of the main bracket to the lower side rear guard using 2 bolts (5/16 x 3 inches) and 2 nuts (5/16 inch) as shown in [Figure 3](#) or [Figure 4](#).

**Note:** Remove the 2 bolts securing the engine guard to make room for the mounting bracket.



**Figure 3**

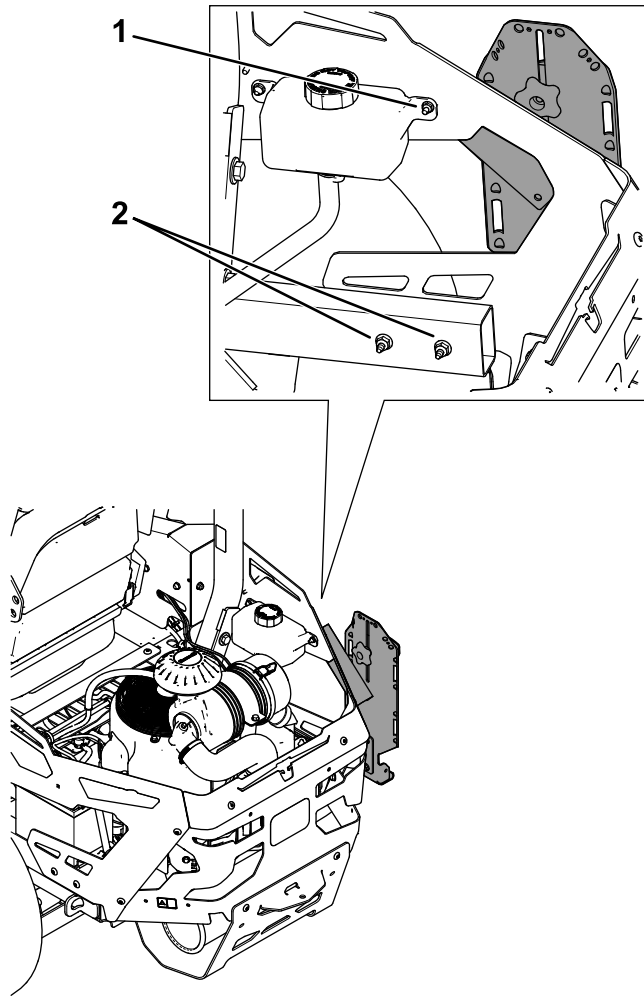
Mounting the kit to the left side of the engine guard

g437350

1. Carriage bolt (1/4 x 1 inch) and nut (1/4 inch)

2. Bolt (5/16 x 3 inches) and nut (5/16 inch)

**Important:** If you are mounting to the right side of a Z Master 4000, remove the existing bolt that secures the expansion tank to the frame. Discard this bolt and use the kit hardware to secure the bracket to the frame.



**Figure 4**

Mounting the kit to the right side of the engine guard

g437351

1. Carriage bolt (1/4 x 1 inch) and nut (1/4 inch)

2. Bolt (5/16 x 3 inches) and nut (5/16 inch)

# Installing a Front-Weight Kit

## For Machines with 2 Accessory-Mount Kits

If 2 accessory-mount kits (i.e., bucket kit or universal mount kit) are added to both of the mounting locations shown in [Figure 5](#), add a front-weight kit. Contact your Authorized Service Dealer for the front-weight kit.

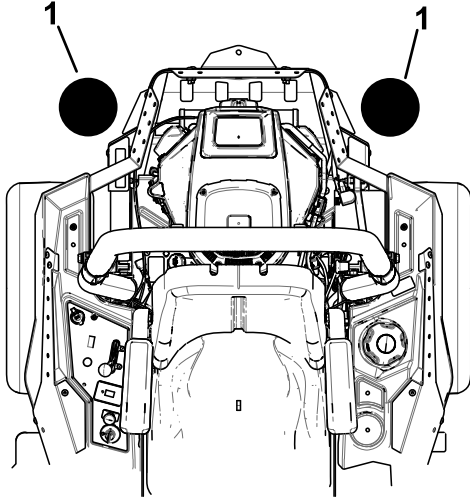


Figure 5

g437356

1. Add a front-weight kit when 2 accessory-mount kits are installed at these positions.

# Operation

## Mounting Attachments

Use only Toro-approved attachments and accessories. The maximum capacity is 11.3 kg (25 lb).

Use the holes in the mounting brackets to secure attachments or accessories.

## Mounting a Bucket

1. Loosen the knob and raise the top bracket. Tighten the knob to hold it in place ([Figure 6](#)).
2. Place the bottom lip of the bucket over the bottom ledge of the welded support bracket ([Figure 6](#)).
3. Loosen the knob and lower the top bracket as far as possible over the rim of the bucket. Tighten the knob ([Figure 6](#)).

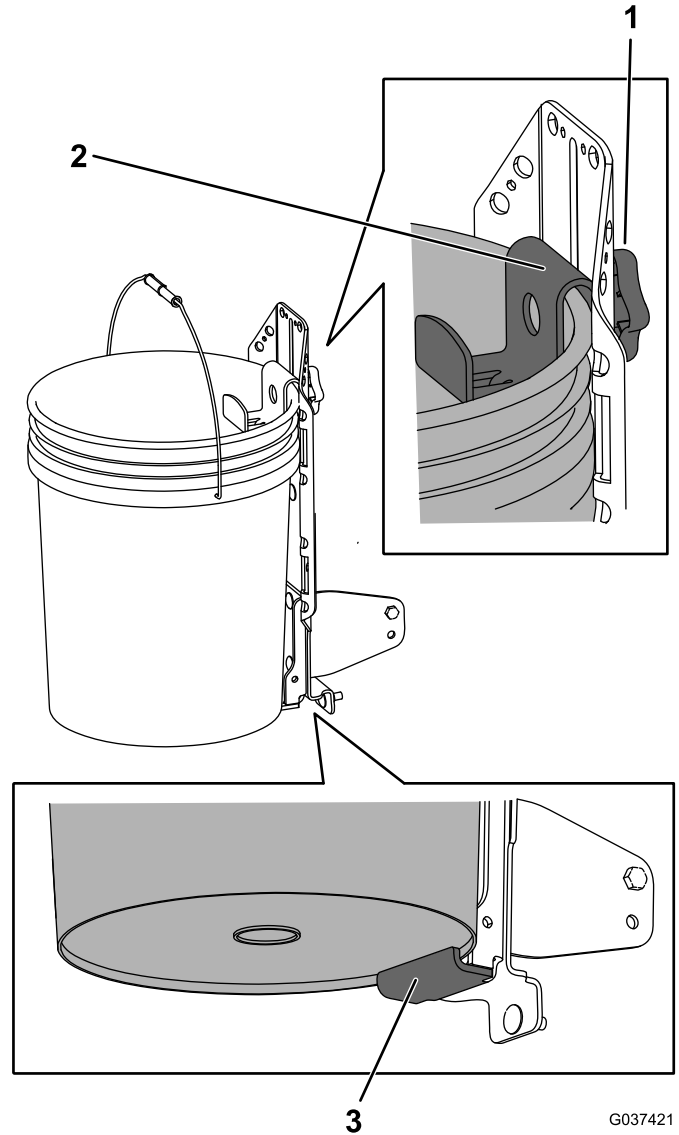


Figure 6

Fist clamp not shown

G037421  
g037421

1. Knob
2. Top bracket over the rim of the bucket
3. Bottom ledge of the support bracket



**Count on it.**