



## Bore Drive Head Attachment Dingo<sup>®</sup> Compact Utility Loader

Model No. 22420 - 240000001 and up.

### Parts Catalog

---

#### Ordering Replacement Parts

To order replacement parts, please supply: the part number, the quantity, and the description of each part desired.

#### Understanding Reference Numbers

Each identified part in an illustration has a reference number. The reference number for a part also appears in the parts list, along with other information about the part.

This catalog uses two special reference number formats, one to indicate parts in a service assembly and another to indicate the quantity of a given part in an illustration.

#### Service Assembly Reference Numbers

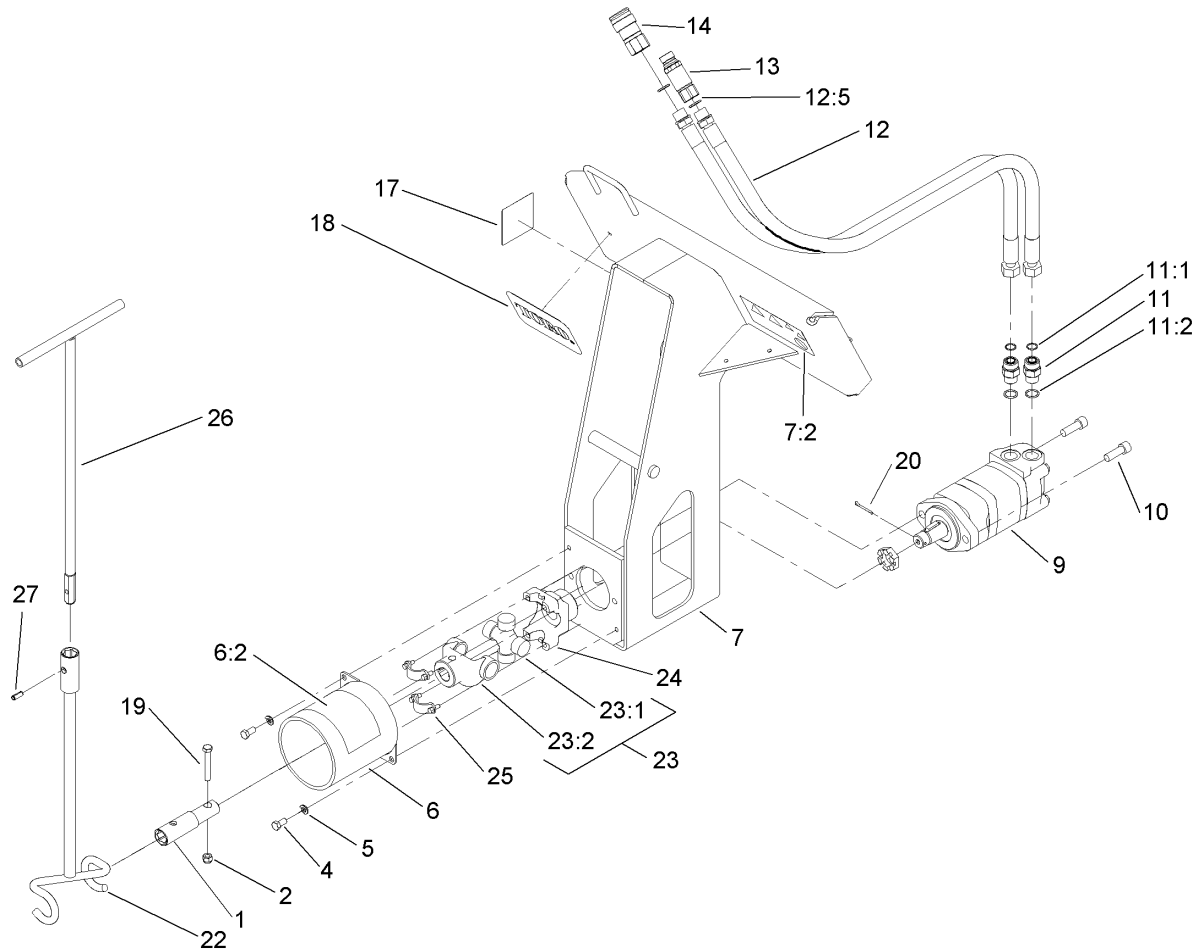
Parts in service assemblies have reference numbers in the form **a:b**. The **a** represents the reference number of the entire service assembly and the **b** represents a sequential number unique to each part within the service assembly.

For example, a wheel assembly might be identified by reference number **6**, the tire by **6:1**, the valve by **6:2**, and the wheel by **6:3**. When you order the assembly identified by reference number **6**, you receive all parts identified by reference numbers **6:1**, **6:2**, and **6:3**. However, you may also order any part individually. Reference numbers of this type appear in illustrations and in part lists.

#### Reference Numbers Indicating Quantity

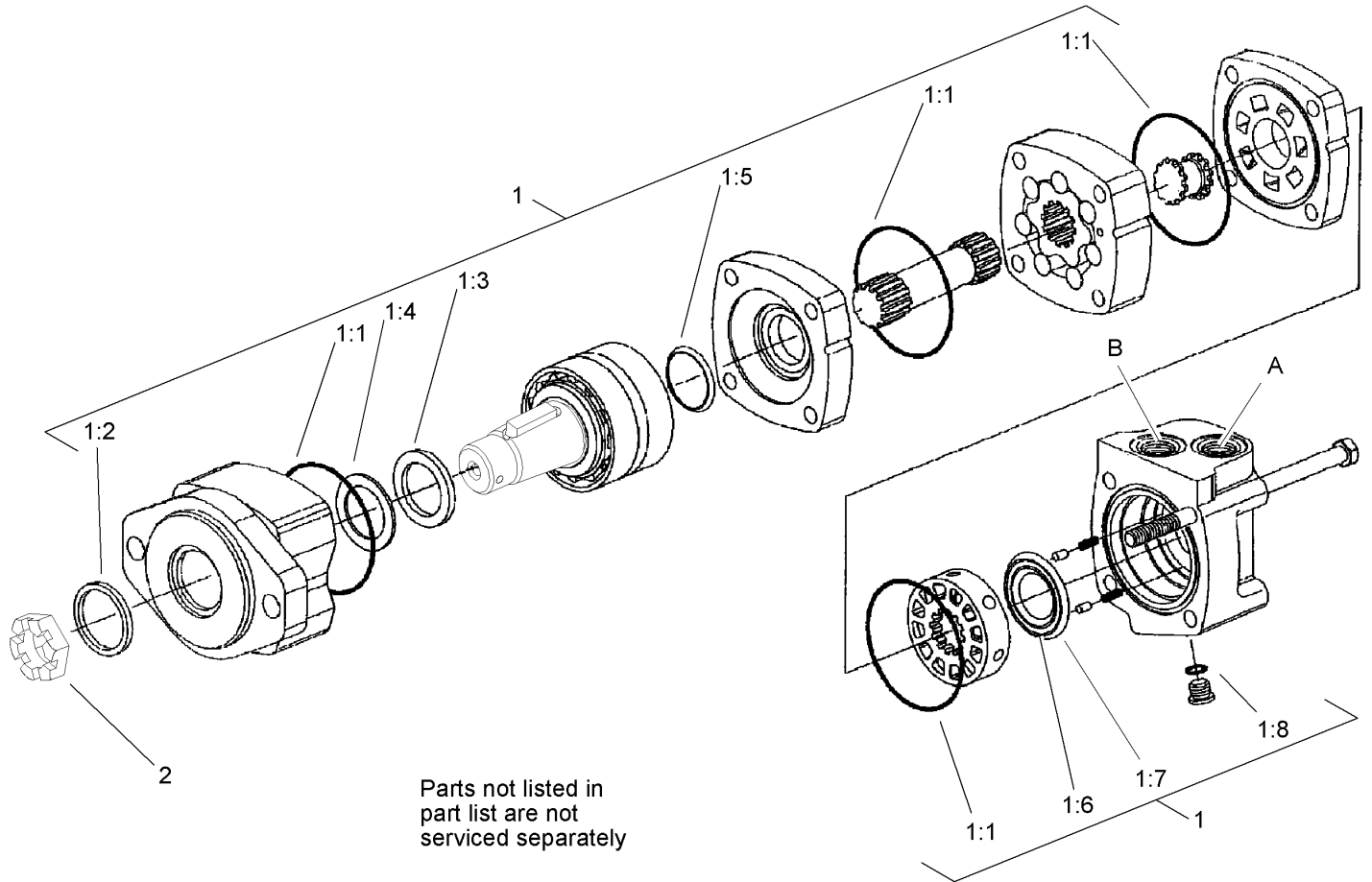
In an illustration, if a reference number indicates more than one part, the reference number has the form **nX y**. The **n** represents the quantity of the part, the **X** is the multiplication symbol, and the **y** represents the reference number.

For example, in an illustration, the reference number **2X 37** means that two of the parts identified by reference number **37** are indicated.



## Bore Drive Head Assembly

Ref	Part No.	Qty.	Description	Ref	Part No.	Qty.	Description
1	104-1896	1	Coupler ASM	23	104-5989	1	Yoke ASM
2	3296-22	1	Nut-Lock NI	23:1	99-4300	1	U-Joint
4	323-4	2	Screw-HH	23:2	104-6105	1	Yoke-U-Joint
5	3253-5	2	Washer-Lock	24	104-5917	1	Yoke-U-Bolt
6	104-1895	1	Shield ASM	25	104-5995	1	Bearing Strap Kit
6:2	99-9945	1	Decal-Warning	26	106-7740-03	1	Guide Tool Handle ASM
7	104-1894	1	Bore Frame ASM	27	32121-41	1	Pin-Roll
7:2	99-9945	1	Decal-Warning				
9	98-8280	1	Motor-Hydraulic				
10	3274-4	2	Screw-HSH				
11	340-7	2	Adapter				
11:1	237-65	1	O-Ring				
11:2	237-80	1	O-Ring				
12	104-1932	2	Hose ASM				
12:5	237-80	1	O-Ring				
13	100-4701	1	Nipple-Connect, Pressure				
13:1	100-6120	1	Seal Kit (Not Illustrated)				
14	104-6134	1	Coupler-Face, Flush				
14:1	105-8396	1	Seal Kit (Not Illustrated)				
17	98-3269	1	Decal-Made In Usa				
18	93-7340	1	Decal				
19	323-47	1	Screw-HH				
20	3272-15	1	Pin-Cotter				
22	104-5988-03	1	Rod Guide Tool ASM				



## Hydraulic Motor Assembly No. 98-8280

Ref	Part No.	Qty.	Description
1	56-6890	1	Kit-Seal
1:1		4	O-Ring (Not Serviced Separately)
1:2		1	Seal-Exclusion, Shaft (Not Serviced Separately)
1:3		1	Seal-Shaft (Not Serviced Separately)
1:4		1	Ring-Back-Up (Not Serviced Separately)
1:5		1	Seal-Face, Shaft (Not Serviced Separately)
1:6		1	Seal-Face, Inner (Not Serviced Separately)
1:7		1	Seal-Face, Outer (Not Serviced Separately)
1:8		1	O-Ring (Not Serviced Separately)
2	99-3139	1	Nut-Slotted

--	--	--	--

