



# 52" Discharge Chute Retrofit Kit

100 Series Z Master

200 Series Z Master

Part No. 106-5470

Part No. 106-5451

Form No. 3328-102

## Installation Instructions

### Loose Parts

Description	Qty.	Use
Discharge bracket	1	Installing the discharge bracket
Bolt, 5/16 x 3/4 inch	7	
Flange nut, 5/16 inch	7	
Grass deflector	1	Installing the grass deflector
Spacer	1	
Spring	1	
Bolt, 5/16 x 7-1/2 inch	1	
Locknut, 5/16 inch	1	

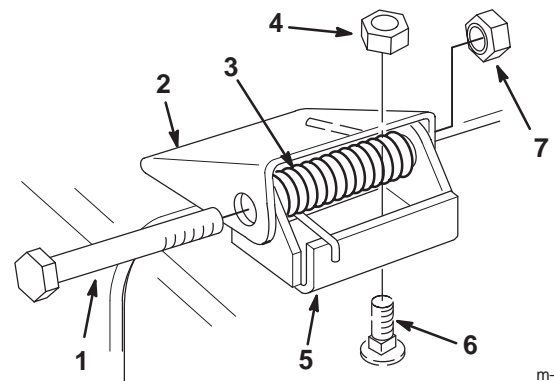


### Warning



An uncovered discharge opening could allow the lawn mower to throw objects in the operator's or bystander's direction and result in serious injury. Also, contact with the blade could occur.

Never operate the lawn mower unless you install a cover plate, a mulch plate, grass deflector, or a grass chute and catcher.



m-2549

### Removing the Existing Grass Deflector

1. Remove the existing grass deflector and deflector mounts (Fig. 1). Discard the grass deflector and mounts.

Figure 1

- |                    |                  |
|--------------------|------------------|
| 1. Bolt            | 5. Pivot Bracket |
| 2. Deflector mount | 6. Carriage Bolt |
| 3. Spring          | 7. Locknut       |
| 4. Cone Locknut    |                  |

2. Thoroughly clean the mower discharge opening. All debris must be removed to ensure the discharge bracket will fit properly against the mower.
3. Repair all bent or damaged areas of mower and replace any missing parts.

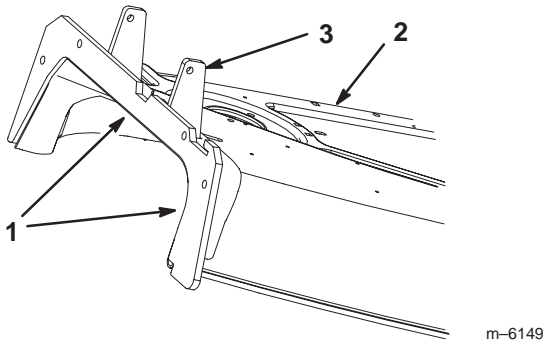
## Installing the Deflector Bracket

**Note:** If they are installed, remove any bolts from the bagger tunnel baffles that interfere with the installation of the discharge bracket.

**Note:** There are no existing holes in the mower to use for installing the deflector bracket.

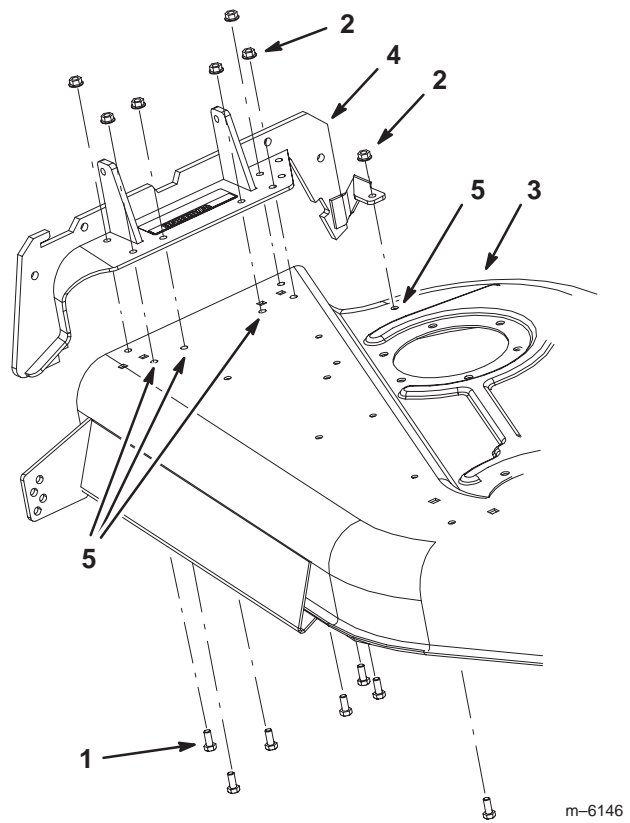
1. Place the discharge bracket on top of the discharge tunnel (Fig. 2).
2. Align the discharge bracket flush with the outside of the discharge tunnel (Fig. 2).

**Note:** Make sure the discharge bracket is flush with the outside of the discharge opening (Fig. 2).



**Figure 2**

- |                        |                      |
|------------------------|----------------------|
| 1. Flush to mower edge | 3. Deflector bracket |
| 2. Mower               |                      |



**Figure 3**

- |                          |                      |
|--------------------------|----------------------|
| 1. Bolt, 5/16 x 3/4 inch | 4. Deflector bracket |
| 2. Flange nut, 5/16 inch | 5. Hole to drill     |
| 3. Mower                 |                      |

3. Clamp the discharge bracket to the mower.
4. Using the discharge bracket as a template, drill nine holes (11/32 inch dia.) into the top of the mower (Fig. 3).

**Note:** Only 7 holes will be used for installing the deflector bracket. The remaining two holes are for the soft bagger installation.

5. If a bagger is to be installed, install the discharge bracket to the mower with 7 bolts (5/16 x 3/4 inch) and 7 flange nuts (5/16 inch) (Fig. 3). **Install the bolts in the holes shown in Using the Correct Holes for Z Master Baggers on page 3.**
6. If no bagger is to be installed, install the discharge bracket to the mower with 7 bolts (5/16 x 3/4 inch) and 7 flange nuts (5/16 inch) (Fig. 3).

**Important** Make sure the bolt heads are installed on the inside of the cutting chamber. See Figure 3.

## Installing the Grass Deflector



### Warning



**An uncovered discharge opening could allow the lawn mower to throw objects in the operator's or bystander's direction and result in serious injury. Also, contact with the blade could occur.**

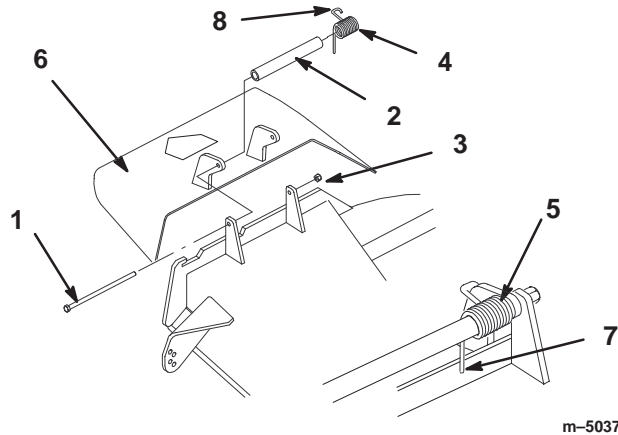
**Never operate the lawn mower unless you install a cover plate, a mulch plate, or a grass chute and catcher.**

1. Place spacer and spring onto grass deflector. Place the straight end of spring behind deck edge (Fig. 4).

**Note:** Make sure the straight end of spring is installed behind deck edge before installing the bolt as shown in Figure 4.

2. Install the bolt (5/16 x 7-1/2 inch) and the lock nut (5/16 inch). Place hook end of spring around grass deflector (Fig. 4).

**Important** The grass deflector must be able to lower down into position. Lift the deflector up to test that it lowers into the full down position.



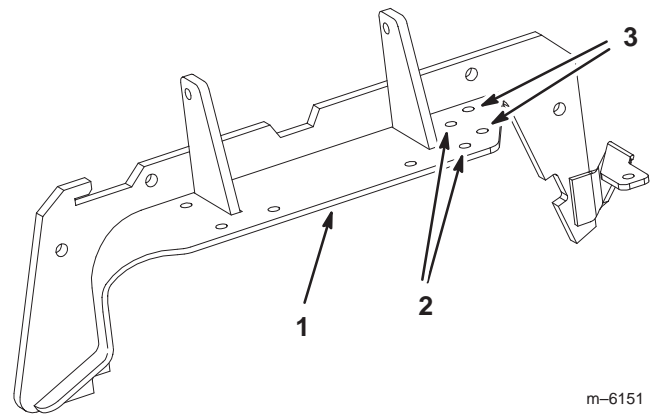
**Figure 4**

- |                            |  |
|----------------------------|--|
| 1. Bolt, 5/16 x 7-1/2 inch | 6. Grass Deflector                               |
| 2. Spacer                  | 7. Place behind deck edge before installing bolt |
| 3. Locknut, 5/16 inch      | 8. Hook end of spring                            |
| 4. Spring                  |  |
| 5. Spring installed        |  |

## Using the Correct Holes for Z Master Baggers

There are two baggers, the Soft Bagger and the DFS Bagger, that have extra instructions needed to install the discharge bracket and tunnel baffles.

**Note:** Make sure to use the correct holes specified in **Figure 5** for your bagger.



m-6151

**Figure 5**

- |                      |                      |
|----------------------|----------------------|
| 1. Deflector bracket | 3. Soft Bagger holes |
| 2. DFS Bagger holes  |                      |

1. For the Soft Bagger, refer to Installing the Baffles for the Z Master DFS Baggers Only on page 3.
2. For the Soft Bagger, refer to Installing the Baffles for the Z Master Soft Baggers Only on page 4.

## Installing the Baffles for the Z Master DFS Baggers Only

**Note:** This section is **only** needed when installing the front and rear baffles for a **Z Master DFS Bagger**.

### Installing the Front Tunnel Baffle

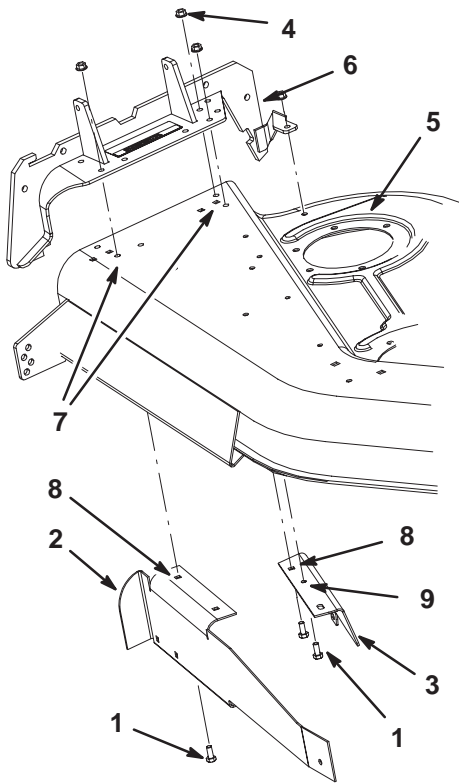
**Note:** There are no holes to drill for the front tunnel baffle.

Use the existing hole in the front tunnel baffle. See Figure 6.

1. If the discharge bracket is installed before the front tunnel baffle, remove the one front baffle bolt (5/16 x 3/4 inch) shown in Figure 6.
2. Install the front baffle as instructed in the Boot and Tube Kit.

3. Install the front tunnel baffle to the mower and the deflector bracket using one bolt (5/16 x 3/4 inch) and a flange nut (5/16 inch) (Fig. 6).

**Important** Make sure the bolt head is installed on the inside of the cutting chamber. See Figure 6.



m-6142

**Figure 6**

- |  |                      |
|--|----------------------|
| 1. Bolt, 5/16 x 3/4 inch                       | 5. Mower             |
| 2. Front tunnel baffle—for Z Master DFS bagger | 6. Deflector bracket |
| 3. Rear tunnel baffle—for Z Master DFS bagger  | 7. Use this hole     |
| 4. Flange nut                                  | 8. Existing hole     |
|  | 9. Drill this hole   |

### Installing the Rear Tunnel Baffle

1. Install the rear tunnel baffle as instructed in the Boot and Tube Kit.
2. Install the rear tunnel baffle using the hole drilled, in the top of the mower for the discharge bracket (Fig. 6).
3. Install the rear tunnel baffle to the mower and the deflector bracket using 1 bolt (5/16 x 3/4 inch) and 1 flange nut (5/16 inch).
4. With the discharge bracket and the rear tunnel baffle installed, drill one hole (11/32 inch dia.) into the rear tunnel baffle shown in Figure 6.
5. Install the rear tunnel baffle to the mower and the deflector bracket using 1 bolt (5/16 x 3/4 inch) and 1 flange nut (5/16 inch).

## Installing the Baffles for the Z Master Soft Baggers Only

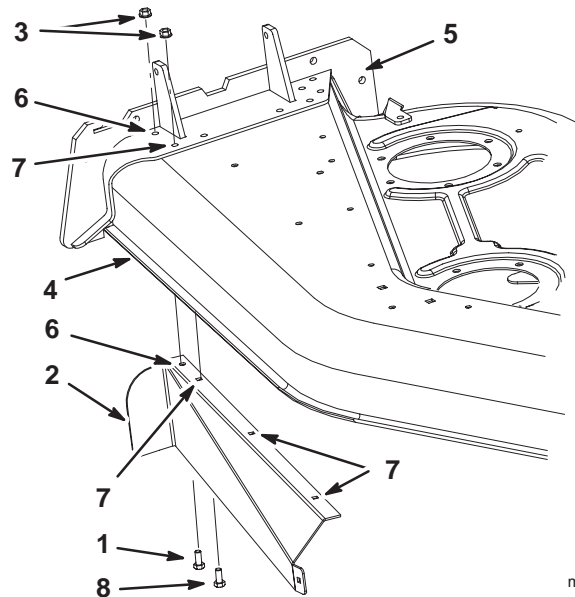
**Note:** This section is **only** needed when installing the front and rear baffles for a Z Master Soft Bagger.

### Installing the Front Tunnel Baffle

You will have to drill one new hole into the front tunnel baffle using the discharge bracket as a template.

1. If the deflector bracket is installed before the front tunnel baffle, remove the one bolt (5/16 x 3/4 inch) and flange nut (5/16 inch) from the existing hole (Fig. 7).
2. Install the front baffle as instructed in the Finishing Kit.
3. With the discharge bracket and the front tunnel baffle installed, drill one hole (11/32 inch dia.) into the front tunnel baffle shown in Figure 7.
4. Install the front tunnel baffle to the mower and the deflector bracket using one bolt (5/16 x 3/4 inch) and a flange nut (5/16 inch) (Fig. 7).

**Important** Make sure the bolt heads are installed on the inside of the cutting chamber. See Figure 7.



m-6152

**Figure 7**

- |   |                      |
|---|----------------------|
| 1. Bolt, 5/16 x 3/4 inch                        | 5. Deflector bracket |
| 2. Front tunnel baffle—for Z Master Soft bagger | 6. Hole to drill     |
| 3. Flange nut                                   | 7. Existing hole     |
| 4. Mower  | 8. Existing bolt     |

### Installing the Rear Tunnel Baffle

There are no holes to drill into the rear tunnel baffle.