



62" Discharge Chute Retrofit Kit

200 Series Z Master Mowers

Part No. 106-5450

Form No. 3328-100

Installation Instructions

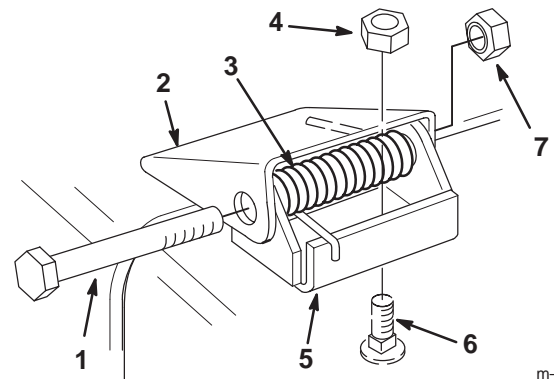
Loose Parts

Description	Qty.	Use
Discharge bracket	1	Installing the discharge bracket
Bolt, 3/8 x 3/4 in.	3	
Bolt, 5/16 x 3/4 in.	6	
Flange nut, 5/16 in.	6	
Flange nut, 3/8 in.	3	
Grass deflector	1	Installing the grass deflector
Spacer	1	
Spring	1	
Bolt, 5/16 x 7-1/2 in.	1	
Locknut, 5/16 in.	1	

⚠
Warning
⚠

An uncovered discharge opening could allow the lawn mower to throw objects in the operator's or bystander's direction and result in serious injury. Also, contact with the blade could occur.

Never operate the lawn mower unless you install a cover plate, a mulch plate, or a grass chute and catcher.



m-2549

Figure 1

Removing the Existing Grass Deflector

1. Remove the existing grass deflector and deflector mounts (Fig. 1). Discard the grass deflector and mounts.

- | | |
|--------------------|------------------|
| 1. Bolt | 5. Pivot Bracket |
| 2. Deflector mount | 6. Carriage Bolt |
| 3. Spring | 7. Locknut |
| 4. Cone Locknut | |

2. Thoroughly clean the mower discharge opening. All debris must be removed to ensure discharge bracket will fit properly against the mower.
3. Repair all bent or damaged areas of mower and replace any missing parts.

Removing Part of the Grass Deflector Bracket

Note: This section is only for mowers with grass deflector bracket welded to the mower (Fig. 2).

1. Remove a 1/4 inch of the grass deflector bracket as shown in Figure 2. This will avoid any interference with the grass deflector.

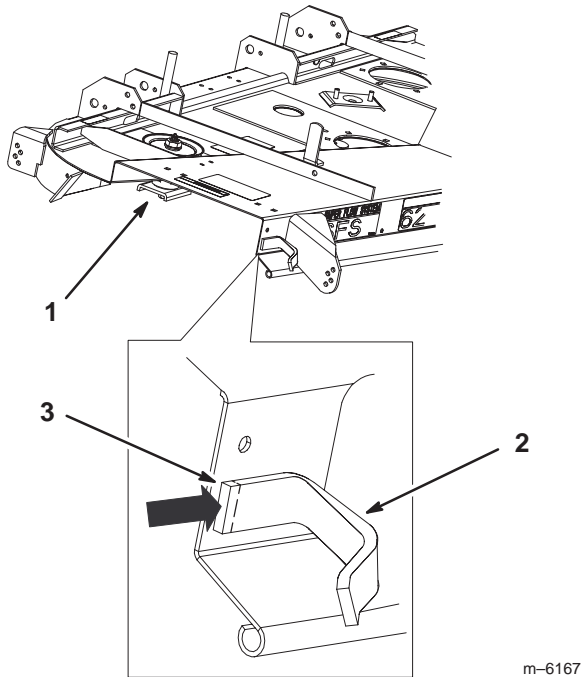


Figure 2

1. Mower
2. Grass deflector bracket
3. Remove a 1/4 inch

Installing the Discharge Bracket

Note: There are 3 existing holes in the mower for installing the discharge bracket.

1. Place the discharge bracket on top of the discharge tunnel (Fig. 3).
2. Align the discharge bracket flush with the outside of the discharge tunnel and with the holes in the mower (Fig. 3).

Note: Make sure the discharge bracket is flush with the outside of the discharge opening.

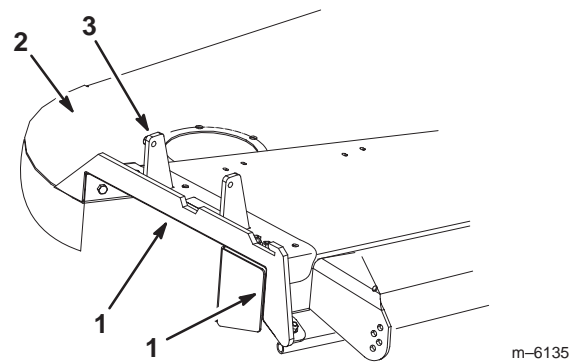


Figure 3

1. Flush to mower edge
2. Mower
3. Discharge bracket

3. Install the discharge bracket to the mower with 3 bolts (3/8 x 3/4 inch) and 3 flange nuts (3/8 inch) using the existing holes (Fig. 4).

Important Make sure the bolt heads are installed on the inside of the cutting chamber. See Figure 4.

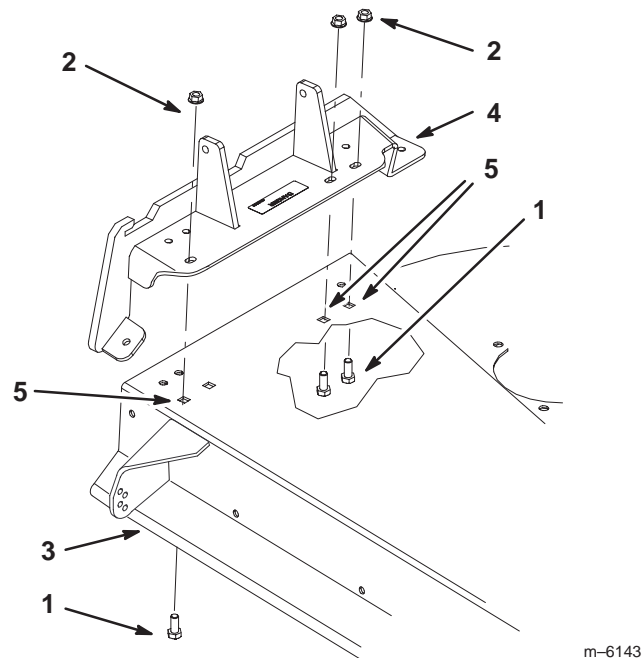


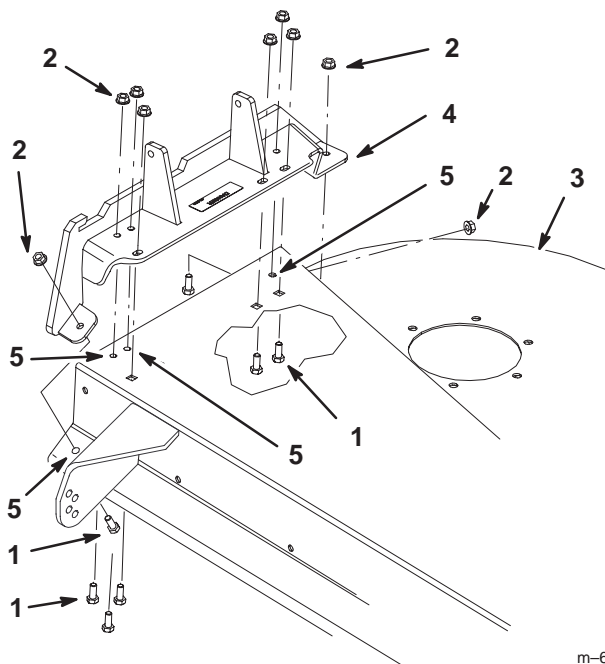
Figure 4

1. Bolt, 3/8 x 3/4 inch
2. Flange nut, 3/8 inch
3. Mower
4. Discharge bracket
5. Existing hole

4. Using the discharge bracket as a template, drill six holes (11/32 inch dia.) into the sides and top of the mower (Figures 5 and 6).

5. Install the discharge bracket to the mower with 6 bolts (5/16 x 3/4 inch) and 6 flange nuts (5/16 inch) using the existing holes (Figures 5 and 6).

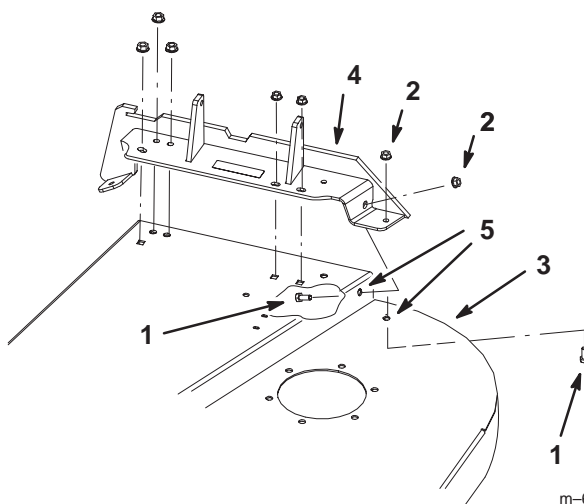
Important Make sure the bolt heads are installed on the inside of the cutting chamber. See figures 5 and 6.



m-6133

Figure 5

- | | |
|--------------------------|----------------------|
| 1. Bolt, 5/16 x 3/4 inch | 4. Discharge bracket |
| 2. Flange nut, 5/16 inch | 5. Hole to drill |
| 3. Mower | |



m-6145

Figure 6

- | | |
|--------------------------|----------------------|
| 1. Bolt, 5/16 x 3/4 inch | 4. Discharge bracket |
| 2. Flange nut, 5/16 inch | 5. Hole to drill |
| 3. Mower | |

Installing the Grass Deflector



Warning



An uncovered discharge opening could allow the lawn mower to throw objects in the operator's or bystander's direction and result in serious injury. Also, contact with the blade could occur.

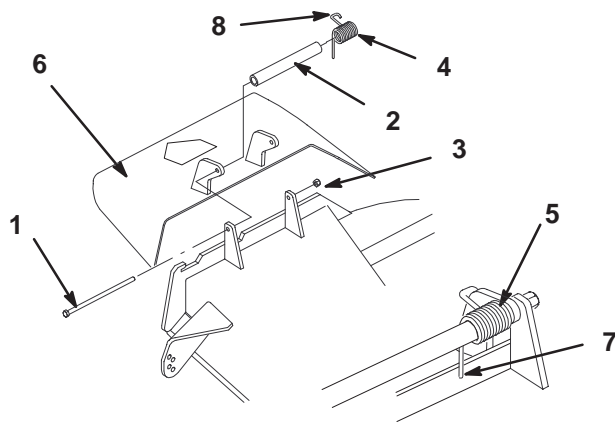
Never operate the lawn mower unless you install a cover plate, a mulch plate, or a grass chute and catcher.

1. Place spacer and spring onto grass deflector. Place the straight end of spring behind the deck edge (Fig. 7).

Note: Make sure the straight end of spring is installed behind deck edge before installing the bolt as shown in figure 7.

2. Install bolt (5/16 x 7-1/2 inch) and nut (5/16 inch). Place hook end of spring around grass deflector (Fig. 7).

Important The grass deflector must be able to lower down into position. Lift the deflector up to test that it lowers into the full down position.



m-5037

Figure 7

- | | |
|---------------------|--|
| 1. Bolt | 6. Grass Deflector |
| 2. Spacer | 7. Place behind deck edge before installing bolt |
| 3. Locknut | 8. Hook end of spring |
| 4. Spring | |
| 5. Spring installed | |

Installing the Baffles and Discharge Bracket for the Z Master DFS Bagger Only

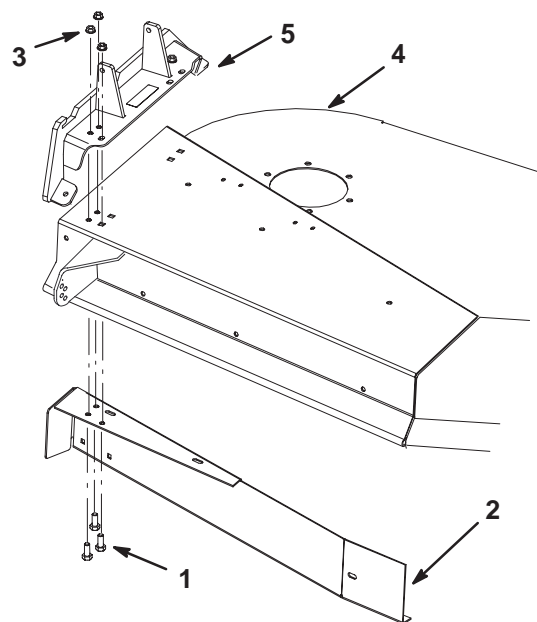
Note: This section is **only** needed when installing the rear tunnel baffle for a **Z Master DFS Bagger**.

Installing the Front Tunnel Baffle

You will have to drill three new holes (11/32 inch dia.) into the front baffle using the discharge bracket as a template.

1. With the discharge bracket installed, remove the three bolts (5/16 x 3/4 inch) shown in Figure 8.
2. Align the front baffle as instructed in the Boot and Tube Kit.
3. Clamp the discharge bracket, the mower and front tunnel baffle together.
4. Using the discharge bracket as a template, drill three holes (11/32 inch dia.) into the front tunnel baffle. See Figure 8.
5. Using 3 bolts (5/16 x 3/4 inch) and 3 flange nuts (5/16 inch) install the discharge bracket and front baffle to the mower (Fig. 8).
6. Refer to the Boot and Tube Kit for further installation of the front tunnel baffle.

Important Make sure the bolt heads are installed on the inside of the cutting chamber. See Figure 8.



m-6150

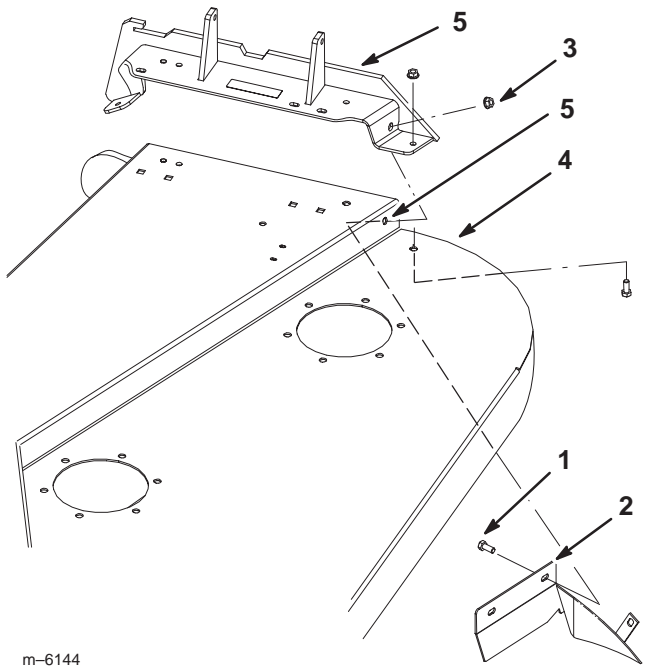
Figure 8

- | | |
|--|----------------------|
| 1. Bolt, 5/16 x 3/4 inch | 3. Flange nut |
| 2. Front tunnel baffle—for Z Master bagger | 4. Mower |
| | 5. discharge bracket |

Installing the Rear Tunnel Baffle

1. Install the rear tunnel baffle using the hole drilled, in the rear tunnel wall, for the discharge bracket (Fig. 9).
2. Refer to the Boot and Tube Kit for further installation of the rear tunnel baffle.

Important Make sure the bolt heads are installed on the inside of the cutting chamber. See Figure 9.



m-6144

Figure 9

- | | |
|--|----------------------|
| 1. Bolt, 5/16 x 3/4 inch | 4. Mower |
| 2. Rear tunnel baffle—for
Z Master DFS Bagger | 5. Discharge bracket |
| 3. Flange nut | 6. Drilled hole |

