



Harness Adapter Kit

Model No. 147-1612

Form No. 3461-656 Rev A

Installation Instructions

Installation

1

Preparing the Machine

No Parts Required

Procedure

1. Park the machine on a level surface.
2. Disengage the PTO and move the motion-control levers outward to the NEUTRAL position.
3. Shut off the engine and remove the key.
4. Raise the machine so that the tires are off the ground or disengage the transmission sun gear; refer to your machine *Operator's Manual*.

2

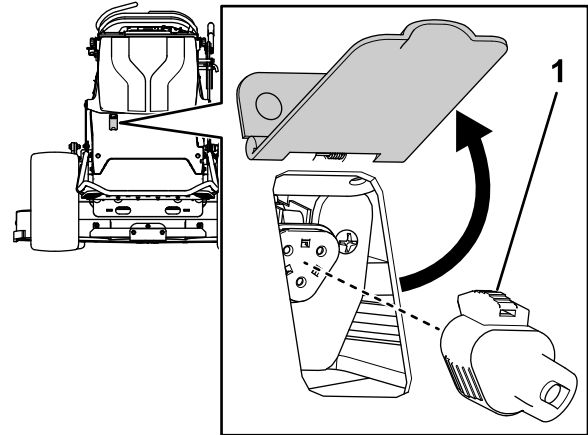
Installing the Harness Adapter Kit

Grandstand® machine

No Parts Required

Procedure

1. Flip open the wire-harness access cover at the rear of the machine and remove the connector plug (Figure 1).

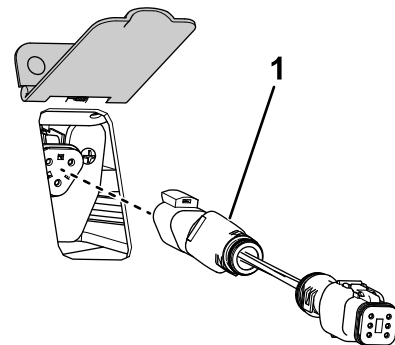


g411331

Figure 1

1. Connector plug

2. Connector the harness adapter to the connector (Figure 2).



g411344

Figure 2

1. Harness adapter



3

Installing the Harness Adapter Kit

Z Master® machine

No Parts Required

Procedure

1. Remove the connector plug that is located underneath the right rear fender of the machine (Figure 3).

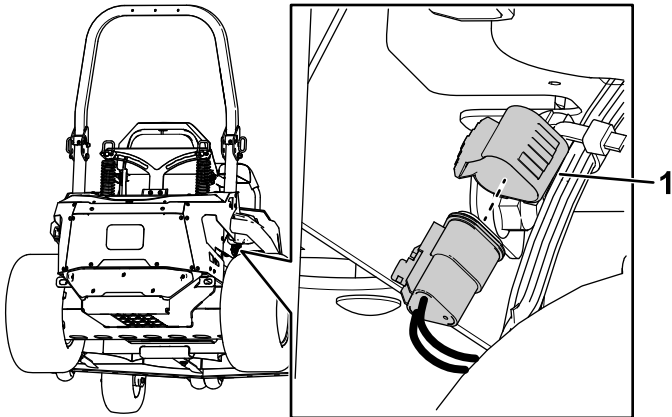


Figure 3

g425540

1. Connector plug

2. Connect the harness adapter to the connector (Figure 4).

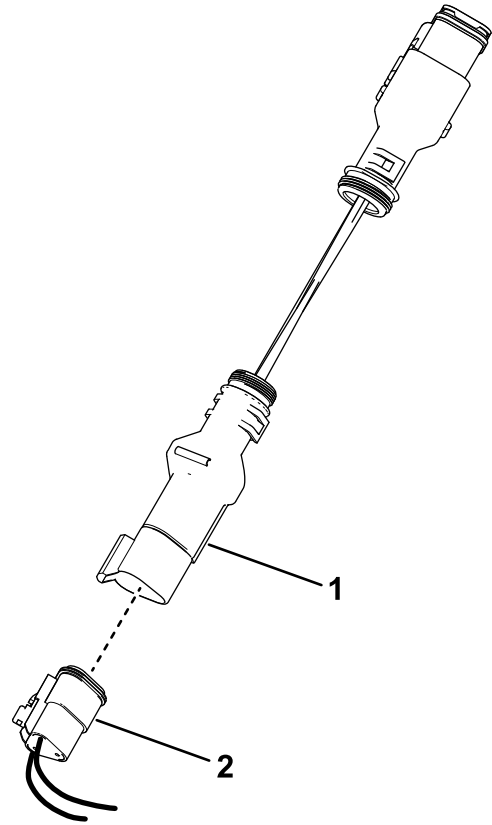


Figure 4

g425541

1. Harness adapter
2. Connector