



Weight Kit

GrandStand® Revolution Mower with TURBO FORCE® Cutting Unit

Model No. 147-0200

Installation Instructions

Preparing the Machine

1. Park the machine on a level surface.
2. Disengage the blade-control switch (PTO) and move the motion-control levers outward to the **PARK** position.
3. Shut off the machine, remove the key, and wait for all moving parts to stop before leaving the operating position.

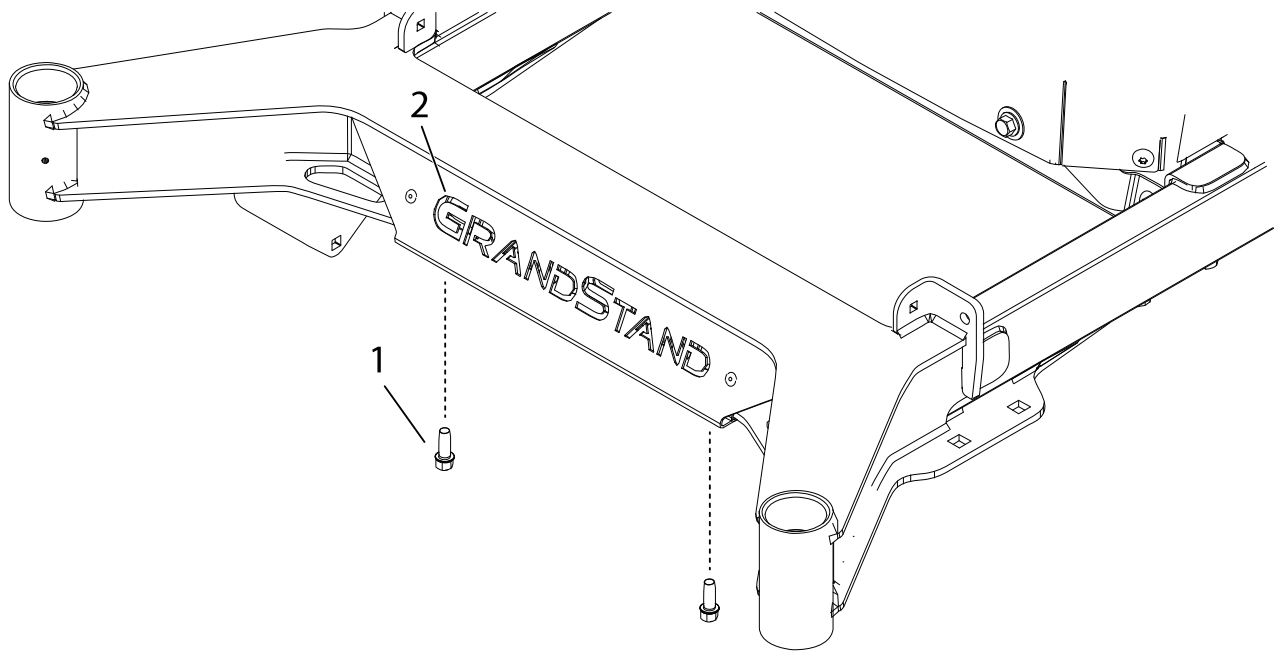
Installing the Weight Kit

Parts Required

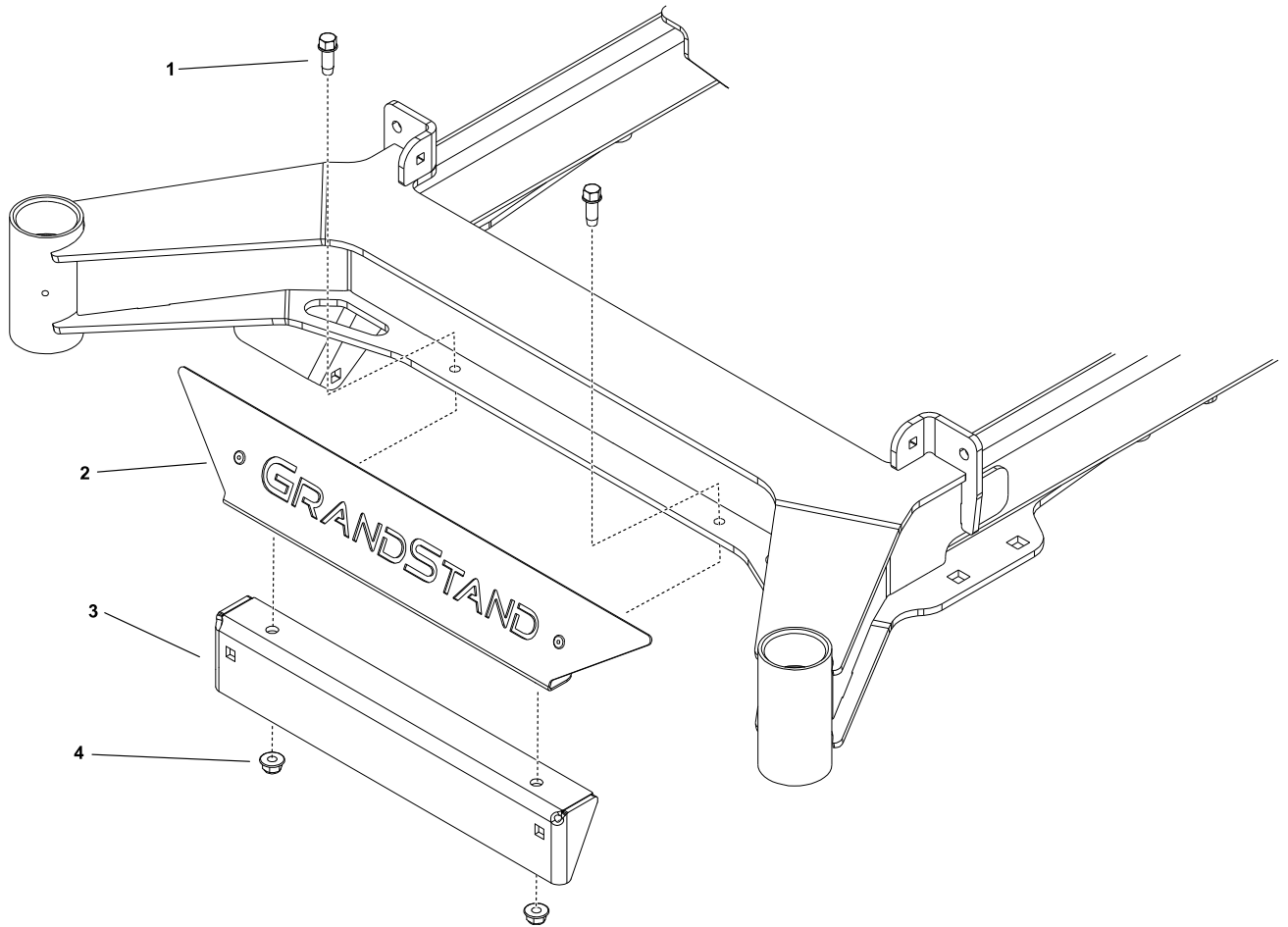
1	Weight
1	Weight mount
2	Bolt (3/8 x 2-1/4 inches)
2	Bolt (3/8 x 3 inches)
2	Bolt (3/8 x 4 inches)
4	Locknut (3/8 inch)
2	Thread-forming screw (3/8 inch)



1. Remove the bolts ① securing the front plate ② , and remove the front plate.

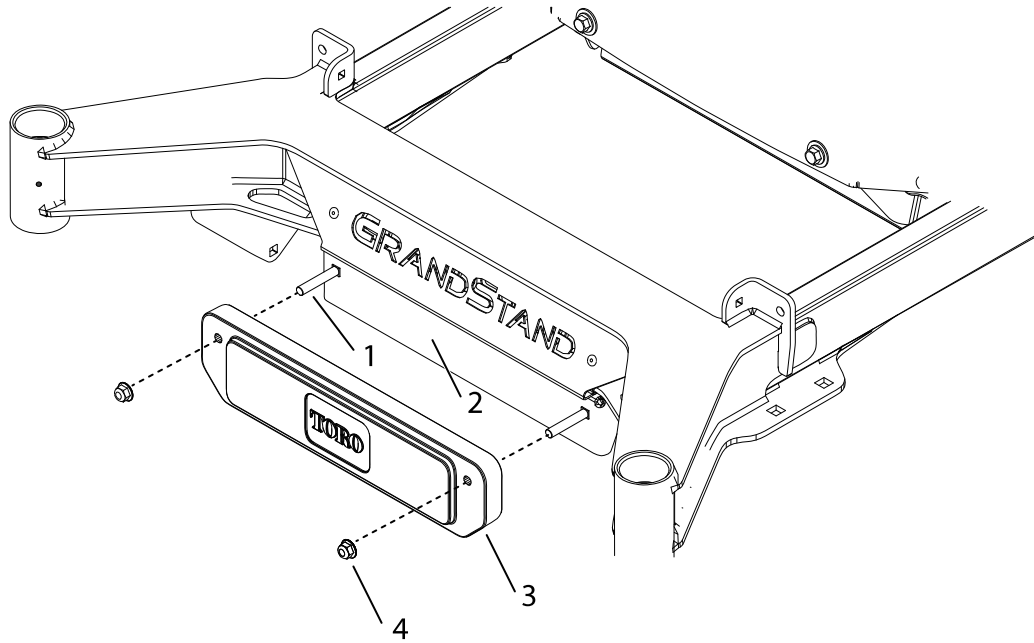


2. Install 2 thread forming screws (3/8 inch) ① from the top side of the frame plate starting by hand to prevent cross-threading in threaded hole. Then tighten with a wrench until snug.
3. Install the front plate ② and weight mount bracket ③, securing with 2 locknuts ④.



4. Install the weight(s) ③ to the mount ② using 2 bolts ① and 2 locknuts ④.

Note: This kit includes 1 weight, but you can add additional weights (sold separately) using the longer bolts included in this kit. Use the table below to determine the appropriate size bolts for the number of weights.



Number of weights	Bolt size
1	3/8 x 2-1/4 inches
2	3/8 x 3 inches
3	3/8 x 4 inches