



# Rear Roller Scraper Kit

## Greensmaster® 3200

Part No. 95-1600

Form No. 3318-603 Rev A

### Installation Instructions



#### Caution



If you leave the key in the ignition switch, someone could accidentally start the engine and seriously injure you or other bystanders.

Remove the key from the ignition and disconnect the wire from the spark plug before you do any maintenance. Set the wire aside so that it does not accidentally contact the spark plug.

1. Remove the carriage bolt and nut securing the rear of each roller collar to the roller bracket (Fig. 1).
2. Insert a 8 mm capscrew through the holes in the roller collar and roller bracket and secure it with a locknut, as shown in Figure 1.

**Note:** If the screw does not fit through the holes in the roller collar and roller bracket, enlarge the holes with a 21/64 in. diameter drill.

3. Thread a flange nut (flange up) onto each capscrew.
4. Insert the left bracket assembly onto the capscrew on the left bracket and loosely secure it with a flange nut.
5. Slide the left spring (hook outward) onto the left bracket assembly and position the hook around the bracket.
6. Insert the left end of the scraper into the hole in the bracket assembly. Position the end of the spring behind the scraper.
7. Repeat the procedure on the right end of the scraper while loosely securing the right bracket assembly to the screw on the right rear roller bracket.
8. Adjust the flange nuts up or down until the bottom edge of the scraper is the same height at each end as the top edge of the cutting unit bedknife or, the same as the height-of-cut setting.
9. Move the scraper in or out to ensure that the edge is flush with the full length of the roller, parallel to ground, and rests against the roller with equal tension at all points. Tighten the top flange nuts to secure the adjustment.

**Note:** The proper height setting and tension of the scraper against the roller are critical. If the scraper is not adjusted correctly it will not properly clean the roller, will ruffle the grass, or leave large clumps on the grass.

**Important** Spring the scraper away from the roller and thoroughly wash the cutting unit after each use. Failure to follow this practice may result in pitting of the roller.

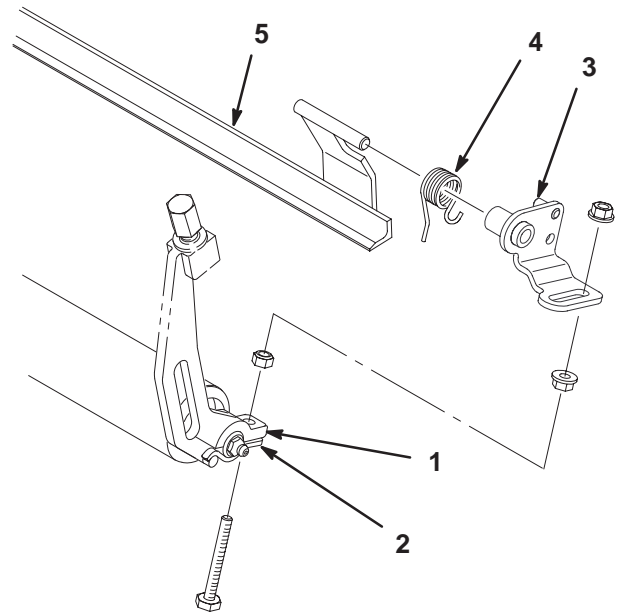


Figure 1

- |                               |                     |
|-------------------------------|---------------------|
| 1. Rear roller bracket        | 4. Left-hand spring |
| 2. Roller collar              | 5. Scraper          |
| 3. Left-hand bracket assembly |                     |