



**Pull Link Kit**  
**Greensmaster® 3200**  
 Part No. 94-9630

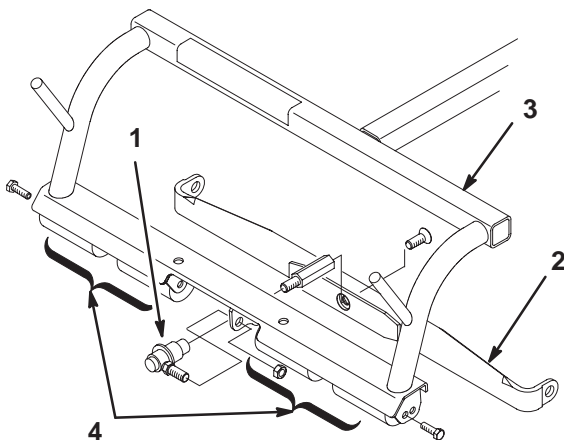
**Installation Instructions**

**Caution**

If you leave the key in the ignition switch, someone could accidentally start the engine and seriously injure you or other bystanders.

Remove the key from the ignition and disconnect the wire from the spark plug before you do any maintenance. Set the wire aside so that it does not accidentally contact the spark plug.

1. Remove the locknut securing the pull arm ball socket to the carrier frame (Fig. 1). Remove the pull arm.



**Figure 1**

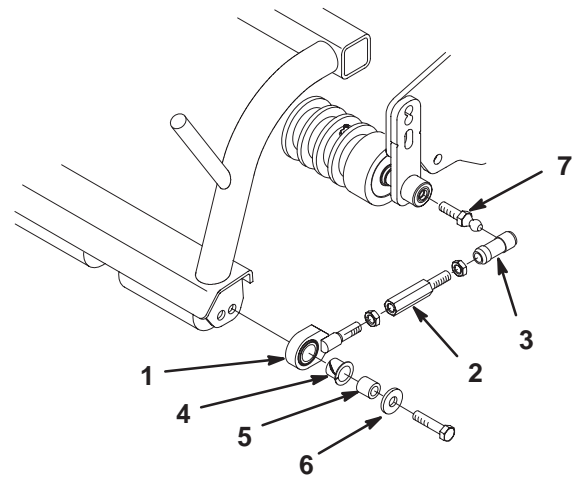
- |                |                  |
|----------------|------------------|
| 1. Ball socket | 3. Carrier frame |
| 2. Pull frame  | 4. Roller sets   |

2. Remove the capscrews securing the ends of each anti-scalp roller shaft to each end of the carrier frame (Fig. 1).
3. Loosely assemble a jam nut, pull link extension, jam nut, and ball joint receiver onto each pull link assembly as shown in Figure 2.

**Note:** If you are mounting the Greensmaster 3000 cutting units equipped with groomer attachments, do not install the pull link extension and rear jam nut to the pull link assembly.

4. Loosely mount a pull link assembly to the rear hole on each end of the carrier frame with a spacer, washer, and capscrew (Fig. 2). Make sure that the nylon bushing is in the pull link.

5. Slide the cutting unit under the pull frame while hooking the hoop onto the lift arm.
6. Slide the sleeve back on each ball joint receiver and hook them onto the cutting unit ball studs (Fig. 2). Install the ball stud (included in this kit) if it is not on the cutting unit.



**Figure 2**

- |                        |              |
|------------------------|--------------|
| 1. Pull link assembly  | 5. Spacer    |
| 2. Pull link extension | 6. Washer    |
| 3. Ball joint receiver | 7. Ball stud |
| 4. Nylon bushing       |              |

**Note:** If a groomer is installed, make sure that the ball joint receiver is installed on the ball stud at the front roller and not at the upper location on the groomer.

7. Mount the basket onto the carrier frame.

**Note:** If you are using Greensmaster 3000 cutting units, use Greensmaster 3000 baskets or remove the rubber flap from the Greensmaster 3200 baskets.

8. Adjust the pull links until there is 1/4 to 1/2 in. clearance between the lip of the basket and the reel blades. Make sure that the basket lips are equidistant from the reel blades all the way across the reel blades.
9. Tighten all of the fasteners.