



62in Mower Service Kit 200 Series Z Master®

Model No. 105-6176 - 240000001 and up.

Parts Catalog

Ordering Replacement Parts

To order replacement parts, please supply the part number, the quantity, and the description of each part desired.

Understanding Reference Numbers

Each Identified part in an illustration has a reference number. The reference number for a part also appears in the parts list, along with other information about the part.

This catalog uses two special reference number formats, one to indicate parts in a service assembly and another to indicate the quantity of a given part in an illustration.

Service Assembly Reference Numbers

Parts in service assemblies have reference numbers in the form a:b. The a represents the reference number of the entire service assembly and the b represents a sequential number unique to each part within the service assembly.

For example, a wheel assembly might be identified by reference number 6, the tire by 6:1, the valve by 6:2, and the wheel by 6:3. When you order the assembly identified by reference number 6, you receive all parts identified by reference numbers 6:1, 6:2, and 6:3. However, you may also order any part individually. Reference numbers of this type appear in illustrations and in part lists.

Reference Numbers Indicating Quantity

In an illustration, if a reference number indicates more than one part, the reference number has the form nX y. The n represents the quantity of the part, the X is the multiplication symbol, and the y represents the reference number.

For example, in an illustration, the reference number 2X 37 means that two of the parts identified by reference number 37 are indicated.

Part Description Abbreviations

Part descriptions in this catalog may include the following abbreviations.

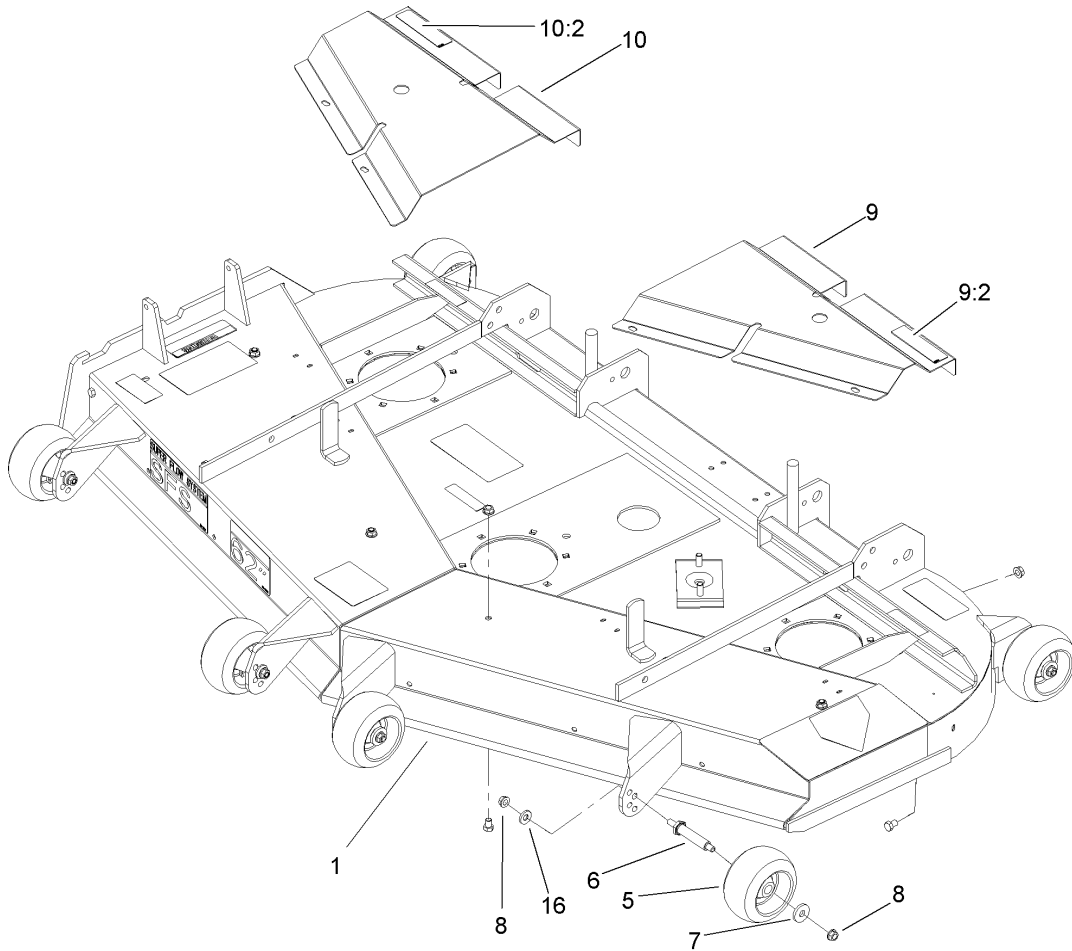
| | | | |
|-------------|--------------------------------|------------|-------------------------|
| AR. | as required | HYD. | hydraulic |
| ASM. | assembly | INC. | incorporated |
| CARR. | carriage | LH. | left hand |
| DEG. | degrees | NI. | nylon insert |
| FH. | flat head | PPH. | phillips pan head |
| GA. | gauge | PTH. | phillips truss head |
| HF. | hex flange | PTO. | power take off |
| HH. | hex head | RH. | right hand |
| HHF. | hex head flange | SFH. | slotted fillister head |
| HHFTF. | hex head flange thread forming | SHH. | slotted hex head |
| HJ. | hex jam | SHWH. | slotted hex washer head |
| HLH. | hex lag head | SPH. | slotted pan head |
| HOC. | height-of-cut | SQH. | square head |
| HS. | hex | SRH. | slotted round head |
| HSBH. | hex socket button head | STD. | standard |
| HSFH. | hex socket flat head | TAP. | self tapping |
| HS. | hex socket head | TTH. | torx truss head |
| HWH. | hex washer head | WH. | wing head |
| HWHTF. | hex washer head thread forming | | |

Footnotes

- ❶ Not serviced separately
- ❷ For use only on Liquid Cooled and Electronic Fuel Injection (EFI) Models prior to 230000001 and all Models after 230000001.

Contents

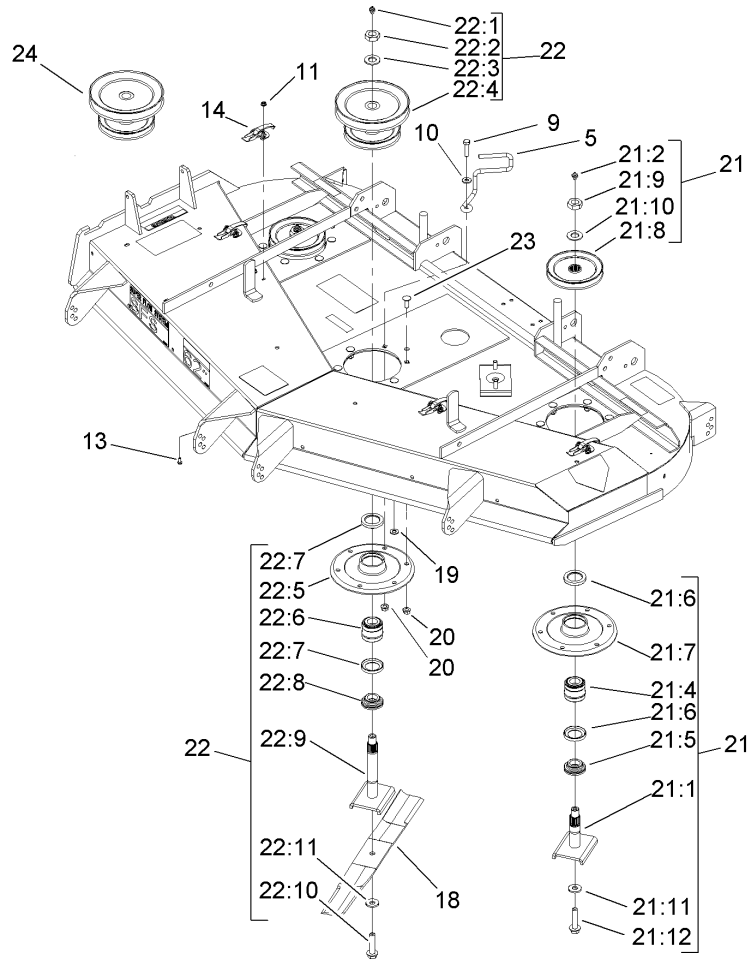
| Description | Page |
|--|---------|
| Deck and Wheel Gage Assembly | 3 |
| Deck Spindle Assembly | 4 |
| Belt and Idler Arm Assembly | 5 |
| Deck and Deflector Assembly No. 106-5864 | 6 |
| Deck Decal Assembly No. 106-5863 | 7 |



Deck and Wheel Gage Assembly

| Ref | Part No. | Qty. | Description |
|------|----------|------|-------------------|
| 1 | 106-5864 | 1 | Deck ASM |
| 5 | 68-2730 | 6 | Wheel-Gage |
| 6 | 99-2842 | 6 | Spacer |
| 7 | 1-373034 | 6 | Washer |
| 8 | 3290-357 | 18 | Nut-HHF |
| 9 | 98-5955 | 1 | LH Cover ASM |
| 9:2 | 67-5360 | 1 | Decal-Danger |
| 10 | 98-5956 | 1 | RH Cover ASM |
| 10:2 | 67-5360 | 1 | Decal-Danger |
| 16 | 98-5975 | 6 | Washer-Belleville |

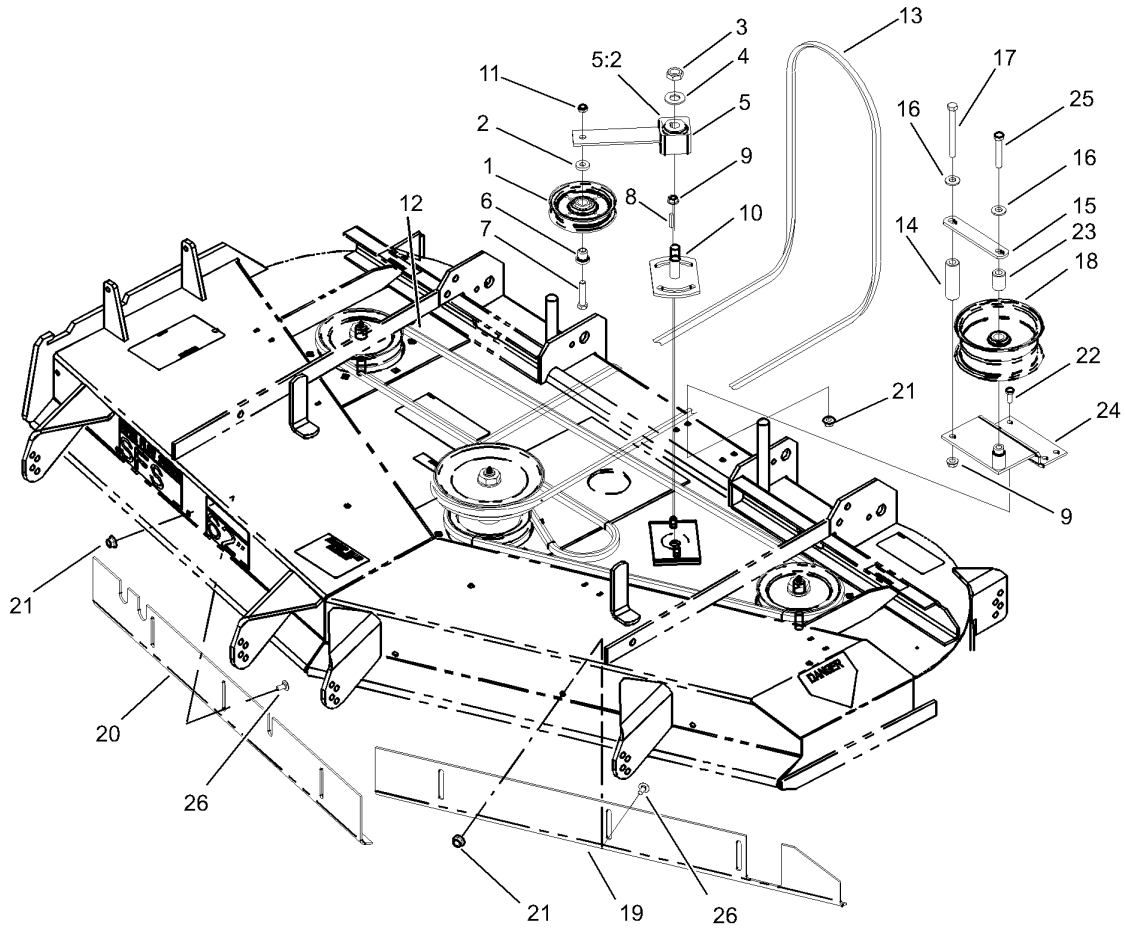
| | | | | | | |
|--|--|--|--|--|--|--|
| | | | | | | |
|--|--|--|--|--|--|--|



Deck Spindle Assembly

| Ref | Part No. | Qty. | Description |
|-------|----------|------|---------------------|
| 5 | 99-8933 | 1 | Guide-Belt |
| 9 | 323-8 | 1 | Screw-HH |
| 10 | 3256-3 | 1 | Washer-Flat |
| 11 | 32128-17 | 8 | Nut-Lock, Flange |
| 13 | 3290-321 | 8 | Screw-HWH |
| 14 | 249-21 | 4 | Clamp-Slotted |
| 18 | 44-6250 | 3 | Blade |
| 19 | 3256-24 | 1 | Washer-Flat |
| 20 | 32128-21 | 18 | Nut-HF |
| 21 | 99-4640 | 2 | Outer Spindle ASM |
| 21:1 | 27-0920 | 1 | Shaft |
| 21:2 | 302-2 | 1 | Fitting-Grease |
| 21:4 | 46-8530 | 1 | Bearing ASM |
| 21:5 | 27-0950 | 1 | Spacer |
| 21:6 | 253-139 | 2 | Seal-Oil |
| 21:7 | 61-4160 | 1 | Housing-Spindle |
| 21:8 | 99-4614 | 1 | Pulley And Hub ASM |
| 21:9 | 32146-20 | 1 | Nut-Jam |
| 21:10 | 7-4150 | 1 | Washer |
| 21:11 | 1-513435 | 1 | Washer-Spring |
| 21:12 | 92-5816 | 1 | Bolt-Blade |
| 22 | 105-1688 | 1 | Spindle Housing ASM |
| 22:1 | 302-2 | 1 | Fitting-Grease |
| 22:2 | 32146-20 | 1 | Nut-Jam |

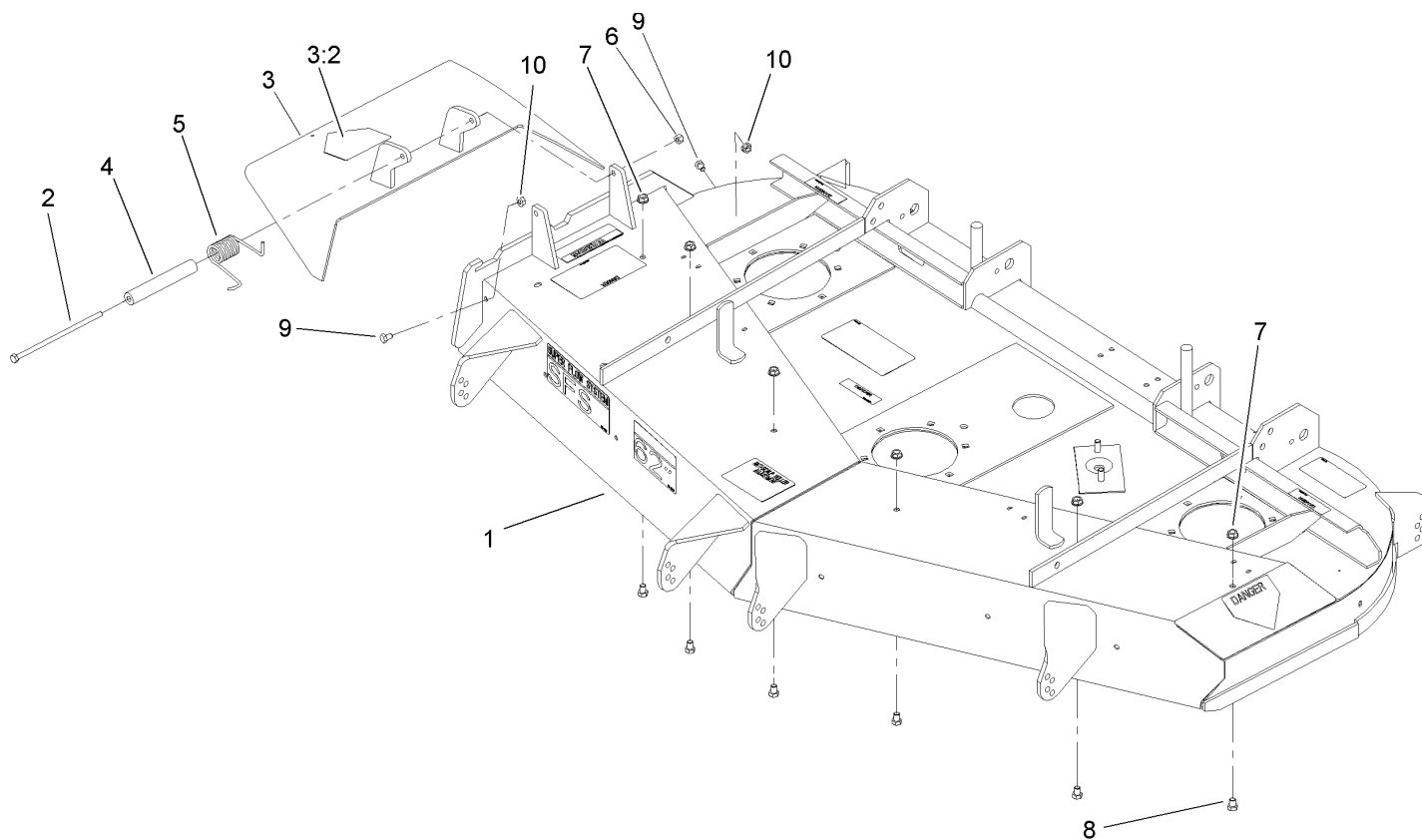
| Ref | Part No. | Qty. | Description |
|-------|----------|------|--------------------|
| 22:3 | 92-5836 | 1 | Washer |
| 22:4 | 99-4939 | 1 | Pulley And Hub ASM |
| 22:5 | 61-4160 | 1 | Housing-Spindle |
| 22:6 | 46-8530 | 1 | Bearing ASM |
| 22:7 | 253-139 | 2 | Seal-Oil |
| 22:8 | 27-0950 | 1 | Spacer |
| 22:9 | 105-1686 | 1 | Spindle Shaft ASM |
| 22:10 | 92-5816 | 1 | Bolt-Blade |
| 22:11 | 1-513435 | 1 | Washer-Spring |
| 23 | 3231-22 | 17 | Screw-CARR |
| 24 | 100-4307 | 1 | Pulley/hub ASM |



Belt and Idler Arm Assembly

| Ref | Part No. | Qty. | Description |
|-----|------------|------|--------------------|
| 1 | 65-5940 | 1 | Pulley-Idler |
| 2 | 7-0081 | 1 | Washer-Flat |
| 3 | 3296-71 | 1 | Nut-Lock NI |
| 4 | 3256-27 | 1 | Washer-Flat |
| 5 | 27-8580 | 1 | Idler Arm ASM |
| 5:2 | 27-8490 | 1 | Bushing-Rubber |
| 6 | 65-5950 | 1 | Bushing-Pulley |
| 7 | 3211-8 | 1 | Screw-HH |
| 8 | 5-1077 | 1 | Key-Square |
| 9 | 3290-357 | 3 | Nut-HHF |
| 10 | 44-6301 | 1 | Plate-Idler, LH |
| 11 | 3296-5 | 1 | Nut-Lock, NI |
| 12 | 44-6260 | 1 | V-Belt |
| 13 | 99-4647 | 1 | V-Belt-Drive, Deck |
| 14 | 99-4659 | 1 | Spacer-Bracket |
| 15 | 1-653189 | 1 | Plate |
| 16 | 98-5975 | 2 | Washer-Belleville |
| 17 | 323-42 | 1 | Screw-HH |
| 18 | 1-413099 | 1 | Pulley-Idler |
| 19 | 99-2833-03 | 1 | Baffle-Front, LH |
| 20 | 99-2834-03 | 1 | Baffle-Front, RH |
| 21 | 32128-20 | 10 | Nut-HF |
| 22 | 322-3 | 4 | Screw-HH |
| 23 | 1-653190 | 1 | Spacer |

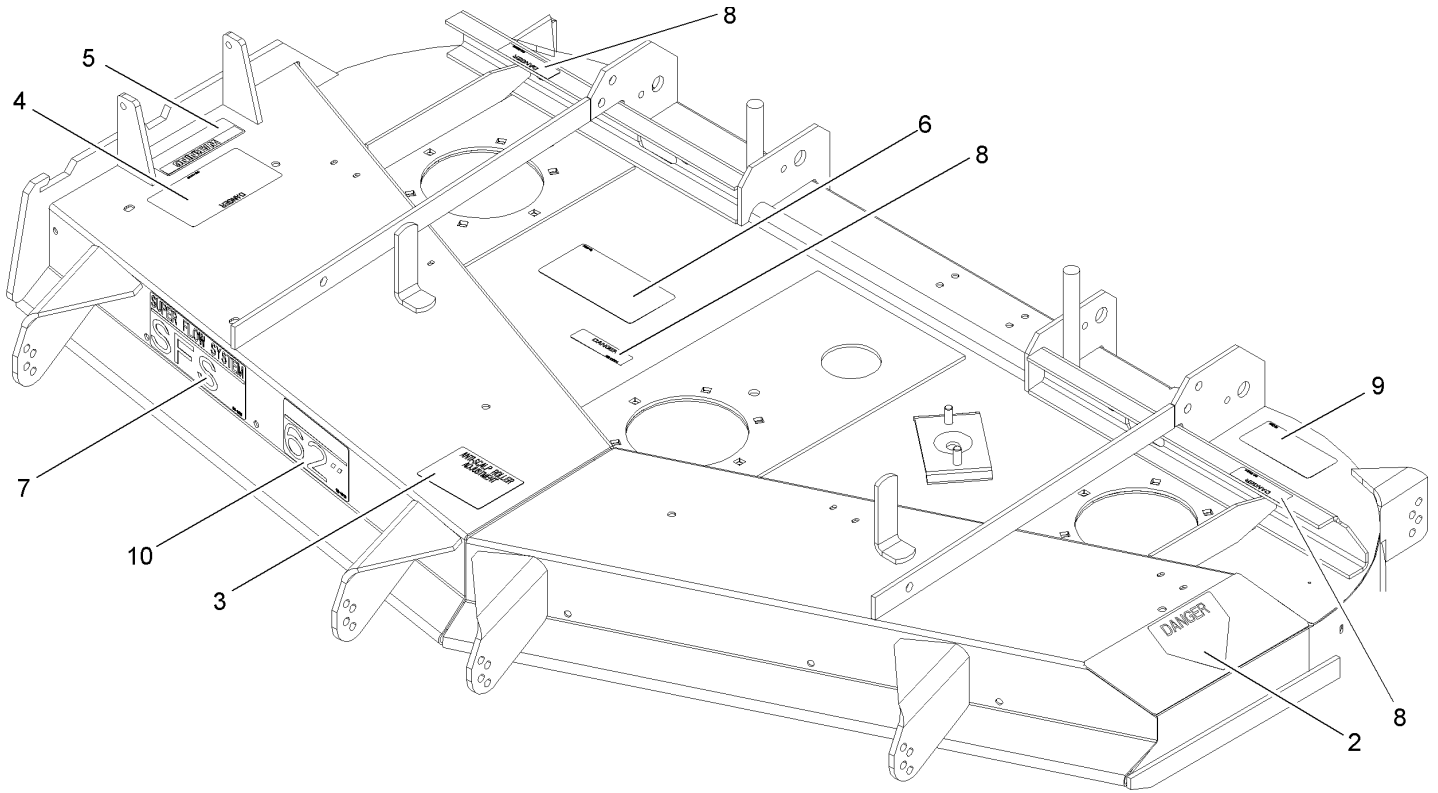
| Ref | Part No. | Qty. | Description |
|-----|------------|------|----------------|
| 24 | 99-4684-01 | 1 | Bracket-Pulley |
| 25 | 323-11 | 1 | Screw-HH |
| 26 | 3230-18 | 6 | Screw-CARR |



Deck and Deflector Assembly No. 106-5864

| Ref | Part No. | Qty. | Description |
|-----|----------|------|----------------|
| ❶ | | 1 | Deck ASM |
| 2 | 322-50 | 1 | Screw-HH |
| 3 | 105-3605 | 1 | Deflector ASM |
| 3:2 | 93-1122 | 1 | Decal-Danger |
| 4 | 105-4622 | 1 | Spacer |
| 5 | 104-8554 | 1 | Spring-Torsion |
| 6 | 3296-29 | 1 | Nut-Lock, NI |
| 7 | 3290-357 | 6 | Nut-HHF |
| 8 | 323-2 | 6 | Screw-HH |
| 9 | 322-1 | 2 | Screw-HH |
| 10 | 32128-20 | 2 | Nut-HF |

| | | | |
|--|--|--|--|
| | | | |
|--|--|--|--|



Deck Decal Assembly No. 106-5863

| Ref | Part No. | Qty. | Description |
|-----|----------|------|--------------------------|
| 2 | 43-8480 | 1 | Decal-Danger |
| 3 | 98-3798 | 1 | Decal-Wheel, Gage |
| 4 | 66-1340 | 1 | Decal-Danger |
| 5 | 104-8569 | 1 | Decal-Warning |
| 6 | 99-4686 | 1 | Decal-Routing, Belt |
| 7 | 99-4619 | 1 | Decal-Sfs |
| 8 | 98-5954 | 3 | Decal-Missing, Cover |
| 9 | 93-7818 | 1 | Decal-Torque, Blade Bolt |
| 10 | 99-4620 | 1 | Decal-Deck |

