



62" Mower Service Kit 72" Mower Service Kit 200 Series Z Master

Part No. 105-6176—Serial No. 220000001 and Up

Part No. 105-6177—Serial No. 220000001 and Up

Installation Instructions

Loose Parts

Note: Use the chart below to identify parts for assembly.

DESCRIPTION	QTY.	USE
Pulley	1	Changing the center pulleys
PTO drive belt	1	

Install the extra pulley **only** on electronic fuel injected (EFI) and liquid cooled models.

If you have an EFI or liquid cooled Z Master model you will need to install the extra pulley included in this kit.

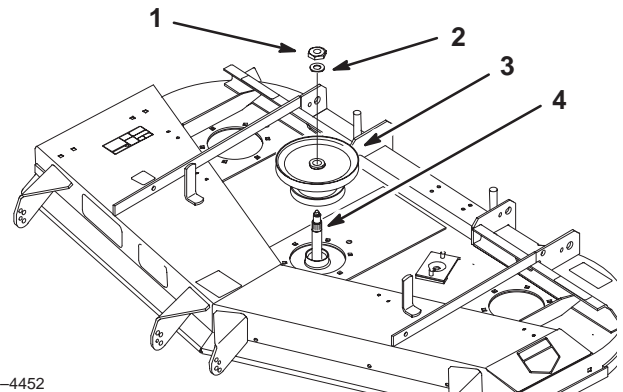
Changing the Center Pulleys

Note: Clean area around pulley before removing pulley assembly. Hold spindle up from underneath the mower. It can fall when the nut and washer are removed.

1. Remove the deck belt from the new deck. Refer to the operators manual for instructions on removing the deck belt.
2. Remove nut and washer on top of center spindle (Fig. 1). Save the nut and washer.
3. Remove existing pulley assembly (Fig. 1).
4. Install new pulley assembly. Install it so the large pulley is on top (Fig. 1).
5. Reinstall washer and nut (Fig. 1).

Important Nut must be torqued to 115 ft-lbs.

6. Grease all three spindles to fill bearings with grease.
7. Install the deck belt onto the new deck. Refer to the operators manual for instructions.
8. Install the PTO drive belt onto the machine. Refer to the operators manual for instructions.



M-4452

Figure 1

- | | |
|-----------|--------------------|
| 1. Nut | 3. Pulley Assembly |
| 2. Washer | 4. Spindle |