



EU Road Light Kit

Groundsmaster® 3200 or 3300 Series Traction Unit

Model No. 31992

Installation Instructions

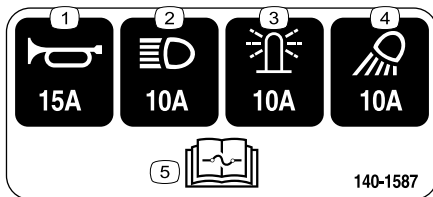
If you are installing this kit on a ROPS-only traction unit (i.e., the traction unit does not have a cab), you must also install the Power Harness Kit (Part No. 140-1559).

Safety

Safety and Instructional Decals



Safety decals and instructions are easily visible to the operator and are located near any area of potential danger. Replace any decal that is damaged or missing.



140-1587

decal140-1587

- | | |
|--------------------|--|
| 1. Horn—15 A | 4. Work lights—10 A |
| 2. Headlights—10 A | 5. Read the <i>Operator's Manual</i> for fuse information. |
| 3. Beacon—10 A | |

Installation

1

Preparing the Machine

No Parts Required

Procedure

1. Park the machine on a level surface.
2. Engage the parking brake.
3. Lower the cutting unit.
4. Shut off the engine and remove the key.
5. Disconnect the battery; refer to the electrical system maintenance section of your *Operator's Manual*.



2

Installing the Clips, Speed Nuts, and Fuse Block

Parts needed for this procedure:

1	Switch mount
6	Clip (1/4 inch)
2	Speed nut
1	Fuse mount plate
4	U-type speed nut
1	Fuse block
2	Screw (#10 x 3/4 inch)

Procedure

1. Install the 6 clips and 2 speed nuts to the switch mount (Figure 1).

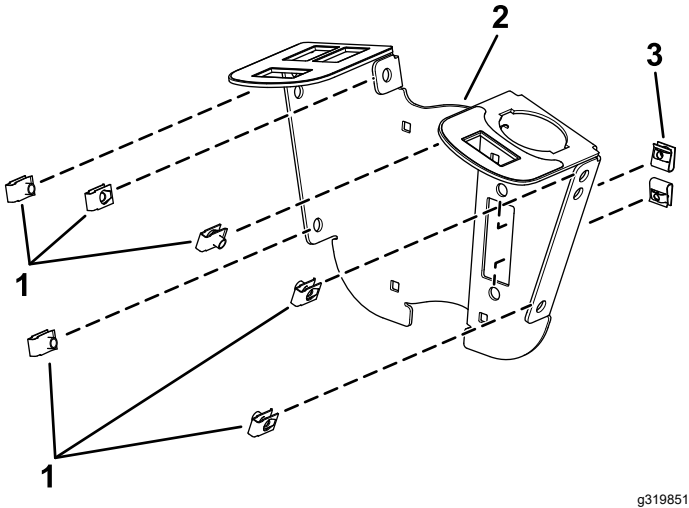
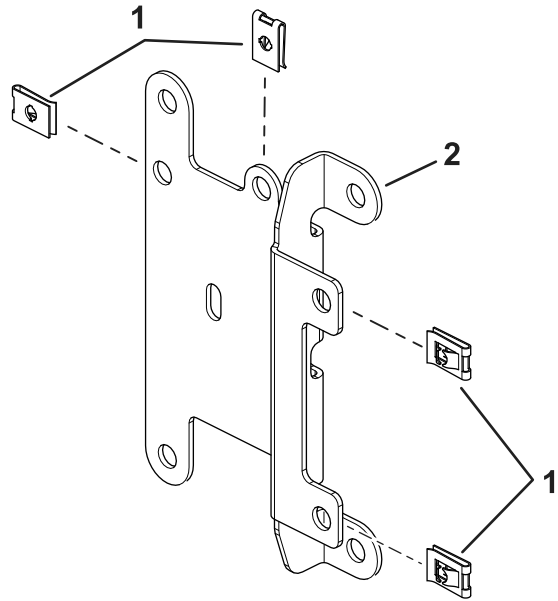


Figure 1

g319851

1. Clip
2. Switch mount
3. Speed nut

2. Install the U-type speed nuts to the fuse-mount plate (Figure 2).

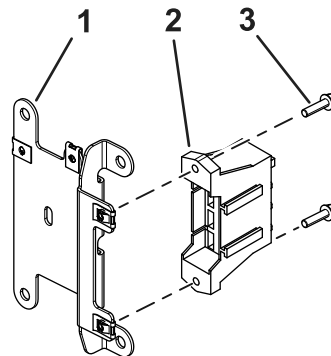


g304335

Figure 2

1. U-type speed nuts
2. Fuse-mount plate

3. Install the fuse block on the wire harness to the fuse-mount plate using 2 screws (#10 x 3/4 inch) as shown in Figure 3.



g304300

Figure 3

1. Fuse-mount plate
2. Fuse block
3. Screw (#10 x 3/4 inch)

3

Installing the Switch Mount

Parts needed for this procedure:

2	Mount bracket
4	Carriage bolt (1/4 x 2 inches)
2	Locknut (1/4 inch)
2	Hex-head screw (1/4 x 3/4 inch)
2	Flange nut (1/4 inch)
1	Flasher
1	Relay
1	Wire harness
2	Cable tie
1	Fuse cover
2	Thumb screw
2	Push nut
1	Decal
2	Screw (#10 x 3/8 inch)
1	Multi-function switch
3	Hole plug
1	Rocker switch
1	Control cover
6	Hex-head screw (1/4 x 3/4 inch)
2	Switch clip
2	Push rivet

Procedure

- Loosely install the switch mount around the steering column using 4 carriage bolts (1/4 x 2 inches), 2 mounting brackets, fuse-mount plate, and 4 locknuts (1/4 inch) as shown in [Figure 4](#).

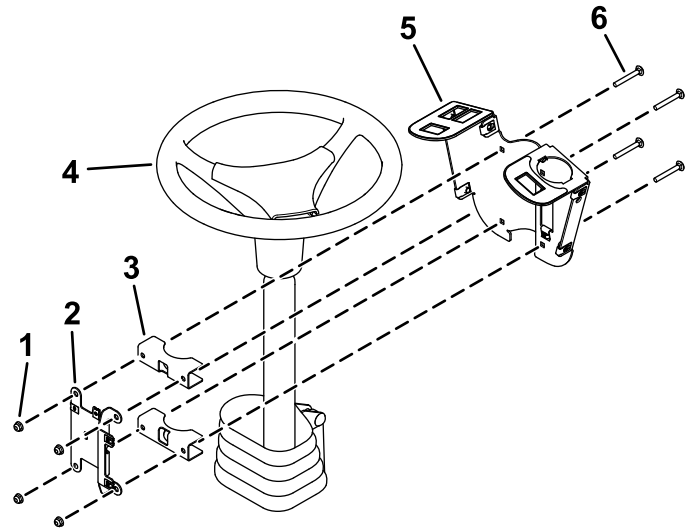


Figure 4

- | | |
|------------------------|-----------------------------------|
| 1. Locknuts (1/4 inch) | 4. Steering column |
| 2. Fuse-mount plate | 5. Switch mount |
| 3. Mounting brackets | 6. Carriage bolt (1/4 x 2 inches) |

g319856

2. Install the multi-function switch to the switch mount and secure it using the switch clips under the hole for the switch ([Figure 5](#)).

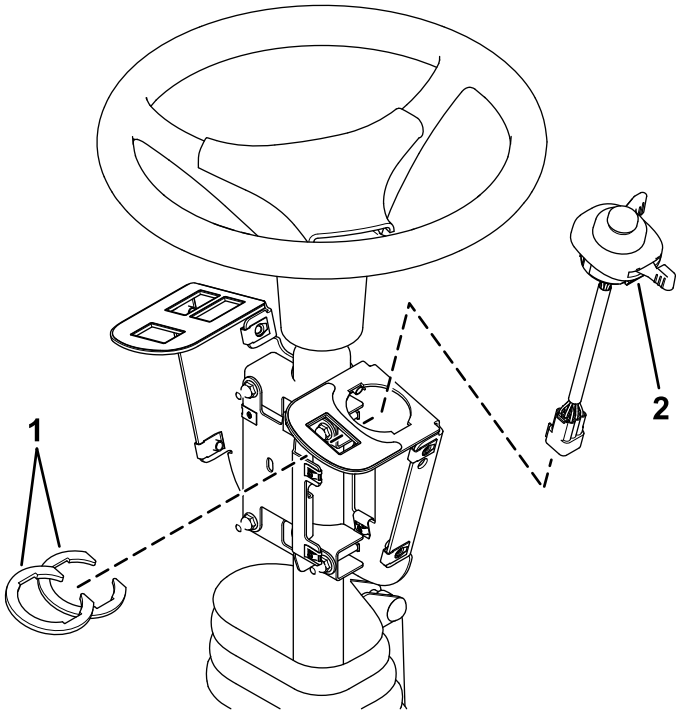


Figure 5

g319854

1. Switch clips
2. Multi-function switch

3. Install the rocker switch and hole plugs into the switch mount ([Figure 6](#)).

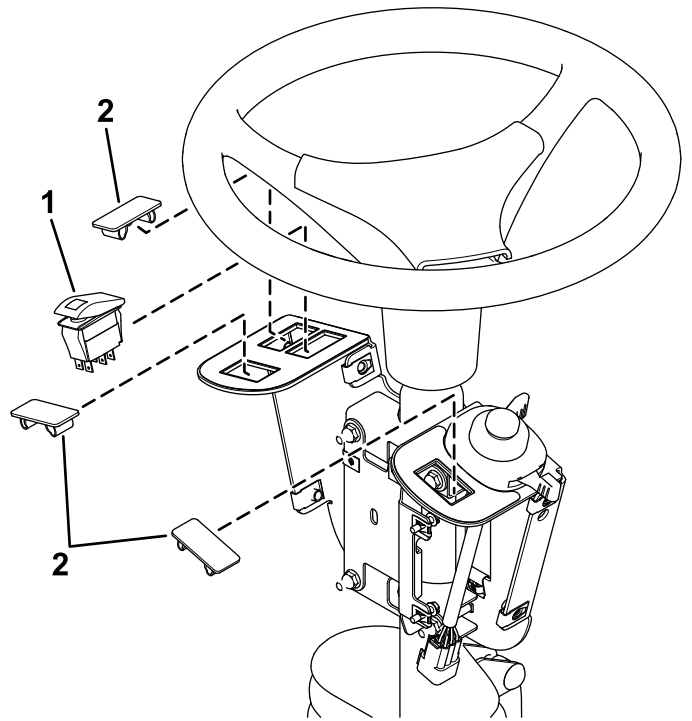


Figure 6

g319855

1. Rocker switch
2. Hole plug

4. Install the flasher and relay to the fuse-mount plate using 2 screws (#10 x 3/8 inch) as shown in [Figure 7](#).

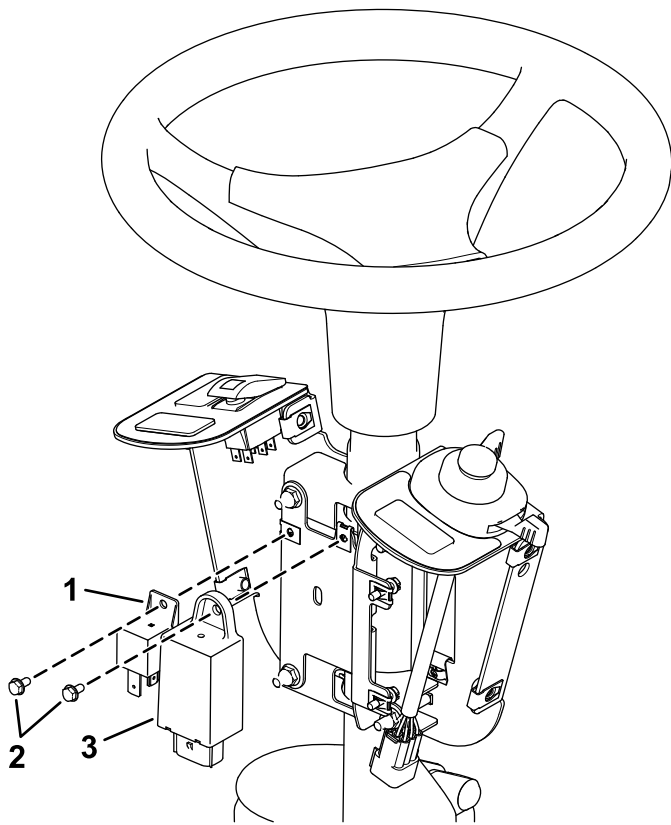


Figure 7

- 1. Relay
- 2. Screw (#10 x 3/8 inch)
- 3. Flasher

g319853

- 5. Secure the flasher using a cable tie (Figure 8).
- 6. Plug the harness into the rocker switch and multi-function switch (Figure 8).

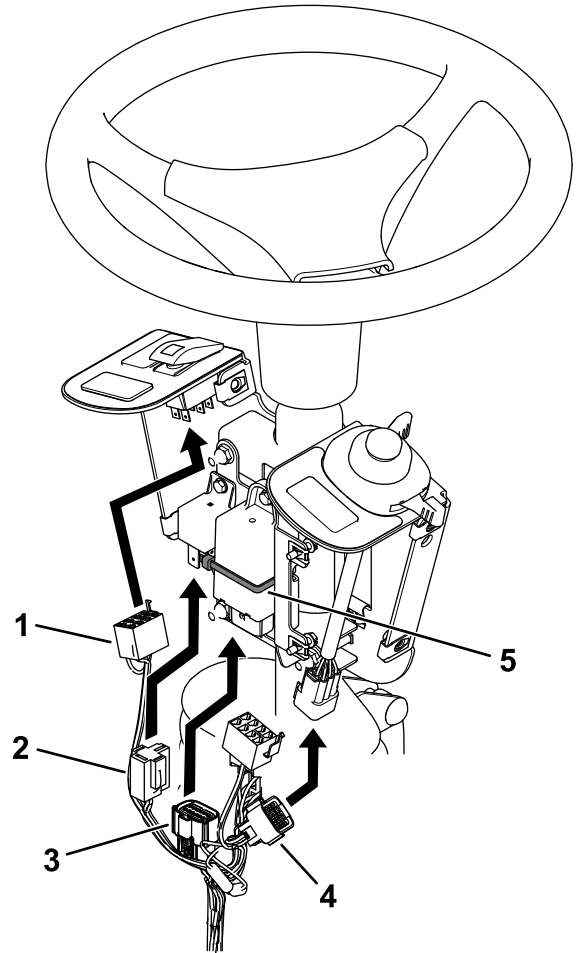


Figure 8

- 1. Rocker switch connector
- 2. Relay connector
- 3. Flasher connector
- 4. Switch connector
- 5. Cable tie

g319850

- 7. Plug the wire harness into the relay and flasher (Figure 8).
- 8. Loosen the bolts around the steering-column base (Figure 9).

- Raise the base up and drill a 22 mm (7/8 inch) hole as shown in [Figure 9](#).

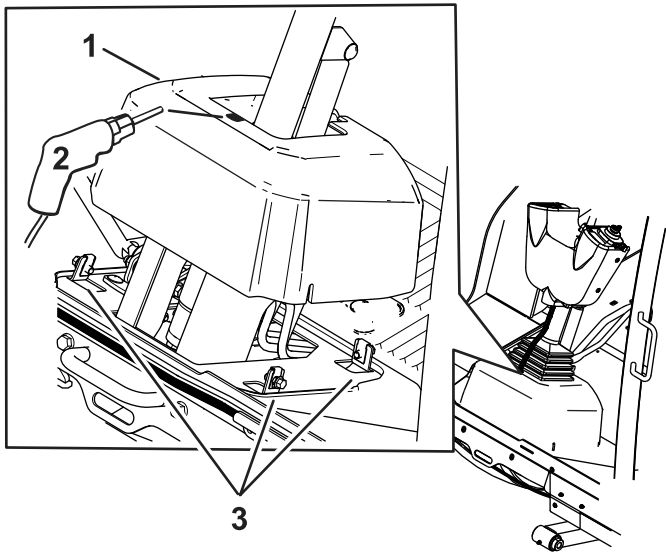


Figure 9

g304296

- Steering-column base

- Apply the decal to the fuse cover as shown in [Figure 11](#).

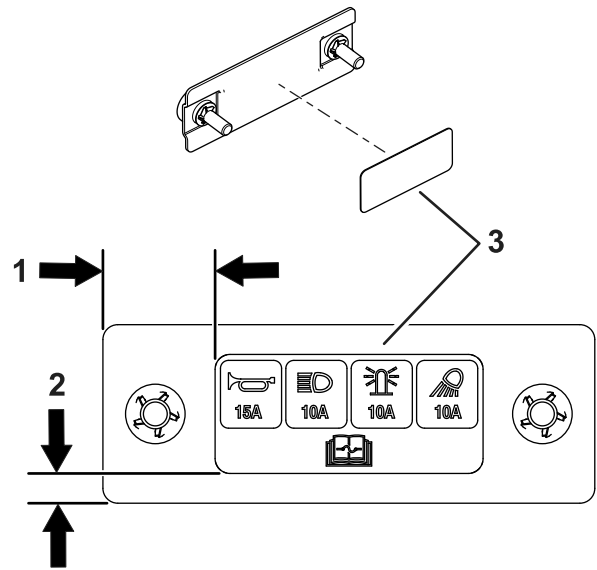


Figure 11

g304374

- 25 mm (1 inch)
- 6 mm (1/4 inch)
- Decal—inside of fuse cover

- Route the harness through the hole you drilled in the base.

- Leave the bullet connectors disconnected as shown in [Figure 10](#).

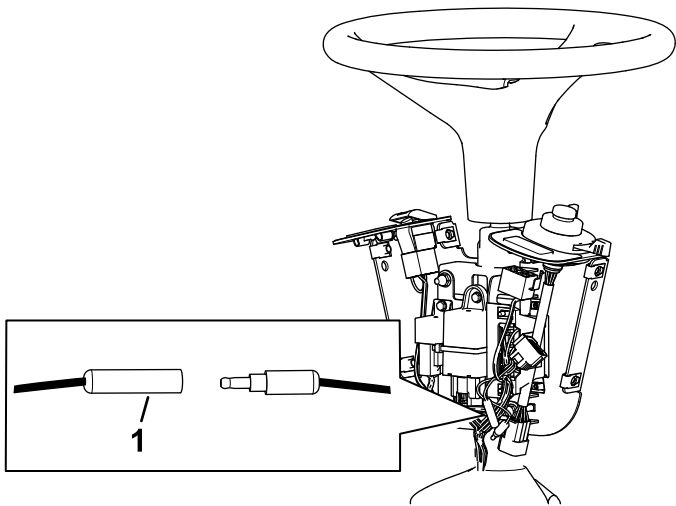


Figure 10

g333871

- Leave the bullet connectors disconnected.

- Install the fuse cover to the switch mount using 2 thumb screws and 2 push nuts ([Figure 12](#)).

Note: Ensure that the push nuts are installed on the inside of the fuse cover ([Figure 12](#)).

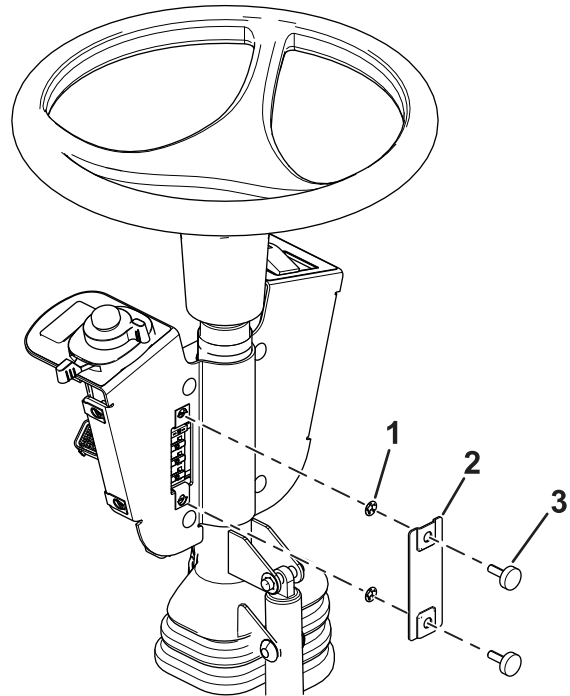


Figure 12

g304295

- Push nut
- Fuse cover
- Thumb screw

14. Adjust the control assembly so that the switches are accessible.
15. Tighten all the fasteners.
16. Install the control cover to the switch mount using 2 push rivets and 6 hex-head screws (1/4 x 3/4 inch) as shown in [Figure 13](#).

4

Installing the Front Components

Parts needed for this procedure:

1	Left light base (for machines with a cab)
1	Right light base (for machines with a cab)
1	Left light mount
1	Right light mount
1	Left light assembly
1	Right light assembly
6	Button-head bolt (1/4 x 5/8 inch)
4	Carriage bolt (3/8 x 3/4 inch)—for machines with a cab
4	Locknut (3/8 inch)—for machines with a cab
1	Light cross mount (for machines without a cab)

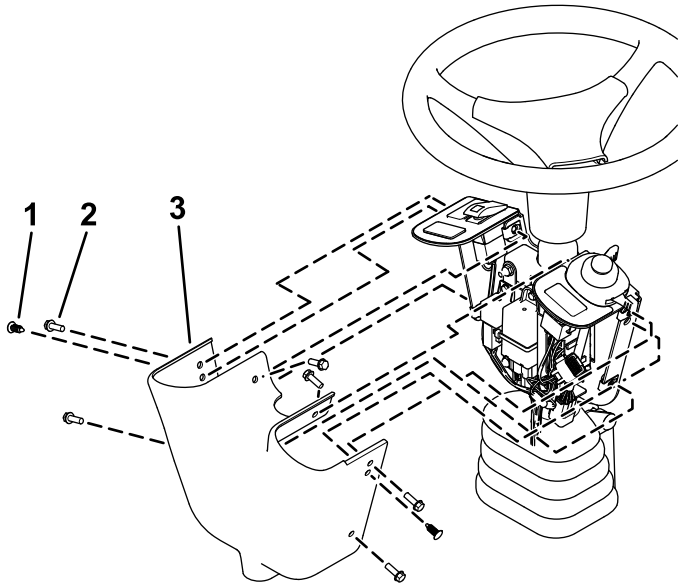


Figure 13

g319852

1. Push rivet
2. Hex-head screw
3. Control cover

For Machines with a Cab

When installing the light mounts, refer to the following chart for the mounting position based on your mower deck size and type.

Light Position Table

Cutting Unit Model Number	Front Lights	Rear, Left Light	Rear, Right Light
31970	Narrow	Narrow	Wide
31971	Narrow	Narrow	Narrow
31972	Wide	Narrow	Wide
31973	Narrow	Narrow	Narrow
31974	Narrow	Narrow	Narrow
31975	Narrow	Narrow	Narrow

1. Secure the left light base and right light base to the cab frame using 2 carriage bolts (3/8 x 3/4 inch) and 2 locknuts (3/8 inch) on each side (Figure 14).

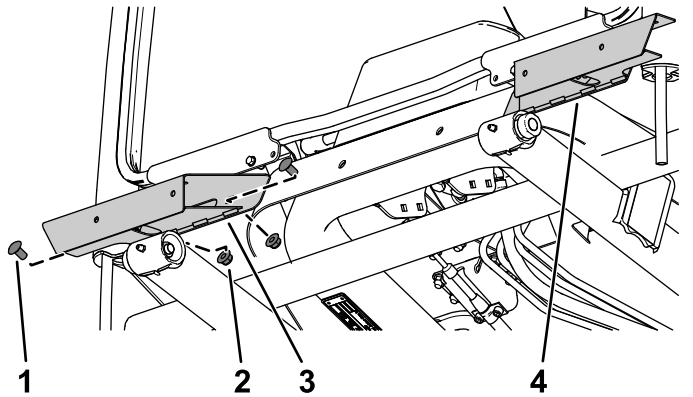


Figure 14

- | | |
|-----------------------------------|---------------------|
| 1. Carriage bolt (3/8 x 3/4 inch) | 3. Right light base |
| 2. Locknut (3/8 inch) | 4. Left light base |

2. Secure the left light mount and right light mount to the light bases using 3 button-head bolts (1/4 x 5/8 inch) through the speed nuts on each side (Figure 15).

Note: Refer to the [Light Position Table \(page 7\)](#) for the appropriate position of the lights.

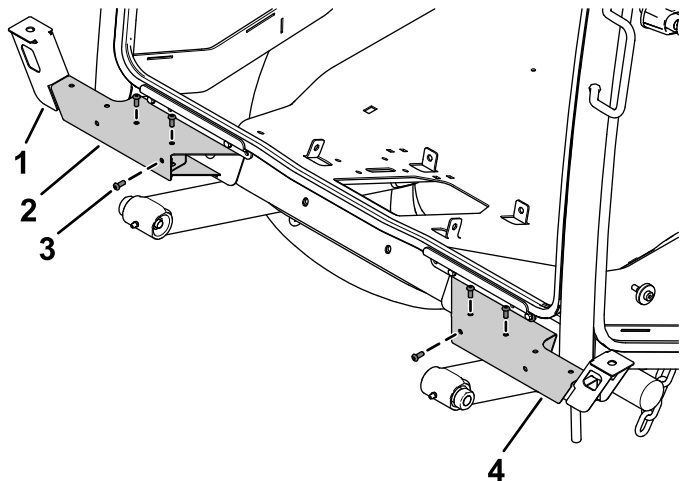


Figure 15

- | | |
|----------------------|--------------------------------------|
| 1. Light base | 3. Button-head bolt (1/4 x 5/8 inch) |
| 2. Right light mount | 4. Left light mount |

3. Secure the left light assembly and right light assembly to the left light mount and right light mount using the hex nut on the light assemblies (Figure 16).

Note: Install the lights with the low beam toward the outer edge of the machine.

Look at the bottom of the lights for high beam and low beam orientation.

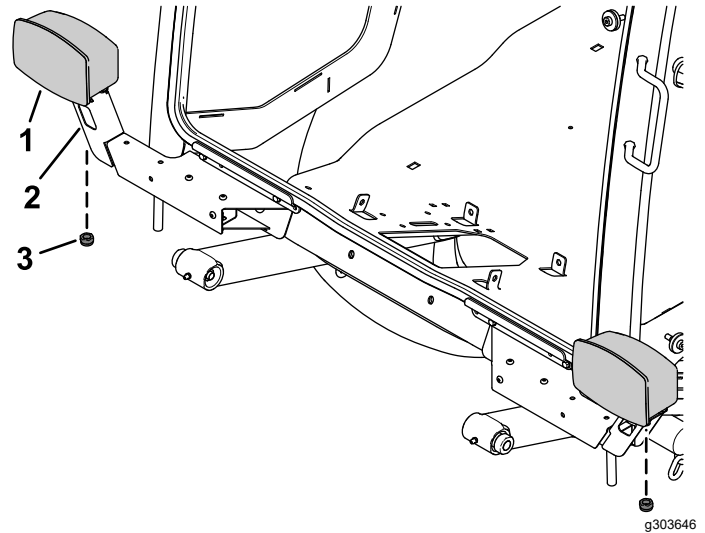


Figure 16

- | | |
|-------------------|------------|
| 1. Light assembly | 3. Hex nut |
| 2. Light mount | |

For Machines without a Cab

1. Remove the tie-down bracket from the platform (Figure 17).

Retain the parts.

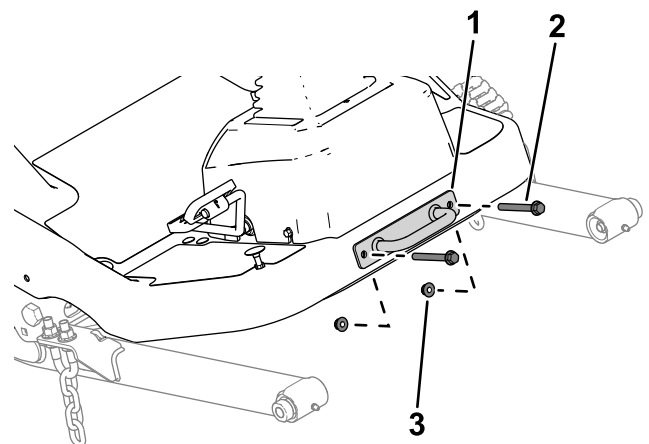


Figure 17

- | | |
|---------------------|--------|
| 1. Tie-down bracket | 3. Nut |
| 2. Bolt | |

- Secure the light cross mount to the platform using the previously removed bolts, nuts, and tie-down bracket (Figure 18).

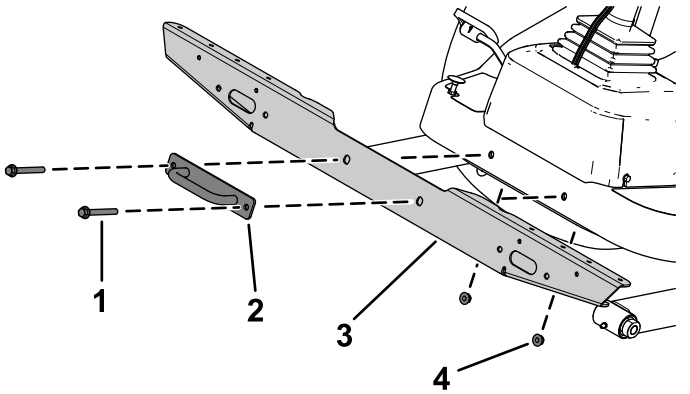


Figure 18

- | | |
|---------------------|----------------------|
| 1. Bolt | 3. Light cross mount |
| 2. Tie-down bracket | 4. Nut |

- Secure the left light mount and right light mount to the light cross mount using 3 button-head bolts (1/4 x 5/8 inch) through the speed nuts on each side (Figure 19).

Note: Refer to the [Light Position Table \(page 7\)](#) for the appropriate position of the lights.

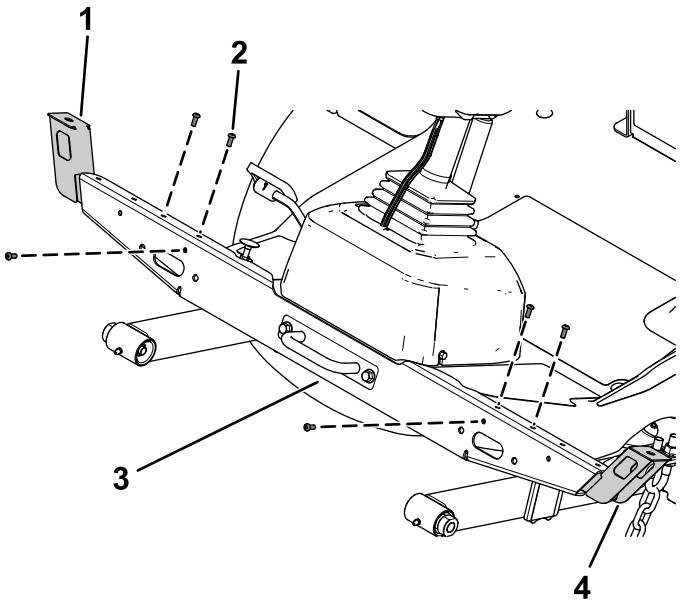


Figure 19

- | | |
|--------------------------------------|----------------------|
| 1. Right light mount | 3. Light cross mount |
| 2. Button-head bolt (1/4 x 5/8 inch) | 4. Left light mount |

- Secure the left light assembly and right light assembly to the left light mount and right light mount using the lock washer and hex nut on the light assemblies (Figure 20).

Note: Install the lights with the low beam toward the outer edge of the machine.

Look at the bottom of the lights for high beam and low beam orientation.

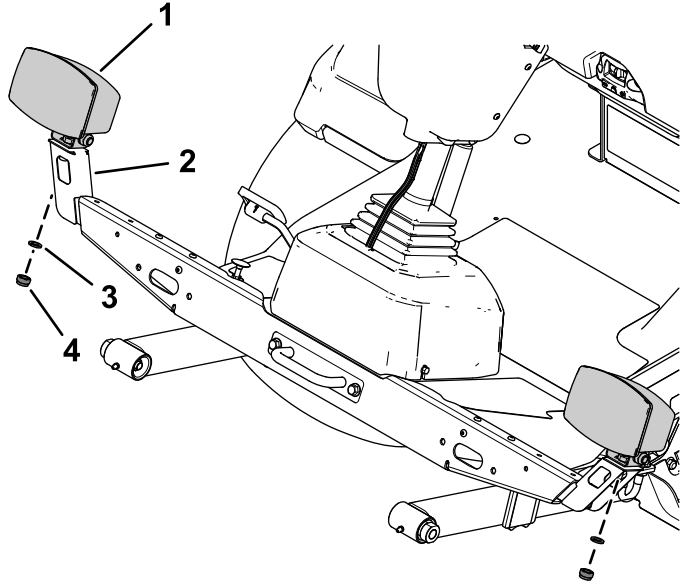


Figure 20

- | | |
|-------------------|----------------|
| 1. Light assembly | 3. Lock washer |
| 2. Light mount | 4. Hex nut |

5

Installing the Rear Components

Parts needed for this procedure:

1	Left mount
1	Right mount
1	Left short mount
1	Right short mount
4	Carriage bolt (5/16 x 3/4 inch)
4	Flange nut (5/16 inch)
4	Carriage bolt (1/4 x 5/8 inch)
8	Locknut (1/4 inch)
2	Inner mount assembly
2	Taillight
4	Pan-head screw (#10 x 1-1/4 inches)
4	Flange nut (#10)
4	Hex-head bolt (3/8 x 3 inches)
4	Locknut (3/8 inch)
1	Marker mount
2	Back mount
4	Flange-head bolt (1/4 x 3/4 inch)
1	Speed-plate mount
2	Speed nut
5	Carriage bolt (1/4 x 1/2 inch)
5	Locknut (1/4 inch)
1	Horn-mounting bracket
1	Horn
3	20 kph speed decal
3	24 kph speed decal
1	Right, long mount
1	Left light housing
1	Right light housing

Procedure

1. Remove the flange-head bolt (3/8 x 2-3/4 inches) and flange nut (3/8 inch) securing the bumper to the rear tube frame on each side of the bumper (Figure 21).

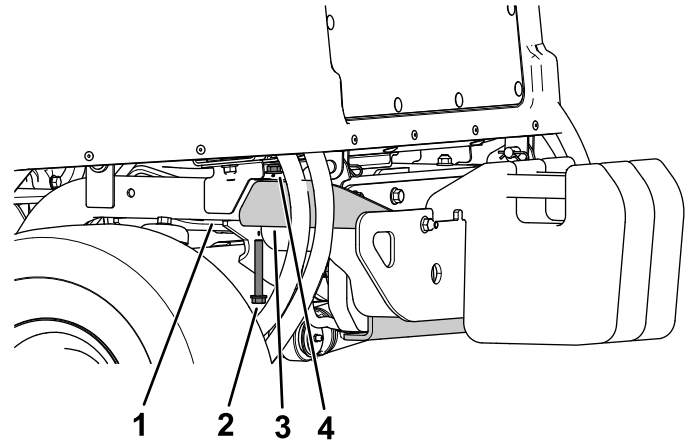


Figure 21

1. Rear tube frame
2. Flange-head bolt (3/8 x 2-3/4 inches)
3. Bumper
4. Flange nut (3/8 inch)

2. Secure the left mount and right mount to rear frame tubes using 2 hex-head bolts (3/8 x 3 inches) and 2 locknuts (3/8 inch) on each side (Figure 22).

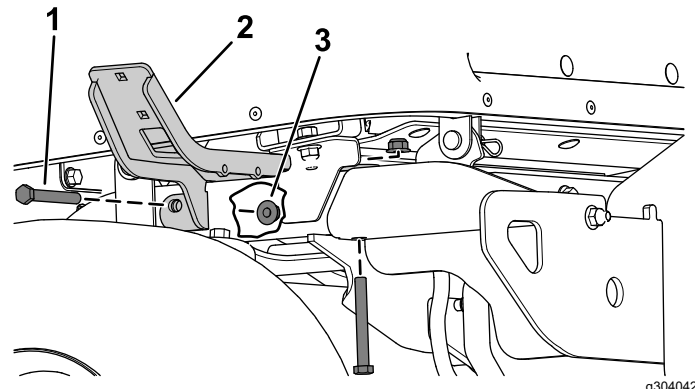


Figure 22

1. Hex-head bolt (3/8 x 3 inches)
2. Left mount
3. Locknut (3/8 inch)

- Secure the left short mount and right short or long mount to the left mount and right mount using 4 carriage bolts (5/16 x 3/4 inch) and 4 flange nuts (5/16 inch) as shown in [Figure 23](#).

Note: Refer to the [Light Position Table \(page 7\)](#) for the appropriate position of the lights.

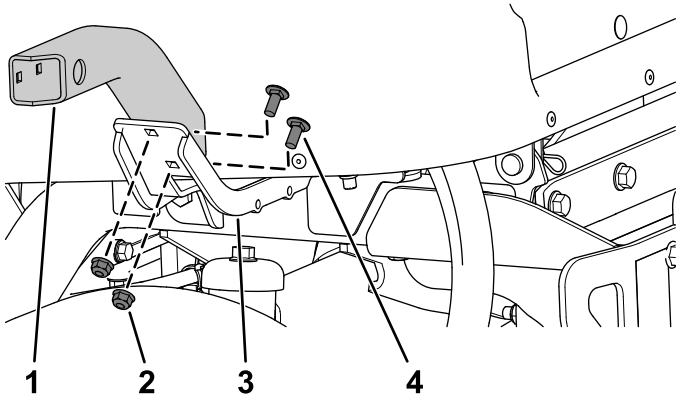


Figure 23

g304044

- | | |
|---------------------------|------------------------------------|
| 1. Left short mount | 3. Left mount |
| 2. Flange nut (5/16 inch) | 4. Carriage bolt (5/16 x 3/4 inch) |

- Secure the left light housing and right light housing to the left short mount and right short mount using 4 carriage bolts (1/4 x 5/8 inch) and 4 locknuts (1/4 inch) as shown in [Figure 24](#).

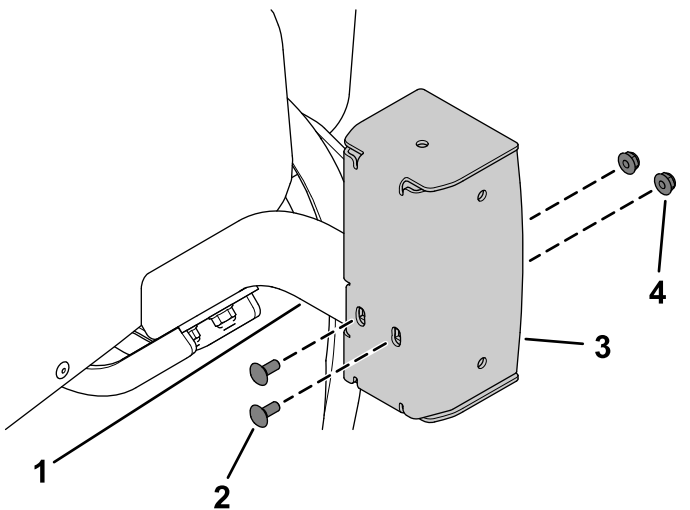


Figure 24

g319940

- | | |
|-----------------------------------|-----------------------|
| 1. Left short mount | 3. Left light housing |
| 2. Carriage bolt (1/4 x 5/8 inch) | 4. Locknut (1/4 inch) |

- Apply the appropriate speed decal to the speed-plate mount ([Figure 25](#)).

Apply the 20 kph decal for models 31900 and 31901.

Apply the 24 kph decal for models 31902 and 31903.

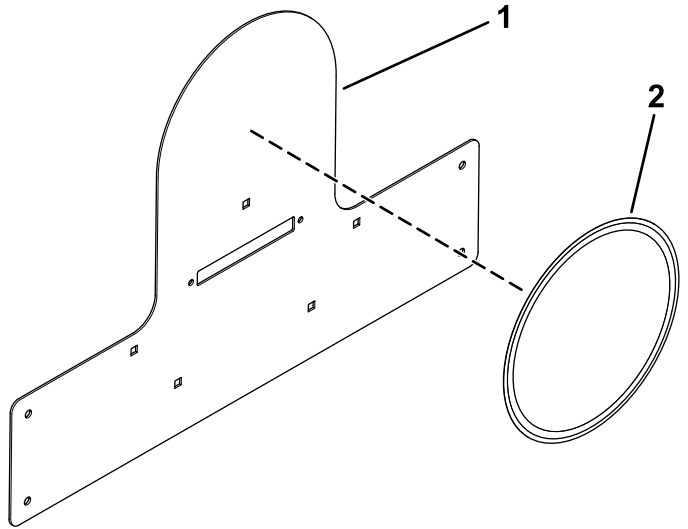


Figure 25

g304252

- | | |
|----------------------|----------------|
| 1. Speed-plate mount | 2. Speed decal |
|----------------------|----------------|

- Install the 2 speed nuts to the speed-plate mount ([Figure 26](#)).

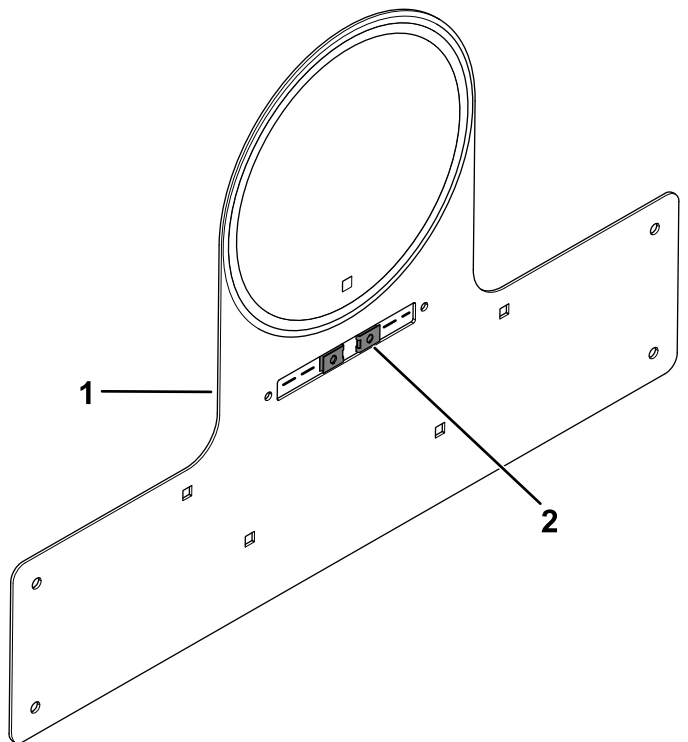


Figure 26

g304256

- | | |
|----------------------|--------------|
| 1. Speed-plate mount | 2. Speed nut |
|----------------------|--------------|

7. Secure the speed-plate mount to the marker mount using 5 carriage bolts (1/4 x 1/2 inch) and 5 locknuts (1/4 inch) as shown in [Figure 27](#).

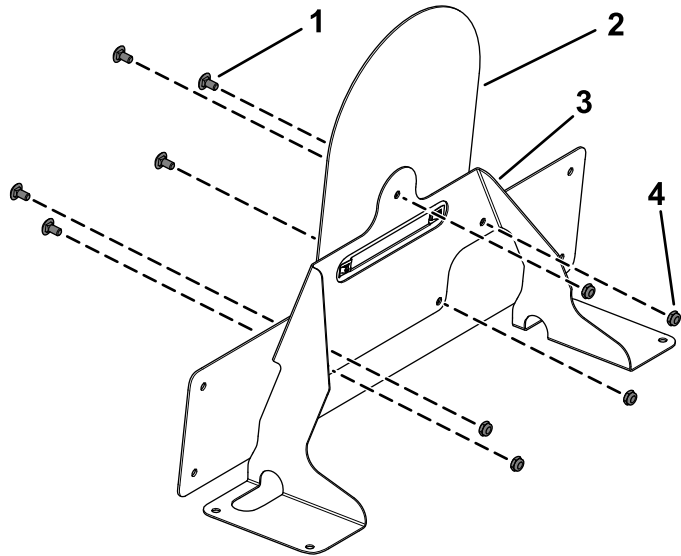


Figure 27

g304257

- | | |
|-----------------------------------|-----------------------|
| 1. Carriage bolt (1/4 x 1/2 inch) | 3. Marker mount |
| 2. Speed-plate mount | 4. Locknut (1/4 inch) |

8. Remove the 7 plastic plugs shown in [Figure 28](#) from the hood.

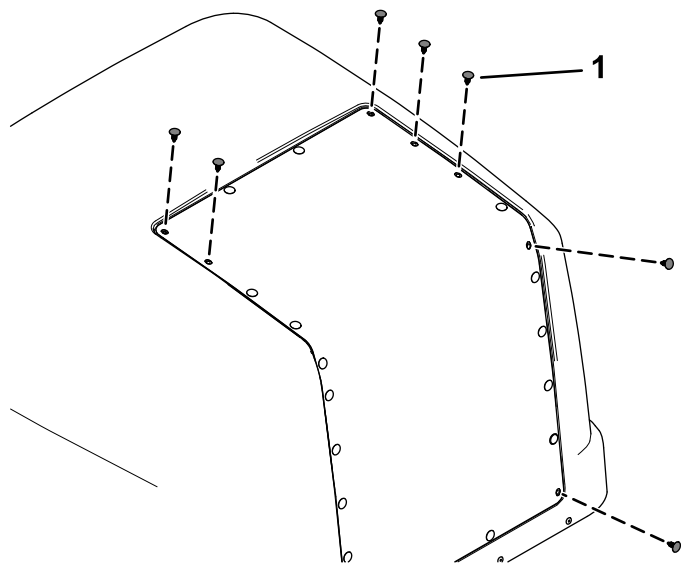


Figure 28

g304259

1. Plastic plug

9. Raise the hood ([Figure 29](#)).

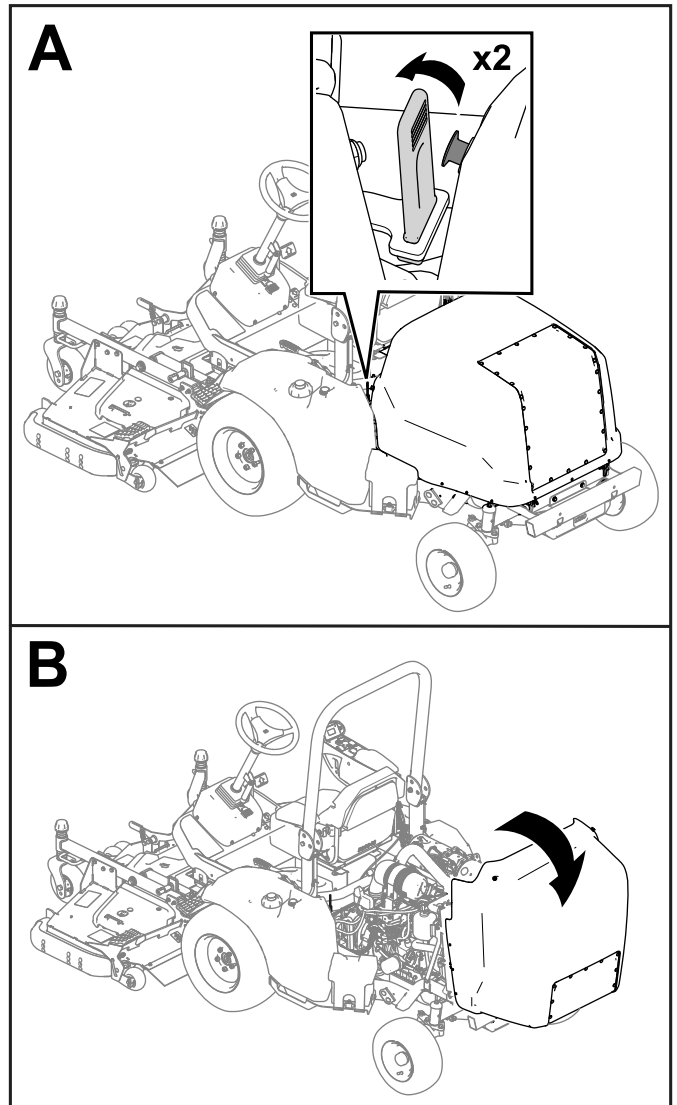


Figure 29

g285428

10. Secure the assembled speed-plate mount to the hood using 4 flange-head bolts (1/4 x 3/4 inch), 2 back mounts, and 4 locknuts (1/4 inch) as shown in [Figure 30](#).

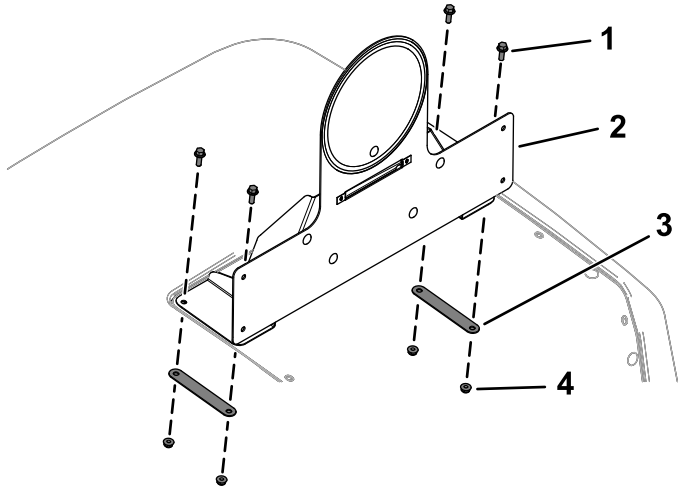


Figure 30

g304254

- | | |
|--------------------------------------|-----------------------|
| 1. Flange-head bolt (1/4 x 3/4 inch) | 3. Back mount |
| 2. Assembled speed-plate mount | 4. Locknut (1/4 inch) |

11. Drill a hole (1/2 inch) through the hood screen for routing the wire harness ([Figure 31](#)).

Important: Ensure that you do not drill through any engine components, specifically the Diesel Particulate Filter (DPF).

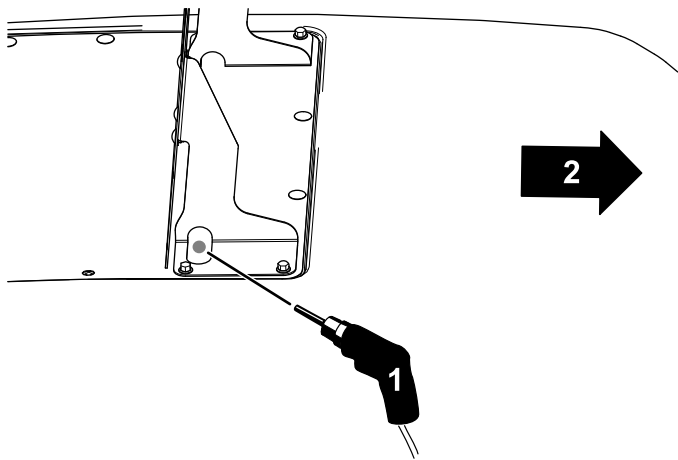


Figure 31

g304253

1. Drill the 1/2-inch hole here. 2. Front of the machine.

12. Remove the bolt and nut from the hydraulic-line mount ([Figure 32](#)).

Retain the fasteners.

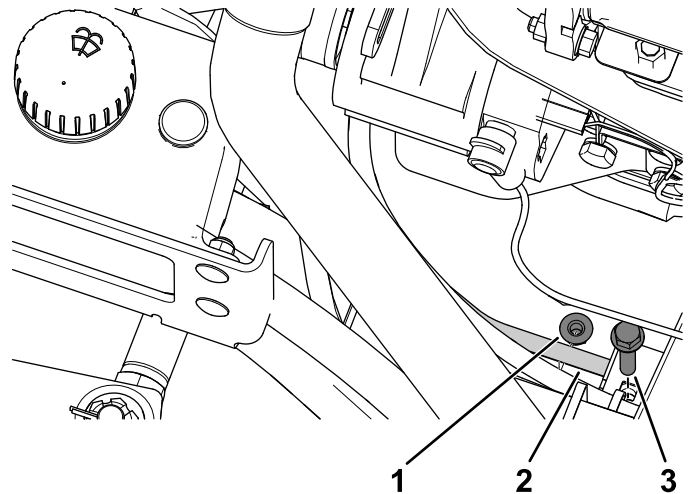


Figure 32

g304258

- | | |
|-------------------------|---------|
| 1. Nut | 3. Bolt |
| 2. Hydraulic-line mount | |

13. Secure the horn to the horn-mounting bracket using the previously removed bolt and nut ([Figure 33](#)).

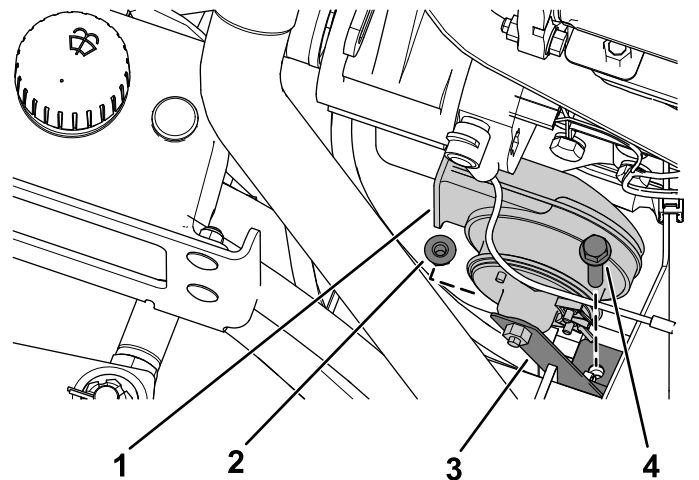


Figure 33

g304255

- | | |
|---------|--------------------------|
| 1. Horn | 3. Horn-mounting bracket |
| 2. Nut | 4. Bolt |

14. Apply the appropriate speed decal to each side of the hood ([Figure 34](#)).

Apply the 20 kph decals for models 31900 and 31901.

Apply the 24 kph decals for models 31902 and 31903.

6

Routing the Light Wire Harness

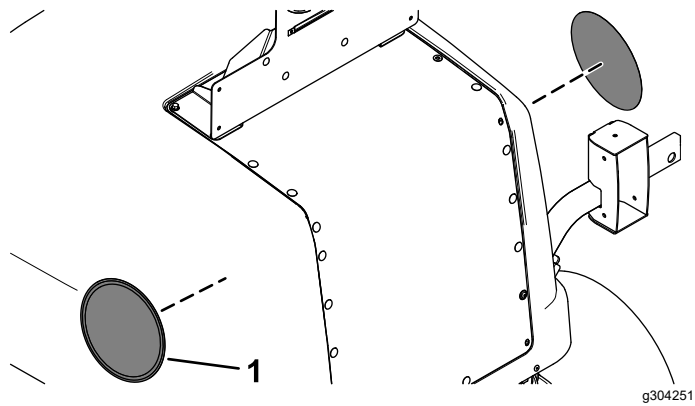


Figure 34

1. Speed decal

Parts needed for this procedure:

1	Light wire harness
3	Flat washer
3	Hex-socket screw (1/4 x 1 inch)
3	Clamp
3	Flange nut (1/4 inch)
2	Inner mount assembly
2	Taillight
4	Pan-head screw (#10 x 1-1/4 inches)
4	Flange nut (#10)
8	Button-head bolt (1/4 x 3/4 inch)
1	Plate light
2	Button-head bolt (#10 x 3/4 inch)

Procedure

Refer to the following figures and instructions for routing the light wire harness.

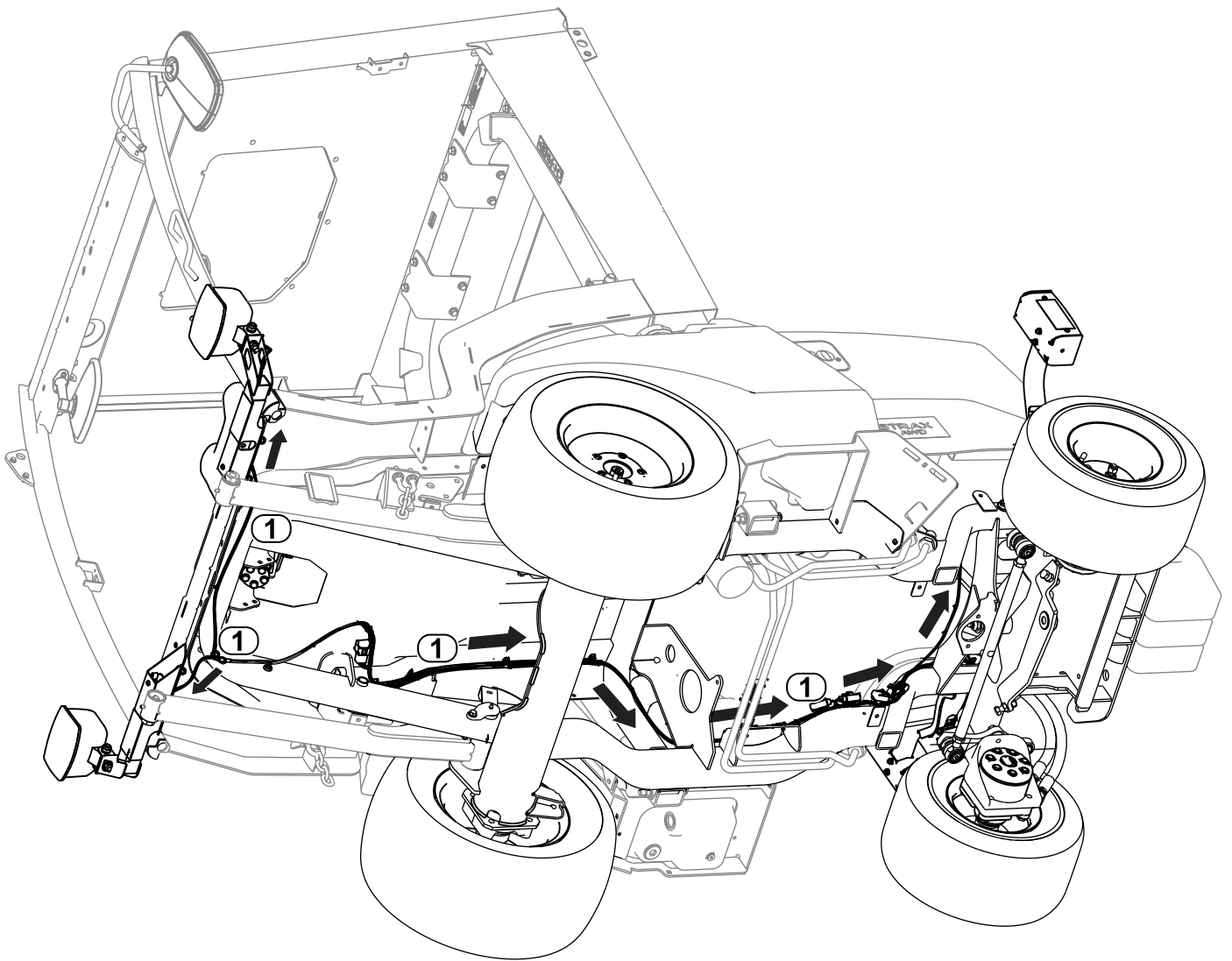


Figure 35

g304235

1. Wire-harness routing

1. Route the wire-harness connector labeled FRONT LIGHT LH (P04) to the left side of unit. Connect harness to light (Figure 35).
2. Route the wire-harness connector labeled FRONT LIGHT RH (P05) to the right side of unit. Connect harness to light (Figure 35).
3. Route the wire-harness connector labeled REAR LIGHT LH (P01) to the rear left side of unit (Figure 35).
4. Route the wire-harness connector labeled REAR LIGHT RH (P02) to the rear right side of unit (Figure 35).

- Secure the taillights to the inner mount assemblies using 4 pan-head screws (#10 x 1-1/4 inches) and 4 flange nuts (#10) as shown in [Figure 36](#).

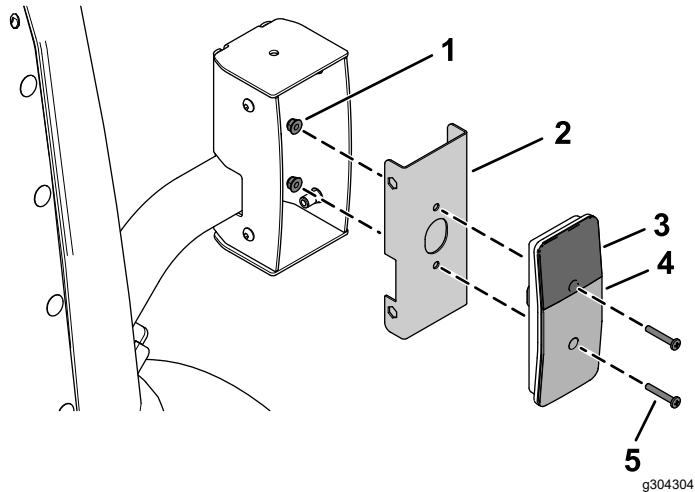


Figure 36

- | | |
|-------------------------|--|
| 1. Flange nut (#10) | 4. Red lens |
| 2. Inner mount assembly | 5. Pan-head screw (#10 x 1-1/4 inches) |
| 3. Amber lens | |

- Connect the wire-harness connector labeled REAR LIGHT LH (P01) to rear light ([Figure 35](#)).
- Connect the wire-harness connector labeled REAR LIGHT RH (P02) to rear light ([Figure 35](#)).

- Secure the assembled taillights to the taillight housings using 8 button-head bolts (1/4 x 3/4 inch) as shown in [Figure 37](#).

Ensure that you install the taillights with the yellow lens on top ([Figure 36](#) and [Figure 37](#)).

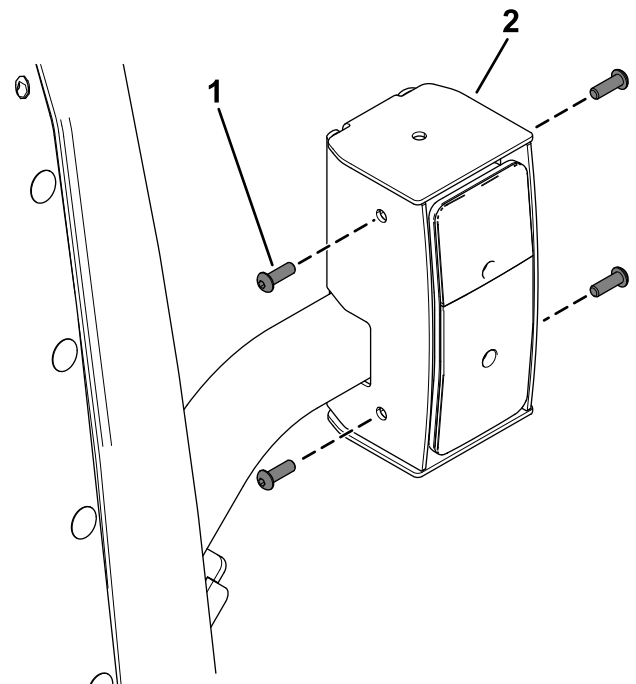


Figure 37

- | | |
|--------------------------------------|-----------------------|
| 1. Button-head bolt (1/4 x 3/4 inch) | 2. Taillight assembly |
|--------------------------------------|-----------------------|

- Route the wire-harness connector labeled LICENSE LIGHT (J01, J02) through the hood and connect it to the license light (Figure 38).

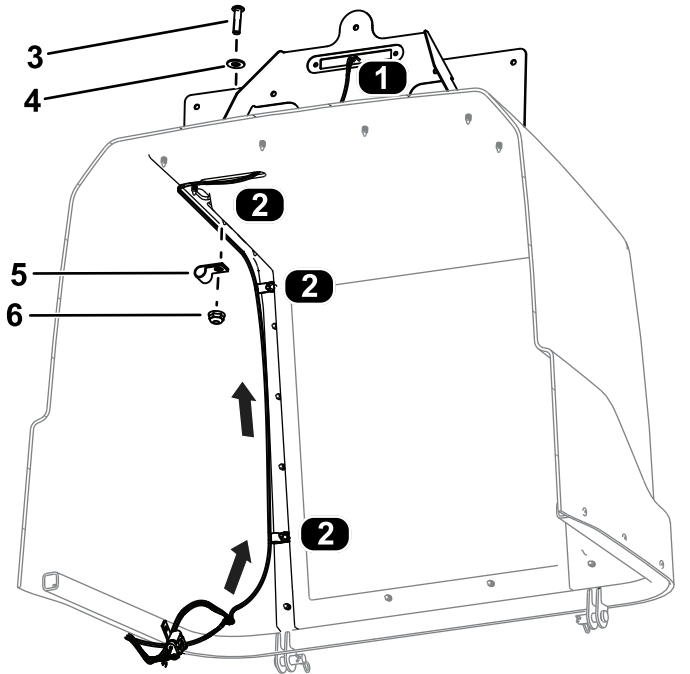


Figure 38

View from the bottom of the hood

- | | |
|--|--------------------------|
| 1. Wire-harness connection—license plate | 4. Flat washer |
| 2. Clamp locations | 5. Clamp |
| 3. Hex-socket screw (1/4 x 1 inch) | 6. Flange nut (1/4 inch) |

- Secure the wire harness to the hood using 3 hex-socket screws (1/4 x 1 inch), 3 flat washers, 3 clamps, and 3 flange nuts (1/4 inch) as shown in Figure 38.

- Connect the wire harness to the plate light (Figure 39).
- Secure the plate light to the assembled speed-plate mount using the 2 speed nuts installed in Figure 26 and 2 button-head bolts (#10 x 3/4 inch) as shown in Figure 39.

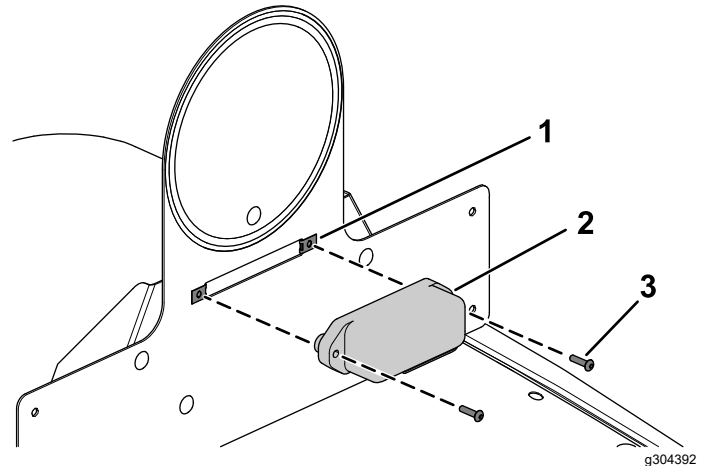


Figure 39

- | | |
|----------------|--------------------------------------|
| 1. Speed nut | 3. Button-head bolt (#10 x 3/4 inch) |
| 2. Plate light | |

7

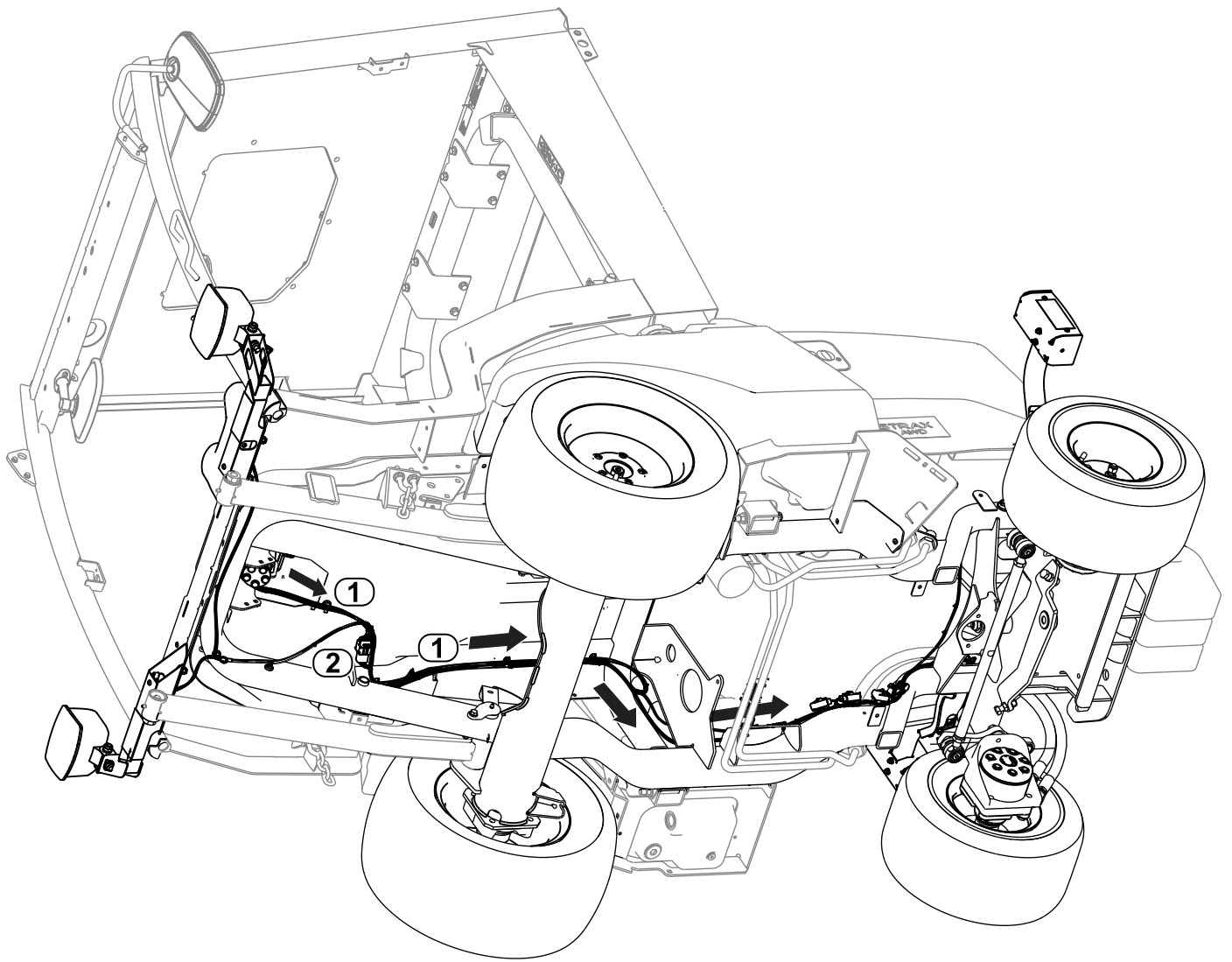
Routing the Control Wire Harness

Parts needed for this procedure:

1	Control wire harness
---	----------------------

Procedure

Refer to the following figures and instructions for routing the control wire harness.



g304234

Figure 40

1. Wire-harness routing

2. Control wire harness and light wire harness connection

1. Route the wire harness through the platform opening and along the light-wire-harness routing.
2. Connect the control wire-harness connector labeled TO ROAD LTS HARNESS (P06) to light wire-harness connector labeled TO MAIN HARNESS (P03).
3. Connect the control wire-harness connector labeled TO POWER HARNESS (P05) to power wire-harness connector labeled POD CONTROL HARNESS (P04).

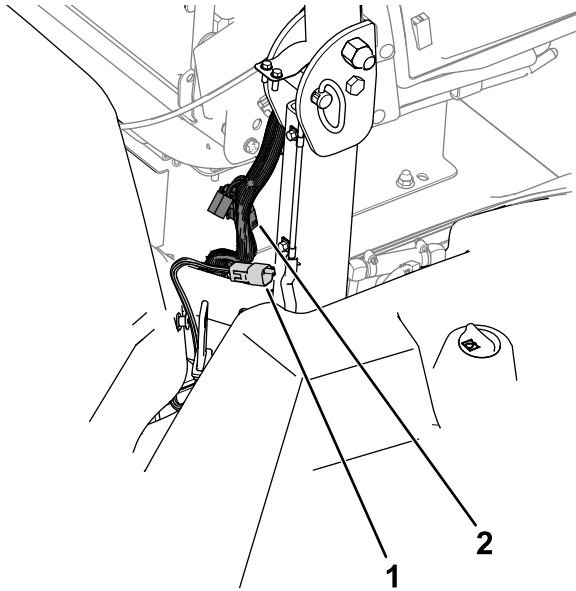


Figure 41

g304373

- | | |
|---|---|
| 1. P05 (Control-wire-harness connector) | 2. P04 (Machine-wire-harness connector) |
|---|---|

4. Connect the control wire-harness connectors labeled HORN (J01, J02) to the horn ([Figure 42](#)).

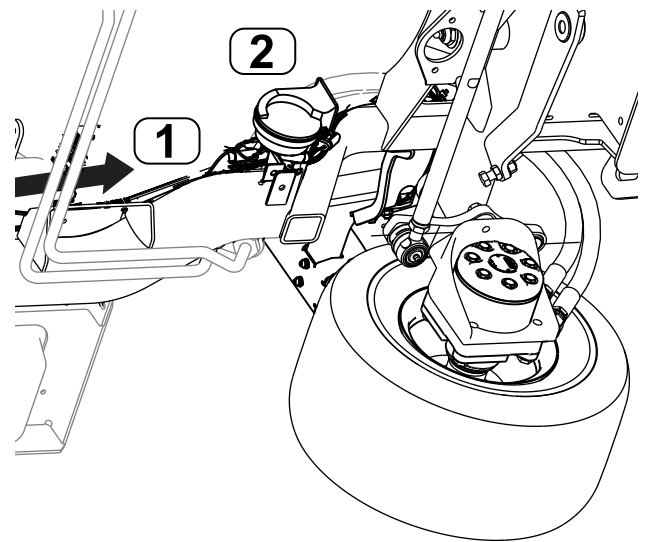


Figure 42

g304331

- | | |
|-----------------|--------------------|
| 1. Wire harness | 2. Horn connection |
|-----------------|--------------------|

8

Installing the Serial Plate

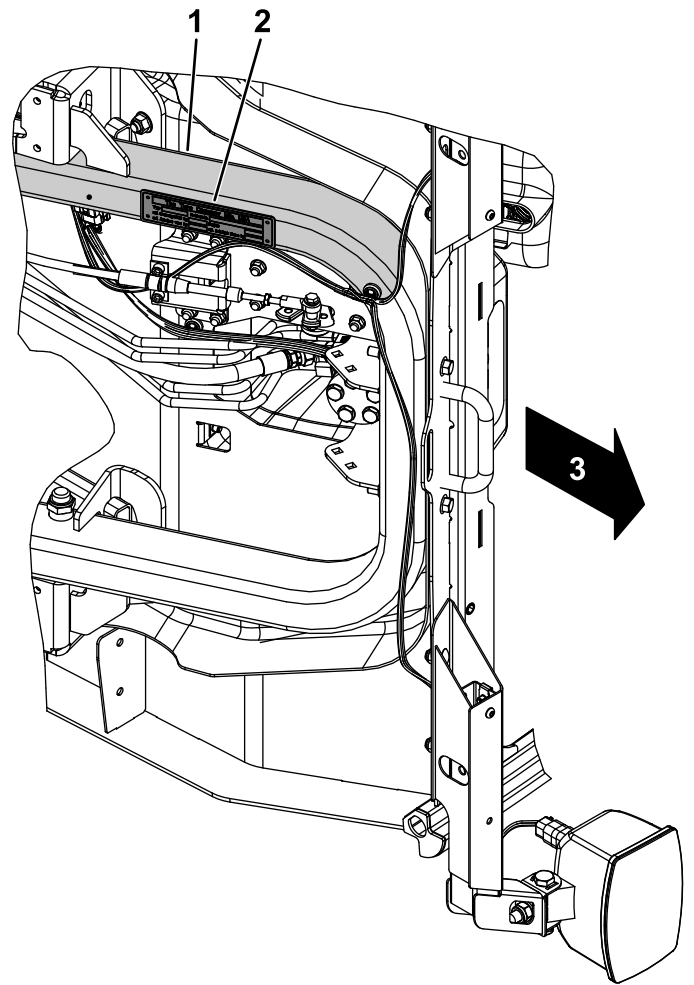
For Germany Only

Parts needed for this procedure:

1	Serial plate
1	Serial plate tape

Procedure

1. Stamp the serial number into the frame.
The text size must be 7 mm (1/4 inch) or larger.
2. Stamp the appropriate information into the serial plate.
3. Wipe down the bottom of the frame and serial plate with an alcohol-based wipe ([Figure 43](#)).



g304286

Figure 43

1. Clean the bottom of the frame.
2. Serial plate
3. Front of the machine frame

-
4. Apply the tape to the serial plate.
 5. Install the plate to the frame ([Figure 44](#)).
Use the dimensions shown in [Figure 45](#).

9

Connecting the Battery

No Parts Required

Procedure

Connect the battery; refer to the electrical system maintenance section of your *Operator's Manual*.

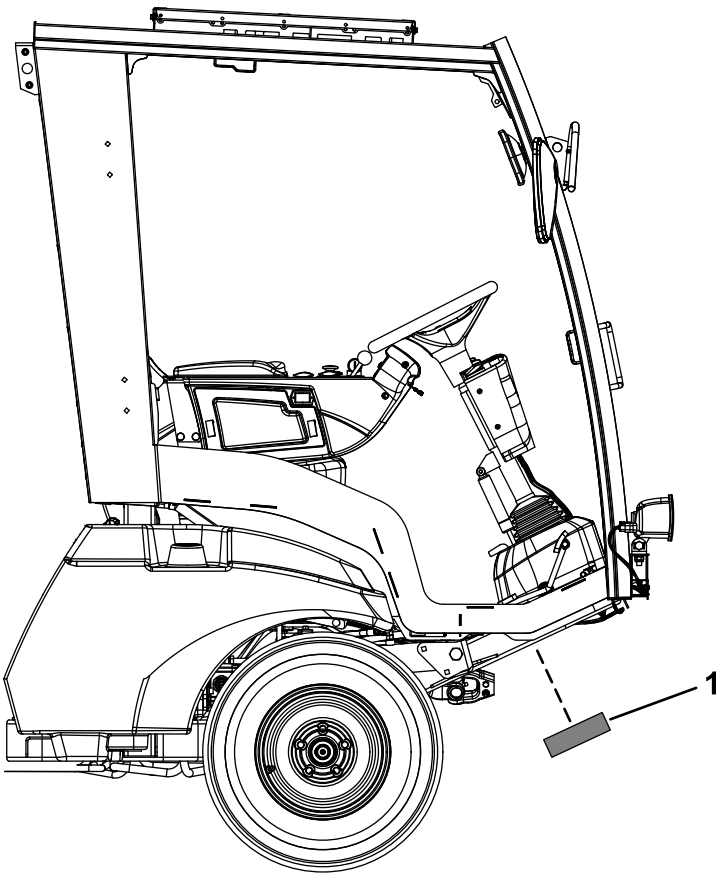


Figure 44

g304288

1. Serial plate

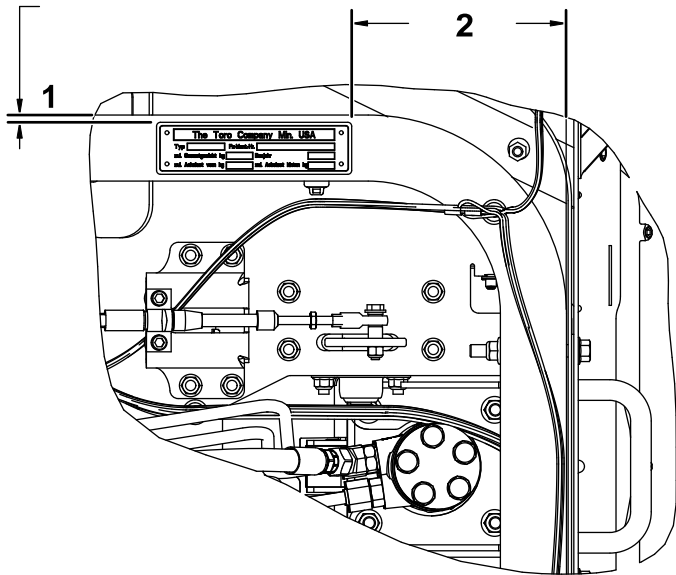


Figure 45

g304287

1. 2.5 to 8.1 mm (1/8 to 5/16 inch)
2. 162 to 168 mm (6-3/8 to 6-5/8 inches)

Notes:

EEA/UK Privacy Notice

Toro's Use of Your Personal Information

The Toro Company ("Toro") respects your privacy. When you purchase our products, we may collect certain personal information about you, either directly from you or through your local Toro company or dealer. Toro uses this information to fulfil contractual obligations - such as to register your warranty, process your warranty claim or to contact you in the event of a product recall - and for legitimate business purposes - such as to gauge customer satisfaction, improve our products or provide you with product information which may be of interest. Toro may share your information with our subsidiaries, affiliates, dealers or other business partners in connection these activities. We may also disclose personal information when required by law or in connection with the sale, purchase or merger of a business. We will never sell your personal information to any other company for marketing purposes.

Retention of your Personal Information

Toro will keep your personal information as long as it is relevant for the above purposes and in accordance with legal requirements. For more information about applicable retention periods please contact legal@toro.com.

Toro's Commitment to Security

Your personal information may be processed in the US or another country which may have less strict data protection laws than your country of residence. Whenever we transfer your information outside of your country of residence, we will take legally required steps to ensure that appropriate safeguards are in place to protect your information and to make sure it is treated securely.

Access and Correction

You may have the right to correct or review your personal data, or object to or restrict the processing of your data. To do so, please contact us by email at legal@toro.com. If you have concerns about the way in which Toro has handled your information, we encourage you to raise this directly with us. Please note that European residents have the right to complain to your Data Protection Authority.



The Toro Warranty

Two-Year or 1,500 Hours Limited Warranty

Conditions and Products Covered

The Toro Company warrants your Toro Commercial product ("Product") to be free from defects in materials or workmanship for 2 years or 1,500 operational hours*, whichever occurs first. This warranty is applicable to all products with the exception of Aerators (refer to separate warranty statements for these products). Where a warrantable condition exists, we will repair the Product at no cost to you including diagnostics, labor, parts, and transportation. This warranty begins on the date the Product is delivered to the original retail purchaser.

* Product equipped with an hour meter.

Instructions for Obtaining Warranty Service

You are responsible for notifying the Commercial Products Distributor or Authorized Commercial Products Dealer from whom you purchased the Product as soon as you believe a warrantable condition exists. If you need help locating a Commercial Products Distributor or Authorized Dealer, or if you have questions regarding your warranty rights or responsibilities, you may contact us at:

Toro Commercial Products Service Department
8111 Lyndale Avenue South
Bloomington, MN 55420-1196

952-888-8801 or 800-952-2740
E-mail: commercial.warranty@toro.com

Owner Responsibilities

As the product owner, you are responsible for required maintenance and adjustments stated in your *Operator's Manual*. Repairs for product issues caused by failure to perform required maintenance and adjustments are not covered under this warranty.

Items and Conditions Not Covered

Not all product failures or malfunctions that occur during the warranty period are defects in materials or workmanship. This warranty does not cover the following:

- Product failures which result from the use of non-Toro replacement parts, or from installation and use of add-on, or modified non-Toro branded accessories and products.
- Product failures which result from failure to perform recommended maintenance and/or adjustments.
- Product failures which result from operating the Product in an abusive, negligent, or reckless manner.
- Parts consumed through use that are not defective. Examples of parts which are consumed, or used up, during normal Product operation include, but are not limited to, brake pads and linings, clutch linings, blades, reels, rollers and bearings (sealed or greasable), bed knives, spark plugs, castor wheels and bearings, tires, filters, belts, and certain sprayer components such as diaphragms, nozzles, flow meters, and check valves.
- Failures caused by outside influence, including, but not limited to, weather, storage practices, contamination, use of unapproved fuels, coolants, lubricants, additives, fertilizers, water, or chemicals.
- Failure or performance issues due to the use of fuels (e.g. gasoline, diesel, or biodiesel) that do not conform to their respective industry standards.
- Normal noise, vibration, wear and tear, and deterioration. Normal "wear and tear" includes, but is not limited to, damage to seats due to wear or abrasion, worn painted surfaces, scratched decals or windows.

Countries Other than the United States or Canada

Customers who have purchased Toro products exported from the United States or Canada should contact their Toro Distributor (Dealer) to obtain guarantee policies for your country, province, or state. If for any reason you are dissatisfied with your Distributor's service or have difficulty obtaining guarantee information, contact your Authorized Toro Service Center.

Parts

Parts scheduled for replacement as required maintenance are warranted for the period of time up to the scheduled replacement time for that part. Parts replaced under this warranty are covered for the duration of the original product warranty and become the property of Toro. Toro will make the final decision whether to repair any existing part or assembly or replace it. Toro may use remanufactured parts for warranty repairs.

Deep Cycle and Lithium-Ion Battery Warranty

Deep cycle and Lithium-Ion batteries have a specified total number of kilowatt-hours they can deliver during their lifetime. Operating, recharging, and maintenance techniques can extend or reduce total battery life. As the batteries in this product are consumed, the amount of useful work between charging intervals will slowly decrease until the battery is completely worn out. Replacement of worn out batteries, due to normal consumption, is the responsibility of the product owner. Note: (Lithium-Ion battery only): Refer to the battery warranty for additional information.

Lifetime Crankshaft Warranty (ProStripe 02657 Model Only)

The ProStripe which is fitted with a genuine Toro Friction Disc and Crank-Safe Blade Brake Clutch (integrated Blade Brake Clutch (BBC) + Friction Disc assembly) as original equipment and used by the original purchaser in accordance with recommended operating and maintenance procedures, are covered by a Lifetime Warranty against engine crankshaft bending. Machines fitted with friction washers, Blade Brake Clutch (BBC) units and other such devices are not covered by the Lifetime Crankshaft Warranty.

Maintenance is at Owner's Expense

Engine tune-up, lubrication, cleaning and polishing, replacement of filters, coolant, and completing recommended maintenance are some of the normal services Toro products require that are at the owner's expense.

General Conditions

Repair by an Authorized Toro Distributor or Dealer is your sole remedy under this warranty.

The Toro Company is not liable for indirect, incidental or consequential damages in connection with the use of the Toro Products covered by this warranty, including any cost or expense of providing substitute equipment or service during reasonable periods of malfunction or non-use pending completion of repairs under this warranty. Except for the Emissions warranty referenced below, if applicable, there is no other express warranty. All implied warranties of merchantability and fitness for use are limited to the duration of this express warranty.

Some states do not allow exclusions of incidental or consequential damages, or limitations on how long an implied warranty lasts, so the above exclusions and limitations may not apply to you. This warranty gives you specific legal rights, and you may also have other rights which vary from state to state.

Note Regarding Emissions Warranty

The Emissions Control System on your Product may be covered by a separate warranty meeting requirements established by the U.S. Environmental Protection Agency (EPA) and/or the California Air Resources Board (CARB). The hour limitations set forth above do not apply to the Emissions Control System Warranty. Refer to the Engine Emission Control Warranty Statement supplied with your product or contained in the engine manufacturer's documentation.