



Count on it.

Parts Catalog

**eRecycler eS52VST 52cm
Lawn Mower Flex-Force Power System™**

Model No. 21853—Serial No. 40000000 and Up



Ordering Replacement Parts

To order replacement parts, please supply the part number, the quantity, and the description of each part desired.

Understanding Reference Numbers

Each identified part in an illustration has a reference number. The reference number for a part also appears in the parts list, along with other information about the part.

This catalog uses two special reference number formats, one to indicate parts in a service assembly and another to indicate the quantity of a given part in an illustration.

Service Assembly Reference Numbers

Parts in service assemblies have reference numbers in the form a:b. The a represents the reference number of the entire service assembly and the b represents a sequential number unique to each part within the service assembly.

For example, a wheel assembly might be identified by reference number 6, the tire by 6:1, the valve by 6:2, and the wheel by 6:3. When you order the assembly identified by reference number 6, you receive all parts identified by reference numbers 6:1, 6:2, and 6:3. However, you may also order any part individually. Reference numbers of this type appear in illustration and in parts lists.

Reference Numbers Indicating Quantity

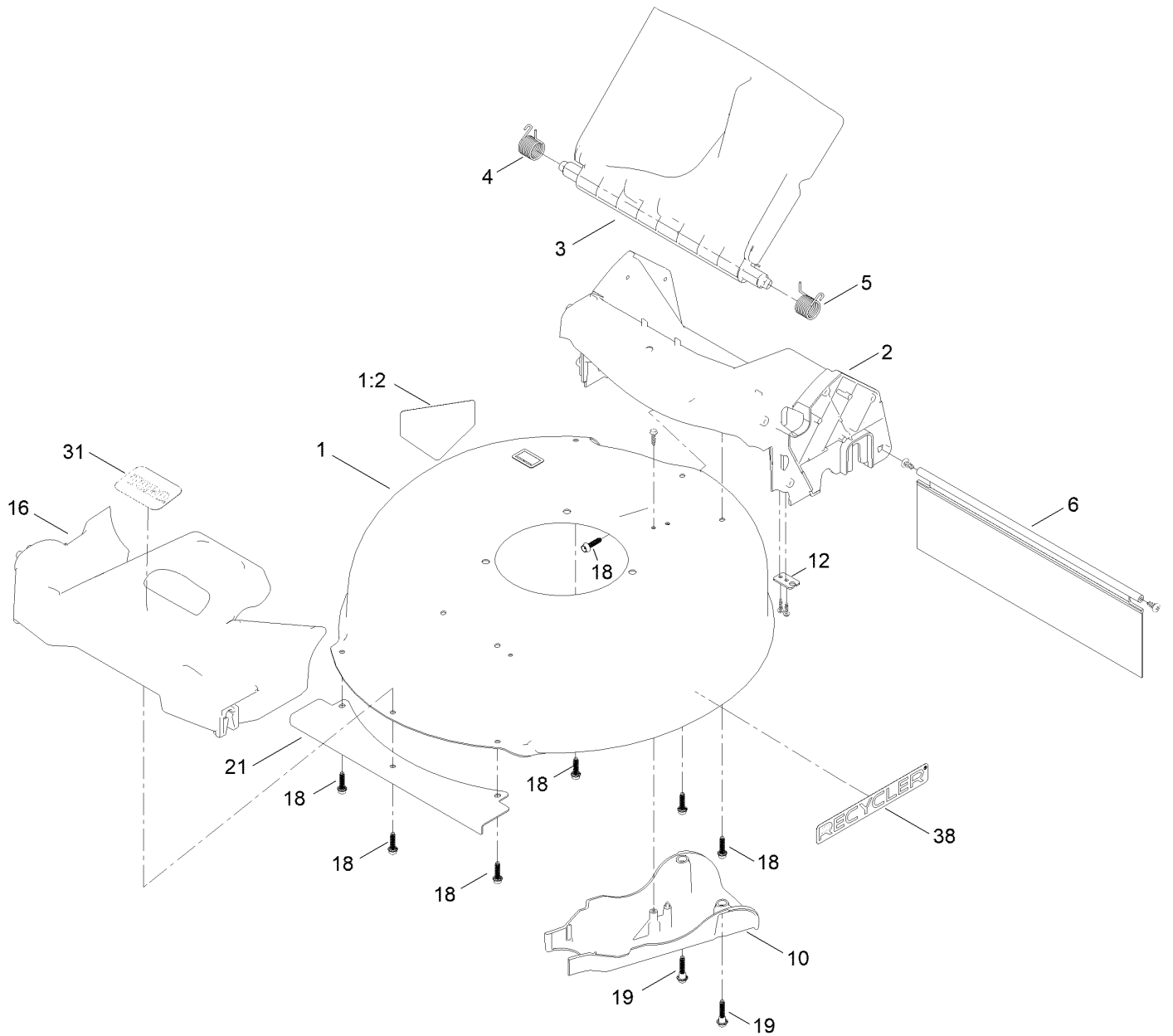
In an illustration, if a reference number indicates more than one part, the reference number has the form nX y. The n represents the quantity of the part, the X is the multiplication symbol, and the y represents the reference number.

For example, in an illustration, the reference number 2X 37 means that two of the parts identified by reference number 37 are indicated.

Contents

Housing Assembly	4
Grass Bag and Frame Assembly	6
Motor Module and Blade Assembly	8
Motor Module Assembly No. 140-4213	10
Motor Module Assembly No. 140-4213	12
Front Wheel and Height-of-Cut Assembly	14
Rear Wheel and Height-of-Cut Assembly	16
Handle Assembly	18
Starter Switch Assembly	20
Attachments and Accessories	22

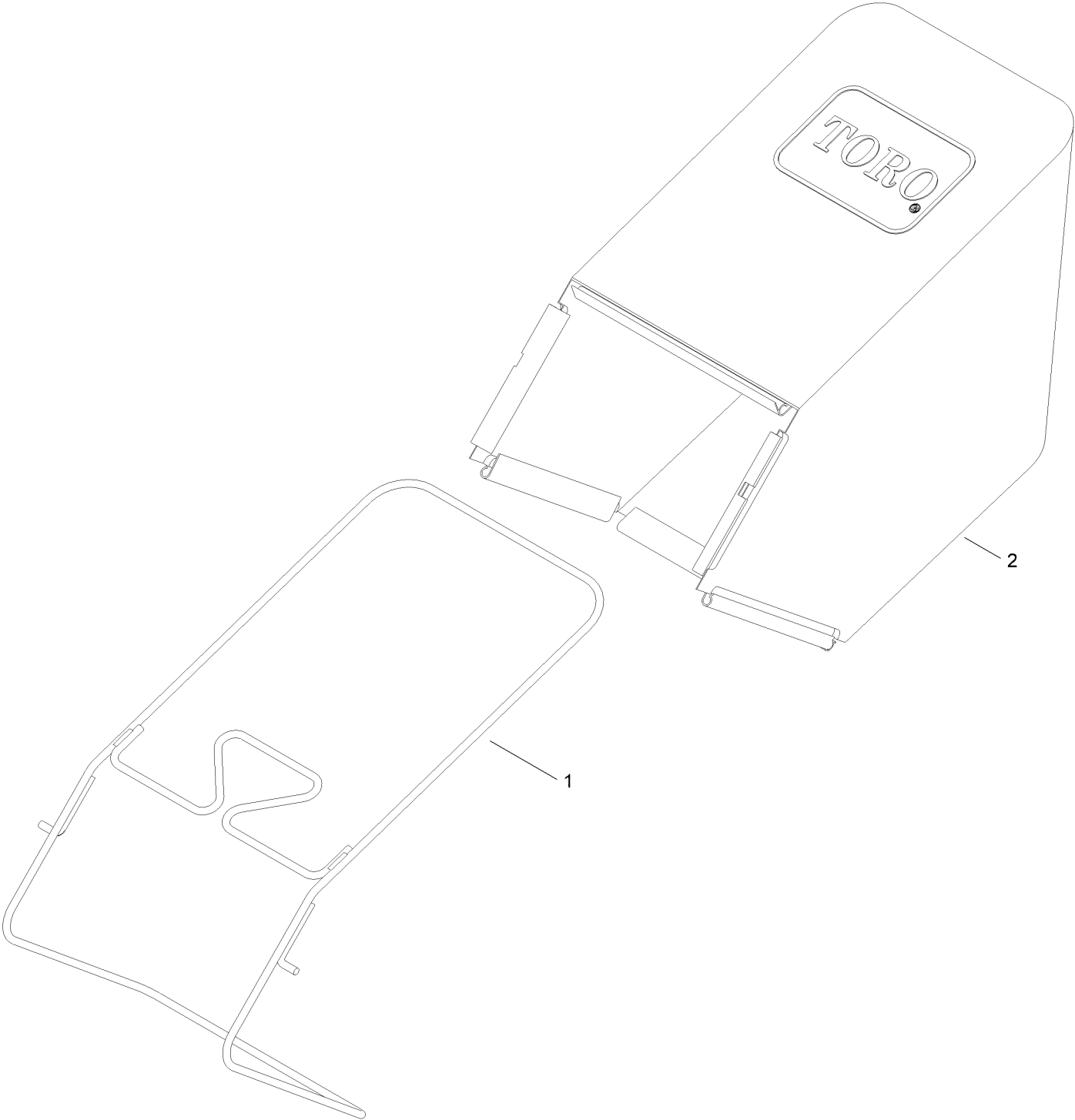
Housing Assembly



Housing Assembly (continued)

<i>Ref.</i>	<i>Part Number</i>	<i>Qty.</i>	<i>Description</i>	<i>Ref.</i>	<i>Part Number</i>	<i>Qty.</i>	<i>Description</i>
1	145-5525-01	1	Housing-Deck	12	127-0730	1	Bracket-Cable
1:2	112-8760	1	Decal-Danger	16	145-5518	1	Bumper
2	145-5506	1	Chute-Sp/Awd, 21 In	18	130-6658	7	Screw-Flange, Plastic
3	145-5517	1	Deflector-Rear ASM	19	131-0837	2	Screw-Shoulder, HHF
4	147-0465	1	Spring-Torsion	21	131-0820-03	1	Shield-Front
5	147-0466	1	Spring-Torsion	31	145-0854	1	Decal-Toro, Silver
6	147-0443	1	Shield-Trailing	38	147-0570	2	Decal-Erecycler
10	127-0723	1	Cover-Belt				

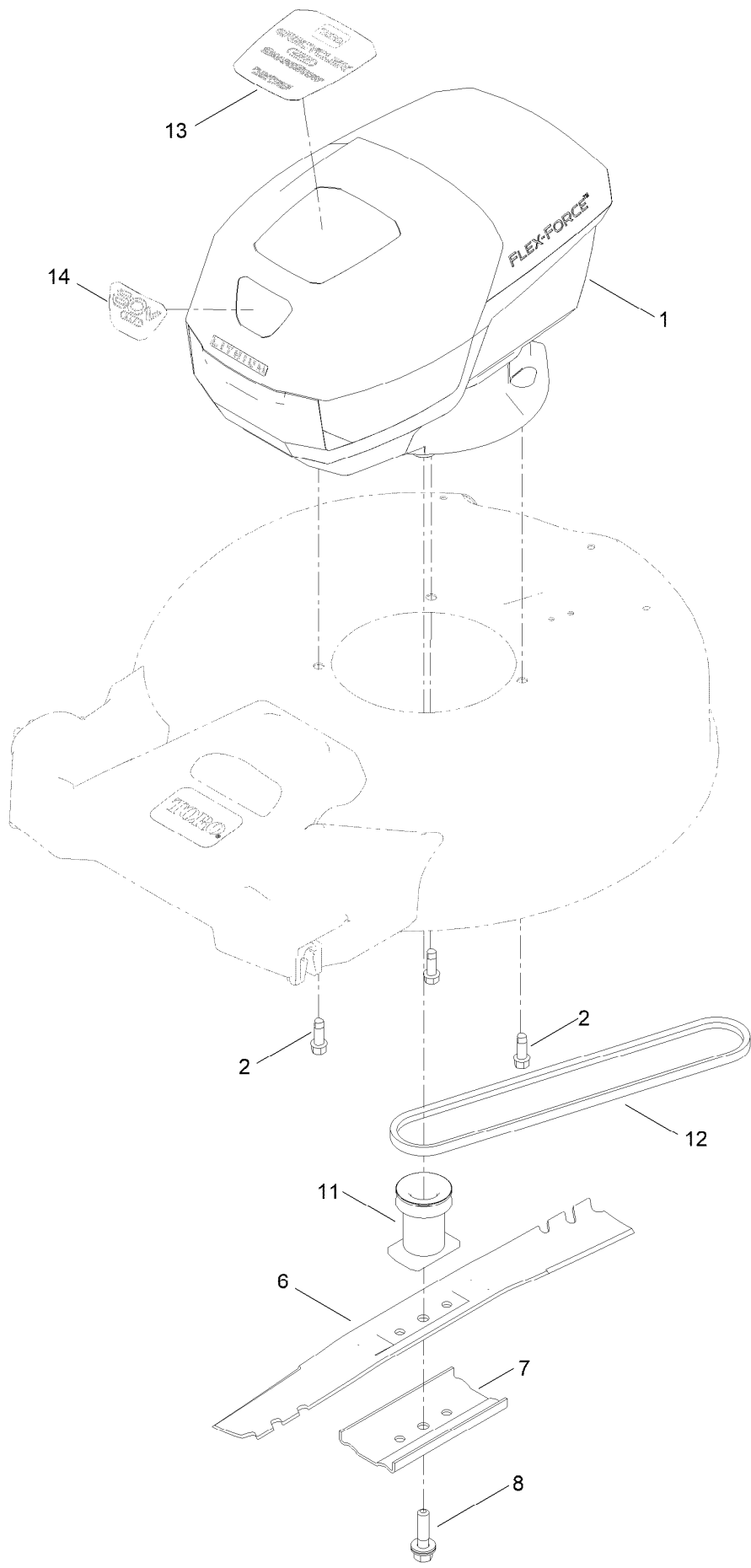
Grass Bag and Frame Assembly



Grass Bag and Frame Assembly (continued)

<i>Ref.</i>	<i>Part Number</i>	<i>Qty.</i>	<i>Description</i>
1	145-5512-03	1	Frame-Bag
2	147-0418	1	Bag ASM

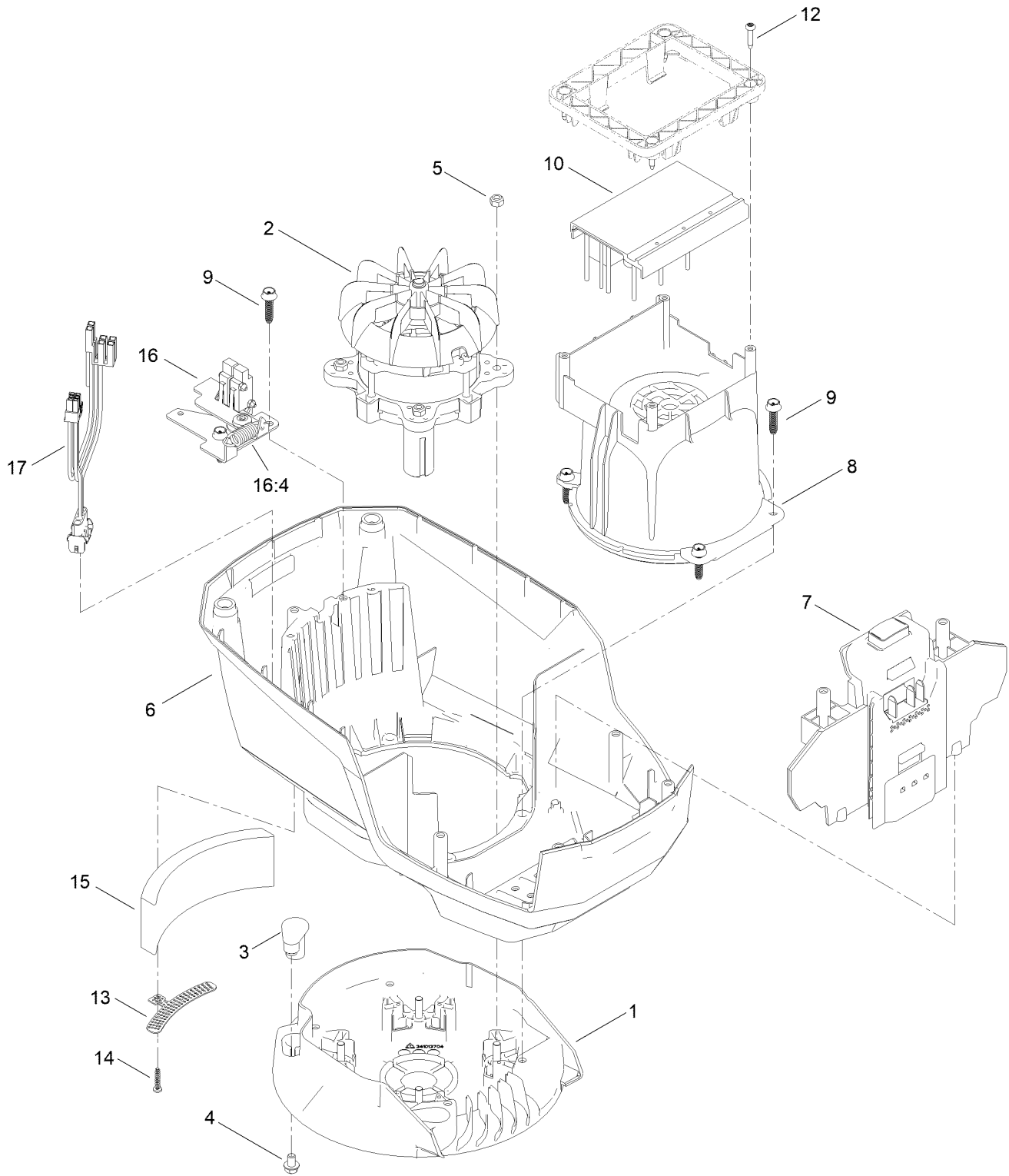
Motor Module and Blade Assembly



Motor Module and Blade Assembly (continued)

<i>Ref.</i>	<i>Part Number</i>	<i>Qty.</i>	<i>Description</i>	<i>Ref.</i>	<i>Part Number</i>	<i>Qty.</i>	<i>Description</i>
1	140-4213	1	Motor Module	11	139-1816	1	Driver-Blade
2	95-1726	3	Screw-Taptite	12	115-4669	1	Belt-V
6	140-1274-03	1	Blade-21In (Mulch, Hs)	13	147-0567	1	Decal-Es52Vst, Top
7	108-3766-03	1	Support-Blade	14	147-0568	1	Decal - 60V, Front
8	125-2466	1	Bolt-Blade				

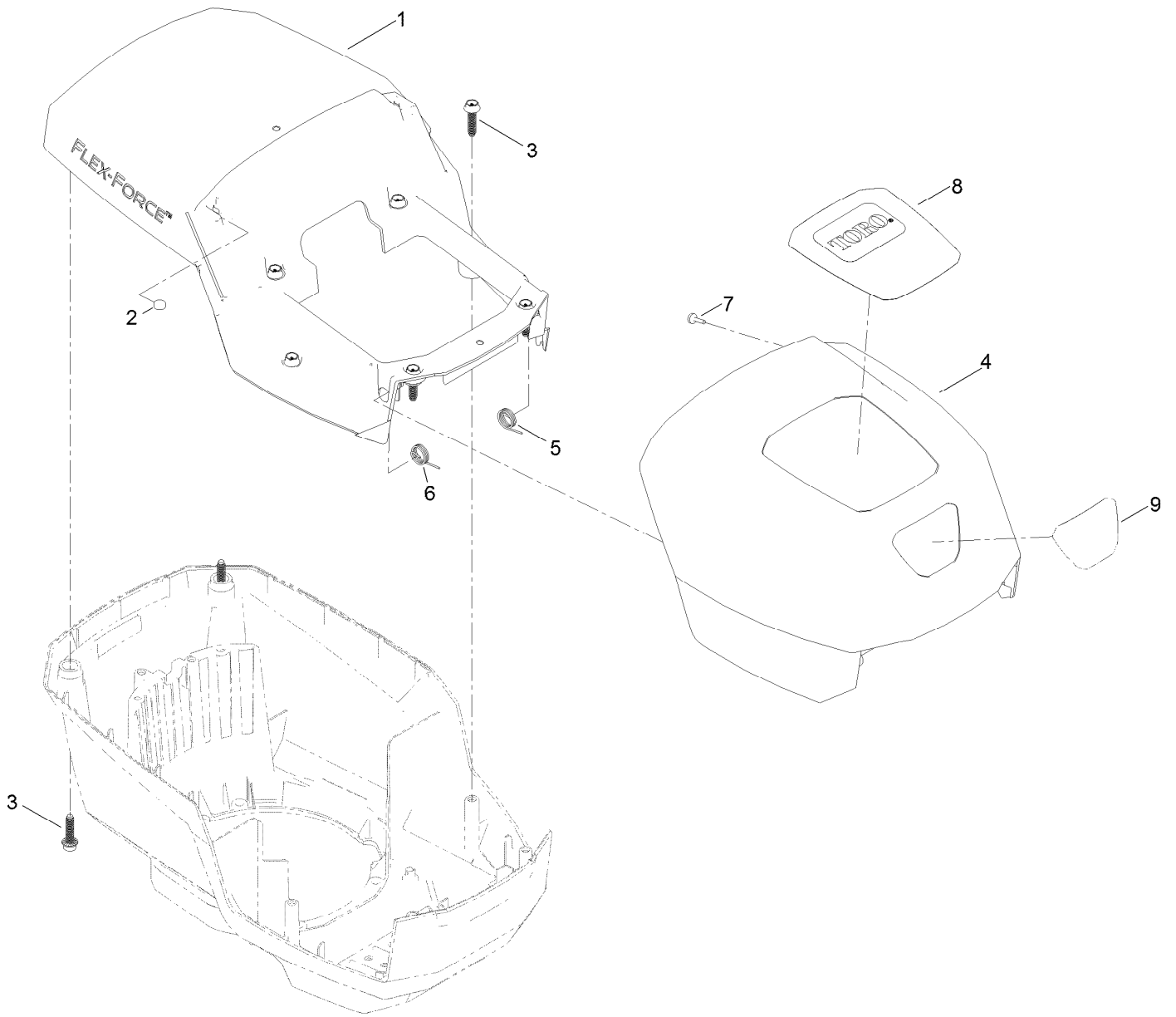
Motor Module Assembly No. 140-4213



Motor Module Assembly No. 140-4213 (continued)

<i>Ref.</i>	<i>Part Number</i>	<i>Qty.</i>	<i>Description</i>	<i>Ref.</i>	<i>Part Number</i>	<i>Qty.</i>	<i>Description</i>
1	139-6628	1	Base-Mount, Motor	10	134-5078	1	Controller-Motor, 60V [2-Sp]
2	138-6661	1	Motor, 60 Volt	12	139-6642	4	Screw
3	131-9732	3	Insert-Mount, Motor	13	139-6635	1	Bracket-Foam
4	137-4795	3	Screw	14	138-3273	1	Screw-Plastic, PPH
5	115-7373	4	Nut-Lock	15	139-6636	1	Foam
6	139-6631	1	Shroud-Lower	16	133-1918	1	Bail Switch ASM
7	139-6632	1	Battery Reciever ASM	16:4	145-5800	1	Spring-Extension
8	139-6633	1	Shroud-Motor	17	139-6637	1	Harness-Wire
9	130-6658	6	Screw-Flange, Plastic				

Motor Module Assembly No. 140-4213

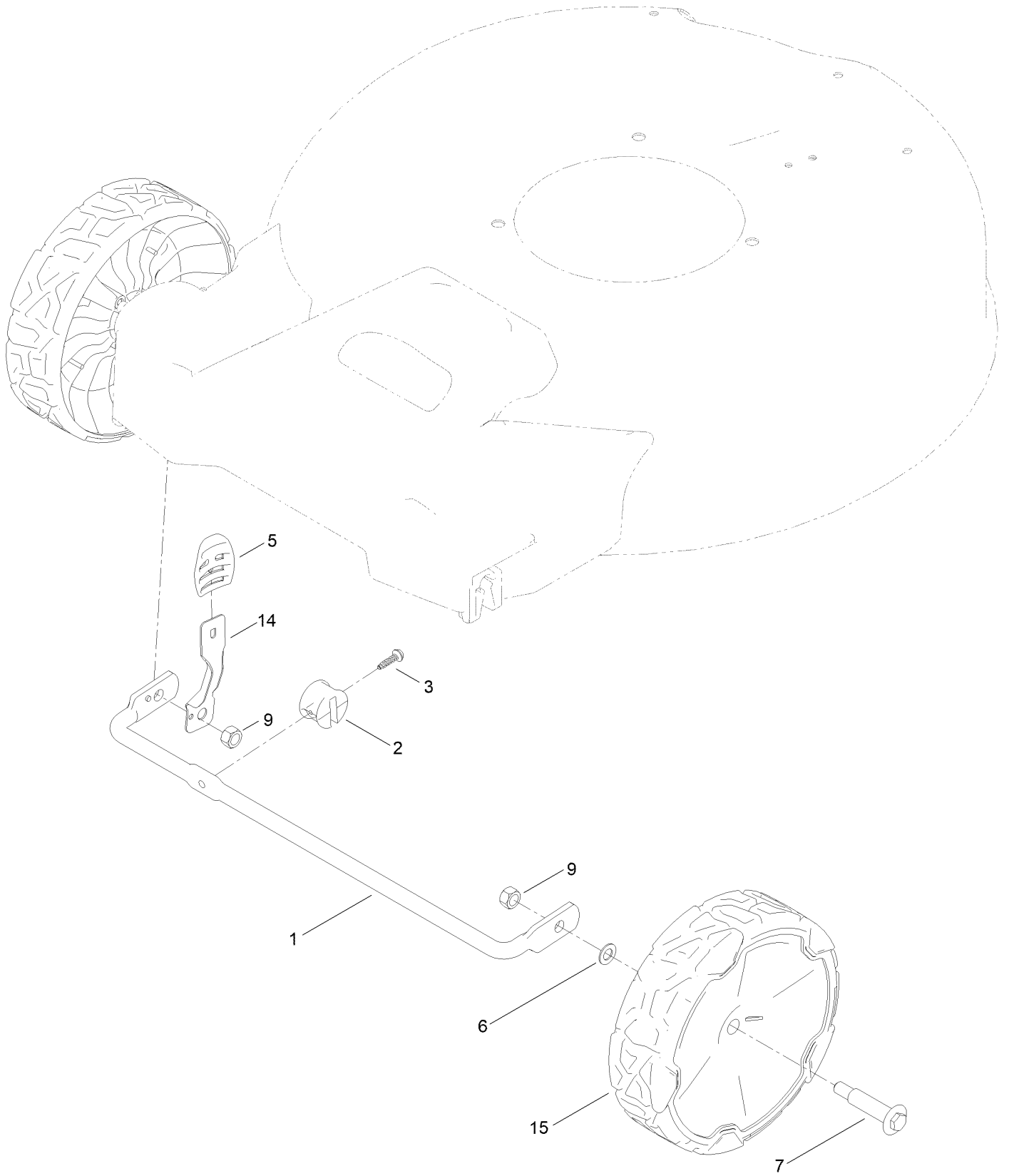


Motor Module Assembly No. 140-4213 (continued)

<i>Ref.</i>	<i>Part Number</i>	<i>Qty.</i>	<i>Description</i>
1	139-6638	1	Shroud-Upper
2	114-5896	2	Magnet
3	130-6658	8	Screw-Flange, Plastic
4	139-6639	1	Hood
5	139-6640	1	Spring-LH

<i>Ref.</i>	<i>Part Number</i>	<i>Qty.</i>	<i>Description</i>
6	139-6641	1	Spring-RH
7	95-4234	2	Screw-PPH
8	136-9118	1	Decal-Hood, Top
9	136-9119	1	Decal-Hood, Front

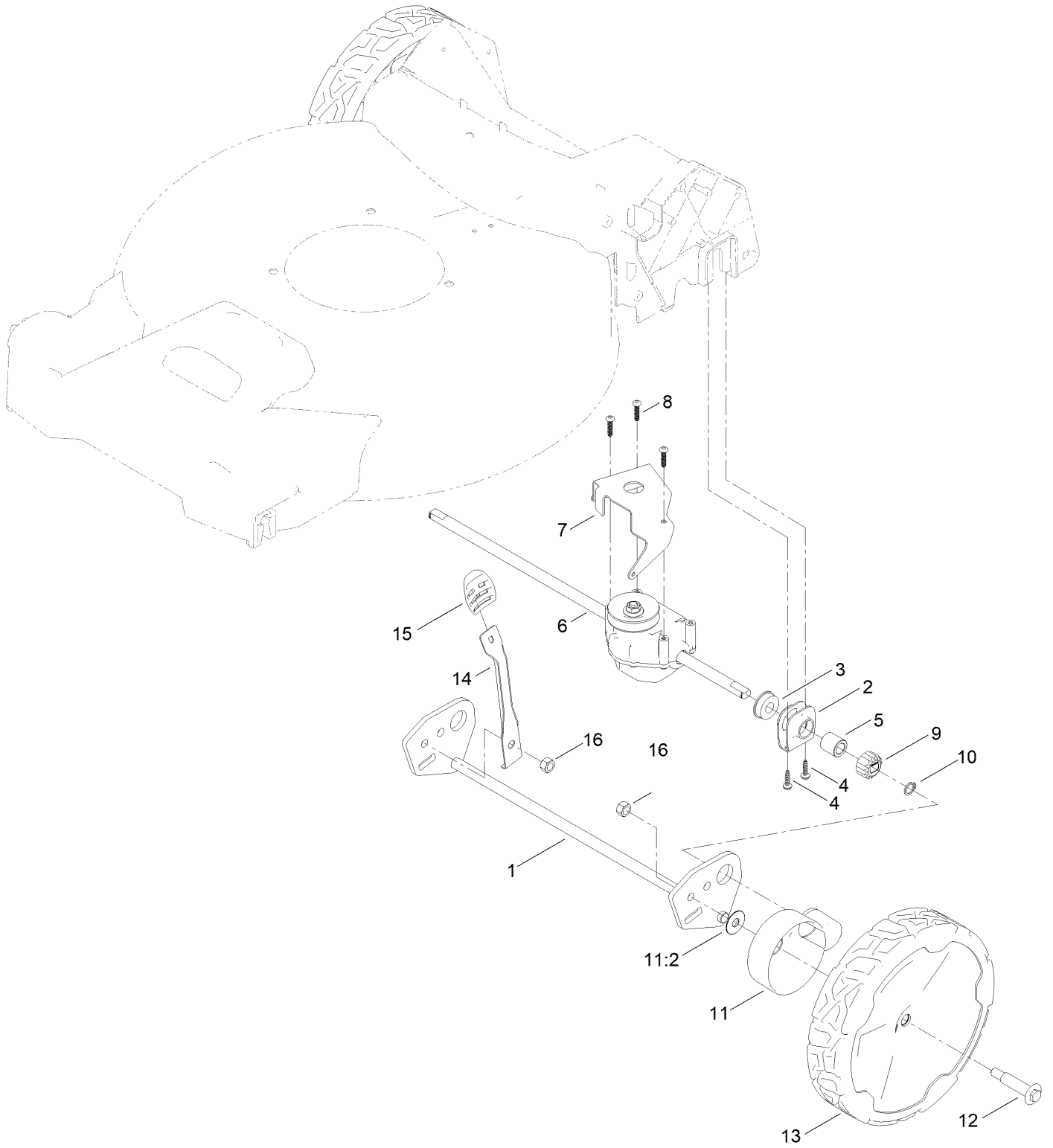
Front Wheel and Height-of-Cut Assembly



Front Wheel and Height-of-Cut Assembly (continued)

<i>Ref.</i>	<i>Part Number</i>	<i>Qty.</i>	<i>Description</i>	<i>Ref.</i>	<i>Part Number</i>	<i>Qty.</i>	<i>Description</i>
1	127-0668-03	1	Axle-Front	7	92-1057	2	Bolt-Shoulder
2	127-6800	1	Stop-Axle	9	603773	2	Nut-Hex Lock
3	139-1690	1	Screw-Plastic, HWH	14	147-0435	1	Arm-Spring
5	105-3042	1	Knob-Lever, HOC	15	140-2355	2	ASM-8" Wheel, Idler
6	40-1940	2	Washer				

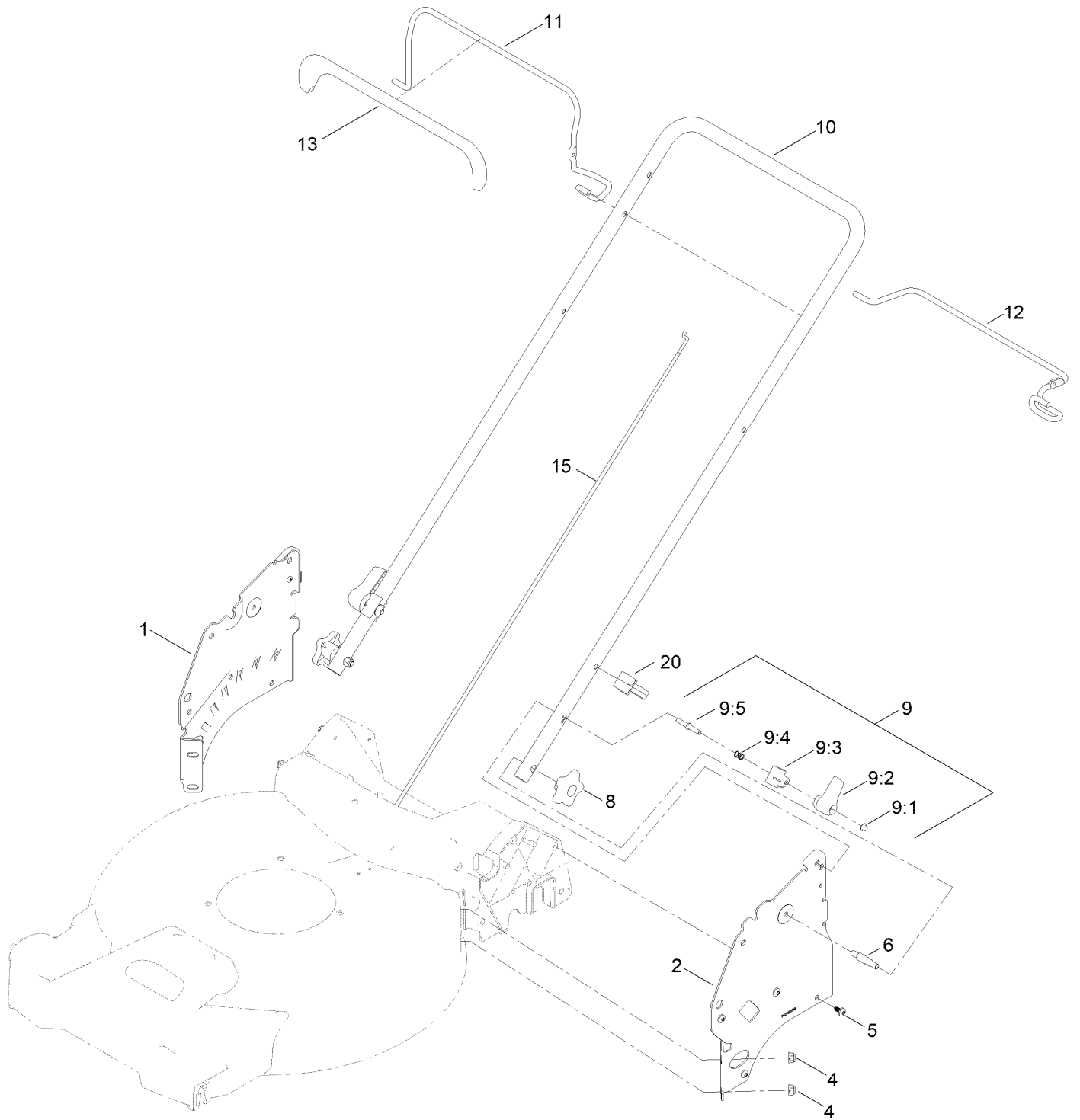
Rear Wheel and Height-of-Cut Assembly



Rear Wheel and Height-of-Cut Assembly (continued)

<i>Ref.</i>	<i>Part Number</i>	<i>Qty.</i>	<i>Description</i>	<i>Ref.</i>	<i>Part Number</i>	<i>Qty.</i>	<i>Description</i>
1	145-5501-03	1	Axle-Rear, Wa	10	32151-61	2	Ring-Retaining
2	138-3234	2	Retainer-Bearing	11	140-2362	2	ASM-Cover, Gear (Dk Gray)
3	104-8699	2	Bearing-Ball	11:2	614426	1	Washer-Stepped
4	139-1690	4	Screw-Plastic, HWH	12	92-1057	2	Bolt-Shoulder
5	127-6896	2	Bushing-Sleeve	13	140-2350	2	ASM-9.65" Wheel, Geared
6	145-5515	1	Transmission (7:1 Ratio)	14	147-0437	1	Arm-Spring
7	145-5513-03	1	Bracket-Transmission	15	105-3042	1	Knob-Lever, HOC
8	120-9676	3	Screw-Plastite	16	603773	2	Nut-Hex Lock
9	131-5399	2	Gear-Pinion, 15T				

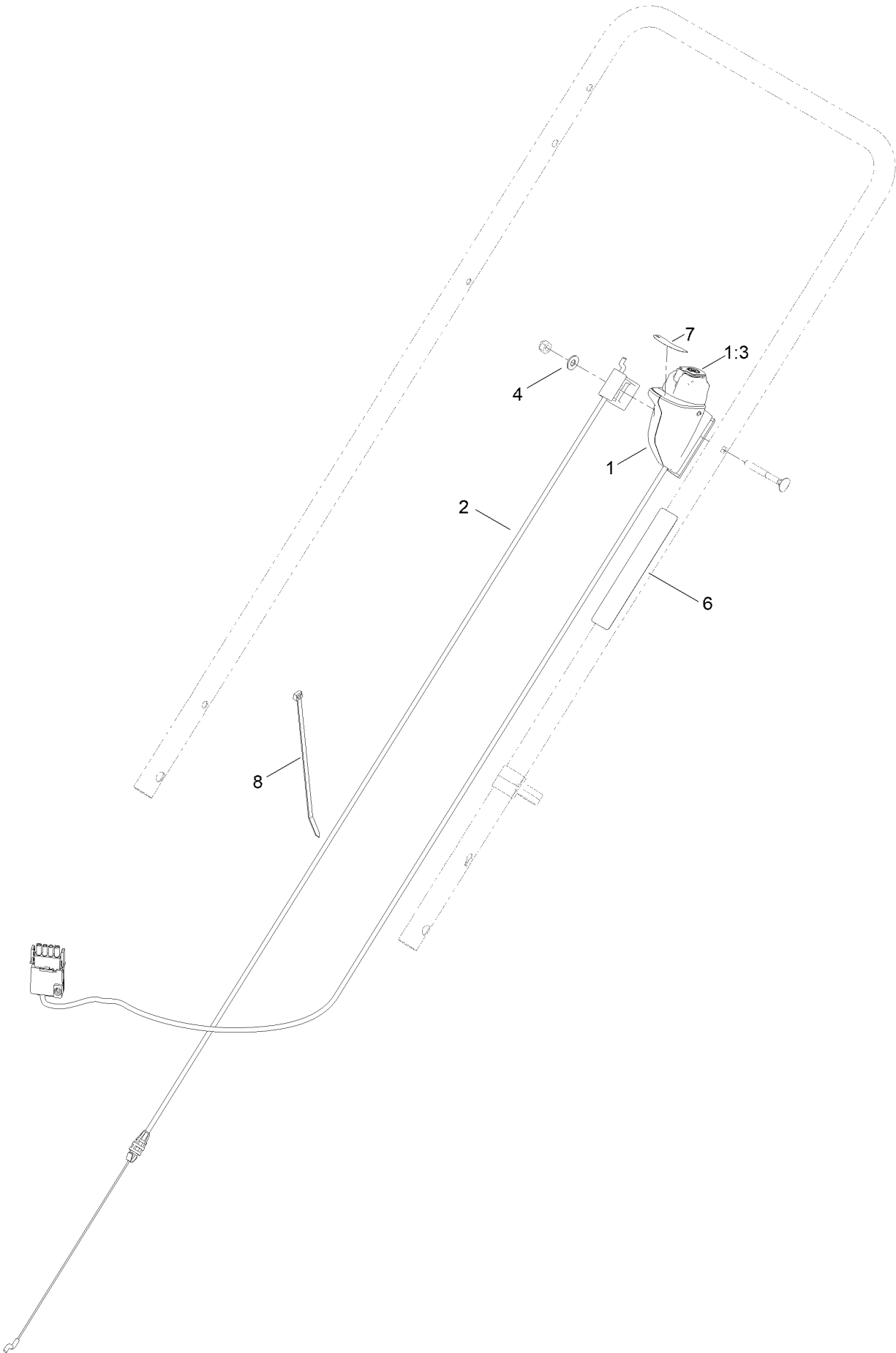
Handle Assembly



Handle Assembly (continued)

<i>Ref.</i>	<i>Part Number</i>	<i>Qty.</i>	<i>Description</i>	<i>Ref.</i>	<i>Part Number</i>	<i>Qty.</i>	<i>Description</i>
1	145-5507-05	1	Plate-Handle, RH	9:3	138-3253	1	Anchor-Spring
2	145-5508-05	1	Plate-Handle, LH	9:4	115-2858	1	Spring-Compression
4	138-8401	4	Nut-HF	9:5	140-4158	1	Rod-Release
5	139-1679	8	Screw-Plastic,PH	10	145-5509-05	1	Handle-Upper
6	139-6588	2	Bolt-Shoulder, Handle	11	138-3270-03	1	Bail-Brake
8	117-5976	2	Knob-Handle	12	137-4799-03	1	Bail-Traction
9	138-3249	2	Quick Release ASM	13	137-4797	1	Cover-Bail
9:1	140-4157	1	Nut-Push	15	127-0733	1	Cable-Traction
9:2	138-3248	1	Lever-Release	20	114-7988	1	Guide-Cable

Starter Switch Assembly



Starter Switch Assembly (continued)

<i>Ref.</i>	<i>Part Number</i>	<i>Qty.</i>	<i>Description</i>	<i>Ref.</i>	<i>Part Number</i>	<i>Qty.</i>	<i>Description</i>
1	140-3800	1	Switch-Starter ASM	6	144-3175	1	Decal-Controls (60V Start)
1:3	134-5125	1	Starter Button, 2-Sp	7	134-4691	1	Decal - Control Speed
2	147-0444	1	Cable - Brake	8	614249	1	Tie-Cable
4	139-1699	1	Washer-Flat				

Attachments and Accessories

For 21853 eRecycler eS52VST 52cm Lawn Mower Flex-Force Power System

Product Name	Model/Part
Smart Stow Walk Power Mower Cover	490-2012
Lawn Striping Kit with 22in Roller.....	20601
Bag-Walk Behind (Toro).....	490-7318
60V 6.0 AH Battery CE	81860
60V 7.5 AH Battery CE	81875
60V Battery Charger 2 Amp CE	81802
60V Brushless Blower (Bare Tool)	51825T
60V Brushless Trimmer (Bare Tool).....	51835T

Notes:



Count on it.