



Auxiliary Hydraulic Kit

Groundsmaster® 3200 or 3300 Series Traction Unit

Model No. 31966

Installation Instructions

Installation

Loose Parts

Use the chart below to verify that all parts have been shipped.

Procedure	Description	Qty.	Use
1	No parts required	–	Prepare the machine.
2	Manifold Switch Carriage bolt (5/16 x 1 inch) Locknut (5/16 inch) Male coupler Female coupler Bolt (5/16 x 3/4 inch) 12V port Hydraulic tube	1 2 2 2 1 1 3 1 1	Install the manifold.
3	Wire harness Magnetic clip Cable tie	1 8 2	Route the wire harness.

Note: Install this kit prior to installing any front attachment or remove any front attachment before installation.

Note: Before installing this kit, install one of the following kits: Accessory Control Kit, North American Road Light Kit, or the EU Road Light Kit.

1

Preparing the Machine

No Parts Required

Preparing the Machine

1. Park the machine on a level surface.
2. Shift to the NEUTRAL position.
3. Lower all attachments (if equipped).
4. Engage the parking brake.
5. Shut off the engine and remove the key.
6. Disconnect the battery; refer to your machine *Operator's Manual*.



2

Installing the Manifold

Parts needed for this procedure:

1	Manifold
2	Switch
2	Carriage bolt (5/16 x 1 inch)
2	Locknut (5/16 inch)
1	Male coupler
1	Female coupler
3	Bolt (5/16 x 3/4 inch)
1	12V port
1	Hydraulic tube

Procedure

1. Install the male and female hydraulic connectors to the manifold (Figure 1).
2. Remove the plastic nut and use it to connect the 12V port to the bracket (Figure 1).
3. Install the bracket to the manifold with 3 bolts (5/16 x 3/4 inch); refer to Figure 1.

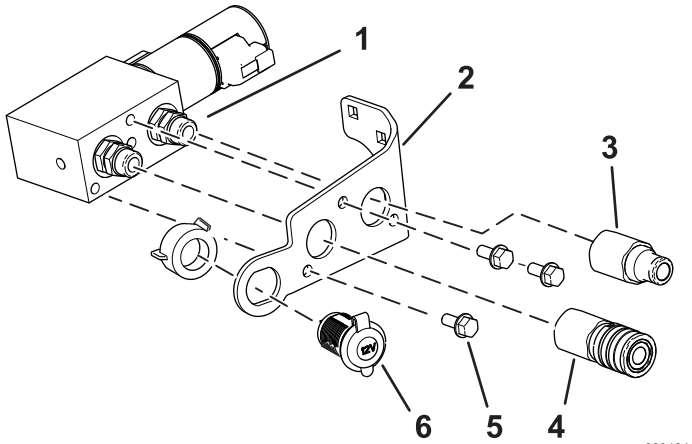


Figure 1

- | | |
|-----------------------------|-------------------------------|
| 1. Manifold | 4. Female hydraulic connector |
| 2. Bracket | 5. Bolt (5/16 x 3/4 inch) |
| 3. Male hydraulic connector | 6. 12V port |

4. Secure the bracket with the manifold to the machine with 2 carriage bolts (5/16 x 1 inch) and 2 locknuts (5/16 inch) as shown in Figure 2.

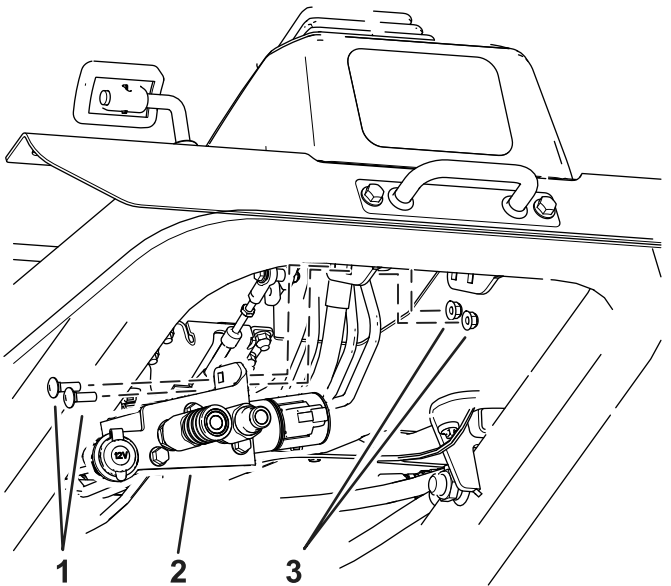


Figure 2

- | | |
|----------------------------------|------------------------|
| 1. Carriage bolt (5/16 x 1 inch) | 3. Locknut (5/16 inch) |
| 2. Bracket with manifold | |

5. Remove the existing hydraulic hose from the steering pump (Figure 3).

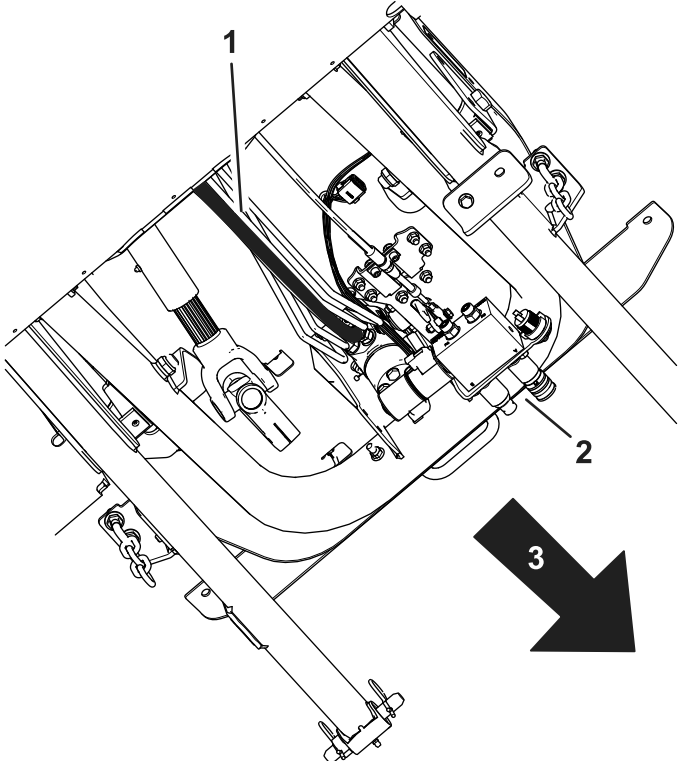
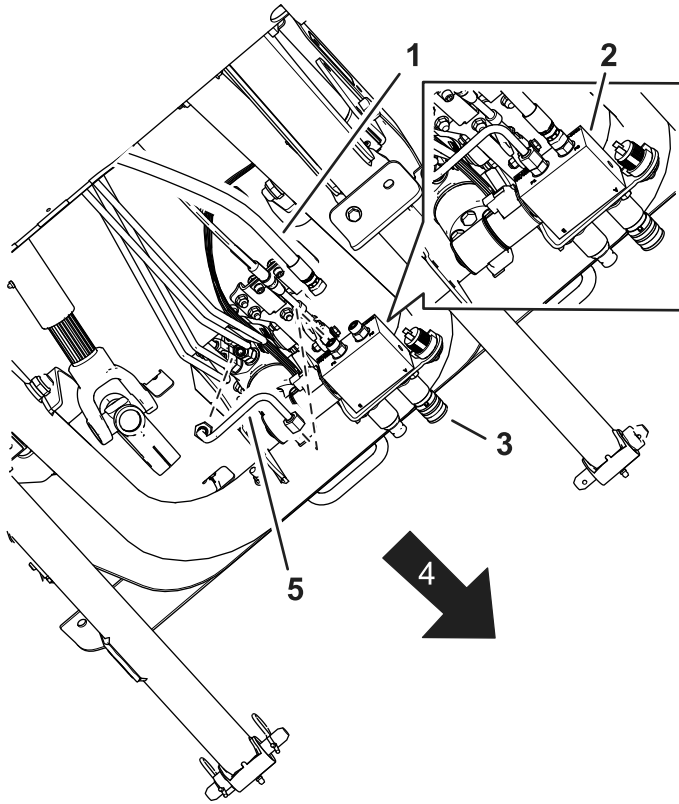


Figure 3

Bottom of the machine

- | | |
|--|-------------------------|
| 1. Existing hose connected to the steering valve | 3. Front of the machine |
| 2. Manifold | |

6. Install the hydraulic tube to the steering valve where the hose was removed (Figure 4).
7. Connect the hydraulic tube to the manifold as shown in Figure 4.
8. Connect the hydraulic hose to the manifold as shown in Figure 4.



g309183

Figure 4
Bottom of the machine

- | | |
|---|-------------------------|
| 1. Existing hose | 4. Front of the machine |
| 2. Correct location for the hose and tube in the manifold | 5. Hydraulic tube |
| 3. Manifold | |
-

3

Routing the Wire Harness

Parts needed for this procedure:

1	Wire harness
8	Magnetic clip
2	Cable tie

Procedure

1. Loosen the bolts around the steering-column base (Figure 5)
2. Raise the base up and drill a 22 mm (7/8 inch) hole as shown in Figure 5.

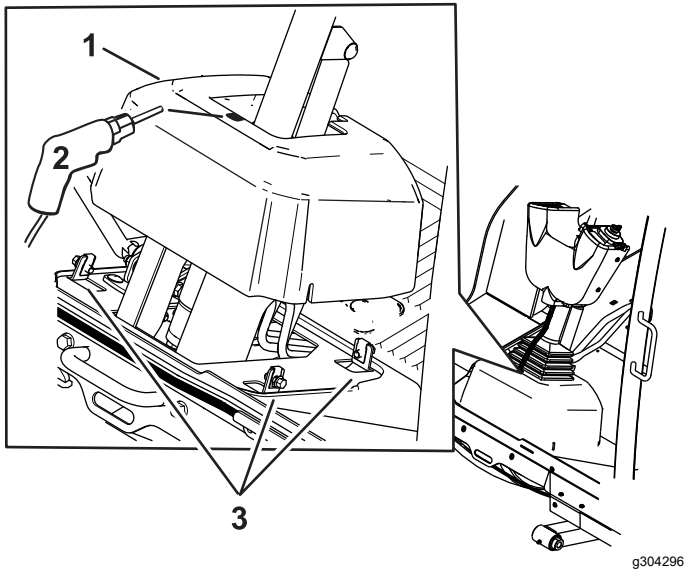


Figure 5

1. Steering-column base
2. Drill a 22 mm (7/8 inch) hole
3. Bolts

3. Route the harness through the hole in the base.
4. Secure the base to the machine (Figure 5).
5. Remove the control cover (Figure 6).

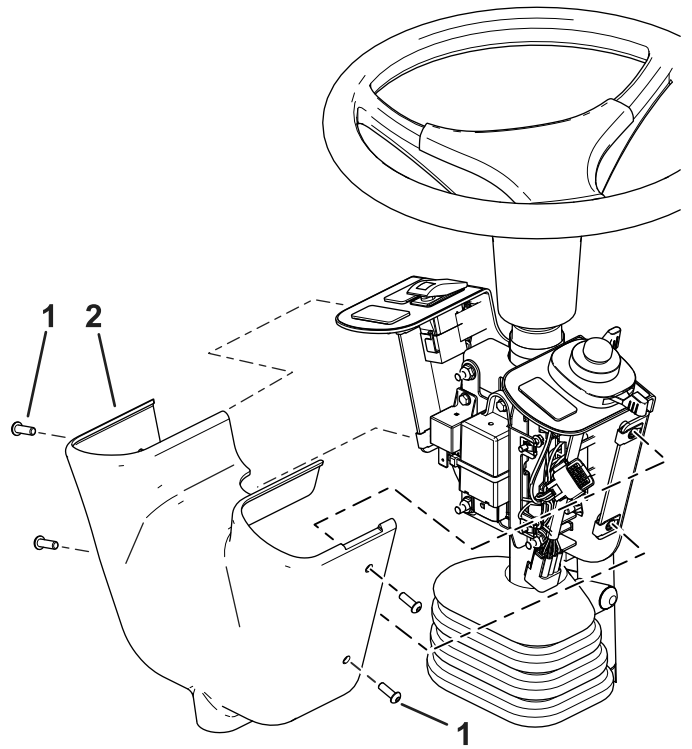


Figure 6

1. Screw
2. Control cover

6. Install the connectors for the switches into the switch mount on the steering column (Figure 7).
7. Install the switches into the connectors and switch mount (Figure 7).

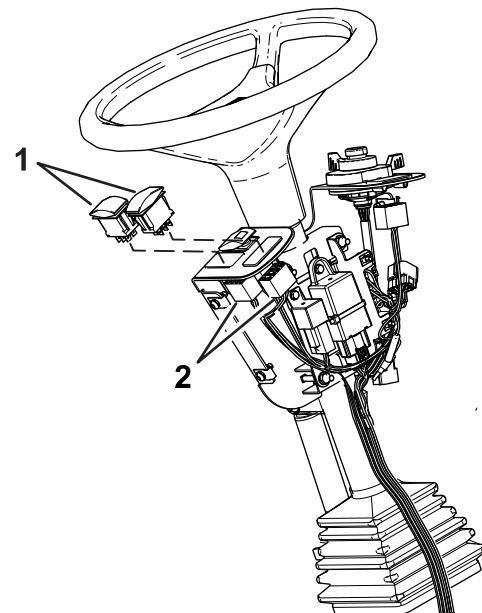


Figure 7

1. Switch
2. Connectors

8. Connect the wire harness to the 12V port (**Figure 8**).
 - Connect the blue wire to the negative (-) terminal.
 - Connect the white wire to the positive (+) terminal.
9. Connect the wire harness to the kit solenoid connectors (**Figure 8**).
10. Route the harness along the machine frame and use the magnetic clips to hold it in place (**Figure 8**).
11. Connect the wire-harness power connector to the main machine-harness cab-power connector, which is located near the right roll-bar post and adjacent to the pump pulley (**Figure 8**).
12. Connect the harness and the battery cables to the battery; refer to your machine *Operator's Manual*.

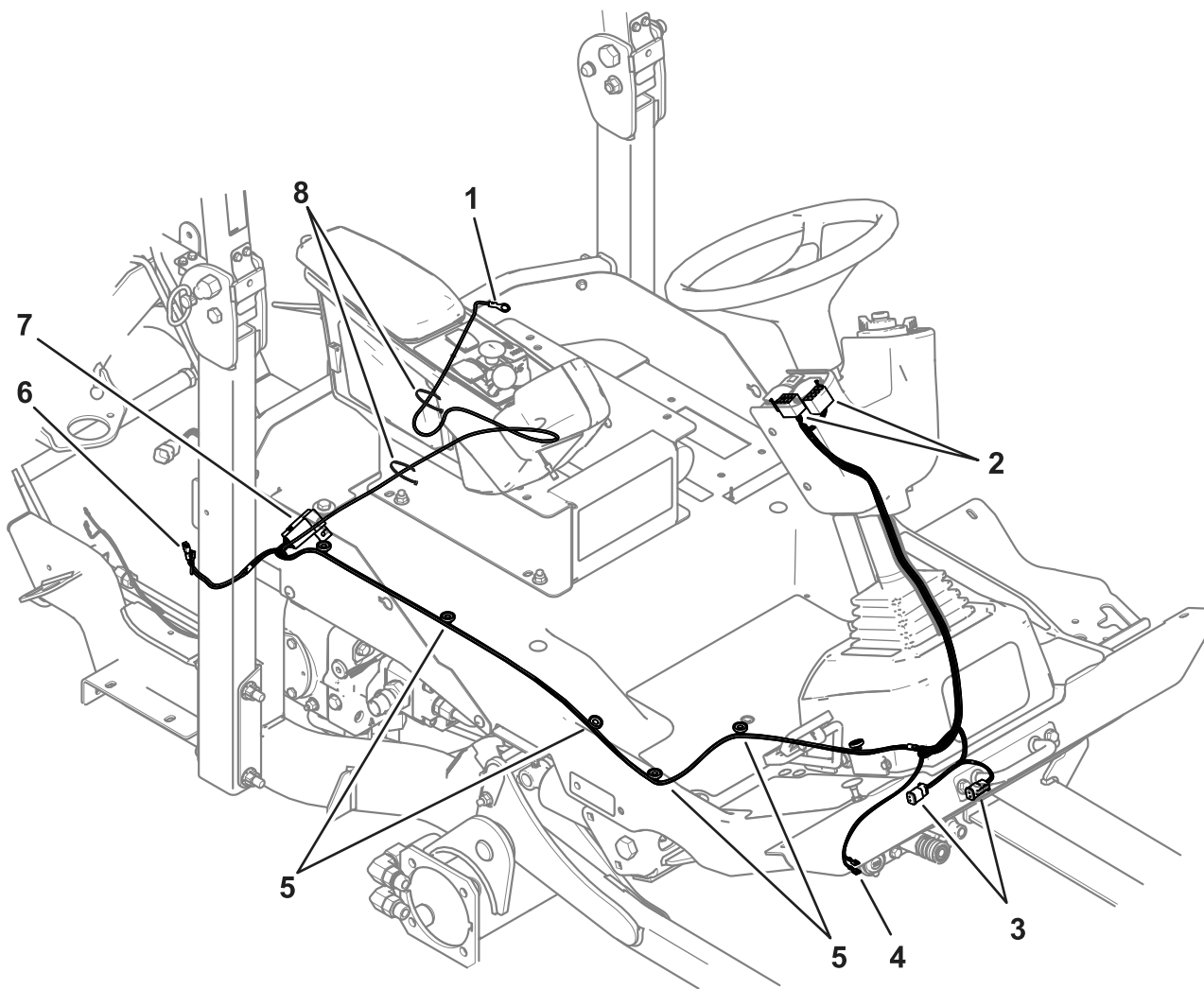


Figure 8

g309185

- | | | | |
|----------------------|------------------------|--------------------|--------------|
| 1. Battery connector | 3. Solenoid connectors | 5. Magnetic clip | 7. Fuse |
| 2. Switch connectors | 4. 12V port connectors | 6. Power connector | 8. Cable tie |

Notes:

Notes:



Count on it.