



# Z Master® 2000 Series Riding Mower

## With 48in, 52in, or 60in TURBO FORCE® Mower

Model No. 77281—Serial No. 400000000 and Up  
 Model No. 77281TA—Serial No. 400000000 and Up  
 Model No. 77283—Serial No. 400000000 and Up  
 Model No. 77285—Serial No. 400000000 and Up  
 Model No. 77288—Serial No. 400000000 and Up  
 Model No. 77291—Serial No. 400000000 and Up  
 Model No. 77291TA—Serial No. 400000000 and Up  
 Model No. 77294—Serial No. 400000000 and Up  
 Model No. 77294TA—Serial No. 400000000 and Up

### Setup Instructions

## Setup

### Loose Parts

Use the chart below to verify that all parts have been shipped.

Procedure	Description	Qty.	Use
<b>1</b>	No parts required	–	Remove the machine from the crate.
<b>2</b>	No parts required	–	Add fuel to the machine.
<b>3</b>	No parts required	–	Check the engine-oil level.
<b>4</b>	No parts required	–	Check the tire pressure.
<b>5</b>	No parts required	–	Servicing the battery.
<b>6</b>	No parts required	–	Raise the roll bar.
<b>7</b>	No parts required	–	Check the grass deflector.
<b>8</b>	No parts required	–	Remove the shipping cable ties (MyRide™ suspension system only).
<b>9</b>	No. 2 lithium or molybdenum grease (purchase separately)	1 tube	Check the machine for grease.
<b>10</b>	No parts required	–	Check the mower adjustment.
<b>11</b>	No parts required	–	Check the machine before delivery to the customer (all machines).



Procedure	Description	Qty.	Use
12	Operator's Manual	1	Deliver the machine to the customer.
	Engine owner's manual (non-Toro engines)	1	
	Operator training material	1	
	Key	2	
	Registration card	1	

**Note:** Determine the left and right sides of the machine from the normal operating position.

# 1

## Removing the Machine from the Crate

No Parts Required

### Procedure

If removing the machine from a metal crate, refer to the *Dealer/Distributor Portal* for further information.

# 2

## Adding Fuel to the Machine

No Parts Required

### Procedure

Add fuel to the machine before starting it. Refer to your *Operator's Manual* for the correct fuel and procedure.

# 3

## Checking the Engine-Oil Level

No Parts Required

### Procedure

Before you start the engine and use the machine, check the oil level in the engine crankcase; refer to Checking the Engine-Oil Level in the *Operator's Manual*.

# 4

## Checking the Tire Pressure

No Parts Required

### Procedure

Pressure: 13 psi (90 kPa)

**Note:** Check the tire pressure before starting the machine. Refer to your *Operator's Manual* for the correct tire type and procedure.

# 5

## Servicing the Battery

No Parts Required

### Procedure

**Important:** Do not run the machine with the battery disconnected; electrical damage may occur to the engine.

1. Charge the battery. Refer to the *Operator's Manual* for instructions.
2. Connect the negative battery cable.

**Note:** If the positive cable is also disconnected, connect the positive (red) cable to the positive battery terminal first, then the negative (black) cable to the negative battery terminal. Slip the insulator boot over the positive terminal.

**Note:** For MyRide machines, ensure that the ground cable does not rub against the trailing arm or lower shock mount (Figure 1).

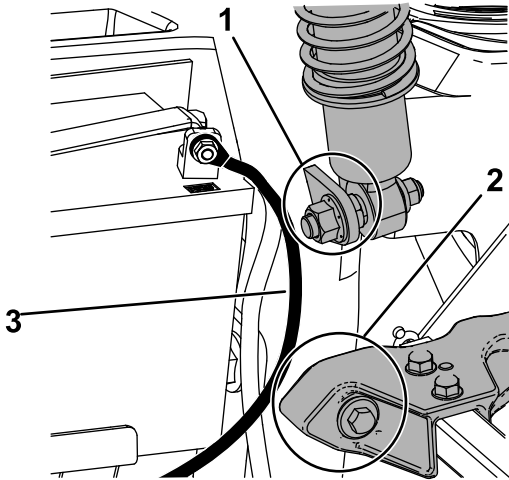


Figure 1

g236732

1. Ensure that the ground cable does not rub against the lower shock mount.
2. Ensure that the ground cable does not rub against the trailing arm.
3. Ground cable

# 6

## Raising the Roll Bar

No Parts Required

### Procedure

**Important:** Always use the seat belt with the roll bar in the raised position.

1. Remove the hairpin cotters and remove the 2 pins.
2. Raise the roll bar to the upright position.
3. Install the 2 pins, and secure them with the hairpin cotters.

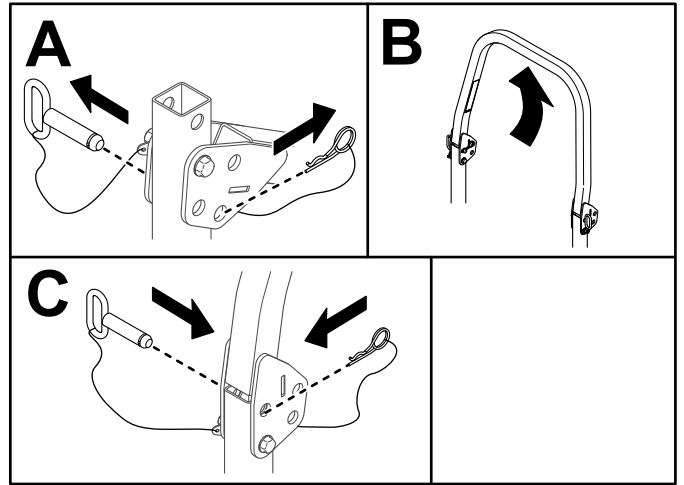
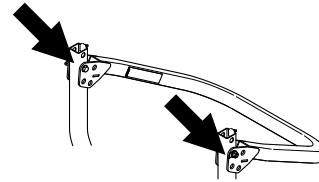


Figure 2

g399201

# 7

## Checking the Grass Deflector

No Parts Required

### Procedure

If there are plastic ties holding the grass deflector up, remove them and lower the deflector into place.

#### **⚠ WARNING**

An uncovered discharge opening could allow the machine to throw objects toward you or bystanders, resulting in serious injury or death. Also, contact with the blade could occur.

Never operate the machine without a cover plate, a mulch plate, grass deflector, or bagger installed.

1. Make sure that 1 end of the spring is installed behind the deck edge before installing the bolt as shown in [Figure 3](#).
2. Place the other end of the spring around grass deflector ([Figure 3](#)).

**Important:** The grass deflector must be free to rotate with downward tension. Lift the deflector up to the full open position and ensure that it rotates freely, without binding into the full down position.

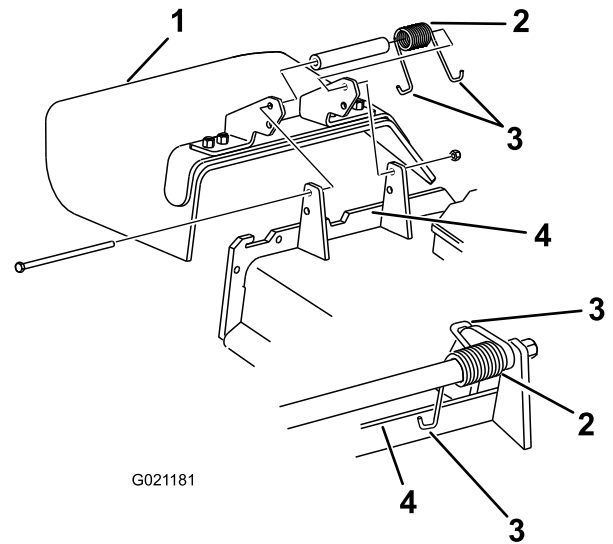


Figure 3

- |                    |                  |
|--------------------|------------------|
| 1. Grass deflector | 3. End of spring |
| 2. Spring          | 4. Deck edge     |

# 8

## Removing the Shipping Cable Ties

### MyRide™ Suspension System Only

No Parts Required

### Procedure

**Note:** This procedure is for machines with a MyRide™ suspension system only.

#### ⚠ CAUTION

The springs are compressed by the shipping cable ties. When you remove the cable ties, the seat and springs will raise up quickly by approximately 9 cm (3-1/2 inches), and could injure you.

Ensure that your hands, arms, and face are clear of the seat and springs before cutting the cable ties.

**Note:** Remove the cable ties in the area shown in [Figure 4](#) before operating the machine.

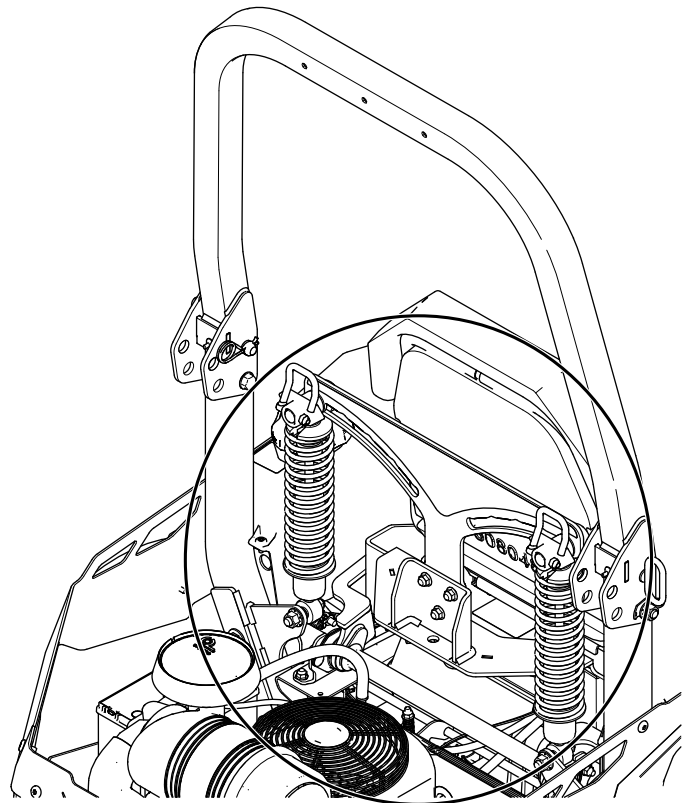


Figure 4

g412478

# 9

## Checking the Machine for Grease

Parts needed for this procedure:

1 tube	No. 2 lithium or molybdenum grease (purchase separately)
--------	--

### Procedure

Before you use the machine, check the machine for grease; refer to Lubrication in the *Operator's Manual*.

# 10

## Checking the Mower Adjustment

No Parts Required

### Procedure

Adjust the side-to-side level and the front-to-rear blade slope. Use the relevant procedures in the *Operator's Manual* to verify that the deck is level, and make any adjustments as needed.

# 11

## Checking the Machine Before Delivery to the Customer (All Machines)

No Parts Required

### Procedure

Before delivering the machine to the customer, ensure that you have performed the procedures listed in the following table and initial each when finished. Refer to the *Operator's Manual* for instructions on performing these procedures.

Initial	Check Procedure
	Check the tire pressure.
	Check the level of the mower deck.
	Check the engine-oil level.
	Check the hydraulic-fluid level.
	Check that the ROPS is secure.
	Check the adjustment of the parking brake.
	Ensure that the machine tracks correctly; refer to the <i>Operator's Manual</i> for the adjustment procedure.
	Check the safety-interlock systems and ensure that they are all functioning properly; refer to the <i>Operator's Manual</i> .
	Ensure that the PTO works.
	Check all fasteners that you installed to ensure that they are tight.

When you finish setting up the machine, sign and date in the space provided below:

Signature: \_\_\_\_\_ Date: \_\_\_\_\_

# 12

## Delivering the Machine to the Customer

### Parts needed for this procedure:

1	Operator's Manual
1	Engine owner's manual (non-Toro engines)
1	Operator training material
2	Key
1	Registration card

### Procedure

At delivery, fill in the model and serial number, complete the items listed in the following table, and initial each when finished.

Model No. \_\_\_\_\_ Serial No. \_\_\_\_\_

Dealer Initial	Customer Initial	Check Procedure
		Show the customer where the following features are located and how they function:
		• Fuel tank
		• Oil-fill cap/Oil dipstick
		• Spark plug(s)
		• Engine-oil filter
		• Engine-oil drain
		• Fuel gauge, valve, and hose
		• Air filter
		• Hydraulic filter
		• Battery
		• Ignition switch
		• Throttle lever
		• Choke (if applicable)
		• Power-takeoff switch (PTO)
		• Motion-control levers
		• Parking brake
		• Height of cut
		• Lift-assist lever (if applicable)
		• Adjustable seat
		• Hydraulic-bypass valves
		• Rollover Protection System (ROPS)

Dealer Initial	Customer Initial	Check Procedure
		Refer to the <i>Operator's Manual</i> to point out safety procedures, operation, and maintenance procedures.
		Review the warranty statement as shown in the <i>Operator's Manual</i> .
		Describe the post-sale service procedures for your store.
		Assist the customer in filling out and mailing the registration card or register online at <a href="http://www.Toro.com">www.Toro.com</a> .
		Ensure that the customer receives the <i>Operator's Manual</i> , engine owner's manual (non-Toro engines), <i>Setup Instructions</i> , and operator training material.
		Ensure that the customer knows that the <i>Parts Catalog</i> is available at <a href="http://www.Toro.com">www.Toro.com</a> .
		Assist the customer in loading the machine.

**Note:** When you, the dealer representative, have finished delivering the machine to the customer, sign and date in the space provide below and keep a copy of this page for dealer records. Also, the dealer must remind the customer to use a full-width trailer ramp to load the machine.

**Signature:** \_\_\_\_\_ **Date:** \_\_\_\_\_

**Signature:** \_\_\_\_\_ **Date:** \_\_\_\_\_