



# Relay Bracket Kit

Greensmaster® eTriFlex 3360 or 3370 Traction Unit

Model No. 147-3089

## Installation Instructions

# Installation

## Loose Parts

Use the chart below to verify that all parts have been shipped.

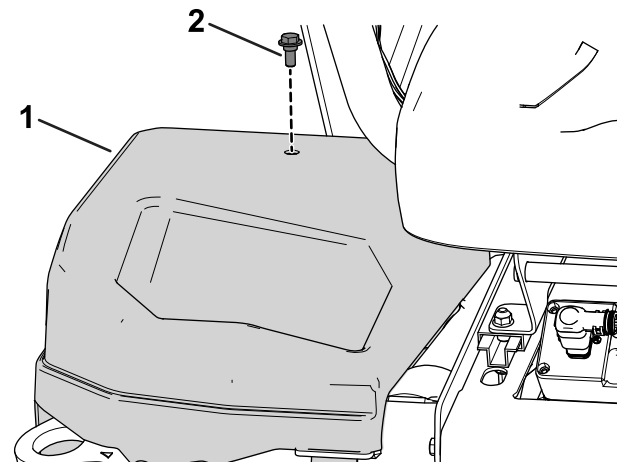
Description	Qty.	Use
No parts required	–	Prepare the machine.
No parts required	–	Remove the right side cover.
No parts required	–	Remove the relays.
Relay bracket	1	Install the relay bracket.
Bolt (1/4 x 1/2 inch)	2	
Locknut (1/4 inch)	2	
Push-in cable tie	1	Route the steering harness around the relay bracket.
No parts required	–	Complete the installation.

## Preparing the Machine

1. Park the machine on a level surface.
2. Lower the cutting units.
3. Engage the parking brake.
4. Shut off the machine and remove the key.
5. Disconnect the main-power connectors; refer to the *Operator's Manual* of the machine.

## Removing the Right Side Cover

Remove the right side cover from the machine ([Figure 1](#)).



g279712

**Figure 1**

View from the front of the machine

1. Right-side cover

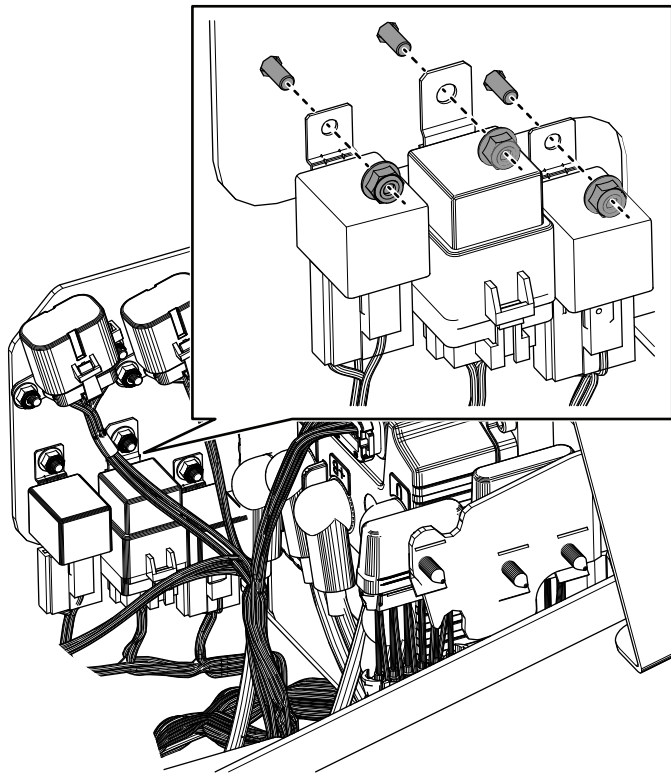
2. Bolt



## Removing the Relays

Remove the relays in [Figure 2](#) by removing the three bolts and nuts. Retain the bolts and nuts for later installation.

**Note:** Mark the relays as you remove them so they can easily be installed later.

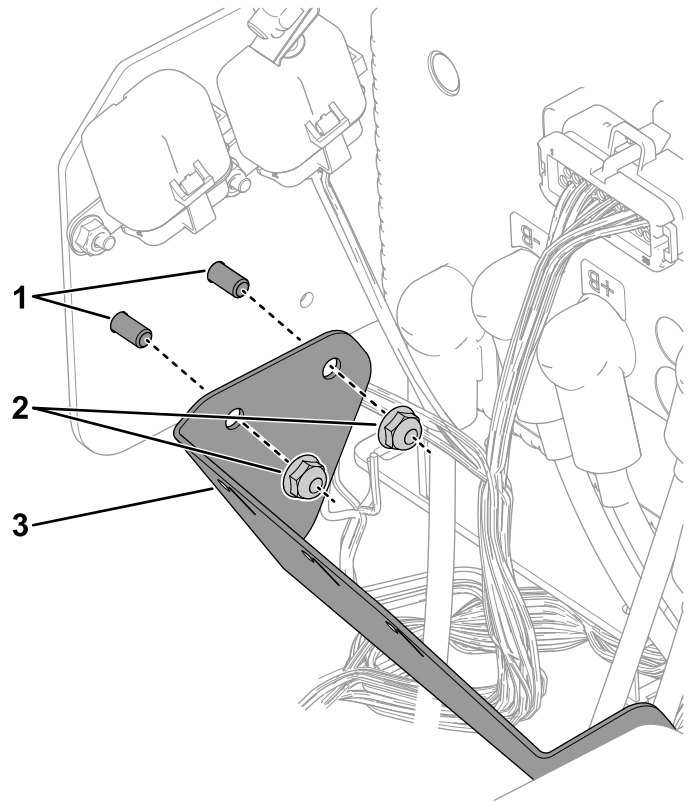


g406304

**Figure 2**  
View from the driver's position

## Installing the Relay Bracket

1. Using two bolts (1/4 x 1/2 inch) and two locknuts (1/4 inch) secure the relay bracket to the previous relay mounting holes as shown in [Figure 3](#).



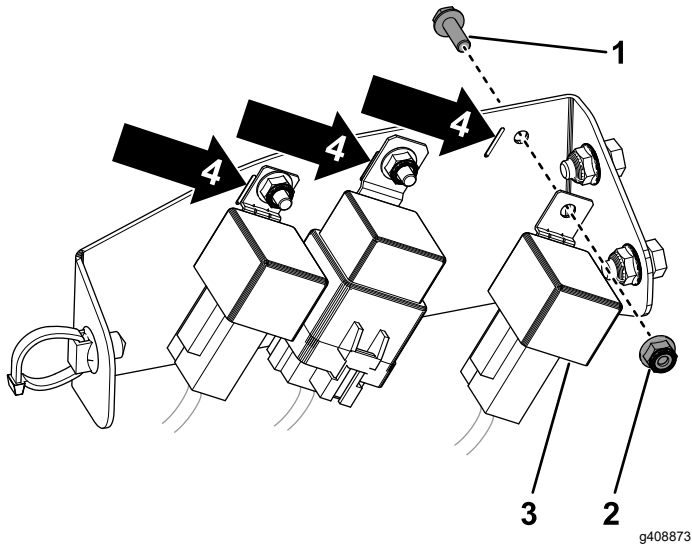
g408850

**Figure 3**

1. Bolt (1/4 x 1/2 inch)
2. Relay bracket
3. Locknut (1/4 inch)

- Install the three relays removed in [Removing the Relays \(page 2\)](#) to the relay bracket using the retained hardware ([Figure 4](#)).

**Note:** Use the slots in the relay bracket to orient the relays (4 in [Figure 4](#)).



**Figure 4**

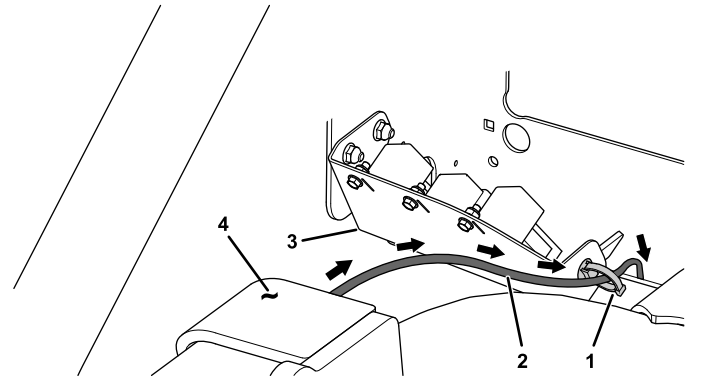
View from the rear of the machine

- |         |  |
|---------|--|
| 1. Bolt | 3. Relay                                 |
| 2. Nut  | 4. Line up the slots with the relay tabs |

## Routing the Steering Harness around the Relay Bracket

Route the harness from the steering column to the side of the relay bracket and secure it using the cable tie ([Figure 5](#)).

The steering harness must be routed around the relay bracket.



**Figure 5**

View from the front of the machine

- |                      |                    |
|----------------------|--------------------|
| 1. Push-in cable tie | 3. Relay bracket   |
| 2. Steering harness  | 4. Steering column |

## Completing the Installation

- Install the right side cover; refer to [Figure 1](#).
- Connect the main-power connectors; refer to the *Operator's Manual* of the machine.



**Count on it.**